

Exam : Cisco 642-825

**Title : ISCW - Implementing Secure
Converged Wide Area Networks**

Version : Demo

Cheat-Test, [help you pass any IT exam!](#)

1. Which two statements about common network attacks are true? (Choose two.)

- A. Access attacks can consist of password attacks, trust exploitation, port redirection, and man-in-the-middle attacks.
- B. Access attacks can consist of password attacks, ping sweeps, port scans, and man-in-the-middle attacks.
- C. Access attacks can consist of packet sniffers, ping sweeps, port scans, and man-in-the-middle attacks.
- D. Reconnaissance attacks can consist of password attacks, trust exploitation, port redirection and Internet information queries.
- E. Reconnaissance attacks can consist of packet sniffers, port scans, ping sweeps, and Internet information queries.
- F. Reconnaissance attacks can consist of ping sweeps, port scans, man-in-middle attacks and Internet information queries.

Cheat-Test.com Answer: A, E

2. Which two statements about the Cisco AutoSecure feature are true? (Choose two.)

- A. All passwords entered during the AutoSecure configuration must be a minimum of 8 characters in length.
- B. Cisco123 would be a valid password for both the enable password and the enable secret commands.
- C. The auto secure command can be used to secure the router login as well as the NTP and SSH protocols.
- D. For an interactive full session of AutoSecure, the auto secure login command should be used.
- E. If the SSH server was configured, the 1024 bit RSA keys are generated after the auto secure command is enabled.

Cheat-Test.com Answer: C, E

3. Which three statements are correct about MPLS-based VPNs? (Choose three.)

- A. Route Targets (RTs) are attributes attached to a VPNv4 BGP route to indicate its VPN membership.
- B. Scalability becomes challenging for a very large, fully meshed deployment.
- C. Authentication is done using a digital certificate or pre-shared key.
- D. A VPN client is required for client-initiated deployments.
- E. A VPN client is not required for users to interact with the network.
- F. An MPLS-based VPN is highly scalable because no site-to-site peering is required.

Cheat-Test.com Answer: A, E, F

4. Which two statements are true about broadband cable (HFC) systems? (Choose two.)

- A. Cable modems only operate at Layer 1 of the OSI model.
- B. Cable modems operate at Layers 1 and 2 of the OSI model.
- C. Cable modems operate at Layers 1, 2, and 3 of the OSI model.
- D. A function of the cable modem termination system (CMTS) is to convert the modulated signal from the cable modem into a digital signal.
- E. A function of the cable modem termination system is to convert the digital data stream from the end user host into a modulated RF signal for transmission onto the cable system.

Cheat-Test.com Answer: B, D

5. Which form of DSL technology is typically used as a replacement for T1 lines?

- A. VDSL
- B. HDSL
- C. ADSL
- D. SDSL
- E. G.SHDSL
- F. IDSL

Cheat-Test.com Answer: B

6. Refer to the exhibit. Which two statements about the AAA configuration are true? (Choose two.)

```
aaa new-model
username Bob password itsasecret
aaa authentication enable default group tacacs+ none
```

- A. A good security practice is to have the none parameter configured as the final method used to ensure that no other authentication method will be used.
- B. If a TACACS+ server is not available, then a user connecting via the console port would not be able to gain access since no other authentication method has been defined.
- C. If a TACACS+ server is not available, then the user Bob could be able to enter privileged mode as long as the proper enable password is entered.
- D. The aaa new-model command forces the router to override every other authentication method previously configured for the router lines.
- E. To increase security, group radius should be used instead of group tacacs+.
- F. Two authentication options are prescribed by the displayed aaa authentication command.

Cheat-Test.com Answer: D, F

7. Which two Network Time Protocol (NTP) statements are true? (Choose two.)

- A. A stratum 0 time server is required for NTP operation.
- B. NTP is enabled on all interfaces by default, and all interfaces receive NTP packets.
- C. NTP operates on IP networks using User Datagram Protocol (UDP) port 123.
- D. The ntp server global configuration is used to configure the NTP master clock to which other peers synchronize themselves.
- E. The show ntp status command displays detailed association information of all NTP peers.
- F. Whenever possible, configure NTP version 5 because it automatically provides authentication and encryption services.

Cheat-Test.com Answer: B, C

8. What are the two main features of Cisco IOS Firewall? (Choose two.)

- A. TACACS+
- B. AAA
- C. Cisco Secure Access Control Server
- D. Intrusion Prevention System
- E. Authentication Proxy

Cheat-Test.com Answer: D, E

9. What are three objectives that the no ip inspect command achieves? (Choose three.)

- A. removes the entire CBAC configuration
- B. removes all associated static ACLs
- C. turns off the automatic audit feature in SDM
- D. denies HTTP and Java applets to the inside interface but permits this traffic to the DMZ
- E. resets all global timeouts and thresholds to the defaults
- F. deletes all existing sessions

Cheat-Test.com Answer: A, E, F

10. Which three MPLS statements are true? (Choose three.)

- A. Cisco Express Forwarding (CEF) must be enabled as a prerequisite to running MPLS on a Cisco router.
- B. Frame-mode MPLS inserts a 32-bit label between the Layer 3 and Layer 4 headers.
- C. MPLS is designed for use with frame-based Layer 2 encapsulation protocols such as Frame Relay, but is not supported by ATM because of ATM fixed-length cells.
- D. OSPF, EIGRP, IS-IS, RIP, and BGP can be used in the control plane.
- E. The control plane is responsible for forwarding packets.
- F. The two major components of MPLS include the control plane and the data plane.

Cheat-Test.com Answer: A, D, F

11. Refer to the exhibit. On the basis of the partial configuration, which two statements are true? (Choose two.)

```
RTA# show running-config
<Output Omitted>
!
interface FastEthernet0/0
 description $FW_OUTSIDE$
 ip address 64.202.2.6 255.255.255.252
 ip access-group 101 in
 ip verify unicast reverse-path
 ip inspect SDM_LOW out
 duplex auto
 speed auto
!
interface FastEthernet0/1
 description $FW_INSIDE$
 ip address 192.168.2.10 255.255.255.0
 ip access-group 100 in
 ip inspect SDM_LOW in
 duplex auto
 speed auto
! www.Cheat-Test.com Demo
<Output Omitted>
```

- A. A CBAC inspection rule is configured on router RTA.
- B. A named ACL called SDM_LOW is configured on router RTA.
- C. A QoS policy has been applied on interfaces Serial 0/0 and FastEthernet 0/1.
- D. Interface Fa0/0 should be the inside interface and interface Fa0/1 should be the outside interface.
- E. On interface Fa0/0, the ip inspect statement should be incoming.
- F. The interface commands ip inspect SDM_LOW in allow CBAC to monitor multiple protocols.

Cheat-Test.com Answer: A, F

12. Which two statements describe the functions and operations of IDS and IPS systems? (Choose two.)

- A. A network administrator entering a wrong password would generate a true-negative alarm.
- B. A false positive alarm is generated when an IDS/IPS signature is correctly identified.
- C. An IDS is significantly more advanced over IPS because of its ability to prevent network attacks.
- D. Cisco IDS works inline and stops attacks before they enter the network.
- E. Cisco IPS taps the network traffic and responds after an attack.
- F. Profile-based intrusion detection is also known as "anomaly detection".

Cheat-Test.com Answer: B, F

13. Which IOS command would display IPS default values that may not be displayed using the show running-config command?

- A. show ip ips configuration
- B. show ip ips interface
- C. show ip ips statistics
- D. show ip ips session

Cheat-Test.com Answer: A

14. Refer to the exhibit. What statement is true about the interface S1/0 on router R1? Select the best response.

```
R1#sh mpls interfaces detail
Interface Serial1/0:
  IP tagging enabled
  TSP Tunnel tagging not enabled
  Tag Frame Relay Transport tagging not enabled
  BGP tagging not enabled
  Tagging not operational
  Fast Switching Vectors:
    IP to Tag Fast Switching Vector
    Tag Switching Turbo Vector
  MTU = 1500
```

www.Cheat-Test.com Demo

- A. Labeled packets can be sent over an interface.
- B. MPLS Layer 2 negotiations have occurred.
- C. IP label switching has been disabled on this interface.
- D. None of the MPLS protocols have been configured on the interface.

Cheat-Test.com Answer: D

15. Which two statements about packet sniffers or packet sniffing are true? (Choose two.)

- A. A packet sniffer requires the use of a network adapter card in nonpromiscuous mode to capture all network packets that are sent across a LAN.
- B. Packet sniffers can only work in a switched Ethernet environment.
- C. To reduce the risk of packet sniffing, cryptographic protocols such as Secure Shell Protocol (SSH) and Secure Sockets Layer (SSL) should be used.
- D. To reduce the risk of packet sniffing, strong authentication, such as one time passwords, should be used.
- E. To reduce the risk of packet sniffing, traffic rate limiting and RFC 2827 filtering should be used.

Cheat-Test.com Answer: C, D

16. Which two network attack statements are true? (Choose two.)

- A. Access attacks can consist of password attacks, trust exploitation, port redirection, and man-in-the-middle attacks.
- B. Access attacks can consist of UDP and TCP SYN flooding, ICMP echo-request floods, and ICMP directed broadcasts.
- C. DoS attacks can be reduced through the use of access control configuration, encryption, and RFC 2827 filtering.
- D. DoS attacks can consist of IP spoofing and DDoS attacks.
- E. IP spoofing can be reduced through the use of policy-based routing.
- F. IP spoofing exploits known vulnerabilities in authentication services, FTP services, and web services to gain entry to web accounts, confidential databases, and other sensitive information.

Cheat-Test.com Answer: A, D

17. If an edge Label Switch Router (LSR) is properly configured, which three combinations are possible? (Choose three.)

- A. A received IP packet is forwarded based on the IP destination address and the packet is sent as an IP packet.
- B. An IP destination exists in the IP forwarding table. A received labeled packet is dropped because the label is not found in the LFIB table.
- C. There is an MPLS label-switched path toward the destination. A received IP packet is dropped because the destination is not found in the IP forwarding table.
- D. A received IP packet is forwarded based on the IP destination address and the packet is sent as a labeled packet.
- E. A received labeled IP packet is forwarded based upon both the label and the IP address.
- F. A received labeled packet is forwarded based on the label. After the label is swapped, the newly labeled packet is sent.

Cheat-Test.com Answer: A, D, F

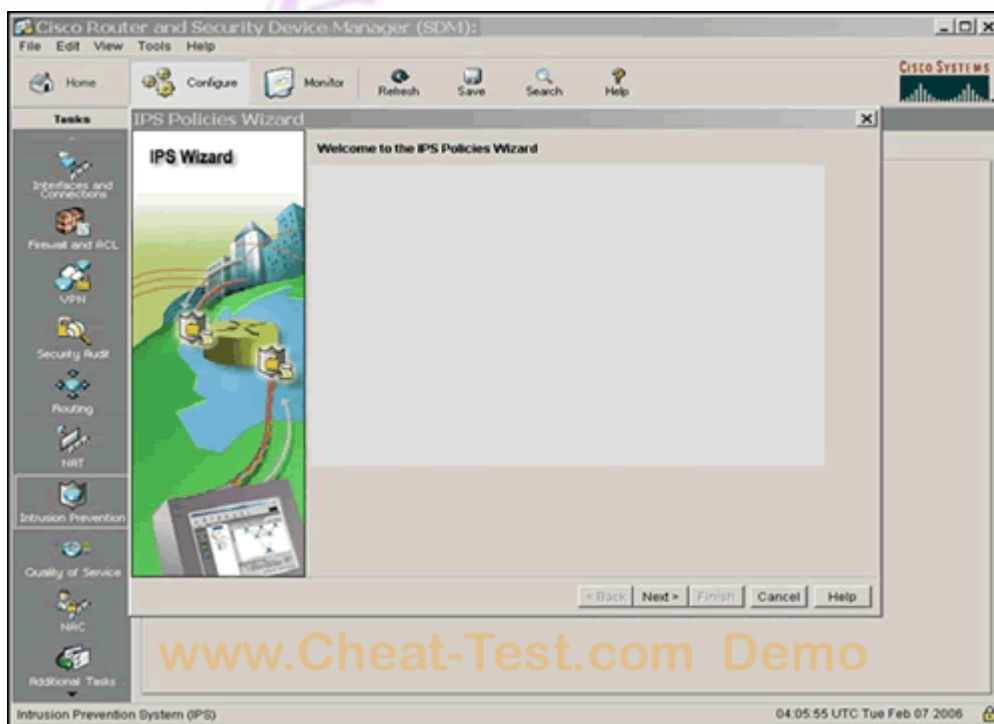
18. Which three techniques should be used to secure management protocols?

(Choose three.)

- A. Configure SNMP with only read-only community strings.
- B. Encrypt TFTP and syslog traffic in an IPSec tunnel.
- C. Implement RFC 2827 filtering at the perimeter router when allowing syslog access from devices on the outside of a firewall.
- D. Synchronize the NTP master clock with an Internet atomic clock.
- E. Use SNMP version 2.
- F. Use TFTP version 3 or above because these versions support a cryptographic authentication mechanism between peers.

Cheat-Test.com Answer: A, B, C

19. Refer to the exhibit. Which three tasks can be configured using the IPS Policies wizard via the Cisco Security Device Manager(SDM)? (Choose three.)



- A. the configuration of an IP address and the enabling of the interface
- B. the selection of the encapsulation on the WAN interfaces
- C. the selection of the interface to apply the IPS rule
- D. the selection of the traffic flow direction that should be inspected by the IPS rules
- E. the creation of the signature definition file (SDF) to be used by the router
- F. the location of the signature definition file (SDF) to be used by the router

Cheat-Test.com Answer: C, D, F

20. Which two actions will take place when One-Step Lockdown is implemented?

(Choose two.)

- A. CDP will be enabled.
- B. A banner will be set.
- C. Logging will be enabled.
- D. Security passwords will be required to be a minimum of 8 characters.
- E. Telnet settings will be disabled.

Cheat-Test.com Answer: B, C



Cheat-Test.com - The Worldwide Renowned IT Certification Material Provider!
The safer, easier way to help you pass any IT Certification exams.

We provide high quality IT Certification exams practice questions and answers (Q&A). Especially [Cisco](#), [Microsoft](#), [HP](#), [IBM](#), [Oracle](#), [CompTIA](#), [Adobe](#), [Apple](#), [Citrix](#), [EMC](#), [Lotus](#), [Nortel](#), [SUN](#) and so on.
And help you pass any IT Certification exams at the first try.

Cheat-Test product Features:

- Verified Answers Researched by Industry Experts
- Questions updated on regular basis
- Like actual certification exams our product is in multiple-choice questions (MCQs).
- Our questions and answers are backed by our GUARANTEE.

7x24 online customer service: contact@cheat-test.com

Click Here to get more Free Cheat-Test Certification exams!

<http://www.Cheat-Test.com>