

# AshSofDev Speak Users Manual

## Version 1.0.0.0

AshSofDev Speak Users Manual.....	1
Requirements .....	1
Installation.....	1
AshSofDev Speak .....	1
.Net.....	1
Speech 5.1 SDK .....	2
Using The Program .....	2
Opening The Program.....	2
The Main Window .....	2
The Speech Recognition Window .....	2
The Text To Speech (TTS) Window .....	3
Uninstalling The Program.....	4

## Requirements

- Windows 98, Windows 98 SE, Windows ME, Windows 2000, Windows XP Home, Windows XP Professional, Vista, or Windows 7
- 512 MB Ram (1 GB or more Recommended)
- 150 MB Hard Drive Space
- DotNet (Included in package)
- Speech 5.1 SDK (Included in package)

## Installation

### AshSofDev Speak

Unzip the zip file with winZip or any other unzipping utility. Navigate to where you unzipped the archive and double click on the file **AshSofDev Speak Setup.exe** then follow the prompts in the install wizzard.

### .Net

If you do not have the dotnet runtime or SDK on your computer then you will have to install it before the program will work. Navigate to where you unzipped the archive and double click on the file **dotNetFx40\_Full\_setup.exe** then follow the prompts in the install wizzard. (Internet connection required)

## Speech 5.1 SDK

If you do not have Speech 5.1 SDK on your computer then you will have to install it before the program will work. Navigate to where you unzipped the archive and double click on the file **SpeechSDK51MSM.exe** then follow the prompts in the install wizzard.

## Using The Program

### Opening The Program

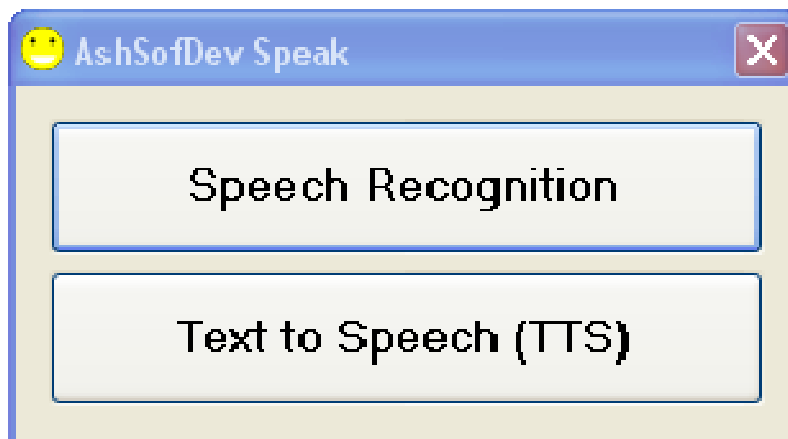
Go to start > All Programs > AshSofDev > AshSofDev Speak and click on AshSofDev Speak or doubleclick the icon on your desktop.



**Figure 1.** The Desktop Icon

### The Main Window

In the main window click on either the button that says **Speech Recognition** or the one that says **Text To Speech (TTS)** depending on whether you want to dictate or have some text read to you.



**Figure 2.** The Main Window

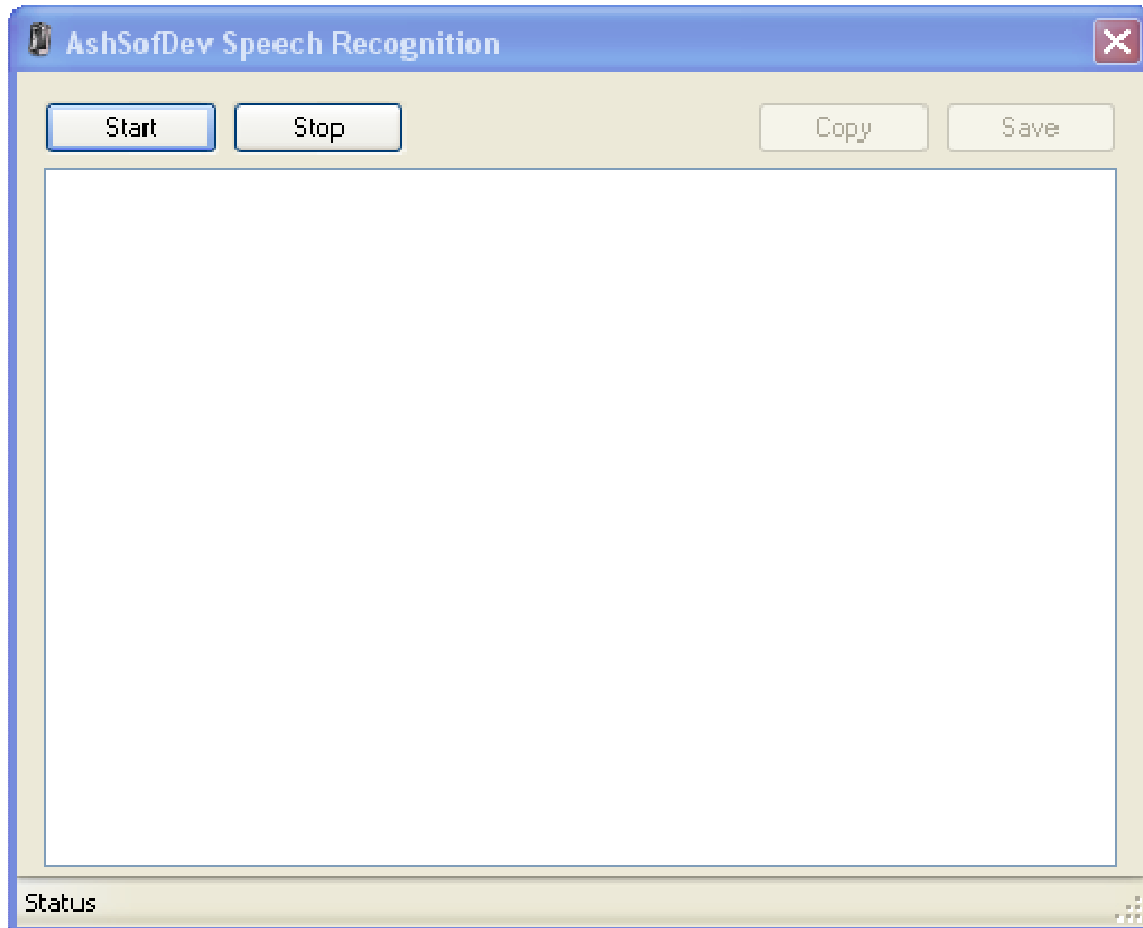
### The Speech Recognition Window

If you click on the **Speech Recognition Button** you will get the **Speech Recognition Window** (shown below).

Click on the **Start Button** to start dictation (the text in the status bar at the bottom will say "Recognition Started"). Start talking into your microphone and what you say will be

typed into the box below the buttons. It is highly recommended to train the speech recognition engine to your voice 2 or 3 times before dictating. This will increase accuracy. To do this go to Control Panel > Speech and under the speech recognition tab click 'train profile'. Then follow the wizard prompts.

When you are finished dictating click the **Stop Button** (the text in the status bar at the bottom will say "Recognition Stopped"). Now you will be able to save the text to a text file by clicking on the **Save Button** or copy the text to the clipboard by clicking on the **Copy Button**.



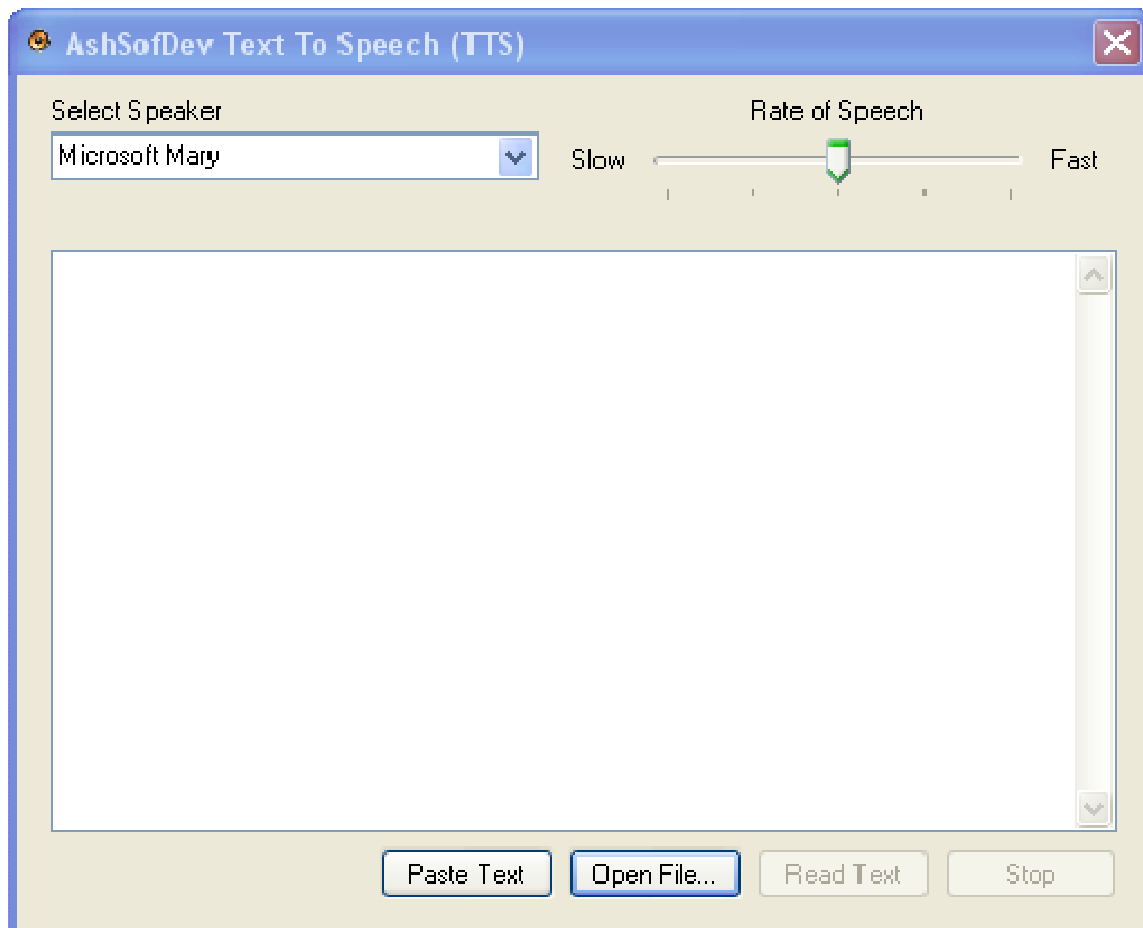
**Figure 3.** The Speech Recognition Window

### **The Text To Speech (TTS) Window**

If you click on the **Text To Speech (TTS) Button** you will get the **Text To Speech (TTS) Window** (shown below).

Here you can select one of the voices installed on your computer, change the rate of speech via the slider, type text into the box, paste text into the box with the **Paste Text Button**, or load the text box from a text file with the **Open File... Button**.

Once the box has text in it you can have it read to you with the voice you selected by clicking the **Read Text Button**. To stop the reading click the **Stop Button**.



**Figure 4.** The Text To Speech (TTS) Window

## Uninstalling The Program

I don't know why you would ever want to uninstall the program but if you do you can uninstall it from the control panel Add or Remove Programs or go to start > All Programs > AshSofDev > AshSofDev Speak and click on Uninstall AshSofDev.