



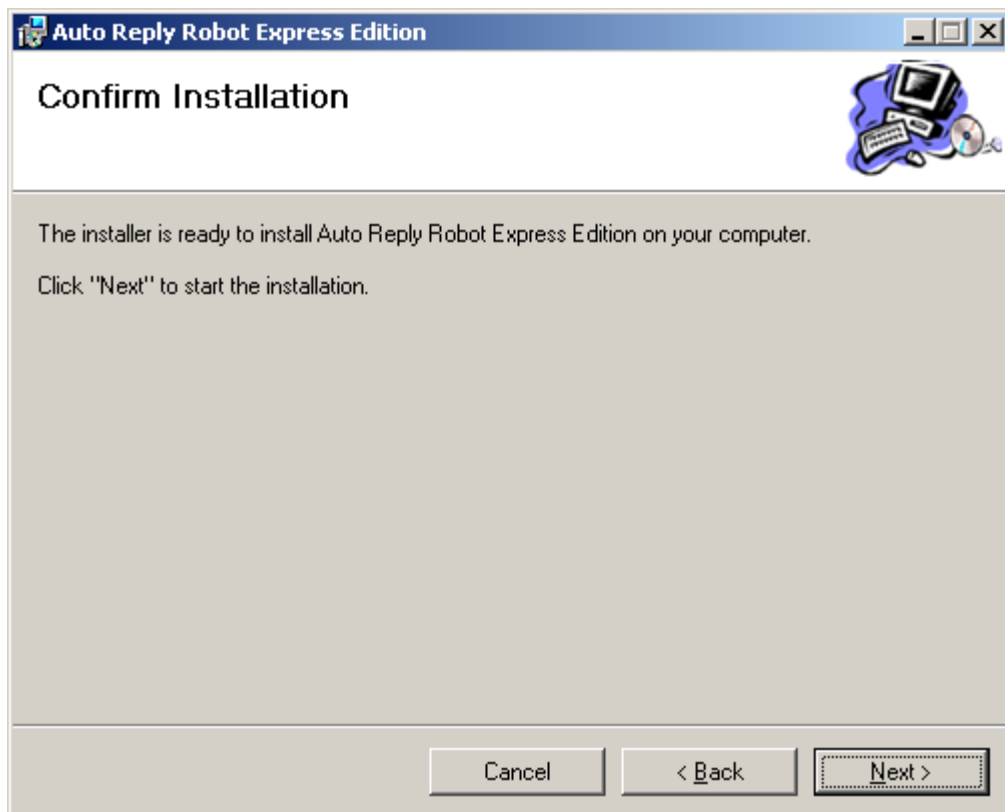
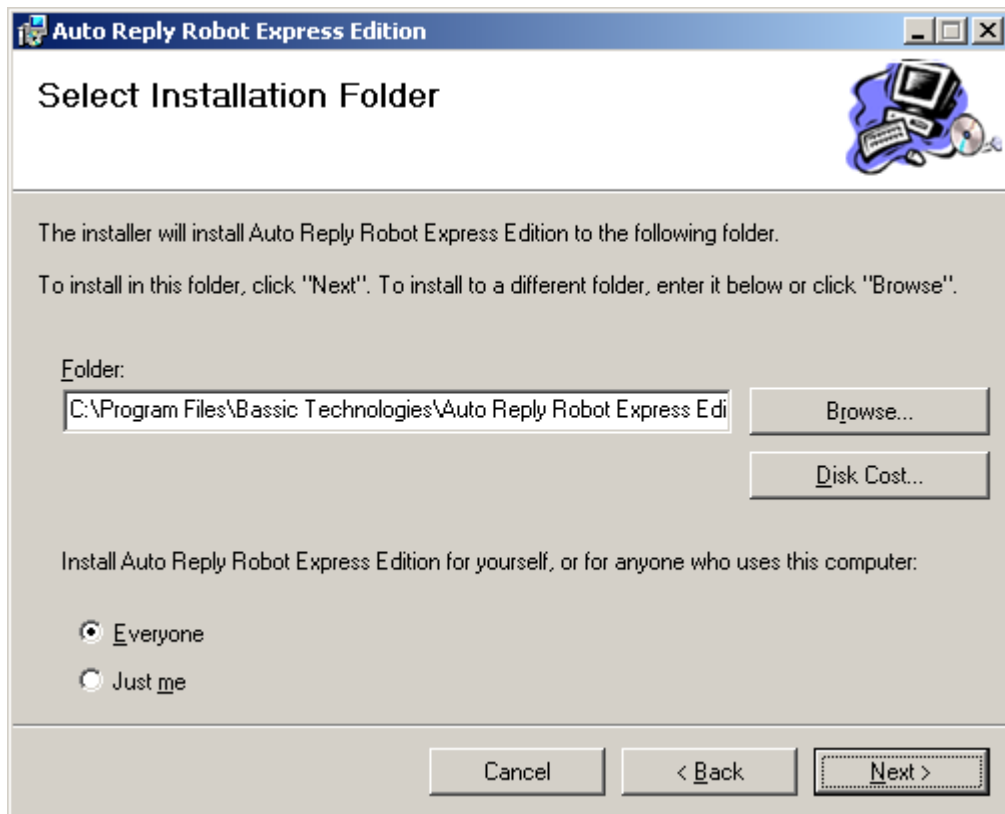
Contents

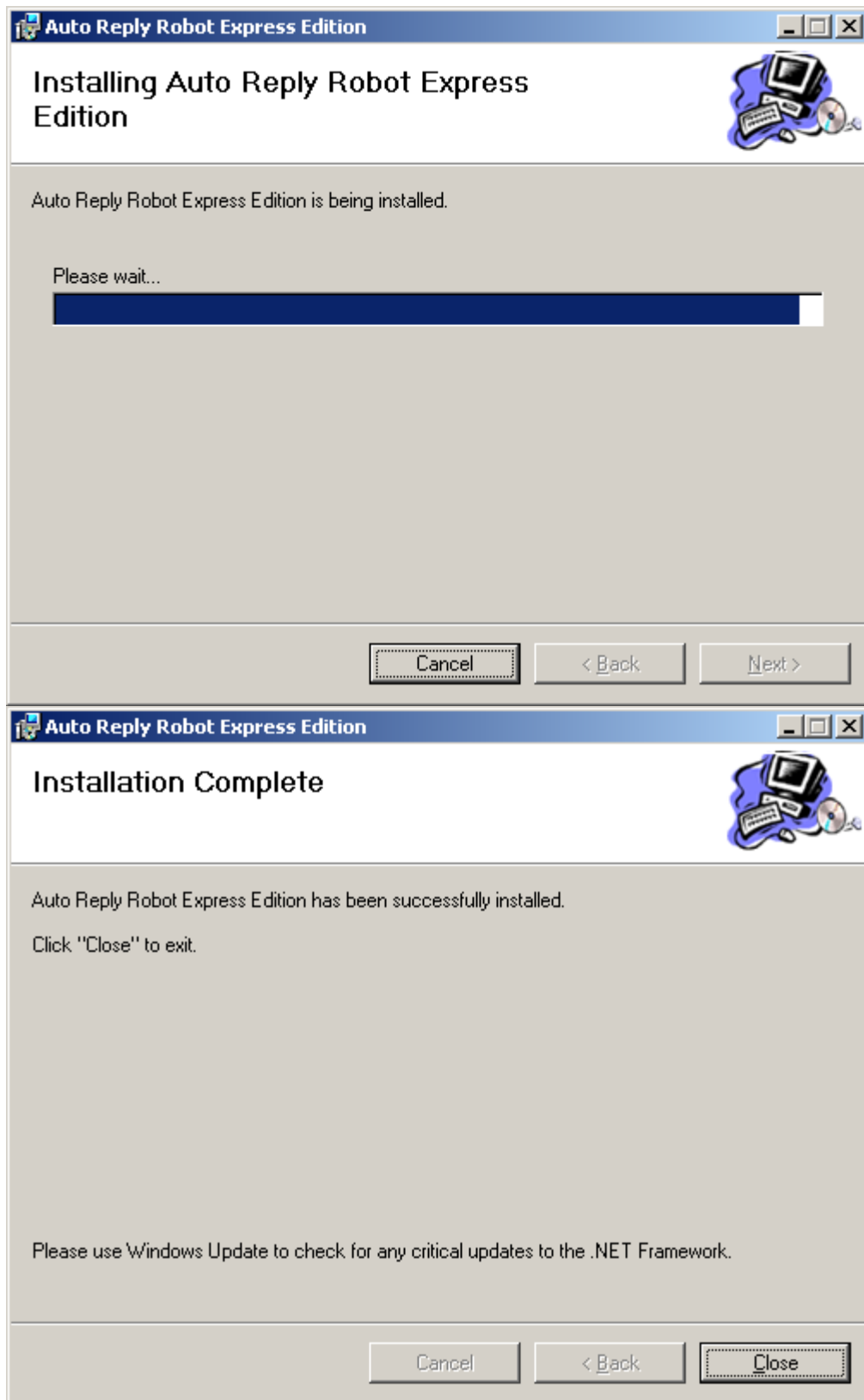
Installation.....	2
Start the setup package.....	2

Installation

Start the setup package

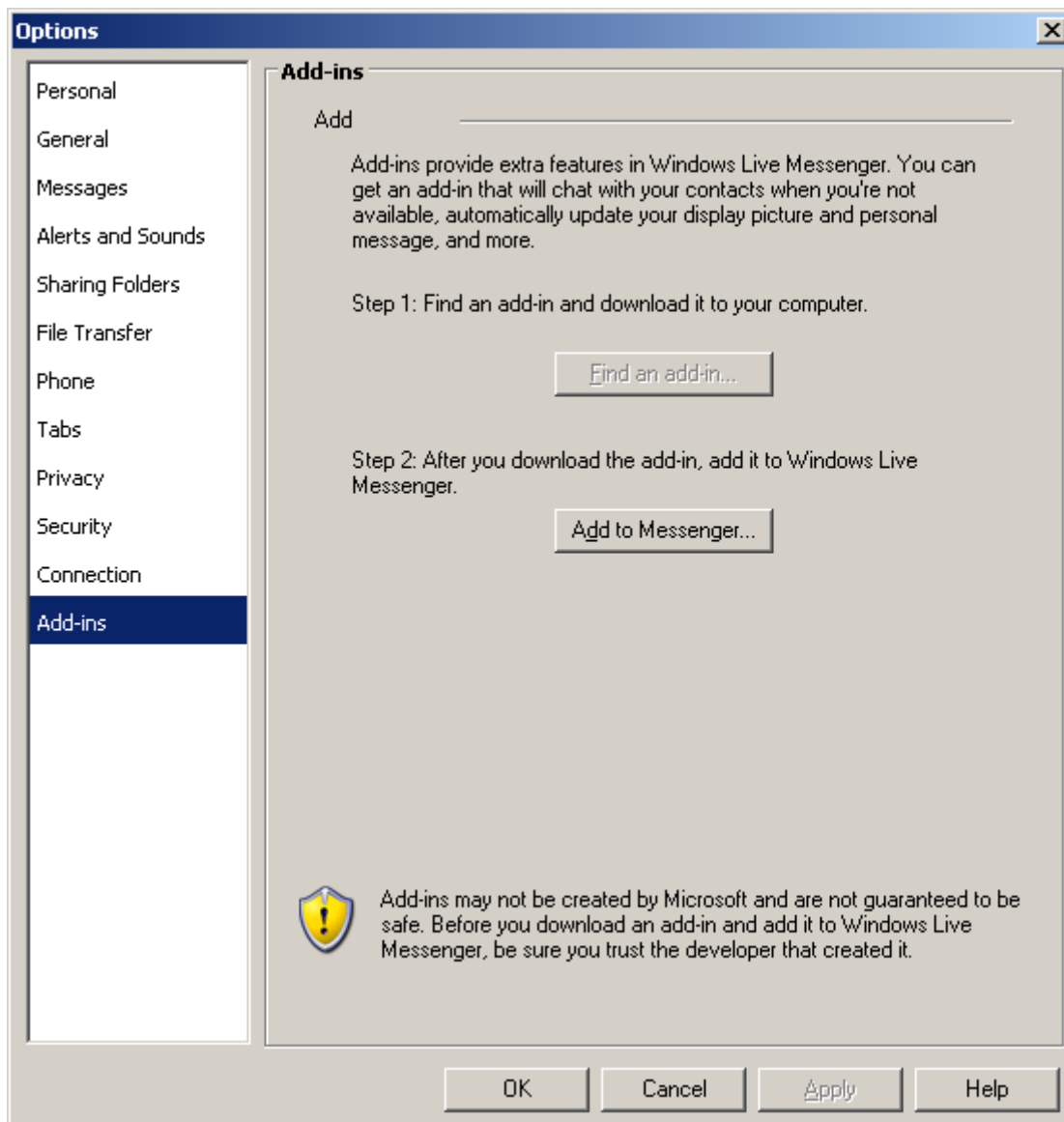






If MSN Live Messenger is running, restart it and sign-in.

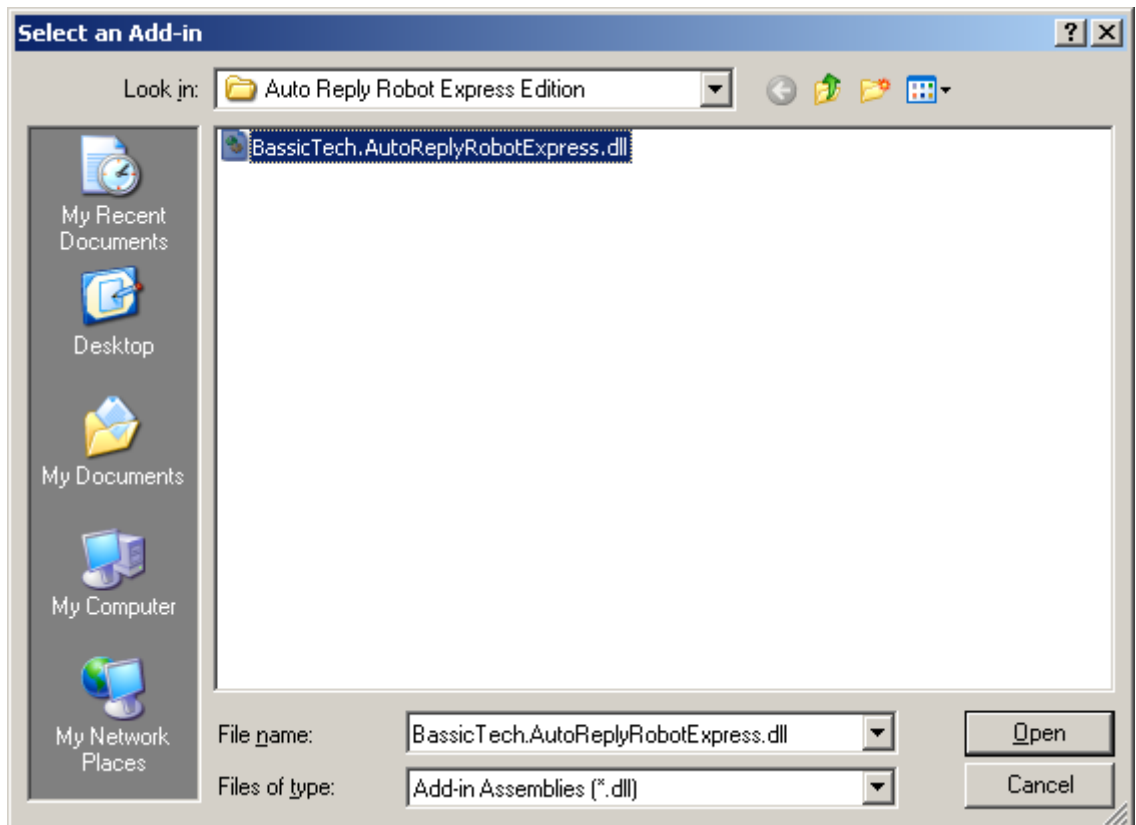
Go to Tools -> Options and select the Add-ins tab.



Click the Add to Messenger button.

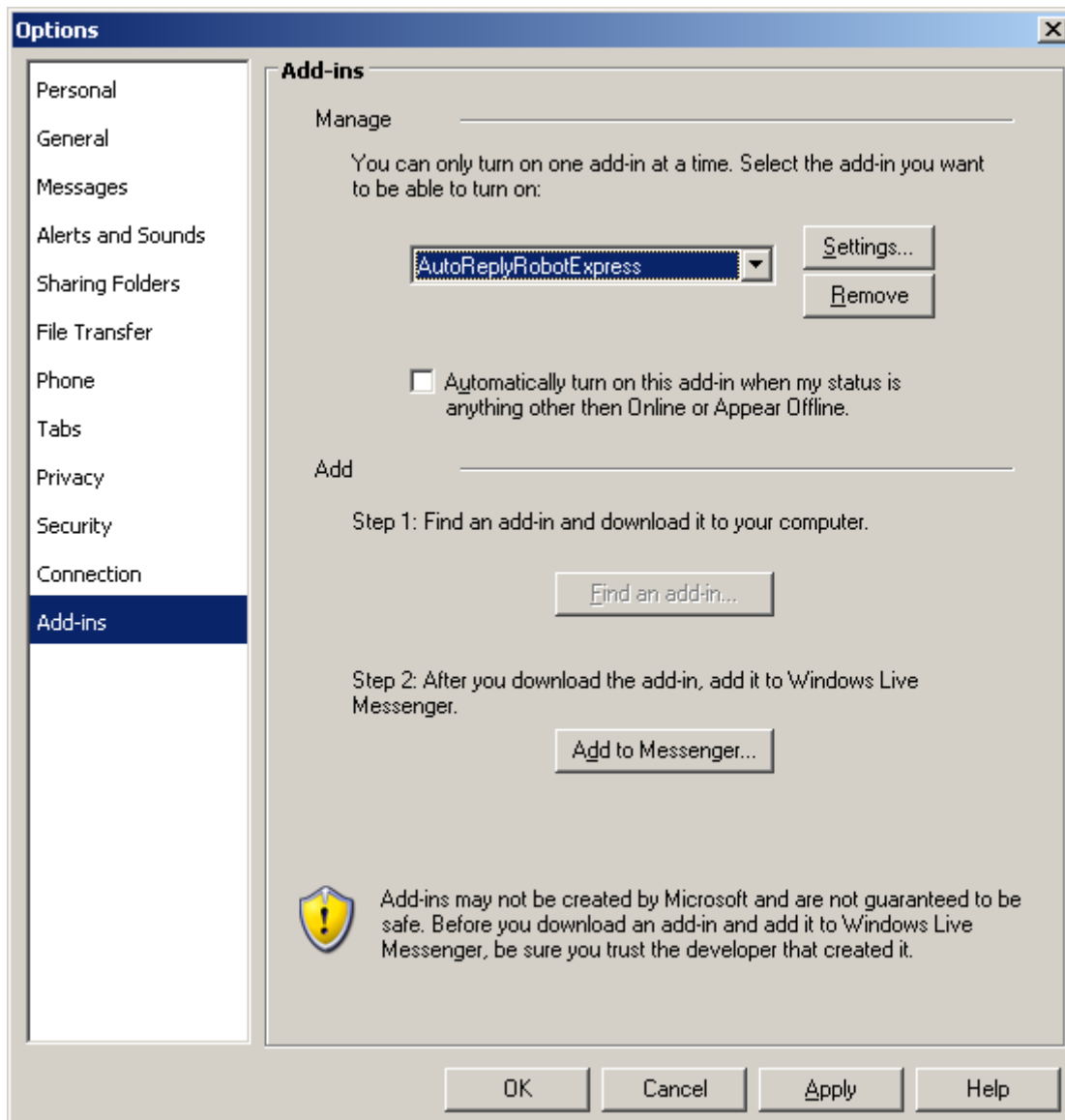
Browse to the location where you installed the Auto Reply Robot.

(Default is C:\Program Files\Bassic Technologies\Auto Reply Robot Express Edition)



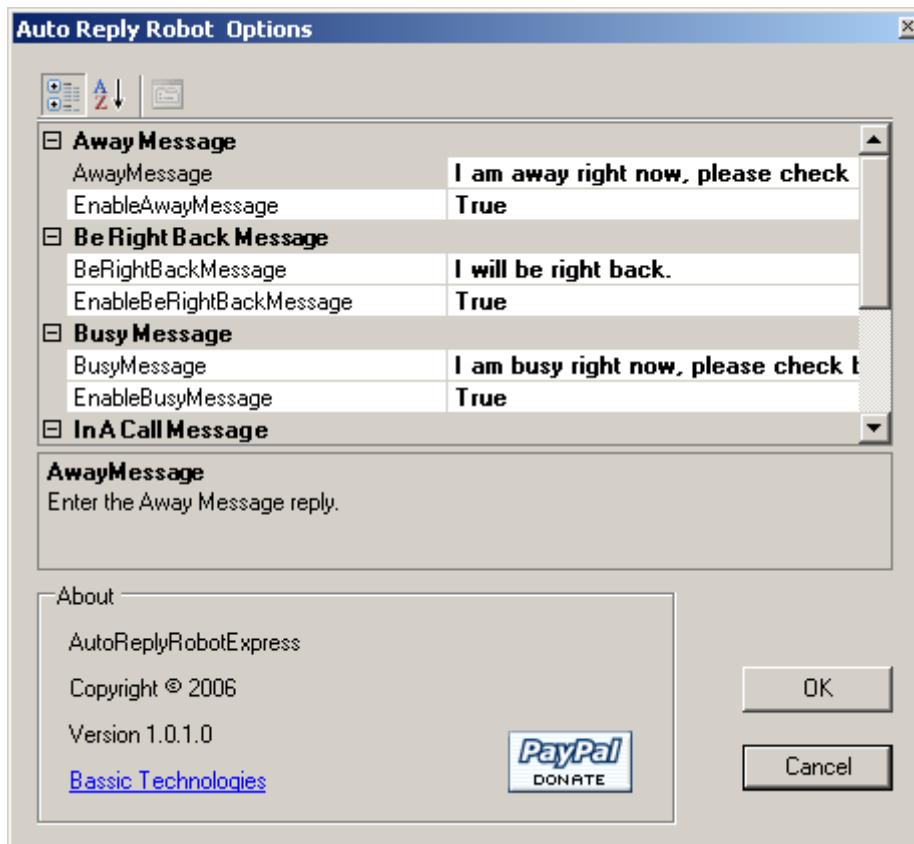
. file

Select the BasicTech.AutoReplyRobotExpress.dll and click on Open.



and

Select the AutoReplyRobotExpress item and click on Settings.



Choose the message you want to be echoed back when your status is set to busy, or any of the other statuses.

Click Ok.

Click OK to close the Options dialog.

Enable the Add-in by clicking on your name and select "Turn on "AutoReplyRobotExpress".

