

## 1. Getting Started

### 1.1 Overview

BaseballFile is a Baseball Score Management System. Keeps records for your teams and players.

#### [Box Score]

You can input the data of one game to 30 batters, 10 at bats, pitcher 6 to 15 times of extension.

The screenshot shows the 'Baseball File' application window. The left sidebar lists a file tree for the year 2008, including games on 7.10, 7.11, 7.14, 7.27, and 8.1. The main window displays the box score for the game on 2008.7.14 between the Eagles and the Fighters at N.Y. Dome. The score is Eagles 1, Fighters 4. The box score includes batting and pitching statistics for both teams.

2008. 7/ 14 Field N.Y. Dome		Event U.S. Tounament																
Comment																		
	1	2	3	4	5	6	7	8	9	R								
Eagles	0	0	0	0	0	0	0	0	1	1								
Fighters	0	4	0	0	0	0	0	0	x	4								
No.	Pos.	batter	1	2	3	4	5	6	7	8	9	AB	H	RBI	R	SB	E	
1	<6>	D.Jeter	KS		F9			G4		KS		4	0	0	0	0	0	
2	<9>	B.Abreu	G4			D8		S6		G4		4	2	0	0	0	0	
3	<5>	A.Rodriguez	KS			F8		S7			F8	4	1	0	0	0	0	
4	<10>	J.Giambi		S5		KS		F9			H2	4	2	1	1	0	0	
5	<2>	J.Posada		d4		HP		KS			S9	3	1	0	0	0	0	
6	<4>	R.Cano		BB		G3			L6		d6	3	0	0	0	0	0	
7	<8>	M.Cabrera		G5			F7		G1			3	0	0	0	0	0	
8	<3>	W.Betenit			F7		KS		G4			3	0	0	0	0	0	
9	<7>	B.Gardner			G6		KC			KS		3	0	0	0	0	0	
												31	6	1	1	0	0	
Pitcher		IP	1/3	BF	AB	NP	H	HR	SH	SF	K	BB	HP	WP	BK	RA	ER	WIN
A.Pettitte		6	-	26	26	107	8	1	0	0	6	1	0	0	0	4	4	X
D.Giese		1	-	5	5	16	1	0	0	0	0	1	0	0	0	0	0	-
D.Robertson		1	-	4	4	20	0	0	0	0	2	1	0	0	0	0	0	-

#### [Team's performance]

You can display the team result, team offences, team defences.

Team Result(Offence) 2008,1/1 - 2008,12/31										
Date	v.s. Team	Event	ABR	PA	AB	R	H	2B	3B	HF
2008. 7.10	Tigers	U.S. Championship	0.226	38	31	0	7	0	0	1
2008. 7.11	Giants	U.S. Championship	0.206	37	34	2	7	0	0	0
2008. 7.14	Fighters	U.S. Tounament	0.194	33	31	1	6	1	0	1
2008. 7.27	Tigers	U.S. Tounament	0.286	36	35	0	10	2	0	0
2008. 8. 1	Fighters	U.S. Championship	0.161	33	31	0	5	0	0	0
Total	Games:5		0.216	177	162	3	35	3	0	2

### [Batter performance]

You can display the list of the batter in ABR order.

You can set the minimum number of Plate Appearances and you can sort it in the number of the games, AB, H, R, HR, SP order and can display it.

Bat Result(ABR) minimum number of Plate Appearances = 15 2008,1/1 - 2008,12/31															
Batter	ABR	G	PA	AB	R	H	2B	3B	HR	TB	RBI	SP	K	DP	BB
B. Abreu	0.438	5	20	16	0	7	2	0	0	9	3	0.563	4	0	4
A. Rodriguez	0.263	5	20	19	0	5	1	0	0	6	1	0.316	4	0	1
D. Jeter	0.250	5	22	20	0	5	0	0	0	5	1	0.250	6	2	1
M. Cabrera	0.111	5	18	18	0	2	0	0	1	5	1	0.278	3	0	0
R. Cano	0.000	5	20	19	0	0	0	0	0	0	0	0.000	1	1	1
Above minimum number of Plate Appearances															
M. Mussina	0.500	1	2	2	0	1	0	0	0	1	0	0.500	0	0	0
J. Damon	0.364	3	13	11	0	4	0	0	0	4	0	0.364	3	0	2
J. Christian	0.333	1	4	3	1	1	0	0	0	1	0	0.333	0	0	1
J. Molina	0.286	2	7	7	0	2	0	0	0	2	0	0.286	0	0	0
J. Giambi	0.273	4	13	11	1	3	0	0	1	6	2	0.545	3	0	1
R. Sexson	0.250	1	4	4	0	1	0	0	0	1	0	0.250	2	0	0
J. Posada	0.200	3	12	10	0	2	0	0	0	2	0	0.200	3	1	1
W. Betemit	0.182	5	11	11	1	2	0	0	0	2	0	0.182	3	0	0
I. Rodriguez	0.000	1	3	3	0	0	0	0	0	0	0	0.000	1	1	0
C. Moeller	0.000	1	1	1	0	0	0	0	0	0	0	0.000	0	0	0
X. Nady	0.000	1	4	4	0	0	0	0	0	0	0	0.000	1	1	0
B. Gardner	0.000	1	3	3	0	0	0	0	0	0	0	0.000	2	0	0
D. Robertson	0.000	1	0	0	0	0	0	0	0	0	0	0.000	0	0	0
J. Veras	0.000	1	0	0	0	0	0	0	0	0	0	0.000	0	0	0
Team Total	0.216	5	177	162	3	35	3	0	2	44	8	0.272	36	6	12

### [Pitcher performance]

You can display the list of the pitcher in ERA order.

You can set the rule throw number of times and you can sort it in the number of the games, CG, W, L, HR, ER order and can display it.

Pitch Result(ERA) rule throw number of times = 5 rule throw number of times = 5 2008,1/1 - 2...															
Pitcher	ERA	G	CG	SO	NBB	W	L	SU	W%	IP	NP	AB	HA	HRA	?
C. Wang	1.227	1	0	0	0	1	0	0	1.000	7 1/3	83	28	7	0	
M. Mussina	3.000	1	0	0	0	0	0	0	0.000	6	98	26	9	0	
D. Giese	3.600	2	0	0	0	0	0	0	0.000	5	81	23	6	0	
S. Ponson	5.727	2	0	0	0	0	0	1	0.000	11	...	48	12	1	
A. Pettitte	6.000	1	0	0	0	0	1	0	0.000	6	107	26	8	1	
Above rule throw number of times															
D. Marte	0.000	1	0	0	0	0	0	0	0.000	1	15	3	0	0	
D. Robertson	0.000	2	0	0	0	0	0	0	0.000	2	36	7	0	0	
M. Rivera	9.000	2	0	0	0	0	1	1	0.000	1	39	5	3	0	
J. Veras	10.800	2	0	0	0	0	1	0	0.000	1 2/3	40	5	1	1	
Team Total	4.171	5	0	0	0	1	4	1	0.200	41	672	171	46	3	

[Personal results]

You can display the details of personal results.  
You can display the data every personal match.

D.Jeter 2008,1/1 - 2008,12/31											
Date	v.s. Team	Event	ABR	PA	AB	R	H	2B	3B	HR	TB
2008. 7.10	Tigers	U.S. Championship	0.000	5	4	0	0	0	0	0	0
2008. 7.11	Giants	U.S. Championship	0.500	5	4	0	2	0	0	0	2
2008. 7.14	Fighters	U.S. Tounament	0.000	4	4	0	0	0	0	0	0
2008. 7.27	Tigers	U.S. Tounament	0.250	4	4	0	1	0	0	0	1
2008. 8. 1	Fighters	U.S. Championship	0.500	4	4	0	2	0	0	0	2
Total	Games:5		0.250	22	20	0	5	0	0	0	5

[Export HTML]

Game Result

Eagles x Fighters Game Result

7/14/2008  
Stadium:N.Y. Dome  
Event:U.S. Tounament

	1	2	3	4	5	6	7	8	9
Eagles	0	0	0	0	0	0	0	1	1
Fighters	0	4	0	0	0	0	0	x	4

No.	Pos.	Batter	1	2	3	4	5	6	7	8	9	AB	H	RBI	R	SB	E	
1	(6)	D.Jeter		KS	F9			G4		KS		4	0	0	0	0	0	
2	(9)	B.Abreu	G4			D8	S6		G4			4	2	0	0	0	0	
3	(5)	A.Rodriguez	KS		F8		S7			F8		4	1	0	0	0	0	
4	(10)	J.Giambi		S5	KS	F9			H7			4	2	1	1	0	0	
5	(2)	J.Posada	d4		HP		KS			S9		3	1	0	0	0	0	
6	(4)	R.Cano	BB		G3			L6		d6		3	0	0	0	0	0	
7	(8)	M.Cabrera		G5		F7		G1				3	0	0	0	0	0	
8	(3)	W.Betemit			F7		KS		G4			3	0	0	0	0	0	
9	(7)	B.Gardner			G6		KC			KS		3	0	0	0	0	0	
												31	6	1	1	0	0	

Pitcher	Ining	%/3	BF	AB	NP	HA	HRA	SH	SF	SO	BB	HP	WP	BK	RA	ER	WIN
A.Pettitte	6	-	26	26	107	8	1	0	0	6	1	0	0	0	4	4	X
D.Giese	1	-	5	5	16	1	0	0	0	0	1	0	0	0	0	0	-
D.Robertson	1	-	4	4	20	0	0	0	0	2	1	0	0	0	0	0	-

## Bat Result

Bat Result(ABR) minimum number of Plate Appearances = 15  
2008,1/1 – 2008,12/31

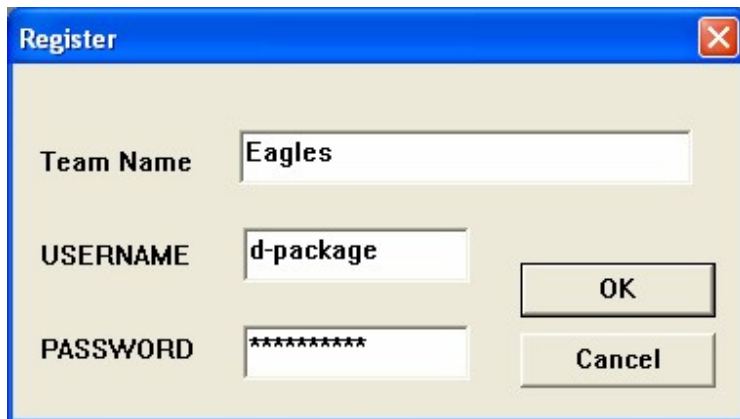
	Batter	ABR	G	PA	AB	R	H	2H	3H	HR	TB	RBI	SP	K	DP	BB	IB	HP	SH	SF	SB	E	OBP
001	B.Abreu	0.438	*5	20	16	0	*7	*2	0	0	*9	*3	0.563	4	0	*4	0	0	0	0	*2	0	0.550
002	A.Rodriguez	0.263	*5	20	19	0	5	1	0	0	6	1	0.316	4	0	1	*1	0	0	0	0	0	0.300
003	D.Jeter	0.250	*5	*22	*20	0	5	0	0	0	5	1	0.250	*6	*2	1	0	*1	0	0	1	0	0.318
004	M.Cabrera	0.111	*5	18	18	0	2	0	0	*1	5	1	0.278	3	0	0	0	0	0	0	0	0	0.111
005	R.Cano	0.000	*5	20	19	0	0	0	0	0	0	0	0.000	1	1	1	0	0	0	0	0	0	0.050
006	Above minimum number of Plate Appearances																						
007	M.Mussina	0.500	1	2	2	0	1	0	0	0	1	0	0.500	0	0	0	0	0	0	0	0	0	0.500
008	J.Damon	0.364	3	13	11	0	4	0	0	0	4	0	0.364	3	0	2	0	0	0	0	1	0	0.462
009	J.Christian	0.333	1	4	3	*1	1	0	0	0	1	0	0.333	0	0	1	0	0	0	0	1	0	0.500
010	J.Molina	0.286	2	7	7	0	2	0	0	0	2	0	0.286	0	0	0	0	0	0	0	0	*1	0.286
011	J.Giambi	0.273	4	13	11	*1	3	0	0	*1	6	2	0.545	3	0	1	0	*1	0	0	0	0	0.385
012	R.Sexson	0.250	1	4	4	0	1	0	0	0	1	0	0.250	2	0	0	0	0	0	0	0	0	0.250
013	J.Posada	0.200	3	12	10	0	2	0	0	0	2	0	0.200	3	1	1	0	*1	0	0	0	0	0.333
014	W.Betemit	0.182	*5	11	11	*1	2	0	0	0	2	0	0.182	3	0	0	0	0	0	0	0	0	0.182
015	I.Rodriguez	0.000	1	3	3	0	0	0	0	0	0	0	0.000	1	1	0	0	0	0	0	0	0	0.000
016	C.Moeller	0.000	1	1	1	0	0	0	0	0	0	0	0.000	0	0	0	0	0	0	0	0	0	0.000
017	X.Nady	0.000	1	4	4	0	0	0	0	0	0	0	0.000	1	1	0	0	0	0	0	0	0	0.000
018	B.Gardner	0.000	1	3	3	0	0	0	0	0	0	0	0.000	2	0	0	0	0	0	0	0	0	0.000
019	D.Robertson	0.000	1	0	0	0	0	0	0	0	0	0	0.000	0	0	0	0	0	0	0	0	0	0.000
020	J.Veras	0.000	1	0	0	0	0	0	0	0	0	0	0.000	0	0	0	0	0	0	0	0	0	0.000
	Team Total	0.216	5	177	162	3	35	3	0	2	44	8	0.272	36	6	12	1	3	0	0	5	1	0.282

## 1.2 Register Your Team

Select Register from Settings Menu to register your team.

Input your team name.

Input user name and password if you get the registration.



A screenshot of a 'Register' dialog box. The dialog has a blue title bar with the word 'Register' and a close button. The main area is light beige. It contains three input fields: 'Team Name' with the text 'Eagles', 'USERNAME' with the text 'd-package', and 'PASSWORD' with masked text '\*\*\*\*\*'. To the right of the input fields are two buttons: 'OK' and 'Cancel'.

Team Name	Eagles
USERNAME	d-package
PASSWORD	*****

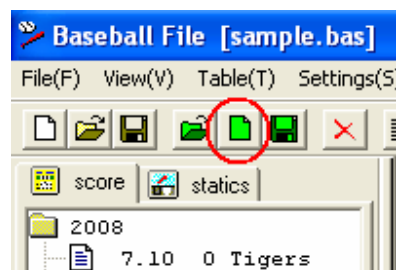
OK

Cancel

## 1.2 Add New Game

To add new game, click the "New Card" button on the toolbar.

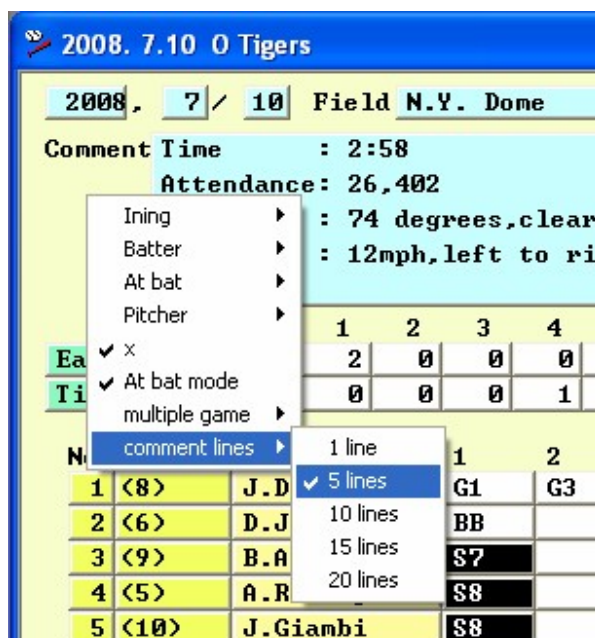
You must input date and the field name to save new game.  
Input the game information.



To change numbers of comment line, select "comment lines" from right-click menu.

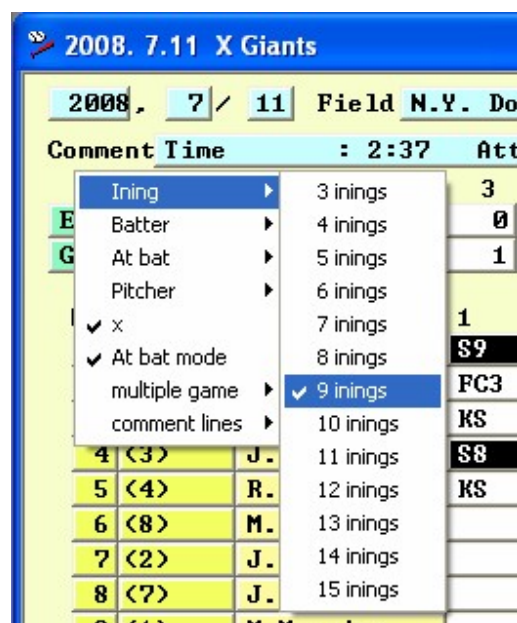
To display the right-click menu, click the right button in the background part of the scorecard.

To start new line, input ctrl + Enter key in the Comment edit-box.



To change ining of the game, select "ining" from right-click menu.

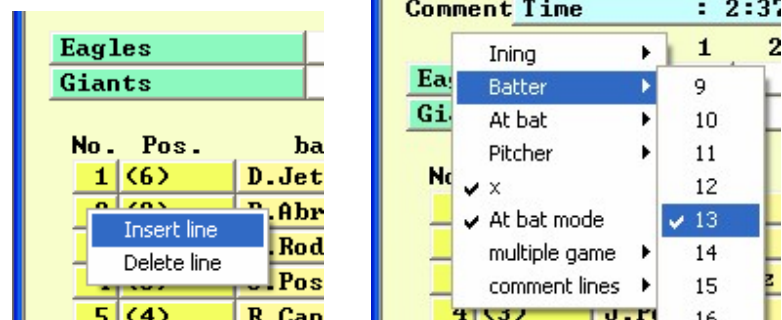
To display the right-click menu, click the right button in the background part of the scorecard.



To change the number of the batters, select "batter" from right-click menu.

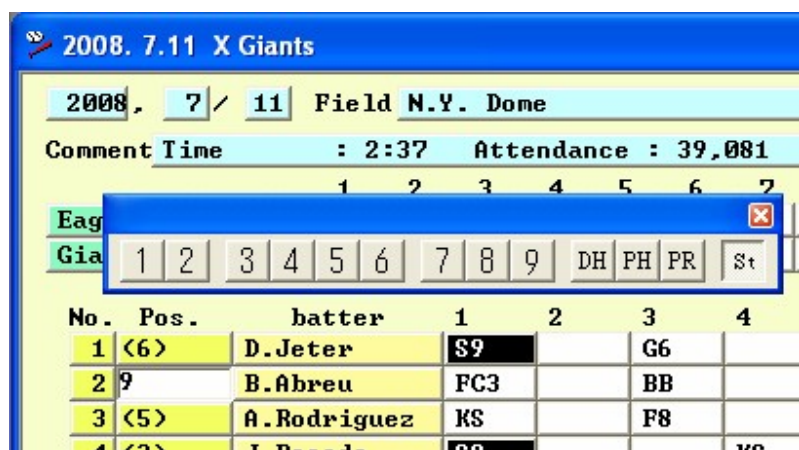
To display the right-click menu, click the right button in the background part of the scorecard.

To insert or delete line, click the right button on the batting order area.



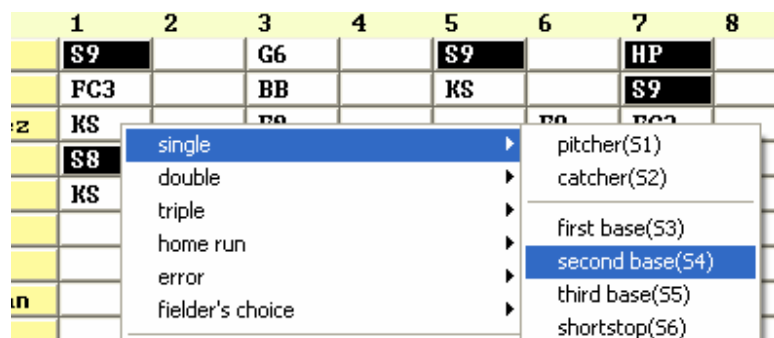
To input the position of the batters, select "position" on the toolbar.

To display the toolbar, click on the position area.



To input the batting report, select "batting result" from right-click menu.

To display the right-click menu, click the right button in the batting result area.





To change the number of the pitchers, select "pitcher" from right-click menu.

To display the right-click menu, click the right button in the background part of the scorecard.

To insert or delete line, click the right button on the pitcher name area.

Pitcher	IP	1/3	BF	AB
M. Mussina	6	-	26	26
J. Ver	1	-	5	5
D. Rob	-	-	3	3

Insert line  
Delete line

2008. 7.11 X Giants			
2008.	7 /	11	Field N.Y
Comment Time		: 2:37	
Ining	▶	1	2
Batter	▶	0	0
At bat	▶	0	0
Pitcher	▶	1	
✓ x		2	er
✓ At bat mode		✓ 3	
multiple game	▶	4	
comment lines	▶	5	guez
4 <3>	J	6	a
5 <4>	R	7	

### 1.3 Display stat.

To display the team result, click the "team result" on the toolbar.

To display the team result(offence), click the "team result(offence)" on the toolbar.

To display the team result(diffence), click the "team result(diffence)" on the toolbar.

To display the batter stat, click the "batter" on the toolbar.

To display the pitcher stat, click the "pitcher" on the toolbar.



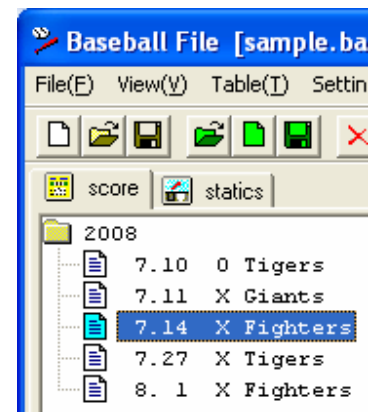


#### 1.4 Display the box score

To display the box score, double click on the game list in the left window (score).

#### 1.5 Delete the box score

To delete the box score, select the game list in the left window(score) and push the del-key .



#### 2.1 How to install

1. Unzip the contents of "BBF4101.zip" to "C:¥Program Files".
2. Create a shortcut on your desktop to "C:¥Program Files¥BaseballFile¥BaseFile.exe" and name the shortcut "BaseballFile".

#### 2.2 How to uninstall

1. Delete "C:¥Program Files¥BaseballFile".
2. Delete a shortcut to BaseballFile.the shortcut "BaseballFile".

### 3. Statistics

#### 3.1 Team Result

R	Runs scored
RA	Runs scored Allowed
H	Hit
2B	Doubles
K	Strikeouts
BB	Bases on Balls
SH	Sacrifice Hits
SF	Sacrifice Flies
E	Errors
HA	Hit Allowed
HRA	Home Runs Allowed
SO	Strike Outs by pitcher
BBA	Bases on Balls Allowed
W%	Winning percentage

#### 3.2 Team Result 2

R	Runs scored
RA	Runs scored Allowed
RBI	Runs Batted in
ABR	At Bat Rate
ERA	Earned Run Average. Earned runs, divided by innings pitched, multiplied by nine.

#### 3.3 Team Result(Offence)

ABR	At Bat Rate
PA	Plate Appearances( $AB + BB + HP + SH + SF$ )
AB	At Bat
R	Runs scored
H	Hit
2B	Doubles
3B	Triples
HR	Home Run
TB	Total Bases
RBI	Runs Batted in.
SP	Slugging Percentage
K	Strikeouts
BB	Bases on Balls
HP	Hit by Pitch
SH	Sacrifice Hits
SF	Sacrifice Flies
SB	Stolen Bases
E	Errors
OBP	On-Base Percentage. $(H + BB + HBP)$ divided by $(AB + BB + HBP + SF)$ .

### 3.4 Team Result(Diffence)

IP	Innings Pitched
NP	total Number of Pitches thrown
AB	At Bat
HA	Hit Allowed
HRA	Home Runs Allowed
SH	Sacrifice Hits
SF	Sacrifice Flies
SO	StrikeOuts by pitcher
BBA	Bases on Balls Allowed
HP	Hit by Pitch
WP	Wild Pitches
BK	BaulK
RA	Runs scored Allowed
ER	Eamed Runs
W%	Winning percentage
ERA	Earned Run Average. Earned runs, divided by innings pitched, multiplied by nine.

### 3.5 Batter

ABR	At Bat Rate
G	Games
PA	Plate Appearances( $AB + BB + HP + SH + SF$ )
AB	At Bat
R	Runs scored
H	Hit
2B	Doubles
3B	Triples
HR	Home Run
TB	Total Bases
RBI	Runs Battedin.
SP	Slugging Percentage
K	Strikeouts
DP	Double Play
BB	Bases on Balls
IB	Intentional walks.
HP	Hit by Pitch
SH	Sacrifice Hits
SF	Sacrifice Flies
SB	Stolen Bases
E	Errors
OBP	On-Base Percentage. $(H + BB + HBP)$ divided by $(AB + BB + HBP + SF)$ .

### 3.6 Pitcher

G	Games
CG	Complete Games
SO	Shut-Out
NBB	N0 bases on Balls
W	Wins
L	Loses
SV	Saves
W%	Winning percentage
IP	Innings Pitched.
NP	Total number of pitches thrown.
AB	At bat.
HA	Hit allowed.
HRA	HR allowed.
SH	Sacrifice hits.
SF	Sacrifice flies.
SO	Strike out
BB	Bases on Balls, or bases on balls allowed.
HP	Hit by pitch.
WP	Wild pitches.
BK	baulk
RA	Runs
ER	Earned Runs