



Bebopper MP3 Player

A product of BellTools.com: Simplicity Without Sacrifice

USER MANUAL

FEATURES	2
INSTALLATION and FIRST USE	3
USING BEBOPPER	4
SETTING PREFERENCES	6
MANAGING PLAYLISTS.....	8
REGISTERING BEBOPPER.....	10
APPENDIX A.....	10



BellTools.com
ATTN: Jonathan M Bell
8211 Gallaher Station Dr
Knoxville, TN 37919
E-mail: jb@belltools.com
<http://www.belltools.com/>

HotSync and Palm OS are registered trademarks of PalmSource, Inc.

Kyocera is a registered trademark of Kyocera Corporation.

INTRODUCTION

Bebopper is designed from the very beginning to make playing MP3s on the Kyocera 7135 as simple as controlling a dedicated MP3 player. In fact the standard interface isn't much different from the ones commonly found on the market today.

The basic on-screen interface is one you're sure to recognize with all the common controls easily reachable with one hand using either the physical buttons or LCD screen. We've even placed the time of day, battery level and phone signal strength where you can see it at any time – especially useful when the phone is in its cradle.

But enough about the display; you want to know what you're getting.

FEATURES

- **External volume control and track selection:** Adjust both playback volume and current track using the external volume buttons. Just a quick tap to move through tracks. Press and hold to raise or lower the volume.
- **Playback control using the headset mute/call button:** Play, pause and resume MP3 playback using the same inline button available on some headsets otherwise used to begin or end calls. (Requires compatible headset.)
- **One-handed operation:** With the flip open, access major application functions using the four standard hard keys as well as page up and page down and the OK button.
- **Shuffle control:** Honest. This is no simple “random” function that often repeats a track you just heard. Our shuffle control won't play a track again until it's finished the playlist and looped around again.
- **Playlist manager:** Reorder, delete and add tracks from any subdirectory under AUDIO. Create up to 40 playlists per expansion card. Optionally, create a playlist in M3U format on a desktop computer and import it into the handheld.
- **Automatic volume correction:** Maintains an even volume between tracks. Keeps high-volume tracks from getting too loud.
- **DynaBass:** Accentuate bass response.
- **Auto-resume:** If a phone call or HotSync® operation interrupts MP3 playback, this feature automatically restarts the track where it paused.
- **Auto-play:** Starts playback of current track when application launches.
- **Audio level bars:** Display left/right channel dBFS levels on screen.
- **Alarm Clock mode:** Schedule a daily alarm set to music.
- **Global Find support:** Search for tracks by tapping the silkscreen Find button.
- **ID3v2 support:** Tags written in the latest version of the tagging standard used when adding tracks to a playlist..

INSTALLATION and FIRST USE

The Bebopper distribution set includes three files:

- Bebopper.prc
- ReadMe.txt
- User Guide.pdf

Install the Bebopper.prc file to the Kyocera 7135 handheld. Windows users may simply double-click the .PRC file to add Bebopper to the Palm Install Tool's list of files.

Note: *Bebopper MUST be installed to the handheld, not an expansion card, in order to function properly. Installing Bebopper to a card instead of the handheld will impair functionality.*

If you have not already transferred MP3s to an expansion card, do so now. Use either the Kyocera Downloader application or copy files to the card using a compatible SD/MMC card reader. Bebopper MP3 Player is not integrated with the Downloader application and does not include a separate file transfer tool.



After completing the HotSync® operation, tap the Applications icon to enter the Launcher. Bebopper is installed into the Unfiled category. Locate the Bebopper icon and tap it.

The first time Bebopper is launched, it builds a default playlist from any files located in the AUDIO directory of the presently inserted expansion card. When the playlist build is complete, Bebopper is ready to go! Future launches of Bebopper do not force a rebuild of the playlist.

USING BEBOPPER

The on-screen layout of Bebopper closely resembles that of a standalone hardware MP3 player with minor modifications to facilitate touchscreen use.

The top portion of the screen mimics the backlit LCD common on many players. The first line features CDMA signal strength bars, an alarm indicator, current time of day and battery level.

Below that Bebopper displays the standard track details extracted from an MP3 file's ID3 tag information: track title, album title, artist name and genre. This information is accompanied by the elapsed time, track length and average bitrate. An orange progress bar provides a quick view of how far into a track the player has reached.



If the file includes JPEG cover art, that image is displayed as well. When a track is playing, the output levels from the left and right audio channels appear alongside elapsed time and genre. (The right-channel output level is omitted when listening using the internal speaker or with a monaural headset.)

Tip: Tap the time counter to toggle between elapsed time and remaining time.


Standard play controls — play/pause, previous track, next track, and stop — reside below the simulated LCD in an ellipse. The play/pause button alternates to reflect the operation performable. If a track is playing, the button displays two vertical bars. Otherwise, the button displays a right-angle play button.

Tip: You may also play or pause a track using the hardware OK button.


Other controls on the touchscreen:

- **DynaBass.** Toggle this checkbox to turn the dynamic bass feature on and off. DynaBass accentuates certain frequencies to provide a stronger bass effect on capable hardware such as stereo headphones.
- **Shuffle.** Toggle this checkbox to switch between sequential track playback and a randomized shuffle order.
- **Loop.** Toggle this checkbox to turn off the loop function that restarts playback with the first track in the playlist (or shuffle list) when the last track finishes.
- **Volume.** Adjust this slider left and right to lower and raise volume. This control is adjusted using the touchscreen or with the hardware page up and page down buttons.

Bebopper MP3 Player

- **Audio settings.** The  button acts as a popup control for basic audio settings: balance, bass and treble. Use a stylus or fingers to adjust these levels with real-time results. When finished, tap the Done button or press the OK button.

If you need to reset the levels to the center, tap Reset. This function resets all three audio settings at once.

- **Playlist.** The  button displays the Playlist Manager screen from which you can switch, rename or edit any of 40 playlists.



External Button Control

A major feature in Bebopper is the ability to control both volume and track selection using the hardware volume buttons found on the side of the Kyocera 7135. Bebopper must be the active application in order for the following features to work.

Track control. To move forward one track, simply tap and release the volume up button. Likewise to move back one track, tap and release the volume down button. If the present track's elapsed time is greater than five seconds, this function actually returns to the beginning of the track. To continue moving back, press the volume down button again.

Volume control. Press and hold either the volume up or volume down button until the audio level is adjusted to your liking.

If you've purchased a headset that includes a button used to place or receive calls, you may also use this button to pause and resume track playback.

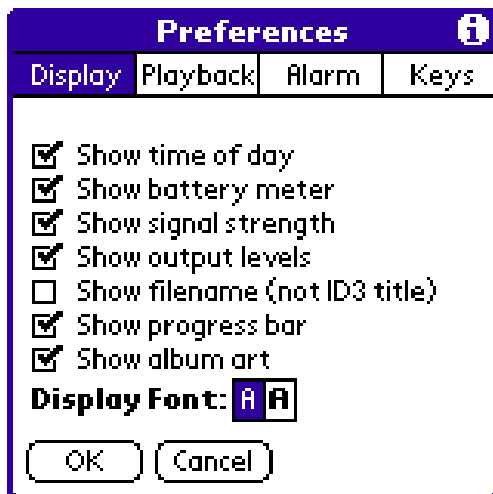
***Note:** If an incoming call arrives, pressing the headset button will answer the call. To end a call press the headset button again (or wait for the other caller to hang up). In some cases after using the phone application, especially voice dialing without actually placing a call, the headset button will not restart playback. Relaunch Bebopper to regain pause functionality. (If Bebopper is assigned to a button, press that button twice.)*

To use the headset button to place a call, press and hold the button for one second. The default voice recognizer utility (if active) will then beep and wait for voice tag input.

SETTING PREFERENCES

Bebopper permits customization of several features. Tap the Menu silkscreen button to activate the menu. Select Options, then Preferences.

From this screen you can enable or disable most features. Along the top edge of the dialog, three push buttons identify the three major preference categories: display, playback and alarm.



Display

These options relate to what features Bebopper presents on its main screen.

Show time of day displays the current time formatted according to the Formats setting in the Prefs PDA application.

Show battery meter displays the phone's battery reserve.

Show signal strength indicates CDMA signal strength. If the phone loses tower contact, the apex of the first bar turns red.

Show output levels offers the chance to show the current track's peak audio output. This feature can be toggled off to increase performance with high-bitrate tracks if necessary.

Show filename (not ID3 title) ignores embedded tag information for determining what to show for an audio track's title and instead shows its filename. Some users find this useful when ID3 tag information is less informative than the filename.

Show progress bar displays the progress within a track.

Show album art displays JPEG cover art embedded within the MP3 file by an ID3v2 tag.

Display Font allows selecting a standard font or all bold fonts on the main display.

Playback

These options relate to controlling automatic functions intended to simplify using the player.

Auto-resume on call end instructs Bebopper to resume playback when an incoming voice call or any data call ends.

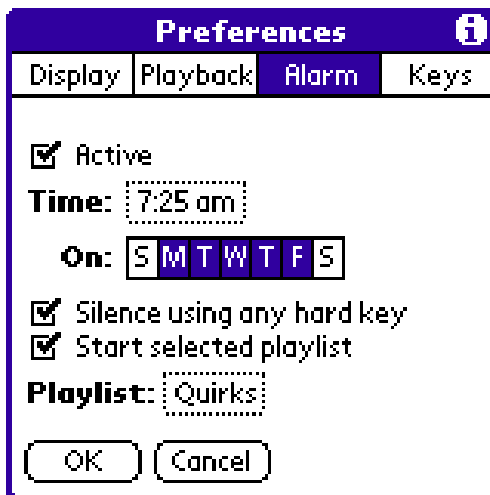
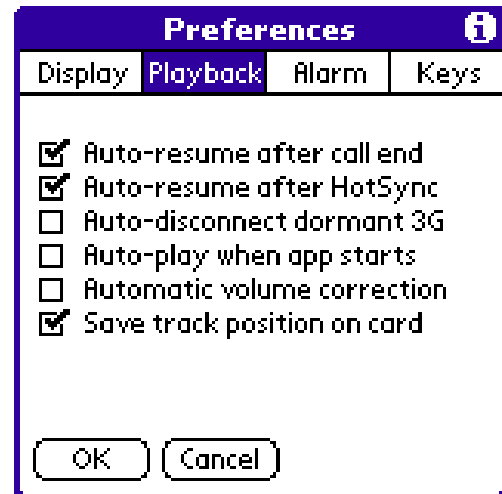
Auto-resume after HotSync restarts playback when interrupted by a HotSync® operation.

Auto-disconnect dormant 3G detects when a phone using a 3G connection ends its active session and goes into dormant phone. Bebopper can instruct the phone to completely shut down the connection immediately so that playback is not interrupted later when the dormant mode expires.

Auto-play when app starts plays the current track when Bebopper is launched without needing any user interaction.

Automatic volume correction maintains a volume level within a range that prevents some audio tracks from getting too loud and some from getting too low. This operation occurs in real time and is not intended to replace volume leveling features found in MP3 encoding software.

Save track position on card writes current track information to the expansion card between tracks. This allows Bebopper to automatically select the last track used on a particular card even after removal from the device.



Alarm

The Alarm feature settings include a selection trigger labeled with the current alarm time. Only one alarm can be set, but individual days may be selected. The main Bebopper screen includes an alarm indicator that appears when an alarm is set.

Active allows turning the alarm on or off altogether.

Silence using any hard key permits immediately shutting off alarm playback by tapping any physical key.

Start selected playlist provides a selection trigger for choosing to which playlist Bebopper should switch

when the daily alarm goes off. This selection works on a per-card basis so that the playlist can differ between expansion cards.

Tip: You can reach the alarm settings directly from the main Bebopper screen by tapping the alarm icon or time of day.

Keys

Each option here lists each standard Palm key and a dropdown list of assignable options:

- Unassigned
- Play/Pause
- Stop
- Previous Track
- Next Track
- Toggle DynaBass
- Toggle Shuffle
- Toggle Loop
- Audio Settings
- Playlist Manager
- Track Details
- Volume Up
- Volume Down



The Page Up, Page Down and OK buttons by default perform the functions of raising and lowering the playback volume, and playing/pausing a track.

Use enhanced navigation allows the page up and page down buttons to scroll line-by-line through the list of playlists on the Playlist Manager window rather than move a full page at a time. Also once the desired list is in view, pressing OK selects it.

At any other time in the Playlist Manager, the OK button plays the currently selected track.

MANAGING PLAYLISTS

Bebopper offers the ability to manipulate the playlist by reordering tracks, deleting tracks and adding new ones.

Tap the Menu silkscreen button to activate the menu. Select Playlist, then Select / Edit.

This initial editing screen displays the unshuffled playlist order with a series of editing functions along the bottom edge of the screen. Tap Done to return to the main screen.

All other buttons act upon whatever track is highlighted.







Play dismisses the Playlist Manager window and plays the currently highlighted track.

The up and down arrow buttons move a track back and forth in the playlist.

The + button displays a new dialog (see below) to permit adding new tracks, while the – button deletes a track.

Adding tracks

Press the + button. A new dialog appears listing tracks and directories in the AUDIO directory of the expansion card. Four icons represent different types of entries available.

-  Previous directory
-  Subdirectory
-  MP3 audio file
-  M3U playlist file

Selecting previous directory or subdirectory automatically refreshes the listing to show the designated directory.

Highlighting an MP3 causes Bebopper to display the track title, album title and artist name in the top portion of the dialog.



Three buttons reside along the bottom edge of the screen at this point. As with other dialogs, the Done button returns to the previous screen.

Add places the currently selected MP3 file into the playlist at whatever position was highlighted by the Playlist Manager.

If that file is an M3U playlist, however, Bebopper parses the file and adds each MP3 listed to the Playlist Manager. See Appendix A for an explanation of the format.

Add All places all files in the directory into the playlist in the order they appear in the listing.

Sort files by allows sorting the display by filename or the track number set in the files' ID3 tags.

When Bebopper has finished adding tracks, it displays an informational popup window with the number of tracks added.

Deleting tracks

Deleting tracks is even easier. On the Playlist Manager window, highlight the track you want to remove from the playlist and tap the – button.

You may delete the track from the playlist, delete the file itself, or abort the procedure.

If “Yes, with file” is selected, Bebopper will delete the file and remove all references to the track from all playlists.

REGISTERING BEBOPPER

Bebopper is distributed as trialware. It is not free software. Once installed you have 21 days in which to either pay for Bebopper or delete it from your handheld. If you decide to keep Bebopper, go to <http://www.belltools.com/> with a web browser to purchase a license. After purchase return to Bebopper and retrieve your unique Device ID.

Tap the Menu silkscreen button. Select Help, then About Bebopper. Your Device ID is displayed here. You can select and copy this number into a reply e-mail sent to you after purchase.

APPENDIX A

M3U Format

Bebopper uses a simple format to import playlists from outside the application. Many PC-based media players have used this format, known as M3U, for several years. Because of its relatively uncomplicated design, any text editor can create the file.

A sample M3U-formatted file looks like this:

```
#EXTM3U
#EXTINF:208,Celebrity - Barenaked Ladies
Barenaked Ladies/Everything to Everyone/Celebrity.mp3
#EXTINF:355,Bohemaian Rhapsody - Queen
Queen/Platinum Collection, Vol. 1-3 (1 of 3)/Bohemian Rhapsody.mp3
#EXTINF:310,Sunday (Moby Remix) - David Bowie
1f03fd04_8ccef5fd_01.mp3
#EXTINF:41,Coda - Buffy the Vampire Slayer
Buffy the Vampire Slayer Once More with Feeling/Coda.mp3
```

The first line serves as the file identifier and should appear as #EXTM3U and nothing else. After that the format calls for a list of files in the playlist. Each file is identified by a pair of lines.

The first lines provides optional reference information ignored by Bebopper but often useful for applications incapable of reading embedded ID3 tags from the actual MP3 file.

The second line is the actual filename of the desired MP3. The path given as the filename must be relative to the expansion card and directory on which it is saved. Do not give a path such as C:\My Music, which makes sense only to a PC application and includes information the handheld can't use.