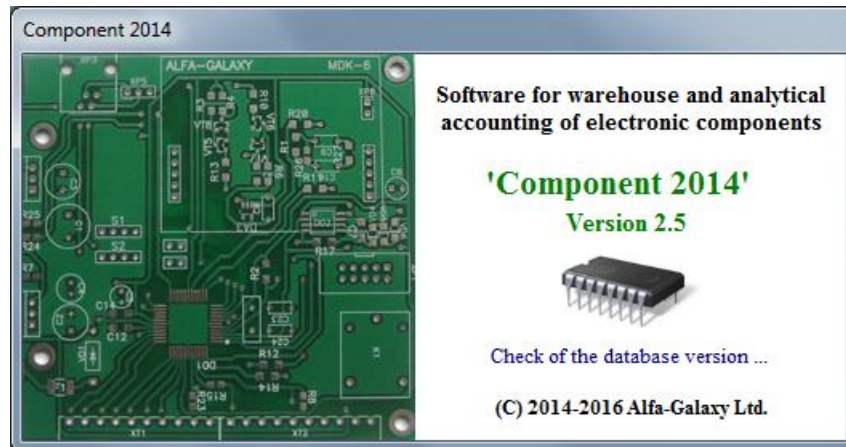


Component 2014

Software for warehouse and analytical accounting of electronic components

The best decision for developers of electronics, OEMs, repair services, electronics enthusiasts and hobbyists

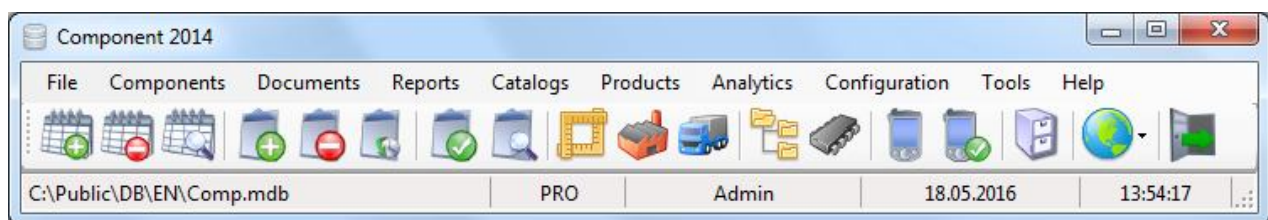


Application Features:

- Manufacturers, vendors, packages catalogs
- Warehousing management
- Locations feature
- Purchasing history
- Products list
- Categories with tree structure
- Search and sorting of components
- Kits of products
- Cost calculation
- Import & Export
- User permissions

Printing Reports & Documents:

- Incoming & Outgoing Invoices
- Bill of Materials
- Stock Sheet
- Purchasing Order
- Shopping List
- Using of Components
- Analytic Reports
- Components Catalog
- Export to MS Excel
- Kit & Product Costing
- Event Log



Database format: MS Access

Portable: application does not require installation

Compatible: Windows XP, Windows Vista, Windows 7, Windows 8, Windows 10

Software License Restrictions	FREE	PRO
Limits the number of products	5	∞
Limits the number of storages	7	∞
Limits the number of components types in a warehouse	70	∞
Limits the number of components in a warehouse	1000	∞
Export data on the availability of components in stock	-	√
License Price	\$0	\$24.99