

## CZ Popup 1.0 for Windows (Optional Add-on)

CZ Popup can be installed on those computers that:

1. Print job notification (For example: Your Print Job is Waiting at the Print Release Station. Click OK to Confirm Print, then Go to the Print Release Station to Release it. Or Click Cancel to Delete Your Print Job.);
2. Allows users to change the print job name (description) for privacy;
3. Allows users to create a user ID and (or) password that they will use to release their print jobs on the print release station.

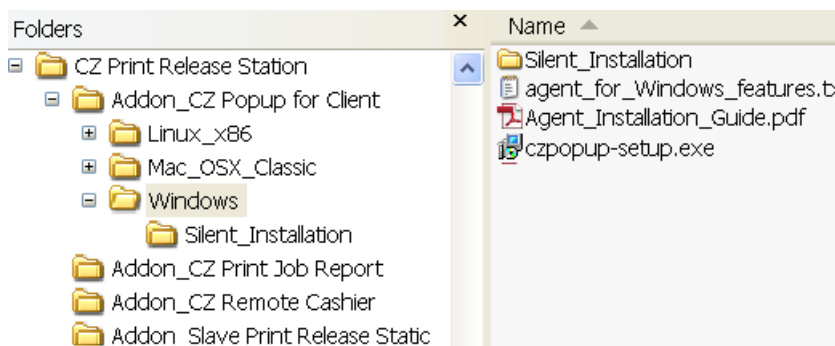
### System Requirements

Operating System	Windows 32-bit and 64-bit
CPU	300 Mh or higher
Memory	256 MB or more
Hard Disk Free Space	5 MB

**Note:** Before you run CZ Popup, please make sure Master Print Release Station is running and the option “Show popup notification when a print job is submitted” is checked in the menu item “Print Jobs → Preferences → User Mode.”

**Note:** You must have administrator rights on the workstations in order to install CZ Popup.

### Local Installation

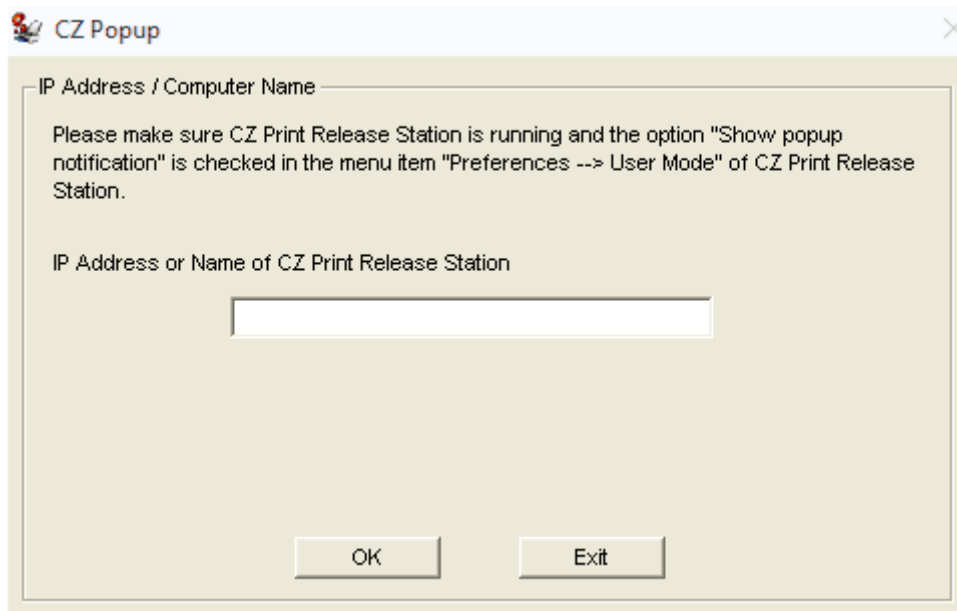


- 1, Double click czpopup-setup.exe, then follow the on-screen instructions.
2. After the installation completes, launch CZ Popup or click "Start → Programs → CZ Solution → CZ Popup" to launch.

**Note:** CZ Popup is run automatically every time when user logins. It stops running when user logouts.

**Note:** If you don't want to create shortcut in "Start → Programs", you can use Orca utility to remove the shortcut from CZ Popup.msi. See the step 1 in the following silent installation.

3. Enter the IP Address or computer name of the computer that has Master Print Release Station installed.



**Note:** This information is required when you run CZ Popup on the workstations the first time (CZ Popup.msi from <http://www.czsolution.com/popupsilentinstall.htm> can be modified to include the computer name or IP Address of your Master Print Release Station by using Orca utility, so you don't have to enter it manually when CZ Popup is started the first time. Please check the following Silent installation).

**Note:** If popup doesn't work, please see question 3 at [http://www.czsolution.com/prs\\_faq.htm](http://www.czsolution.com/prs_faq.htm)

### **Silent Installation**

<http://www.czsolution.com/popupsilentinstall.htm>

### **Uninstall CZ Popup 1.0**

Open Add/Remove Programs, select CZ Popup 1.0, then click on the Remove button.

You can also use Windows group policy or third party installation software to remotely uninstall CZ Popup from all workstations at one time.