

DB Palette

Plug-in for Adobe Illustrator

User Manual

System Requirements:

- Adobe Illustrator 8.0 / 9.0 / 10.0 / CS / CS2
- Macintosh OS 9.1 / OS X 10.1~
- Windows OS 98 / Me / 2000 / XP

In some cases there may be a malfunctioning of BPT-Pro2 when used in conjunction with, or at the same time as other companies Adobe Illustrator Plug-ins, and as such the program may not work properly. Please bear with us.

▶ <http://www.baby-universe.co.jp/plug-in/eng>

Terms and conditions

Before using DB Palette, please read through the each terms and conditions written below. By using the DB Palette Package we judge that you have read and understood the following information.

1. License

Basically one license for DB Palette qualifies you to use one application, which means that one license allows you to install the software on one machine. If you want to use the software license for other purposes, it is illegal and you could be asked for compensation.

2. Warranty of use

It is not possible for us to insure against any accidents that could happen when users use BPT-Pro2, and as such, we regard your use of the software as agreement that there have been no problems, unless you stop using the software while still using the demonstration version.

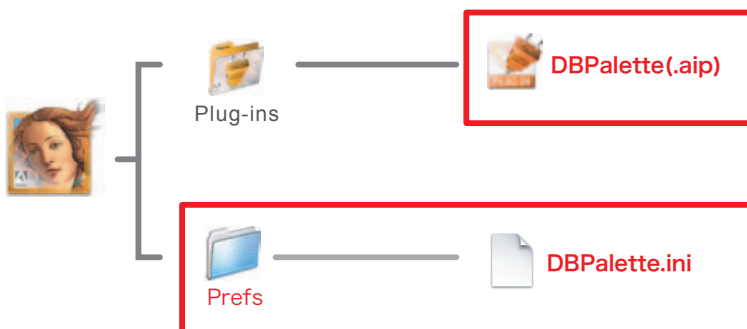
Installation

■ Close Adobe Illustrator before you start installation

When opening DB Palette, you see a dialog box appear as shown. You will find 5 versions of the DB Palette folders.

DB Palette AI08, DB Palette AI09, DB Palette AI10, DB Palette AICS and DB Palette AICS2 are shown in the dialog box. The numbers written at the end of DB Palette indicate different versions of Adobe Illustrator in such that AI08 means Adobe Illustrator version 8.0. First of all, choose the folder that corresponds with the Adobe Illustrator you are using on your OS.

Start the Setup.exe ("Setup.exe for Windows OS, "Installer for Mac OS) by double clicking the icon, and choosing the OK button to complete installation. The installer automatically searches for the compatible version of Adobe Illustrator in your system. Where it is not found, and different or several versions of Adobe Illustrator are in your system, please use the disk change button or install directory to search for the compatible version. If the compatible version of Adobe Illustrator is still not found, press and drag the DB Palette Plug-in file, and drop it directly in the first level of Adobe Illustrator plug-in folder in your system, and also drag the "Prefs" folder, and drop in the first class of the Adobe Illustrator folder. The installation may take time depending on the environment of your computer.



The data selected by a are to be installed.

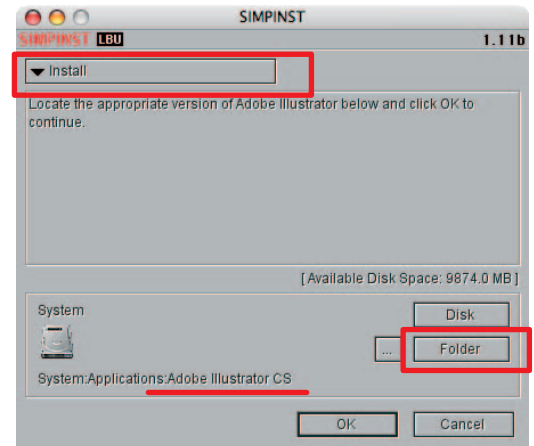
? For Macintosh User

The Plug-in file, EXDXF-Pro(.aip), can be found in the folder for each version of illustrator.

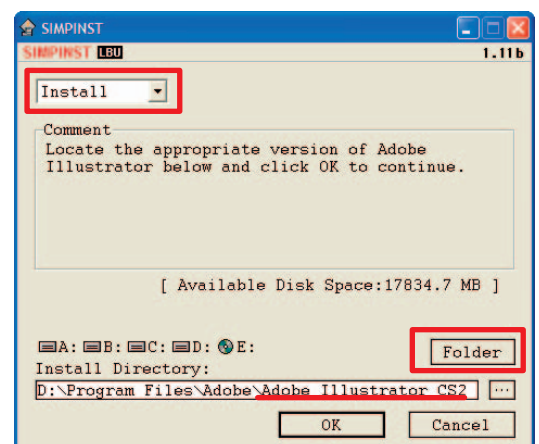
Macintosh



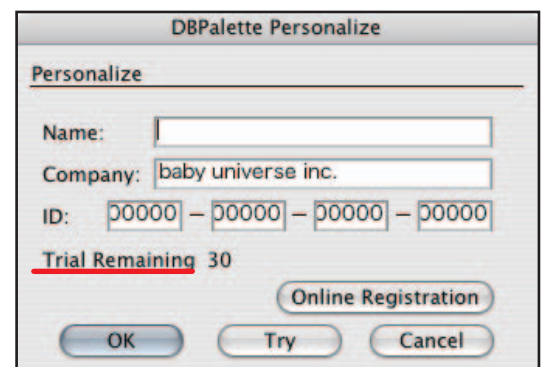
Windows



Macintosh OS installer dialog box



Windows OS installer dialog box



Personalize dialog box

How to personalize

When you start DB Palette a dialog box, as shown on the left, appears. Please enter your name, organization, such as company or school name and ID (activation code) to complete the personalization.

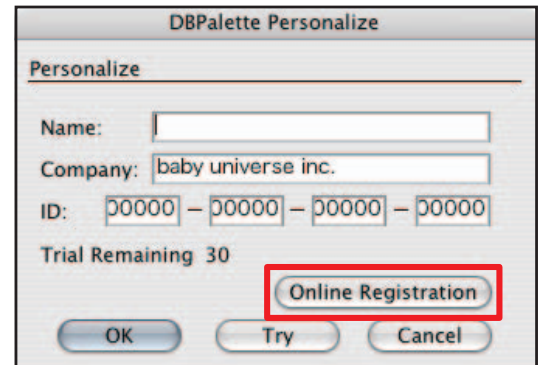
■ About demonstration version

If you want to use the software as a demonstration version, please press the "Trial button" to start the demonstration version of the software. The trial can be used a maximum of 30 times.

If you want to purchase the software as a regular version, please visit Baby Universe shopping page to buy online. Please follow the procedure in the shopping site. After we verify your purchase for the product with a credit card certified system, we will send an email with the subject "Confirmation of order" which will include your "ID (activation code) and Serial number".

■ Shareware version

If you purchased shareware version of our products, you do not need to do "Online Registration". When we send you ID and activation key, your registration is finished automatically.

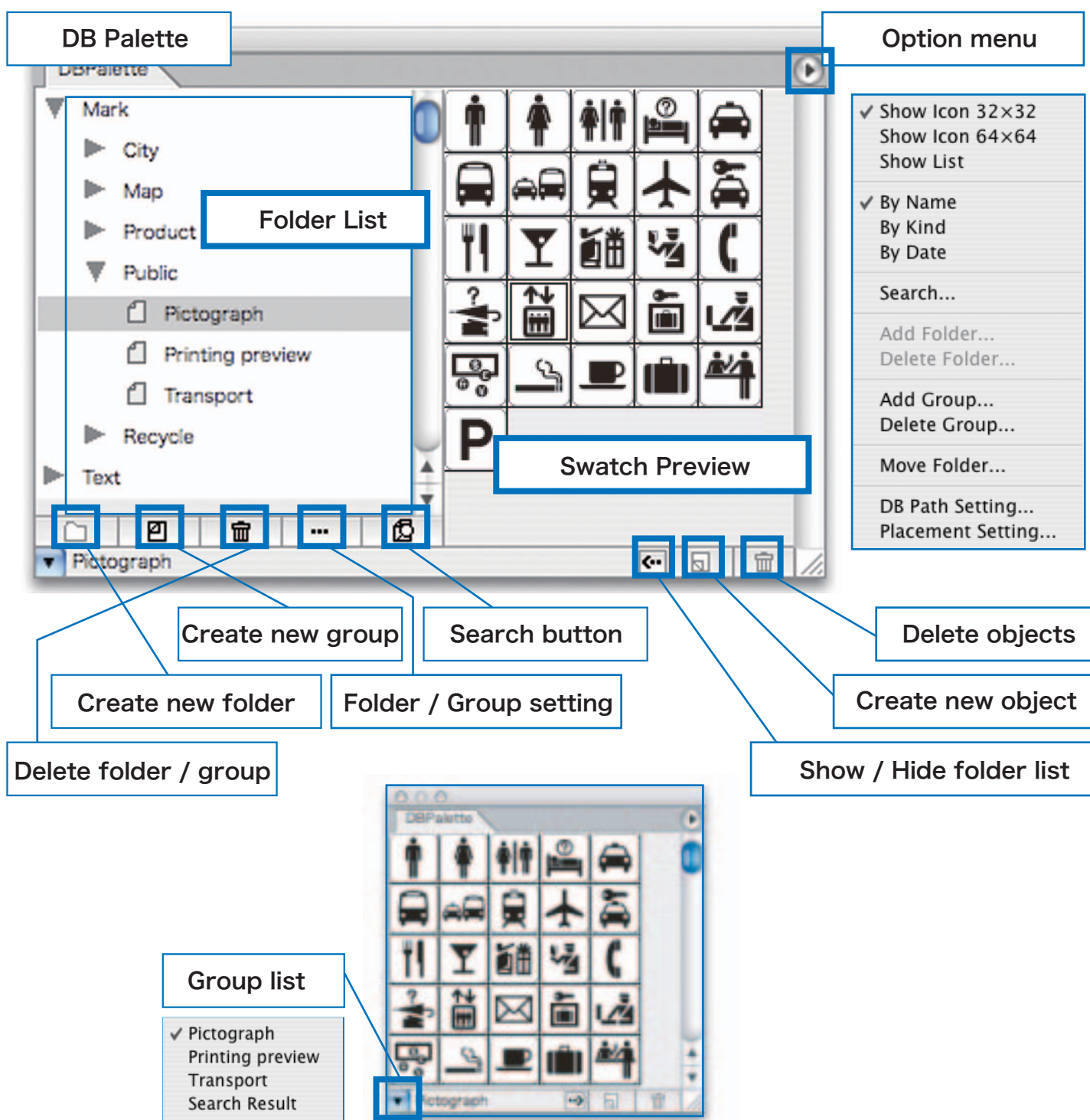


Personalization dialog box appears when Adobe Illustrator is launched (package version)

How to use DB Palette

1: Name of the parts in DB Palette

To show the DB Palette, select "show DB Palette" from Window of the Adobe Illustrator menu, Window > Show DB Palette. DB Palette can be used in the same way as other palettes in Adobe Illustrator.



2: Folder / Group / Object

Try to organize objects by utilizing folders and groups



Create new folder

Folders can be created for up to 2 classes. “▶” mark represents a folder created in DB Palette. It is possible to change the name of a folder and transfer a folder by clicking on the “Folder List” or “Folder / Group Setting”.



Create new group

A group is created with a set of gathered objects. The name of the file is “?.aid”. It can be created anywhere on the “Folder List”. It is possible to change the name of a group and transfer a group by clicking on the “Folder List” or “Folder / Group Setting”.



Register objects

Register Objects

1. Choose the group in which you want to register objects.
2. Click the “New Object” button with selecting objects.
3. Enter Name, kind and comments, then click “Register”
(by doing this, it can be searched for and found easily later on.)

DBPalette Entry

Name:

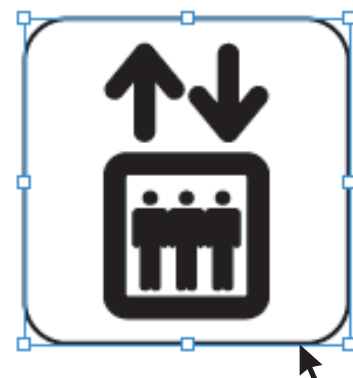
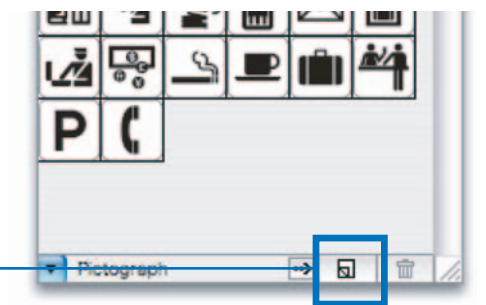
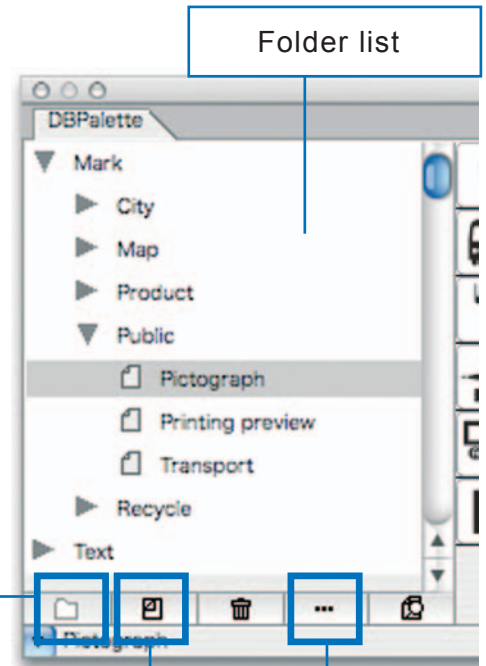
Kind:

Folder:

Group:

Created: 07/04/26 14:50
Modified: 07/04/26 14:50

Comments



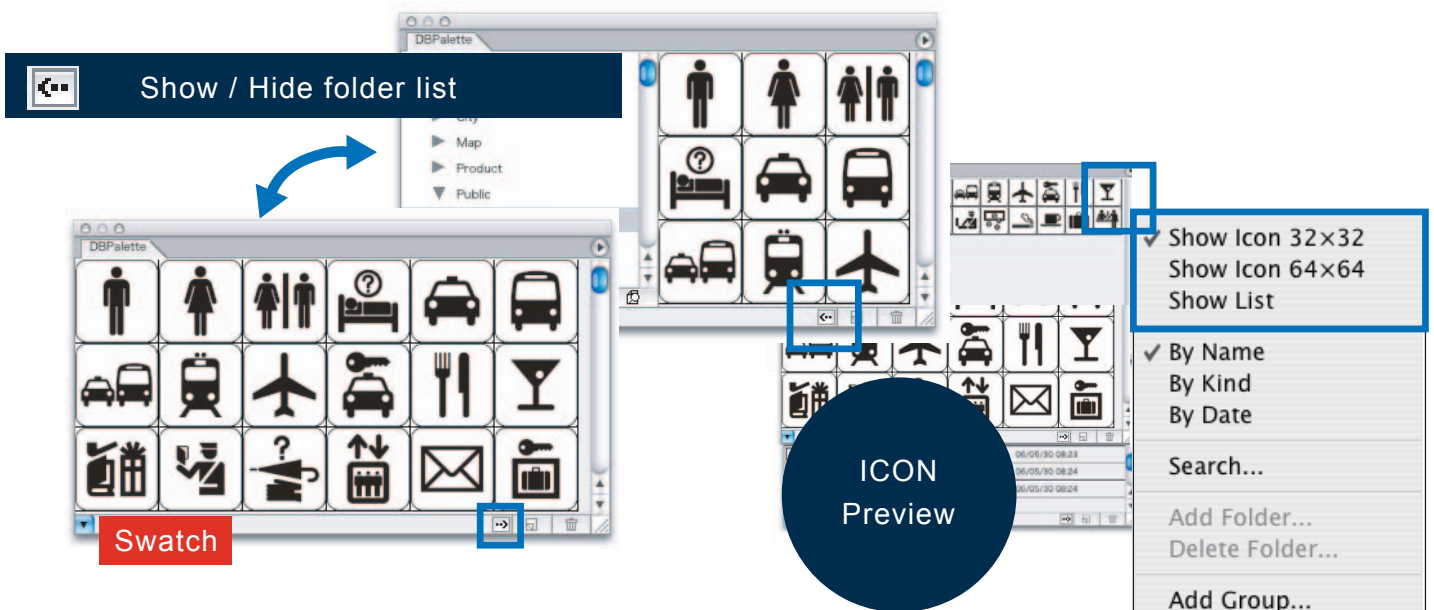
3: Swatch Preview

How to show the palette in a different view

You can make DB Palette more useful by applying the view choice "Show / Hide folder list" with different preview settings.

Show / Hide folder list

As mentioned above, pressing the " " button changes the swatch preview of either icon mode or icons & list mode. You can easily change the swatch preview by size of icons (32*32 / 64*64), objects ordered by name, kind and date.



4: Sort / Search & Find

When you want to find the objects you're looking for, Sort by name, kind and date are possible. Also use the search & find function. It searches objects for any keywords with criteria such as name, kind and comments. If the result is too many to identify the one being looked for, a more specific search can be made.

- **Capital letters & small letters**

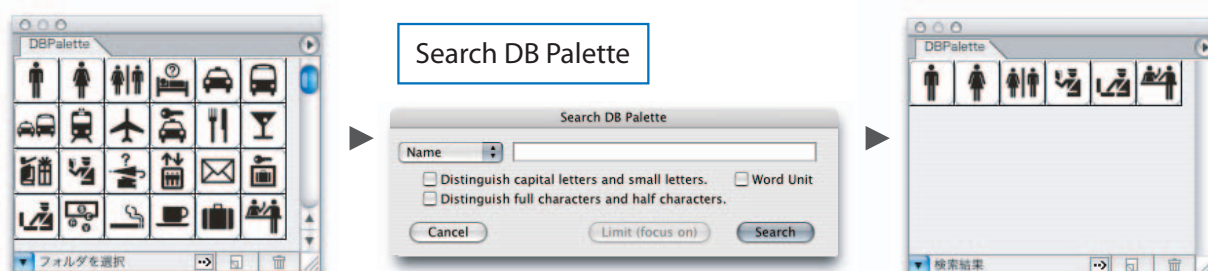
If you tick this field, the search distinguishes capital letters and small letters.

- **Full type & Semi type**

If you tick this field, the search distinguishes full type and semi type.

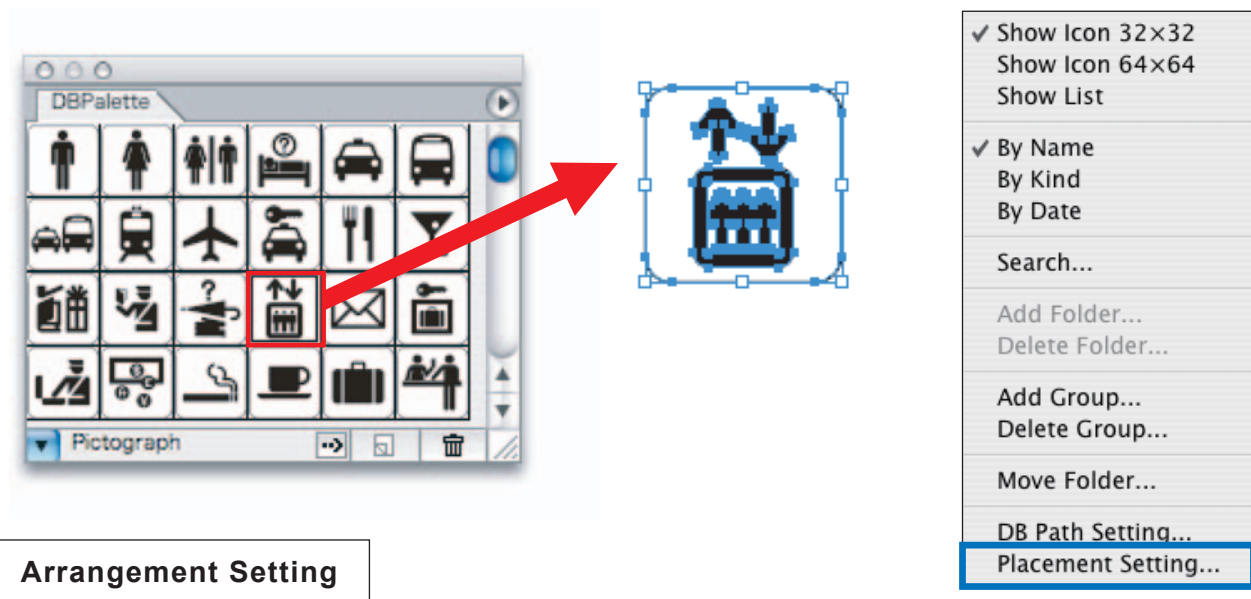
- **Words (units per word)**

For instance, when you are looking for an object where one of the keywords is ABC, the search won't hit it if you type ABCD. (Can be found with "ABC 1, ABC 2 and ABC D - but, as mentioned, be sure of spacing and word unit).



5: Place objects

To place objects, simply drag the object from DB Palette image preview and drop into the document. Place setting preference is available, when you place them in the exact place you want



The purpose of this setting is to control the arrangement of the objects and help you to place them in the right position.

Bounding Box movement origin point setting

Depending on the movement origin, the bounding box can be moved based on the setting when you place the object.

Control Features

• Snap to Grid (+ Grid Spacing)

Depending on the grid dimension set, the right side length and breadth movements set by Grid Spacing can be controlled.

• Snap to Anchor point

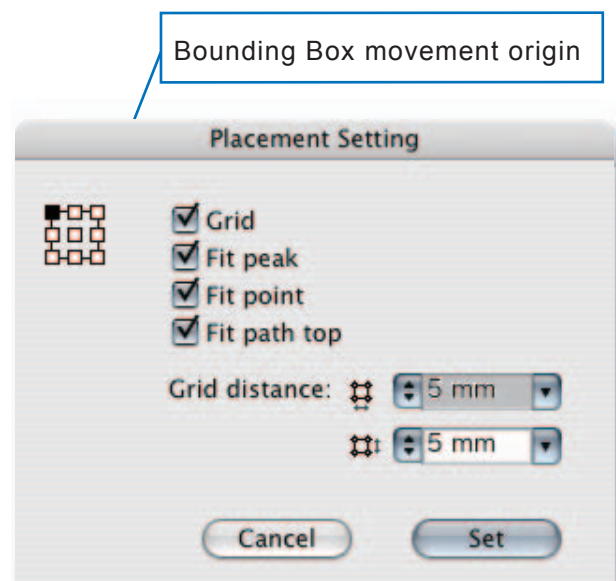
It snaps at the anchor point, the cursor changes to

• Snap to intersection

It snaps at the point of intersection where the paths cross, the cursor changes to

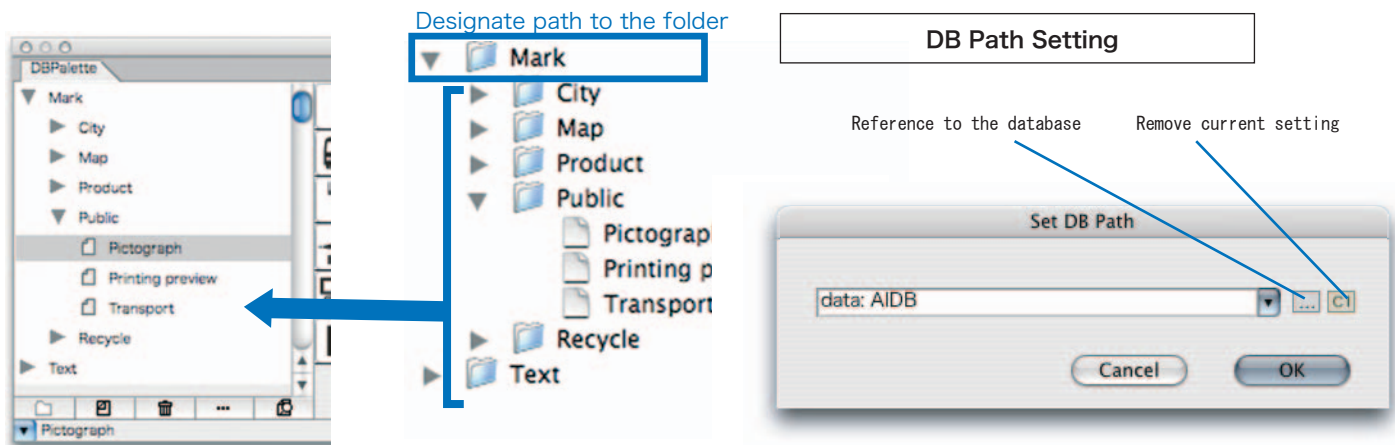
• Snap to path

It snaps the entire paths top and the cursor changes to



6: Data base folder path setting

DB path setting in the option menu refers to the data base folder which can be chosen by pressing the browser button to find and set the location in your computer. The place can be anywhere as long as your computer is connected to the network.

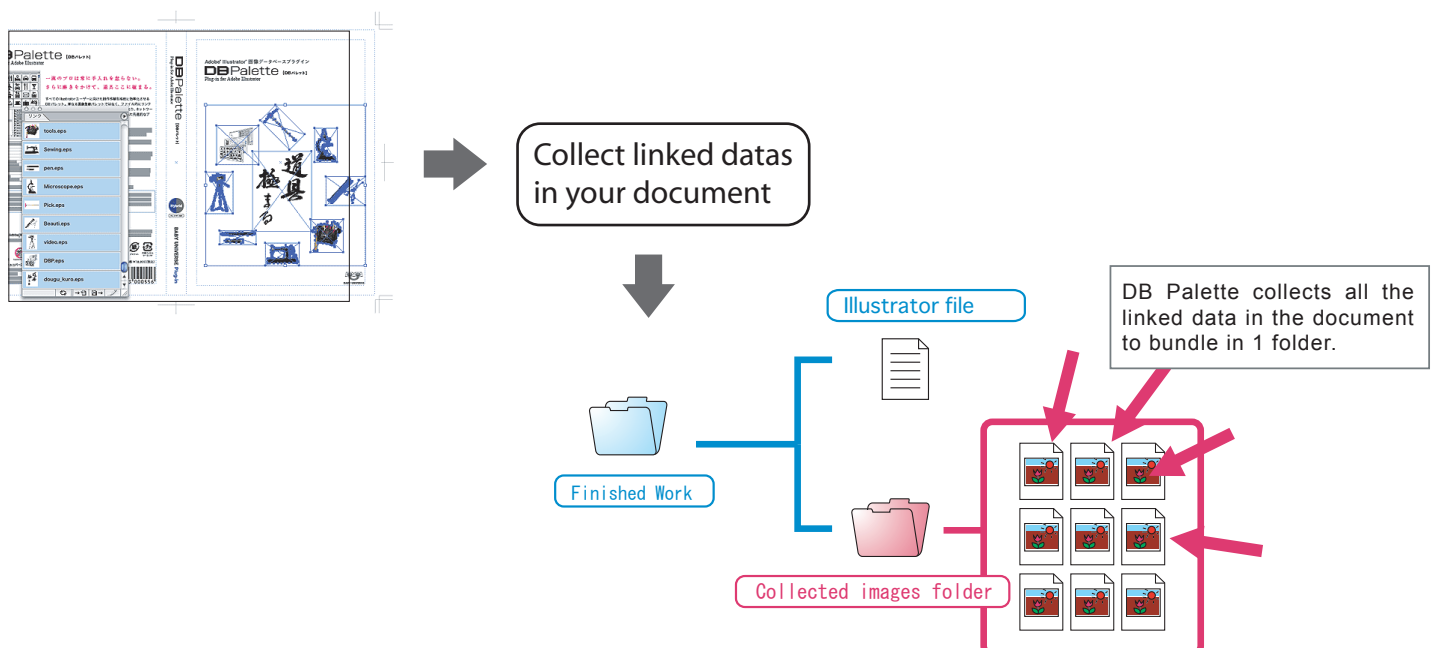


7: Collect output data

Select the "Collect linked files" from File in Adobe Illustrator menu bar.

Beside the image registration function, DB Palette can also support your job when the finished art works are sent to the printing company. Even if the linked image data is scattered in different folders (which isn't convenient for the operator to collect and bundle into 1 folder to submit to the printing company) DB Palette pursues the path to the linked source of the image data to collect them. (The data are copied - therefore the image data to be collected doesn't disappear from the original folder.)

In the case where a large number of linked images or bigger sized images are on the document, it may take time to collect all the data.



For further information about DB Palette

? Please send your request by email or fax
Make sure to attach your ID and serial number of the product.

BABY UNIVERSE Inc.

FAX: +81 466 55 3001

Email: info_eng@baby-universe.co.jp

? Visit us to check the latest information on DB Palette

<http://www.baby-universe.co.jp/plug-in/eng/>