

User's Guide to INSTALLATION and LICENSE REGISTRATION

**KonSi
Data Envelopment
Analysis
for Benchmarking**

www.dea-analysis.com

**User's Guide
to
INSTALLATION
and
LICENSE REGISTRATION**

Contents

1	TECHNICAL REQUIREMENTS	3
2	SOFTWARE FUNCTIONS	5
2.1	REALIZED CLASSICAL MODELS OF DATA ENVELOPMENT ANALYSIS.....	5
3	SOFTWARE MODULES.....	6
3.1	HOW TO RUN OUR SOFTWARE ?	6
4	LICENSES FOR KONSI-DEA ANALYSIS FOR BENCHMARKING	7
5	HOW TO BEGIN USING OUR SOFTWARE.....	8
6	OUR SOFTWARE INSTALLATION	9
6.1	WINDOWS 7. HOW TO BEGIN INSTALLING OUR SOFTWARE?	9
6.2	WINDOWS XP. HOW TO BEGIN INSTALLING OUR SOFTWARE?	10
7	HOW TO PAY FOR PURCHASED LICENSE	11
8	HOW TO REGISTER PURCHASED LICENSE OF OUR SOFTWARE UNDER WINDOWS 7	12
8.1	REGISTERING THE MODULE CREATOR	12
8.2	WHERE IS LICENSE KEY FILE LOCATED UNDER WINDOWS 7 ?	14
8.3	WINDOWS XP. DISTINCTIVE FEATURES OF SOFTWARE LICENSE REGISTRATION ...	17
8.4	HOW TO SEND YOUR REGISTRATION INQUIRY?	21
8.5	HOW TO SAVE ACTIVATED LICENSE KEY FILES ON YOUR COMPUTER	23
8.6	TESTING SUCCESSFUL LICENSE KEY FILE ACTIVATION	24

1 TECHNICAL REQUIREMENTS

Operating system

Our software may be used under **Windows 7, Vista** or **Windows XP**. You should have MS Office installed on your computer (MS Word, MS Excel).

When your computer works under Windows XP you must execute the actions described in Section 8.3.

Internet

Our software does not send or receive any information to or from the Internet.

Databases

Our software uses database management system **MS Access**.

Source Data and Import

To exclude any complexities of import for your real information, the source data must be prepared as an XLS file. You may create an XLS file containing your source data using MS Excel.

File formats of reports and pictures

Our software allows you to save generated report files in different formats such as **doc , xls**.

Created visual images and pictures may be exported into different formats such as **bmp**.

Users

A non-administrative privilege user may use our software. When your computer works under Windows 7 you don't have any problems if you are a non-administrative privilege user. However, if your computer works under Windows XP you must execute the actions described in Section 8.3.

Contacts

You may use our support service only sending to us your e-mails. Our e-mail address is shown on our website www.dea-analysis.com

2 SOFTWARE FUNCTIONS

If you are interested in teaching, researching and applying data envelopment analysis, then you will be pleasantly astonished by

KonSi-DEA 3D Visualization. Classical DEA Models & Concepts.

We use terms **3D Visualization** and **DEA**. Here and below, the term "**3D**" means **three-dimensional**" and the term "**DEA**" means "**data envelopment analysis**". The name of our software means that you may use our program to create visual graphic images of classical concepts of data envelopment analysis in three-dimensional parameter space. This space is constrained by three axes of parameters defined by your researched DEA task and applied classical DEA models supported by our software. Of course, you may research your DEA task when it has two, three or more parameters.

2.1 REALIZED CLASSICAL MODELS OF DATA ENVELOPMENT ANALYSIS

Shortly, our software allows you to work with the following DEA concepts:

- Dual DEA models (with lambda-coefficient)
- VRS model (Variable Return to Scale)
- Super-Efficiency VRS model (SuperVRS)
- Input OR output oriented models with Controlled OR uncontrolled parameters
- Slacks
- Best-performers (best)
- Poor-performers (poor)
- Target
- Target for super-efficiency performer

3 SOFTWARE MODULES

3.1 HOW TO RUN OUR SOFTWARE ?

To run our software, use commands:

Start → All programs → KonSi → KonSi DEA

4 LICENSES FOR KONSI-DEA ANALYSIS FOR BENCHMARKING

Our software named KonSi-DEA Analysis for Benchmarking has the following licenses:

- demo version license;
- purchased license.

DEMO VERSION LICENSE

The demo version is free.

After downloading, the demo version is installed on your computer. As the full version, the demo version allows you to research demo examples. Our demo examples are saved on your computer when you install the software. Do not change these demo examples. You cannot import your data to demo version.

The usage of the demo version has no time constraints.

PURCHASED LICENSE

Purchased license allows you to use our software on only one computer. Our price is shown on our website (www.dea-analysis.com).

Receiving a purchased license is described in details in Section 7.

UPDATE LICENSE

When you already have a purchased license and begin to work on another computer you may purchase an updated license to continue using our software. Price of updated license is less than price of purchased license which you buy for the first time.

5 HOW TO BEGIN USING OUR SOFTWARE

**To research your own DEA task
you have to execute the following steps:**

1. **Download** the archive containing the software and study materials.
2. **Open** the downloaded archive and allocate files from archives in a created directory on your computer.
3. **Study** user's guides.
4. **Install** the demo version of our software. Read Section 6.
6. **Study** the possibilities of software using demo examples. These examples contain real data.
7. **Purchase** the work software license (see Section 7). See the link "Buy now" on our website [http:// www.dea-analysis.com](http://www.dea-analysis.com) or on our affiliate sites.
8. **Receive our letter** containing the instructions for your further actions.
9. **Register purchased version.** (Read Section 8).
10. **Use** our software successfully for your DEA researches.

6 OUR SOFTWARE INSTALLATION

6.1 WINDOWS 7. HOW TO BEGIN INSTALLING OUR SOFTWARE?

You won't meet any difficulties for installation of our software if your computer works under Windows 7 or Vista. When you use Windows XP you should read the instructions placed in Section 6.2.

Warning

You must have administrator privileges to install our software.

Begin installation

First of all, you should reinstall the earlier software version and demo.

After opening the archive downloaded you should find the directory **\software**.

Find the file named **SetupDea.msi** in this directory. Select this file by cursor and doubly click on this file by left mouse button. Installation of the software will begin.

Install step by step

You install our software using standard installation wizard. Confirm the wizard question and go to the next step of installation process. You may select the drive on your computer where you would like to install our software. We name this drive as %SYSTEMDRIVE%.

After a few steps you will see the message:

KonSi-DEA 3D Visualization.

Classical DEA models has been successfully installed.

Find the installed software on your computer

After you successfully installed our software you may see the command menu :

Start → All Programs → KonSi – KonSi- DEA analysis for Benchmarking.

If you are using a demo version of our software, you may study possibilities and functions of our software using demo examples. You cannot import your data to the demo version.

If you have registered a purchased version, you may import your data and research your own DEA task. The procedure of license registration is described in Section 8.

6.2 WINDOWS XP. HOW TO BEGIN INSTALLING OUR SOFTWARE?

There are no difficulties to install our software under Windows XP.

Warning You must have administrator privileges to install our software.

To install our software under Windows XP :

- Find the file named SetupDea.msi in the directory **\software**
- Select this file by cursor and doubly click on this file by left mouse button.
- Answer to the questions given by the installation wizard.

After you have installed our software, you must register license key file.

Generate the License Key Files (only for purchased version)

Run KonSi-DEA analysis for Benchmarking, execute the command **Help → License Key Manager** and generate its License Key File. The procedure of software license registration has some distinctive features under Windows XP (see Section "DISTINCTIVE FEATURES OF SOFTWARE LICENSE REGISTRATION UNDER WINDOWS XP").

7 HOW TO PAY FOR PURCHASED LICENSE

To research your real DEA task, you may purchase license according to our price. Our price is shown on our website <http://www.dea-analysis.ru> You may use your VISA / MASTER CARD or WIRE TRANSFER. See the link "Buy now" on our website or on our affiliate sites. You may inquire an invoice to purchase the license.

When you have purchased the license you must receive the PURCHASED LICENSE. When we receive your money we send you a letter by e-mail. Our letter will contain detailed instructions for you. Now we inform you about your future actions.

To receive your purchased license, you must execute the following actions:

1. **Receive our letter** containing the instructions for you. To receive our letter you must use your e-mail box. If you have not received our letter, check your anti-spam settings and the Spam folder contents. You must use a real e-mail when you fill in the form for purchasing your license by VISA or MASTER CARD , etc.

2. **Download the software.**

3. **Open downloaded archive.**

4. **Install** the software.

5. **Generate** the License Key files (see Section 8).

6. **Fill in** the registration form on purchased license (see Section 8.4)

7. **Send us** your e-mail with attached License Key file. The first file is your filled purchased license form. The other files are your license key file generated on your computer using the registered software.

8. **Receive** our letter. After that, we will send you the activated license key file according to your purchased license.

9. **Save** the activated license key file on your computer (see Section 8.5).

10. **Run** our software.

8 HOW TO REGISTER PURCHASED LICENSE OF OUR SOFTWARE UNDER WINDOWS 7

To start studying our software or working with it you have to register your purchased license.

8.1 REGISTERING THE MODULE CREATOR

Step 1. Run SOFTWARE

After you successfully installed our software you may see the command menu :

Start → All Programs → KonSi – KonSi- DEA analysis for Benchmarking.

Step 2. Run LICENSE KEY MANAGER

When SOFTWARE begins to work you may see its main window. You have to run the command named License Key Manager. For that you have to click the **Help menu** and then the item **License Key Manager**.

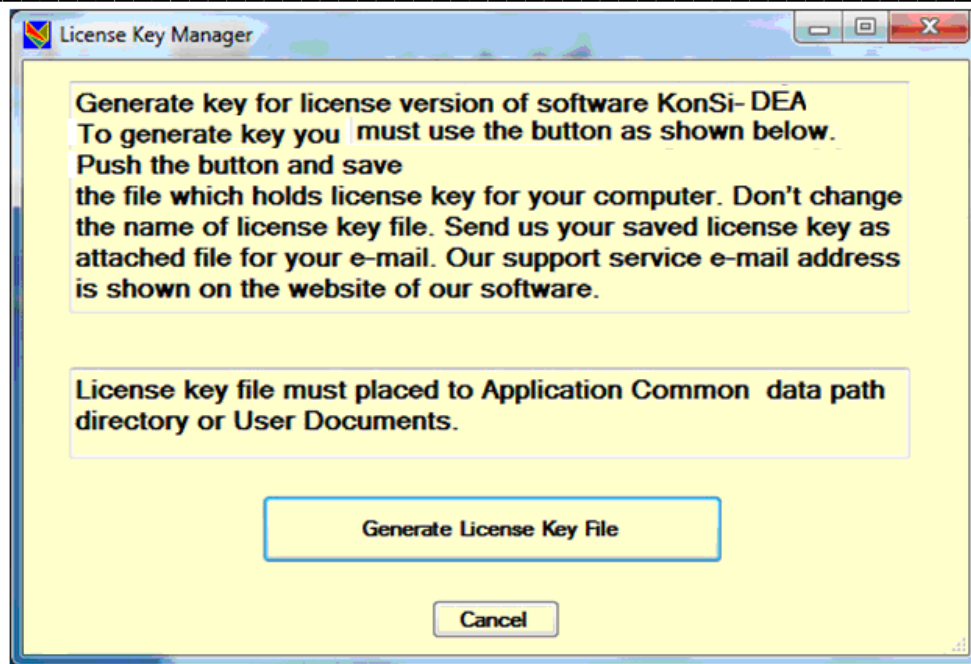
Help menu → License Key Manager

Step 3. Generate License Key File

After you run License Key Manager you will see the form as shown on Picture 1. Click the button Generate License Key File.

After that, a License Key File is automatically generated in your computer. The file contains information about unique parameters of your computer. This information is applied to protect our software from unlicensed using.

After that, a License Key File is automatically generated in your computer. The file contains information about unique parameters of your computer. This information is applied to protect our software from unlicensed using.



Picture 1 Generation of your License Key File for CREATOR module.

Step 4. Save License Key File

After clicking Generate License Key File you will see a dialog box "Save As". Click on the button Save in this dialog box.

The License Key File named **KeyDeaEng.xml** is saved in the following directory:

\ProgramData\KonSi\Dea analysis

This path is created automatically on the disk where your system is installed.

WARNING !

DO NOT CHANGE this path and the name of the file

KeyDeaEng.xml

Step 5. Send us your License Key File

After saving the file **KeyDeaEng.xml** on your computer you will see the following message: **License Key File generated successfully**

Find this file named **KeyDeaEng.xml** on your computer and then send it to us by e-mail.

- Read **Where is License Key File located?** Section 8.2 .
- Read **How to send your registration inquiry?** See Section 8.4 .

8.2 WHERE IS LICENSE KEY FILE LOCATED UNDER WINDOWS 7 ?

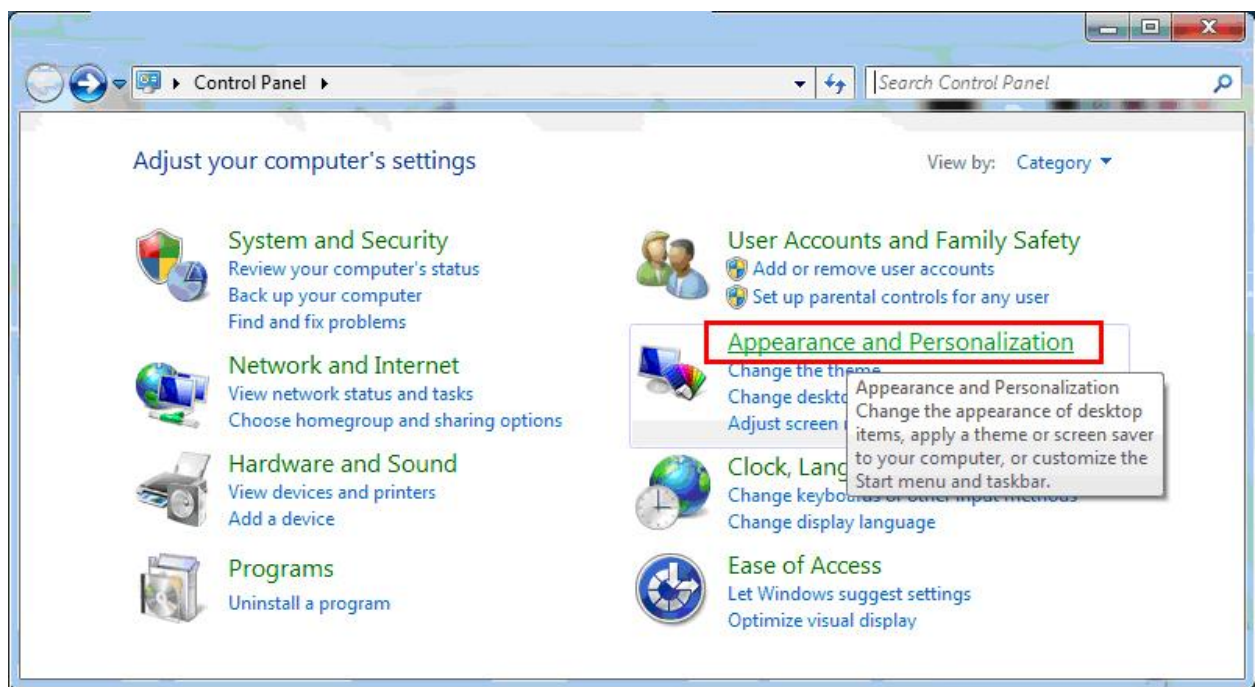
In this Section you will find instructions how to find the directory containing the License Key File. This file is automatically generated and saved in directory with the path:

%SYSTEMDRIVE%\ProgramData\KonSi\DEA Analysis

The ProgramData folder is hidden on your computer. By default, Windows 7 does not show names of directories which are created automatically. These files and folders are hidden by Windows 7.

You have to set this parameter for your Windows 7. Below the procedure of setting the directory properties is described.

Step 1. Run **Control Panel**. You will see the form which is shown on Picture 2.

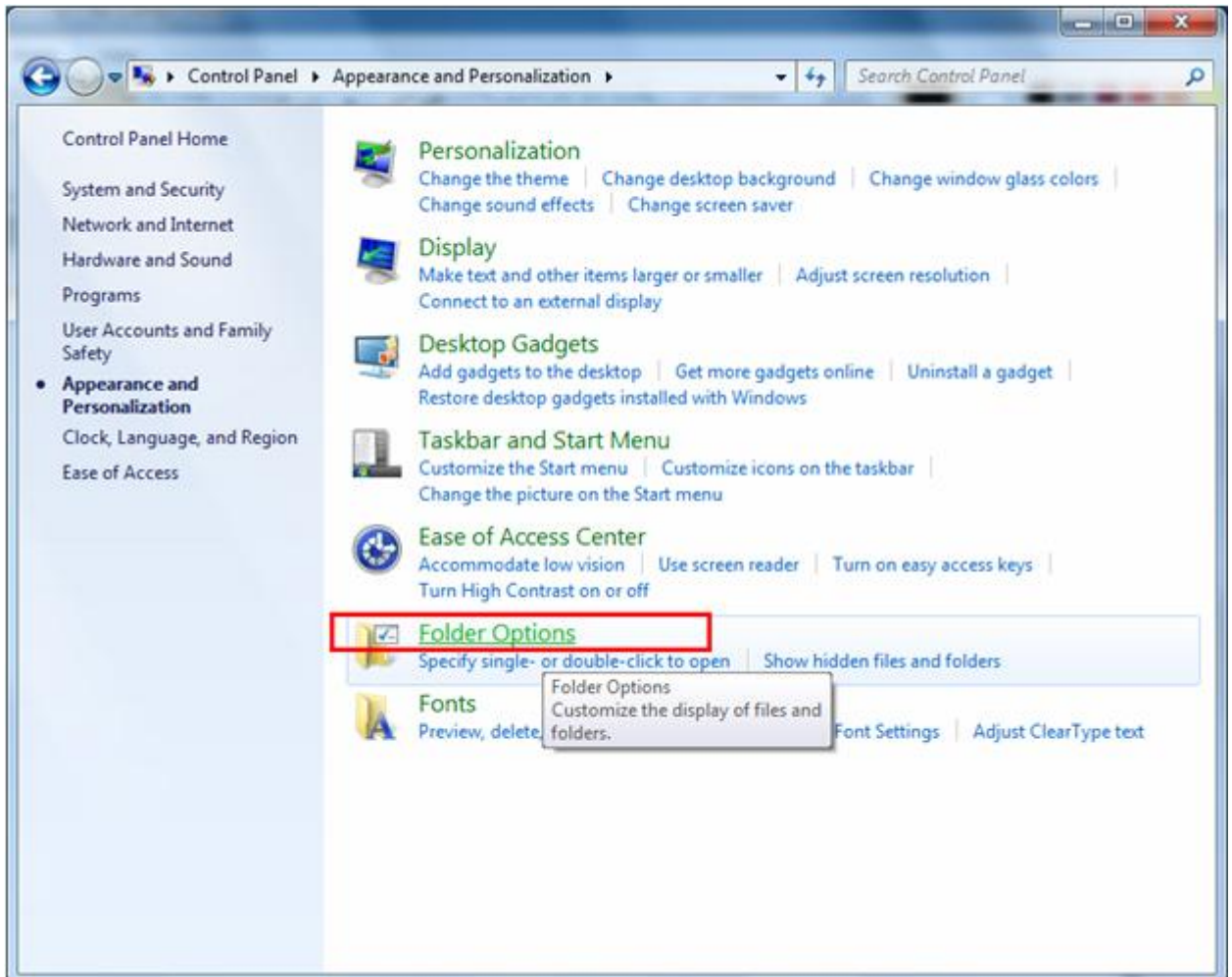


Picture 2 Control Panel

Step 2. Select **Appearance and Personalization**.

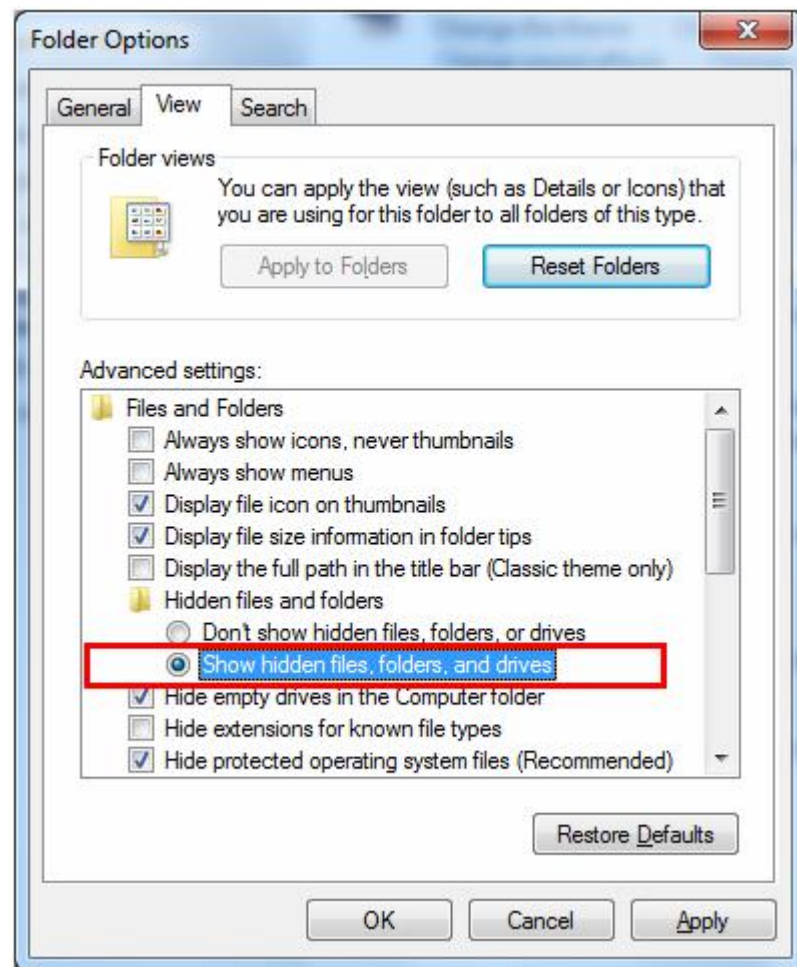
This action is shown on Picture 2.

Step 3. Select the setting **Folder Options**. See Picture 3.



Picture 3 Selecting Folder Options

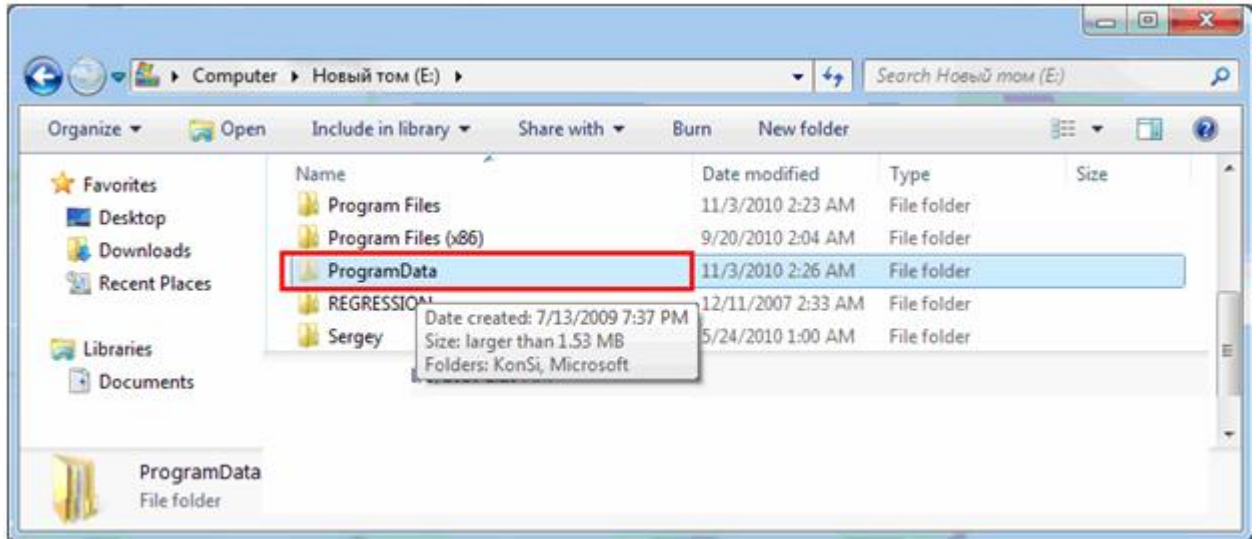
Step 4. Set the option **Show hidden files, folders, and drives** on the View tab. See Picture 4.



Picture 4 Folder Options command is selected

Step 5. Open the drive where you installed our software.

After the changes you have made you can see the directory named **ProgramData**. See Picture 5.



Picture 5 The visible folder named ProgramData

Step 6. Go through the path

%SYSTEMDRIVE%\ProgramData\KonSi\DEA Analysis

Step 7. Copy the License Key File as a file named **KeyDeaEng.xml** and put it into your personal work directory to prepare the attached file for e-mail.

8.3 WINDOWS XP. DISTINCTIVE FEATURES OF SOFTWARE LICENSE REGISTRATION

Usually, the installation of our software does not cause any problems when your computer works under Windows XP. But in this case, the procedure of software license registration has some distinctive features.

When you register the temporary or work software license on your computer you should run the module CREATOR and click **Help → License Key Manager**. After that, click Generate License Key File. This file is automatically generated in the folder:

%SYSTEMDRIVE%

Documents and Settings\All Users\Application Data\KonSi\DEA Analysis

%SYSTEMDRIVE% stands here for the disk drive selected to create folders for installing our software.

By default, the folder Application Data is hidden under Windows XP.

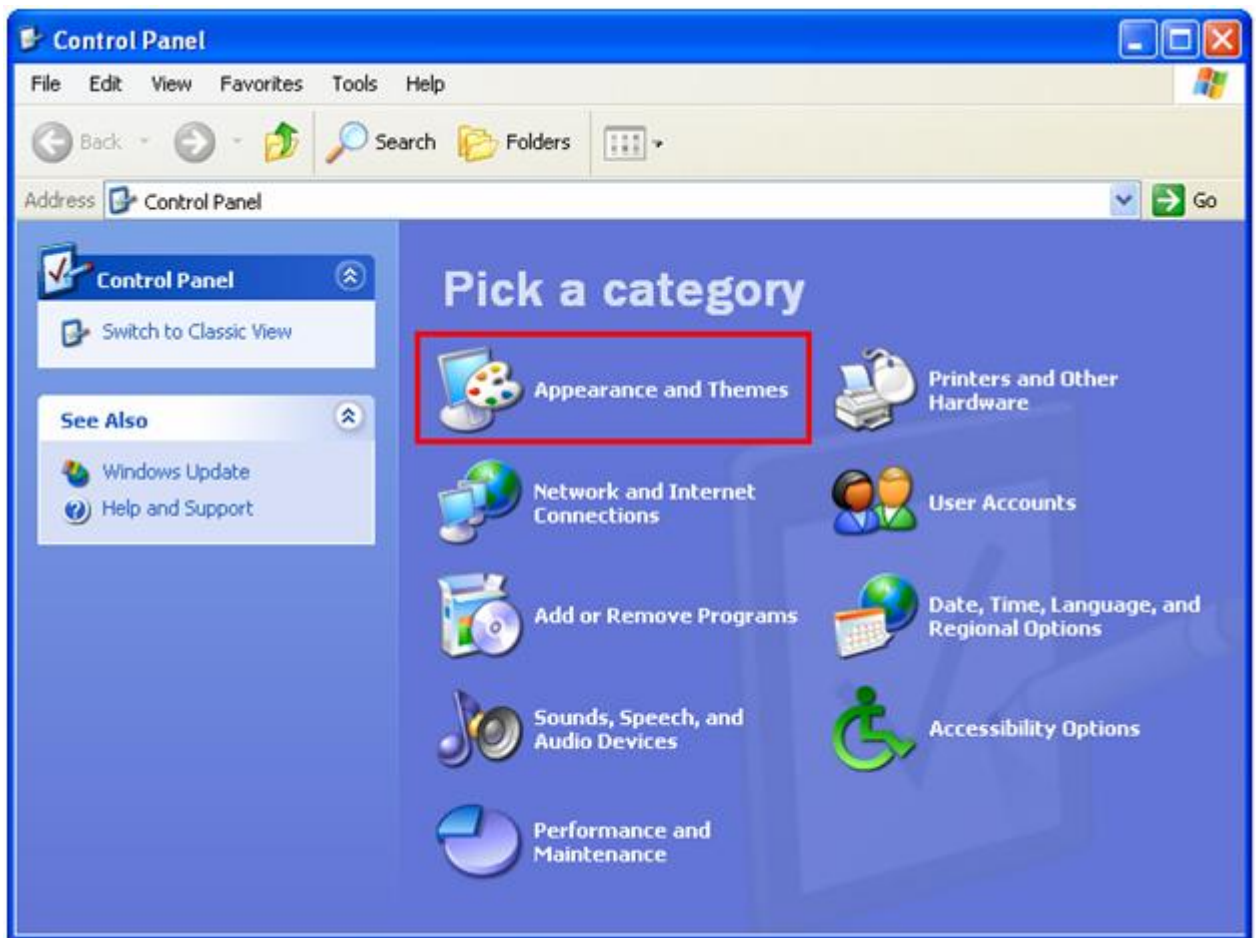
To get the access to this folder you should allow Windows to show hidden folders and files.

You should execute the following steps:

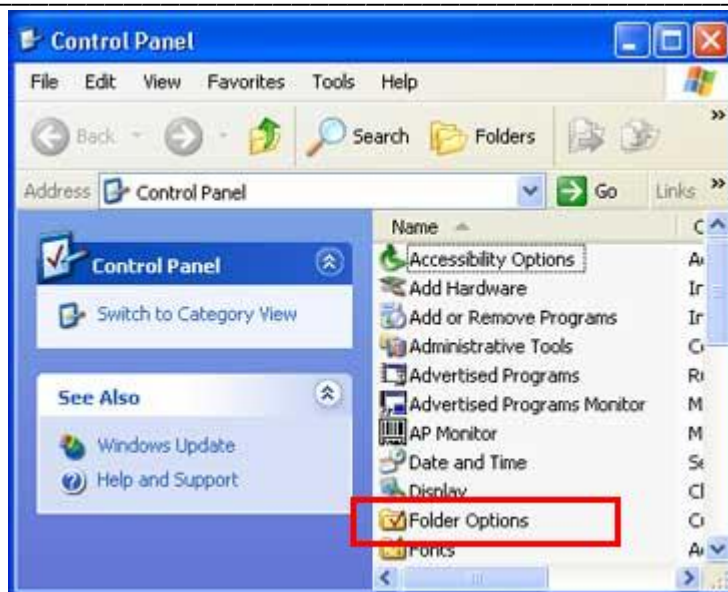
Step 1. Run **Control Panel** from the **Start** menu.

The **Control Panel** may have two views:

- Category View (see Picture 6)
- Classic View (see Picture 7)

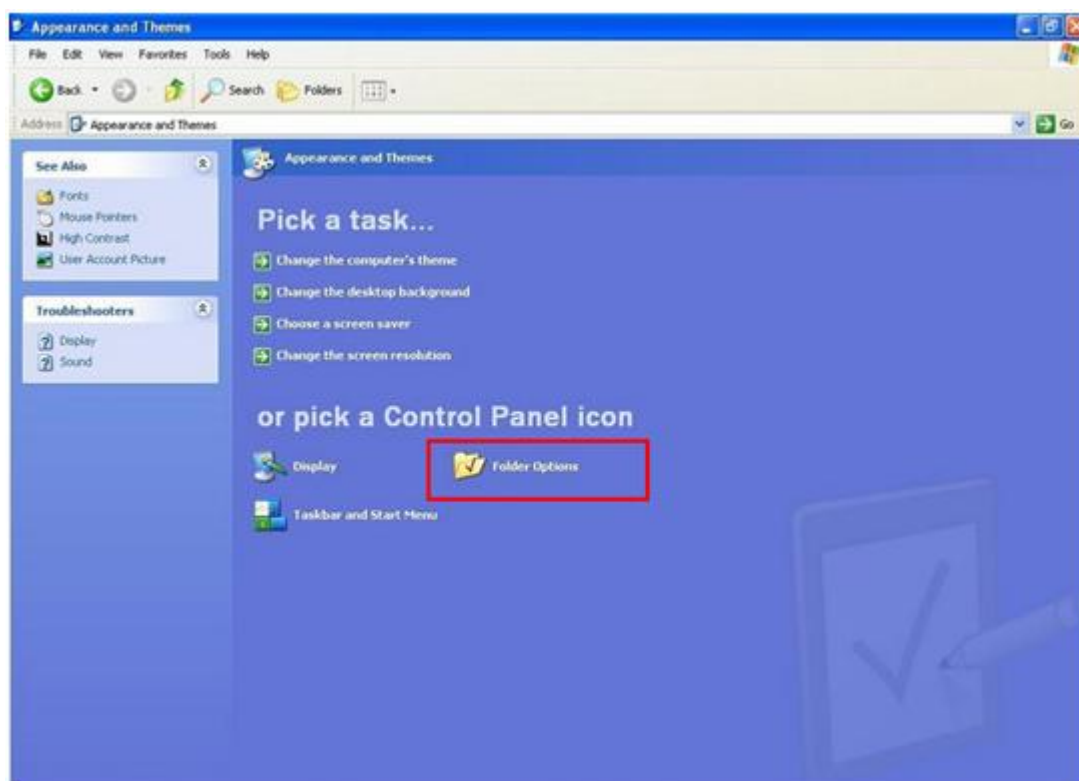


Picture 6 Category View



Picture 7 Classic View

Step 2. If the items of Control Panel have the form Category View shown by the command Switch to Category View as on the Picture 6 then you should select the category Appearance and Themes, click Folder Options as on the Picture 8 and go to step 4



Picture 8 Appearance and Themes

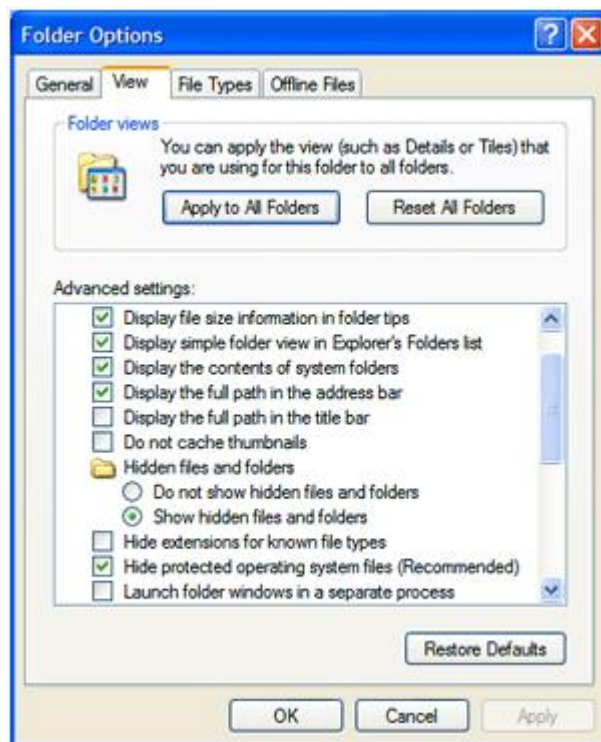
Step 3. If the items of Control Panel have the form Classic View shown by the command Switch to Classic View as on Picture 7 then you should select Folder Options and go to step 4.

Step 4. Open the View tab in the Folder Options window and set the option(See Picture 9):

Advanced Settings →

→ Hidden files and folders →

→ Show hidden files and folders



Picture 9 Allowing your system to show hidden files and folders

Step 5. Click **OK** to close the Folder Options window

8.4 HOW TO SEND YOUR REGISTRATION INQUIRY?

You have generated your License Key Files for purchased license software. After that, you have file generated for SOFTWARE:

KeyDeaEng.xml

To start using our software you must receive your activated License Key File and put this file on your computer.

You must prepare the letter and send it to KonSi using the e-mail address:

support@dea-analysis.com

Your actions:

1. **Fill in the following registration form** and save it as a separate file. The blank of this registration form is shown below and is allocated in the archive downloaded (see *registration_license_form_benchmarking.pdf* /*.doc *.txt). You may download this form from our website. You may use formats "*.doc", "*.pdf" or "*.txt".

2. **Create your e-mail letter** with the attached files. You must attach three files to your e-mail letter as follows:

- The first file is your REGISTRATION FORM,
- The second file is the license key file of SOFTWARE named **KeyDeaEng.xml**

We activate your license file and send back it for you.

3. **You will receive activated license key file** within a few hours.

4. **You must save the received license key** file on your computer using the instructions described below .

REGISTRATION FORM FOR PURCHASED LICENSE

I have read and agree with the purchased license for the "KONSI – DEA ANALYSIS for BENCHMARKING" software. I will use it under condition that only one activated license key file is used on only one computer. When I begin to work on another computer I may purchase an updated license to continue using this software. Fill in below and send by e-mail to KonSi Ltd

support@dea-analysis.com

Order Date: _____

User Name: _____

User Title, Working Status (Professor, PhD student, manager etc)

User e-mail: _____

User website or personal homepage

http:// _____

User Address:

Country: _____

State: _____

City: _____

User Company or University:

Department / Faculty:

Company or University Website

http: // _____

Date When You have purchased the license: _____

Do You purchase our software for the first time? ____ Yes ____ No

Do You purchase our software as an update version? ____ Yes ____ No

What products have you purchased?:

UNLIMITED VERSION

_____ Unit Price _____ Qty _____ Amount

ONLY 75 units :

_____ Unit Price _____ Qty _____ Amount

TOTAL : _____

Please, write a some words about your DEA research – your purpose, number of researched objects (dmu), application of DEA results, a kind of business or other activity.

8.5 HOW TO SAVE ACTIVATED LICENSE KEY FILES ON YOUR COMPUTER

After sending to KonSi Ltd the license key file, you have received back the activated license key file. Now you must save the activated license key file on your computer using the instructions described below.

The KonSi letter received by e-mail contains the attached file. This attached file are activated license key file. You must save this attached file and then move it to the folders of registered SOFTWARE on your computer.

Execute the following actions:

WINDOWS 7

If your computer works under WINDOWS 7 then:

Move the activated License Key File **KeyDeaEng.xml**

After you received the activated License Key File by e-mail from KonSi you have to put it into the directory **DEA Analysis** with the path

%SYSTEMDRIVE%\ProgramData\KonSi\ DEA Analysis

WINDOWS XP

If your computer works under WINDOWS XP

Save the activated License Key File as **KeyDeaEng.xml**

After you received the activated License Key File by e-mail from KonSi you have to put it into the folder **DEA Analysis** with the path

%SYSTEMDRIVE%

Documents and Settings\All Users\Application Data\KonSi\ DEA Analysis

After saving the activated License Key File on your computer you should check if your actions were successful (see Section 8.6).

8.6 TESTING SUCCESSFUL LICENSE KEY FILE ACTIVATION

You must save the activated license key files on your computer and then you should test if the activation was successful.

You can see all commands in the main window of SOFTWARE. And you may open the file with demo example. You may change a value of parameter and save changed file as new file. Exit from software and run program. You may open the new file with change data.

After registration of software you may import your data.