



**PASS-GUARANTEED.COM**

**100% Money Back Guarantee!!!**

**Your #1 Certification Training Resource**

**Product Details from Pass-Guaranteed.com:**

**Storage Attached Network (SAN) Specialist Exam**

**E20-351**

*Demo Version*

*Download Full Version*  
*Visit*

<http://www.Pass-Guaranteed.com>

**Complete Certification Training Solutions**



## **Study Tips**

*This product will provide you with questions and answers carefully compiled and written by our Expert Senior Certified Staff. Our practice questions are designed to help you learn the concepts behind the questions rather than be a strict memorization tool.*

### **Important Note:**

### ***Please Read Carefully***

*Repeated readings of our Pass-Guaranteed.com Practice Exam will increase your comprehension. We constantly add to and update our Practice Exams with new questions, answers and explanations, so check that you have the latest version of this Practice Exam before you take your exam.*

*For security purposes, each PDF file is encrypted with a unique serial number associated With your Pass-Guaranteed.com account information. In accordance with International Copyright Law, Pass-Guaranteed.com reserves the right to take legal action against you should we find copies of this PDF file distributed to other parties.*

### ***Update Notifications (Latest Version)***

*We are constantly reviewing our products. New material is added and old material is revised. Free Updates are available for 180 days after purchase. If you purchased a bundle, you will have Free Updates for 1 YEAR!*

*You can signup to our newsletter for instant notification whenever an update is released by becoming a Pass-Guaranteed.com member at: <http://www.pass-guaranteed.com/log.htm>*

*By becoming a Pass-Guaranteed.com member, you also get a chance to win a FREE Practice Exam of your choosing. We give away 3 Pass-Guaranteed.com Practice Exams every week to 3 lucky winners.*

### ***Pass-Guaranteed.com Product Specials***

*Pass-Guaranteed.com Custom Bundle Requests, cover all Pass-Guaranteed.com Products!!! You can visit our Special Bundle Discounts from Pass-Guaranteed.com or make your own Custom Bundle Request with Pass-Guaranteed.com here: <http://www.pass-guaranteed.com/bundles.htm>*

***Pass-Guaranteed.com Custom Bundle Request Form let's you create your own Bundle Of Products!!! You can select and group any of our products for your Custom Bundle and we will give you up to a **50% Discount** on your Custom Bundle Package. This includes our [Practice Test Questions](#), [Online Course Tutorials](#), [Study Guides](#), [Lab Scenarios](#) and our [Certified Online Instructor](#) service.***

*Please visit: <http://www.pass-guaranteed.com/custom-request.htm> If you would like to purchase a Custom Bundle from Pass-Guaranteed.com.*

**QUESTION: 1**

What is a valid CLARiiON World Wide Node Name?

- A. 50:06:01:63:39:a0:0d:84
- B. 50:06:01:60:b9:a0:0d:84
- C. 50:06:01:6b:39:a0:0d:84
- D. 21:00:00:e0:8b:86:88:db

**Answer: B**

**QUESTION: 2**

In CLARiiON environments, to perform management from a host that has an agent installed, the storage must be added as a Privileged User in a specific file.

Which file is this?

- A. agent.cfg
- B. agent.config
- C. naviagent.cfg
- D. naviagent.config

**Answer: B**

**QUESTION: 3**

Exhibit



What is the name of the pictured connector used for Ethernet connections?

- A. RJ-8
- B. RJ-11
- C. RJ-45
- D. RJ-48

**Answer: B**

**QUESTION: 4**

Which architecture allows for initiators to exist in an Ethernet environment while the target storage exists in a Fibre Channel environment?

- A. Bridging
- B. Routing
- C. Switching
- D. Tunneling

**Answer: A**

**QUESTION: 5**

A company has decided to use all of SAN Advisors features.

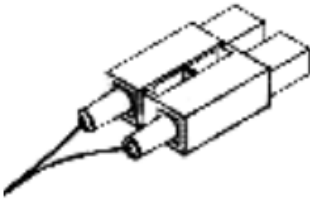
What will this company also need?

- A. An Internet connection, Oracle 8, and Excel 2002
- B. An Internet connection, Visio 2002, and Excel 2002.
- C. Microsoft SQL 2000 and Excel 2002
- D. Oracle 8 and Excel 2002

**Answer: B**

**QUESTION: 6**

Exhibit



Which type of connector is the pictured component known as?

- A.FC connector
- B.LC connector
- C.RJFC connector
- D.SC connector

**Answer: D**

**QUESTION: 7**

Exhibit

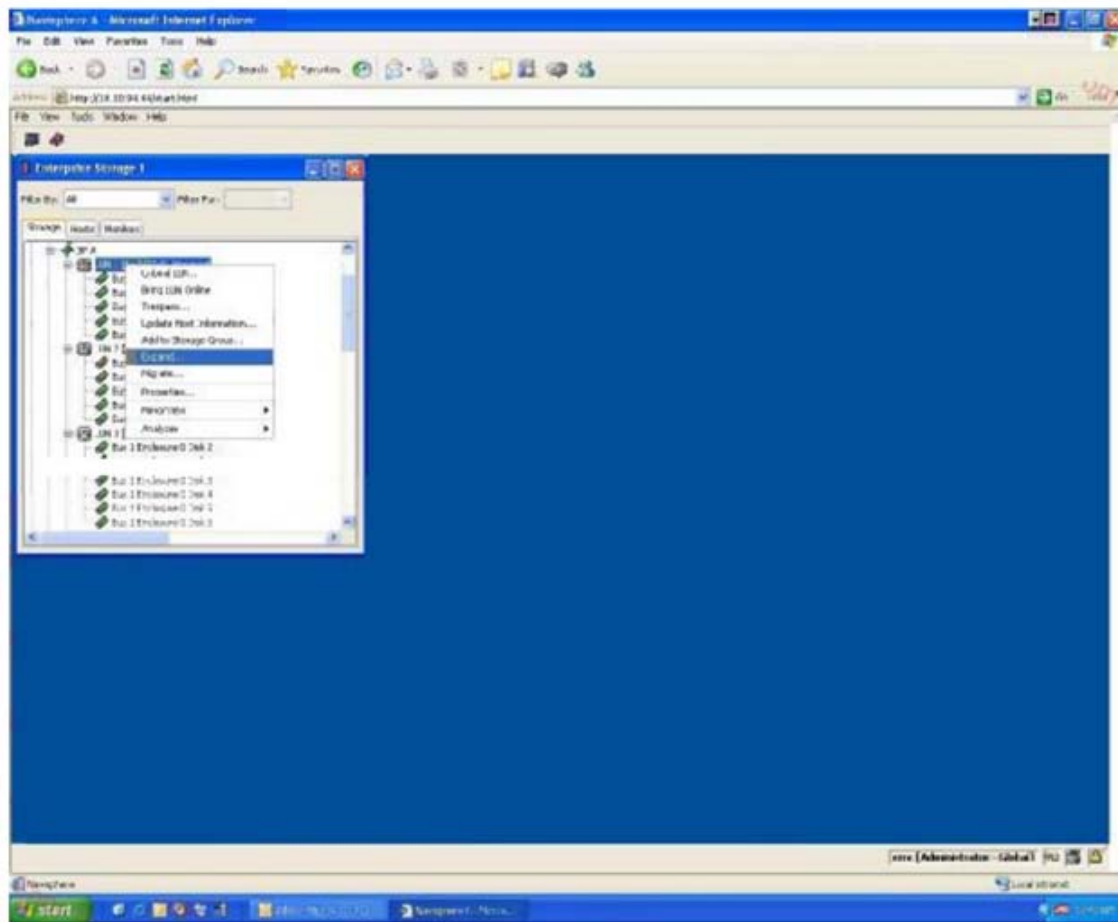


What is indicated by this icon displayed in the PowerPath Monitor Taskbar Icons?

- A. Degraded
- B. Failed
- C. Server Not Responding
- D. Standard

**Answer:** A

**QUESTION:** 8  
Exhibit



In the diagram, what does the highlighted command do?

- A. Creates a metaLUN
- B. Creates a storage group
- C. Expands a RAID group
- D. Expands a storage group

**Answer:** A

**QUESTION:** 9

Which SAN-based device provides critical server CPU offload and frees servers to perform application processing?

- A. FC-SW
- B. Host bus adapter
- C. Multimode fibre cable
- D. SFP

**Answer:** B

**QUESTION:** 10

What is the maximum bandwidth that a switched fabric can reach?

- A. Link rate times 128
- B. Link rate times 2
- C. Link rate times 256
- D. Link rate times number of ports

**Answer:** D

**QUESTION:** 11

What does the Fibre Channel Management Integration, Management Information Base (FCMGMINT-MIB) provide?

- A. A heterogeneous method to manage multiple devices across a SAN
- B. A simplified approach to setting up EMC arrays in new Fibre Channel environments
- C. Applications used to set up Fibre Channel networks
- D. The UDP protocol as a method to manage a SAN

**Answer:** A

**QUESTION:** 12

In which situation does the Fibre Channel protocol reach data rates up to 10 GB/s?

- A. When FC data is sent over IP through a multiprotocol router
- B. When used as ISLs (E\_Ports) on all switches
- C. When used as ISLs (E\_Ports) on supported switches
- D. When used in a CAS environment (content addressed storage)

**Answer: C**

**QUESTION: 13**

Which ports are used for interswitch links (ISL)?

- A. E\_Ports
- B. F\_Ports
- C. FL\_Ports
- D. N\_Ports

**Answer: A**

**QUESTION: 14**

The Fibre Channel standard defines a layer protocol. Which level serves as the transport layer?

- A. FC-1
- B. FC-2
- C. FC-3
- D. FC-4

**Answer: D**

**QUESTION: 15**

The Fibre Channel standard defines a layer protocol.

Which level serves as the physical layer?

- A. FC-0
- B. FC-1
- C. FC-2
- D. FC-3

**Answer: A**

**QUESTION: 16**

Which Fibre Channel layer is responsible for Process Logins?

- A. FC-1
- B. FC-2
- C. FC-3
- D. FC-4

**Answer: D**

**QUESTION: 17**

Which Fibre Channel layer covers media, the associated drivers, and receivers capable of operating at a wide range of speeds?

- A. FC-0
- B. FC-1
- C. FC-4
- D. UPL

**Answer:** A

**QUESTION:** 18

Which Fibre Channel layer is responsible for link initialization and recovery?

- A. FC-1
- B. FC-2
- C. FC-3
- D. FC-4

**Answer:** A

**QUESTION:** 19

How many bits are in a Fibre Channel address?

- A. 16
- B. 24
- C. 64
- D. 128

**Answer:** B

**QUESTION:** 20

In a switched fabric environment, what happens when a N\_Port is connected to a F\_Port?

- A. The fabric login begins associating the physical address and the network MAC address.
- B. The fabric login begins associating the physical address and the NAA.
- C. The fabric login begins associating the physical address and the World Wide Name.
- D. The fabric login begins associating the World Wide Name and the frame address.

**Answer:** C