



**PASS-GUARANTEED.COM**

**100% Money Back Guarantee!!!**

**Your #1 Certification Training Resource**

**Product Details from Pass-Guaranteed.com:**

## **Networked Storage - NAS Implementation Exam**

**E20-370**

*Demo Version*

*Download Full Version*  
*Visit*

<http://www.Pass-Guaranteed.com>

### **Complete Certification Training Solutions**



## **Study Tips**

*This product will provide you with questions and answers carefully compiled and written by our Expert Senior Certified Staff. Our practice questions are designed to help you learn the concepts behind the questions rather than be a strict memorization tool.*

### **Important Note:**

### ***Please Read Carefully***

*Repeated readings of our Pass-Guaranteed.com Practice Exam will increase your comprehension. We constantly add to and update our Practice Exams with new questions, answers and explanations, so check that you have the latest version of this Practice Exam before you take your exam.*

*For security purposes, each PDF file is encrypted with a unique serial number associated With your Pass-Guaranteed.com account information. In accordance with International Copyright Law, Pass-Guaranteed.com reserves the right to take legal action against you should we find copies of this PDF file distributed to other parties.*

### ***Update Notifications (Latest Version)***

*We are constantly reviewing our products. New material is added and old material is revised. Free Updates are available for 180 days after purchase. If you purchased a bundle, you will have Free Updates for 1 YEAR!*

*You can signup to our newsletter for instant notification whenever an update is released by becoming a Pass-Guaranteed.com member at: <http://www.pass-guaranteed.com/log.htm>*

*By becoming a Pass-Guaranteed.com member, you also get a chance to win a FREE Practice Exam of your choosing. We give away 3 Pass-Guaranteed.com Practice Exams every week to 3 lucky winners.*

### ***Pass-Guaranteed.com Product Specials***

*Pass-Guaranteed.com Custom Bundle Requests, cover all Pass-Guaranteed.com Products!!! You can visit our Special Bundle Discounts from Pass-Guaranteed.com or make your own Custom Bundle Request with Pass-Guaranteed.com here: <http://www.pass-guaranteed.com/bundles.htm>*

***Pass-Guaranteed.com Custom Bundle Request Form let's you create your own Bundle Of Products!!!** You can select and group any of our products for your Custom Bundle and we will give you up to a **50% Discount** on your Custom Bundle Package. This includes our [Practice Test Questions](#), [Online Course Tutorials](#), [Study Guides](#), [Lab Scenarios](#) and our [Certified Online Instructor](#) service.*

*Please visit: <http://www.pass-guaranteed.com/custom-request.htm> If you would like to purchase a Custom Bundle from Pass-Guaranteed.com.*

**QUESTION: 1**

The customer's Centera is using CentraStar 3.0. A third-party vendor implemented an application and requested that a virtual pool and profile be created on the Centera. The application fails in its attempt to write to the Centera.

What is a possible problem?

- A. CE+ is enabled so no data can be written to the Centera
- B. PEA file was never provided to the application
- C. Replication wasn't turned on
- D. Storage pool creation not completed

**Answer: B**

**QUESTION: 2**

What is the maximum number of nodes in a Gen 4 Centera Cube?

- A. 4
- B. 8
- C. 16
- D. 32

**Answer: C**

**QUESTION: 3**

Clips need to be migrated from the default pool to a virtual pool. An access profile has already been created. Sequence the following steps to migrate clips:

- 1) Grant the profile access to the pool
- 2) Create application virtual pool
- 3) Start migrating poolmappings
- 4) Set the home pool for the access profile
- 5) Create poolmapping

- A. 2, 4, 1, 5, 3
- B. 2, 5, 4, 1, 3
- C. 2, 1, 4, 5, 3
- D. 2, 1, 5, 4, 3

**Answer: A**

**QUESTION: 4**

What is an "unbundled" cluster?

- A. Flexible solution where the customer chooses any configuration of hardware or software to deploy
- B. Hardware only solution where the software is provided by the customer
- C. Software only solution where the hardware is provided by the customer

D. Solution where the customer provides the rack in which the cluster is installed

**Answer: D**

**QUESTION: 5**

What does SDK Failover enable with the default setting?

- A. If a C-Clip cannot be found on the primary cluster, then the request goes to the secondary cluster
- B. If the communication is interrupted to the primary Centera, all data is rewritten to the secondary Centera
- C. If the pool has reached its defined quota then data is written automatically to the default pool
- D. In case of a disk failure, data is written automatically to a node connected to the other power rail

**Answer: A**

**QUESTION: 6**

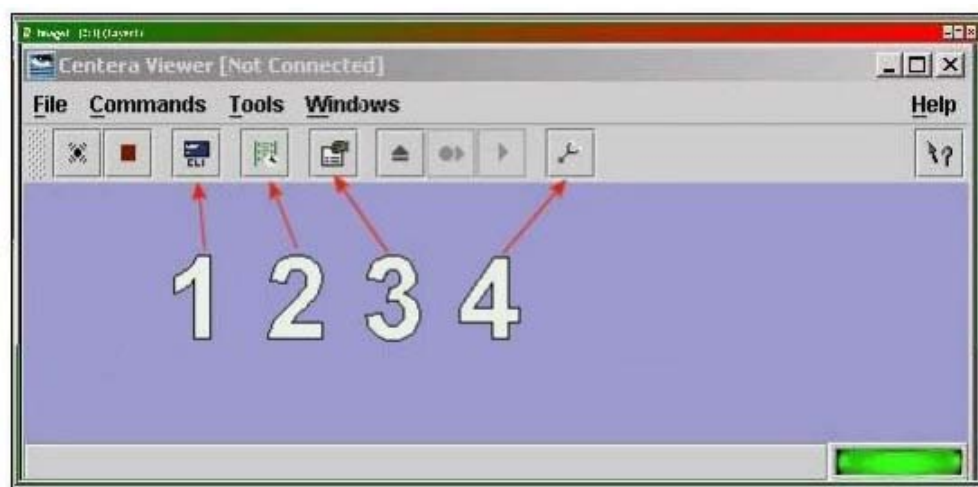
How do you launch the CUA Monitor?

- A. Connect Monitor and keyboard directly to the CUA node and launch web services
- B. Start a http session to the IP-address of the CUA using port 16000
- C. Start a https session to the IP-address of the CUA using port 7227
- D. Starting a SSH session to the IP address of the CUA and use the function "M" in the menu

**Answer: C**

**QUESTION: 7**

Exhibit



Which button, in the diagram, is used to start the CLI from within Centera viewer?

- A. 1
- B. 2
- C. 3

D. 4

**Answer: A**

**QUESTION: 8**

What are the available Centera replication topologies in addition to Uni-Directional and Bi-Directional?

- A. Chain and Inward Star
- B. Multipoint to Point and Chain
- C. Point to Multipoint and Link
- D. Ring and Star

**Answer: A**

**QUESTION: 9**

A new customer has been testing their Centera in Governance mode. They have specified retention periods ranging from 0 days to 7 years. They would now like to erase the cluster and put it into production.

How can the customer remove the test data from the cluster?

- A. Customer can issue a reset cluster command from the CLI
- B. Customer can switch the cluster off for 24 hours to delete all data
- C. Customer can use the privileged delete command to remove the data
- D. Cannot be done, data remains on the cluster

**Answer: C**

**QUESTION: 10**

With which enterprise backup solutions does CASbar work?

- A. NDMP compatible systems
- B. NDMP systems with DMA capabilities
- C. Systems capable of mounting a UNIX file system
- D. Systems capable of mounting a windows file system

**Answer: D**

**QUESTION: 11**

How can an application get authenticated by the Centera?

- A. Application sends the PAI-file encrypted to Centera as part of the connection process
- B. Connect string contains IP-Address of one or more access nodes, and a valid pair of name and secret
- C. Send IP address of all access nodes and correct subnet mask as part of the connect string
- D. System administrator has to set an environment variable, which points to the location of the PAI-module

**Answer: B**

**QUESTION: 12**

By default, how many different file sizes does Centera Verify use to perform tests?

- A. 1
- B. 2
- C. 3
- D. 4

**Answer: C**

**QUESTION: 13**

What is the primary benefit of the GM naming scheme?

- A. Combination of the MD5 plus SHA-256 hash algorithms
- B. Containerizes small files for increased performance
- C. Faster for both ingest and cluster operations
- D. Single Instance Storage

**Answer: C**

**QUESTION: 14**

Which management role is required for the profile to be used by Centera Console?

- A. Accesscontrol role
- B. Audit role
- C. Monitor role
- D. Replication role

**Answer: C**

**QUESTION: 15**

What is the function of garbage collection?

- A. Delete all CDFs with elapsed retention periods
- B. Delete all reflections which do not contain pointers to blobs
- C. Delete blobs that have no associated CDF
- D. Delete virtual pools which do not contain data

**Answer: C**

**QUESTION: 16**

Which item is responsible for granting capabilities?

- A. Access profile
- B. ACL's
- C. CentraStar Mode (Basic, Governance or CE+)

D. Cluster profile

**Answer: B**

**QUESTION: 17**

Which tool is used to create domains for use with Centera Console?

- A. Centera CLI
- B. Centera Console CLI
- C. Centera Viewer
- D. PDM

**Answer: A**

**QUESTION: 18**

Which naming scheme facilitates single instance storage?

- A. CPM
- B. GM
- C. M++
- D. SSPF

**Answer: C**

**QUESTION: 19**

What remains after an object is deleted from Centera by an application?

- A. Copy of the CDF
- B. Copy of the object
- C. Nothing will remain
- D. Reflection

**Answer: D**

**QUESTION: 20**

What is an example of the command to turn CPP on when the license has been entered?

- A. set content protection parity on
- B. set protection CPP
- C. set protection mode CPP
- D. set protection write parity 250k

**Answer: D**