



PASS-GUARANTEED.COM

100% Money Back Guarantee!!!

Your #1 Certification Training Resource

Product Details from Pass-Guaranteed.com:

Network Managment- Smarts Adminstration

E22-250

Demo Version

Download Full Version
Visit

<http://www.Pass-Guaranteed.com>

Complete Certification Training Solutions



Study Tips

This product will provide you with questions and answers carefully compiled and written by our Expert Senior Certified Staff. Our practice questions are designed to help you learn the concepts behind the questions rather than be a strict memorization tool.

Important Note:

Please Read Carefully

Repeated readings of our Pass-Guaranteed.com Practice Exam will increase your comprehension. We constantly add to and update our Practice Exams with new questions, answers and explanations, so check that you have the latest version of this Practice Exam before you take your exam.

For security purposes, each PDF file is encrypted with a unique serial number associated With your Pass-Guaranteed.com account information. In accordance with International Copyright Law, Pass-Guaranteed.com reserves the right to take legal action against you should we find copies of this PDF file distributed to other parties.

Update Notifications (Latest Version)

We are constantly reviewing our products. New material is added and old material is revised. Free Updates are available for 180 days after purchase. If you purchased a bundle, you will have Free Updates for 1 YEAR!

You can signup to our newsletter for instant notification whenever an update is released by becoming a Pass-Guaranteed.com member at: <http://www.pass-guaranteed.com/log.htm>

By becoming a Pass-Guaranteed.com member, you also get a chance to win a FREE Practice Exam of your choosing. We give away 3 Pass-Guaranteed.com Practice Exams every week to 3 lucky winners.

Pass-Guaranteed.com Product Specials

Pass-Guaranteed.com Custom Bundle Requests, cover all Pass-Guaranteed.com Products!!! You can visit our Special Bundle Discounts from Pass-Guaranteed.com or make your own Custom Bundle Request with Pass-Guaranteed.com here: <http://www.pass-guaranteed.com/bundles.htm>

Pass-Guaranteed.com Custom Bundle Request Form let's you create your own Bundle Of Products!!! You can select and group any of our products for your Custom Bundle and we will give you up to a **50% Discount** on your Custom Bundle Package. This includes our [Practice Test Questions](#), [Online Course Tutorials](#), [Study Guides](#), [Lab Scenarios](#) and our [Certified Online Instructor](#) service.

Please visit: <http://www.pass-guaranteed.com/custom-request.htm> If you would like to purchase a Custom Bundle from Pass-Guaranteed.com.

QUESTION: 1

A switch appears down in Service Assurance Manager. After trying to troubleshoot the problem, an operator finds out that the switch has been removed from service.

Why didn't this switch automatically become Unmanaged in Smarts?

- A. IP Availability Manager needs to be restarted to remove this switch.
- B. Other devices that were connected to this switch are still reachable by Smarts.
- C. This switch requires rediscovery.
- D. Unmanaging devices is a manual process.

Answer: D

QUESTION: 2

Which relationship exists between a card and its ports?

- A. ConnectedVia/ConnectedTo
- B. PackagedIn/Packages
- C. Realizes/RealizedBy
- D. Underlying/LayeredOver

Answer: C

QUESTION: 3

Exhibit

The image shows three configuration sliders from a network management interface. The first slider, 'PollingInterval', is set to 900 seconds. The second slider, 'Retries', is set to 3. The third slider, 'Timeout', is set to 700 milliseconds. Each slider has a green arrow indicating the current value and a text box below it showing the numerical value.

Parameter	Description	Value
PollingInterval	The polling interval, in seconds.	900
Retries	The number of times to retry a failed poll request.	3
Timeout	The value, in milliseconds, for a poll request to time out.	700

A router monitored by these polling settings has just been polled, and the operational status of Interface A is DOWN. Ten seconds after the initial poll, the interface operational status changes to UP.

How long will it take from the last poll for the IP Domain Manager to set this interface's status to UP?

- A. 15 minutes
- B. 700 milliseconds
- C. 9 seconds
- D. 900 minutes

Answer: A

QUESTION: 4

Which relationship exists between a card and its ports?

- A. ConnectedTo/ConnectedVia
- B. HostsAccessPoints/HostedBy
- C. MemberSystems/MemberOf

D. Realizes/RealizedBy

Answer: D

QUESTION: 5

Which information is needed by IP Availability Manager to communicate with an EMC Celerra NAS in addition to its IP address?

- A. Control Station port number
- B. Data Mover port number
- C. Port number
- D. Username, password

Answer: D

QUESTION: 6

Oper1, a user, would like to share a saved map with other users.

What does the admin need to do?

- A. Copy the saved map to \smarts\local\conf\console folder on the Global Manager
- B. Copy the saved map to \smarts\local\conf\consoles folder on the Global Manager
- C. Copy the saved map to \smarts\local\console folder on the Global Manager
- D. Copy the saved map to \smarts\local\consoles folder on the Global Manager

Answer: D

QUESTION: 7

Which Performance Monitor Setting will give early warning that an interface is too busy?

- A. IPThreshold
- B. Restart Trap Window
- C. UnicastThreshold
- D. UtilizationThreshold

Answer: D

QUESTION: 8

The EMEA NOC, America NOC, and Asia NOC each has visibility to regional NOCs. Each regional NOC implements one or more Smarts applications and uses its own Smarts Service Assurance Manager to provide an end-to-end view of the region.

What needs to be configured to architect EMC Smarts solutions to view all regions?

- A. Hierarchical SAM configuration
- B. Smarts Aggregation Adapter
- C. Smarts Topology Split Manager

D. Standard SAM configuration

Answer: A

QUESTION: 9

What does the context filter determine when defining a tool?

- A. If the tool is grayed out
- B. If the tool is visible
- C. The acceptable state for tool use
- D. Which attributes are passed

Answer: B

QUESTION: 10

A new Windows 2003 Enterprise Server from Vendor XYZ needs to be discovered. The Smarts admin created an entry for this server in oid2type_Field.conf. .1.3.6.1.4.1.9999.1.12 { TYPE = Switch VENDOR = XYZ MODEL = Widget5550 CERTIFICATION = TEMPLATE INSTRUMENTATION: Interface-Fault = MIB2 Interface-Performance = MIB2 }

After discovering this new server, which class will it be part of?

- A. Host
- B. It will not be added to the topology
- C. Node
- D. Switch

Answer: D

QUESTION: 11

Which relationship of a switch is expanded to view the instances of its ports, in the Topology Browser?

- A. ComposedOf
- B. HostConnectionPoints
- C. Overlaying
- D. PartOf

Answer: A

QUESTION: 12

There is a firewall between the servers on which the Domain Managers are running. You are troubleshooting a connectivity issue with the Smarts deployment.

Which command is used to verify the TCP ports on which the Domain Managers are listening?

- A. brcontrol
- B. sm_ping

- C. sm_service show
- D. sm_what

Answer: A

QUESTION: 13

Which sm_server parameters are required when starting a Service Assurance Manager?

- A. --name and --config
- B. --name and --port
- C. --server and --config
- D. --server and --port

Answer: A

QUESTION: 14

An organization is looking for a way to effectively scale in an intricate heterogeneous IT environment.

Which part of the Smarts A3 architecture will minimize the manual effort to accomplish this goal?

- A. Automation
- B. Abstraction
- C. Analytics
- D. Analysis

Answer: B

QUESTION: 15

Which command can be used in a script that will stop the Service Assurance Manager SMARTS-SA?

- A. dmquit -s SMARTS-SA --force
- B. dmquit -n SMARTS-SA --norestore
- C. sm_quit -n SMARTS-SA --norestore
- D. sm_quit -s SMARTS-SA --ignore

Answer: A

QUESTION: 16

At a customer site, many different networks are being managed by a single IP domain, which is generating many DuplicateIP alerts in SAM.

How can you avoid these DuplicateIP alerts?

- A. Filter the Duplicate network
- B. Use a different IP-AM for each network
- C. Use a different SAM for each network
- D. Use IP Tagging

Answer: D

QUESTION: 17

To ensure that Discovery probes every IP address on a Class B IP network you set the Discovery filter to 10.1.*.*. However, you see that most devices in that range have not been discovered.

Why?

- A. MaximumHostBits parameter in discovery.conf is set to 8 by default.
- B. Some of those IP addresses do not exist.
- C. The systems have been throttled and placed on the Pending Device List.
- D. You have run out of licenses.

Answer: A

QUESTION: 18

A root-cause problem is presented that states one of a router interfaces is down.

What is the underlying issue?

- A. Router interface is administratively down and operationally down.
- B. Router interface is administratively up and operationally down.
- C. Router is completely down.
- D. SNMP Agent on that router is not responding.

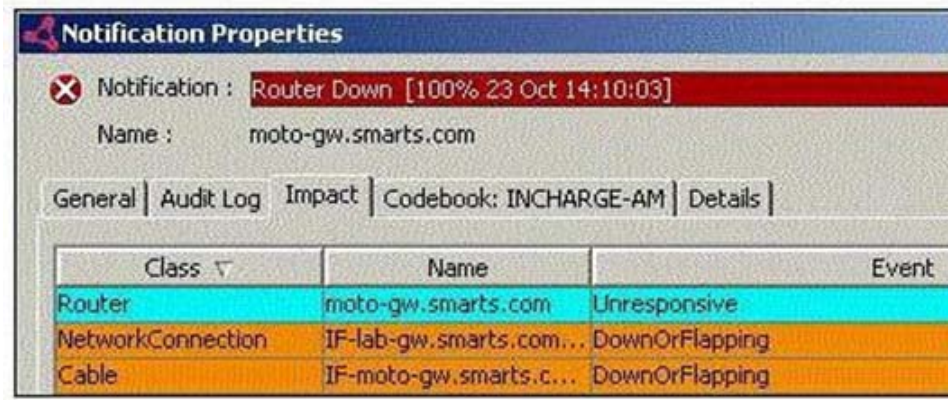
Answer: B

QUESTION: 19

Exhibit

ClassWeight	1
UnitaryComputerSystem	100
ClassWeight Router	1000
InstanceWeight Host *smarts.com*	1000
InstanceWeight Router *moto*	1000
InstanceWeight Router *gw*	10000

The current weights.conf file contains: ClassWeight ICIM_ManagedElement 1



Which impact value would be calculated for this Router Down problem?

- A.102
- B.1000
- C.1002
- D.10002

Answer: C

QUESTION: 20

A customer's environment has many different networks that are being managed by Smarts. As a result of this there are many DuplicateIP notifications.

What is an effect on Smarts of having DuplicateIP notifications?

- A. Each duplicated IP object is unmanaged.
- B. IP Domain Manager polls twice as often.
- C. Network connections will not be represented correctly.
- D. Root-cause analysis of other events will be correlated to these Duplicate IPs.

Answer: A