



Logic Software Inc.
E-mail: info@logicsoftware.net
URL: <http://www.logicsoftware.net>

Easy Projects .NET Installation Guide Version 5.2

The automatic Easy Projects .NET installer is used for both 30-Day Trial and Upgrades from the versions 4.x and 5.x.

System Requirements

Before proceeding with Easy Projects .NET installation, please make sure you have the following prerequisites installed:

OS: Windows 2000, Windows XP Pro, Windows 2003, Vista Ultimate/Business, Windows 2008.

Internet Information Services (IIS)

Installation instructions:

<http://support.myeasyprojects.net/KB/a39/i-run-setup-it-tells-me-i-need-iis-50-what-is-that.aspx?KBSearchID=0>

.NET Framework 2.0

Installation instructions:

<http://www.microsoft.com/downloads/details.aspx?familyid=0856EACB-4362-4B0D-8EDD-AAB15C5E04F5&displaylang=en>

MS SQL Server 2000, MSDE 2000, MS SQL 2005 or MS SQL Express 2005

MS SQL Server Express 2005 Download link:

<http://go.microsoft.com/fwlink/?LinkId=65212>

MS SQL Server Express 2005 Management Studio (GUI Interface) link:

<http://go.microsoft.com/fwlink/?LinkId=65110>

NOTE:

MS SQL server should be configured to use SQL server (mixed) authentication, remote connections should be allowed, both login for 'sa' user and TCP/IP protocol should be enabled.

License Agreement

Run Easy Projects .NET setup. Carefully read the License Agreement that will appear on the first screen. After accepting Easy Projects .NET license agreement, you will be transferred to the Installation type and Target folder page. Click “Next” on two first setup wizard screens.

Files and database installation

The first step allows you to choose a database installation method. There are three types to choose from as shown in Figure 1:

1. ***Clean install.*** Easy Projects .NET will be installed with empty database which you can fill in on your own.
2. ***Demonstration.*** Easy Projects .NET will be installed with sample data that will help you to get acquainted with the application without spending time on filling in project data.
3. ***Upgrade.*** If you have already an installed version of Easy Projects .NET and want existing data to be saved then choose this method and it will upgrade EP.NET files and database. Select a folder of existing version as the target folder; it will save you a time because all current settings will be taken from the configuration file.

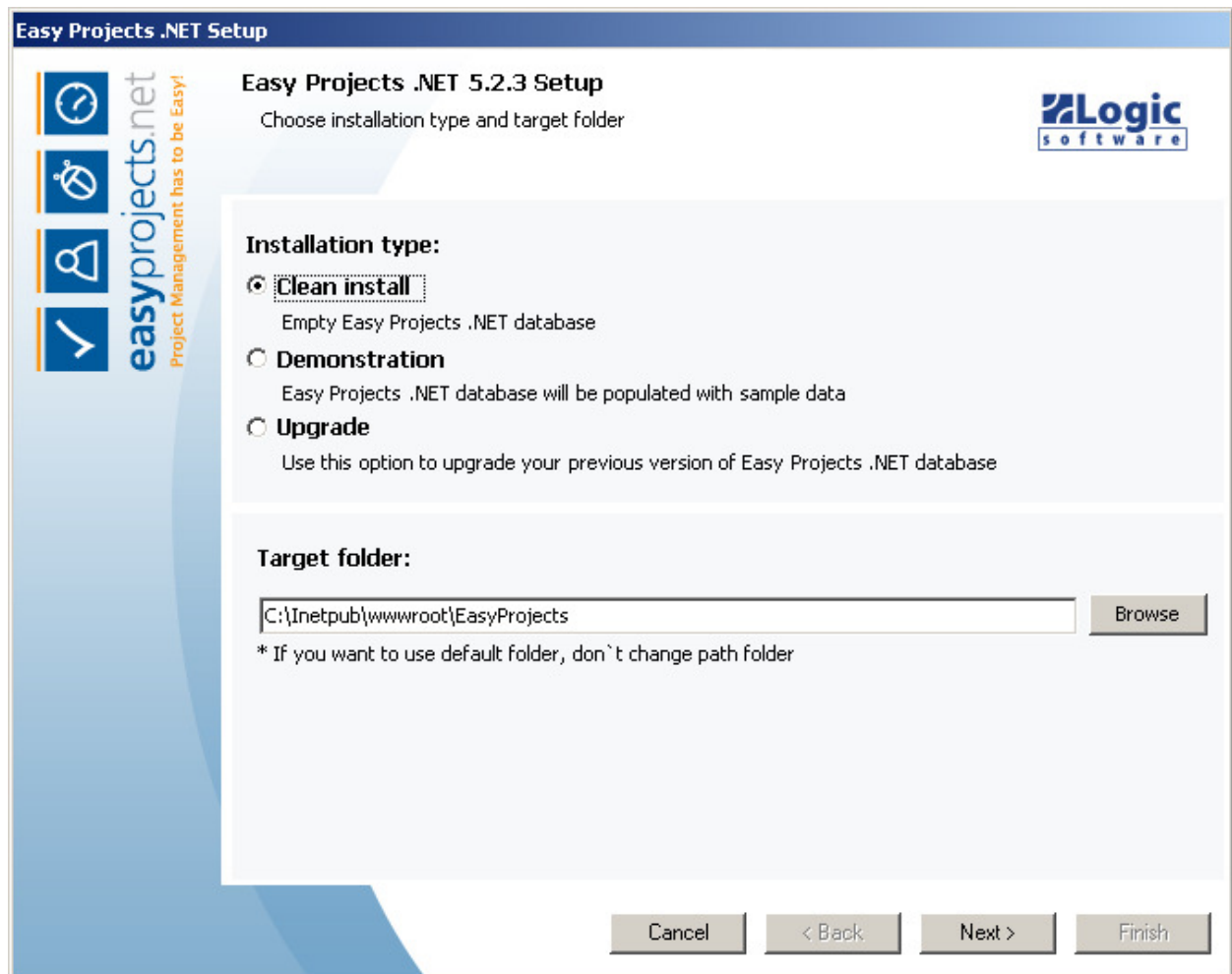


Figure 1: Files and database installation: choose Installation type and Target folder

SQL Server setup

On the second step (Figure 2) there are three options:

1. ***SQL server located on a local server or on a server in a local network.*** Leave this default option selected if you have SQL server installed on a local server or in a local network. Choose a SQL server from the drop-down list and proceed with the installation.
2. ***Automatically download and install MSDE.*** If there are no SQL server instances installed on your server and you want to download and install MSDE (a free version of MS SQL Server 2000) you can select this option. After you click the “Next” button, a wizard will download MSDE from the Microsoft site and install it on the current machine. After that you can proceed with the installation.
3. ***Manually download MSDE.*** Choose this option if you want to manually download and install MSDE on your computer. When you click the “Next” button the installer will close and you will be transferred to the information page on the EP.NET site which has instructions and the download link. After downloading and installing MSDE run the EP.NET installer again to proceed with the installation.

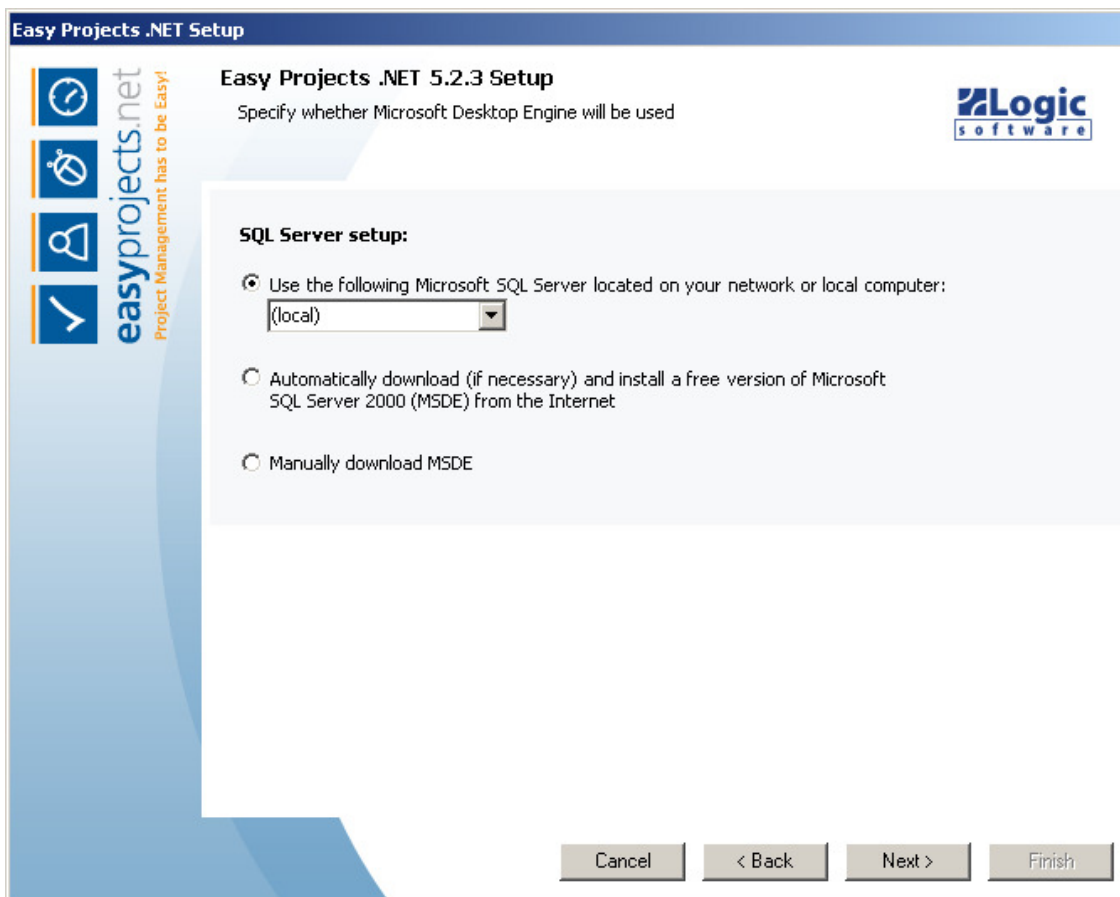


Figure 2: Specify whether MSDE will be used

Data storage options

On the next step (Figure 3) you have to choose a storage method for attachments and a method for session state storage. Attachments storage can be of two types:

1. **Database.** Leave the default “Database” option selected if you want attachments to be stored in a database rather on a hard disk.
2. **Hard disk.** If you decide to store attachments on a disk you should specify a folder on a disk where files will be stored.

By default the “*Use SQL Server session state*” option is enabled. In this case a session will be stored on SQL server. If the option is disabled; a session will be stored on Web server. It’s recommended to leave the option enabled – it will help to avoid session loss errors. However this option will make the system slightly slower.

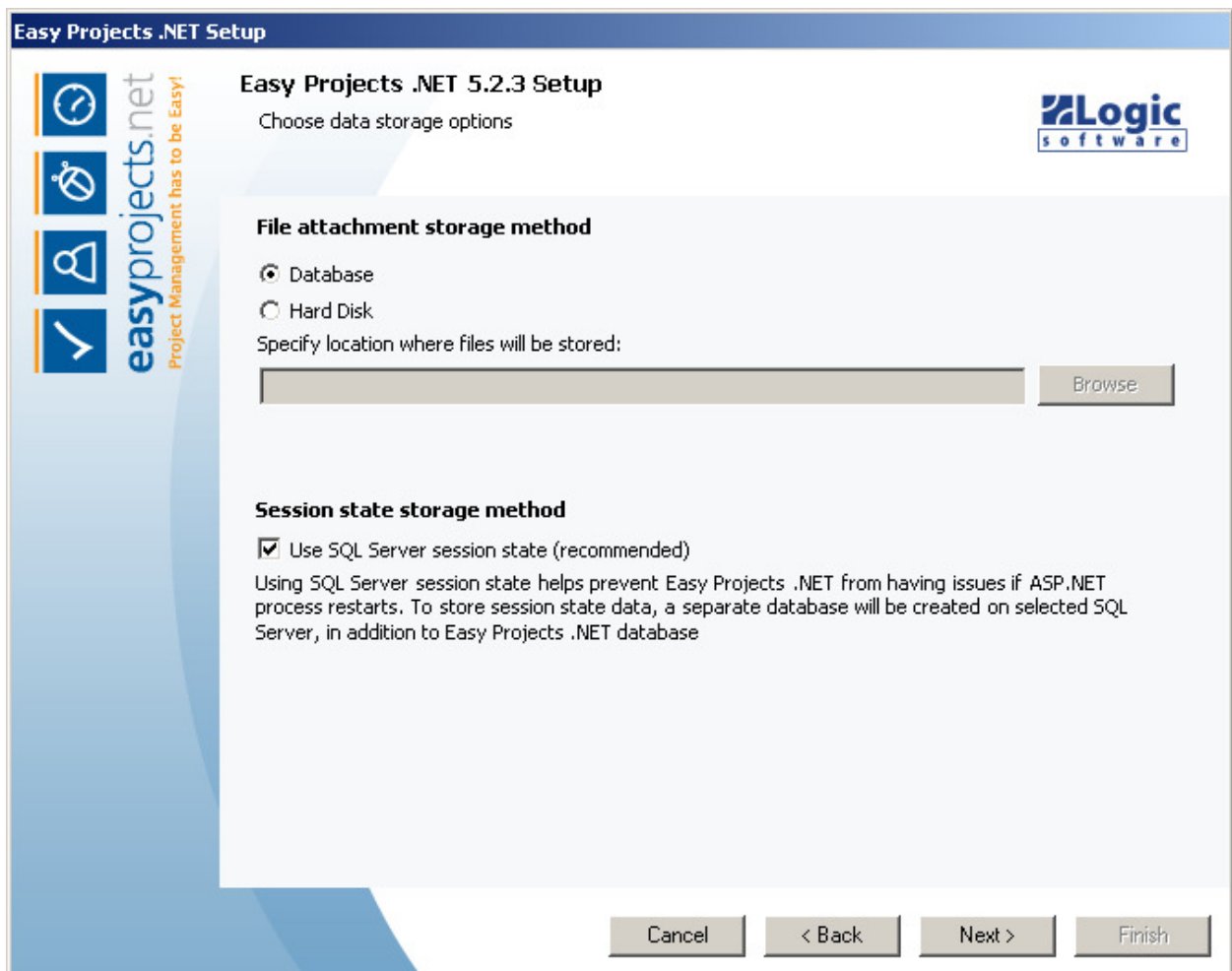


Figure 4: Choose data storage options.

Database installation options

On the next installer screen you input SQL Server information:

SQL server name, **user name** and **password** and **database name** as shown in Figure 5.

On this step you will be able to test the connection to the chosen database using entered parameters and make sure that the data you have entered is correct. This information will be used by Easy Projects.NET for database access.

The screenshot shows the 'Easy Projects .NET Setup' window. The title bar reads 'Easy Projects .NET Setup'. The main heading is 'Easy Projects .NET 5.2.3 Setup' with the subtitle 'Choose your database installation options'. The Logic software logo is in the top right. On the left, there is a vertical sidebar with icons and the text 'easyprojects.net Project Management has to be Easy!'. The main content area is divided into two sections. The first section, 'SQL server options:', contains fields for 'SQL Server:' (a dropdown menu showing '(local)'), 'Database name:' (a text box with 'EasyProjects' and a 'Browse' button), 'User name:' (a text box with 'sa'), and 'Password:' (a text box with '*****'). There is a checkbox labeled 'Use existing Easy Projects .NET database (it will not be modified)' and a 'Test connection' button. The second section, 'Easy Projects .NET Administrator Password', features a small icon of a person in a green cap. It has fields for 'User name' (containing 'Administrator') and 'E-Mail (mandatory)' (containing 'admin@myserver.com'). Below these are two radio buttons: 'Use Default Administrator password' (selected) and 'Use My Own Administrator password'. The 'Use My Own Administrator password' option has two text boxes for 'Password' (containing 'admin') and 'Confirm password'. At the bottom of the window are four buttons: 'Cancel', '< Back', 'Next >', and 'Finish'.

Figure 5: Database Installation: configure

While on this page you can change the Administrator default password to your own with the help of which you will logon to the system.

In Demonstration install you can change the default password **epdemo** to any that suits you. It will be applicable to all users.

Clean install comes only with the Administrator account whose default password **admin** you can change to any that is convenient for you.

If you have chosen Upgrade install then you can logon to the system using the password that you used in your previous version of Easy Projects .NET.

E-Mail field is required. It will be used for notification e-mails.

NOTE:

If you prefer to use a specific SQL server user for EP.NET (not default the 'sa' user), this user should have "db_owner" permission for the EP.NET, ASPState and tempdb databases.

IIS Configuration

The next screen as shown in Figure 6.1 allows you to choose a web-site and create a virtual directory Easy Projects .NET will be configured to run from. Having made this choice under the inscription 'Easy Projects .NET will be installed to the following URL' you will see the URL at which your installed version of Easy Projects .NET will be available. This URL will appear once again on the last screen of the installer.

The URL that will be used in the notifications e-mails field allows you to specify correct URL which all links to objects will have in notifications e-mails. You may change the default **localhost** machine name in the URL to a server name which will be recognized when a link is opened from the outside network.

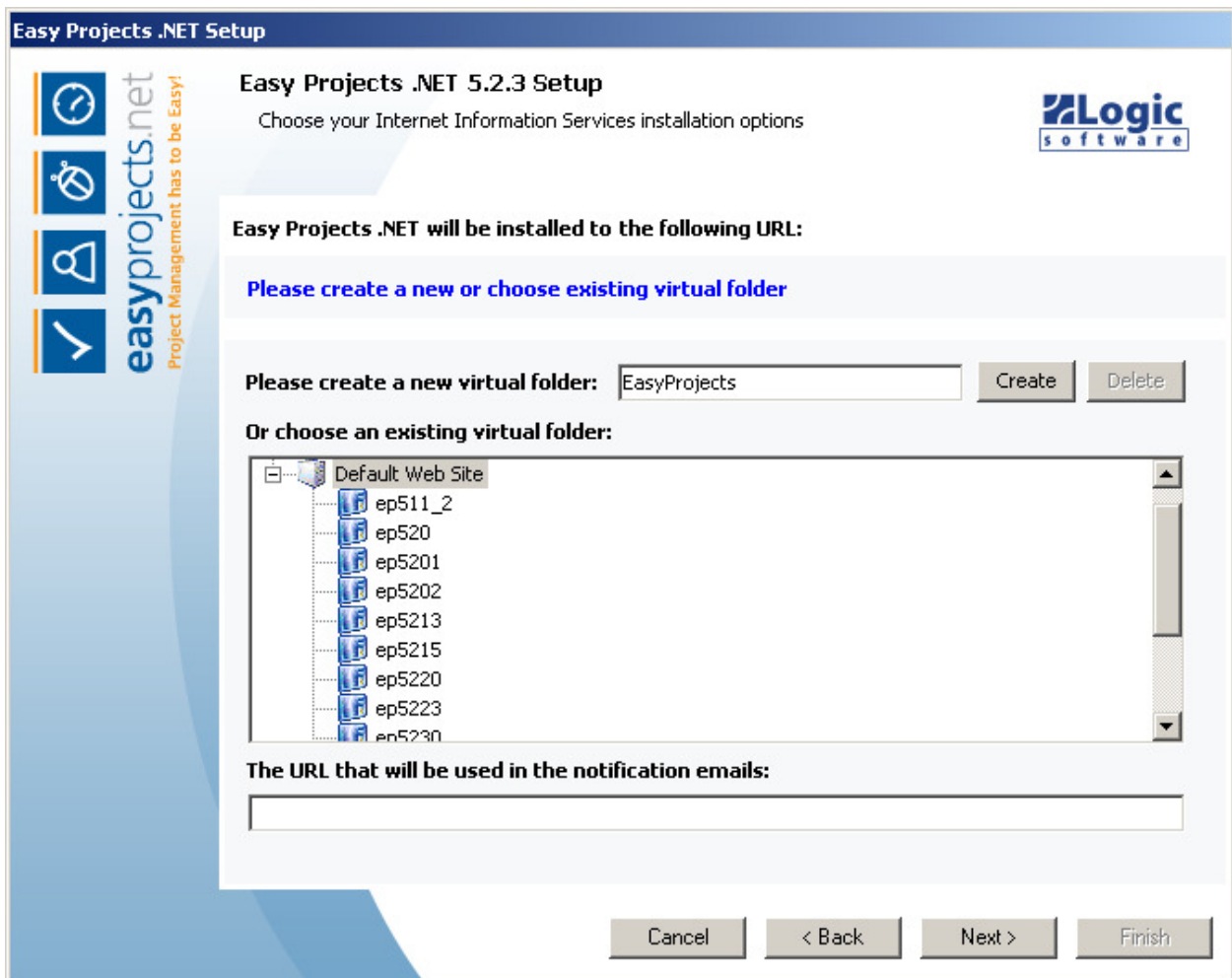


Figure 6: Internet Information Services setup

When you click on “Create” button a new virtual folder “EasyProjects” is created under a selected Web site and the IIS tree will look like as shown in the Figure 7.

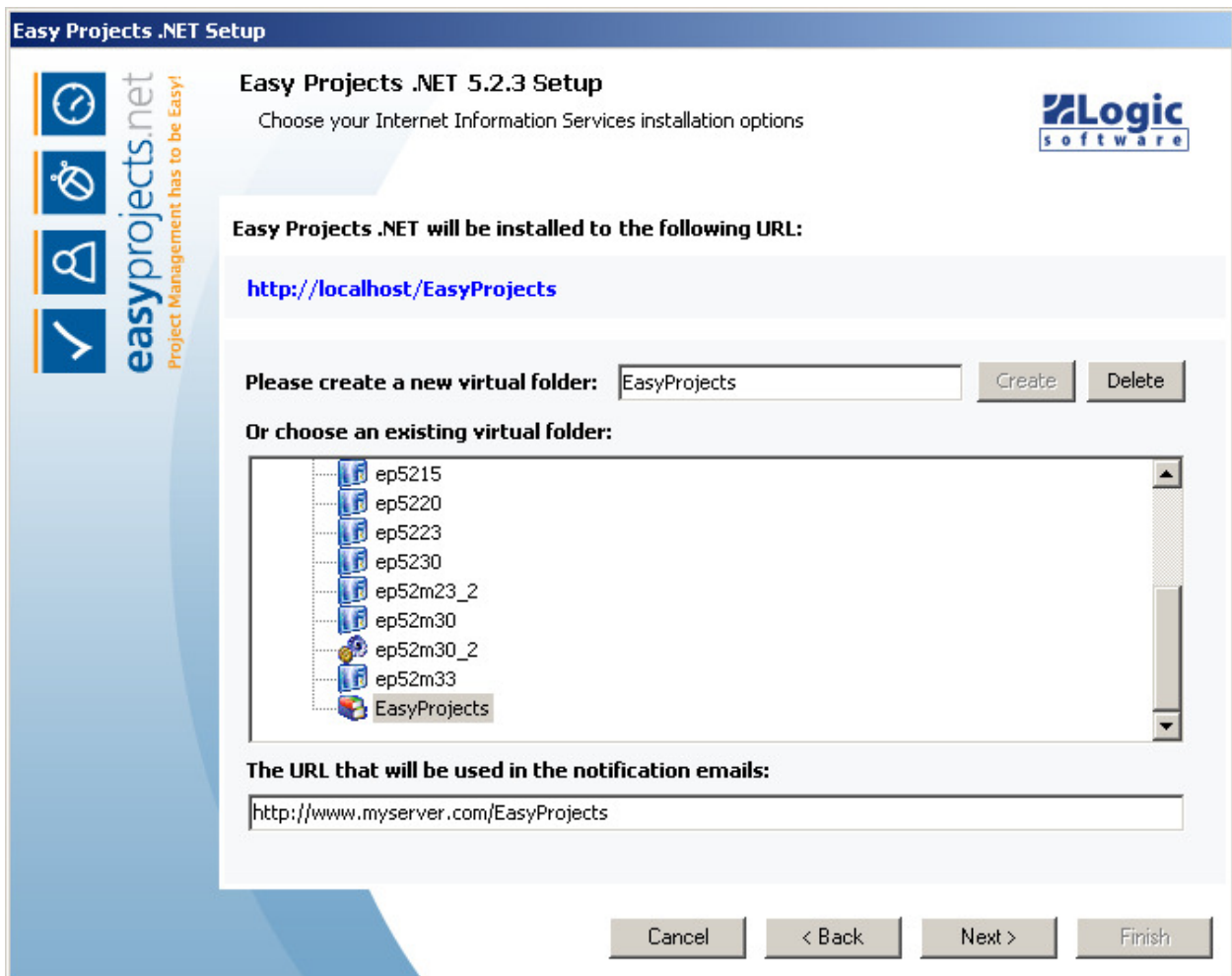


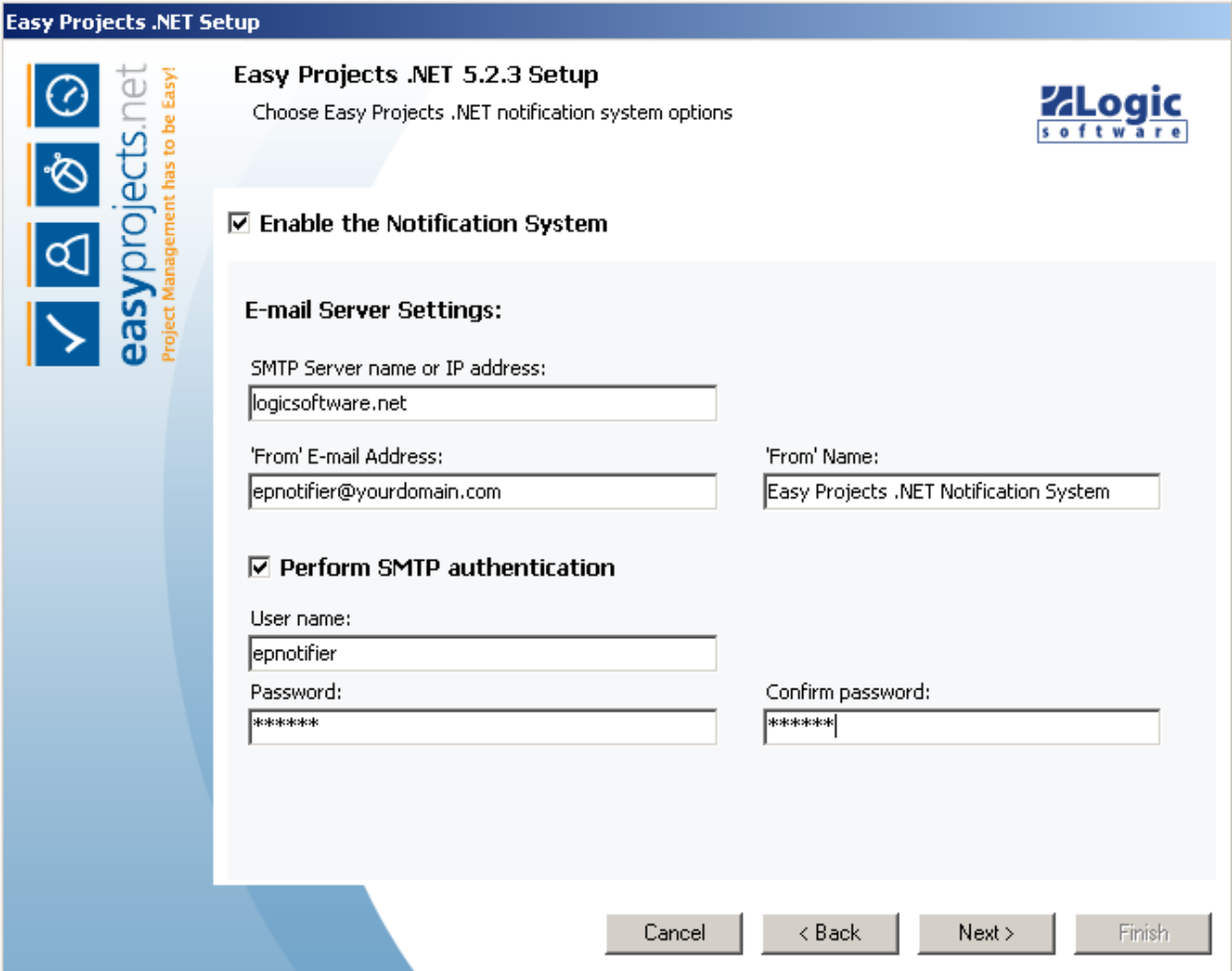
Figure 7: IIS tree with a new virtual folder

Configuring Easy Projects .NET

The next installation screen as shown in Figure 8 provides you with the opportunity to enable Easy Projects .NET E-mail Notification System. You should specify **SMTP Server name or its IP address** and **'From' E-mail Address**. **'From' name** field is optional. These settings will be used by the Notification System for sending e-mail messages.

There are some e-mail servers that require SMTP authentication before performing any operation. In this case you should check the box **'Perform SMTP authentication'** and specify a **User name**, his **Password** and **Confirm the password** values.

If you don't know whether you need to perform SMTP authentication ask your system administrator.



The screenshot shows the 'Easy Projects .NET Setup' window. The title bar reads 'Easy Projects .NET Setup'. The main window has a blue header with the text 'Easy Projects .NET 5.2.3 Setup' and 'Choose Easy Projects .NET notification system options'. On the left, there is a vertical sidebar with the 'easyprojects.net' logo and the text 'Project Management has to be Easy!'. The main content area contains the following options and fields:

- ☒ **Enable the Notification System**
- E-mail Server Settings:**
 - SMTP Server name or IP address:
 - 'From' E-mail Address:
 - 'From' Name:
- ☒ **Perform SMTP authentication**
 - User name:
 - Password:
 - Confirm password:

At the bottom right, there are four buttons: 'Cancel', '< Back', 'Next >', and 'Finish'.

Figure 8: Easy Projects .NET Notification System

Finishing Easy Projects .NET setup

On this step of the installation process you will be able to revise all the settings you have specified during the previous steps. Click Finish button to save them or Back button to make necessary changes as shown in Figure 9.

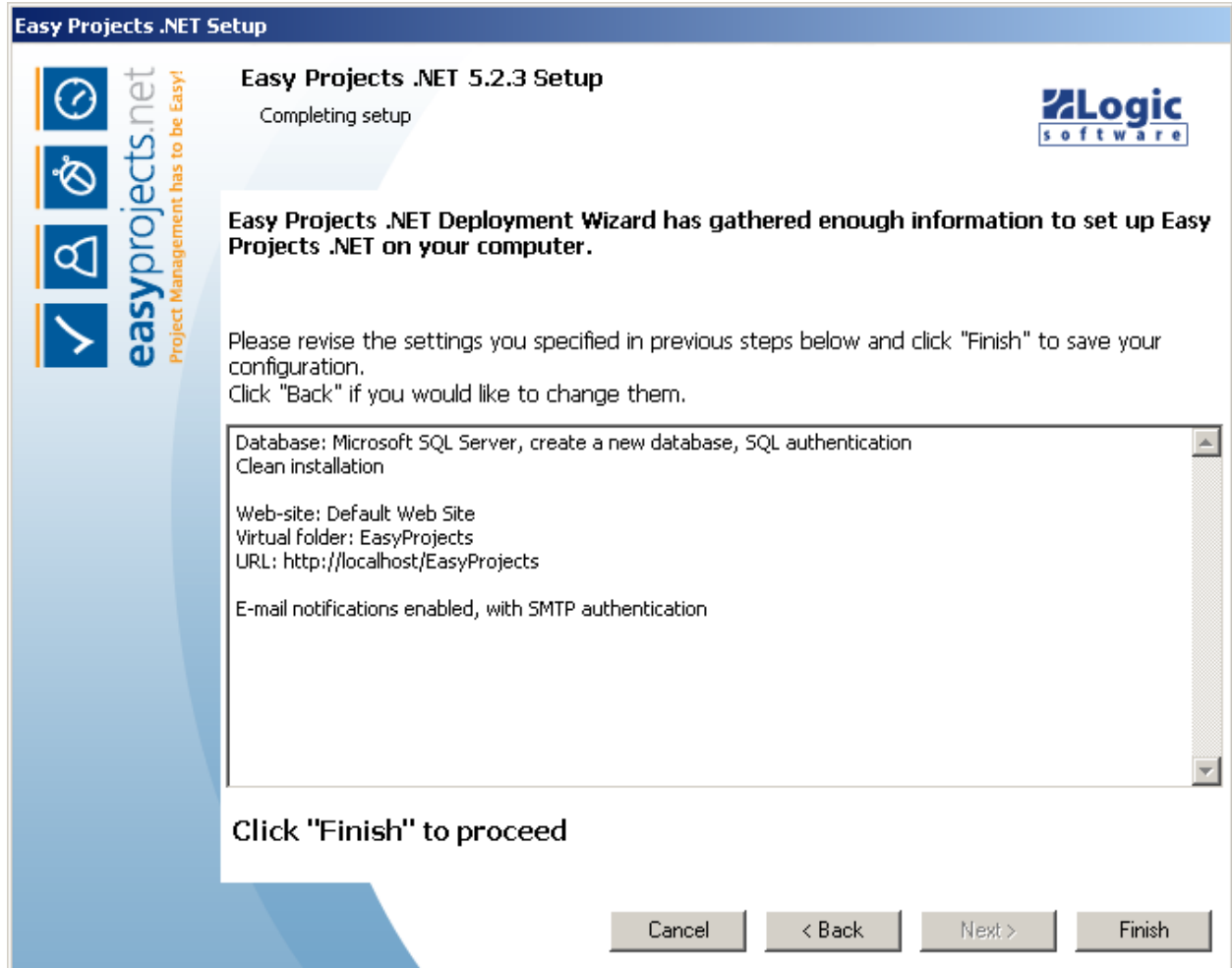


Figure 9: Easy Projects .Net Deployment Wizard

Final Step

Congratulations! You have finished all configuration tasks and the installer will perform all the necessary operations to deploy Easy Projects .NET on the target computer.

On the last screen you will see the URL where you can access your application.

Easy Projects .NET Web site will be available by the address similar to: <http://youraddress.com/EasyProjects>, where *youaddress.com* is a network address of the computer where system was installed and *EasyProjects* is a virtual directory name that you specified during the **IIS Configuration** step.

PLEASE REMEMBER:

By default Easy Projects .NET **Clean Installation** comes with the only Administrator account that should be used to create other users. Please use *Administrator* as a username and *admin* as a password.

Additional Help

For the most current FAQ go to the Easy Projects .NET web site:

<http://www.easyprojects.net/faq.asp>

Easy Projects .NET Knowledgebase is located at:

<http://www.easyprojects.net/KB/>

Easy Projects .NET Forums can be found at:

<http://www.easyprojects.net/Forums/>