

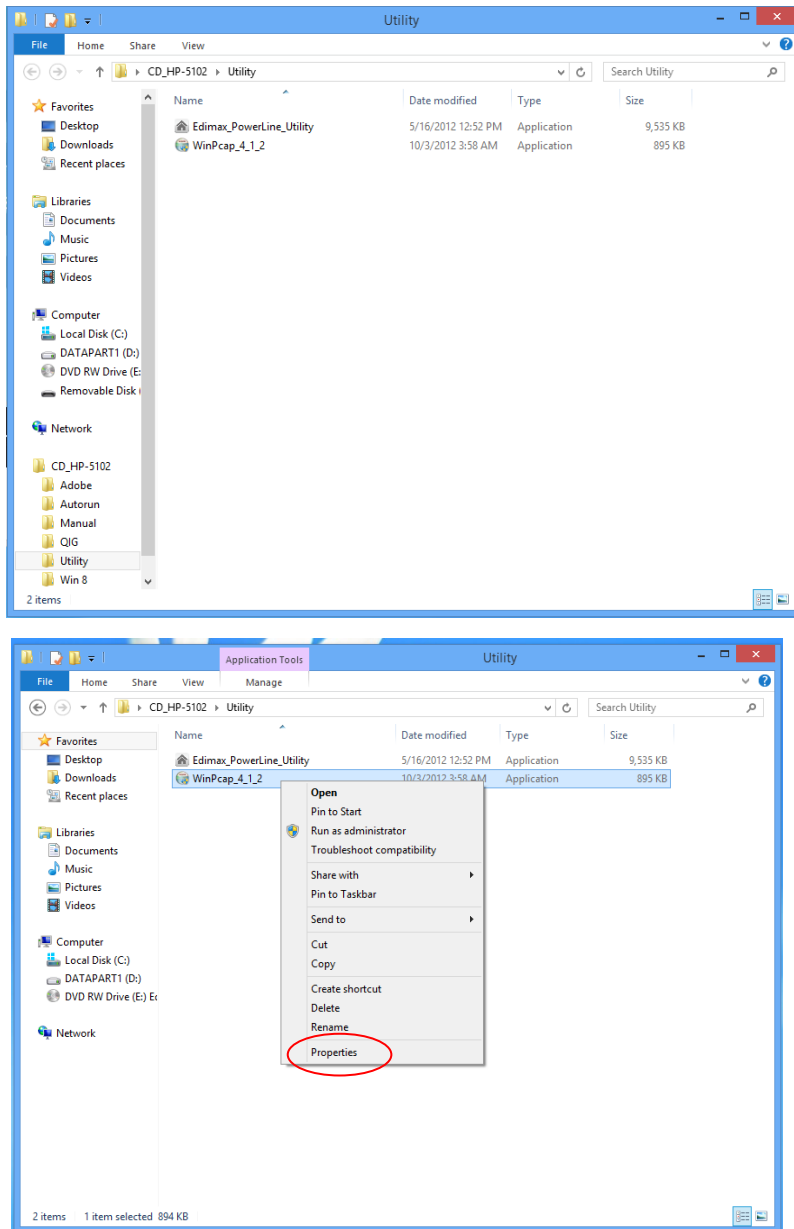
200M & 500M Powerline

Windows 8 Utility Installation Guide

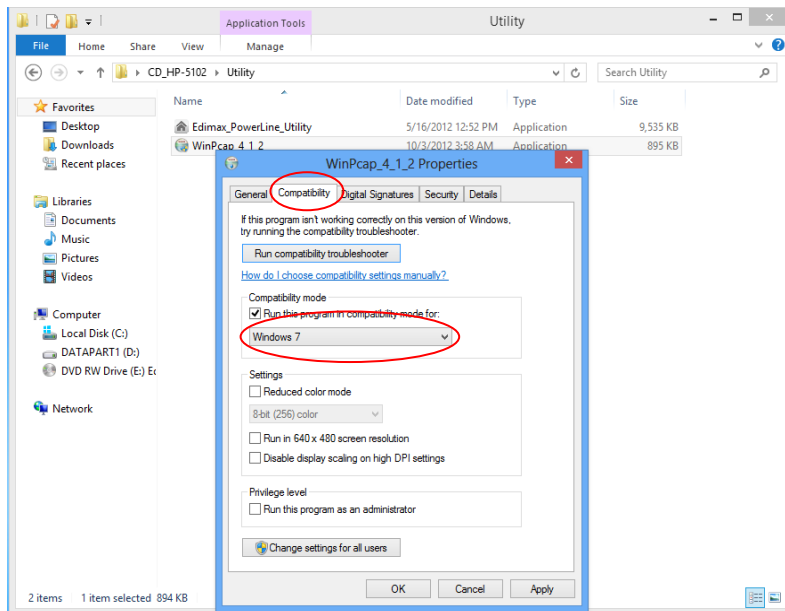
01-2013 / v1.0

Step 1 Before installing the utility software, make sure that no other powerline utility is installed on your computer. If any other utility software is installed, uninstall it and reboot the computer.

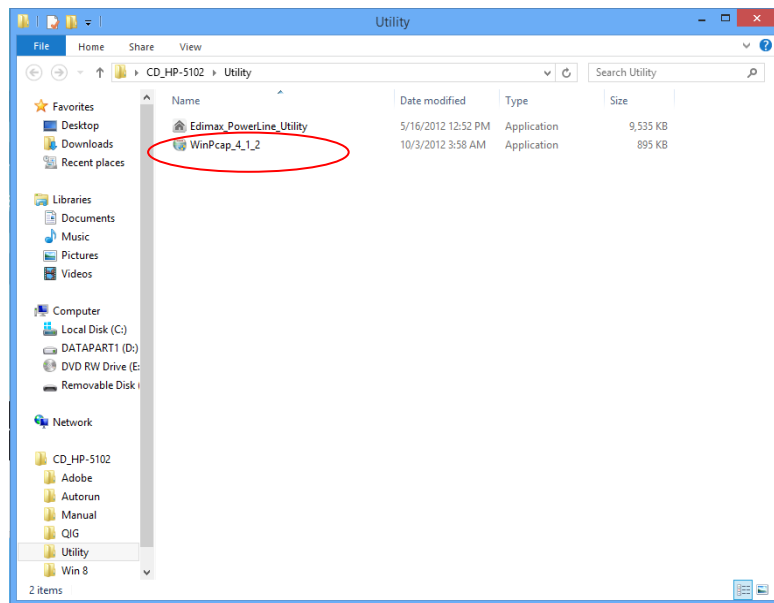
Step 2 Click right button on WinPcap4.1.2 then click “Properties”.



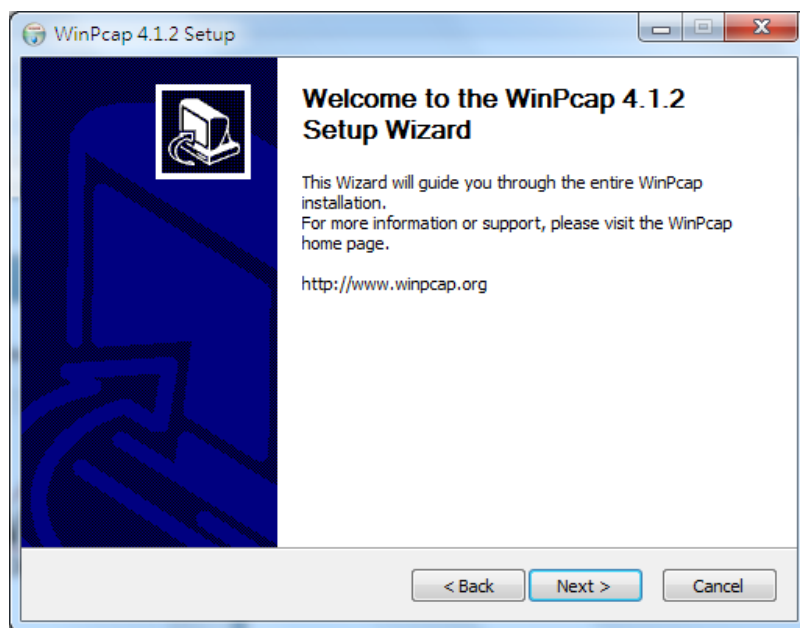
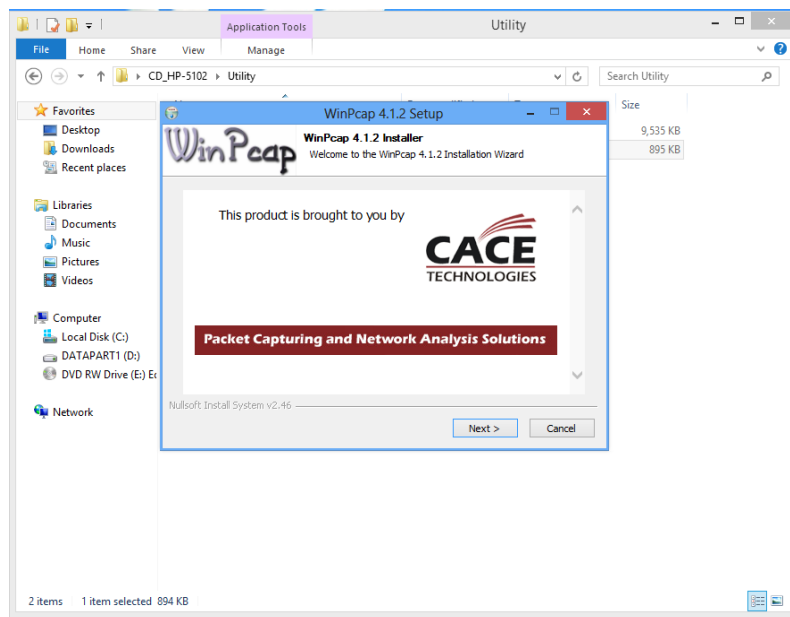
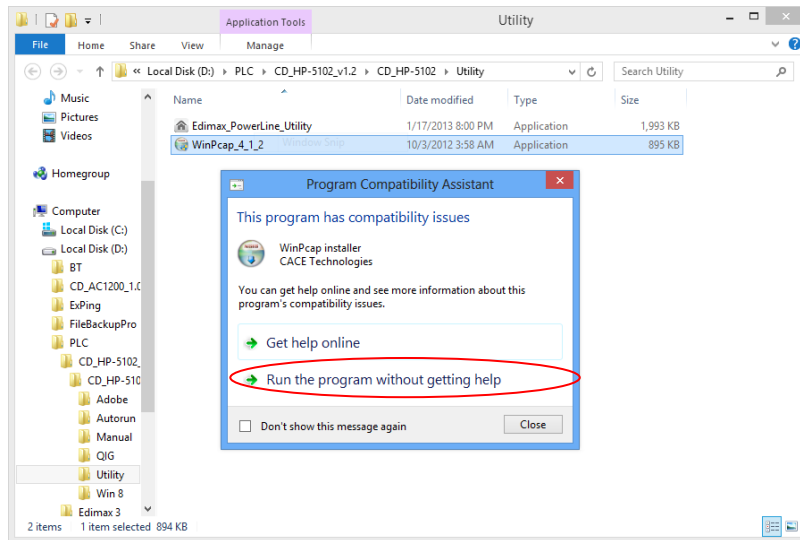
Step 3 Click Compatibility tab and check “Run this program in compatibility mode for:”, then select Windows 7, then click “Apply”.

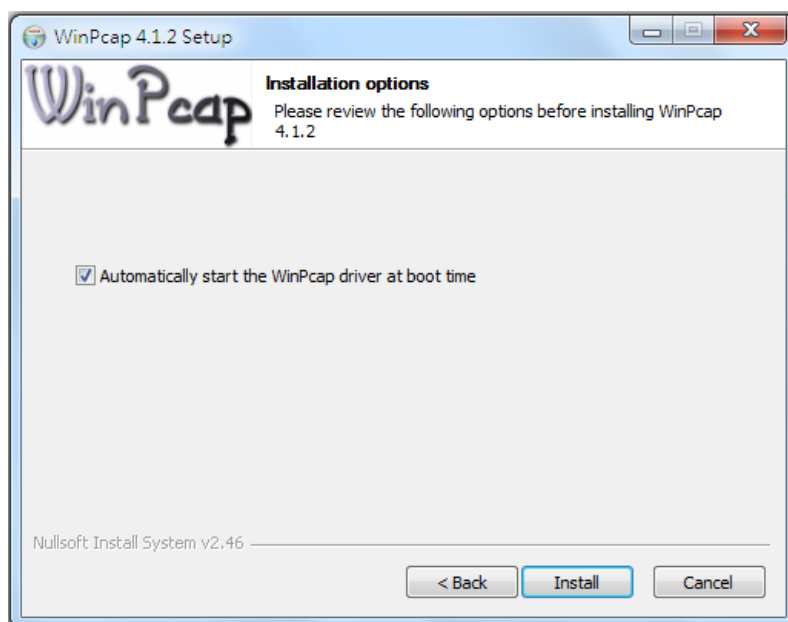
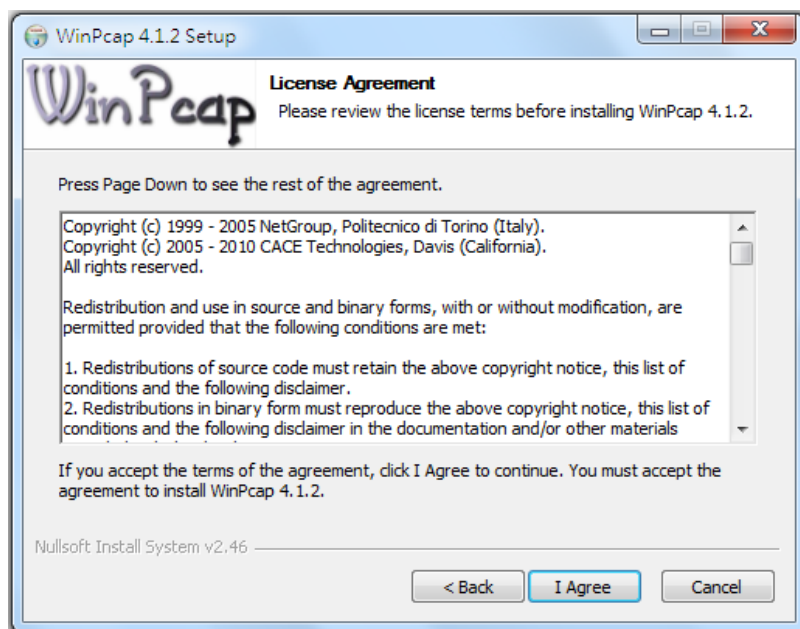


Step 4 Then click “WinPcap_4_1_2”. The wizard will guide you through the setup process.

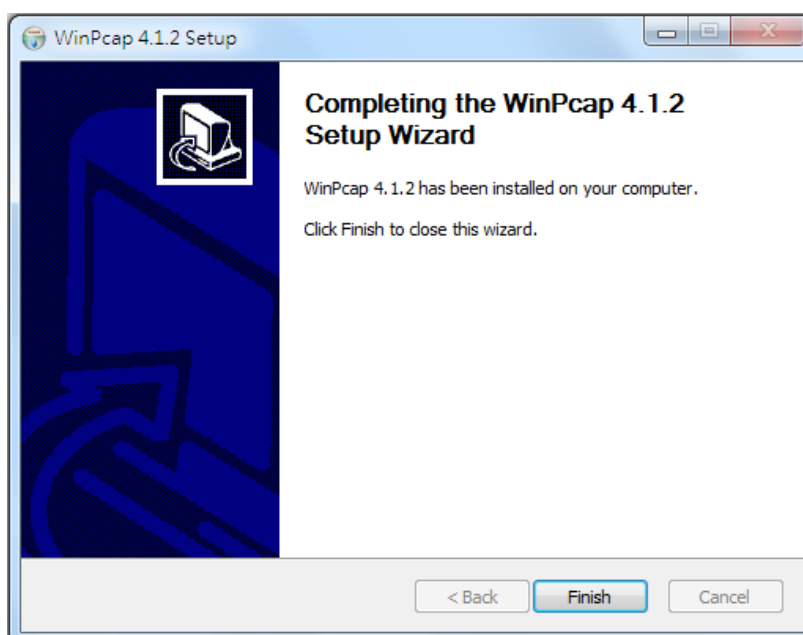


Step 5 When the following WinPcap Compatibility Assistant appears, select Run the program without getting help.

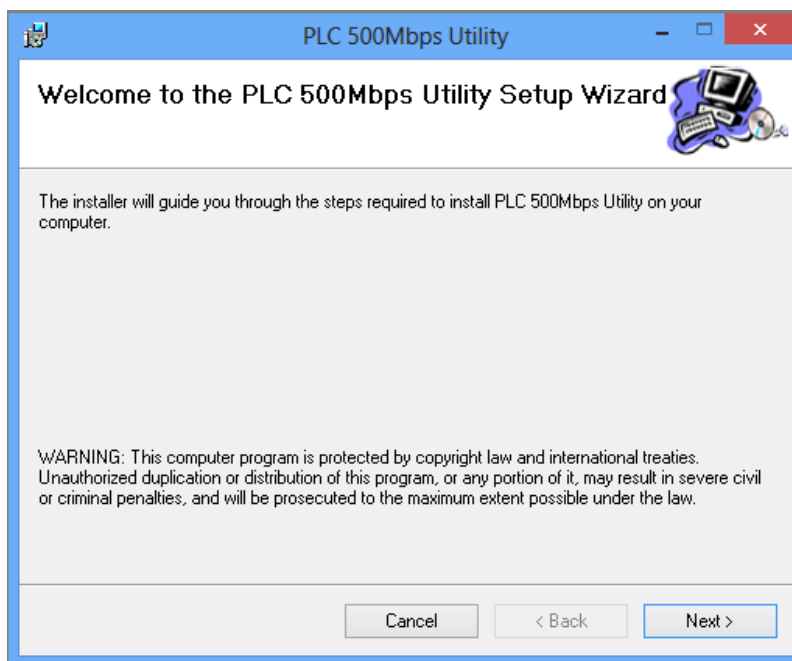
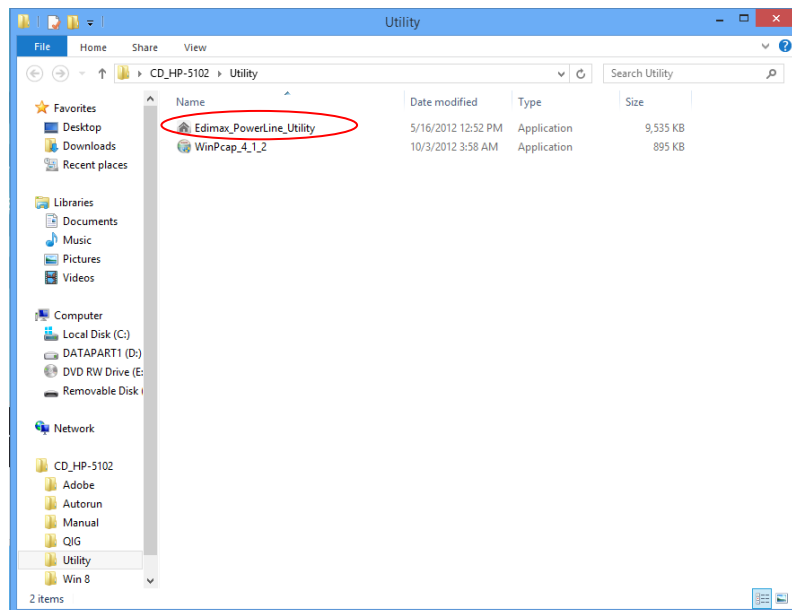




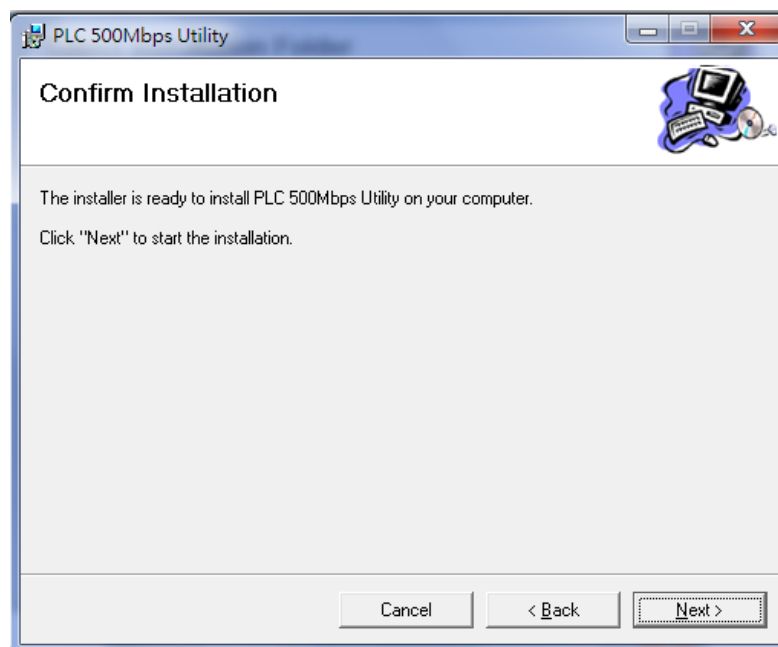
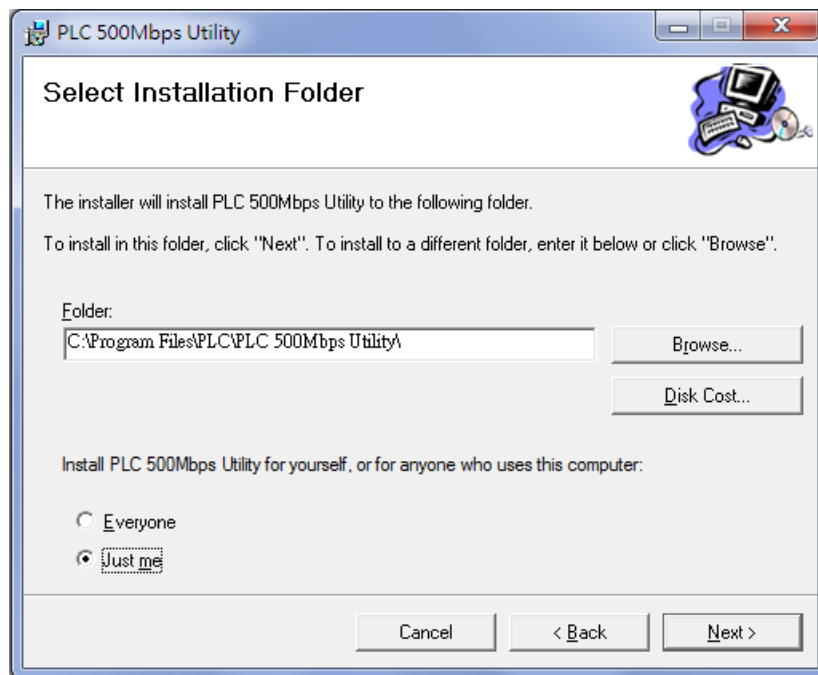
Step 6 After the installation is complete, click “Finish”.



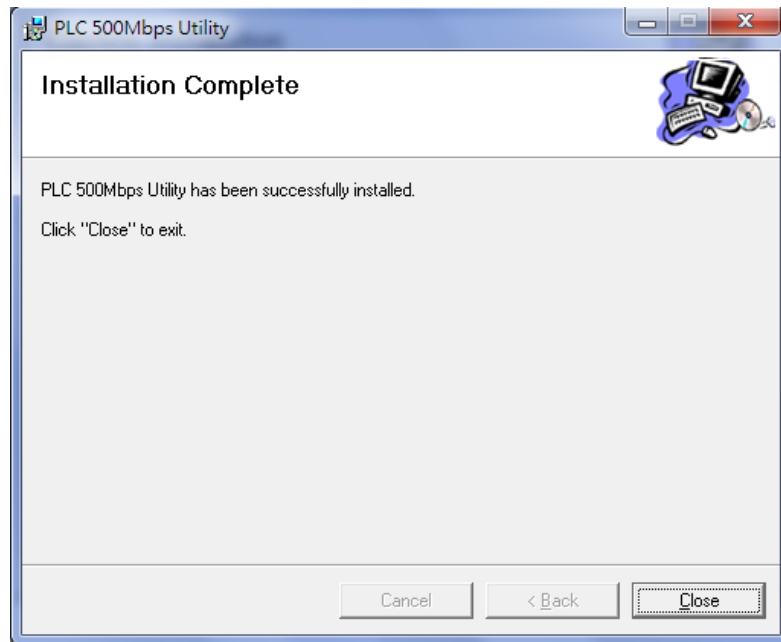
Step 7 Click the “Edimax PowerLine Utility”, the “PLC 500Mbps Utility” appears, click “Next” to continue.



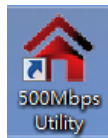
Step 8 Select where you want to install the utility software, and then click “Next”.



Step 9 After the installation is complete, click "Close".



Step 10 An icon will appear on your desktop. Click the icon to open the utility software.



Note: You can manage all the connected powerline adapters with the utility software. However, installing the utility software is optional.



Edimax Technology Co., Ltd.

No.3, Wu-Chuan 3rd Road, Wu-Gu,
New Taipei City 24891, Taiwan

Edimax Technology Europe B.V.

Nijverheidsweg 25 5683 CJ Best
The Netherlands

Edimax Computer Company

3350 Scott Blvd., Bldg.15 Santa Clara,
CA 95054, USA