



EZserver Quick Installation Guide

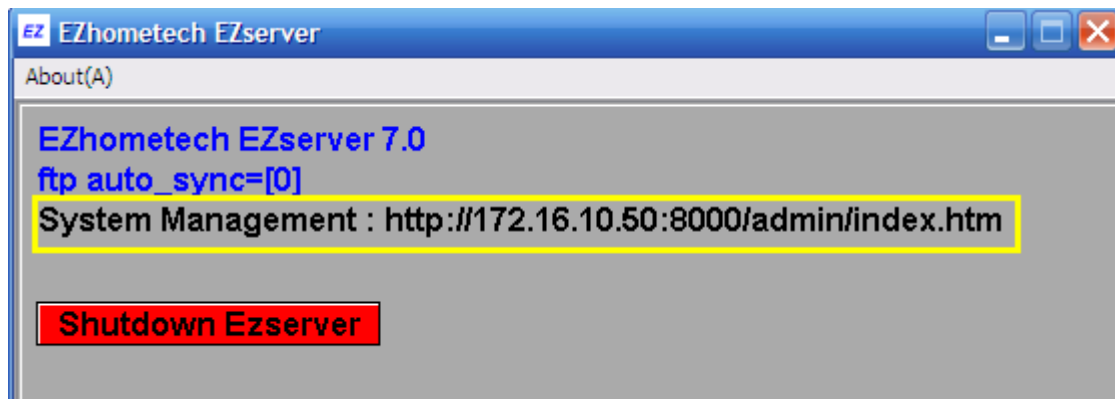
A. For Windows Platform

Ezserver7.x.xxx_win.zip contains a folder “ezhometech” that has two folders, one is “ezserver7.x.xxx” folder for server side, the other is “emlware” folder for client side on PC x86 windows platform.

Part A: EZserver Installation

1. enter ezhometech/ezserver7.x.xxx folder
2. double click ezserver.exe

You will see as below that ezserver is running on IP: 172.16.10.50, port: 8000. And you can click the red button to shutdown EZserver.



If you want to enter EZserver System Managementcan, please use Internet browser to enter EZserver System Management by the URL path , e.g. “http://172.16.10.50:8000/admin/index.htm”. The default user id is “root” and password is “1234”.





After login, you will see 4 icons for Setting and Managemnets as below:



Part B: Streaming Player

1. **PC media player:** If you have a media player such as *vlc player*, *ffplayer* or *Microsoft media player* with *M2T codec (K-Lite Codec Pack)*, you can input the below URL to test channel 1 for braodcast and 1.ts for VOD functions:

- [http:// 172.16.10.50:8000/1.ch](http://172.16.10.50:8000/1.ch)
- [http:// 172.16.10.50:8000/media/videos/ts/Comedy/1.ts](http://172.16.10.50:8000/media/videos/ts/Comedy/1.ts)

2. **Web Video Player:** You can test create a HTML page as below to test channel 1 for broadcast and 1.ts for VOD functions:

- *Test Channel1*

```
<title>EZhometech EZserver</title>
</head>
<body>
<OBJECT id="VIDEO" width="320" height="240"
style="position:absolute; left:0; top:0;"
CLASSID="CLSID:6BF52A52-394A-11d3-B153-00C04F79FAA6"
type="application/x-oleobject">
<PARAM NAME="URL" VALUE="http://172.16.10.50:8000/1.ch">
<PARAM NAME="SendPlayStateChangeEvents" VALUE="True">
<PARAM NAME="AutoStart" VALUE="True">
</OBJECT>
</body>
```



- *Test 1.ts*

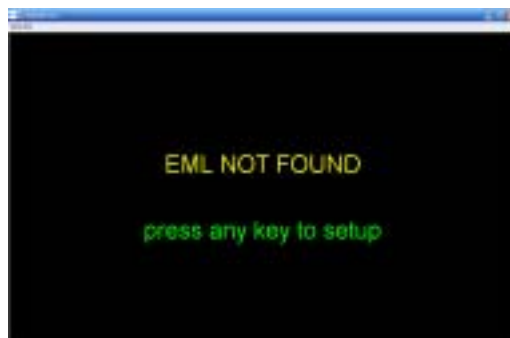
```
<html>
<head>
<title>EZhometech EZserver</title>
</head>
<body>
<video width="720" height="480"src="http://172.16.10.50:8000/media/videos/ts/Comedy/1.ts"
controls autoplay>
</body>
```

- *install M2T codec K-Lite Codec Pack*
- use Microsoft IE to test the HTML page.

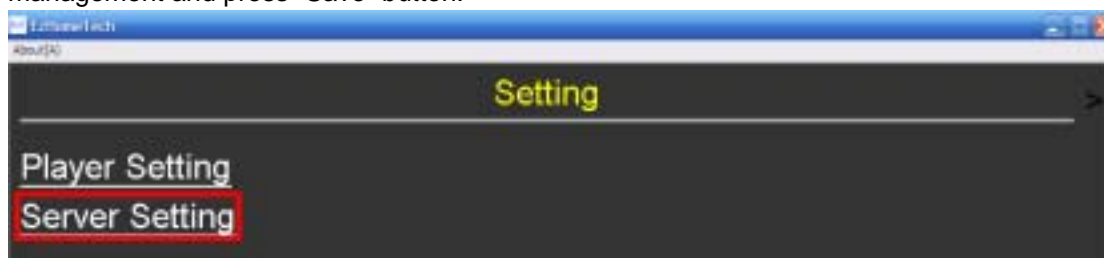
3. *EMLware*: You can follow the commands to test more channels and VOD in a PC.

- *install M2T codec K-Lite Codec Pack*
- enter ezhometech/emlware folder
- double click ezmlware.exe

Because emlware does not set correct OTTxml URL for Top Menu that is defined by xml language now, you will see the below screen.



You just click any key or mouse button to enter the emlware setting menu and select Server Setting to input OTTxml URL that is EZserver eml folder and EZserver IP for the player management and press "Save" button.

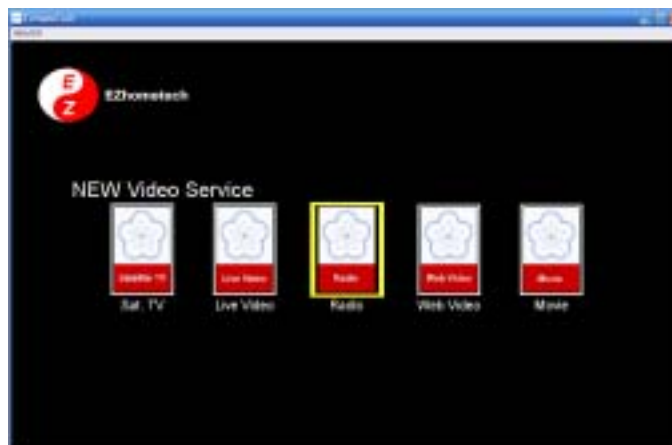




www.ezhometech.com
13F-1, No.189, Sec.2, Keelung Road, Taipei, Taiwan, R.O.C.
Tel: 886-2-27354224 Fax: 886-2-27354224

The screenshot shows a window titled "EZhomeTech" with a sub-header "Server Setting". It contains two input fields: "OTTxml URL:" with the value "http://172.16.10.50:8000/eml/eml.xml" (highlighted with a red border) and "EZserver IP:" with the value "172.16.10.50" and a port field containing "6001". At the bottom are "Cancel" and "Save" buttons.

Then emlware will connect EZserver and show the Top menu of emlware as below:






Part C: RTMP URL Input on EZserver Channle 1

If you have RTMP Streaming Video,

1. modify **channel 1 media source** to `rtmp://192.168.0.2/live/ez100` in EZserver Channel Management as below:



EZhometech

[Logout](#) [back](#)

Channel Management

Total Channle No.: 5 [Add Channel](#)

Channel	Media Source			
1	<input type="text" value="rtmp://192.168.0.2/live/ez100"/>	Save	Del	Watch (IE only)
2	<input type="text" value="rtmp://192.168.0.2/live/ez101"/>	Save	Del	Watch (IE only)
3	<input type="text" value="rtmp://192.168.0.2/live/ez102"/>	Save	Del	Watch (IE only)
4	<input type="text" value="rtmp://192.168.0.2/live/ez103"/>	Save	Del	Watch (IE only)
5	<input type="text" value="rtmp://192.168.0.2/live/ez104"/>	Save	Del	Watch (IE only)

EZhometech Copyright

2. If you have a media player with rtmp streaming such as *ffplayer*, you can input the below commands to test channel 1 for braodcast
 - `ffplay rtmp:// 172.16.10.50/live/1.ch`
 - `ffplay rtmp:// 172.16.10.50/live/1.ch?u=root:p=1234`(`"?u=root:p=1234"` means user id is "root" and password is "1234", it needs EZhometech subscriber management installed in ezserver folder)



Part D: Satellite TV on EZserver Channle 1

If you have a Dreambox or simliar device (e.g. IP 192.168.10.2)

1. Use a PC media player to watch a satellite program from it. (e.g.
<http://192.168.10.2:8001/1:0:1:76C0:40E:1:C00000:0:0:0>)
2. Go to EZserver Channel Management as below:



EZhometech

[Logout](#) [back](#)

Channel Management

Total Channle No.: 5 [Add Channel](#)

Channel	Media Source			
1	<input type="text" value="https://www.ezhometech.tv:8001/1:0:1:76C0:40E:1:C00000:0:0:0"/>	Save	Del	Watch (IE only)
2	<input type="text" value="https://www.ezhometech.tv:8001/1:0:1:76C0:41E:1:C00000:0:0:0"/>	Save	Del	Watch (IE only)
3	<input type="text" value="https://www.ezhometech.tv:8001/1:0:1:76C0:42E:1:C00000:0:0:0"/>	Save	Del	Watch (IE only)
4	<input type="text" value="https://www.ezhometech.tv:8001/1:0:1:76C0:43E:1:C00000:0:0:0"/>	Save	Del	Watch (IE only)
5	<input type="text" value="https://www.ezhometech.tv:8001/1:0:1:76C0:44E:1:C00000:0:0:0"/>	Save	Del	Watch (IE only)

EZhometech Copyright


3. modify **channel 1 media source** to
<https://192.168.10.2:8001/1:0:1:76C0:40E:1:C00000:0:0:0>
4. *install M2T codec K-Lite Codec Pack*
5. Click **Watch (IE only)** or use **Part B: Streaming Player** to watch the satellite program



Part E: Encoder or Streamer on EZserver Channle 1

If you have a Encoder or streamer supporting multicast

1. Set the video output of your device to udp://224.1.1.1:7001
2. Go to EZserver Channel Management as below:



EZhometech

[Logout](#) [back](#)

Channel Management

Total Channle No.: 5 [Add Channel](#)

Channel	Media Source			
1	udp://224.1.1.1:7001	Save	Del	Watch (IE only)
2	udp://224.1.1.2:7001	Save	Del	Watch (IE only)
3	udp://224.1.1.3:7001	Save	Del	Watch (IE only)
4	udp://224.1.1.4:700	Save	Del	Watch (IE only)
5	udp://224.1.1.5:7001	Save	Del	Watch (IE only)

EZhometech Copyright

3. modify **channel 1 media source** to udp://224.1.1.1:7001
4. *install M2T codec K-Lite Codec Pack*
5. Click **Watch (IE only)** or use **Part B: Streaming Player** to watch the video.

More Detial for Manual is at

EZserver: http://www.ezhometech.com/developer/ezserver_installation/user_manual.htm

EMLware: http://www.ezhometech.com/developer/emlware/user_manual.htm



B. For Linux Platform

Ezserver7.x.xxx_linux.zip contains a folder “ezhometech” that has a folder and a tar file. The tar file is ezserver7.x.xxx.tar for Linux server side, the other is “emlware” folder for client side on PC x86 windows platform.

Part A: EZserver Installation

On Linux Server console, input the below commands:

1. tar xfvz ezserver7.x.xxx.tar /*xxx: release version*/
2. cd ezserver
3. ./ezserver

You will see as below that ezserver is running on IP: 172.16.10.51, port: 8000. And you can Ctrl key with C key to shutdown EZserver.

```
-----
Open User Log...
g_Network_interface eth0
Movie_Fee_Refresh_Process wake_up ...
HTTP Server Starting
VOD RTP UDP Server Starting
RTSP Server Starting
VOD_Monitor_Server Starting
Player Management Server Starting
RTSP_Monitor_Server Starting
System Management : http://172.16.10.51:8000/admin/index.htm
EZserver is running... and ftp auto_sync [8]
Channel Log Opened...
Press Ctrl+C to quit Ezserver
```

If you want to enter EZserver System Managementcan, please use Internet browser to enter EZserver System Management by the URL path , e.g.
“http://172.16.10.51:8000/admin/index.htm”. The default user id is “root” and password is “1234”.





www.ezhometech.com
13F-1, No.189, Sec.2, Keelung Road, Taipei, Taiwan, R.O.C.
Tel: 886-2-27354224 Fax: 886-2-27354224

After login, you will see 4 icons for Setting and Managemnets as below:



Part B: Streaming Player

1. **PC media player:** If you have a media player such as *vlc player*, *ffplayer* or *Microsoft media player* with *M2T codec (K-Lite Codec Pack)*, you can input the below URL to test channel 1 for braodcast and 1.ts for VOD functions:
 - [http:// 172.16.10.51:8000/1.ch](http://172.16.10.51:8000/1.ch)
 - [http:// 172.16.10.51:8000/media/videos/ts/Comedy/1.ts](http://172.16.10.51:8000/media/videos/ts/Comedy/1.ts)
2. **Web Video Player:** You can test create a HTML page as below to test channel 1 for broadcast and 1.ts for VOD functions:
 - *Test Channel1*

```
<title>EZhometech EZserver</title>
</head>
<body>
<OBJECT id="VIDEO" width="320" height="240"
style="position: absolute; left: 0; top: 0;"
CLASSID="CLSID:6BF52A52-394A-11d3-B153-00C04F79FAA6"
type="application/x-oleobject">
<PARAM NAME="URL" VALUE="http://172.16.10.51:8000/1.ch">
<PARAM NAME="SendPlayStateChangeEvents" VALUE="True">
<PARAM NAME="AutoStart" VALUE="True">
</OBJECT>
</body>
```



- *Test 1.ts*

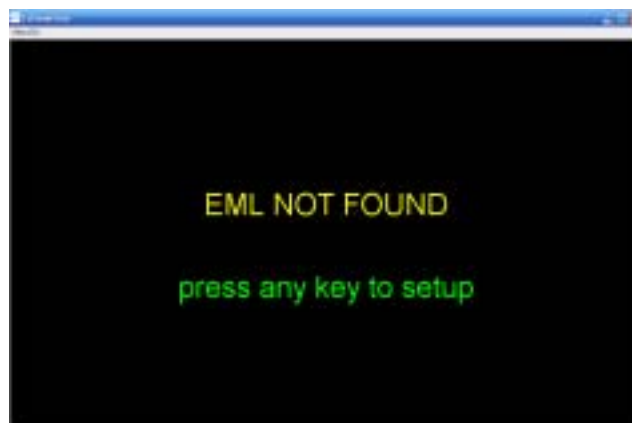
```
<html>
<head>
<title>EZhometech EZserver</title>
</head>
<body>
<video width="720" height="480"src="http://172.16.10.51:8000/media/videos/ts/Comedy/1.ts"
controls autoplay>
</body>
```

- *install M2T codec K-Lite Codec Pack*
- use Microsoft IE to test the HTML page.

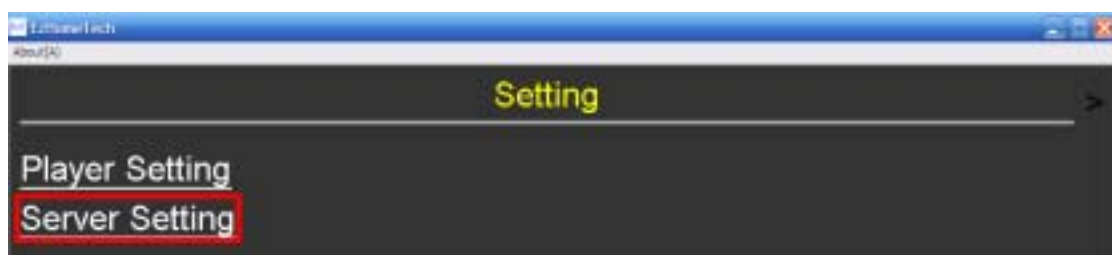
3. *EMLware*: You can follow the commands to test more channels and VOD in a PC.

- *install M2T codec K-Lite Codec Pack*
- enter ezhometech/emlware folder
- double click ezmlware.exe

Because emlware does not set correct OTTxml URL for Top Menu that is defined by xml language now, you will see the below screen.

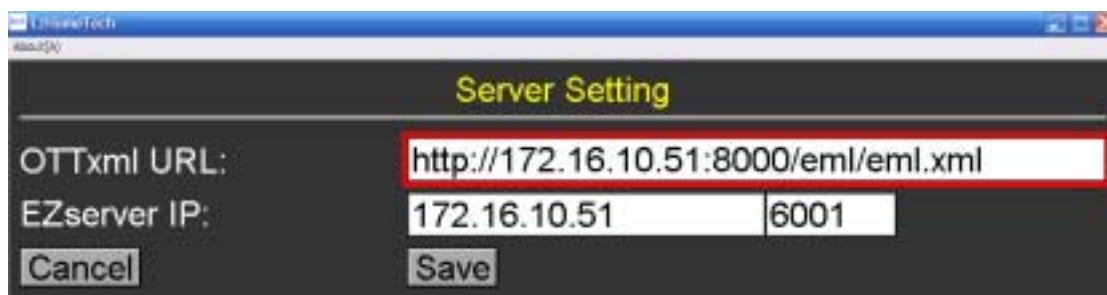


You just click any key or mouse button to enter the emlware setting menu and select Server Setting to input OTTxml URL that is EZserver eml folder and EZserver IP for the player management and press "Save" button.





www.ezhometech.com
13F-1, No.189, Sec.2, Keelung Road, Taipei, Taiwan, R.O.C.
Tel: 886-2-27354224 Fax: 886-2-27354224



Then emlware will connect EZserver and show the Top menu of emlware as below:





Part C: RTMP URL Input on EZserver Channle 1

If you have RTMP Streaming Video,

1. modify **channel 1 media source** to `rtmp://192.168.0.2/live/ez100` in EZserver Channel Management as below:

Channel Management

Total Channle No.: 5 [Add Channel](#)

Channel	Media Source	Save	Del	Watch (IE only)
1	<input type="text" value="rtmp://192.168.0.2/live/ez100"/>	Save	Del	Watch (IE only)
2	<input type="text" value="rtmp://192.168.0.2/live/ez101"/>	Save	Del	Watch (IE only)
3	<input type="text" value="rtmp://192.168.0.2/live/ez102"/>	Save	Del	Watch (IE only)
4	<input type="text" value="rtmp://192.168.0.2/live/ez103"/>	Save	Del	Watch (IE only)
5	<input type="text" value="rtmp://192.168.0.2/live/ez104"/>	Save	Del	Watch (IE only)

EZhometech Copyright

2. If you have a media player with rtmp streaming such as *ffplayer*, you can input the below commands to test channel 1 for braodcast
 - `ffplay rtmp:// 172.16.10.50/live/1.ch`
 - `ffplay rtmp:// 172.16.10.50/live/1.ch?u=root:p=1234`(`"?u=root:p=1234"` means user id is "root" and password is "1234", it needs EZhometech subscriber management installed in ezserver folder)



Part D: Satellite TV on EZserver Channle 1

If you have a Dreambox or simliar device (e.g. IP 192.168.10.2)

1. Use a PC media player to watch a satellite program from it. (e.g.
<http://192.168.10.2:8001/1:0:1:76C0:40E:1:C00000:0:0:0>)
2. Go to EZserver Channel Management as below:



EZhometech

[Logout](#) [back](#)

Channel Management

Total Channle No.: 5 [Add Channel](#)

Channel	Media Source			
1	<input type="text" value="https://www.ezhometech.tv:8001/1:0:1:76C0:40E:1:C00000:0:0:0"/>	Save	Del	Watch (IE only)
2	<input type="text" value="https://www.ezhometech.tv:8001/1:0:1:76C0:41E:1:C00000:0:0:0"/>	Save	Del	Watch (IE only)
3	<input type="text" value="https://www.ezhometech.tv:8001/1:0:1:76C0:42E:1:C00000:0:0:0"/>	Save	Del	Watch (IE only)
4	<input type="text" value="https://www.ezhometech.tv:8001/1:0:1:76C0:43E:1:C00000:0:0:0"/>	Save	Del	Watch (IE only)
5	<input type="text" value="https://www.ezhometech.tv:8001/1:0:1:76C0:44E:1:C00000:0:0:0"/>	Save	Del	Watch (IE only)

EZhometech Copyright

3. modify **channel 1 media source** to
<https://192.168.10.2:8001/1:0:1:76C0:40E:1:C00000:0:0:0>
4. *install M2T codec K-Lite Codec Pack*
5. Click **Watch (IE only)** or use **Part B: Streaming Player** to watch the satellite program



Part E: Encoder or Streamer on EZserver Channle 1

If you have a Encoder or streamer supporting multicast

1. Set the video output of your device to udp://224.1.1.1:7001
2. Go to EZserver Channel Management as below:



EZhometech

[Logout](#) [back](#)

Channel Management

Total Channle No.: 5 [Add Channel](#)

Channel	Media Source			
1	udp://224.1.1.1:7001	Save	Del	Watch (IE only)
2	udp://224.1.1.2:7001	Save	Del	Watch (IE only)
3	udp://224.1.1.3:7001	Save	Del	Watch (IE only)
4	udp://224.1.1.4:700	Save	Del	Watch (IE only)
5	udp://224.1.1.5:7001	Save	Del	Watch (IE only)

EZhometech Copyright

3. modify **channel 1 media source** to udp://224.1.1.1:7001
4. *install M2T codec K-Lite Codec Pack*
5. Click **Watch (IE only)** or use **Part B: Streaming Player** to watch the video.

More Detial for Manual is at

EZserver: http://www.ezhometech.com/developer/ezserver_installation/user_manual.htm

EMLware: http://www.ezhometech.com/developer/emlware/user_manual.htm