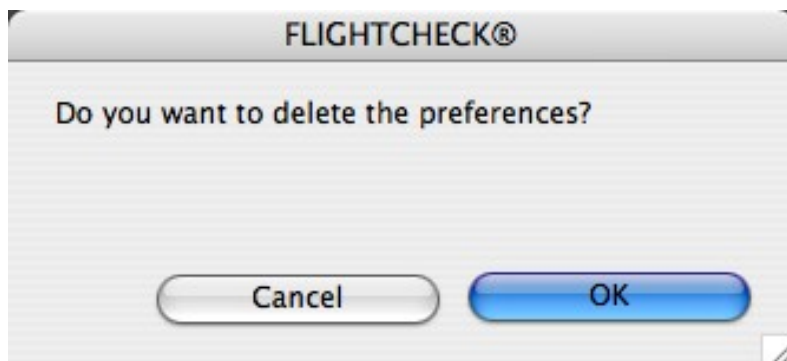


FlightCheck 6 Install ReadMe

Hold The Shift Key Down To Delete Your Preferences

If you ran any version of the FlightCheck 6 beta, when you install the release version of FlightCheck 6, YOU MUST HOLD THE SHIFT KEY DOWN when you first start up FlightCheck 6.

Holding the Shift Key down brings up a window asking whether you want to delete your preferences. Click on OK. If you fail to do this, you will experience unpredictable behaviour.

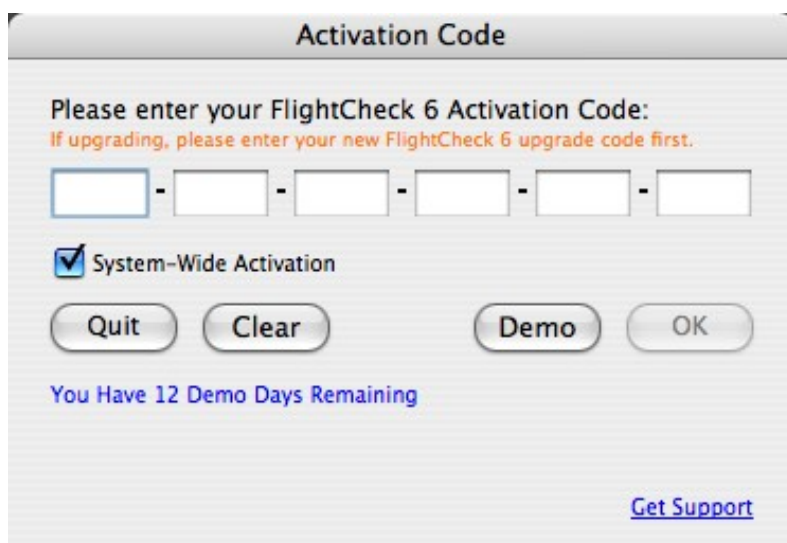


The Activation Window Comes Up

Once you delete your preferences, you will be presented with the Activation Code window.

If you have purchased a full code (non-upgrade) for FlightCheck 6, enter it into the area provided. If you received your code via email, it is safest and easiest to copy and paste your code into the area provided.

If your code is a valid FlightCheck 6 code, the OK button will become active, at which point click on the OK button to continue with the installation of FlightCheck 6.

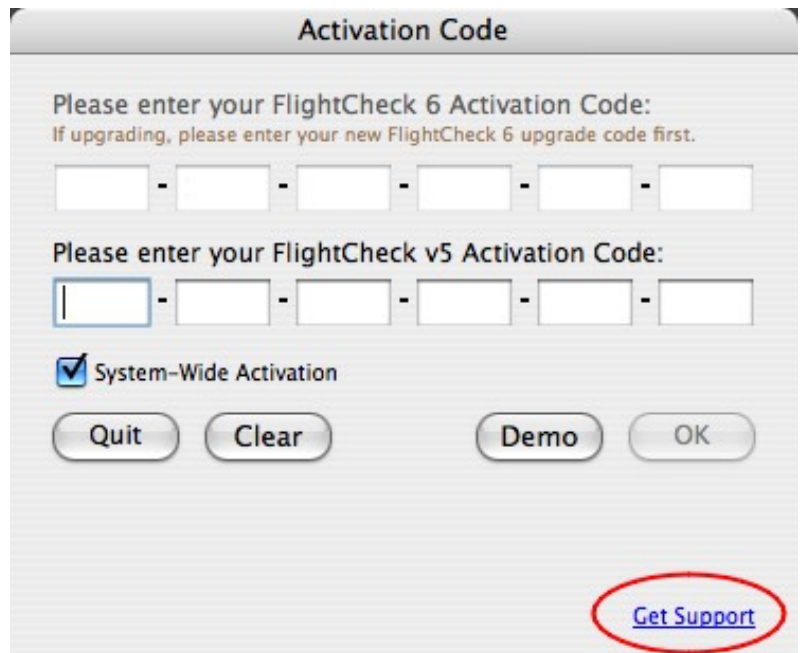


Activation Window Asking For A FlightCheck 5 Activation Code

If you are upgrading from FlightCheck 5.X to 6, first enter your FlightCheck 6 upgrade code. FlightCheck 6 will then look for a FlightCheck 5 Preferences code and if it finds one will open a second activation code entry area and fill in your code.

If your code is a valid FlightCheck 5 code, the OK button will become active, at which point click on the OK button to continue with the installation of FlightCheck 6.

If you run into problems you can click on the "Get Support" link in the lower right corner of the Activation Code window. This will open up a Tech Support Request Form in your default web browser and fill in your activation code info (as shown in the Activation Code Window). You will then need to fill in the remaining contact information and a description of the problem you are reporting. When finished filling in the Tech Support Request form, click on the Submit button to send the form into Markzware.



The screenshot shows the 'Activation Code' window. It has a title bar 'Activation Code'. Inside, there are two sections for entering codes. The first section is titled 'Please enter your FlightCheck 6 Activation Code:' and includes a sub-instruction 'If upgrading, please enter your new FlightCheck 6 upgrade code first.' Below this is a row of six empty text boxes separated by hyphens. The second section is titled 'Please enter your FlightCheck v5 Activation Code:' and also has a row of six empty text boxes separated by hyphens. Below these sections is a checkbox labeled 'System-Wide Activation' which is checked. At the bottom, there are four buttons: 'Quit', 'Clear', 'Demo', and 'OK'. In the bottom right corner, there is a blue hyperlink 'Get Support' which is circled in red.

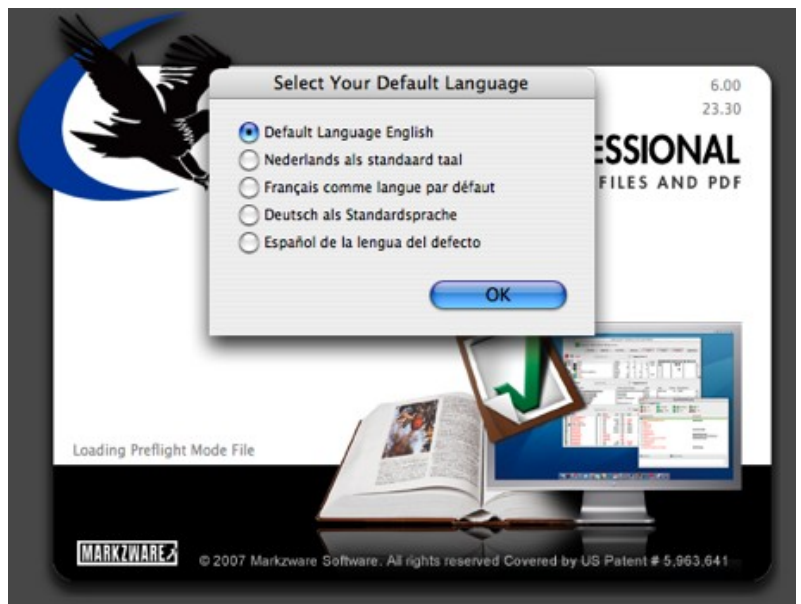
Once Activated, FlightCheck Will Build A Font DataBase

Once you have successfully activated FlightCheck, the program will scan your system for fonts and build its internal fonts database. Depending on how many fonts you have loaded, this may take some time. Please be advised that people who have over 300-500 fonts loaded at one time will experience a long fonts database build time.



Select Your Default Language

Once the fonts database has finished building, you will be presented with a screen to select your language. Click on a radio button to select your default language. Once you have selected your language, click on OK.



Registration Screen

After selecting your language, you will be prompted to register your copy of FlightCheck. The main benefit of registering is that Markzware will be able to help you in the future if you lose your activation code. You must enter accurate information into the registration area in order take advantage of this feature. It is safest to copy and paste your serial number into the registration area.

Once you make a selection on this screen, you will be up and running in FlightCheck.

