

FlightCheck 6.7X Activation, Deactivation & Reactivation



1 FlightCheck 6.7X Activation, Deactivation & Reactivation

1.1	Activating FlightCheck 6.7x	4
1.2	Deactivating and Uninstalling FlightCheck 6.7x	14
1.3	Reactivating FlightCheck 6.7x after installing an update or re-downloading the application	22

FlightCheck 6.7X Activation, Deactivation & Reactivation

Activating FlightCheck 6.7x

PLEASE NOTE - Each License ID has the product name in the actual License ID. Current users of FlightCheck 6.50 will be able to use their existing License ID to activate FlightCheck 6.7X (*in other words FlightCheck 6.7X is a free upgrade from FlightCheck 6.5X*).

When you first start up FlightCheck 6.7X you will be presented with the license activation screen as shown in step 001. This document shows the activation process.

PLEASE NOTE: A LIVE INTERNET CONNECTION IS REQUIRED TO LICENSE & ACTIVATE FLIGHTCHECK

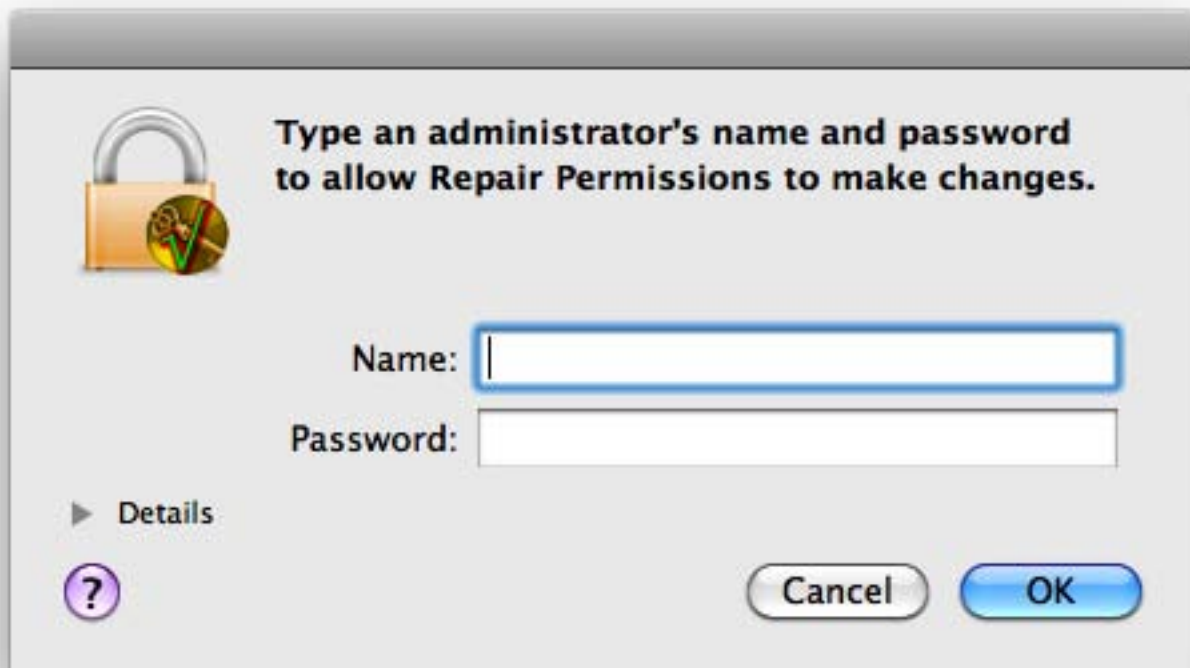
As an initial test, you should be able to successfully reach www.derman.com. If you are behind a firewall or are using a proxy server and encounter any issues activating FlightCheck, please visit the [Derman website](#) and review their documentation on handling these issues. At this time if you are running a proxy server that uses a .pac file, this is not supported by the Licensing technology and FlightCheck will not activate under this condition. After reviewing the Derman documentation if you are still having issues, please contact [Markzware Tech Support](#).

P1 - Initial License Control Window if installing under a Non-Admin Account Only



The very first time you run a product that uses LicenseControl (in this case FlightCheck), you will see the screen above, explaining what is required to setup LicenseControl. **This screen should not appear if you are logged into an Admin account.**

P2 - Enter Admin User name and Password if installing under a Non-Admin Account Only



If you do not have Admin access to your computer, you will need to contact your System Admin and have them assist you in setting up LicenseControl.

If you are logged in as an Admin. you should not see the above window, the LicenseControl folder should be created automatically.

P3 - After successfully entering the Admin Username and Password if installing under a Non-Admin Account Only



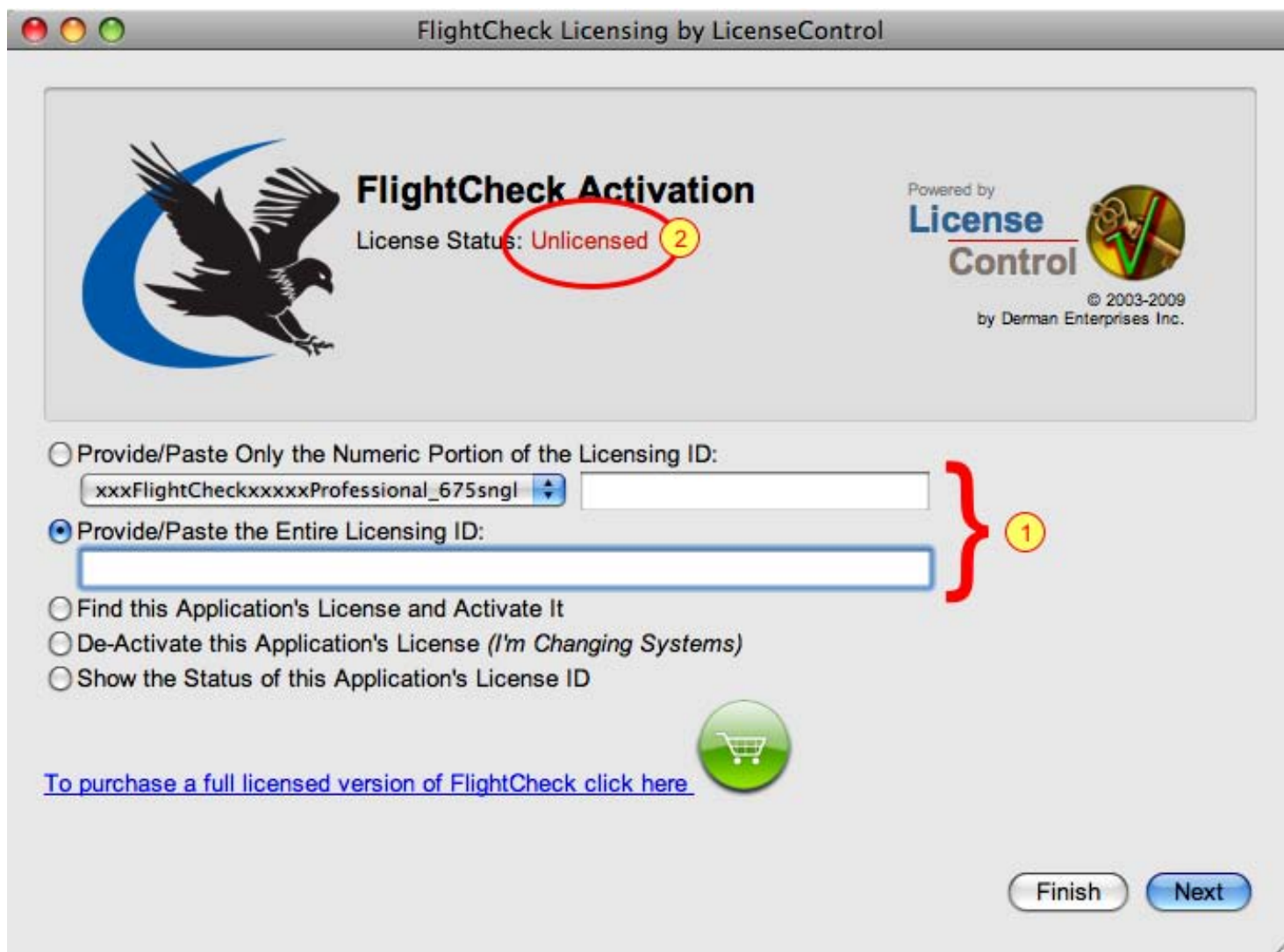
If you have successfully entered an Admin Username and Password, LicenseControl will show the "Created" pane. Click Continue (1) to close the "Created pane" and then click on Continue (2) to move to the next step of licensing and activating your copy of FlightCheck

P4 - If you enter an invalid Admin Username or Password



If you enter an incorrect username and password you will see the message above. Please make sure that you entered the Admin User name and Password correctly. If you are unable to get past this message you will need to contact your System Admin and have them assist you in setting up LicenseControl.

001 - Initial Activation Window



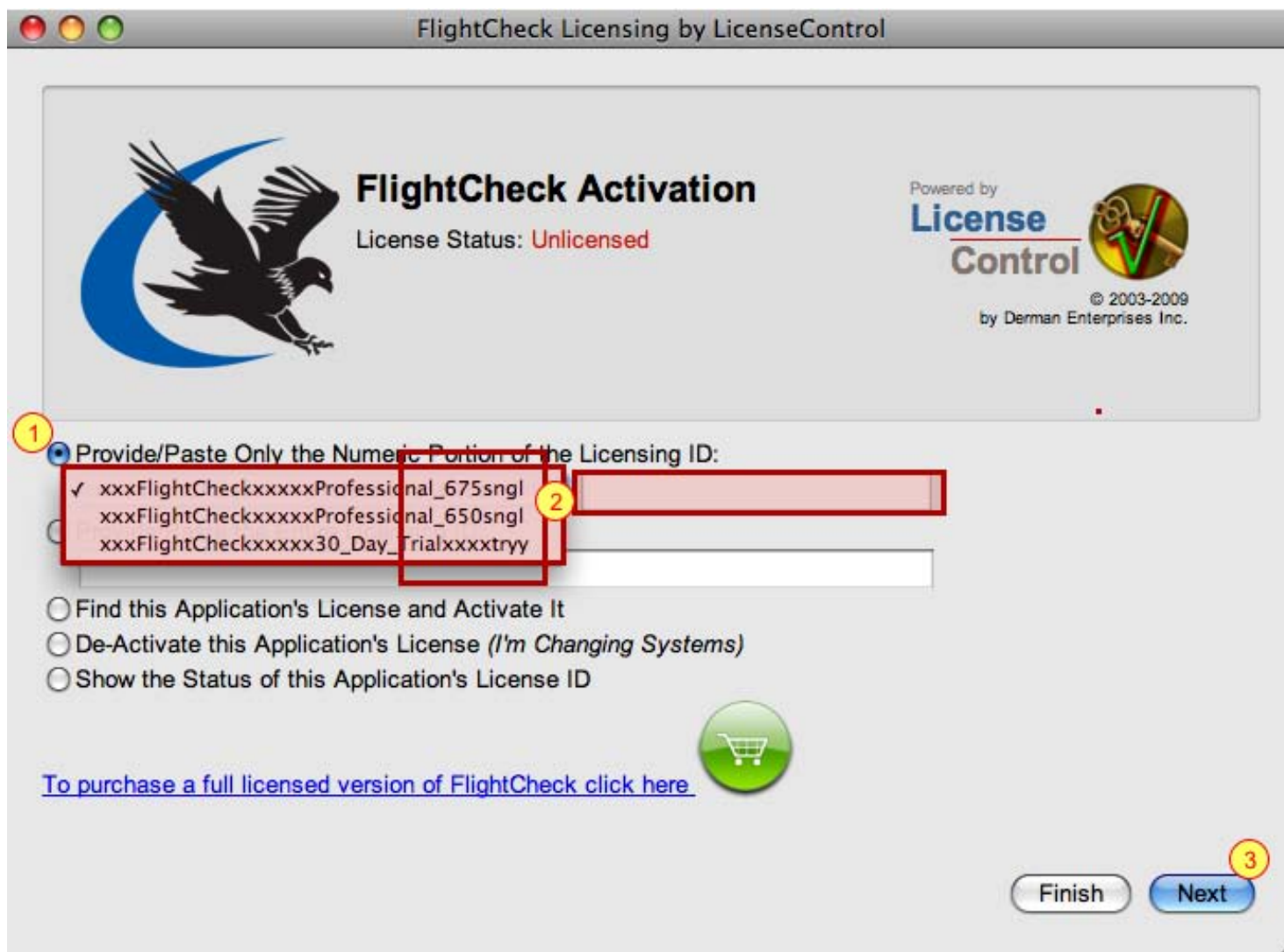
The license process for FlightCheck starts up another application named LicenseControl. FlightCheck will continue to run in the background while you license and activate your copy of FlightCheck.

Copy and Paste your License ID into the area provided. Please do not attempt to manually type in your full License ID as it is quite long and you will most likely make a mistake, thus preventing activation of FlightCheck.

(1) There are two areas where a License ID **can** be entered, depending on whether you received your code electronically or whether you purchased a boxed product and received your code on a printed label.

(2) Note the initial state of FlightCheck is "Unlicensed"

002 - If you have a printed label with your License ID on it

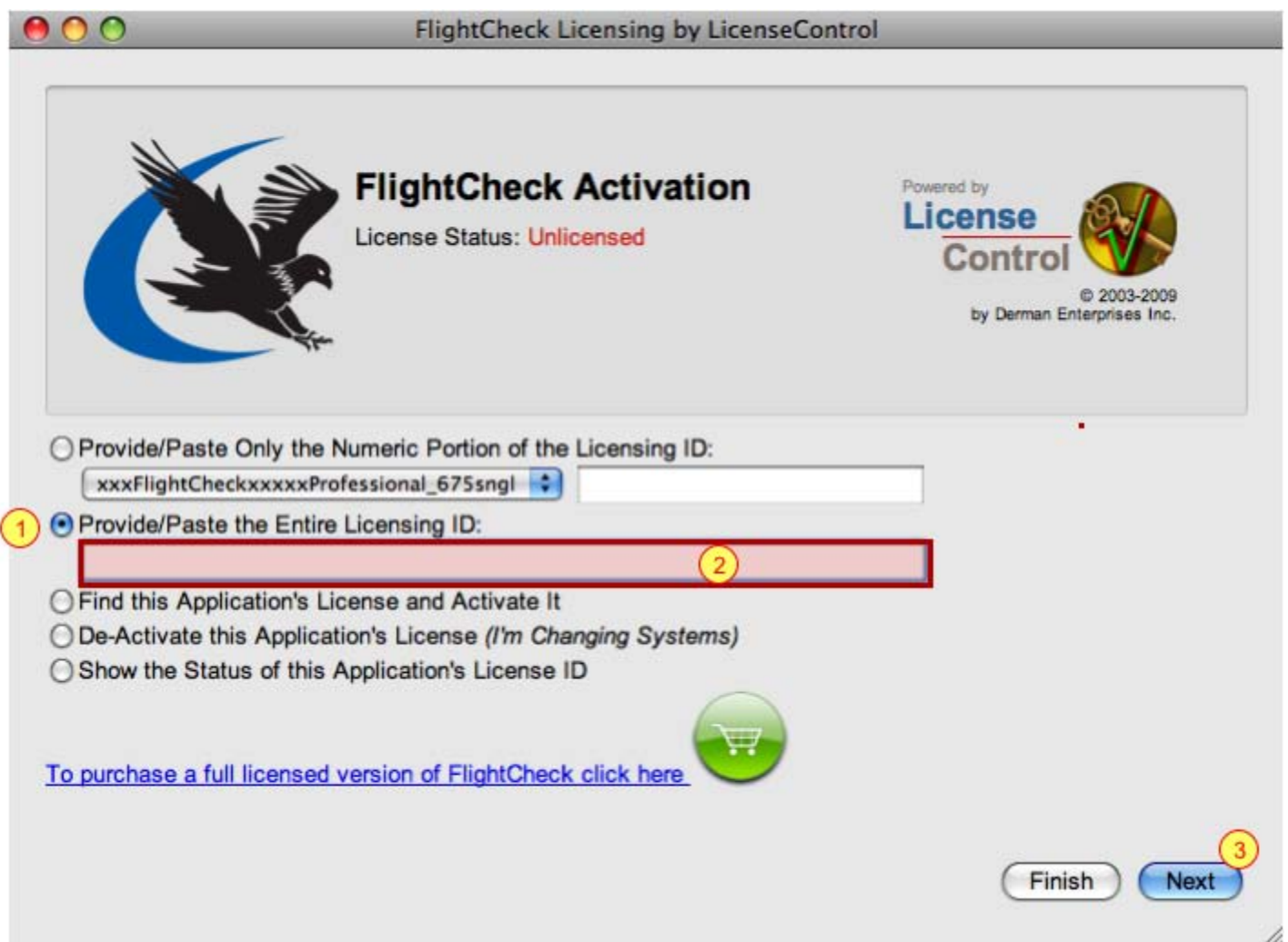


If you received your License ID on a printed paper label (a boxed product) select the **Provide/Paste Only the Numeric Portion of the Licensing ID** radio button (1) and use this area to enter in only the numeric portion of your License ID. The numeric portion of your License ID is all numbers that appear to the right of the letters **sngl** (2) in your Full or Upgrade License ID, or all of the numbers to the right of the letters **tryy** if you have a Trial License .

(2) You must also select the appropriate type of License from the drop menu. The items in the list represent the three types of codes that will activate FlightCheck 6.7X.

(3) Once you have entered in the numeric portion of your License ID and selected the appropriate prefix type for the License ID you have, click on the Next button (3) to continue.

003 - If you received your License ID electronically



The image shows a screenshot of the 'FlightCheck Licensing by LicenseControl' window. The window has a title bar with standard macOS window controls (red, yellow, green buttons). The main content area features the 'FlightCheck Activation' logo on the left, which includes a stylized eagle and the text 'FlightCheck Activation'. To the right of the logo, it says 'License Status: Unlicensed'. Further right, there is a 'Powered by License Control' logo and text indicating '© 2003-2009 by Derman Enterprises Inc.'. Below the logo, there are three radio buttons for activation options. The first option is 'Provide/Paste Only the Numeric Portion of the Licensing ID:', which is currently unselected. The second option is 'Provide/Paste the Entire Licensing ID:', which is selected and marked with a yellow circle containing the number '1'. Below this selected option is a red rectangular text input field, marked with a yellow circle containing the number '2'. The third option is 'Find this Application's License and Activate It'. Below the radio buttons are three more options: 'Find this Application's License and Activate It', 'De-Activate this Application's License (I'm Changing Systems)', and 'Show the Status of this Application's License ID'. At the bottom left, there is a blue hyperlink: 'To purchase a full licensed version of FlightCheck click here'. To the right of the link is a green circular button with a white shopping cart icon. At the bottom right, there are two buttons: 'Finish' and 'Next'. The 'Next' button is highlighted with a yellow circle containing the number '3'.

FlightCheck Licensing by LicenseControl

FlightCheck Activation
License Status: **Unlicensed**

Powered by
License Control
© 2003-2009
by Derman Enterprises Inc.

☐ Provide/Paste Only the Numeric Portion of the Licensing ID:
xxxFlightCheckxxxxxProfessional_675sngl

1 ☒ Provide/Paste the Entire Licensing ID:
2

☐ Find this Application's License and Activate It
☐ De-Activate this Application's License (I'm Changing Systems)
☐ Show the Status of this Application's License ID

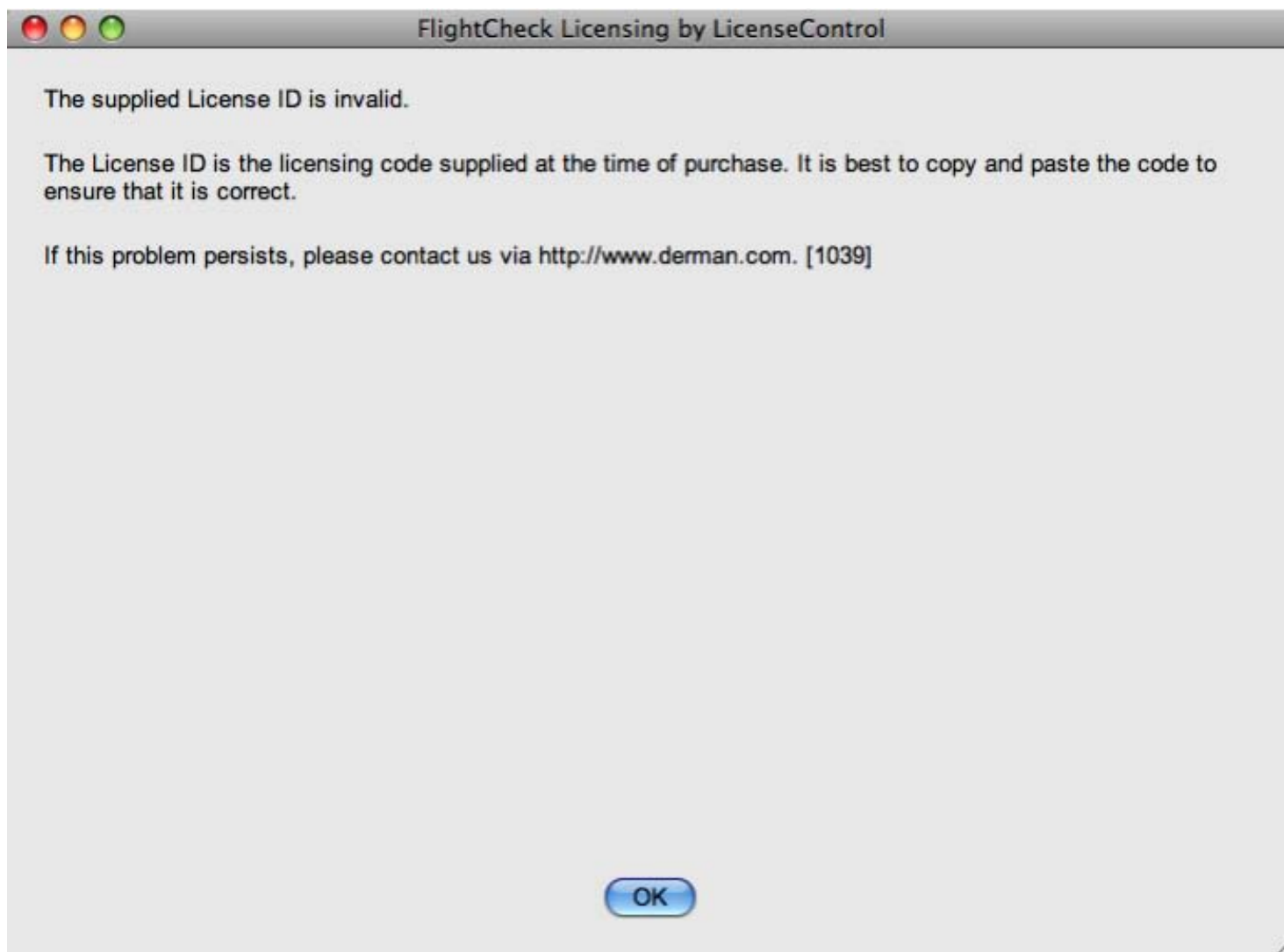
[To purchase a full licensed version of FlightCheck click here](#)

3 Finish Next

If you received your License ID electronically select the **Provide/Paste the Entire Licensing ID** radio button (1) and copy and paste your entire License ID in the area provided (2)

(3) Once you have copied and pasted your entire License ID into the appropriate area, click on the Next button to continue.

004 - Incorrect License ID entered

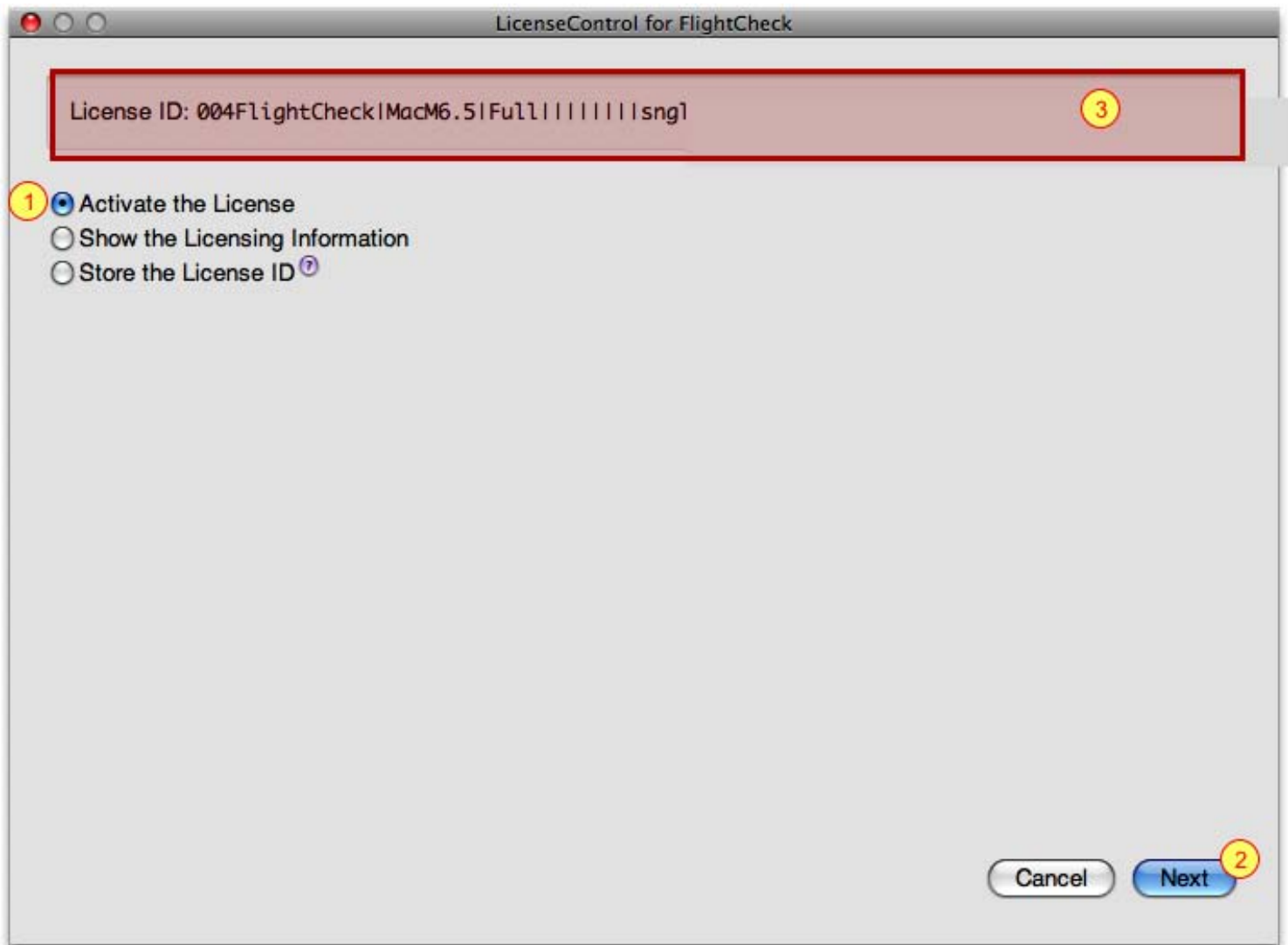


If you mistype or make a mistake entering your License ID, the screen above will appear. Since the License ID is so long, it is always best to copy and paste the code, instead of trying to manually type it in if entering a full License ID. You can copy and paste your code from the email you received after making your online purchase.

If entering only the numeric portion of your License ID in most cases you will need to manually type in the numbers. If you select the incorrect prefix from the drop-down menu and it is a mismatch for the actual License you have, you will also receive the error message above. So remember, if you have a FlightCheck 6.50 code to select the 6.50 Prefix type. If you have a FlightCheck 6.75 code, select the 6.75 Prefix type and if you have a Trial code select the Trial Prefix.

All of the above code types will activate FlightCheck 6.7X

005 - Entering a Correct License ID & Activating your license



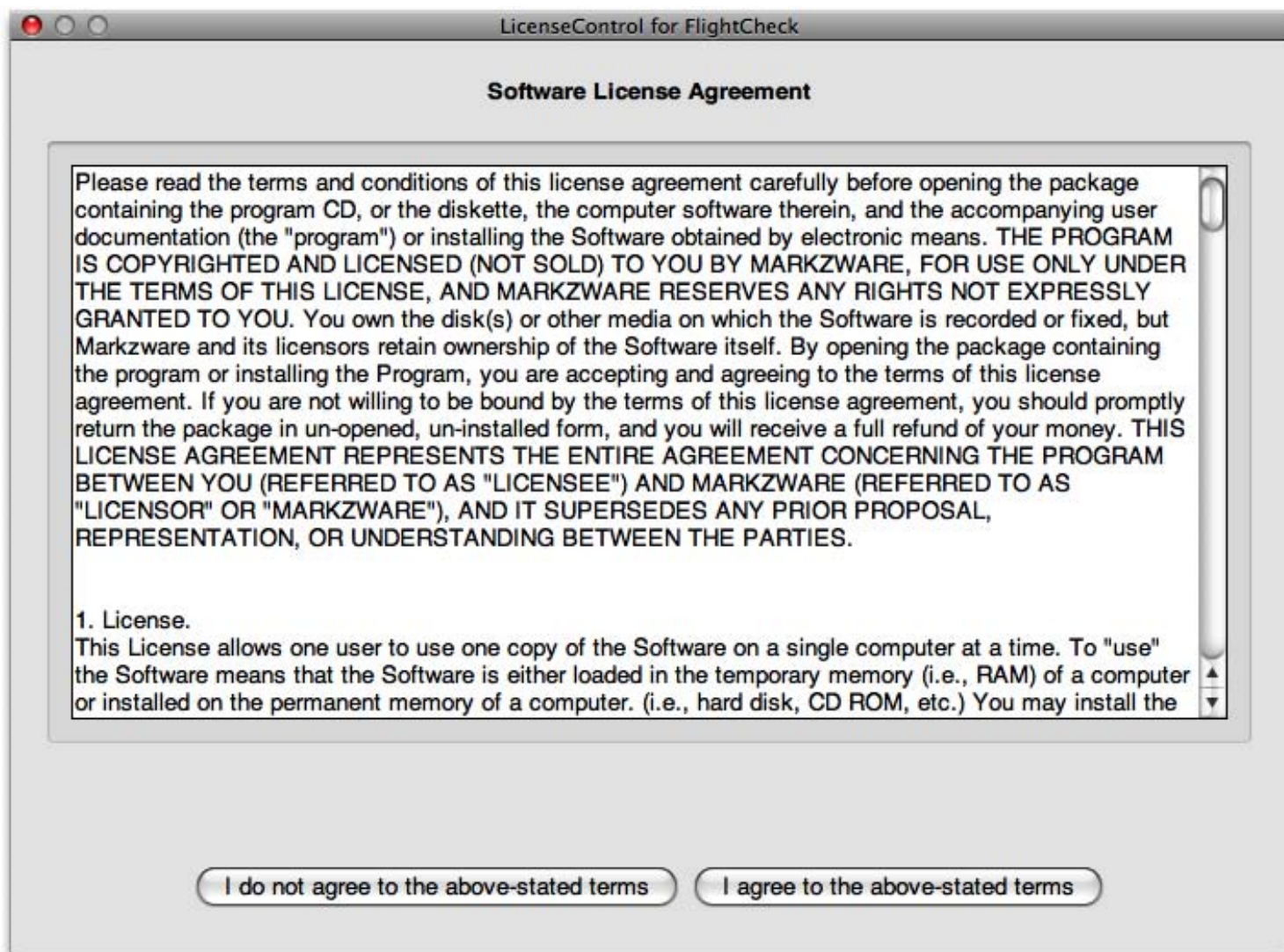
After clicking the Next button in either step 002 or step 003 you will see the above window if you have entered a properly formatted code

(1) Select the "Activate the License" radio button

(2) Click on the Next button

**** Note -** The image above is a sample and part of the License ID has been blocked out. On your computer you should see you entire License ID at the top of the window (3)

006 - License Agreement

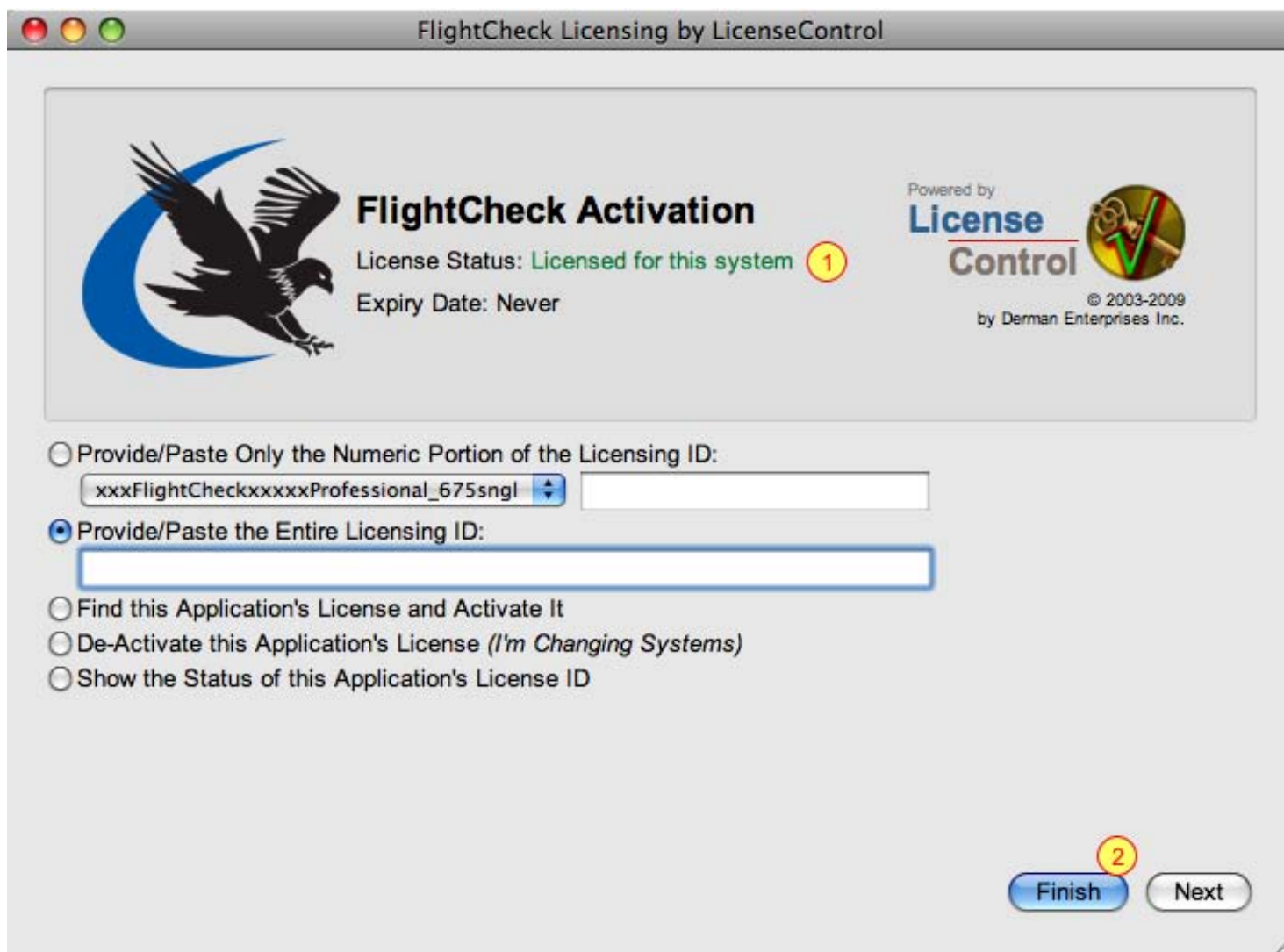


After clicking on the Next button in step 005 you will be presented with the Software License Agreement.

If you do not agree with the Software License Agreement you will not be able to license and use FlightCheck.

If you click on the "I agree to the above stated items" button, the LicenseControl application will connect to the LicenseControl server via the internet to finalize your license validation and license FlightCheck for use on your system.

007 - FlightCheck is Licensed



After clicking on the "I agree to the above stated items" button in step 006 you will be returned to the License Activation Screen.

(1) If your License ID code was validated the License Status for FlightCheck will now show as "Licensed for this system"

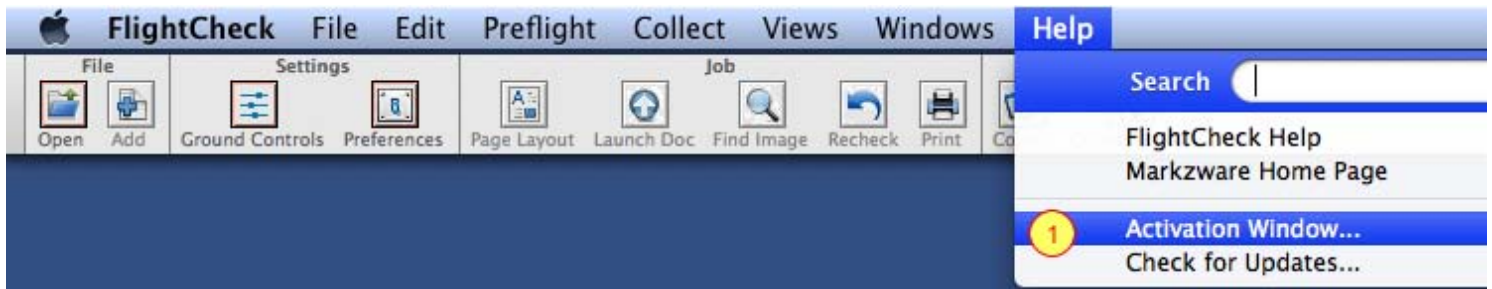
(2) Click on the Finish button to close the LicenseControl application and begin using FlightCheck.

Deactivating and Uninstalling FlightCheck 6.7x

Why would you need to deactivate FlightCheck?

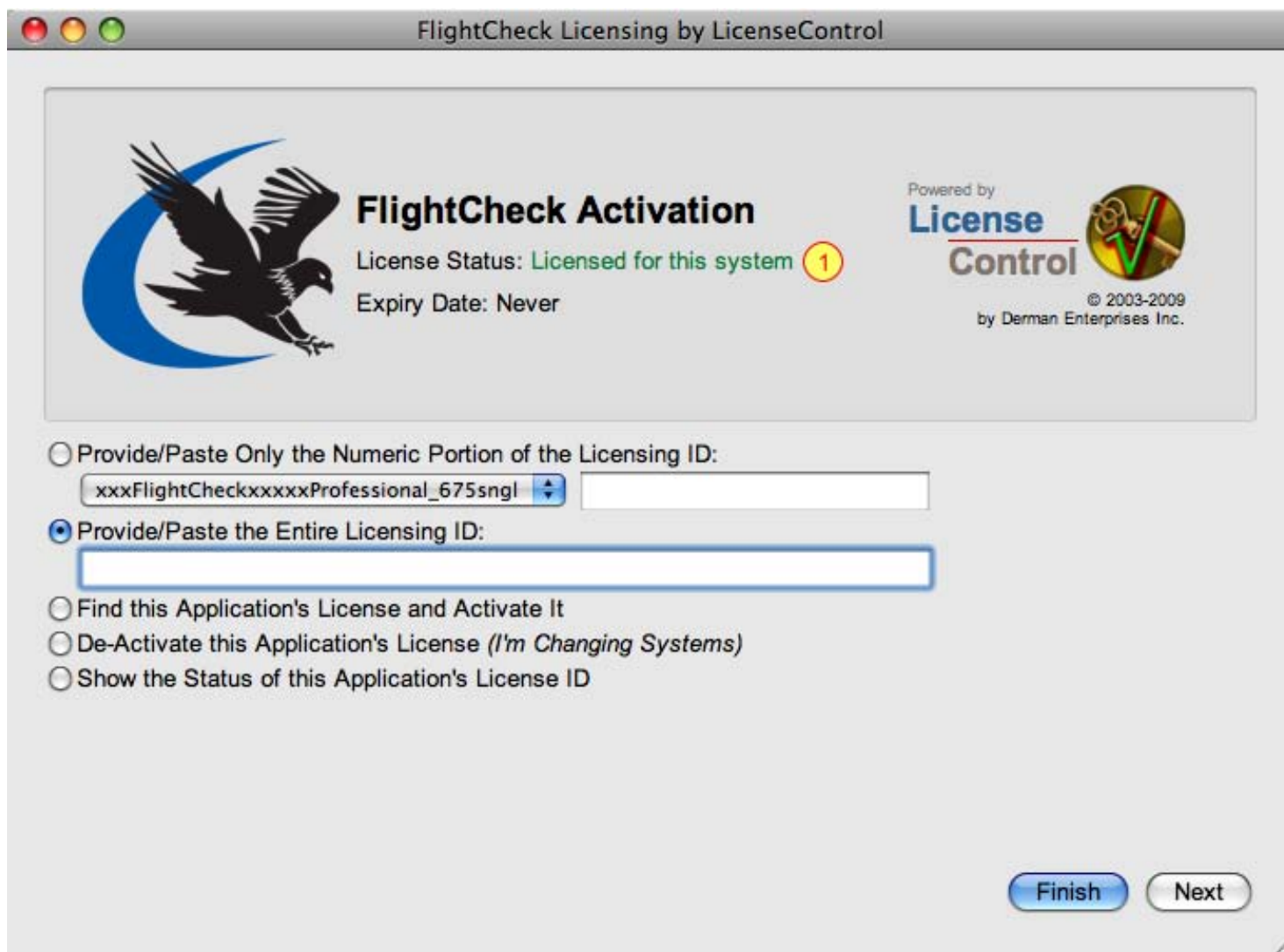
- 1) You are retiring a computer and want to run FlightCheck on a new replacement computer.
- 2) You want to change which computer you run FlightCheck on.

001 - Bring up LicenseControl for FlightCheck



To begin the deactivation process, select Activation Window... (1) from the Help menu.

002 - The LicenseControl Window



In order to deactivate FlightCheck it must first be active and show a License Status of **Licensed for this System** (1)

*If you feel that FlightCheck should show as Licensed for the System and it shows as Unlicensed, try selecting **Find this Application's License and Activate It**, then click on the Next button and see if you can reactivate FlightCheck.*

003 - Deactivate FlightCheck



Select **De-Activate this Application's License (*I'm Changing Systems*)** (1). Then click on the Next button (2) to continue.

Important - You must be connected to the internet in order to deactivate FlightCheck.

004 - De-Activation Confirmation Message

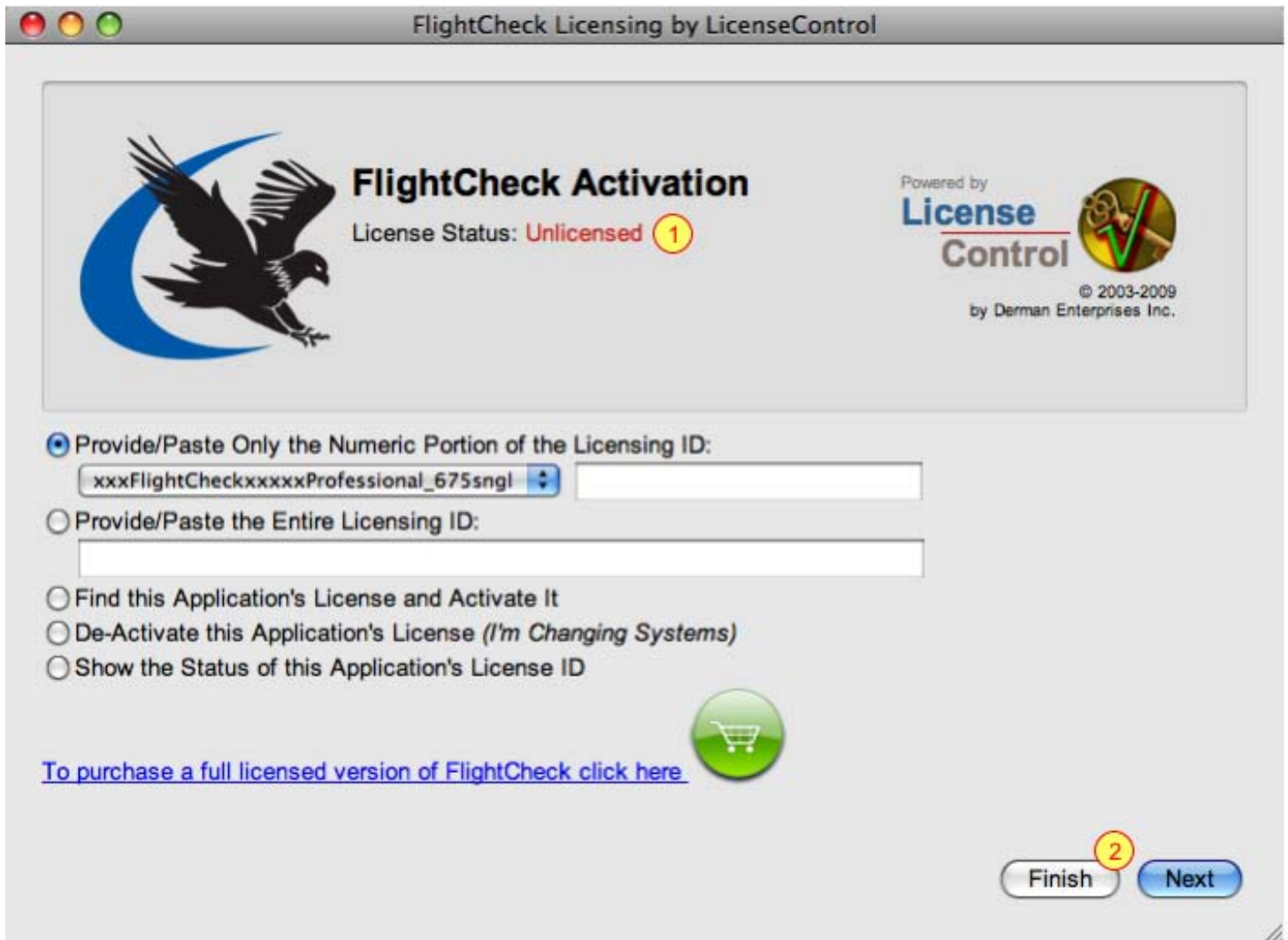


If you have successfully deactivated FlightCheck you will see the above confirmation screen. Once deactivated, you can use your FlightCheck License ID on another system, or move FlightCheck to another system.

If you want to re-activate FlightCheck you will need to have your License ID available, so it is best to enter it into a text file and copy-and-paste it into the required area when reactivating FlightCheck.

Click the OK button (1) to continue.

005 - You are now deactivated and unlicensed




Once you are fully deactivated the status on the LicenseControl window for FlightCheck will show as **Unlicensed** (1).

Click the Finish button (2) to close the LicenseControl window.

006 - Confirmation of deactivation (optional)


FlightCheck Licensing by LicenseControl



FlightCheck Activation

License Status: **Unlicensed**

Powered by
License Control
© 2003-2009
by Derman Enterprises Inc.




☐ Provide/Paste Only the Numeric Portion of the Licensing ID:

☐ Provide/Paste the Entire Licensing ID:

☐ Find this Application's License and Activate It

☐ De-Activate this Application's License (*I'm Changing Systems*)

1 ☒ Show the Status of this Application's License ID

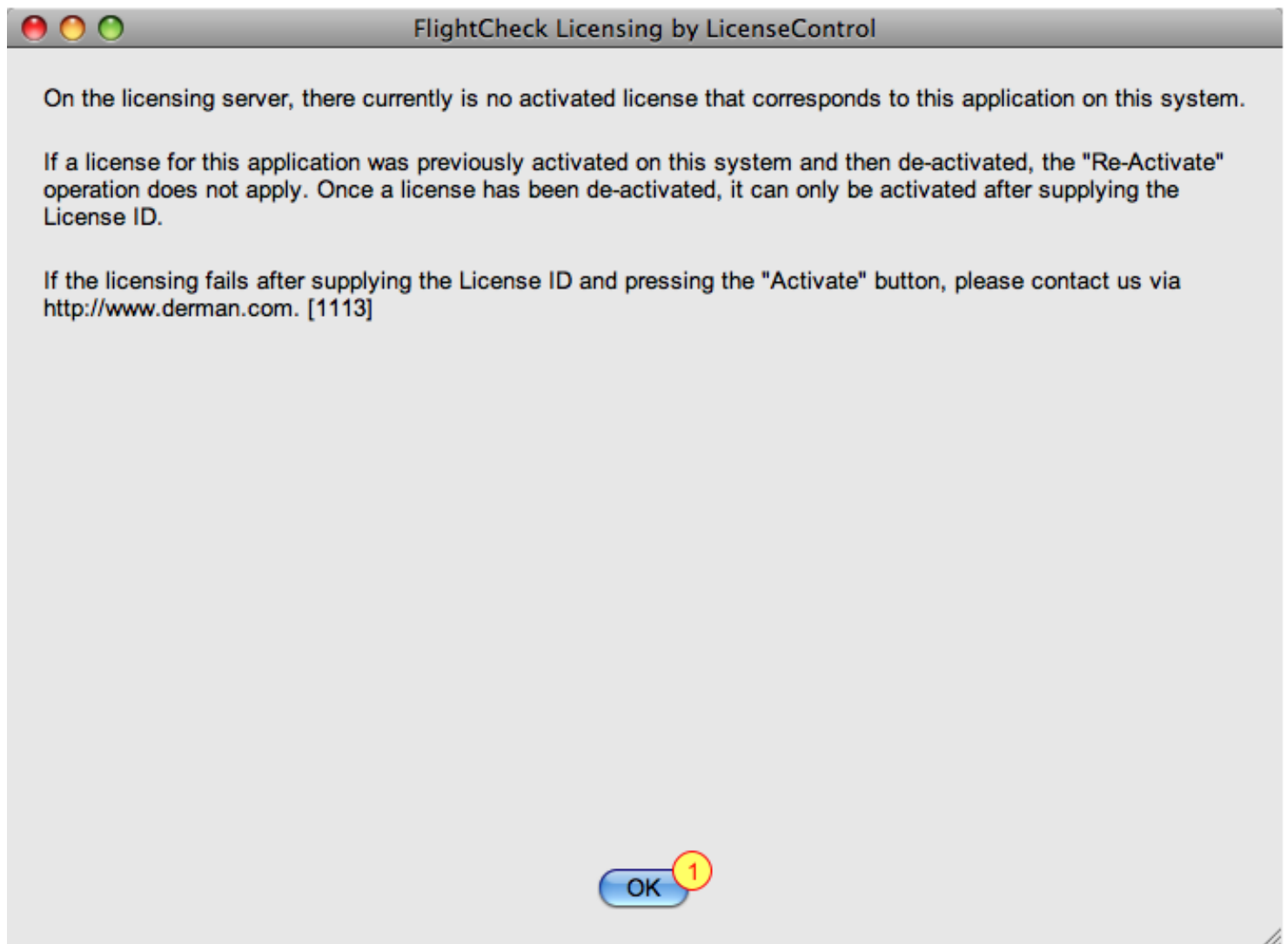
[To purchase a full licensed version of FlightCheck click here.](#) 

2

If you wish to make sure you are deactivated and unlicensed, select **Show the Status of this Application's License ID** (1) and then click on the Next button (2) to view the results.

You must be connected to the internet to perform the above actions.

007 - No activated license for this application



You should receive the above message that there are no activated licenses for this application. Click the OK button (1) to close this window and return to the main LicenseControl window.

008 - You have now confirmed that you are deactivated and unlicensed



Click the Finish button (1) to close the LicenseControl window.

If you wish to reactivate FlightCheck, you will need to re-enter your License ID. To re-activate FlightCheck, simply start up the FlightCheck application and the above LicenseControl window should appear. You can then re-enter your License ID.

Please remember that you must deactivate FlightCheck on the original computer it was running on in order to re-activate on another computer. If you have a multi seat license this may not be necessary, but if you are running a single user license you will need to deactivate on one computer to run FlightCheck on an other computer.

Once you have deactivated FlightCheck, you can simply throw away the FlightCheck folder to remove the FlightCheck application from your computer.

Reactivating FlightCheck 6.7x after installing an update or re-downloading the application

Why or when would you need to reactivate FlightCheck?

When ever you replace the actual FlightCheck executable file you will usually need to reactivate FlightCheck. This most commonly occurs when you install a free updater for FlightCheck.

The reactivation process as described in this section **does not require you to re-enter your License ID.**

001 - FlightCheck shows as Unlicensed

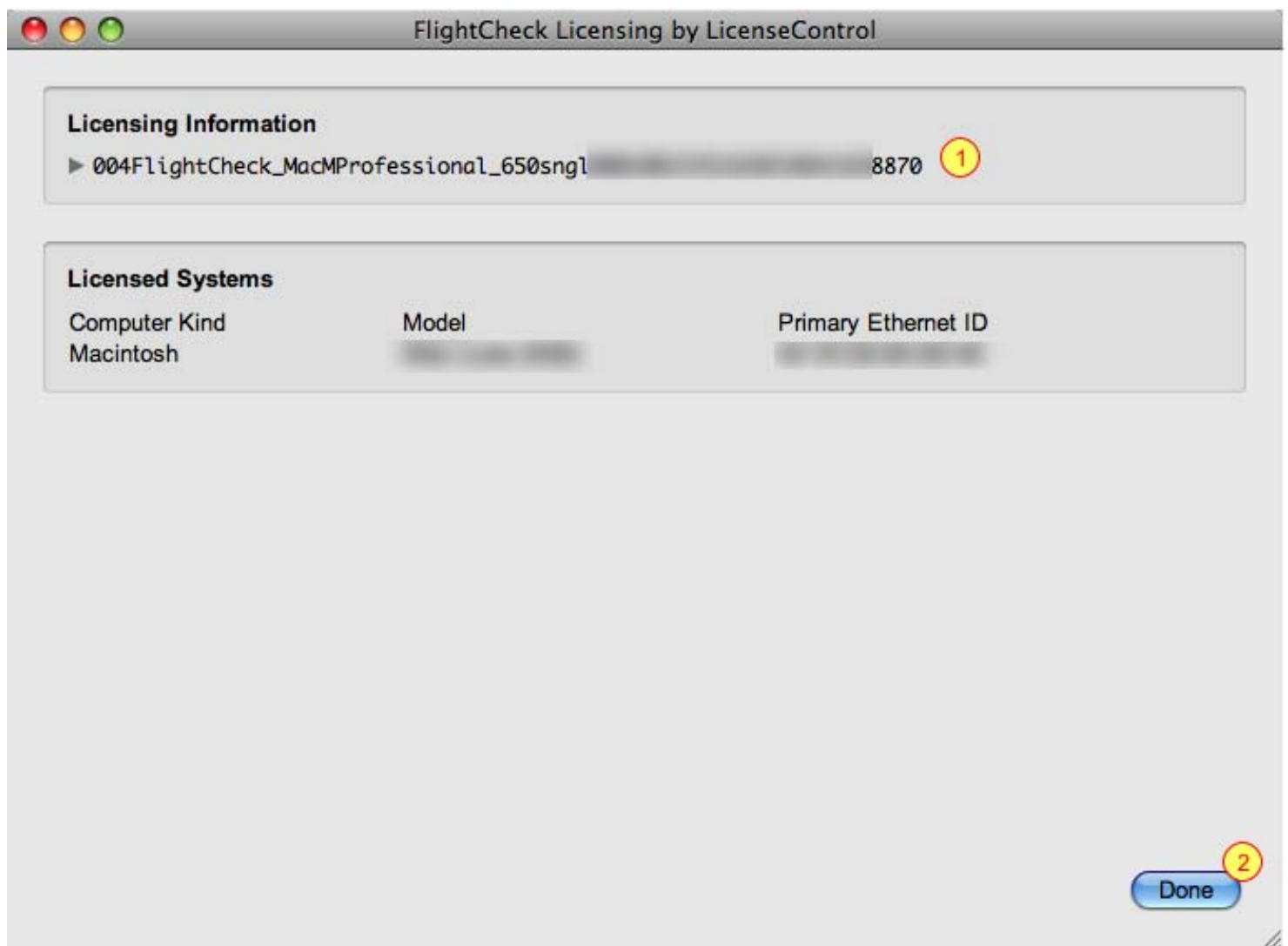


The most common reason that FlightCheck will show as Unlicensed is when you install an update and have not deactivated FlightCheck. So, if you install an update please follow the steps in this section to get up and running quickly.

If FlightCheck ever shows as **Unlicensed** and you feel that it should show as licensed, first check to see if a License ID has been stored for the copy of FlightCheck you are using.

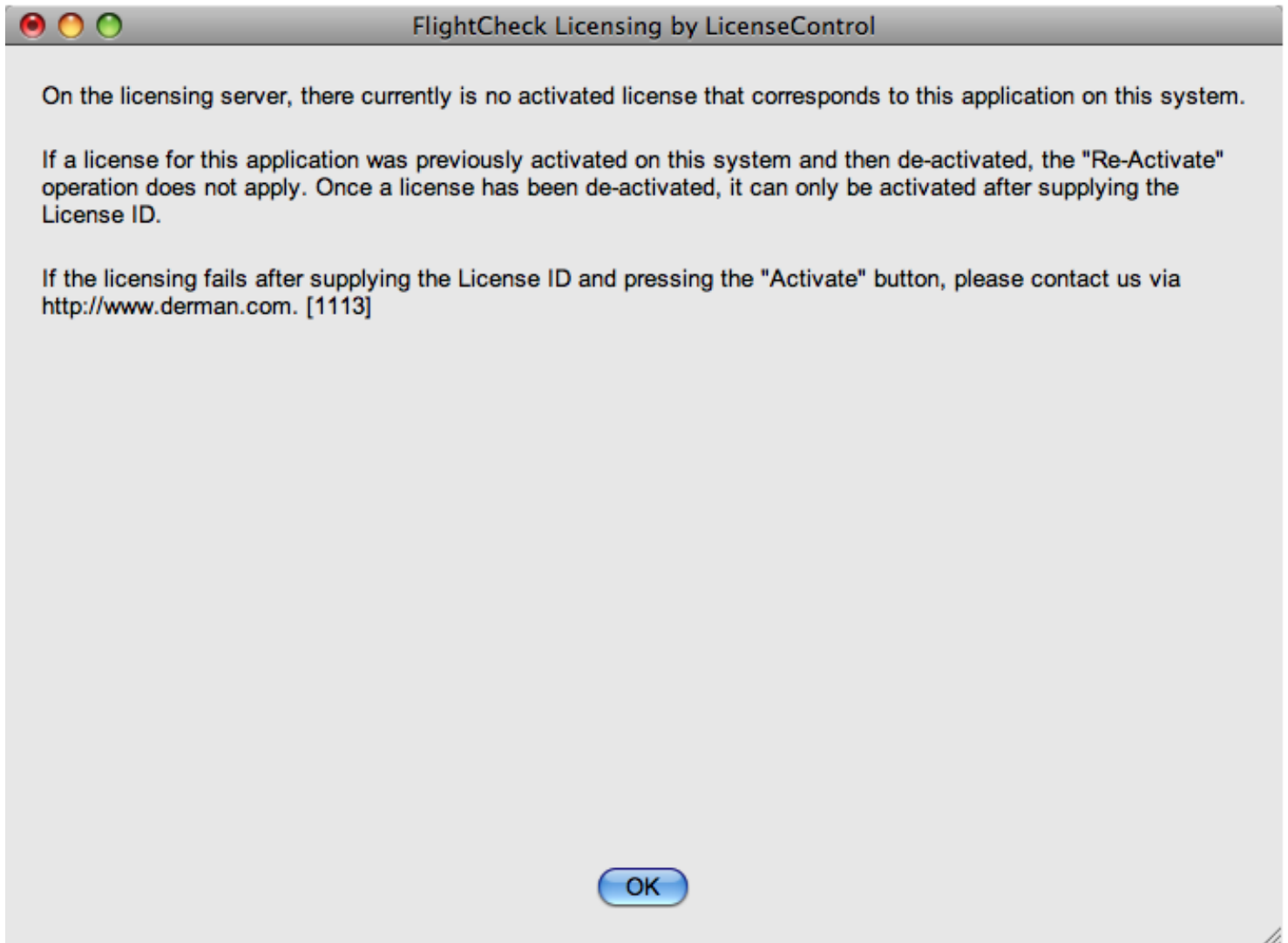
To do this select the **Show the Status of this Application's License ID** button (1) and then click on the Next button (2)

002 - You have a valid license to reactivate



If you have a License ID show up as shown above (1), then you can **reactivate** FlightCheck **without** having to re-enter your License ID. To do this, click on the Done button (2) to proceed.


003 - You do not have a valid License ID to reactivate



If you do not have a valid License ID to reactivate, you will see the above error screen after you run the **Show the Status of this Application's License ID** routine. At this point in order to reactivate FlightCheck you will need to re-enter your full License ID or the numeric portion of your License ID as described in the Activating FlightCheck 6.7x section of this manual.

004 - Reactivate if a License ID was found in step 002

FlightCheck Licensing by LicenseControl



FlightCheck Activation

License Status: **Unlicensed**

Powered by
**License
Control**



© 2003-2009
by Derman Enterprises Inc.

☐ Provide/Paste Only the Numeric Portion of the Licensing ID:


xxxFlightCheckxxxxxProfessional_675sngl

☐ Provide/Paste the Entire Licensing ID:

1 ☒ Find this Application's License and Activate It

☐ De-Activate this Application's License (*I'm Changing Systems*)

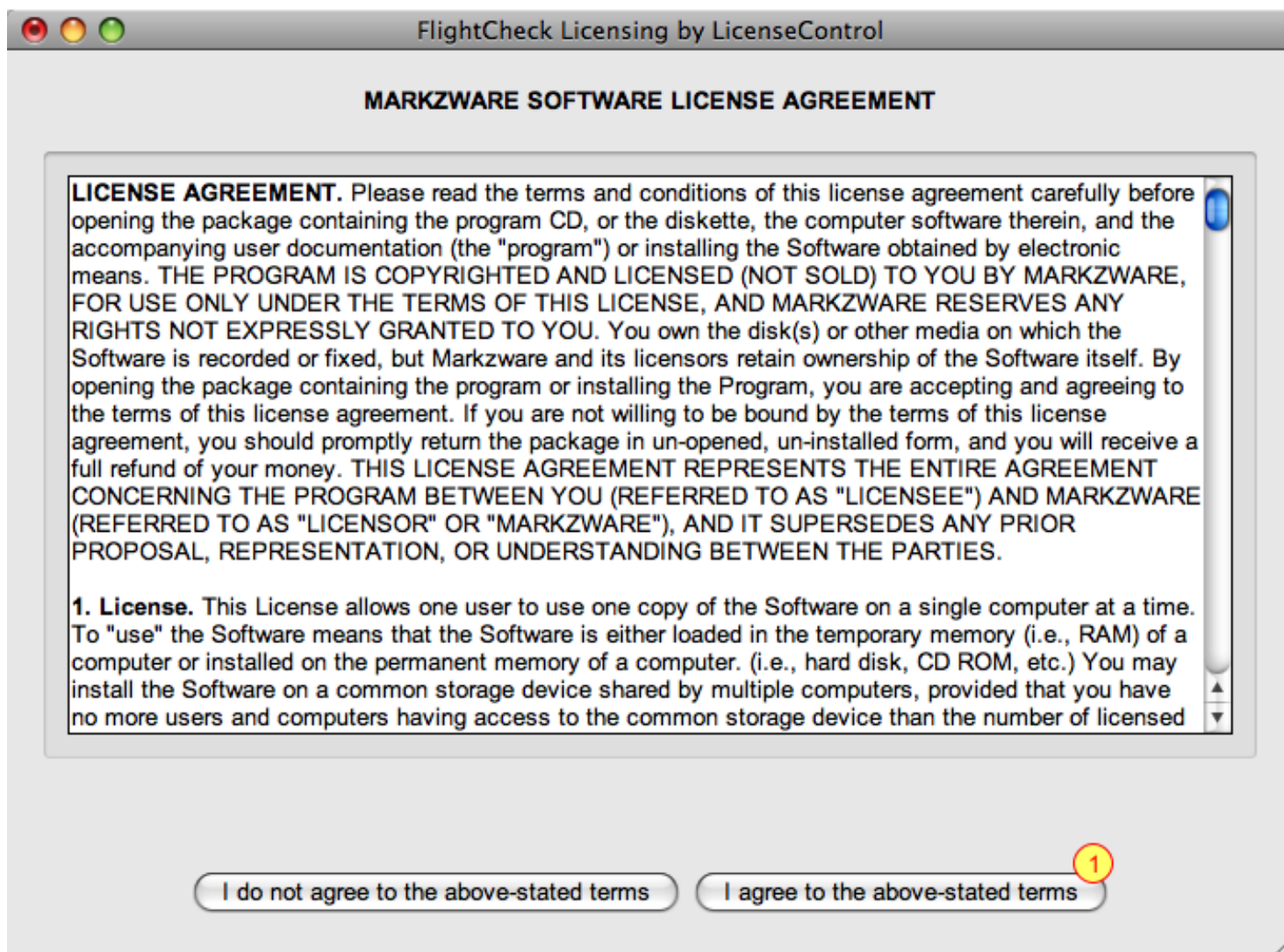
☐ Show the Status of this Application's License ID

[To purchase a full licensed version of FlightCheck click here.](#) 

2

If step 002 returned a License ID, then to reactivate select the **Find this Application's License and Activate It** radio button (1) and then click on the Next button (2) to proceed.

005 - Agree to the License Agreement



In order to re-activate FlightCheck you must agree with the terms of the License Agreement. To proceed click on the **I agree to the above stated terms** button (1).

006 - FlightCheck has been reactivated without entering your License ID again



Since LicenseControl found a valid License ID (as shown on step 002), you have now reactivated FlightCheck **without having to re-enter your License ID**. Click on the Finish button (1) to exit LicenseControl and begin using FlightCheck again.