

QUICKWRITE 2.00

Mobile Systems, Inc.



USER GUIDE

<http://www.mobi-systems.com/>

© Copyright Mobile Systems Inc, 2000-2002

All rights reserved. This manual and the programs referred to herein are copyrighted works of Mobile Systems, Inc.

The information in this document is a subject to change without notice.

Mobile Systems, Inc. accepts no liability for loss or consequential loss from misuse or any defect or failure of the programs howsoever arising.

© 2000-2002 Mobile Systems Inc. QuickWrite and QuickWrite logo are trademarks or registered trademarks of Mobile Systems, Inc. in the U.S. and/or other countries. All rights reserved.

3Com, the 3Com logo, Palm Computing and HotSync are registered trademarks, and Palm III, Palm IIIx, Palm V, the Palm III logo, the Palm IIIx logo, the Palm V logo and the Palm Computing platform logo are trademarks of Palm Computing, Inc, 3Com Corporation or its subsidiaries.

Acrobat and PDF are trademarks of Adobe. All other brands and product names may be trademarks or registered trademarks of their respective holders.

Version 2.00

March 2002

English

LICENSE AGREEMENT

***** Please read this entire agreement *****

This End-User License Agreement (the "Agreement") is a legal agreement between you ("Licensee"), the end-user, and Mobile Systems Inc. ("Mobile Systems") for the use of the QuickWrite software product ("Software"). By using this Software or any part of it, you are agreeing to be bound by the terms of this Agreement. If you do not agree to the terms of this Agreement do not install this Software.

LICENSE AND DISTRIBUTION

The evaluation copy of this Software is free of charge for unlimited period of time. You must pay the license fee and register your copy to continue to use the Software and remove the nag screen. Until you purchase and register the product you will not be able to access the additional database provided by Mobile Systems Inc.

The evaluation copy is fully functional except for the nag screen that slows the start up the more times you start the program. You're allowed to make as many copies of this evaluation version (in UNMODIFIED form) as you wish to distribute.

RESTRICTIONS

You may not nor permit anyone else to de-compile, reverse engineer, or disassemble, modify, or create derivative works based on the SOFTWARE or the documentation in whole or in part. You may not

use the Software for any commercial purpose or public display, performance, sale or rental. You may not use the Software to perform any unauthorized transfer of information (e.g. transfer of files in violation of a copyright) or for any illegal purpose.

No WARRANTIES

This software and any related documentation is provided "as is" without warranty of any kind.

Mobile Systems Inc. specifically disclaims all warranties, expressed or implied, including but not limited to implied warranties of fitness for any particular purpose and of merchantability.

LIMITATION OF LIABILITY

In no event will Mobile Systems Inc. be liable to you for any damages, including but not limited to any loss of data, lost profits, lost savings, commercial damage or other incidental or consequential damages arising out of the use or inability to use this program directly or indirectly, or for any claim by any other party.

GETTING STARTED

WELCOME TO QUICKWRITE

QuickWrite is a Palm extension to help you improve text input on your handheld device. QuickWrite has both keyboard and graffiti options. It is very useful supplement with which information is entered easier and more accurately.

QuickWrite speeds up your text entries by predicting the word you are typing from the letters you have entered.

It is vocabulary-based and allows you to add your own words.

QuickWrite presents some innovative features:

- Choice of 5 types of keyboards (the funady one - keys in hexagonal shape - is completely unique!);
- Auto repeat keyboard property; a variety of vocabularies to choose from;
- Intelligent exchange of words where case is preserved by default;
- Superb compression algorithm allowing fast search in low space;

WHAT IS NEW IN QUICKWRITE 2.00

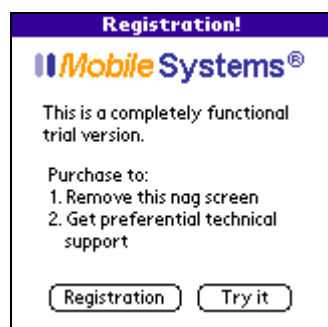
QuickWrite 2.00 is fully **compatible** with **Sony** and **Handera** Palm devices. A great new feature is the **memory cards support**.

Default vocabulary databases in all 5 supported languages are available in the unregistered copies of the product. You can install whichever you want and you can switch between them without any limitations.

How To ORDER QUICKWRITE

QuickWrite is a downloadable shareware product available for free evaluation or registration (for only \$19.95) at our home site:

www.mobi-systems.com



UPGRADING FROM QUICKWRITE 1.xx TO QUICKWRITE 2.00

Our current customers, that already have purchased QuickWrite 1.xx are given the chance to upgrade to the new version at the preferential price of only \$9.95.

SYSTEMS REQUIREMENTS

Palm OS 3.1 or higher.

INSTALLATION AND UN-

INSTALLATION

INSTALLING QUICKWRITE USING A WINDOWS

COMPUTER

1. Uninstall from you device any other language versions of this program.
2. Download QuickWrite (.zip) into the Add-on folder in your Palm Desktop directory on your computer and expand the .zip file.
3. Double-click the Palm Desktop icon on your desktop.
4. Click Install. (Tip: You can also access the Install Tool dialog by clicking on the .prc file).
5. From the User pop-up menu, select your user name.
6. Click Add.
7. When the Open dialog box appears, select QuickWrite.prc and the .pdb file with the vocabulary database, then click Open. If you want to download and install the keyboard hack, please also select QuickWrite Hack.prc, before clicking Open.

Note! QuickWrite Hack will only work if you have a HackMaster installed on your Palm. In our distribution pack we have included an alternative - X-Master.prc. To download and buy HackMaster, go to www.daggerware.com.

8. Click Done to close the Install Tool window.
9. Perform a HotSync operation to install QuickWrite.

INSTALLING QUICKWRITE USING A MACINTOSH

1. Uninstall from you device any other language versions of this program.
2. Download QuickWrite (.zip) into the Add-on folder in your Palm Desktop directory on your computer and expand the .zip file.
3. Double-click the HotSync Manager icon in the Palm folder.
4. From the HotSync menu, choose Install Handheld Files.
5. From the User pop-up menu, select your user name.
6. Click Add to List.
7. Select the Add-on folder from the popup menu.
8. Select QuickWrite.prc QuickWrite, the pdb file with the vocabulary database and Hack.prc (if you want to install the hack).

Note! QuickWrite Hack will only work if you have a HackMaster installed on your Palm. In our distribution pack we have included an alternative - X-Master.prc. To download and buy HackMaster, go to www.daggerware.com .

9. Click Add File to add QuickWrite to the Install Handheld Files List.
10. Close the Install Handheld Files window.
11. Perform a HotSync operation to install QuickWrite on your Palm.

UNINSTALLING QUICKWRITE

1. From your Palm's main Application Launcher, tap the Menu button and select Delete from the drop down list.
2. Tap QuickWrite and then tap Delete.

3. Tap Yes to confirm you wish to remove the program.

QuickWrite should no longer appear on your screen.

NB! You will have to remove some of the database manually.

Vocabularies have been designed for use with several applications and are therefore impossible to delete automatically.

QUICKWRITE HACK

QuickWrite Hack will only work if you have a HackMaster, X-master, TealMaster or other alternative installed on your Palm.

These are system extension managers that utilize an open standard for separately-downloadable "Hack" files, and provides the means of managing them.

To activate QuickWrite Hack you must first start the HackMaster and then switch on to QuickWrite Hack. It converts QuickWrite to a HackMaster extension. QuickWrite on its own is a fully functional program but not a HackMaster extension. In our distribution packs we have included the alternative **X-Master.prc**.

There are three alternative ways for starting QuickWrite through the Hack – from the ABC corner in the graffiti area, from the 123 corner or when you tap either of the two.

REGISTRATION

Why Register

Registering your QuickWrite will remove the annoying nag screen from your device.

It will give you an access to all available vocabularies and last but not least - guarantee you preferential technical support.

How To Register

QuickWrite's shareware version is completely functional, except that the more times you start it, the longer the nag screen will keep active. When purchasing QuickWrite, enter your Customer ID or RegCode in the order form.

Upon receipt of this number, your **Unlock Key** will be e-mailed to you.

Enter the Unlock Key in your program's registration screen.

Where To Find Your Customer ID/RegCode

Go to **Menu|Options|Registration** of the program and you will find it on the registration screen.

The Unlock Key - What, Where And How

The Unlock Key is a combination of 4-4 letters and numbers (for example: **34C5-7B9E**) that is received by e-mail after you have submitted your **Customer ID/RegCode**. To enter your Unlock key:

1. Go to **Menu|Options|Registration**.
2. Type in your Unlock Key in the space provided in your QuickWrite Registration screen.



QuickWrite Registration ⓘ

Pilot User Name: John
Database: English Default
Customer ID:
GGHY-HNZE-IDYG-GZVY

Please Enter Unlock Key:

.....

For technical support, email
support@mobi-systems.com

3. Tap on **OK** to continue or **Cancel** to abort the entry.

Alternatively, follow the Registration screen instructions that appear upon starting QuickWrite - i.e. tap on **Register** and proceed to **QuickWrite Registration** screen to type in your Unlock Key.

USER GUIDE

WHAT QUICKWRITE CAN DO FOR YOU

QuickWrite is an application which speeds up the typing process and also is a successful substitute of the system keyboard. Such programs are well-known as Keyboard Hacks. QuickWrite can be used like any other keyboard hack and it is easily started directly within any other Palm application. See chapter “QuickWrite Hack”.

QuickWrite is also available for use as a standalone application. In order to do so, you should be well aware of the steps described below.

1. Select the text you wish to move or copy to another application.
2. Tap **Cut** or **Copy** from the **Edit Menu**.
3. Enter the destination application.
4. Tap **Paste**.

NB! (QuickWrite can automatically perform steps 1 and 2 if you decide to select all the text in the edit field - see **Copy Field To Clipboard On Exit**)

Fast transfer of data from other applications to QuickWrite for editing and modifications.

1. Select the text you wish to edit or modify.
2. Tap **Cut** or **Copy** from the **Edit Menu**.
3. Switch to QuickWrite.
4. Tap **Paste**.

NB! (QuickWrite can spare you the last step - see **Paste Clipboard To Field On Start**)

However much more faster and practical is to use the **QuickWrite Hack**. To do so, please make sure that you have HackMaster installed. Alternatively you can install X-Master, which is included in the installation package.

QUICKWRITE HACK

ACTIVATE QUICKWRITE HACK

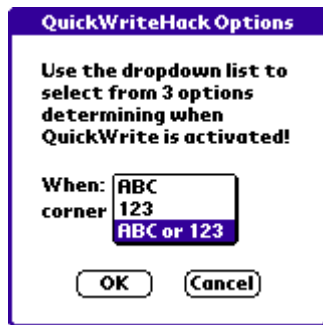
From your Main Applications Launcher go to HackMaster|QuickWrite Hack. Enable QuickWrite Hack check box to activate the Hack. Tap the plus on the right to proceed to QuickWrite Hack options screen and set preferences



SET PREFERENCES

You can choose among 3 options as to when QuickWrite will be activated through its Hack. In the QuickWrite Hack Options screen use the dropdown list to select the preferred option. To start QuickWrite from the ABC corner in the graffiti area choose the option ABC. In this case you will still be able to activate the system keyboard or another keyboard hack from the 123 corner. Respectively, if you

choose the 123 option QuickWrite will start from the 123 corner.
Select option ABC or 123 to start QuickWrite by tapping in either corner. Tap OK to confirm settings or Cancel to abort the action.



Note! By default QuickWrite is activated when either corner in the graffiti area is tapped.

USING QUICKWRITE

THE EDIT FIELD

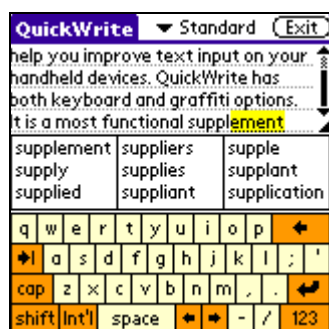
Enter Text In The Edit Field

1. On the keyboard tap the letter with which the word you wish to type begins. A list of words appears in the word field and the best suggestion is displayed directly in the edit field.
2. If the word displayed in the edit field is the word you wish to type, tap somewhere in the edit field or use one of the confirmation options.
(See **Enhance The Proper Choice of Words**)
3. If the word displayed in the edit field is not the word you wish to type, check the Word List below the field. If your word is there, tap it.
4. If you do not see the word you wish to type on this screen, tap its next letter on the keyboard.
5. Repeat steps 2, 3, and 4 until the desired word is displayed.
6. Continue with the next word (QuickWrite will automatically separate words with spaces unless the auto insert space option is disabled).



Manage Longer Text Entries

1. When you reach the end of the last line, continue typing. QuickWrite automatically adds new lines to the edit field.
2. A **scroll bar** will appear on the right side of the edit field.
3. Use the scroll bar to scroll through your document.



Resize Your Edit Field

If you wish to resize your edit field - remove lines or add more - you can use the **hook** at the bottom right corner of the Edit field. Drag the **hook** up to extend the Word List; drag it down and the Word List will be reduced in size, eventually hide from the screen freeing more writing space.

NB! There are certain limitations regarding the size of the edit field:

With keyboard option off and the Word List hidden - the maximum number of lines in the edit field is 12.

With keyboard option on and the Word List on - the minimum number of lines in the edit field is 3.



Cut Text

1. Select the text you wish to move.
2. Go to **Menu|Edit** and tap **Cut**.

Alternatively - draw a descending line in the Graffiti writing area; when the highlighted word **command** appears at the bottom left corner of the keyboard - write the Graffiti shortcut for the command (see the Edit popup list opposite the command).

Your text is automatically stored on the clipboard.

Copy Text

1. Select the text you wish to copy.
2. Go to **Menu|Edit** and tap **Copy**.

Alternatively - draw a descending line in the Graffiti writing area; when the highlighted word **command** appears at the bottom left corner of

the keyboard - write the Graffiti shortcut for the command (see the Edit popup list opposite the command).

Your text is automatically stored on the clipboard.

Copy Field To Clipboard On Exit

QuickWrite can be set to automatically copy the contents of the edit field upon exiting the program so that they are ready to paste upon entering another application.

To activate this option:

Go to **Menu|Options|Preferences** and select the **Copy field to clipboard on exit** check box.

Tap **OK** to confirm or **Cancel** to return to the original settings.

Paste Text

1. Make sure the cursor is in the edit field in the location where you want to insert the text.

2. Go to **Menu|Edit** and tap **Paste**.

Alternatively - draw a descending line in the Graffiti writing area; when the highlighted word **command** appears at the bottom left corner of the keyboard - write the Graffiti shortcut for the command (see the Edit popup list opposite the command).

Paste Clipboard To Field On Start

QuickWrite can be set to automatically paste clipboard's contents upon starting the program. Use this feature for faster entering and editing your text.

To activate this option:

Go to **Menu|Options|Preferences** and select the **Paste clipboard to field on start** check box.

Tap **OK** to confirm or **Cancel** to return to the original settings.

The Undo Command

You may wish to reverse a cut or paste action and restore your text to its original state. You can then use the **Undo** command:

Go to **Menu|Edit** and tap **Undo**.

Alternatively - draw a descending line in the Graffiti writing area; when the highlighted word **command** appears at the bottom left corner of the keyboard - write the Graffiti shortcut for the command (see the Edit popup list opposite the command).

Select All The Text

If you wish to perform an operation with all the contents of the edit field:

Go to **Menu|Edit** and tap **Select All**.

Alternatively - draw a descending line in the Graffiti writing area; when the highlighted word **command** appears at the bottom left corner of

the keyboard - write the Graffiti shortcut for the command (see the Edit popup list opposite the command).

Delete All The Text

To remove/delete all entered data in the edit field:

Go to **Menu|Edit** and tap **Delete All**.

Alternatively - draw a descending line in the Graffiti writing area; when the highlighted word **command** appears at the bottom left corner of the keyboard - write the Graffiti shortcut for the command (see the Edit popup list opposite the command).

Undo Typing Mistake

To delete the wrongly typed character or string of characters, you may also use the **backspace key** on the keyboard.

Change The Font Style

You can change the font style while typing from bold to regular and vice versa.

1. Select the text you wish to change.
2. Go to **Menu|Options|Preferences** and tap **Edit Field Font** to select the box with the preferred font style.

Tap **OK** to confirm the changes or **Cancel** to return to the initial settings.

Handwrite With QuickWrite

If you prefer to handwrite rather than tap the letters, you can always use QuickWrite's Graffiti option:

1. Go to **Menu|Edit** and tap **Graffiti Help** to get assistance with writing letters, numbers and symbols in the Graffiti writing area.
- Tap the highlighted arrow at the bottom right part of the screen to move forward and backwards
 - Alternatively, tap **Done** to quit the screen

2. You can change the keyboard option to **None**, by selecting it from the popup list in the top right corner of QuickWrite's screen

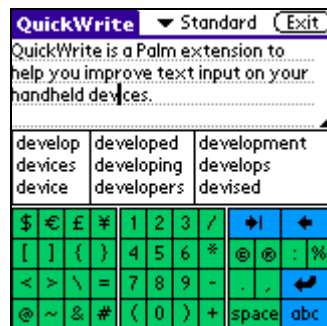
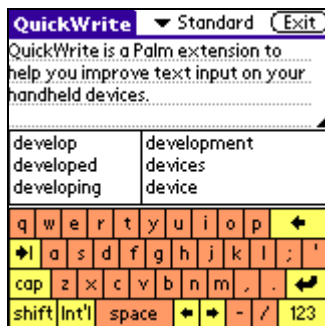
KEYBOARDS

Types Of Keyboards

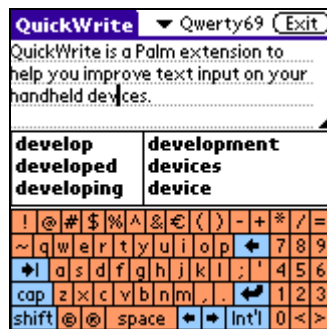
A unique innovative feature of QuickWrite is the choice of 5 different keyboards that allow you to easily type in the text you need.

For Handera devices Funady keyboard layout is disabled. It is also unavailable when QuickWrite is being started through the Hack.

- The **Standard** keyboard - similar to the keyboard on your Palm; to switch to the numeric keypad - tap the 123 key on the keyboard (alternatively - tap 123 in the Graffiti writing area); to switch to International characters - tap **Int'l**.



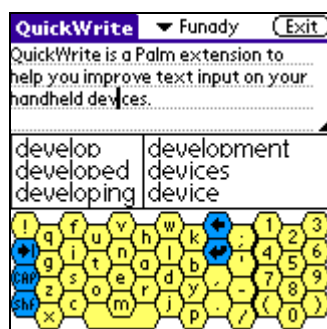
- **Qwerty69** - handy layout with numbers and letters; to switch to International characters - tap **Int'l**.



- **Dvorak** - tap 123 to switch to the numeric keypad (alternatively - tap 123 in the Graffiti writing area); the Int'l key will display the international characters.

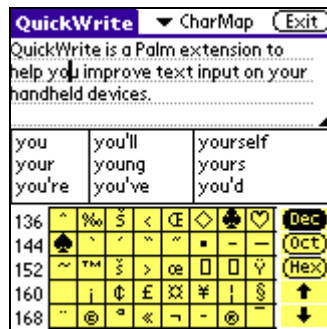


- **Funady** - the hexagon shaped keys are arranged so as to minimize pen travel; you can practically write by moving only the fingers holding the pen; excellent for one-hand typing.



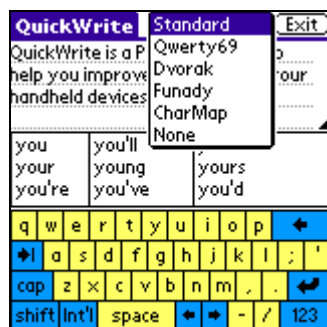
- **Character Map** - presents symbols and their ASCII code in the octal, decimal and hexadecimal number systems. Tap the respective

radio button to switch to the desired number system. Use the arrows to view next/previous set of symbols.



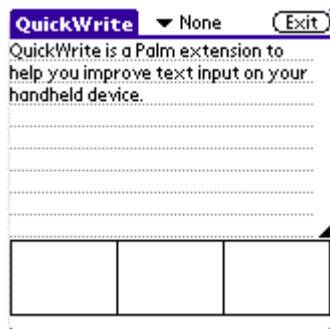
Choose Your Keyboard

On the main QuickWrite's screen go to the popup list at the top left corner and select the keyboard you wish to use.



Switch Off The Keyboard Option

On the main QuickWrite's screen go to the popup list at the top left corner and select **None**.



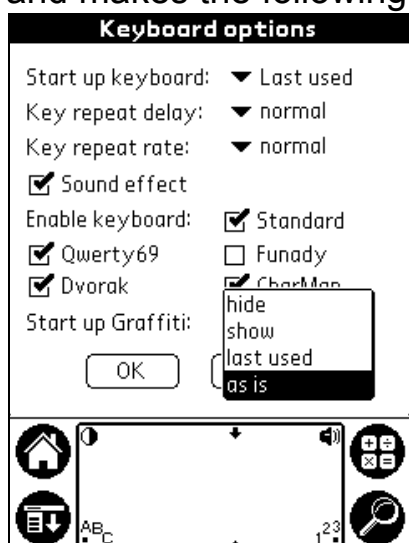
Choose Your Startup Keyboard

This option allows you to select the keyboard you wish to use upon starting QuickWrite. Apart from choosing by name, you can also select **Last Used** (the last used keyboard will be displayed) or **None** (the keyboard option will be disabled).

1. Go to **Menu|Options** and tap **Keyboard Options**.
2. From the Start up keyboard popup list choose the preferred option. Tap **OK** to confirm or **Cancel** to return to the original settings.

Choose Your Startup Graffiti Mode

QuickWrite automatically detects if your Palm device is a **Handera** and makes the following features available.



As Handera is a monochrome device, there is no opportunity to change colors. This feature is replaced by several options for defining the start-up mode of your Graffiti area.

- Hide – by default your Graffiti area is hidden on QuickWrite start-up
- Show – Graffiti area is visible on start-up
- Last used – remembers the last used position of the Graffiti area and uses it again
- As is – Graffiti area position is as it stands

Customize Your Keyboard Performance

1. Go to **Menu|Options** and tap **Keyboard Options**.
2. Use the **Key repeat delay** and the **Key repeat rate** popup lists to select your preferred options.

- Key Repeat Delay

This option allows you to adjust how much time elapses before characters repeat when you hold down a key. Choose from the popup list - fastest, fast, normal, slow, and slowest.

Tap **OK** to confirm or **Cancel** to return to the original settings.

- Key Repeat Rate

This option allows you to adjust how quickly characters repeat when you hold down a key. Choose from the popup list - fastest, fast, normal, slow, and slowest.

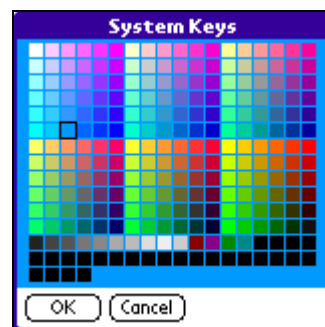
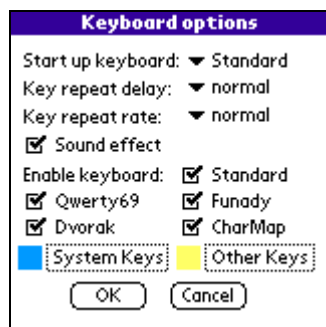
Tap **OK** to confirm or **Cancel** to return to the original settings.

Color

QuickWrite automatically detects if your Palm device is color and makes the following features available.

This option allows you to add color to your keyboard.

1. Go to **Menu|Options** and tap **Keyboard Options**.
2. Tap **Systems Keys** button and choose a color for your system keys from the color picker. Tap **OK** to confirm or **Cancel** to abort the action. Repeat these steps to add color to the rest of your keys, too.



Enable Keyboards

You can select the keyboards you wish to keep active while using your Palm. As a result, they will appear in the popup list at the top right corner of QuickWrite's screen. To enable your keyboards:

1. Go to **Menu|Options** and tap **Keyboard Options**.
2. Select the check boxes before the keyboards you wish to keep active.

Tap **OK** to confirm or **Cancel** to return to the original settings.

WORD LIST

Word List has been sorted **ascending/descending by frequency**, **by alphabetical order** and **by length**.

1. To sort words in the Word List **by frequency**, **by alphabetical order** or **by length** go to: **Menu|Options** and tap **Word List** to select the preferred option from the popup list.

- **by frequency** - QuickWrite will suggest the most commonly used words starting with the letters you have entered;
- **by alphabetical order** - QuickWrite will suggest words starting with the letters you have entered, arranged in alphabetical order;
- **by length** - QuickWrite will suggest words starting with the letters you have entered arranged by length.

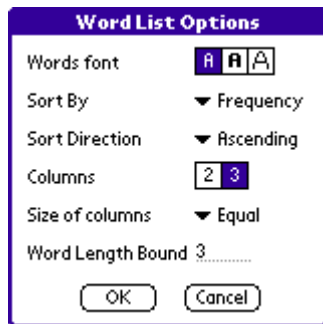
Tap **OK** to confirm the changes or **Cancel** to return to the initial settings.

2. To sort words in the Word List **by direction**, go to **Menu|Options** and tap **Word List** to select the preferred option from the popup list.

- **ascending** - words are displayed in ascending order
- **descending** - words are displayed in descending order

NB! With the by frequency option the value of sort by direction is ignored and words are always arranged in ascending order.

Tap **OK** to confirm the changes or **Cancel** to return to the original setting.



Change The Font Style In The Word List

You can change the font style of the words in the Word List.

Go to **Menu|Options** and tap **Word List** to select the box with the preferred font style - **regular**, **bold** or **large**.

Tap **OK** to confirm the changes or **Cancel** to return to the initial settings.

Word Lists are displayed in 2 or 3 columns of different size. Change of number or size of columns will respectively change the number of words appearing in the Word List.

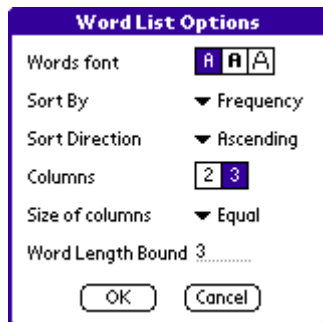
Change The Number Of Columns

Go to Menu|Options and tap Word List to select the box with the preferred number - 2 or 3.



Change The Width Of Columns

Go to **Menu|Options** and tap **Word List** to select the preferred option from the popup list.



There are **three** options available - **equal**, **slow grow** and **fast grow**.
- **equal** - words are displayed in columns of equal size. Its drawback is that longer words (that need more space than the width of the column) may never get displayed.



- **slow grow** and **fast grow** - these have been designed to remove the above-mentioned flaw.



Set The Word Length Bound

Go to **Menu|Options** and tap **Word List**. In the **Word List Options** form go to Word Length Bound. Type the number for the minimum letters of which the words appearing in the Word List should consist.

Change The Height Of Columns

Use the **hook**. You can find it at the top right corner of the Word List. Drag the **hook** up and down to increase/decrease the number of words displayed (respectively, adjust the number of lines in the edit field).

NB! There are certain limitations regarding the height of columns:

With keyboard option on - the maximum height is 4 lines.

With keyboard option off - the maximum height is 8 lines.

Of course, you can use the **hook** to completely hide the Word List from the screen - reducing the height of columns you can eventually disable the Word List display option.



Auto Insert Space

QuickWrite can be set to automatically insert spaces after the word you have selected from the Word List.

Go to **Menu|Options|Preferences** and tap **Add space after word** to select the check box.

Tap **OK** to confirm or **Cancel** to return to the original settings.

Enhance The Proper Choice Of Words

QuickWrite predicts the word you wish to type from the letters you have already entered. By default the best alternative, i.e. the first word from the Word List, will automatically appear in the edit field. You can either confirm QuickWrite's choice, or disable this option.

To disable this option:

Go to **Menu|Options|Preferences** and tap **Add best word in edit field** to disable the check box.

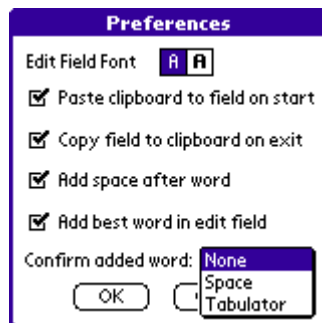
To confirm the suggested word, you can either tap somewhere aside in the edit field OR alternatively, use a **key**. There are two key options:

- You can use **space** to confirm the word. The drawback of this option is that it does not allow you to enter words and abbreviations shorter than the ones included in the active vocabulary. For example: if you are trying to enter "prep" or "ex", the suggested word in the edit field is longer and you have to delete all the unnecessary letters to get the target word.

- We have provided an alternative in order to overcome this disadvantage - the **tab** key - tab is used less often and is therefore less likely to slow your work

How To Set Your Confirmation Options

Go to **Menu|Options|Preferences** and tap **Confirm added word** to select from the popup list the preferred option (**none**, **space**, **tab**)
Tap **OK** to continue or **Cancel** to return to the original settings.



VOCABULARY ADMINISTRATION

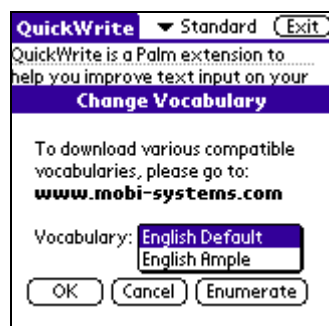
QuickWrite 2.00 has been designed to automatically detect the location of any vocabulary databases on your Palm device, no matter whether they are on the device itself or on a memory card.

QuickWrite 2.00 will automatically search the RAM for default vocabulary databases when you start it for the first time.

CHANGE THE ACTIVE VOCABULARY

Various vocabularies, specially designed for QuickWrite, can be easily downloaded from <http://www.mobi-systems.com/>. Once you have installed a certain vocabulary on your Palm device, QuickWrite will automatically recognize and activate it.

1. Go to **Menu|Vocabulary** and tap **Change...**
2. From the popup list select the vocabulary you wish to use.
3. Tap **OK** to continue or **Cancel** to return to the initial settings.



The **Enumerate** button gives you the chance to search for any moved or post-installed vocabulary databases.

You are given the opportunity to specify which location to be searched for vocabularies. You will get the following screen:

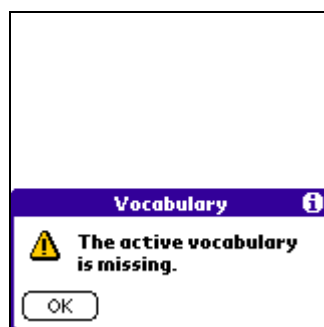


- RAM – The search is enforced only within the internal memory of your Palm device.
- Dir – This will search in the "\PALM\Launcher\MSTextEntry" directory of all installed memory cards. Placing the vocabularies in this directory is recommended.
- Everywhere – Searches all directories of all additionally installed memory cards. This operation usually takes several minutes if used with a large memory card.

Note: If you tap the "Dir" button, this also includes a RAM search. If you tap the "Everywhere" button, the procedure includes RAM search and "\PALM\Launcher\MSTextEntry" directory search.

In case the program does not find any vocabularies you will get the following message and you will need to check if you have installed the necessary **.pdb** files.

If you try to activate a vocabulary database that you have moved or deleted (you unplugged the memory card that it used to be installed on) for some reason, you will get the following *alert*:



ADD A WORD TO THE VOCABULARY

This option allows you to add words to the active vocabulary.

1. Enter the word and select it.
2. Go to **Menu|Vocabulary** and tap **Add word**.
3. A message will appear: **Do you want to add the word "xxx" to vocabulary?**

Tap **YES** if you wish to continue or **NO** to quit the action.

NB! The error message "**An error occurred while adding the word**" signifies that there has been an error while processing the data OR that you do not have an active vocabulary. Tap **OK** to continue.

The warning message "**The word exists in the vocabulary**" means the word you are trying to add is included in the active vocabulary. Tap **OK** to continue.

DELETE A WORD FROM THE VOCABULARY

This command enables you to remove words from the active vocabulary.

1. Select the word you wish to delete
2. Go to **Menu|Vocabulary** and tap **Delete Word**.
3. A message will appear: **Do you want to delete the word "xxx" from vocabulary?** Tap **YES** if you wish to continue or **NO** to quit the action.

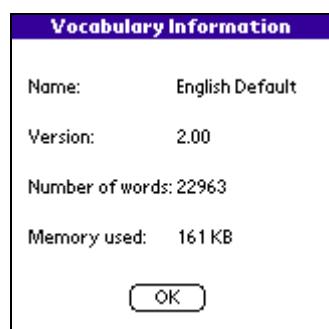
NB! The error messages "**An error occurred while deleting the word**" signifies that there has been an error while processing the data OR that you do not have an active vocabulary.
Tap **OK** to continue.

The warning message "**Word not found in the vocabulary**" means the word you are trying to delete is not included in the active vocabulary.
Tap **OK** to continue.

INFORMATION...

Vocabulary Information features some basic information about the vocabulary installed: name and version, date of creation and last modification, number of words as well as memory space used.
To exit this form, tap **OK**.

Example:



The screenshot shows a dialog box titled "Vocabulary Information" with a purple header. It contains the following text:

Name:	English Default
Version:	2.00
Number of words:	22963
Memory used:	161 KB

At the bottom center of the dialog box is an "OK" button.

VOCABULARY DATABASES

ABOUT

Mobile Systems' vocabulary databases have been developed to meet the requirements of a wide range of users. Their entries have been selected and compiled after thorough analyses of various texts and speech patterns.

Vocabularies can be used in two ways - at the data entry stage to indicate the word the user is looking for while entering the text and as an instant spell checking facility that provides improved accuracy of the text input.

All vocabularies are empowered by a superb compression algorithm that allows fast search in low space.

How To ORDER

You can purchase the vocabularies at our home site:

www.mobi-systems.com



A screenshot of a 'Database Registration!' dialog box. The box has a purple title bar with a white information icon. The text inside is as follows:

Database Registration! ⓘ

Pilot User Name: John
Database: English Default
Customer ID:
G8HY-HN2E-IDYG-9FRD
Please Enter Unlock Key:

.....

OK Cancel

For technical support, email
support@mobi-systems.com

Fill out the order form on the respective web site to register your product.

NB! Do not forget to enter your Customer ID/RegCode.

WHY REGISTER

Registering your vocabulary will remove the annoying nag screen from your device.

HOW TO REGISTER

In order to register a vocabulary you must have already purchased and registered QuickWrite. This will enable the Change the Active Vocabulary feature.

Enable as active the vocabulary you wish to register, see [Change the Active Vocabulary](#) in QuickWrite's User Guide.

Enter your Customer ID or RegCode in the order form.

Upon receipt of this number, your Unlock Key will be e-mailed to you.

Enter the Unlock Key in your program's registration screen.

WHERE TO FIND YOUR CUSTOMER

ID/REGCODE

In order to register a vocabulary you must have already purchased and registered QuickWrite.

Enable as active the vocabulary you wish to register, see **Change the Active Vocabulary** in QuickWrite's User Guide.

Go to **Menu|Options|Registration** of the program and you will find your **Customer ID/RegCode** on the registration screen.

THE UNLOCK KEY - WHAT, WHERE AND How

The Unlock Key is a combination of 4-4 letters and numbers (for example: 34C5-7B9E) that is received by e-mail after you have submitted your Customer ID/RegCode. To enter your Unlock key:

- 1.Go to **Menu|Options|Registration**.
- 2.Type in your Unlock Key in the space provided in your Database Registration screen.