



Copyright © 2005 Paragon Software (Smart Handheld Devices Division)

***Multilingual dictionary
"SlovoEd" 2005 for Palm OS***

Dear Valuable Customer!
Thank you for using our software.
It is your interest that inspires us to develop innovative solutions for mobile devices.

Contents

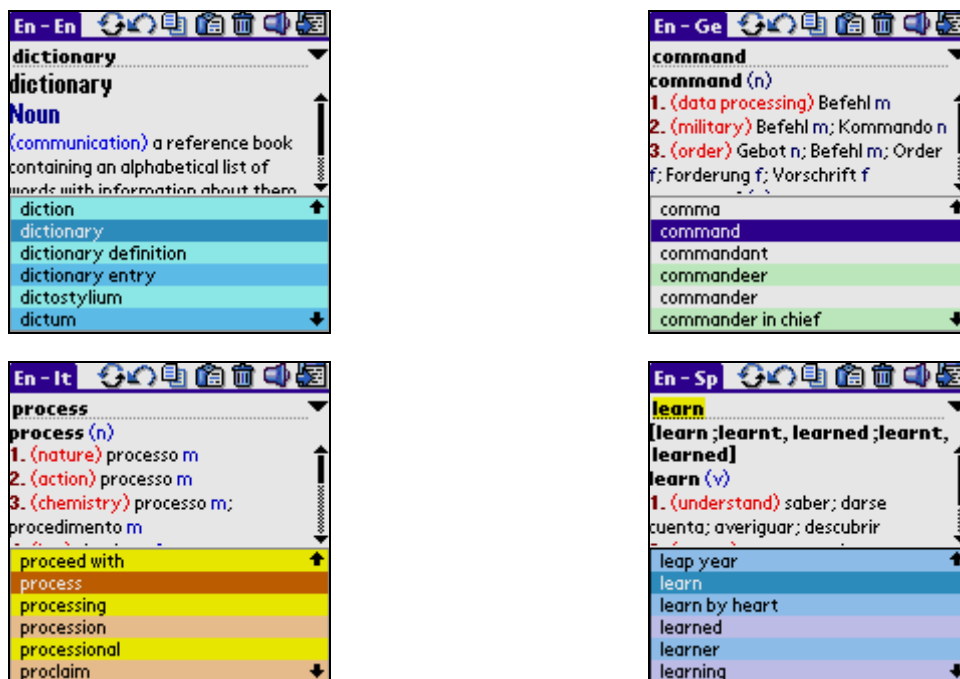
About "SlovoEd"	4
What is new in "SlovoEd" 2005	4
Main features of the "SlovoEd" program.....	5
Language versions of "SlovoEd"	6
Demo-version limitations and registration	6
Installation	7
How to use "SlovoEd"	9
Getting Started	9
Input methods	10
Program Interface	11
Dictionary menu	12
Menu in the main window.....	12
Dictionary	12
Edit.....	14
Options.....	14
Common options	14
Interface language	15
Resident options	15
View options	16
Word of the Day options	16
Menu in the full screen mode.....	17
View.....	17
Edit.....	17
Resident mode.....	17
Resident. Interface elements.	17
Resident menu	19
Dictionary:	19
How "SlovoEd" can help you to learn new words	19
Table of irregular verbs.....	19
Adding Flash Cards and Flash Cards Quiz	20
Word of the Day	21
How to create your own dictionary	21
Adding/Editing entries	21

"SlovoEd Studio"	22
Relocation of the dictionary files	24
Moving dictionary databases to an extension card	24
Moving the dictionary engine with the dictionary databases to the extension card.....	24
Uninstallation	25
Useful information	26
Customer Support Service	26
How to get the registration code	26
Appendix: Sound module. Installation and usage.....	28
Sound Module. Demo-version limitations and registration.	28
Sound module. Installation	28
Sound module. How to use it.....	30
Sound in the main window.....	30
Sound in the dictionary entry	30
Sound in the Resident.....	30
Sound Module. Uninstallation.	30

About "SlovoEd"

"SlovoEd" is a well-known set of products developed by [Paragon Software \(SHDD\)](#) for such popular mobile operating systems as Palm OS, Pocket PC/ Windows Mobile, Windows Smartphone and Symbian OS. High data compression ratio for dictionaries and high retrieval rate are available thanks to the special technology developed by Paragon Software (SHDD). Our software is absolutely user friendly due to the handy user interface and the wide range of tools which are provided by the dictionary engine: you can look up words and view wordlists as well as use your own word databases created with our special desktop dictionary compiler.

This manual describes "SlovoEd" 2005 for mobile devices that work under the Palm OS operating system (versions 4.0 and higher).



What is new in "SlovoEd" 2005

We develop our dictionaries according to users' needs and the constantly growing functionality of the mobile devices. Several vital functions have appeared in "SlovoEd" 2005 for Palm OS, making your work more comfortable. We develop our dictionaries according to users' needs and the constantly growing functionality of the mobile devices. Several vital functions have appeared in "SlovoEd" 2005 for Palm OS, making your work more comfortable:

The new version of "SlovoEd" has more language learning functions:

- A table of irregular verbs with several sorting options is now available (only for English language).
Knowing only one form of the verb you will be able to find the others quickly. Several sorting possibilities will help to find the verb form you need.
- Special word learning method

You can save certain words to Flash Cards and then take a Flash Cards Quiz to check your knowledge of the new vocabulary.

Other new features include:

- **Sound Module**
You can listen to the pronunciation of a word – provided that an appropriate Sound Module is installed (see **"Sound module. Installation"**).
- **ability to select one of the available interface languages**
You can change the interface language at any moment after the installation of the program. Several European languages are available.
- **you can now use your own dictionary created with the help of a compiler installed on your desktop computer**
Advanced users can create their own dictionaries using a special program with all necessary tools and then use it with **"SlovoEd"** engine on their mobile devices (see **"SlovoEd Studio"**).

Main features of the "SlovoEd" program

These are the main features which have always distinguished **"SlovoEd"** program, providing you maximum convenience and highest possible result:

- **several colour schemes**
You can personalize your dictionary by choosing one of the available colour schemes.
- **Resident module**
Get a translation without having to exit the application you are working in – a small dictionary window will appear right in the active application!
- **search history**
Your last 15 queries are saved in the history – you can come back to them at any time.
- **you can install "SlovoEd" on an expansion card**
You can economize the device main memory by installing the program on a Memory Stick, a Secure Digital Card or a MultiMedia Card.
- **Word of the Day**
With **"SlovoEd"** you don't have to scan the dictionary looking for the word you'd like to learn! Every day a word is chosen from the dictionary at random and is shown to you (once a day or on every start of the program).

Besides, with **"SlovoEd"** you get:

- high retrieval rate
- ability to install several word databases on one mobile device
- ability to edit entries and add new entries using the powerful built-in editor
- large number of dictionary entries
- high-quality word databases prepared by professional linguists
- phonetic transcription in a dictionary entry (for some dictionaries)
- quick switching between dictionaries

- convenient visual layout and multicolour formatting of word entries, hyperlinks between entries
- full-screen mode to show translations

All those features make the navigation easy and the use of the program convenient.

Language versions of "SlovoEd"

Dictionaries for the following languages are available:

Arabic	German	Polish
Bulgarian	Hebrew	Portuguese
Croatian	Greek	Romanian
Czech	Hungarian	Russian
Danish	Italian	Serbian
Dutch	Latin	Slovenian
English	Latvian	Spanish
Estonian	Lithuanian	Swedish
Finnish	Norwegian	Turkish
French		Ukrainian

We are widening the range of languages: Catalan, Vietnamese, Armenian and Slovak dictionaries are now in the development stage.

Some language versions of the dictionaries are available in several editions: **compact**, **extended**, and others (depending on the number of entries). You can choose any edition according to your needs and device memory limitations.

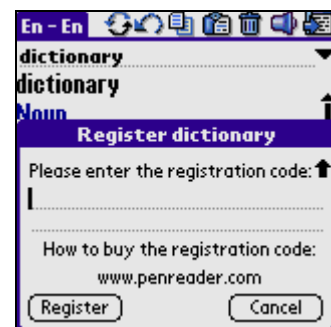
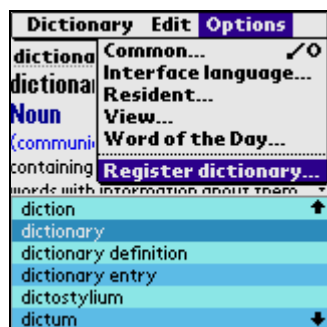
The interface of the dictionary is available in several European languages, including English, German, French, Spanish, Italian, and Dutch.

Please, visit our web-site to find out more about the dictionaries available for your language: <http://palm-dictionaries.penreader.com/>.

Demo-version limitations and registration

The more you use an unregistered dictionary, the more you get a message saying your copy is unregistered instead of the translation. You receive the registration code for your dictionary after purchasing the software (the detailed info about how to obtain your registration code is available in the section: "**How to get the registration code**").

To register the program you should open the **Options**, select **Register dictionary**, and enter the registration code in the registration window.



Installation

ATTENTION!

1. If you want to use a dictionary for a language (your native language), which is not supported by standard Palm OS (for example, Russian, Greek or Turkish), you have to install the PiLoc language support system (which allows you to see native symbols on your Palm). This way you will be able to type words in your native language, and "SlovoEd" will display translations with specific native symbols properly. If you don't install native language support system, you will see unreadable symbols (gibberish).
2. We recommend that you use our localization system PiLoc. You can find more detailed information about PiLoc at our web site: <http://www.penreader.com/PalmOS/PiLoc.html> Demo versions of PiLoc are available at <http://piloc.penreader.com>
3. Some of the dictionaries we develop, for example, Russian-German and Russian-French dictionaries, don't work without PiLoc (version 2.20 and higher) at all, as they use API of PiLoc. In the following instructions we assume that you are using PiLoc 2.20 or higher.

You can install the dictionary engine and the dictionary databases into the main memory of your device or on an expansion card.

We recommend you to install the dictionary engine into the main memory, and the dictionary databases on an expansion card. This will help you to save the space in the main memory and provide the fast speed of work.

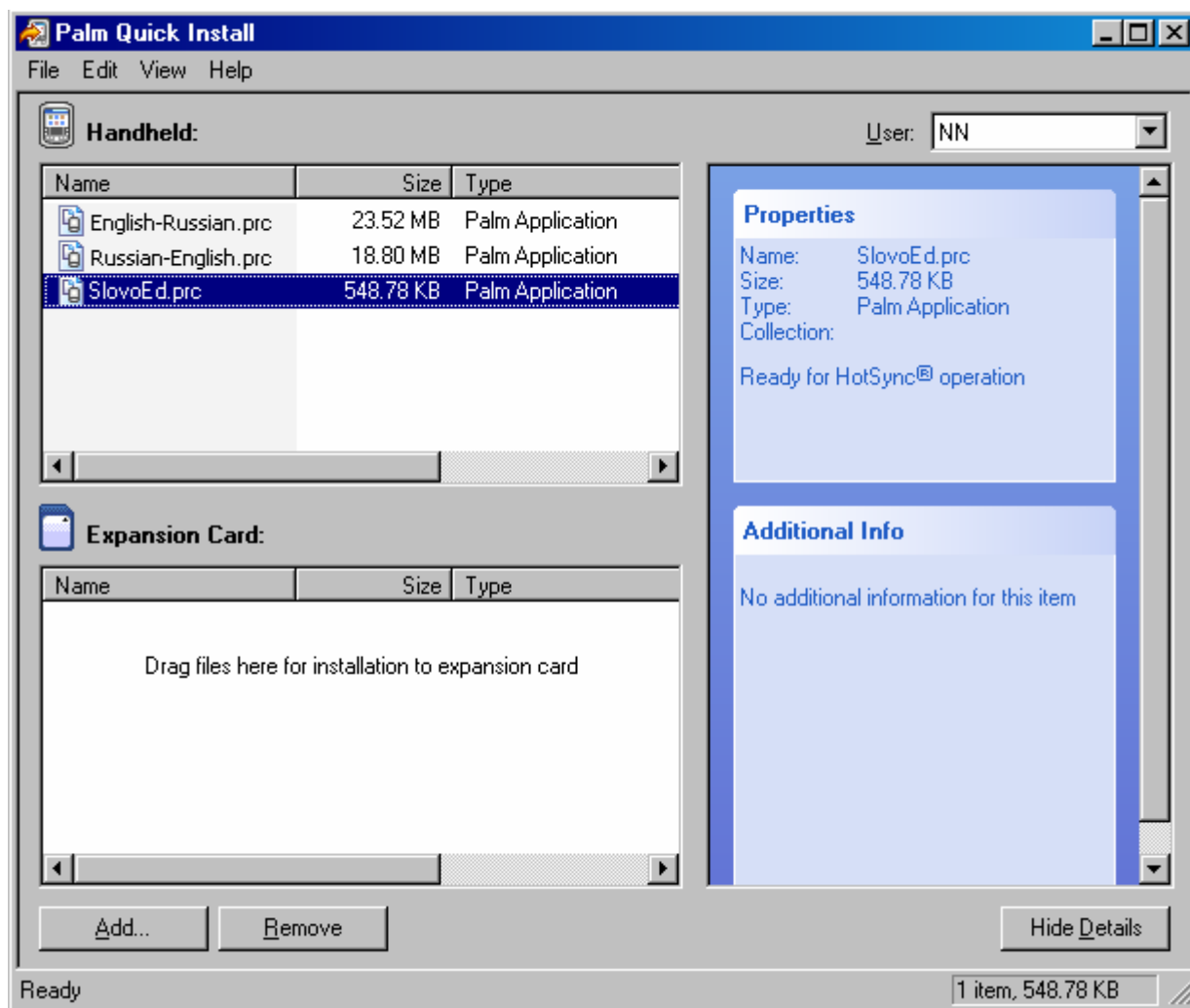
You can also at any moment move the engine or the dictionary databases to the expansion card after the installation. The process of relocation of the program files is described in the "**Dictionary**" section.

This section describes the installation of the dictionary.

To install the program perform the following steps:

1. If an older version of "**SlovoEd**" was installed on your device, you should uninstall it. For the uninstallation you can use the instructions from this document.
2. Begin the installation of "**SlovoEd**" 2005. Find the cfollowing omponents: :
 - **the dictionary engine** (SlovoEd.prc).
 - **dictionary databases** (2 files for bidirectional dictionary and 1 file for monodirectional dictionary). For example, if you are going to install a bi-directional English-French dictionary, you will need 2 files: English_Russian.prc and Russian_English.prc.
3. Double-click on each of the *.prc files, or launch **Palm Desktop** and select the **Quick Install** item in the **Palm Desktop** window.
4. The **Palm Quick Install** window will appear. If you want to install the dictionary into the main memory of your device, drag-and-drop the dictionary files to the **Handheld** field. If you want to install the program on an extension card, drag-and-drop the files to the **Expansion Card** window. You can also use the **Add** button to move the file to the necessary field.

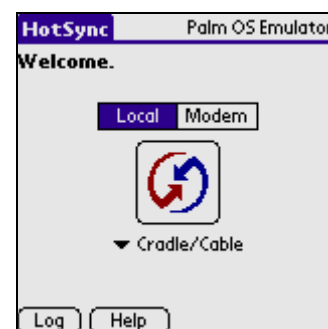




NOTE

The illustrations show the interface of Palm Desktop 4.1 and Quick Install 1.0

5. Synchronize your mobile device with your desktop computer using the HotSync program. To perform this operation you should connect the mobile device to the desktop computer, open HotSync on the mobile device and tap the icon in the centre of the screen.



6. After the installation the "SlovoEd" icon will appear in the applications window.



You can move the dictionary files from the main memory to the extension card after the installation. This procedure is described in the section "Ошибка! Источник ссылки не найден."

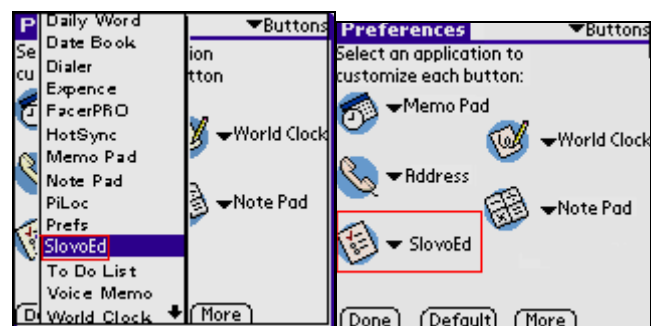
How to use "SlovoEd"

Getting Started

To run "SlovoEd" tap the "SlovoEd" icon in the applications window.

You can also run "SlovoEd" just by pressing a hardware button.

To assign a new action to a hardware button, open **Prefs>Personal>Buttons**, select the button and then and select "SlovoEd" near it.



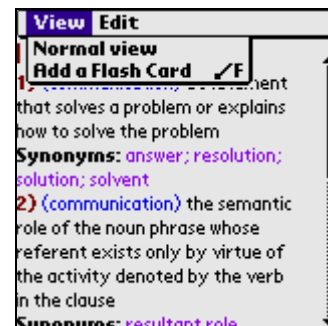
NOTE

"SlovoEd" also has the Resident mode which allows you to perform a quick word lookup from any application (without having to quit the application you are currently working in). For example, you can invoke the dictionary while working in Memo Pad. For details see "**Menu in the full screen mode**"

The menu in the fullscreen mode contains 2 sections: **View** and **Edit**.

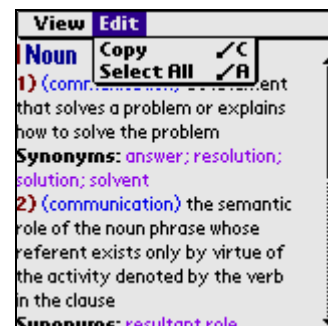
View

- **Normal view.** Select this item to return to the main window of the dictionary.
- **Add a Flash Card.** Select this item to save the word to a card for studying.



Edit

- **Copy.** Allows you to copy the selected text into the clipboard.
- **Select All.** Selects all text in the dictionary entry.

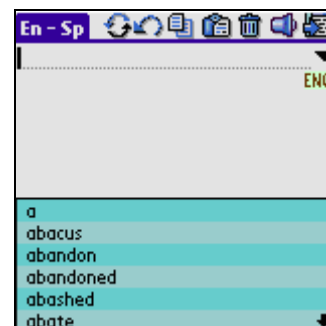


Resident mode".


Input methods

When the program starts, you see the **main window** of the dictionary:

The **input line** is on the top of the screen - type in a word to get its translation (or interpretation).



You can use the following input methods:







- **Graffiti.** To change the layout tap the layout indicator (**ENG**) under the input line or use the following Graffiti strokes: ↘ (Graffiti 1), ↗ (Graffiti2).
- **Onscreen keyboard or portative keyboard.**
- **Paste operation.** To paste the text from clipboard use the **Edit** menu, a special Graffiti stroke or the **Paste** button  at the top of the screen.

- **Paste on start** option. (To switch this option on use **Options > Common** menu). When this option is active, the text from the clipboard will be pasted into the input line on each start of the dictionary.

If the word is listed in the dictionary database, you will see its translation (or interpretation) in the area under the wordlist. If the word is not listed in the dictionary database, you will see the words which are closest to what you have typed in the input line. You can scroll the wordlist using the scrollbar on the right or the Up-Down hardware buttons.

Program Interface



The screenshot on the right shows the main dictionary window. The elements of the interface have the following meaning:

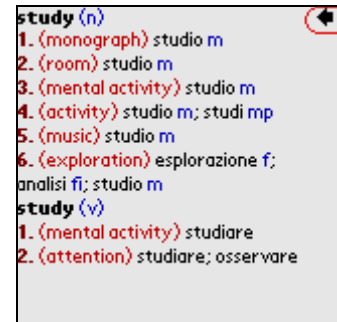
1. **Input line.**
2. **Dictionary entry.** You can maximize the dictionary entry using the button 12. The formatting of the entry varies in different dictionaries, but usually grammatical information is **blue**, set expressions with the word are **green**; the translation is black, the phonetic transcription is **grey**.
3. **Wordlist**
4. **Entry scrollbar**
5. **Wordlist scrollbar.** You can also use Up/down hardware buttons to scroll the wordlist.
6.  **Switch dictionaries** icon switches to the reverse dictionary (for example, if you are reading an entry of an English-Spanish dictionary, tapping this button will switch the dictionary to the Spanish-English dictionary).
7.  **Back.** Returns to the previous entry.
8.  **Copy.** Copies the selected word into the clipboard.
9.  **Paste.** Pastes the text from clipboard into the input line.
10.  **Clear.** Clears the input line.
11.  **Sound.** Allows you to listen to the pronunciation of the word this option is available only if the Sound Module is installed and the pronunciation of the selected word is present in the Sound Module



Appendix:

Sound module. Installation and usage "

12.  **To the full-screen mode.** To leave the full-screen mode and minimize the entry window tap the arrow in the upper-right corner .

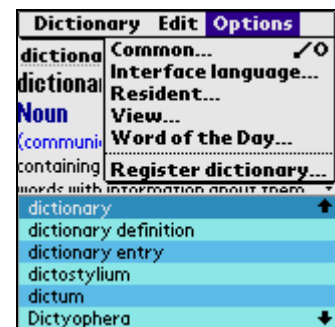
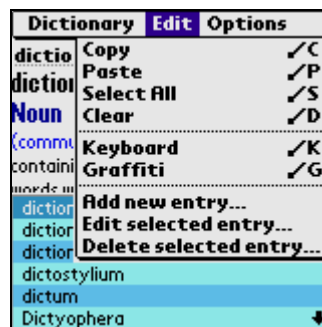


13. **History button.** Tap the downwards pointing arrow to view the list of 15 previous queries.
14. **Graffiti indicator.** Shows the current Graffiti layout. If you are using PiLoc 2.20 or higher, you can switch the layout by tapping this indicator.

Dictionary menu

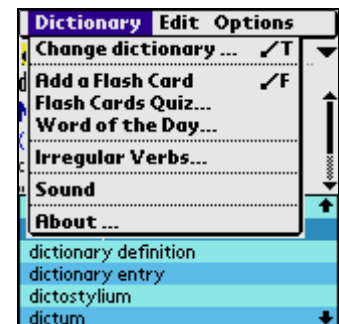
Menu in the main window

The dictionary menu has 3 sections. This chapter describes each of them.



Dictionary

Using this menu you can perform different operations with the dictionary databases, save words to flash cards, take the flash card quiz, listen to the pronunciation of words or learn more about the program.

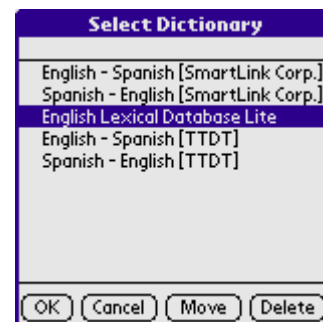


▪ Change dictionary

Using the **Dictionary > Change dictionary** menu you can change the current dictionary, if more than one dictionary are installed on your device.

Besides, you can move the dictionary databases to the extension card or delete a dictionary database.

If the dictionary databases are located on an extension card, the program will be loaded more slowly than when they are located in the main memory. To speed up the loading of the program switch on the option **Cache cards dictionaries** (see "**Common options**").



ATTENTION!

When you move (or delete) one dictionary, the reverse dictionary will also be moved (deleted). For example, if you delete an English-French dictionary, the French-dictionary will be deleted too.

Besides from the **Change dictionary** menu, there are several ways to switch to the reverse dictionary:

1. If you have chosen a hardware button to launch "**SlovoEd**", and press it when you work with the dictionary "**SlovoEd**", and the program will switch to the reverse dictionary.
2. If you type in a word in another layout when working with a dictionary, the program will automatically switch to the reverse dictionary. For example, if you enter a Russian Word while working with an English-Russian dictionary, the program will switch to the Russian-English dictionary.
3. The program switches to the reverse dictionary when you change the Graffiti language layout, and vice versa: the Graffiti layout is changed automatically when you change the dictionary (provided that you are using PiLoc 2.20 and higher).
4. Many words in the dictionary entry are hyperlinks. So, when you tap a word from the translation field, the program begins to search for this word in the reverse dictionary.

- **Add a Flash Card.** This item allows you to save a word to a flash cards for studying (see "**Adding Flash Cards and Flash Cards Quiz**")
- **Flash Cards Quiz.** This menu item allows you to start the flash Card Quiz (see "**Adding Flash Cards and Flash Cards Quiz**")
- **Irregular verbs** (for English language only). This item opens the table of irregular verbs (see "**Table of irregular verbs**").
- **Sound.** This item allows you to listen to the pronunciation of the current word (provided that the Sound Module is installed on your device and it contains the necessary sound entry).
- **About.** Here you can get the information about the active dictionary, the number of entries it contains, and learn more about the Sound Module.

Edit

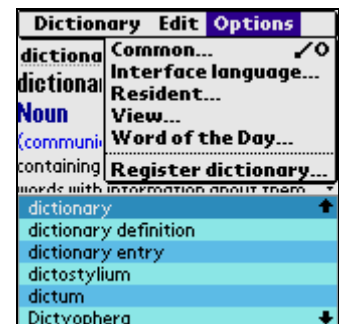
This menu section allows you to perform the following functions:

- **Copy.** Allows you to copy the selected text into the clipboard.
- **Paste.** Pastes the text from the clipboard into the input line.
- **Select All.** Selects the text in the input line
- **Clear.** Clears the input line.
- **Keyboard.** Opens the onscreen keyboard.
- **Graffiti.** Opens the Graffiti help.
- **Add new entry.** Creates a new dictionary entry (see "Adding/Editing entries").
- **Edit selected entry.** Allows you to edit the current entry (see "Adding/Editing entries").
- **Delete selected entry.** Deletes the current entry.



Options

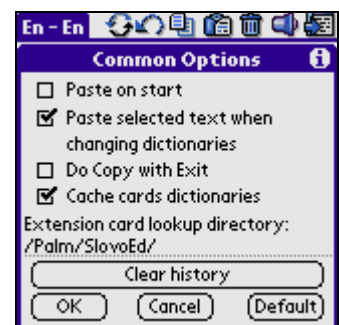
The **Options** menu section can be used to change the dictionary settings or register a dictionary (or a Sound Module).



Common options

After selecting **Common** in the **Options** section you proceed to the window which contain the main dictionary settings:

- **Paste on start.** The text from the clipboard will be pasted into the input line automatically on the start of the "SlovoEd" program.
- **Paste selected text when changing dictionaries.** If this item is selected, the text which you have recently selected will be pasted into the input line on the start of the "SlovoEd" program. This means that you don't have to copy the selected text before opening the dictionary.
- **Do Copy with Exit.** The last dictionary entry that you viewed before the exit will be copied into the clipboard. If this option is active, you can paste the translation from the clipboard into another application.



- **Cache cards dictionaries.** This function helps to speed up the speed at which the program loads the dictionary databases from the extension card. When you use the dictionary database installed on the extension card for the first time, the part of the dictionary base is copied into the main memory. When you exit the program, the dictionary database can either remain left in the main memory or be deleted from it. When this option is on, the dictionary database remains in the main memory, so that the program doesn't have to load it from the card again, this makes the program work faster. Is this option is off, the program will have to load the dictionary database from the card each time that you start the program.

NOTE

The cache size can be up to 500 Kb (depending on the dictionary database).

- **Extension card lookup directory.** Here you can enter the path to the dictionary files on the extension card. By default this path is /Palm/SlovoEd/, but if you have changes the directories structure, or renamed the dictionary directory, you should enter the new path here. For example, if you have renamed the folder "SlovoEd" to "My Dictionary" and have moved it up, the new path will be /My Dictionary/.
- **Clear history** button. Using it, you can clear the history (the last 15 entries you have viewed).
- **Default** button. Restores the default settings.

Interface language

In this window you can select one of the available interface languages.



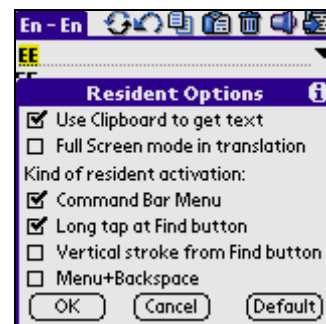
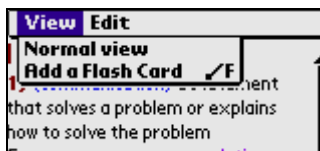
Resident options


The Resident module is the part of "SlovoEd" program that allows you to get the translation of a word without quitting the application you are working in. For details see "Menu in the full screen mode

The menu in the fuulscreen mode contains 2 sections: **View** and **Edit**.

View

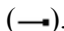
- **Normal view.** Select this item to return to the main window of the
- **Use clipboard to get text.** The clipboard is necessary for the normal work of the Resident module with some applications., such as Mail, AvantGo, Blazer, WebClipping), WordSmith, DocumentsToGo. Thos option makes the work of the Resident possible in those applications. Be careful: the information that had been in the clipboard before you invoked the Resident can be lost.
- **Kind of resident activation.** You can use one of the following methods to invoke the Resident:



1. **Command Bar** menu. You should draw the  stroke in the Graffiti area of your device and



select the dictionary icon on the panel.

2. Tap-and-hold the **"Search"** button on the Graffiti area. If you tap on this button, the standard Palm OS search window will appear, and when you tap-and-hold this button, the Resident will be invoked.
3. Vertical stroke from the **Search** button to the **Prefs** button in the Graffiti area.
4. Menu+BackSpace. Tap the **Menu** button in the Graffiti area and draw the Backspace stroke (.

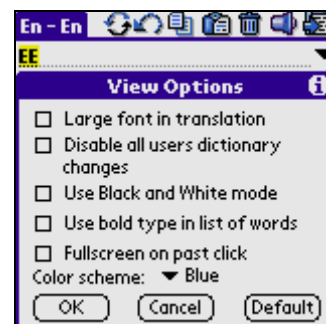
NOTE

If your mobile device is a keyboard device without Graffiti area (for example, Handspring Treo 600, PalmOne Treo 650, PalmOne Tungsten W), the only way to invoke the Resident is Menu+BackSpace.

View options

In the **View Options** window you can change the settings which define how the dictionary entries look:

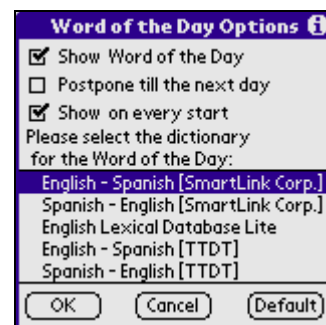
- **Large font in translation.** All text in the text font in the dictionary entry will be large.
- **Disable all users dictionary changes.** This option temporarily switches off all user changes in the dictionary entries (they will not be shown unless you uncheckmark this option).
- **Use Black and White mode.** Switches off the colour formatting in the entries. This option is useful if your device has a black-and-white screen: by default different colours are substituted by different gradations of grey, but when you select this option, the picture will just black-and-white, and therefore it will be more contrast.
- **Use bold type in list of words.** The font in the wordlist will be bold.
- **Fullscreen on past click.** When this option is enabled, the entry will be opened in the full screen mode after you tap on any place of the dictionary entry where there is no text.
- **Color scheme.** Here you can select the colour of the wordlist from 5 available colour schemes.



Word of the Day options

This window contain the options which define how frequently the Word of the Day will be shown and what dictionary will be used to select it.

- **Show Word of the Day.** Each day a word will be chosen at random order from the dictionary and shown at the start of the program. When this option is disabled, the Word of the Day will not be shown.



- **Postpone till the next day.** If you do not turn your device on for several days, the words will be accumulated. (For example, if you turn on your device after two weeks of absence, you will be able to view 14 words of the day.)
- **Show on every start.** The Word of the Day will be shown each time you run the dictionary.

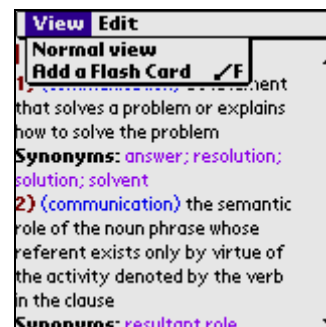
Besides, in this window you can select the dictionary from which the Word of the Day will be selected.

Menu in the full screen mode

The menu in the fullscreen mode contains 2 sections: **View** and **Edit**.

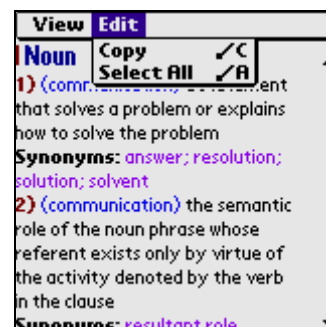
View

- **Normal view.** Select this item to return to the main window of the dictionary.
- **Add a Flash Card.** Select this item to save the word to a card for studying.



Edit

- **Copy.** Allows you to copy the selected text into the clipboard.
- **Select All.** Selects all text in the dictionary entry.



Resident mode

Resident mode (Resident) is the usage mode of the dictionary that allows you to get the translation while working in another application, without exiting the program you are working in. To view the translation select the word, and invoke the Resident using one of the methods described in the section "**Resident options**". The Resident window will appear in the bottom of the screen. If the word you are looking for is present in the dictionary, you will see its translation. Otherwise, the words that are close to this word in the dictionary list will be shown.

Resident. Interface elements.

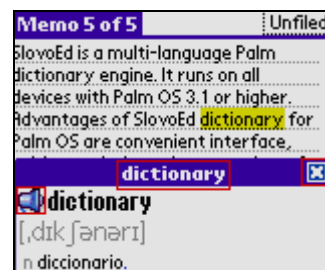
The Resident window has the following functional parts:



Close Resident window button.



To the wordlist button. Tap the arrow in the bottom-right corner to open the wordlist on the resident window. If you want to view the translation of a word from the wordlist, tap this word.





If you tap the window title, the menu will appear.



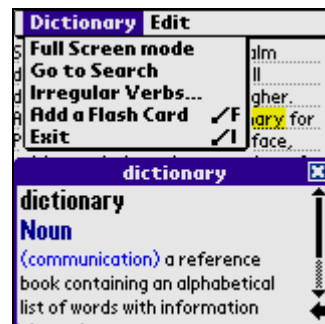
Sound icon. Tap this icon to listen to the pronunciation of the word.

Resident menu

The Resident menu has 2 sections: **Dictionary** and **Edit**.

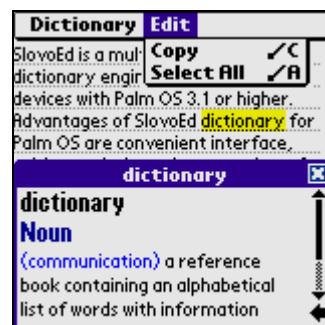
Dictionary:

- **Switch dictionary.** Switches the dictionary to the reverse.
- **Change dictionary.** Allows you to select the dictionary from the list of the installed dictionaries.
- **Run SlovoEd.** Allows you to open the dictionary in the standard mode.
- **Irregular verbs.** Opens the table of irregular verbs.
- **Exit.** Closes the Resident window.



Edit menu:

- **Copy.** Copies the selected text into the clipboard.
- **Select All.** Selects all text in the dictionary entry.
- **Paste.** Pastes the text from the clipboard into the input line.
- **Clear.** Clears the input line.



The settings of the Resident are available in the menu of the main window of "SlovoEd" (see "Resident options").

How "SlovoEd" can help you to learn new words

"SlovoEd" dictionaries have several functions which can help you to learn a foreign language:

Table of irregular verbs

To view the table of irregular verbs, open **Dictionary** menu and select **Irregular verbs**. In this version of the program the table of irregular verbs is available only for English language.

Tap the column heading to change the sorting order of the words: alphabetical/reverse alphabetical order. Thus, even if you know only one form of the verb, you will be able to find the other forms quickly.

Tap any of the forms to see the dictionary entry for the verb.

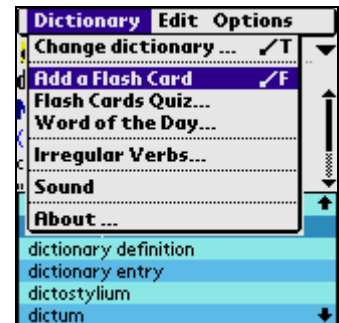
Irregular verbs		
Inf.	↑ Past	P.Part.
abide	abode	abode
	abided	abided
arise	arose	arisen
awake	awoke	awaked
		awoke
backbite	backbitten	backbitten
backslide	backslid	backslid
be	was	been
	were	

Adding Flash Cards and Flash Cards Quiz

"SlovoEd" can help you to learn the translation of new words.

If you want to save a word to a card for studying, select **Dictionary>Flash Cards>Add a Flash Card**.

You can also save add a Flash Card using the menu in the Resident.



After you have added some Flash Cards, try to take a Flash Cards Quiz. To start the quiz, select **Dictionary>Flash Cards Quiz**.

Several cards will be taken at random from the saved Flash Cards and demonstrated to you.

First, you should recall the translation of the word you see on the screen.

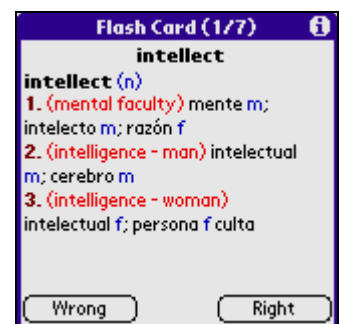
To pass on directly to the next flash card, tap **Next card** (The word you skipped will not be included in the quiz statistics).

To check if the translation you have recalled is right, tap the centre of the screen.



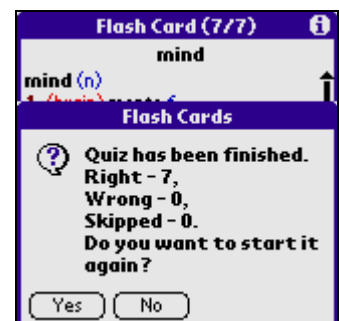
Then a window with dictionary translation of this word appears.

There are two buttons in the translation window: **Right** and **Wrong**. If you think that the translation you recalled is correct, tap **Right**, and otherwise tap **Wrong**.

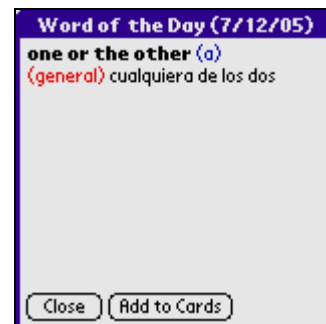


"SlovoEd" will save the result and show the quiz statistics when the quiz is finished: the number of right translations, the number of wrong answers, the total number of cards shown and the number of learned words.

The program saves statistics for several quizzes and if you often successfully recall the translation for a certain word, this word is marked as "learned" and will not be included in the quiz any more.



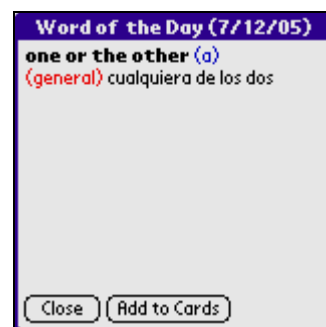
In the Flash Cards Quiz there is the **Card** menu. It allows to: delete the current flash card or delete all cards.



Word of the Day

Word of the Day is another word-learning option of the program. Each day a word is chosen at random from the dictionary and shown on the start of the program. If you tap **Close**, the Word of the Day will be dismissed. If you tap **Add to cards**, the word will be saved to a Flash Card. **Word of the Day** gives you an opportunity to learn a new word each day without having to select it from the dictionary wordlist.

The options of this feature can be set in the **Options>Word of the Day** options (see "**Word of the Day options**")



How to create your own dictionary

There are two ways to create your own dictionary – the standard built-in function of the "**SlovoEd**" dictionary (**Add/Edit entry**), or a special compiler - "**SlovoEd**" **Studio** which we recommend to advanced users. The first one can be used if you want to occasionally add entries while working with the dictionary; the second is optimal if you need a professional toolkit that allows to compile an existing word database into the *.prc format which is compatible with "**SlovoEd**" dictionary engine on your mobile device. These two ways are described below.

Adding/Editing entries

You can modify the dictionary databases of the "**SlovoEd**" program by adding new entries or editing the existing entries.

The procedure of adding an entry is similar to the procedure of editing an entry. The only difference is that when you add a new entry you will be prompted to type in the entry title before you proceed to the window where you can edit the text of the entry.

To add a new entry, open the **Edit** menu and select **Add new entry**. To edit an existing entry select **Edit selected entry**.





You will be prompted to enter the entry title. Enter the word you want to add and tap **OK**.

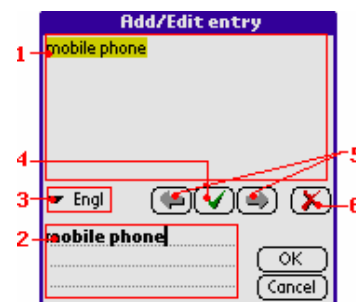


If you are adding a new entry, a window will appear where you should enter the title of the new entry..



The Edit entry window has the following functional parts:

1. The entry preview area.
2. The Edit field, where you can modify an element (an element is a part of text with the same style).
3. The list of styles that can be applied to the elements of the entry.
4.  **Apply** button. After editing an element tap this button to apply the selected style.
5.   The buttons which allow you to move between the elements of the entry.
6.  **Delete** button. Tap it to delete an element.



Tap **Save** to save the entry, or **Cancel** to return to the dictionary.

If you want to switch off all user changes, select **Options>View** and checkmark **Disable all users dictionary changes**.

"SlovoEd Studio"

"SlovoEd Studio & Conversion Tools" is a freeware program for advanced users. It allows you to convert word databases of different formats to the .prc format supported by the "SlovoEd" dictionary engine. With "SlovoEd Studio& Conversion Tools" you can create dictionary databases out of the source file you have chosen and set the layout that you prefer.

"SlovoEd Studio & Conversion Tools" program is installed on the desktop computer; the process is very easy and fast.

The compiler allows you to convert the resource database (*.dsl, *.wb, *.csv) into the *.prc format, which can be used with "SlovoEd" dictionaries..

NOTE

*.dsl is the format of Lingvo dictionaries (for more information see <http://www.lingvoda.ru/dictionaries/create.asp#p3>)

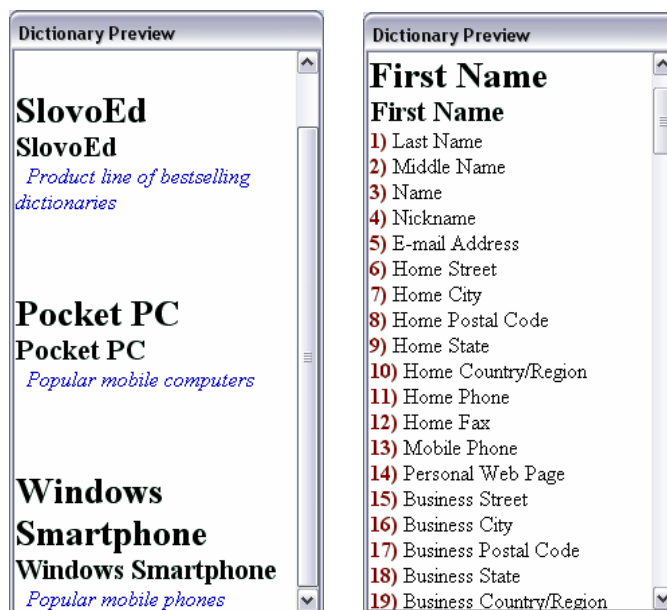
*.csv - comma separated values (Microsoft Excel)

*.wb is a popular web-dictionaries format (for an example, see <http://www.freelang.net/dictionary/index.html>)

The "SlovoEd Studio" program has special functions which make the dictionary entry markup process simple. "SlovoEd Studio" has a convenient interface. You can quickly assign an appropriate style to the entry title, stylistic labels, grammatical information and the other logical parts of an entry.

"SlovoEd Studio" not only helps you to compile a dictionary database, but also helps you to convert any dictionary-like data to a handy format.

For example, you can organize a contact list or a kind of corporative database which contains information on the on company's products.



This utility is more convenient than the standard instruments (such as Pocket Excel or a built-in Address book), because it allows to markup all the entries quickly according to the logical structure of the entries, and because the *.prc database which you get at the output is compatible with all mobile platforms. Another advantage of a *.prc database is that it is significantly more compact than an ordinary database, and the "SlovoEd" engine guarantees the fast search even if the *.prc file contains many thousand entries.

"SlovoEd" dictionary engine should be installed on your device if you want to use the dictionary databases, created with the help of "SlovoEd Studio". To copy the dictionary databases to the device you can use the **Quick Install** component of the **Palm Desktop** program (the process of the installation is described in the sections similar to the section "Installation"). When your dictionary databases are installed on your device, you will be able to select them in the window of the "SlovoEd" program..

You can download the free copy of "SlovoEd Studio" at <http://www.studio.penreader.com>.

Relocation of the dictionary files

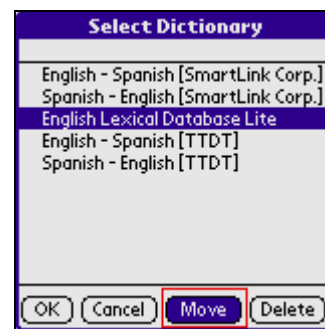
We recommend that you install the "**SlovoEd**" dictionary engine into the main memory of your device, and the dictionary databases – on an extension card. This will help you to save the space in the main memory. You can also at any moment move the engine or the dictionary databases to the extension card after the installation. The process of relocation of the program files is described in this section.

Moving dictionary databases to an extension card

To move the dictionary databases to the extension card, open the **Dictionary** menu section and select **Change dictionary**

In the Select dictionary window select the dictionary you want to move and tap **Move**.

If the dictionary databases are located on an extension card, the program will be loaded more slowly than when they are located in the main memory. To speed up the loading of the program switch on the option **Cache cards dictionaries** (see "**Common options**")



ATTENTION!

. When you move one dictionary, the reverse dictionary will also be moved (deleted). For example, if you delete an English-French dictionary, the French-dictionary will be deleted too.

Moving the dictionary engine with the dictionary databases to the extension card

To move the "**SlovoEd**" dictionary engine together with the dictionary databases to the extension card, do the following:

1. Deactivate the Resident module: open the menu of the dictionary and select **Options > Resident > Kind of resident activation**. Then uncheckmark all the activation methods. You can also restart your device 2 times to deactivate the Resident.
2. Open the menu in the application window and select **Copy** in the **App** section.

Select "**SlovoEd**" in the list of applications and tap **Copy**.



ATTENTION!

If "**SlovoEd**" dictionary engine is located on the expansion card, it will not be possible to use the Resident module.

Uninstallation

1. Deactivate the Resident module: open the menu of the dictionary and select **Options > Resident > Kind of resident activation**. Then uncheckmark all the activation methods. You can also restart your device 2 times to deactivate the Resident.
2. Tap the Home icon on the Graffiti area to open the applications window.
3. Open the menu and select **App > Delete**. Select "**SlovoEd**" in the list of applications and tap **Delete**.
4. To delete the dictionary databases select them in the list (the name can look like English_Russian.prc) and tap **Delete**.

Useful information

Customer Support Service

We recommend that you register in our **E-Care** system which helps to automatically register and update your programs.

To register the program you need the serial number for the solitaires collection; the serial number is written on the registration card or on the CD label.

E-Care allows you to:

- get free updates on the releases of new versions;
- register your copy at any time you want;
- download current versions of the registered programs;
- get in touch with our support team - your request will be processed with the highest priority;
- learn more about our products (get the demo-versions and purchase a the conditions of purchase);
- get the notifications about releases of the new version of the program.

The details of the registration procedure and the E-Care system you can find at:
http://www.penreader.com/company/e_care.html.

Support knowledge Base is available for our customers! You can find there detailed answers to all frequently asked questions about the most popular programs of Paragon Software (SHDD), including

- **PiLoc** [localization](#) system;
- Multilingual **"SlovoEd"** [dictionaries](#);
- Different Palm OS [games](#) (solitaires collection, strategies, "action" games, logical games).

Visit our Support Knowledge Base before writing to our support team or while you are waiting for a reply from the customer support service. We suppose you will find there the necessary information on your problem.

Welcome to Support Knowledge Base!

<http://support.penreader.com/>

Customer Support Service

Tel: (+7 095) 789-67-17

NOTE

When calling from outside Russia, please consider the time shifts: Moscow is 11 hours ahead of San-Jose, 8 hours ahead of New York, 3 hours ahead of London, 2 hours ahead of Munich and Paris, 6 hours behind Tokyo.

Moscow office operation hours are from 11.30 till 19.00 by Moscow local time.

How to get the registration code

We invite you to our web-site <http://palm-dictionaries.penreader.com/> devoted to dictionaries for Palm OS developed by Paragon Software Group. There you can find demo-versions and detailed information about more than 150 different dictionaries available for 30 languages.

Visit our site: <http://palm-dictionaries.penreader.com/> and select the dictionary you want to purchase; after this you can get the registration code using secure on-line ordering with your credit card via the e-Shop. Do not worry, we never get your credit card information, ordering is proceeded through specialized American and European e-commerce systems.

This way of payment provides the "real-time fulfillment", that means that your registration code number will be emailed to you immediately.

Appendix: Sound module. Installation and usage

Many dictionary databases used with "SlovoEd" dictionary engine have always provided phonetic transcription for the words. Now you can look at the translation and the transcription of a word, but also you can listen to it and improve your pronunciation (the words are spoken by professional native speakers).

With a dictionary you can use a Sound module, which contains the pronunciation of the words from the dictionary wordlist. Sound modules available for a specific language vary from maximally full versions to compact versions that contain only pronunciation of the most frequently used words.

For the information about "SlovoEd" dictionaries for Palm OS and available sound modules, please visit our site: <http://palm-dictionaries.penreader.com/>.

Sound Module. Demo-version limitations and registration.

The more you use an unregistered sound module, the more often you hear a beep instead of the pronunciation. You receive the registration code for your dictionary after purchasing the sound module (the information on how to obtain your registration code is available in the section: "**How to get the registration code**"). To register the Sound Module open the **Options** section of the menu, select **Register dictionary** and enter the registration code for the Sound Module.

Sound module. Installation

ATTENTION!

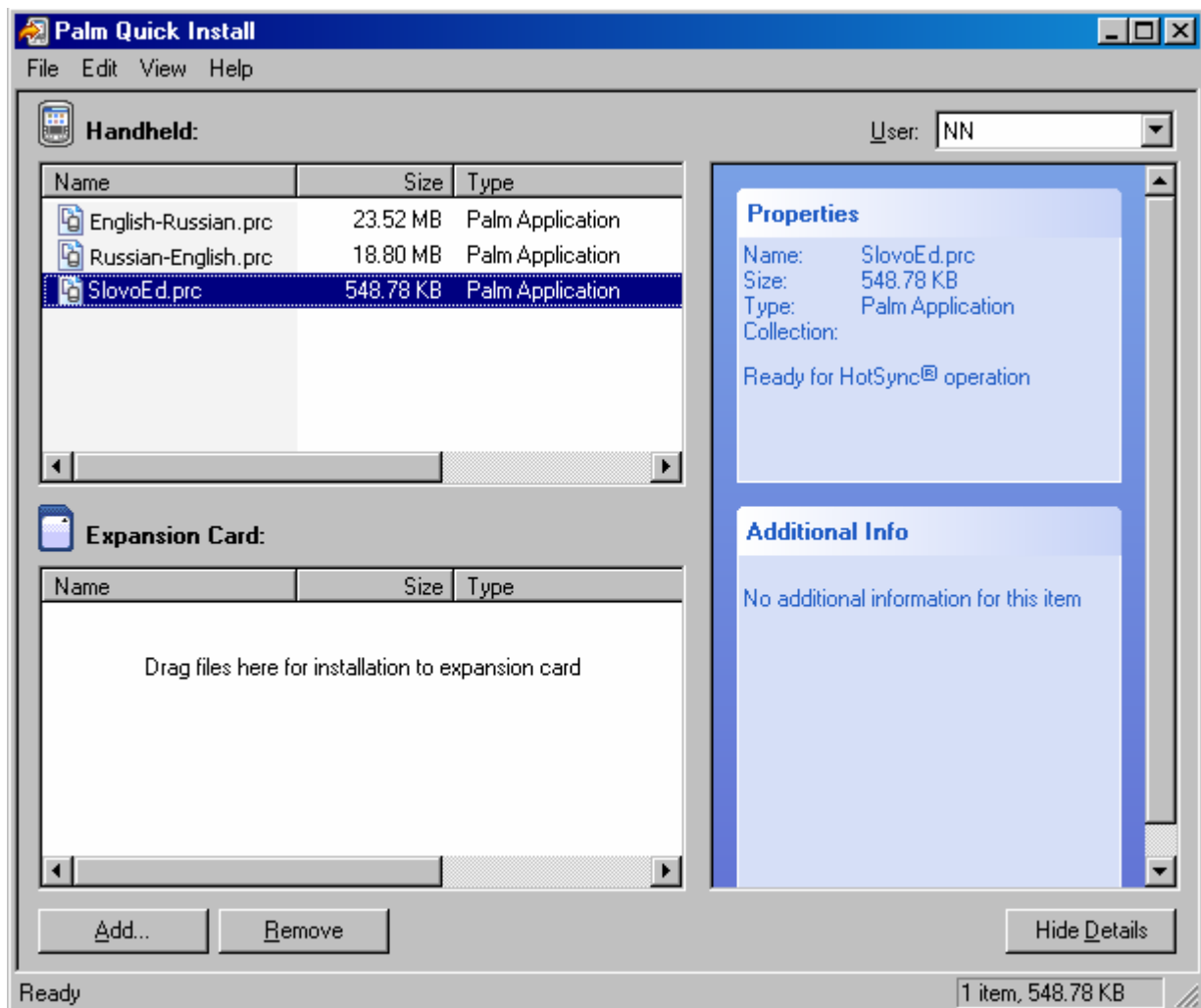
- Sound Module may not function correctly in case it is installed into the main memory of your device (it depends on individual features of some devices). Due to this fact, we do recommend to install Sound Modules on expansion cards.
- Sound Modules will function only with the latest version of the dictionary engine – "SlovoEd 2005". It will not work with earlier versions of the dictionary engine.

To install the Sound Module, you should do the following:

1. Make sure that "SlovoEd" 2005 is installed on your device. The Sound Module will not function with an earlier version of the dictionary engine. The installation of the "SlovoEd" dictionary engine is described in the section "**Installation**"
2. Double-click on each of the *.prc file, or launch **Palm Desktop** and select the **Quick Install** item in the **Palm Desktop** window.
3. The **Palm Quick Install** window will appear. If you want to install the Sound Module into the main memory of your device (not recommendable), drag-and-drop the dictionary files to the **Handheld**



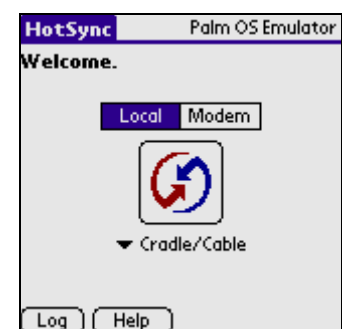
field. If you want to install the Sound Module on an extension card, drag-and-drop the file to the **Expansion Card** window. You can also use the **Add** button to browse for the necessary file.




NOTE

The illustrations show the interface of Palm Desktop 4.1 and Quick Install 1.0



4. Synchronize your mobile device with your desktop computer using the HotSync program. To perform this operation you should connect the mobile device to the desktop computer, open HotSync on the mobile device and tap the icon in the centre of the screen.



Sound module. How to use it


After you install the sound module, the Sound icon  will appear near some words if their pronunciation is present in the sound module (it will be shown in the wordlist in the title of the dictionary entry, and in the Resident).

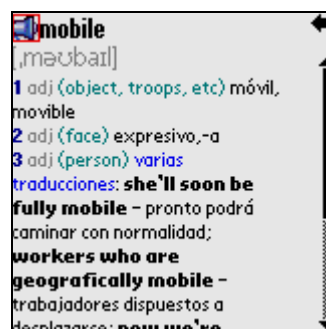
Sound in the main window

To listen to the word tap the sound icon  in the wordlist or the toolbar sound icon . Besides, you can use the **Sound** menu item in the **Dictionary** menu section.





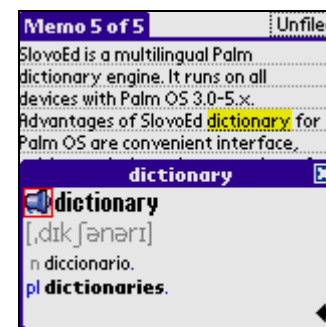
Sound in the dictionary entry

To listen to the pronunciation in the full-screen mode, tap the sound icon  near the title of the entry.



Sound in the Resident

To listen to the pronunciation in the Resident mode, tap the sound icon  near the title of the entry. If you are viewing the wordlist in the Resident window, tap the sound icon  in the wordlist.



Sound Module. Uninstallation.

The Sound Module can be uninstalled with uninstallation of the dictionary. To uninstall the dictionary engine perform the following steps:

1. Deactivate the Resident module: open the menu of the dictionary and select **Options > Resident > Kind of resident activation**. Then uncheckmark all the activation methods. You can also restart your device 2 times to deactivate the Resident.
2. Tap the Home icon on the Graffiti area to open the applications window.
3. Open the menu and select **App > Delete**. Select "SlovoEd" in the list of applications and tap **Delete**.

To delete the dictionary databases, select them in the list (the name can look like English_Russian.prc) and tap **Delete**.

Dear customers!
Your reports and comments are highly appreciated.
They help us to improve our programs quality.
Thank you in advance for your reports.