

# Salvation**Data**

## **HDD Sector Repairer** Ver2.0

Maxtor 541DX Special

## Installation and User Manual

**Salvation HDD Research Center**

Thank you for using Salvation HDD Sector Repairer Maxtor 541DX Special. In order to make sure your installation be successful, please read the following carefully before your installation. You could visit our homepage or contact us via Email in case you want to acquire further information concerned about our products. We appreciate your kindly inquiries and instructions.

#### [Before Getting The Installation Started](#)

[Floppy Disk Version](#)

[CD-ROM Version](#)

#### [The Installation Process](#)

[Floppy Disk Version](#)

[Run Installation Program](#)

[Prepare for Installation](#)

[Start Installation](#)

[CD-ROM Version](#)

[Burn Image](#)

#### [Before Using the Program](#)

#### [Start Using the Program](#)

[Loading Program](#)

[Program Console](#)

[View HDD Info](#)

[Scan and Repair](#)

[Defects Map](#)

[Empty Defect List](#)

[User Help](#)

[Exit Program](#)

[Advanced Utility](#)

[Technical Support](#)

## **Before Getting the Installation Started**

### **Floppy Disk Version**

- 1. Please make sure the floppy disk used to create the bootable disk is in a good condition; we strongly recommend you have the floppy disk formatted once again before using in the creation.**
- 2. DO NOT attempt to run any other application or process any other operation during the course the application program is creating the bootable disk.**
- 3. The installation program will only create the bootable application for this program in the floppy disk but not your computer.**
- 4. The bootable disk created uses special designed OS of its own, therefore the disk could not be recognized by any other standard or nonstandard OS (for example, the bootable disk could not be accessed under Windows). You should read carefully our product use manual.**

### **CD-ROM Version**

- 1. You must have a CD-ROM Recorder correctly installed in your computer in order to create bootable CD-ROM using the CD-ROM version installation program.**
- 2. Please make sure the CD-R or CD-RW use for creating the bootable CD-ROM is writable.**
- 3. The installation program will only create the bootable application for this program in the CD-ROM but not your computer.**
- 4. The bootable CD-ROM created uses special designed OS of its own, therefore the CD-ROM could not be recognized by any other standard or nonstandard OS (for example, the bootable CD-ROM could not be accessed under Windows). You should read carefully our product use manual.**

## The Installation Process

### Floppy Disk Version

#### 1、Run Installation Program

Double click on the installation program hsr2.0Setup.exe, there will be a window showing readme messages as follow appears:



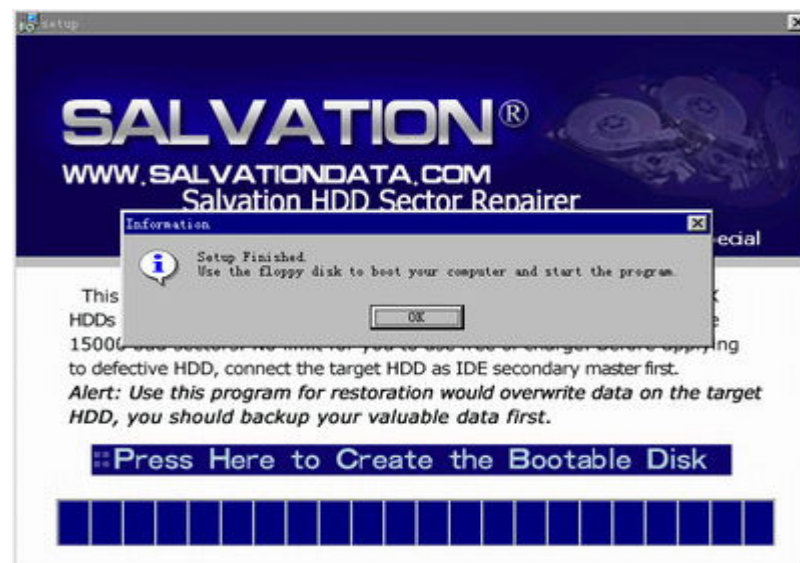
This window contains important information about the program to be installed; you must read carefully before you can go to the next step of installation.

#### 2、Prepare for Installation

Please insert the floppy disk prepared into the floppy disk drive, click the “Press Here to Create the Bootable Disk” button to enter the next step when you are ready.

#### 3、Start Installation

The installation program begins to create a bootable floppy disk:



**The Installation has been finished.**

## The Installation Process

### CD-ROM Version

Use a DATA CD burning software (i.e. NERO) to burn image. In the next step we use NERO for an example to show how to create a bootable CD-ROM.

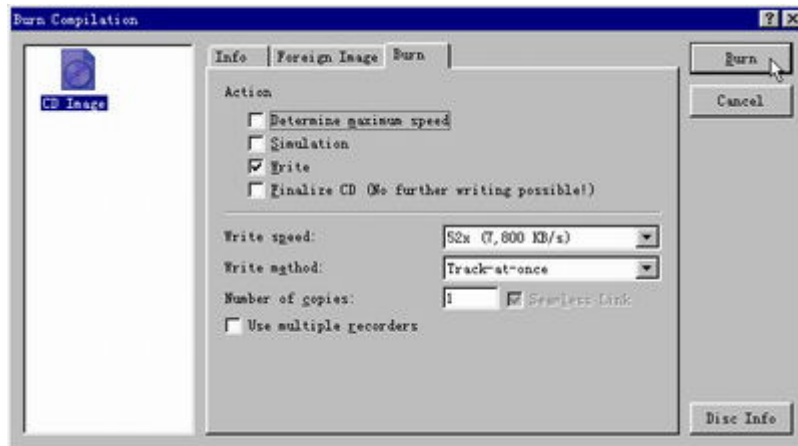
First select NERO “make data disc” function and select “burn image” from the menu “Recorder” as the following picture showed:



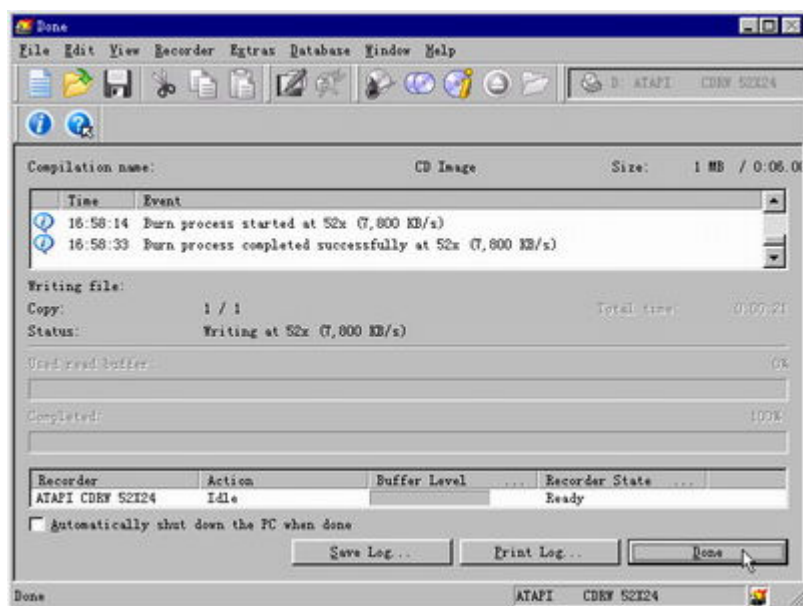
Select the CD-ROM version installation program (that's an ISO package) hsr2.0setup.iso.



There will be a window for Burn Compilation, we could use the default setting for burning, just click “Burn” to continue.



Click the “Done” button on the bottom right corner when the burning is finished, NERO will eject the CD-ROM automatically.



**The Installation of Salvation HDD Firmware Repairer 2.0 (Maxtor 541DX Special) CD-ROM edition has been finished.**

### **Before Using the Program**

- 1. Please make sure that your HDD to be scanned and repaired has been connected to the computer exactly as the program required:**
  - I. The HDD must be connected as IDE Secondary Master.**
- 2. Meanwhile, make sure you have set your computer to boot from FDD (or boot from CD-ROM Drive if you use a CD-ROM version).**

## Start Using the Program

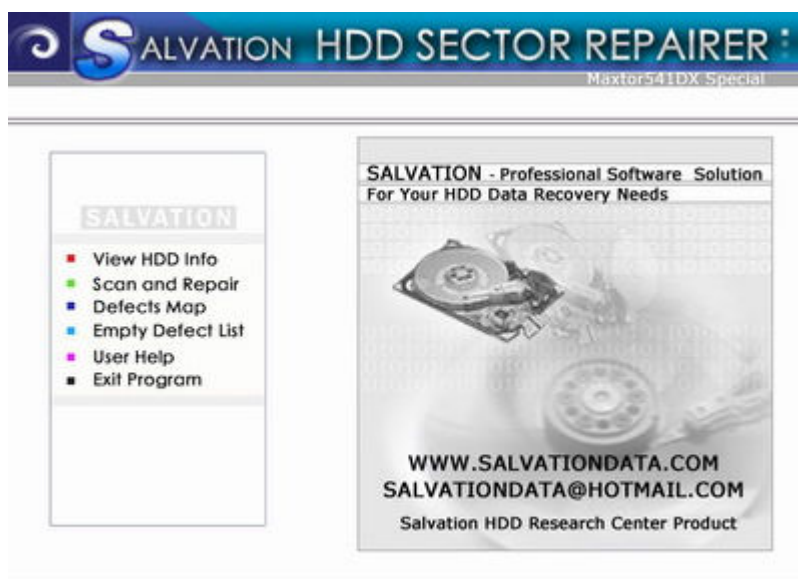
### 1、Loading Program

Insert the bootable Floppy Disk (or CD-ROM) created then start up the computer, the Salvation Scan and Restoration Program will load and run automatically, there will be window showing the loading message appears:



Once the program loaded, system will show you some important information. You must read it carefully.

After you finishing the reading and go forward, you will enter the program console as you can see below:



Salvation Scan and Restoration Program has a very intuitionistic operation interface. Just highlight the function you need from the menu and Enter, the application will do professional scan and defective sector restoration to the target HDD automatically and rapidly.



## **2、 Program Console**

### **1. View HDD Info**

The system will detect the target HDD and show you information about HDD capacity, HDD model and other available attributes.

### **2. Scan and Repair**

You could set a range for scan and repair by input the initial LBA percentage and the final LBA percentage; then system will scan sectors within the range set and repair any defective sector found by adding bad sector into the P-list when scanning finished. This program does not support reverse scan.

"Standard Mode" and "Factory Mode": when you set the scan mode as "Standard Mode" (by inputting 0), program system can only access HDD already recognized by BIOS, therefore dose not support HDD warm connect/ disconnect; when you set the scan mode as "Factory Mode" (by inputting 1), program system can access HDD directly with no need to be recognized by BIOS, therefore supports HDD warm connect/ disconnect. Factory Mode is more stricter than Standard Mode.

### **3. Defects Map**

Any physical defective sector found during the scanning will be mapped here and make it to be clear at a glance.

### **4. Empty Defect List**

This utility could empty the defective sector information recorded in the P-list and G-list in a lump, all defective sectors would be released and then it allows you to move defective sectors from G-list to P-list.

### **5. User Help**

Here you could acquire information about other available resources of Salvation.

### **6. Exit Program**

Exit Salvation HDD Sector Repairer safely.

### **7. Advanced Utility**

Advanced utilities available for advanced users in order to fulfill your personal needs for more specific settings for scan and repair. Use hotkeys to activate advanced utilities:

#### **Ctrl + C: Repair Parameters Setup**

Use "Number of retries" to set number of complete times doing scan and

repair from initial LBA to the final, the input range is from 1 to 999. If you don't want to change the default setting, Esc to skip.

Use "Import Criteria" to set the quantitative criteria for importing defective sectors into P-list; if the number of defective sectors found does not reach the one you set here then system would not add them into P-list. If you don't want to change the default setting, Esc to skip.

Use "Defect Criteria" to set criteria for system determining a bad sector. When one sector failed to reply an instruction within the time you set, system would list that sector as defective; please note that the unit for your input here is 50 ms (microsecond). If you don't want to change the default setting, Esc to skip.

### **Alt + F1: Reset HDD Capacity**

Use this utility to reset a new HDD capacity no larger than the maximum capacity. The capacity then would be cut from the final LBA position towards the initial. If there are still too many defective sectors after scan and repair, you could use this utility to eliminate defects by cutting HDD capability. You have to switch off HDD power and then switch it on to complete the new setting.

### **Alt + T: Restore HDD**

Manually initializes the target HDD to make sure the validity of next operation on that HDD.

### **Alt + I: Add Specific Bad Sector**

Input an LBA value to add that sector as defect into the P-list. When the auto repair utility could not fulfill your need, you could use this utility to add a specific sector.

## **Technical Support**

If you encounter any problem during installing or using Salvation Scan and Restoration Program, please visit us at <http://www.salvationdata.com> for FAQs or quiz on the forum; you could also send Email to [salvationdata@hotmail.com](mailto:salvationdata@hotmail.com) or call us at 0086 28 85211099 (GMT+8 from 9:30 am to 5:30 pm) for supports. We will do our best providing service to you.

If you are a registered user of Salvation products, please quote us your information when you face us for services, we will treat it as top priority.

Thank you again for using Salvation product.