

Salvation**Data**

HDD Scan and Repair Program Ver3.0

Installation and User Manual

Salvation HDD Research Center

Thank you for using Salvation HDD Scan and Repair Program Ver3.0. In order to make sure your installation successful, please read the following carefully before your installation. You could visit our homepage or contact us via Email in case you want to acquire the further information concerned about our products. We appreciate your kindly inquiries and instructions.

[Before Getting The Installation Started](#)

[Floppy Disk Version](#)

[CD-ROM Version](#)

[The Installation Process](#)

[Floppy Disk Version](#)

[Run Installation Program](#)

[Prepare for Installation](#)

[Start Installation](#)

[CD-ROM Version](#)

[Burn Image](#)

[Before Using the Program](#)

[Start Using the Program](#)

[Loading Program](#)

[Program Console](#)

[Defaulted Scan](#)

[Advanced Scan](#)

[Defects Map](#)

[Fast Restore](#)

[User Help](#)

[Exit Program](#)

[Technical Support](#)

Before Getting the Installation Started

Floppy Disk Version

- 1. Please make sure the floppy disk used to create the bootable disk is in a good condition; we strongly recommend you have the floppy disk formatted once again before using in the creation.**
- 2. DO NOT attempt to run any other application or process any other operation during the course the application program is creating the bootable disk.**
- 3. The installation program will only create the bootable application for this program in the floppy disk but not your computer.**
- 4. The bootable disk created uses special designed OS of its own, therefore the disk could not be recognized by any other standard or nonstandard OS (for example, the bootable disk could not be accessed under Windows). You should read carefully our product use manual.**

CD-ROM Version

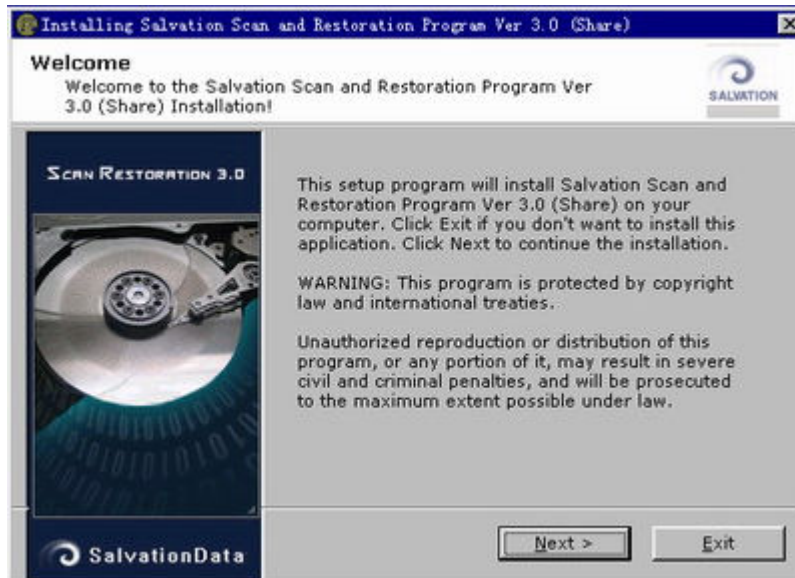
- 1. You must have a CD-ROM Recorder correctly installed in your computer in order to create bootable CD-ROM using the CD-ROM version installation program.**
- 2. Please make sure the CD-R or CD-RW use for creating the bootable CD-ROM is writable.**
- 3. The installation program will only create the bootable application for this program in the CD-ROM but not your computer.**
- 4. The bootable CD-ROM created uses special designed OS of its own, therefore the CD-ROM could not be recognized by any other standard or nonstandard OS (for example, the bootable CD-ROM could not be accessed under Windows). You should read carefully our product use manual.**

The Installation Process

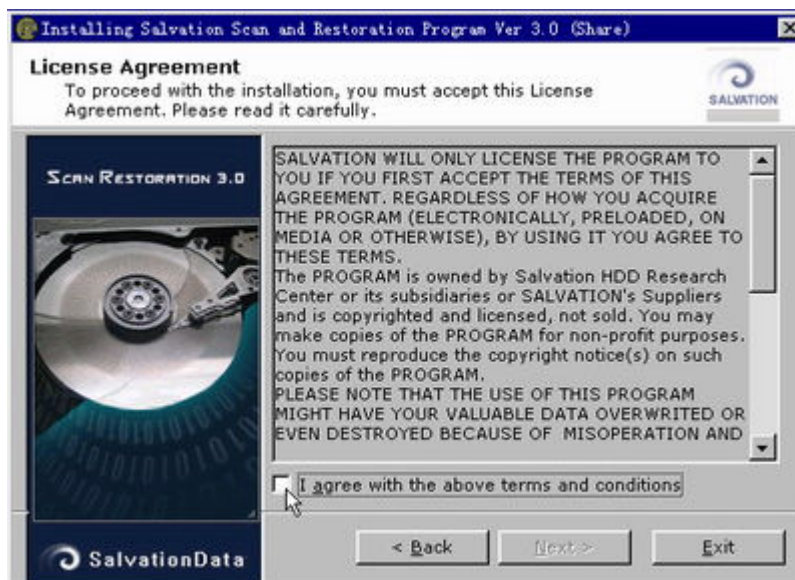
Floppy Disk Version

1、Run Installation Program

Double click on the installation program Setup.exe, there will be a window showing welcome messages as follow appears:



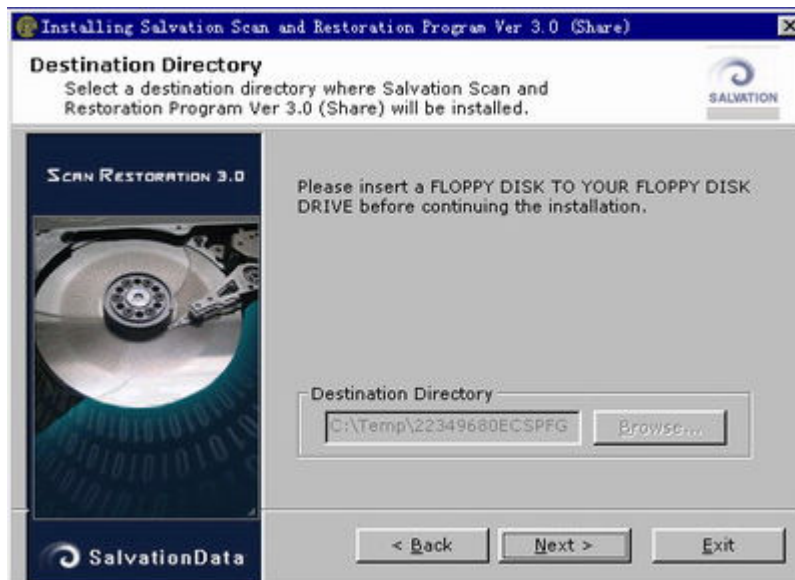
Press "Next" if you decided to install, window as follow appears:



This window contains the License Agreement of SalvationData, you must read carefully then agree with all the terms and conditions before you can go to the next step of installation.

2、Prepare for Installation

You will see the follow window appears:



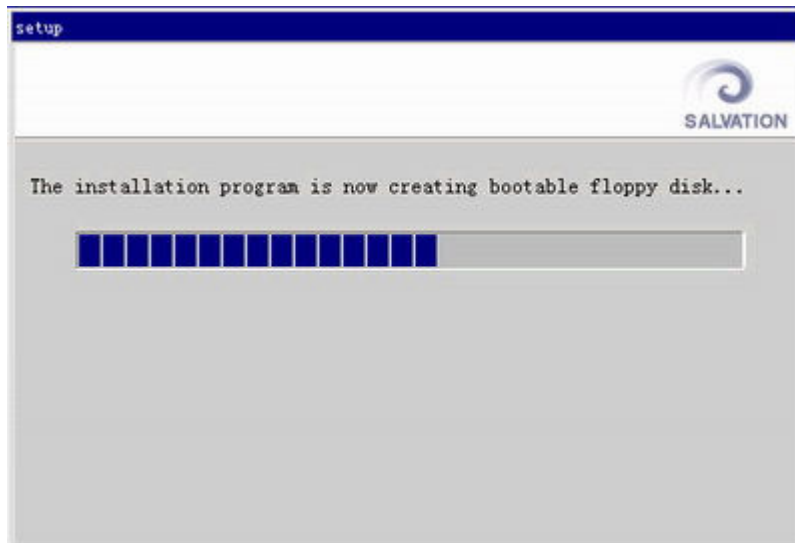
Please insert the floppy disk prepared into the floppy disk drive as required. Click the "Next" button to enter the next step when you are ready.

3、Start Installation

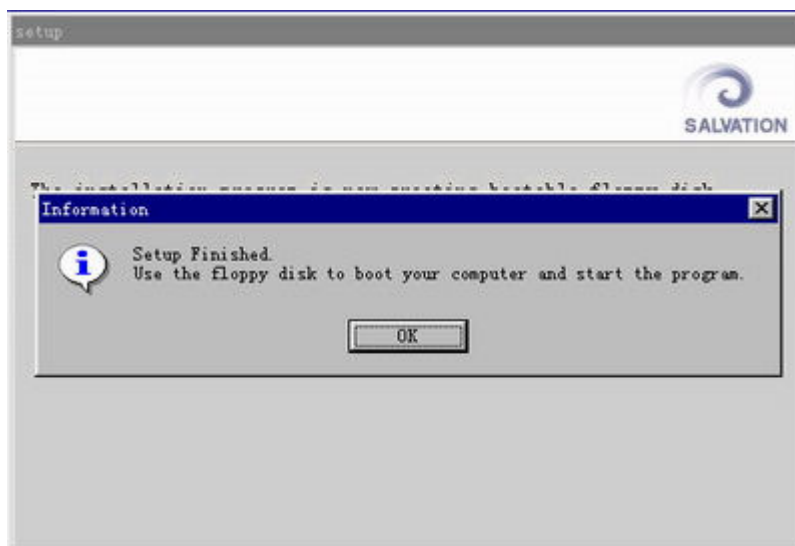
The installation program starts to copy the files necessary for the installation:



The installation program begins to create a bootable floppy disk:



The Installation of Salvation HDD Scan and Repair Program FDD edition Ver3.0 has been finished:



The Installation Process

CD-ROM Version

Use a DATA CD burning software (i.e. NERO) to burn image. In the next step we use NERO for an example to show how to create a bootable CD-ROM.

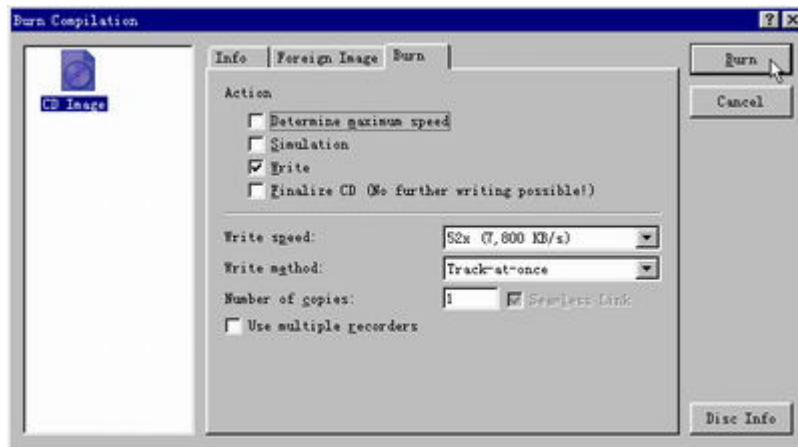
First select NERO “make data disc” function and select “burn image” from the menu “Recorder” as the following picture showed:



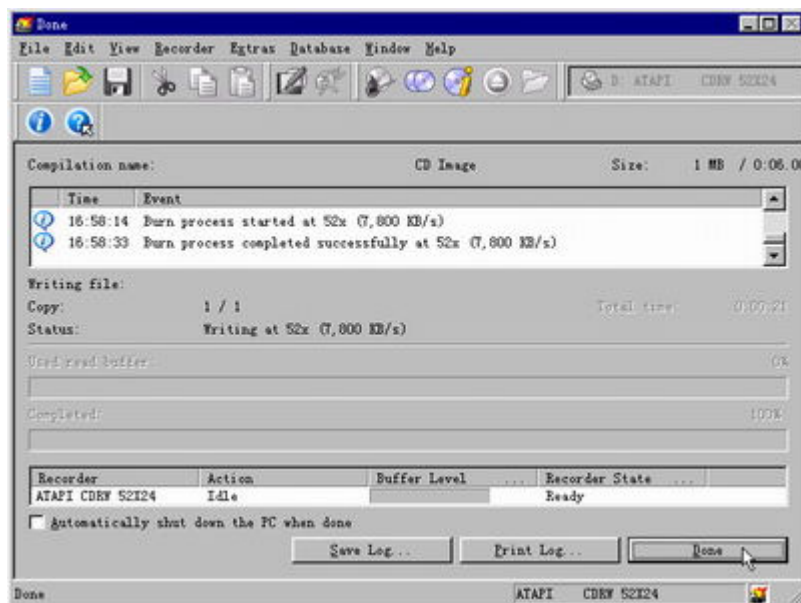
Select the CD-ROM version installation program (that's an ISO package) setup.iso.



There will be a window for Burn Compilation, we could use the default setting for burning, just click “Burn” to continue.



Click the “Done” button on the bottom right corner when the burning is finished, NERO will eject the CD-ROM automatically.



The Installation of Salvation HDD Scan and Repair Program Ver3.0 CD-ROM edition has been finished.

Before Using the Program

- 1. Please make sure that your HDD to be scanned and restored has been connected to the computer exactly as the program required:**
 - I. The HDD must be connected to IDE Primary.**
 - II. Set the HDD to be the IDE Primary Master device.**
- 2. Meanwhile, make sure you have set your computer to boot from FDD (or boot from CD-ROM Drive if you use a CD-ROM version).**

Start Using the Program

1、Loading Program

Insert the bootable Floppy Disk (or CD-ROM) created then start up the computer, the Salvation Scan and Restoration Program will load and run automatically, there will be window showing the loading message appears:



Once the program loaded, system will show you some important information. You must read it carefully.

After you finishing the reading and go forward, you will enter the program console as you can see below:



Salvation Scan and Restoration Program has a very intuitionistic operation interface. Just highlight the function you need from the menu, the application will do professional scan

and defective sector restoration to the target HDD automatically and rapidly.

2、 Program Console

1. Defaulted Scan

The system will do the scan based on the default settings (from 0% to 100%). This scan mode could do defective sector scan to all sectors of the HDD but meanwhile is time-consuming.

2. Advanced Scan

You could set the scan range by input the starting point and the end point. In this case, the system will only scan the sectors within the range set and save your time spent on scanning.

3. Defects Map

Any physical defective sector found during the scanning will be mapped here and make it to be clear at a glance.

4. Fast Restore

Provides two mode of restoration: Manual one and Intellective one. Manual Restoration allows users to set a range for the restoration operation; Intellective Restoration can automatically do the restoration to the defective sectors found during HDD scan (because Intellective restoration is based on the HDD scan result, if you have not run HDD scan or there is no defective sector found through HDD scan, there will be no effect using the Intellective Restoration).

5. User Help

Here you could acquire information about other available resources of Salvation.

6. Exit Program

Exit Salvation HDD Scan and Repair Program Ver3.0 safely.

Technical Support

If you encounter any problem during installing or using Salvation Scan and Restoration Program, please visit us at <http://www.salvationdata.com> for FAQs or quiz on the forum; you could also send Email to salvationdata@hotmail.com or call us at 0086 28 85211099 (GMT-8 from 9:30 am to 5:30 pm) for supports. We will do our best providing service to you.

If you are a registered user of Salvation products, please quote us your information when you face us for services, we will treat it as top priority.

Thank you again for using Salvation product.