



# iBin

by Augusto Croppo

First Toy Lab <sup>TM</sup>

Version 2.9

Compiled in AutoHotkey language code

## USER GUIDE

Copyright (C) 2009 Augusto Croppo. Permission is granted to copy, distribute and/or modify this document under the terms of the GNU Free Documentation License, Version 1.3 or any later version published by the Free Software Foundation; with no Invariant Sections, no Front-Cover Texts, and no Back-Cover Texts. A [copy of the license](#) is included in the section entitled "GNU Free Documentation License".

# SUMMARY

## **1. Requirement**

## **2. Installation**

## **3. Using the iBin**

### **3.1 The Erasing Methods**

### **3.2 Menu in the System Tray**

### **3.2 Managing Dumped Data**

### **3.3 Customizing Options**

### **3.4 Tools**

## **4. Features**

## **5. Support and Feedback**

## **6. Terms and Conditions**

## 1. REQUIREMENT

The iBin software is a full portable program to work from any removable device in any Windows operate system and language environment.

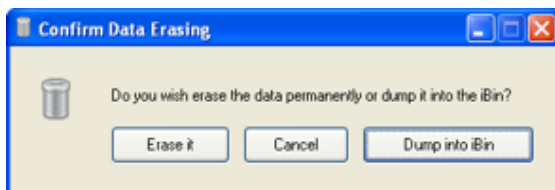
## 2. INSTALLATION

Just unzip the compacted file and extract the *iBin.exe* file into any removable device folder. Run the *iBin.exe* and follow the instructions. The iBin will create the container folder and the necessary files system in the device's root folder. Once the installation is done, the iBin work in the operate system background.

## 3. USING THE IBIN

### 3.1 THE ERASING METHODS

Just delete any file or folder using the *Del* key or a command in the right-click menu; the iBin will detect the action and offer the option to dump the files. The data selected can also be dumped or erased using **hotkeys**.



The iBin keep a track of every file and/or folder dumped, to be easily restored when necessary. If the dumped data is already present in the container, its name is modified.

#### Hotkeys



Directly **DUMP** the selection



Directly **ERASE** the selection



**UNDO** the last dumping action

## 3.2 MENU IN THE SYSTEM TRAY

Hit one click over the icon in the tray bar to open the **Dumping Management**.

A right-click opens the menu options:

**Working in [:\]** – Indicate the working drive letter. Open the device root folder.



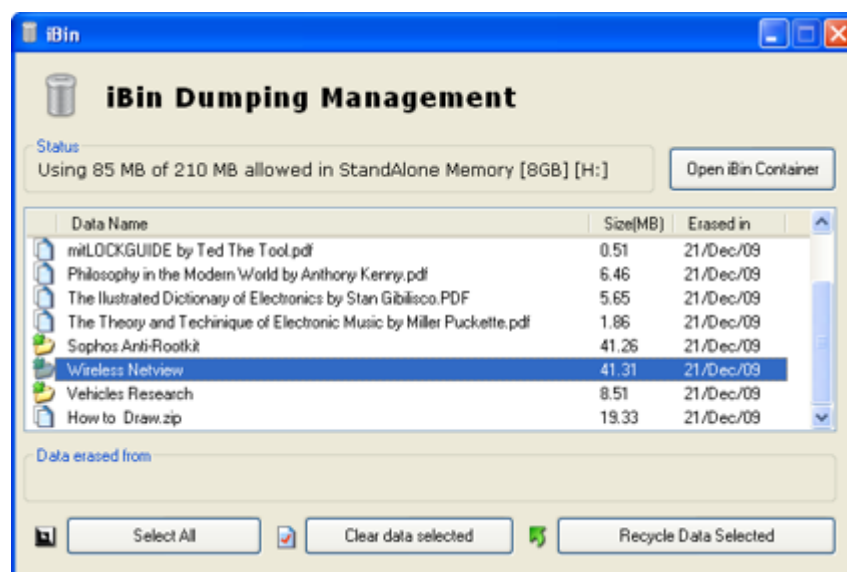
**Open and Clean the iBin Container!** – Quick open the iBin container folder or empty the whole content inside it. *Note: the data cleaned from the iBin is permanently erased from the device.*

**Undo Last Dump** – Restore the last dumped data to its original source path.

**Dumping Management and Custom Options** – Open the windows to manage and customize the iBin system.

**DO NOT REMOVE THE DEVICE WHILE THIS ICON IS IN THE TRAY BAR:**  It means the iBin is busy erasing data. The Dump System is disabled until the erasing process end.

## 3.3 MANAGING DUMPED DATA



Use the **Dumping Management** option to restore or clean the device's dumped data. The window console offers a selection list with multiple choice. The *Ctrl* and *Shift*

keys can be hold to select parts of the list. Files and folders are sorted with different icons, and the space used by the iBin container is stated above the selection list. Quick open the iBin folder to view the data content by pushing the button in the top right corner. Use the buttons in the bottom to recycle or clear the data selected. Any data drop manually inside the iBin container is recycled after a destination folder is chosen by the user.

### 3.3 CUSTOMIZING OPTIONS

The **Custom Options** option offers to any user few simple resources to enhance the use of the iBin software:

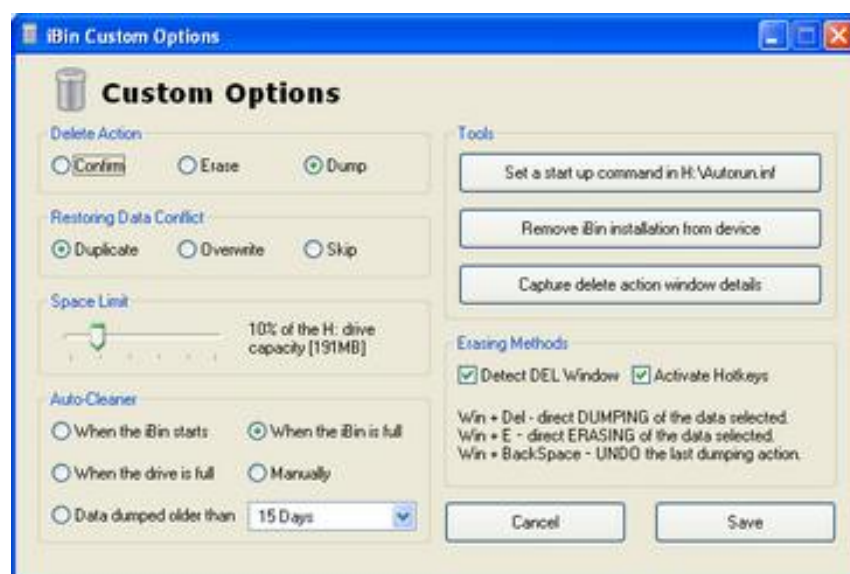
#### Delete Action –

**Confirm** the dumping or the erasing of the data selected with a window or; **Erase** or **Dump** the data directly, without confirmation.

**Restoring Data Conflict** – If the data being recycled is already present in the original path, the iBin can **Duplicate** the data, **Overwrite** it all content or just **Skip** the restoring process.

**Space Limit** – Define the size limit of the iBin container between 1% and 50% of the device capacity.

**Auto-Cleaner** – Let the iBin clean the dumped data when necessary using four methods: **When the iBin starts**; **When the iBin is full**;



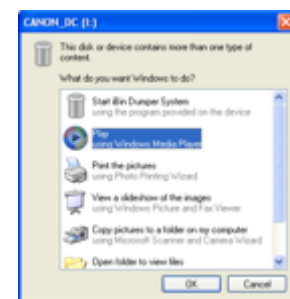
**When the device is full, or; When the data dumped is older than a** pre-dfined number of days.

**Detect DEL Window** – Activate or deactivate the background system which notice the confirmation window used to delete data.

**Activate Hotkeys** – Activate or deactivate the pre-defined **HOTKEYS** to solve compability issues. The hotkeys always operate in silent mode, without use of graphic interface.

### 3.4 TOOLS

**Set a start-up command in x:\Autorun.inf**– Use this tool to prepare the starting up device's file to run iBin every time the device is connected. *Note: the Windows operate system hosting the device must allow the auto execution to this tool efectively work.*



**Remove iBin installation from device** – Uninstall completely the iBin system files and the remove the iBin container folder. *Note: this tool can not work properly if the user do not own enough rights to use the Windows temporay folder.*

**Capture Delete Action Window Details** – Calibrate the iBin Dump system to detected the title and size of the default window used to confirm the delete action triggered by the operate system.

## 4. FEATURES

The iBin software is fully portable, supporting relative path to dump and recycle files. It also adapt itself to any language and version environment to detect the delete action. This capability enable the user connect in any computer around the world with a Windows operate system and safely dump the selected data.

The iBin also:

- Do not dump file or folders with total size bigger than the free space in the iBin container.
- Keep the own system files hidden (*iBin.ini* and *dumpedlist.iBin*) to avoid accidental lost.
- Index the dumped data list when starts and every time the Dumping Management is open or close.
- Run the Auto-Cleaner just when start to not interfere in the user work session.
- Close the Dumping Manager window when dumping or erasing files and folders.
- Do not dump or erase files attributed as system or temporary. Do not allow dump or erase the iBin container and the system files while the Dump System is working in the background.
- Sort files and folder based in the marked attribute, which avoid conflict of name and original path.
- Detect if a folder is marked as archive and modify the attribute to erase or dump the folder.

## 5. SUPPORT AND FEEDBACK

The First Toy Lab do not offer support or guarantee to the iBin software, but widely accept any feedback about possible bugs encountered when using it.

<http://sourceforge.net/project/iBin/>

<http://www.autohotkey.net/~FirstToyLab/>

## 6. TERM AND CONDITIONS

This work is licensed under the Creative Commons Attribution-Non-Commercial-No Derivative Works 2.0 UK: England & Wales License. To view a copy of this licence, visit <http://creativecommons.org/licenses/by-nc-nd/2.0/uk/>.