

# Ingelek Friend To Friend files sharing

F2F lets you to share files in a closed group of friends. Works without servers and ensures that the communication is absolutely safe between the peers. Uses SSH v2 protocol to encrypt the data and nobody alien to the group can see nothing that you have, or you are doing, with this program.

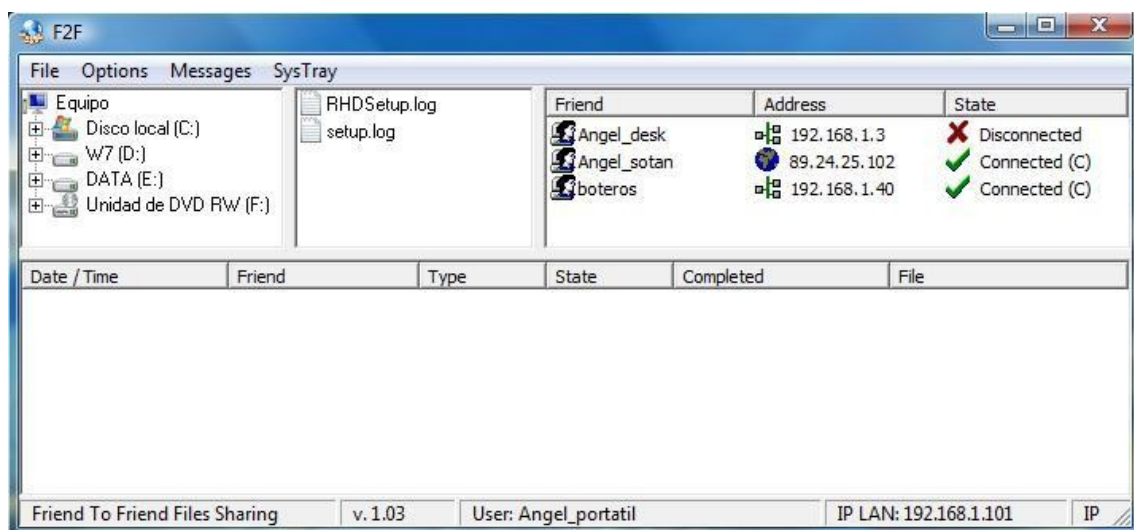
With F2F is very easy to navigate your computer and simply drag and drop files to your friends. That process creates an upload task for each file you will send. Also you can see the shared folders of your friends to download files of them.

The tasks can be interrupted and continued as many times as needed. Don't worry if you turn off your computer, or your friend is temporally off-line. As soon as possible return to be connected the tasks will continue.

F2F is oriented to send and share private content that are too large to be sent in a short space of time by other ways.

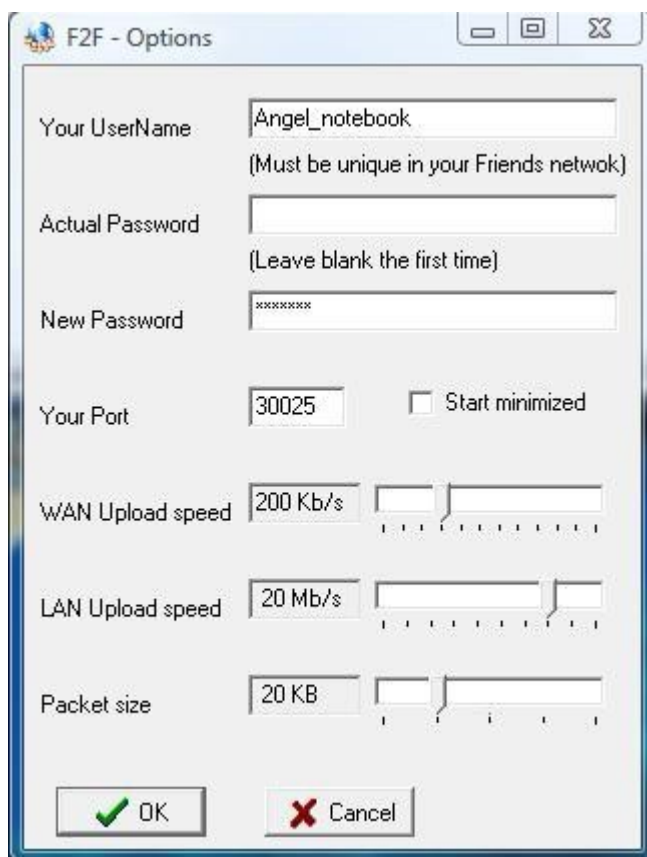
Each host acts as client and server simultaneously. All of them try to establish contact with the others. The first connection succeeded between two hosts indicates which of them acts as client and which as server. For this reason, at least one of the two must open the TCP port to his computer if operates behind a NAT router. The default port used by F2F is 30025. Open the port in all hosts is recommended. Open the ports are absolutely necessary to communicate hosts without using external servers.

The way to add friends to your host is exchanging "FileCards" that F2F can generate and import. This is because every host needs to have the user names and passwords of his friends, but the user should not know them to avoid to impersonate another.



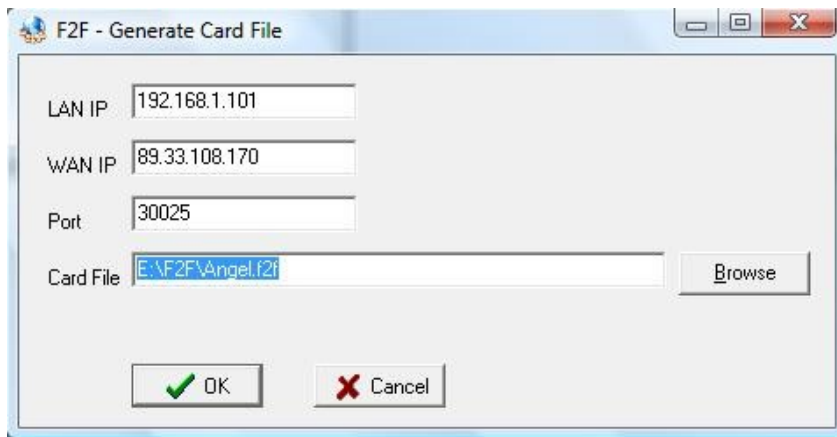
## Starting up F2F

The first time you run F2F you must configure your settings. The options window will appear automatically when the program starts. Here you must configure your user name and your password. The name must be unique in the group of friends. Be careful with this issue or malfunction will occur if you have more than one friend with the same name in your host. Write your password in the “New password” edit box. You can choose the TCP port if the default 30025 is not possible in your case. Also you can adjust the upload speed both for WAN and LAN connections. WAN is for friends who are beyond your router (over Internet) and LAN is for those who are on your same network. Packet size can affect to the performance of your computer. To calculate the upload speed F2F plays with the packet size and the interval to send the packets. 20KB is usually a good relation between these two parameters.



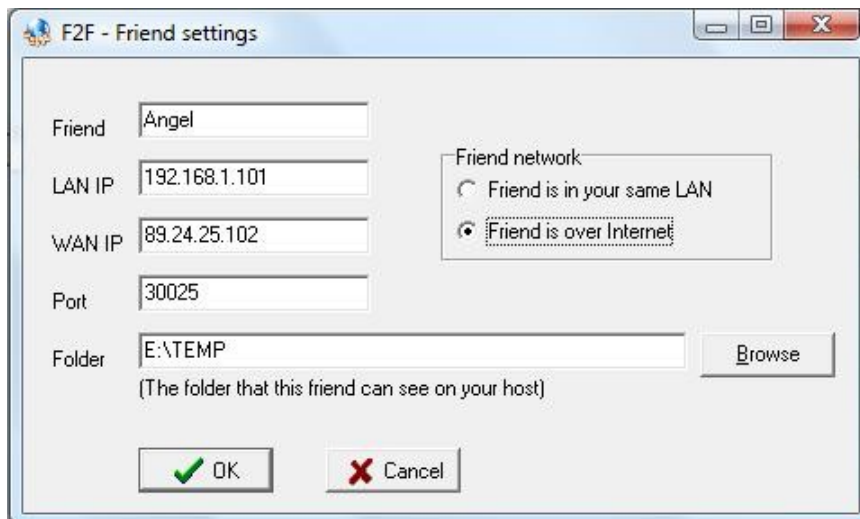
Once you have the program running you need friends to share files. As mentioned above this process is quite simple exchanging “CardFiles”.

Go to “Files” menu and click on “Generate CardFile”. F2F puts your IP addresses (LAN and WAN) and your TCP port automatically, but you can modify them if needed. Usually you should not modify nothing here. Notice that domain names are allowed as addresses if you have any. In example, you have a dynDNS virtual domain because you have a dynamic public IP. Then write your domain in the WAN IP edit box instead of the address. “Card File” indicates the file name and place to generate.



Now you must send this “CardFile” to your friends so they can add you as a friend. Obviously you need the “CardFiles” of your friends to add them too.

To add friends to your host click on “Files / Import CardFile” and select the desired f2f file.



Here you must select if this friend is in your same LAN, in example in your home network or, if it's over Internet. This selection indicates what IP address is used to reach it (LAN or WAN). Also you must define what folder this friend can see in your host. He will able to download files from this folder and his uploads will also be placed here. A way to do groups of friends can be setting the same folder to the members of the group.

## Using F2F

This program is very easy to use. To send files simply navigate with the integrated explorer and drag and drop files to any friend. Each file to send generates an upload task that can be monitored in the tasks window. If the friend is disconnected at this time, the tasks will be in “Start” state until the friend becomes connected.


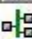







To download files double click over a connected friend. This opens a window showing the contents of the shared folder that this friend has for you. Here you can double click over the desired files to download them. You can see the download tasks also in the tasks window.

Doing right click over a friend opens a popup menu with some actions. They are too easy to understand and no explanation is necessary for them. Tasks have also a popup menu with easy to understand actions.

When the friends are connected the tasks are in “Transfer” state. In the tasks window you can see interesting information about them, like the size of the files and the amount of data transferred. Any of the both peers can pause, resume and cancel tasks. Pause and resume can be useful if you want to give more bandwidth to priority tasks. When some friend is disconnected his tasks becomes in “Wait” state. Don’t worry with the transfer interruptions, F2F ensures the integrity of the files even if some host has communications problems, power failures, etc.

Well as transfer files, F2F can also serve to do chat with your friends and send instant messages. If you try to send a message to an unconnected friend, this will create a special upload task with the message content. As any task, you can cancel it if finally you decide do not send the message.

If you see in the friends window an state icon with an exclamation mark inside a red circle, this means that the upload speed is reaching the limit of your bandwidth line. There is not problem with the transfers in this condition but you should have in mind that other applications or computers of your network can go very slow because F2F is using all the bandwidth available. It’s recommendable to reduce the upload speed from the “Options” window if you see this icon.

Friend	Address	State
 Angel_desk	 192.168.1.3	 Disconnected
 Angel_sotan	 89.24.25.102	 Connected (C)
 boteros	 192.168.1.40	 Connected (C)

In the state column is also indicated if your host acts as client (C) or server (S) for each friend connection.

F2F generates a log file (F2F.LOG) which records events like connections, disconnections, tasks creation, etc. It can be useful to track the activity of your friends.

### **Donationware license**

- This software is fully functional and you can use it freely for any purpose, private or commercial. You don't have obligation to pay nothing, but you can help us to improve it, and to follow developing more free software, by making a small donation of only 5€ to our PayPal account.
- To make the donation, please contact first with us sending an E-mail to: [info@ingelek.com](mailto:info@ingelek.com)
- We consider registered users those who have made the donation.
- Registered users are able to notify functionality problems, bugs, or even suggestions to improve the program. We will do our best to serve them.
- Only in some cases we can provide the source code of our programs. Ask us before to register if this is imperative for you.
- This program is provided "as is" and the authors do not accept any responsibility that may result from its use, or for the proper peration of it. So there isn't guaranty of any kind.
- Ingelek ensures that its programs do not have backdoors, or performs any action deliberately, that may affect to the safety of your computer.
- Please, distribute our programs to your friends. As more people uses them, more happier we will be

## **Revision history**

### **v. 1.00**

- First release

### **v. 1.01**

- Improved management of the bandwidth limit condition.
- Upload and download speeds status bar.

### **v. 1.02**

- Bug fixed. Memory leaks occurred due to the incorrect sockets library used. This caused the application to crash by out of memory error after several hours of operation.

### **v. 1.03**

- Possibility to send instant messages to unconnected friends generating special upload tasks.

### **v. 1.04**

- Estimated time left indication for each task.
- Prevents that more than one download task may write to the same local file.
- Some minor improves.

### **v. 1.05**

- Bug fixed. File access errors produced when the files are used by other applications. This resulted in improper tasks cancellations.