

# Invantive Composition

## *Getting started*

*Invantive BV*



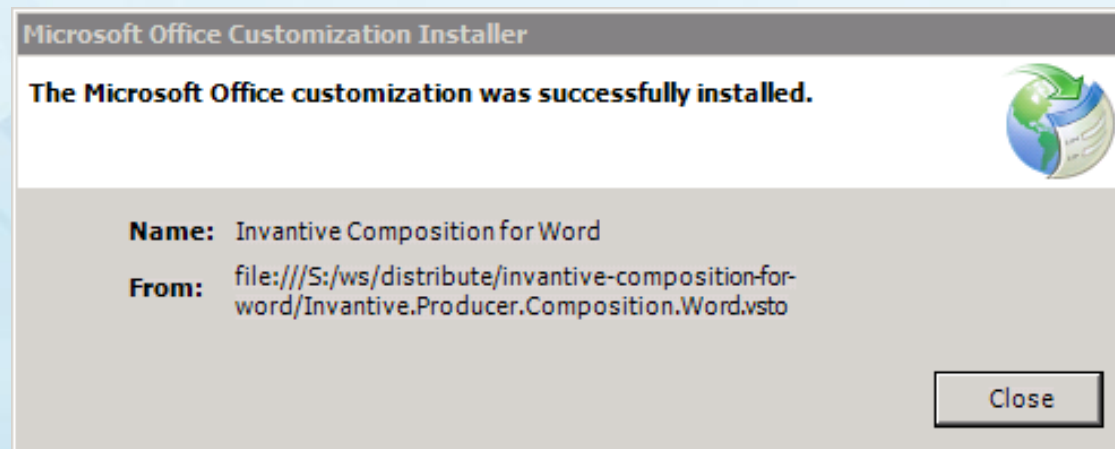
# Steps

- *Install*
- *Configure*
- *Run*

# Install



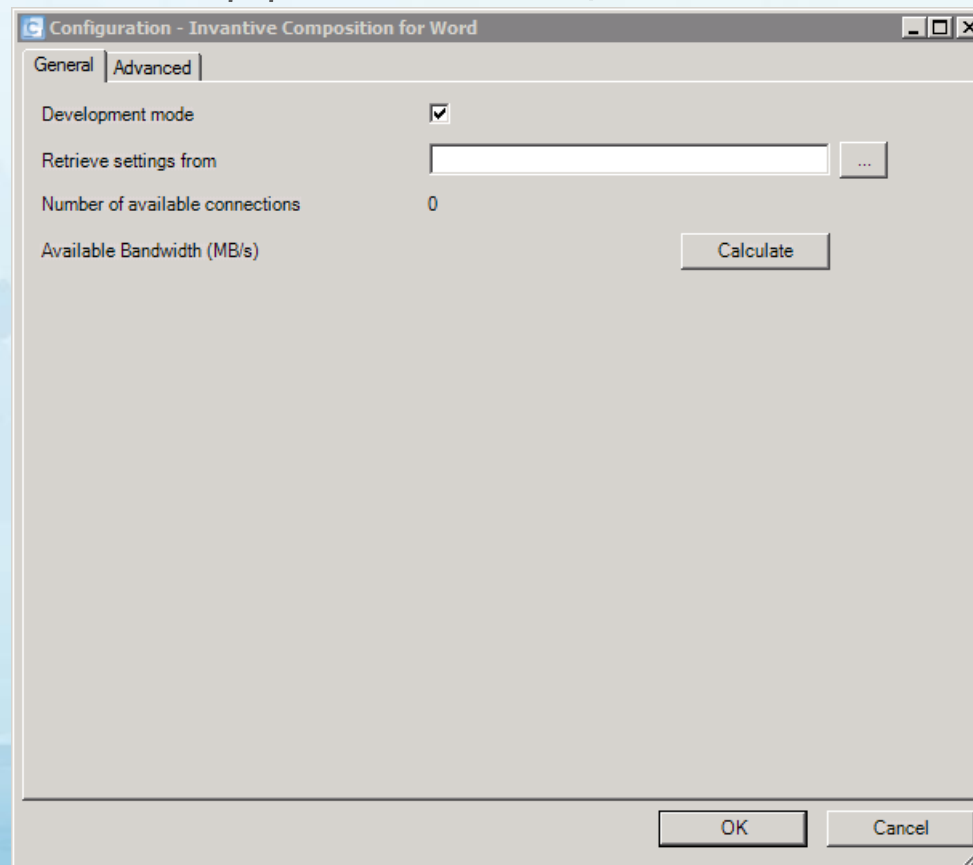
- *Double click setup.exe.*
- *When needed, it will request you to install .NET 4.5.*
- *Wait for installation to complete:*



# Configure



- *Start Microsoft Word.*
- *This window appears the first time:*



# Configure

- *Create a configuration file settings.xml somewhere.*
- *Complete sample on next slide.*

```
<?xml version="1.0" encoding="utf-8"?>
<connections>
  <group name="Samples">
    <connection name="NAME" authentication="Database">
      <database connectionString="Data Source=SERVER\INSTANCE;Database=DB;Pooling=false"
provider="System.Data.SqlClient" />
    </connection>
  </group>
</connections>
```



# Configure



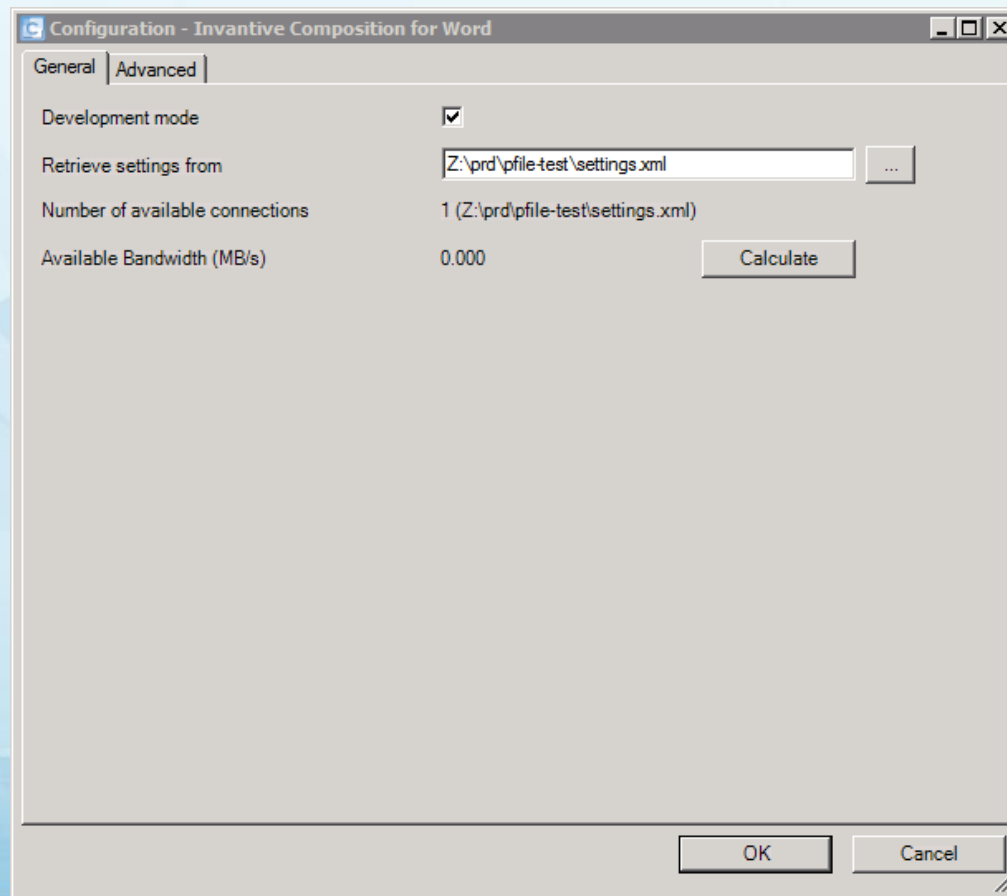
- *Such as:*

```
<?xml version="1.0" encoding="utf-8"?>
<connections>
  <group name="Samples">
    <connection name="SQL Server @ sql2008r2 - direct, no failover" authentication="Database">
      <database connectionString="Data Source=server192\sql2008r2;Database=dotnetnuke702;Pooling=false"
provider="System.Data.SqlClient" />
    </connection>
  </group>
</connections>
```

# Configure

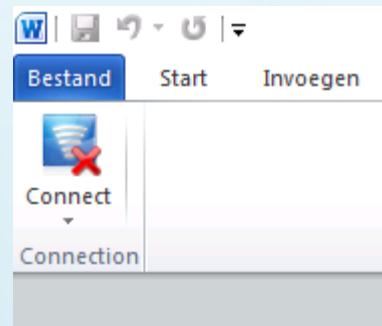


- *Choose this settings.xml in the window in Microsoft Word:*



# Configure

- *In Word, choose Connect in the Invantive Composition ribbon:*





# Configure

- Choose connection.
- Enter user name.
- Enter password.
- Click on 'Connect'.



20132.0.14002.7668 beta COD

Expires on 31-12-2014

(C) Copyright 2004-2014 Invantive Software BV, the Netherlands. All rights reserved.

Headlines

User name

dotnetnuke702

Password

••••••••

Connection

^ Samples - SQL Server @ sql2008r2 - direct, no failover

[-] Samples (1)

SQL Server @ sql2008r2 - direct, no failover

Remember password



Automatically connect



Connect

Cancel

Enter your connection data

# Run

- *Open the supplied sample document.*
- *And press Publish.*

# Run



## ■ *Publish sample:*

### Database:

User: <invantive:value-of expression="\$E{database:user}" />

Connection: <invantive:value-of expression="\$E{database:connection}" />

### Document:

Name: <invantive:value-of expression="\$E{document:name}" />

Location: <invantive:value-of expression="\$E{document:location}" />

Path: <invantive:value-of expression="\$E{document:path}" />



### Database:

User:

Connection: Samples\SQL Server @ sql2008r2 - direct, no failover

### Document:

Name: invantive-composition-overview-systemvariables (1).docx

Location: F:\temp\SYSTEM2\invantive\Invantive Composition for Word\models\invantive-composition-overview-systemvariables (1).docx

Path: F:\temp\SYSTEM2\invantive\Invantive Composition for Word\models

# Run



- *Or convert an existing to a template using 'Install Database' in the modeller ribbon.*
- *Start defining the model through 'Edit Model'.*
- *And insert building blocks.*
- *Manual is in the Help menu.*
- *Need help free of charge?*
- *Please call +31 88 0026599.*

A black silhouette of a person in a suit and tie, standing with their arms outstretched, holding up a large light blue banner.

# Invantive Composition

## *Getting Started*

*Invantive BV*

The background of the slide is a blue-toned illustration. It features a silhouette of a person in a suit in the foreground, holding up a banner. Behind them is a city skyline with various buildings, including a prominent tower on the left and a construction crane on the right. Several buildings are under construction, with visible scaffolding and structural frames. The sky is light blue with some clouds.