

Contents

1 Resume:	2
2 Preresiquites:	3
3 Setup:	3
3.01 Installing the program and start it.....	3
3.03 Configure E-Mail:	5
3.02 FTP setup:	7
3.04 Set interval and log:.....	8
3.05 Service settings.	9
3.06 Program password:.....	9
3.07 Exit	9
3.08 Save:	10
3.09 Restart:	10
4 misc:.....	10
4.01 Password settings on your PC:	10
4.02 What if my PC gets stolen?	10
4.03 Support:	11
4.04 Logfile Example:.....	11
4.05 Physical system overview:	11
4.06 Logical flow:	12
5 Disclaimer	13

1 Resume:

IPFetcher is able to mail and upload your external PC internet IP address.

This happens when the PC starts and are connected to the internet.

After that it will send the data on a schedule you set.

If your PC gets stolen, and is turned on with a connection to the internet, you will get its ip-address. Using that information the police can, together with the internet provider, pinpoint the exact physical address where your PC is located.

You yourself are often even able to find out who the internet provider is, and which town or area it is located. Give it a try on this link: <http://www.geoiptool.com/>

Here is my data. Located in Denmark in a city called Horsens. My internet provider is called "profiber" The IP is 87.104.182.167. The IP may change though, so it is important to give the information to the police as fast as possible. It varies how accurate you can narrow down the location, but the police will normally be able to get that information

The screenshot shows the website www.geoip.com with the following layout:

- Top Navigation:** View my IP information | More info about IPs | Firefox Plugin | Now online | In your Website
- Left Sidebar:**
 - Advertisement: ACCESS BLOCKED WEBSITES
 - Advertisement: ohosting Web - Reseller HOSTING as low as \$4
 - Form: Host / IP: [input field] View info
 - IP Information:
 - Host Name: 87-104-182-167-dynamic-customer.profibernet.dk
 - IP Address: 87.104.182.167
 - Country: Denmark 🇩🇰
 - Country code: DK (DNK)
 - Region:
 - City: Horsens
 - Postal code:
 - Calling code: +45
 - Longitude: 9.8735
 - Latitude: 55.8657
- Main Content Area:**
 - Header: New tool for your Web!
 - Map: A map of Europe with a red pin on Denmark. Map controls (Kort, Satellit, Hybrid) are at the top right. Map data is attributed to Google.
 - Footer: Joomla hjemmeside hosting ditmedie.dk/hosting. Fri Joomla support og videokurser 1-klik install., ugentlig backup. AdChoices
- Bottom Social Media Bar:** Taringai 12 | Tweet 171 | +1 117 | Synes godt om 573 | Сохранить 30 | HOSTING BY WIROOS

2 Prerequisites:

To use this program you must have an e-mail account or/and an FTP server.

If you do not know what an FTP server is, you can find some information here:

Easy: http://compnetworking.about.com/od/networkprotocols/g/bldef_ftp.htm

A bit more technical: <http://www.deskshare.com/resources/articles/ftp-how-to.aspx>

Quite technical: http://en.wikipedia.org/wiki/File_Transfer_Protocol

This program has been tested on Windows XP, Windows 7 and Windows 8.

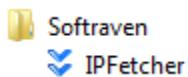
3 Setup:

3.01 Installing the program and start it

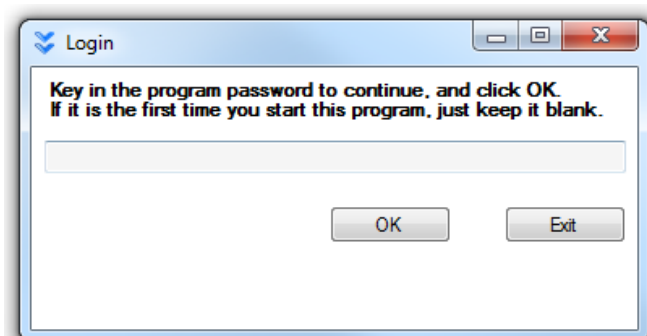
Start by unpacking IPFetcher.zip and install the two small programs in the zip file. IPFetcher.msi and IPFetcherBackend.msi. The setup is straight forward. Next – next - next etc.

It is called “IPFetcher” and its placed under “**softraven**” in your program group.

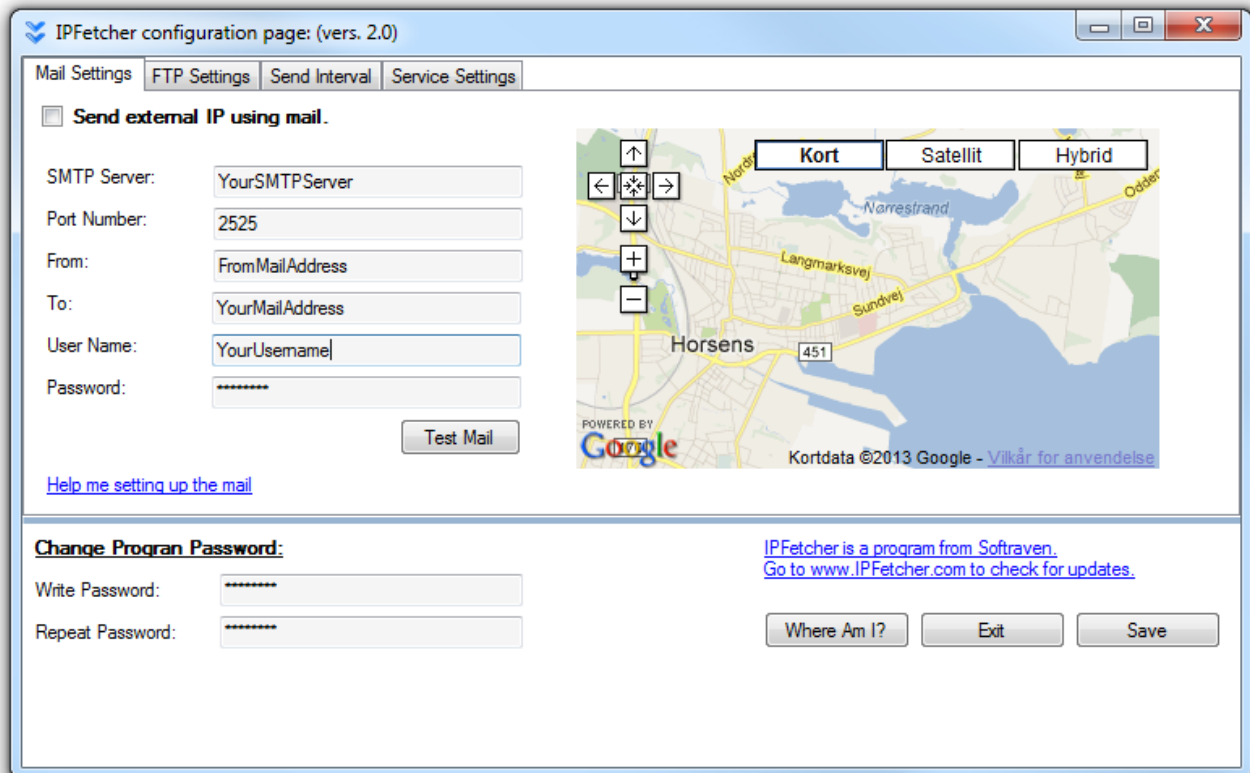
Activate it. If it is the first time you start it, you should leave the password blank, press “OK”



Login box:



IPFetcher User Interface



IPFetcher user interface consists of multiple tabs. The tabs represents different settings. You are able to configure Mail, FTP, Interval and service settings. On each page you will also notice a link in the left button corner. Click the link to get more help. If you are connected to the internet, there will be a map on the right side indicating the area your PC is in. Read more about this on

<http://www.ipfetcher.com/index.php/ipfetcher-2-0-help/65-where-am-i>

Please visit www.ipfetcher.com to check if you have the most recent version of IP-Fetcher.

3.03 Configure E-Mail:

IPFetcher configuration page: (vers. 2.0)

Mail Settings | FTP Settings | Send Interval | Service Settings

☐ Send external IP using mail.

SMTP Server:

Port Number:

From:

To:

User Name:

Password:

[Help me setting up the mail](#)

Change Program Password:

Write Password:

Repeat Password:

[IPFetcher is a program from Softraven. Go to \[www.IPFetcher.com\]\(http://www.IPFetcher.com\) to check for updates.](#)

You activate the Mail Setup page by clicking the tab “Mail Settings”.

Setting up E-Mail will cause IPFetcher to send an E-Mail at an Interval you set (Ref. tab “Send Interval”).

If the PC is not on internet when started, it will send the first e-mail as soon as it is connected to the internet.

You need the mail data information from your e-mail provider. It may be that you have already used this information to set up your e-mail client.

Send info using mail:

If you want to use the mail functionality it should be ticked. Otherwise IPFetcher will not send you mails.

SMTP Server:

Key in your FTP server name or IP.

Port Number:

Sometimes internet providers has 2 ports for you to use. Do not use 25 if it is one on them. Port 25 may be blocked by other internet providers than yours. If you only have port 25 you can go ahead and use this.

From:

It is not really important what you key in here, but it has to be a valid domain.

ThisIsFromIPFetcher@google.com will be a valid address since "google.com" is a valid domain.

When the mail is received the sender will be ThisIsFromIPFetcher@google.com, EVEN though you have not created that address. You can also put in your own e-mail address.

An address with an invalid domain, for instance xxx@kjpoilkli.com may work BUT mail servers often check for a valid domain, and you risk that the mail functionality fails.

To:

Key in the mail address you want the information sent to.

You can use your own normal mail, although I recommend that you use another address if possible.

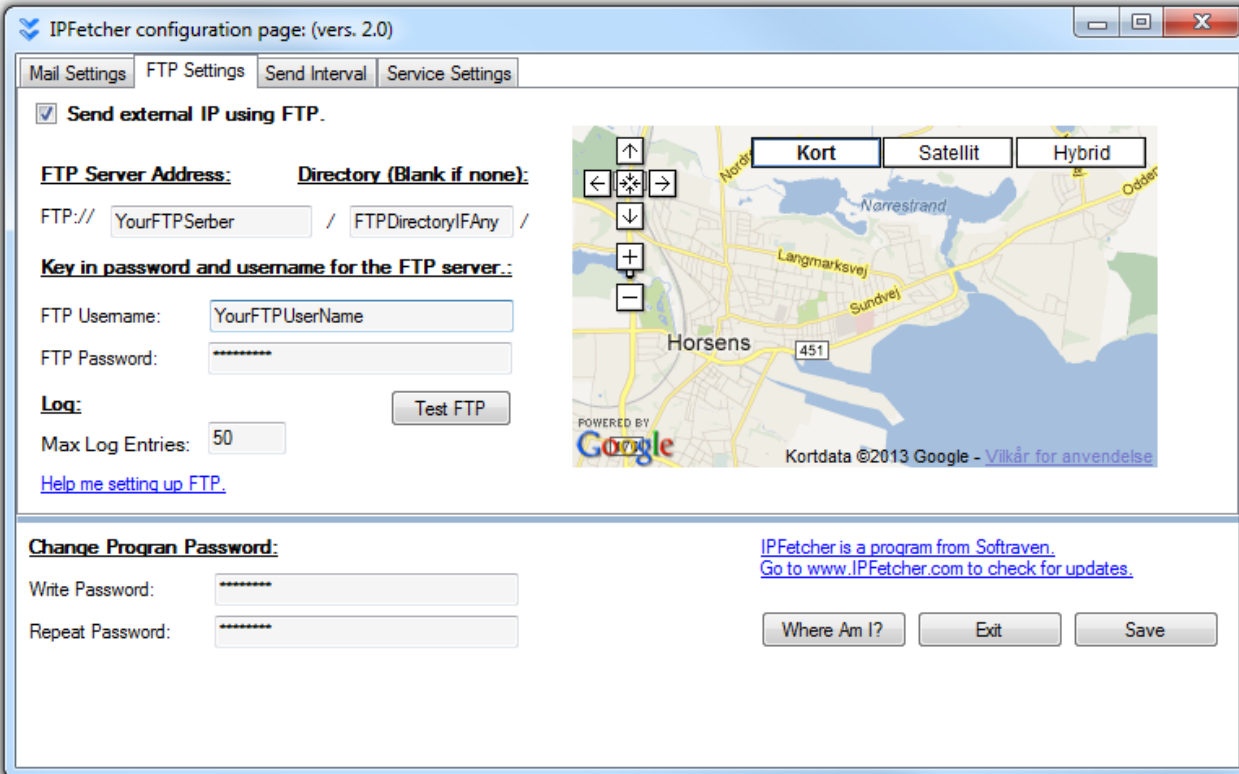
Username, Password:

Key in your login information for your e-mail.

When all the information is keyed in, you can test the configuration using the test button.

You will receive a small test mail if the settings are okay.

3.02 FTP setup:



IPFetcher configuration page: (vers. 2.0)

Mail Settings FTP Settings Send Interval Service Settings

☒ Send external IP using FTP.

FTP Server Address: **Directory (Blank if none):**

FTP:// YourFTPSerber / FTPDirectoryIFAny /

Key in password and username for the FTP server.:

FTP Username: YourFTPUserName

FTP Password: *****

Log: Test FTP

Max Log Entries: 50

[Help me setting up FTP.](#)

Change Program Password:

Write Password: *****

Repeat Password: *****

[IPFetcher is a program from Softraven.](#)
[Go to www.IPFetcher.com to check for updates.](#)

Where Am I? Exit Save

You activate the FTP Setup page by clicking the “FTP Settings” tab.

FTP Server Address and directory:

Key in the FTP server IP or URL, and a directory if you choose to. The directory must be created on your ftp server in advance. **The directory name is always case sensitive.**

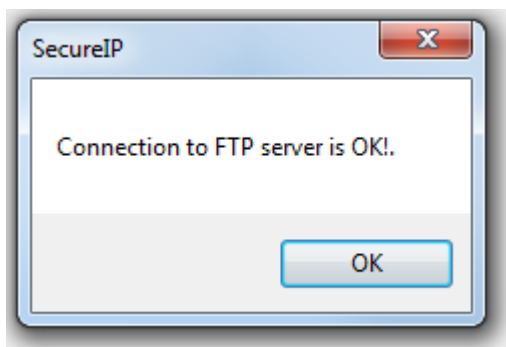
Even though username, password and ftp server information is stored encrypted on your PC, I recommend that you use an FTP account that has access to an area without any sensitive information.

FTP Username and Password:

Key in the account + password you use to logon to the FTP-Server.

Now you can proceed my clicking the “Test FTP” button:

The program will upload a file called FTPTestOk.txt to your server for verification, and also confirm that the connection is ok. You can just delete the file afterwards.



Max Log Entries:

Every time IPFetcher uploads your ip-data one line will be added to a log on your FTP server.

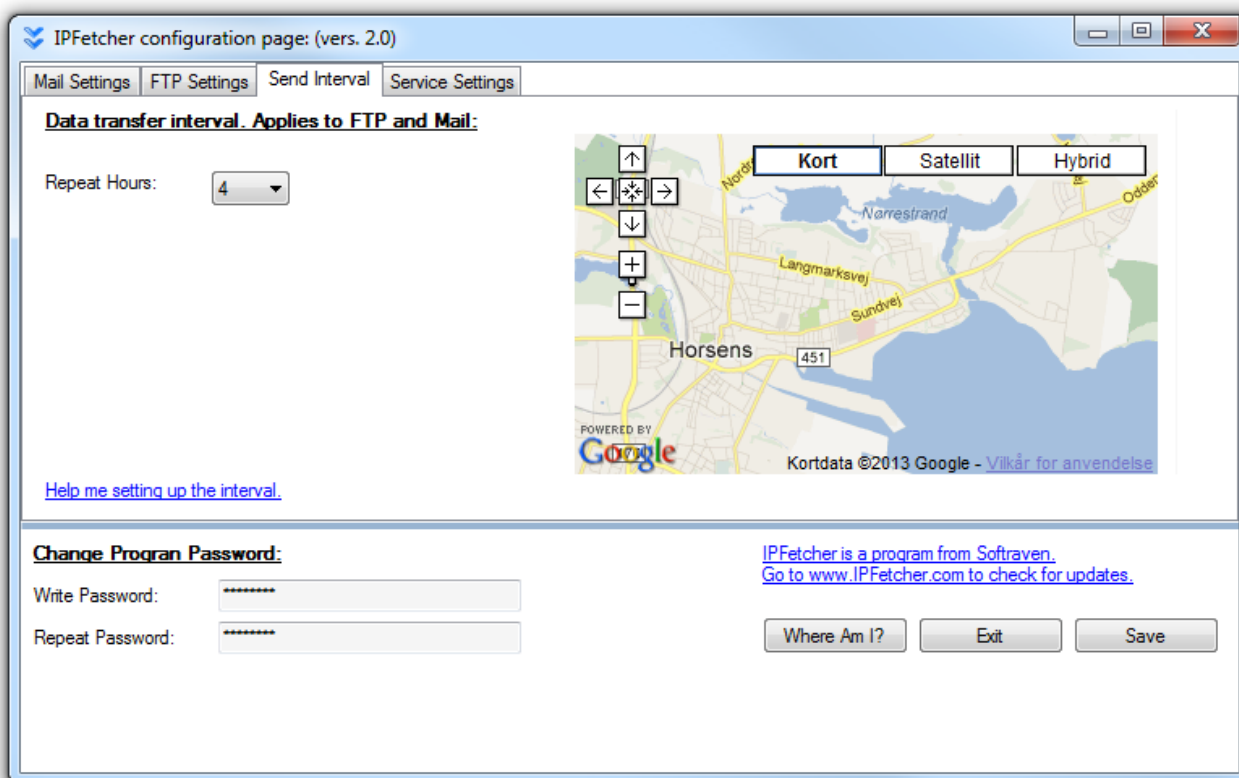
The log is named after your machine with an extension called .txt.

When the log has reached the by you predefined row count, it will be reset.

The old log will be renamed to <your machine name>_previousLog.txt.

I recommend to key in a high number, for example 50.

3.04 Set interval and log:



Choose data transfer interval:

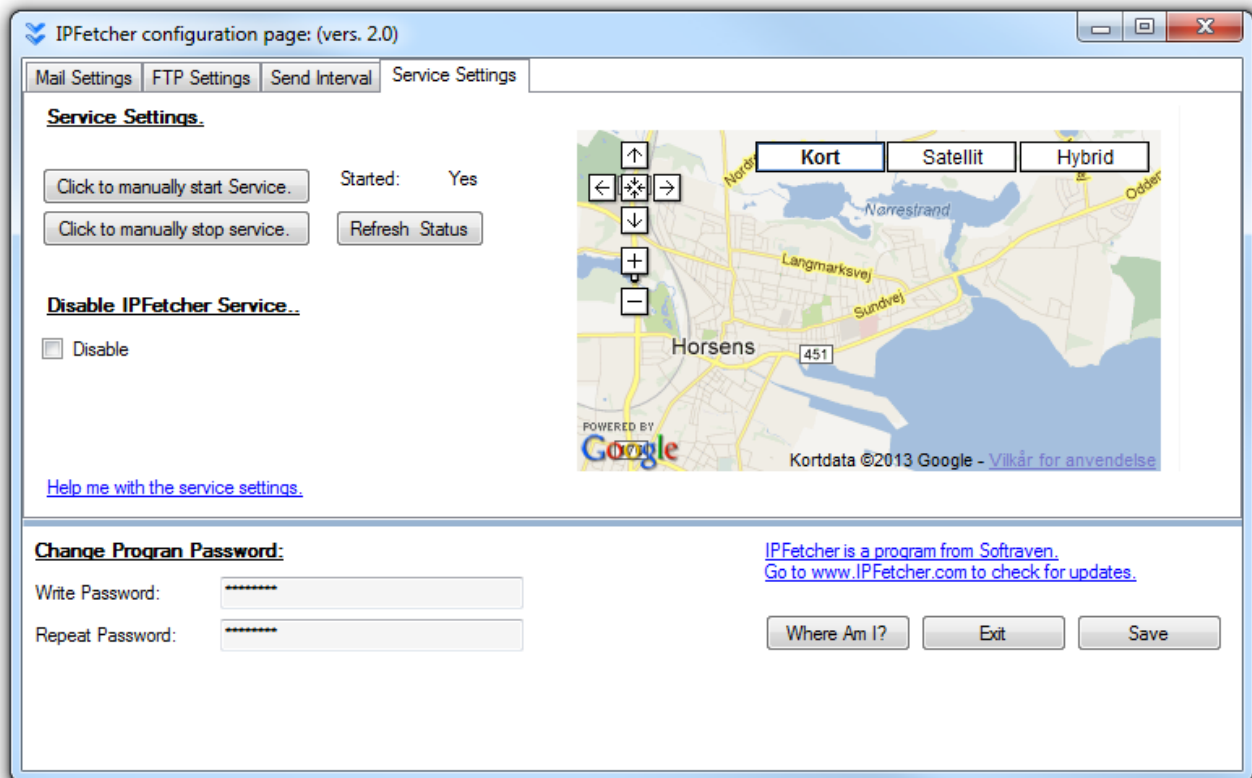
This is the interval in hours between the mails and/or upload to the FTP Server.

When the PC starts from scratch it will always mail and/or upload the IP when it gets a connection

to the internet. After that it will follow the schedule you set.

If the PC is started from hibernation or sleep mode it will not send a mail from the start, but it will continue sending according to the schedule you have set.

3.05 Service settings.



You activate the Service settings Setup page by clicking the button “Service Settings” to the left. You are able to stop and start the IPFetcher service. Normally there is no reason to stop it. It is also possible to disable the IPFetcher service. Hereafter the program will not be activated when you start your PC the next time.

3.06 Program password:

To prevent others from seeing your settings, or even figure out what this program does you need to key in a password to get access. This is set under “program password”. If you forget it, there is no way to login again!!! Be sure to remember.

3.07 Exit

Exits the program without saving changes.

3.08 Save:

Allways save the program settings. Some settings might not be active until you restart your pc, be sure to do that too.

3.09 Restart:

Restart the pc after completing setup.

When the pc has been connected to the internet a few minutes it will mail you the IP-address (If you configured the mail.) It send the data to the FTP Server (If you configured it The logfile is named: <your pc name>.txt.check. Open it and check if the IP data is logged.

In general you should always restart the PC upon changing the configuration settings. Some settings will not be active until you do.

4 misc:

4.01 Password settings on your PC:

The PC needs to be connected to the internet, therefore it is vital that thieves actually gets a chance to do this. It is not a requirement that a user logs on, but it is off course a requirement that it is turned on, and connected to the internet.

If you do not have any vital data, consider removing a logon all together. You have to evaluate if you want a chance to get your computer back and maybe even other stolen property, or to ensure that your data is kept save.

Also remember that it is technically quite simple to access data from another PC if the harddrive is not encrypted.

4.02 What if my PC gets stolen?

If your pc gets stolen you will need to access the log on your ftp server.

Tell the police that you have an IP-Address logger installed, and if the PC is connected to the internet you will supply them with an IP-Address.

The police are then able to pinpoint the exact address where your PC is located.

Beware that the external IP may change, normally it is provided temporarily by a "DHCP" server. Therefore it is vital to react as fast as possible when you have the IP.

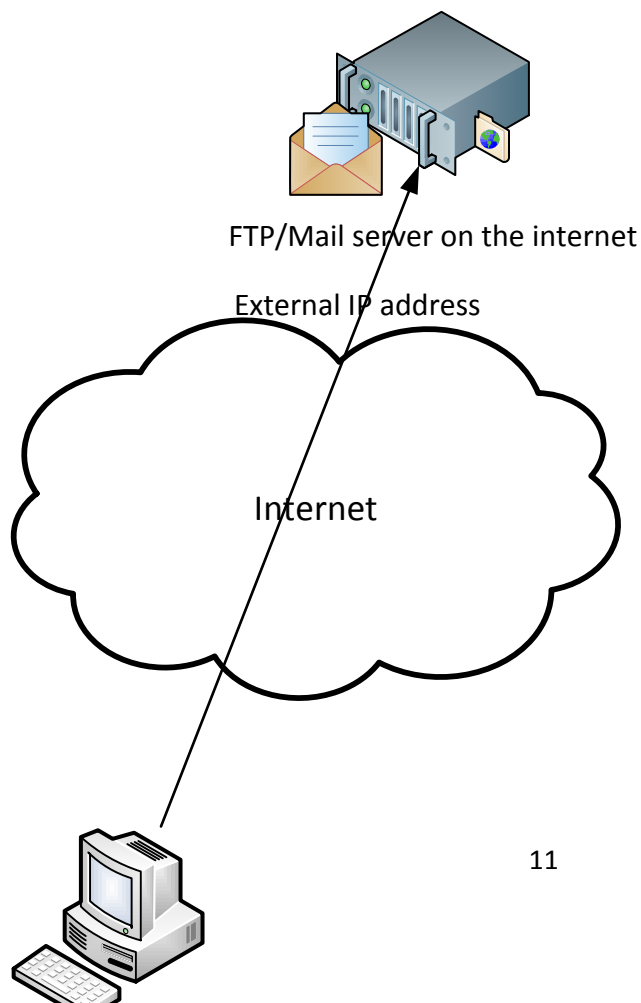
4.03 Support:

I can try to assist you if you have any configuration issues. Drop a mail to admin@ipfetcher.com and either send a screenshot of the configuration page, or a list of your configuration values. I do not want any passwords, and they should not be blank or easy to guess. If you are in that situation just send me some “dummy” values, and I can at least check if you have got the syntax right.

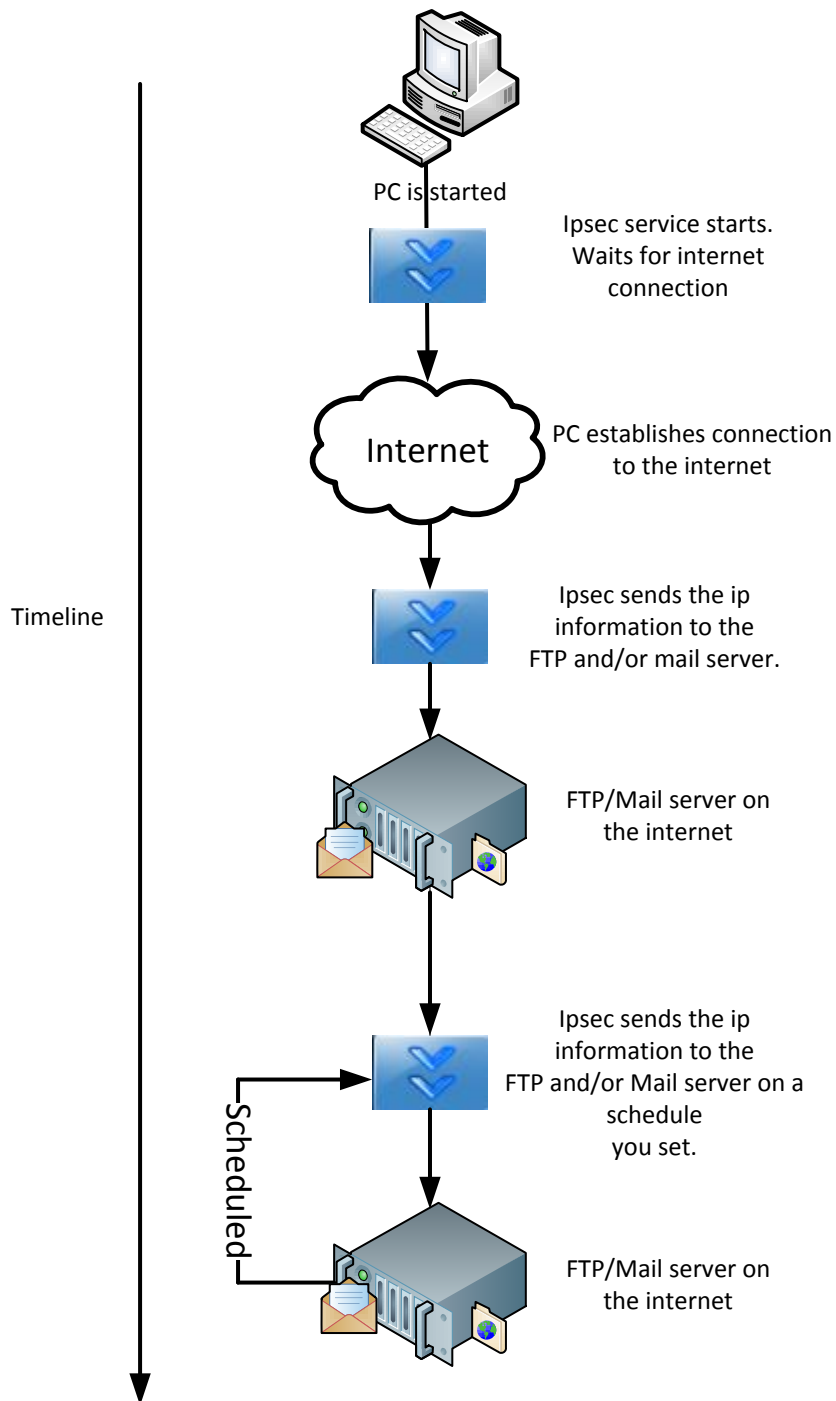
4.04 Logfile Example:

```
GIGABYTE_PreviousLog.txt - Notepad
File Edit Format View Help
LogFile created 14-02-2013 21:08:42
Logentry written: 14-02-2013 21:08:42 External IP was registered as: 87.104.182.167
Logentry written: 15-02-2013 04:29:48 External IP was registered as: 87.104.182.167
Logentry written: 15-02-2013 08:56:17 External IP was registered as: 87.104.182.167
Logentry written: 15-02-2013 12:56:17 External IP was registered as: 87.104.182.167
Logentry written: 15-02-2013 16:56:17 External IP was registered as: 87.104.182.167
```

4.05 Physical system overview:



4.06 Logical flow:



5 Disclaimer

This program is free for personal use. I distribute it “as is” I and cannot be hold responsible for:

1. Any malfunctions in the two programs, whatever it may be, or whatever consequences it may have.
2. The FTP and mail server you use
3. The IP returned is the correct one.
4. That the police will actually use the information
5. Support given
6. Any economic loss
7. In general any issues you may have that are tied to the usage of these programs.

Encryption:

All vital information that you set in IP-Fetcher are stored on the PC in an encrypted form.
It is not possible to break this encryption at all.

It has been tested on Windows XP, Windows 7, and Windows 8.

You may distribute this program as you please. I only ask you to place a direct link to my page:
www.ipfetcher.com.

If you want to use it company-wide please write to me on admin@ipfetcher.com, I will have to do some modifications, and it will be necessary for you to have an account on www.whatsmyip.com.
It is not expensive, but I do not want DynDNS to be bombarded with IP lookups from one company.

I urge you to report any failures you might encounter, or suggestions for improvement.
Ideas, criticism, good or bad and reports on issues are always welcome.

I thank you in advance to respect these few rules, it is very important to me, and the basis for the continuously free distribution.