
JnlpRunner Manual



Johannes Kellner (AEW-6-FW)

Versionsgeschichte

Version 1.0.0	30.09.2005	Johannes Kellner
First Version		
Version 1.0.0	10.10.2005	Johannes Kellner
Remarks and Corrections by F. Schmoll		
Version 1.0.1	28.11.2005	Johannes Kellner
Extension, ClassPath, UI-Design, Main-Class, Menu		
Version 1.0.2	30.11.2005	Johannes Kellner
Remarks regarding memory usage and settings (HEAP)		
Version 1.0.3	01.03.2006	Johannes Kellner
Changed directory structure for downloads. Implemenzed command line parameter		
Version 1.0.4	21.04.2006	Johannes kellner, Matthias Schorer
Internationalization		

© FIDUCIA IT AG
Fiduciastraße 20
76227 Karlsruhe
Telefon (07 21) 40 04-0 Fax (07 21) 40 04-45 00

Inhaltsverzeichnis

1.Disclaimer	4
2.Preface	4
3.Prerequisites	4
4.Installation and Start	4
4.1. Commandline start scripts (Windows, Unix)	5
4.2. Starting jnlpRunner from within Eclipse	5
4.3. Start using Windows Explorer or the Mac application	6
4.4. Commandlineparameters	7
5.UsingJnlpRunner	7
5.1.Generalsettings	7
5.2.Classpath-Extensions	9
5.3.SystemProperties	10
5.4.Savingsettings	11
6.Changes	12
6.1. Version 1.00-04	12
6.2. Version 1.00-03	12

1. Disclaimer

THIS SOFTWARE IS PROVIDED "AS IS" AND ANY EXPRESSED OR IMPLIED WARRANTIES, INCLUDING, BUT NOT LIMITED TO, THE IMPLIED WARRANTIES OF MERCHANTABILITY AND FITNESS FOR A PARTICULAR PURPOSE ARE DISCLAIMED. IN NO EVENT SHALL THE REGENTS OR CONTRIBUTORS BE LIABLE FOR ANY DIRECT, INDIRECT, INCIDENTAL, SPECIAL, EXEMPLARY, OR CONSEQUENTIAL DAMAGES (INCLUDING, BUT NOT LIMITED TO, PROCUREMENT OF SUBSTITUTE GOODS OR SERVICES; LOSS OF USE, DATA, OR PROFITS; OR BUSINESS INTERRUPTION) HOWEVER CAUSED AND ON ANY THEORY OF LIABILITY, WHETHER IN CONTRACT, STRICT LIABILITY, OR TORT (INCLUDING NEGLIGENCE OR OTHERWISE) ARISING IN ANY WAY OUT OF THE USE OF THIS SOFTWARE, EVEN IF ADVISED OF THE POSSIBILITY OF SUCH DAMAGE.

2. Preface

This manual describes the installation and usage of the XBF Tool JnlpRunner. This tool allows to launch any Java Web Start™ application, inside a currently running Java VM.

Running a Web Start application within another JVM allows to debug the application, which is not possible when the application is launched via Java Web Start™ directly.

Features:

- Can be configured to use an already existing Java Web Start™ Cache.
- JNLP-File can be supplied in URL- or file-format
- Can use Internet Explorer cookies for session based applications
- Additional classes can be injected into the class path of the application
- Can replace the start class, described in the jnlp-file with any other class having a main() method.
- Allows mixed usage of signed and unsigned classes and archives in the class path

Restrictions:

- Does not allow to download archives containing native code (DLL).
- Cookies supported only for Microsoft Internet Explorer.



Anmerkung

In case of bugs please notify the FIDUCIA XBF-Team:

johannes.kellner@fiducia.de

3. Prerequisites

JnlpRunner supports any platform with Java™ Runtime from version 1.3.1 onwards.

4. Installation and Start

On Windows™ and Unix unpack the jnlprunner ZIP-archive into any directory. On Mac OS X, simply activate the DMG-file and then drag the jnlpRunner application to your application folder.

4.1. Commandline start scripts (Windows™, Unix)

The start scripts for Windows™ and Unix are located in the subdirectory `jnlprunner/bin`. Start the script for your platform. Settings for initial and max heap size can be configured within the scripts. The Unix scripts might be used on Mac OS X as well.

4.2. Starting jnlpRunner from within Eclipse

Add the the archive `xbf-bootstrap__V1.0.4.jar` which is contained in the `jnlprunner/lib` directory to your project's class path. Then create a new start profile in Eclipse (Menu `-> Run -> Run...`) and name it "JnlpRunner".

After selecting and activating the checkbox "Include libraries when searching for a main class", you can select the startable class `de.xtc.bootstrap.BootstrapRunner` as Main class.

This profile will start JnlpRunner with a special class loader which separates the tool's archives from the application's archives, this prevents interference e.g. between different XML-parsers.



Anmerkung

Do not change the structure of the unpacked tool directory, because the class `BootstrapRunner` expects the other archives of the tool in the same directory from which itself was loaded.

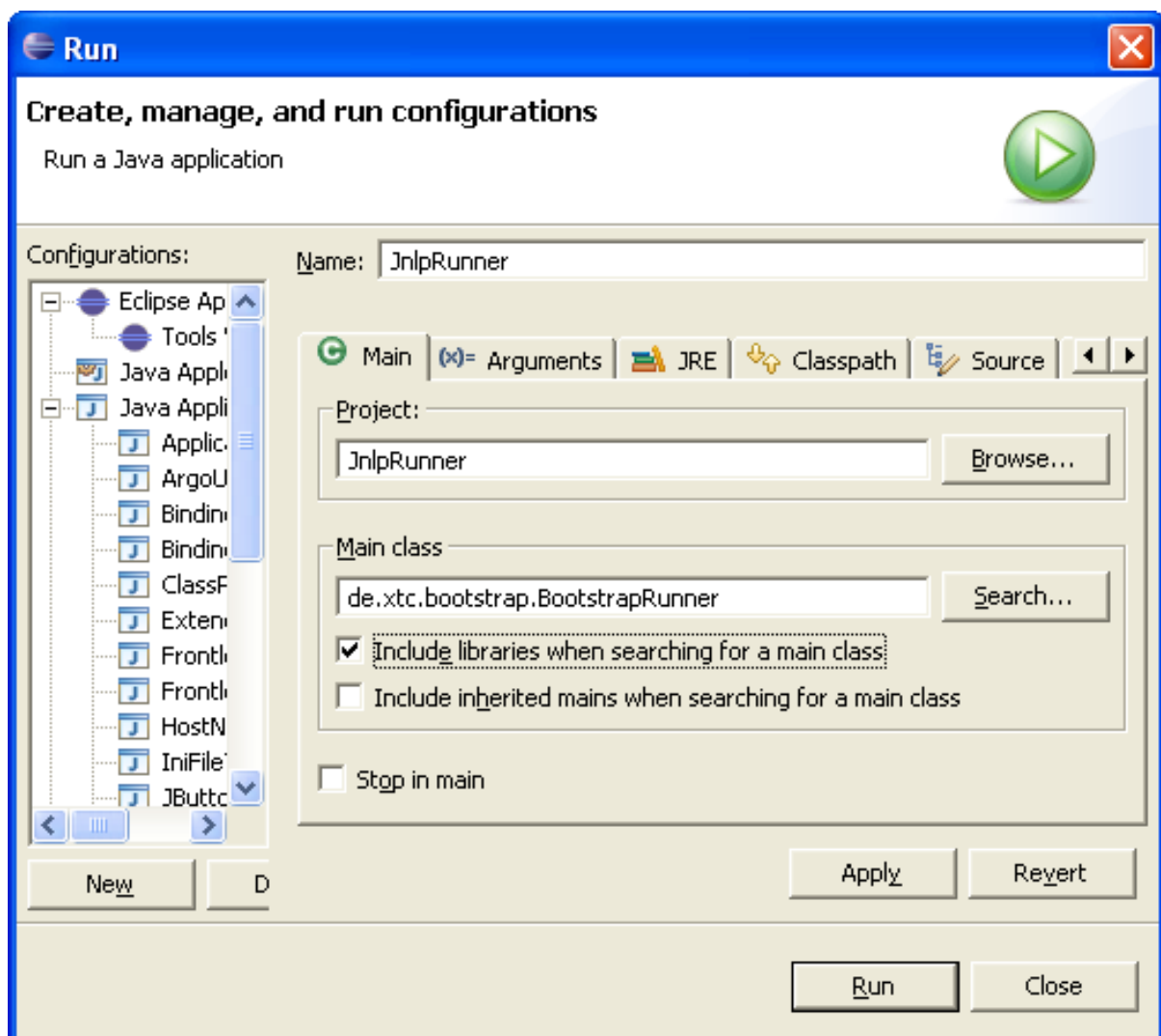


Abbildung 1. start configuration

To change the memory settings for the target application, switch to the "Arguments" tab and supply the correct -Xms and -Xmx parameters.

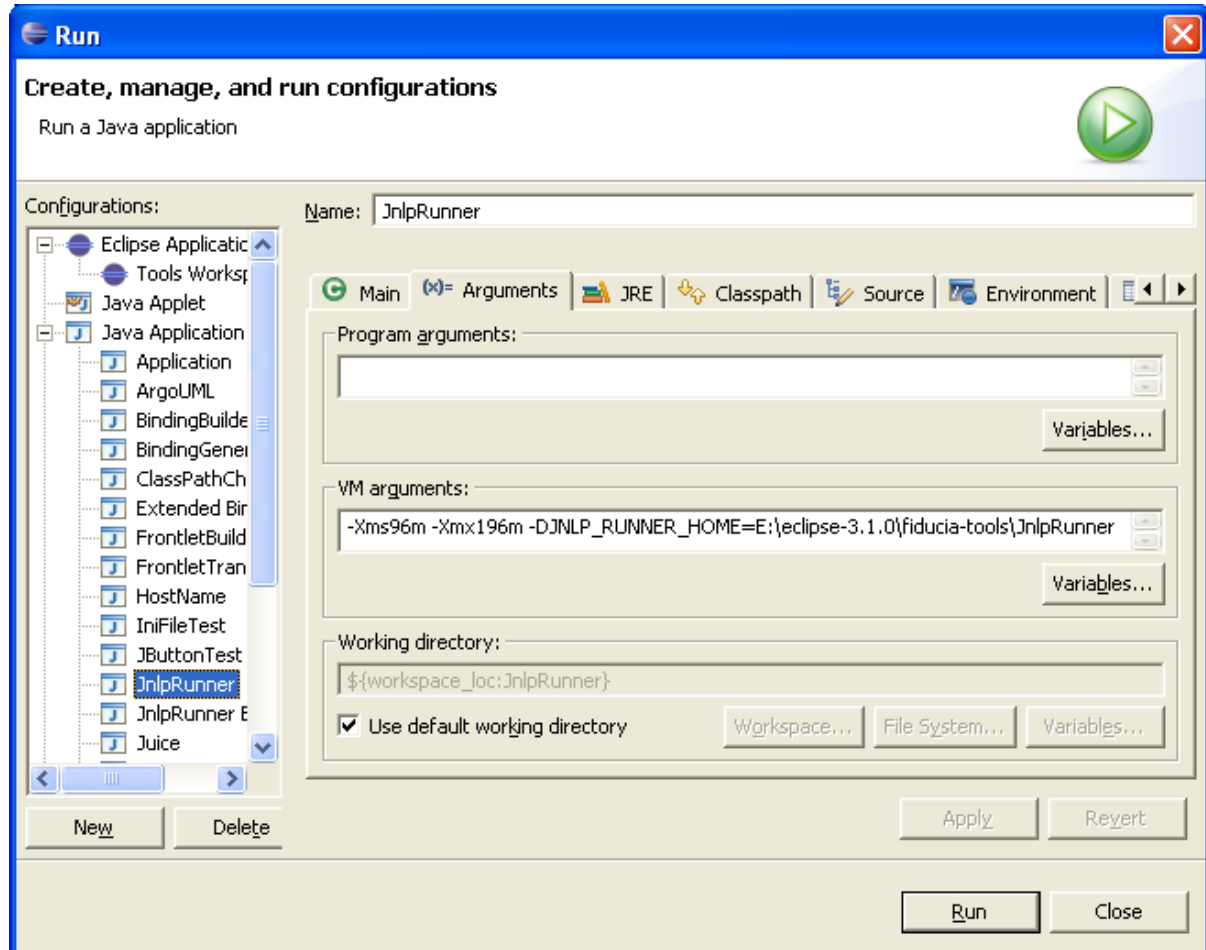


Abbildung 2. memory settings

4.3. Start using Windows Explorer or the Mac application

The archive xbf-bootstrap__V1.0.4.jar is startable. Either start it on the command line with the command `java -jar xbf-bootstrap__v1.0.4.jar` or use Windows Explorer by opening the contextual menu for the jar file and selecting javaw. On a Mac simply double click the application icon, the console output on Mac OS X can be browsed with the console application.

Starting on Windows™ using the Explorer prevents the java console from being shown, this might make it more difficult to trace Errors or Exceptions.



Anmerkung

There is also no possibility to supply VM-Arguments to the tool, which means that the VM will be started with the default parameters of the platform it is running on, and because there is no console, OutOfMemory conditions might not be detected.

On a Mac the command line arguments can be supplied by adapting the info.plist file contained in

the application bundle. Just double click the file and edit the entry VMOptions.

4.4. Commandline parameters

The only supported commandline parameter is the path and name of the configuration file. All the other settings are read from this config file when JnlpRunner ist started.

5. Using JnlpRunner

After launching JnlpRunner a configuration dialog, in which most of the important settings can be entered is displayed. All settings will be stored in the user's home directrory in a file called .jnlprunner. JnlpRunner then reads the settings from this file upon startup.

5.1. General settings

The settings on the first tab control the download behaviour and the start options for the application.

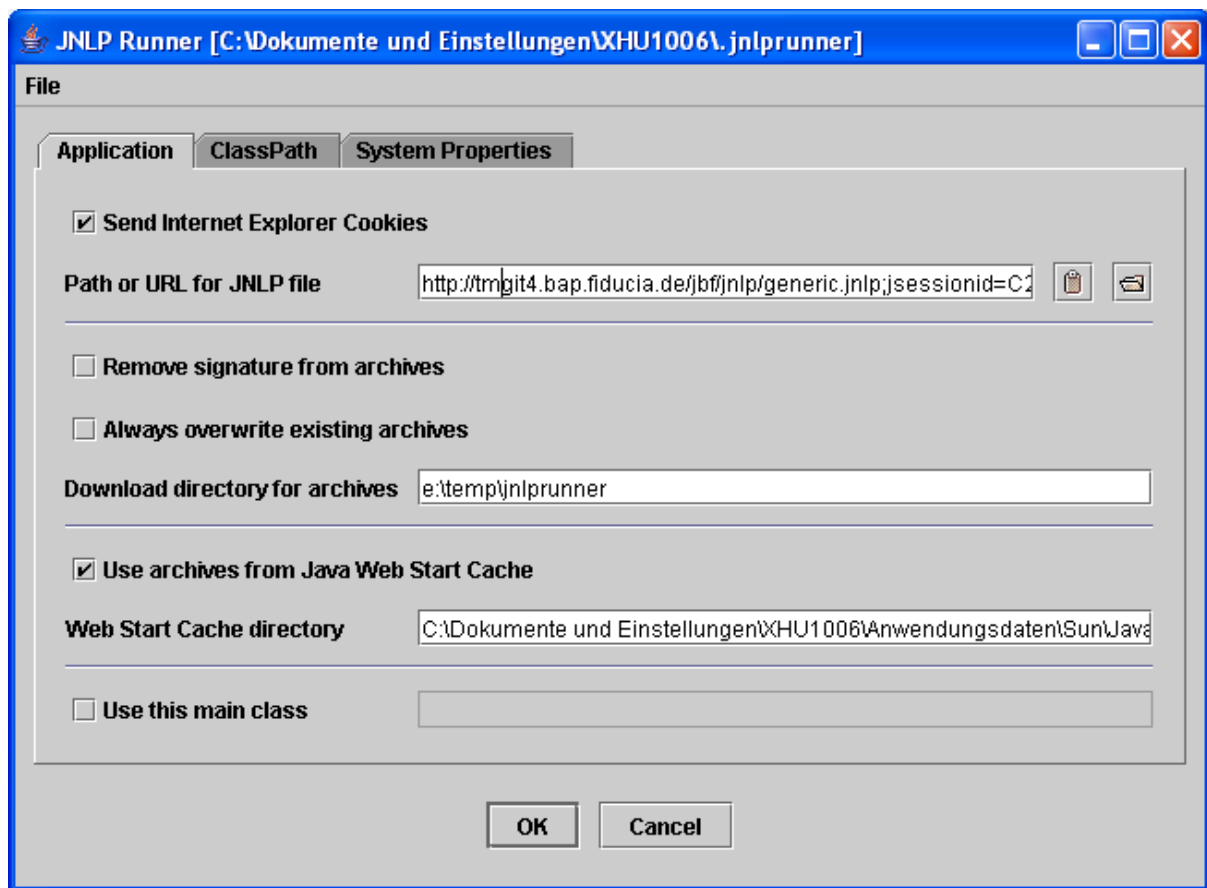



Abbildung 3. general settings

Send Internet Explorer Cookies In case an application (to be precise the jnlp-file) has been loaded from a server, for which an active session must be established, then it might be necessary that the jnlpRunner has to send cookies which are stored in the Internet Explorer's cookie cache. Ticking this checkbox enables exactly this behaviour. JBF-applications always need this feature.

This functionality is only supported with IE and only if the session has been established using IE.

Path or URL to JNLP file

Here either a file system path or a valid URL has to be entered. JnlpRunner expects that the jnlp-file can be loaded from that location.

Use the browse button  to select jnlp-files located in the local file system.

JnlpRunner only accepts absolute path names in URL-notation, with protocol "file" and path separator "/".

Windows example: `file:///E:/temp/generic.jnlp` or Unix example: `file:/tmp/generic.jnlp`

Use the paste button  to paste a URL from the clipboard into the entry field.

Remove signatures from archives

Usually this checkbox should not be ticked unless the performance of the application during testing should be improved. Never use unsigned jar-archives for deployment.

Always overwrite existing archives

Ticking this checkbox instructs JnlpRunner to completely download the application everytime JnlpRunner ist started. Previously installed files will always be overwritten

Use this option to download the latest version or patches of the application archives from the server, or when download servers have been changed.



Anmerkung

When the additional option "Use archives from Java Web Start Cache" (see below) has been activated, then the archives contained in the cache are not overwritten, even if the above option is activated. In case the archives on the server have been updated, but their version number did not change then you should either not use the Java Web Start Cache or delete the archives manually.

Download directory for archives

JnlpRunner will store all downloaded files in this directory. Inside the directory JnlpRunner creates a structure representing the download URLs of the archives.

Archives from the original Java Web Start cache will not be copied here.

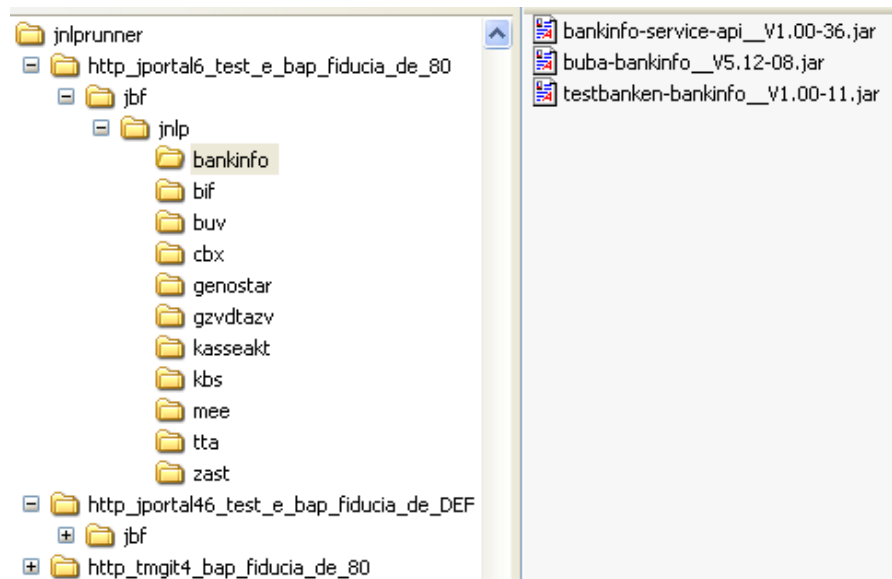


Abbildung 4. Directory structure inside the given download directory

Use archives from Java Web Start Cache. When this option is activated, then JnlpRunner will use already existing archives from the Java Web Start cache instead of downloading them from the server.

Web Start Cache directory When using the above option, then here the correct Java Web Start cache directory must be configured.

Use this main class This option overrides the main class given in the jnlp-file and replaces it with the class named in the entry field beside the checkbox.

Now the application can be started by clicking the OK-Button. Clicking the CANCEL-Button will exit JnlpRunner.



Anmerkung

Settings will be saved only when the OK-Button is clicked.

5.2. Classpath-Extensions

The list of directories and archives in this list will be prefixed to the classpath and are therefore scanned for classes and resources before the archives which have been downloaded. This feature is usefull for trying out patches and fixes.

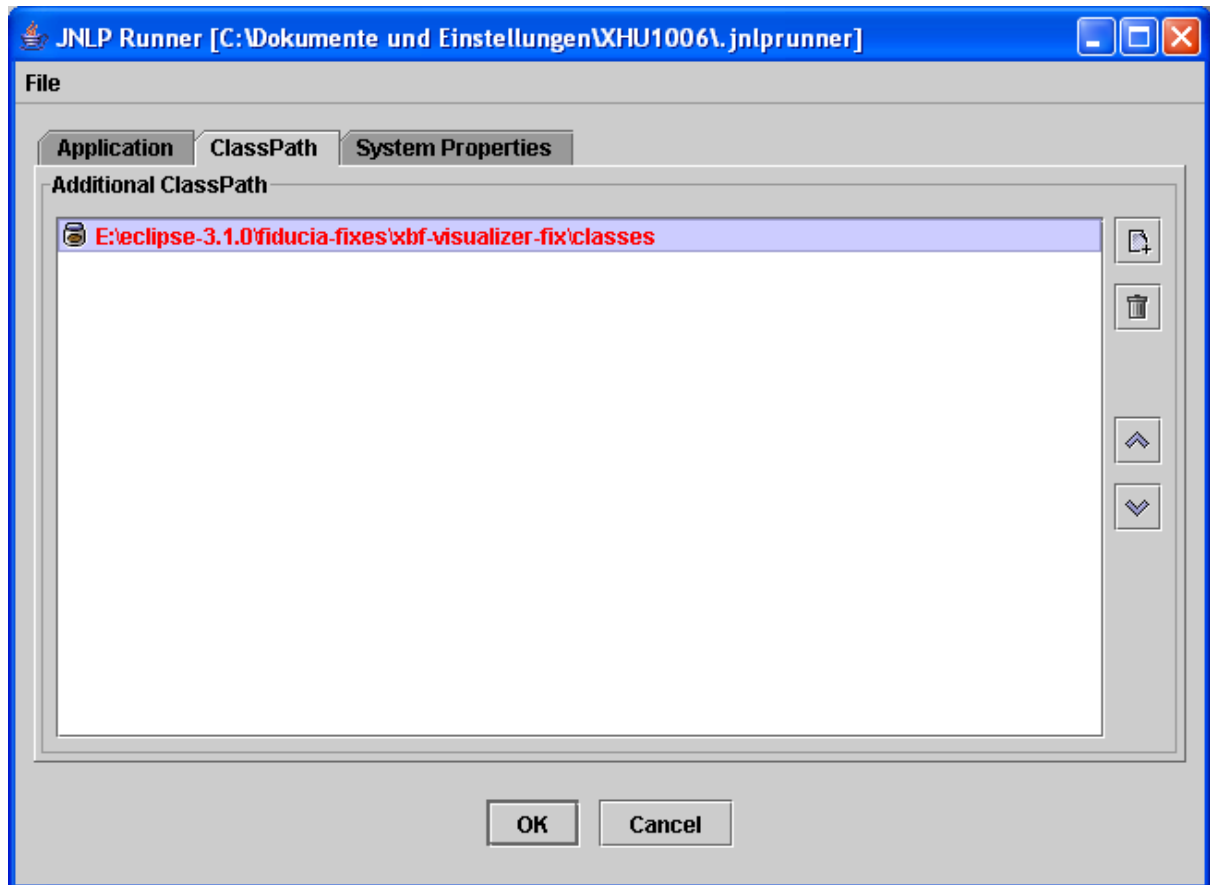


Abbildung 5. Classpath-Settings

With the buttons to the right new entries to the list can be created and existing ones can be deleted. The sequence of the entries can be changed using the arrow buttons.

5.3. System Properties

The system properties defined here overwrite any properties contained either in the jnlp-file or are passed to the JVM during startup.

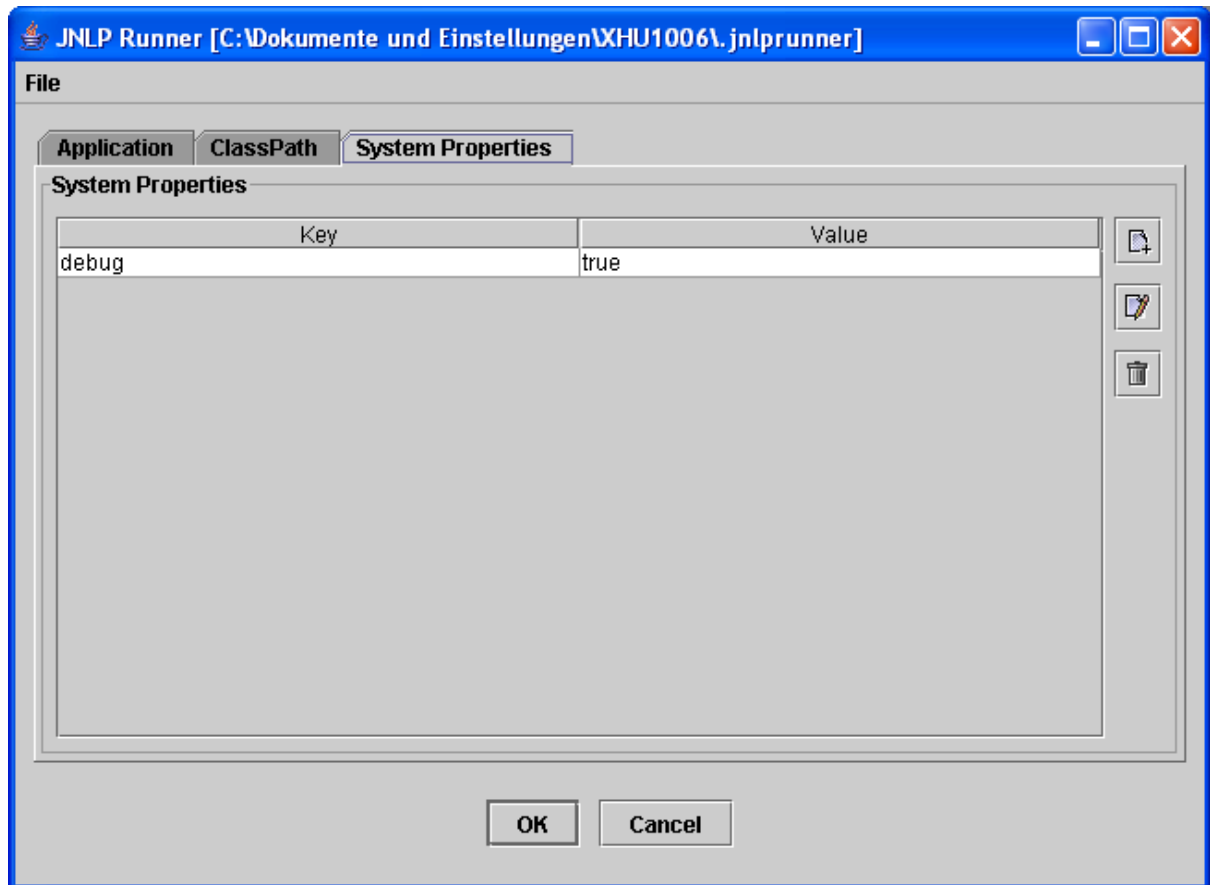


Abbildung 6. System Properties

The buttons to the right allow properties to be entered, edited or deleted.

5.4. Saving settings

The currently used settings may be saved using the File menu. The name of the current settings file is displayed in the title bar of the JnlpRunner window.

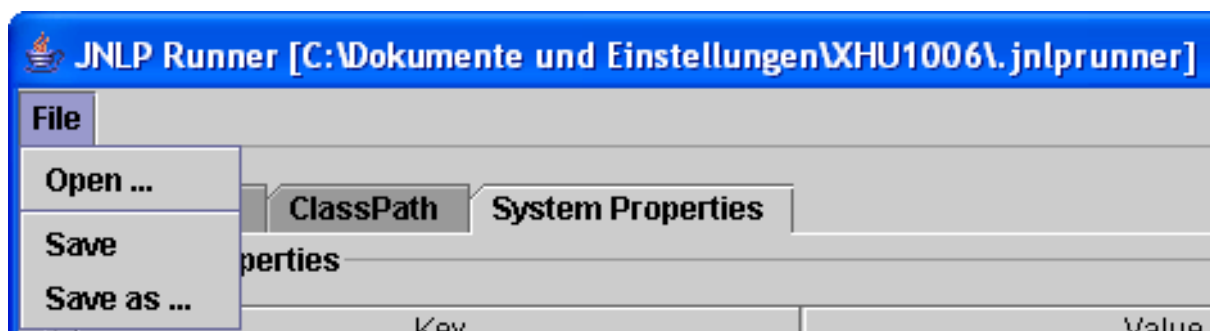


Abbildung 7. Menu

Open	Allows to select a previously saved set of settings.
Save	All settings will be saved in the currently used file.

Save as ...

The current settings will be saved to a new file.

6. Changes

6.1. Version 1.00-04

Here the changes compared to the previous version are documented.

- Externalized Strings
- English translation of JnlpRunner and manual.

6.2. Version 1.00-03

Here the changes compared to the previous version are documented.

- Now the directory structure for the downloads directory is similar to the structure Java Web Start creates in its cache. The structure now contains the url and the version number of downloaded archives.
- Now the config file may be passed on the command line. Settings will be loaded from this file.