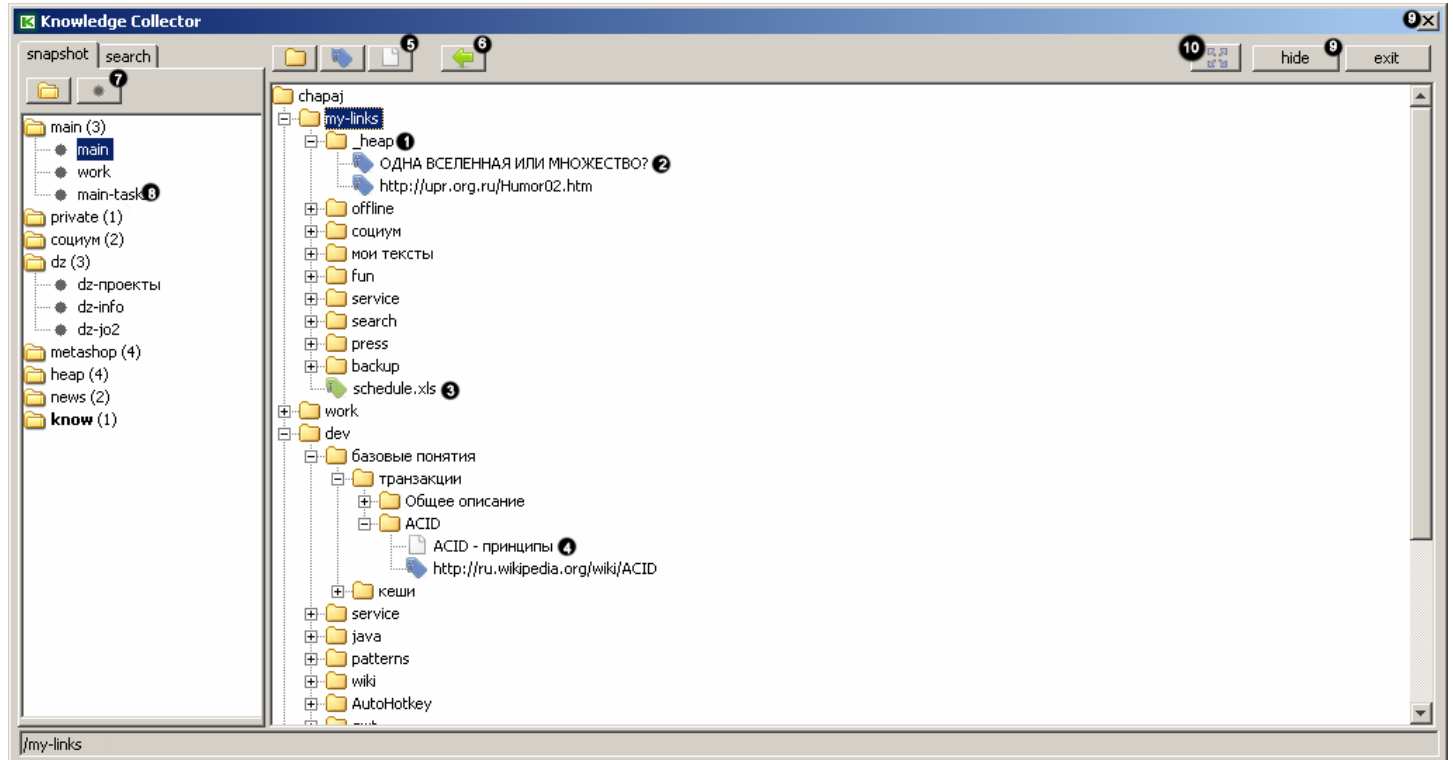


Knowledge Collector. User's Guide

By Evgenij Dolganov (02/27/2010)

1 Short description of the interface

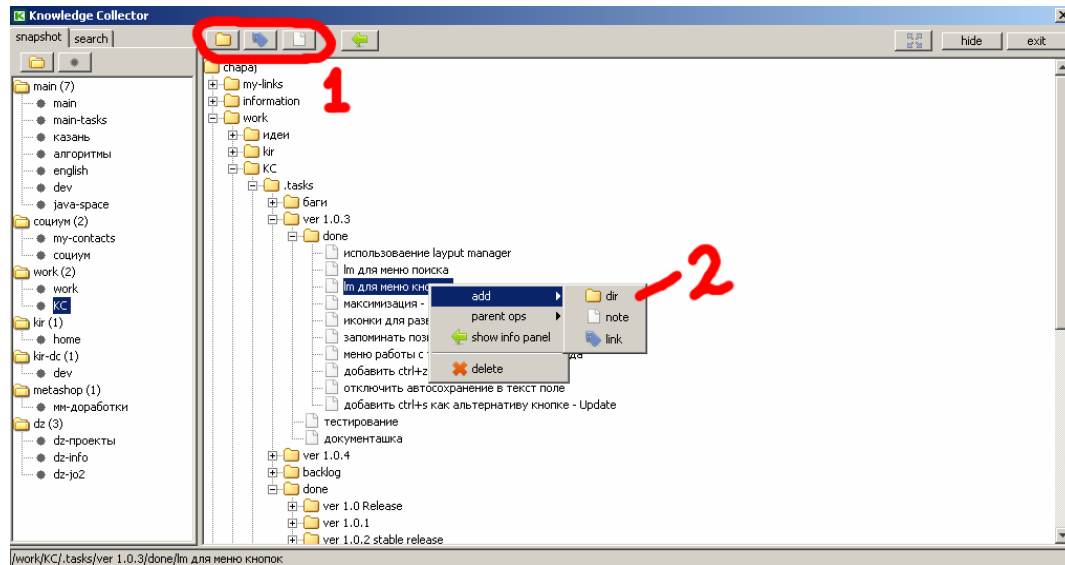


1. Tree structure of files and folders.
2. Link to the Internet resource.
3. Link to a local resource.
4. Scratch pad to write (notes, thoughts).
5. Create the desired object in the tree.
6. Show / hide detailed information about the object tree (description, url, etc.).
7. Save the current state of the tree (the set of uncovered branches).
8. Choose the condition of the tree from the previously saved.
9. Hide program in the system tray.
10. Expand to Fullscreen

2 Scenario of

2.1 Create a new node in the tree

- Select a parent node
- Click on the desired button in the toolbar (1) or in the context menu (2)

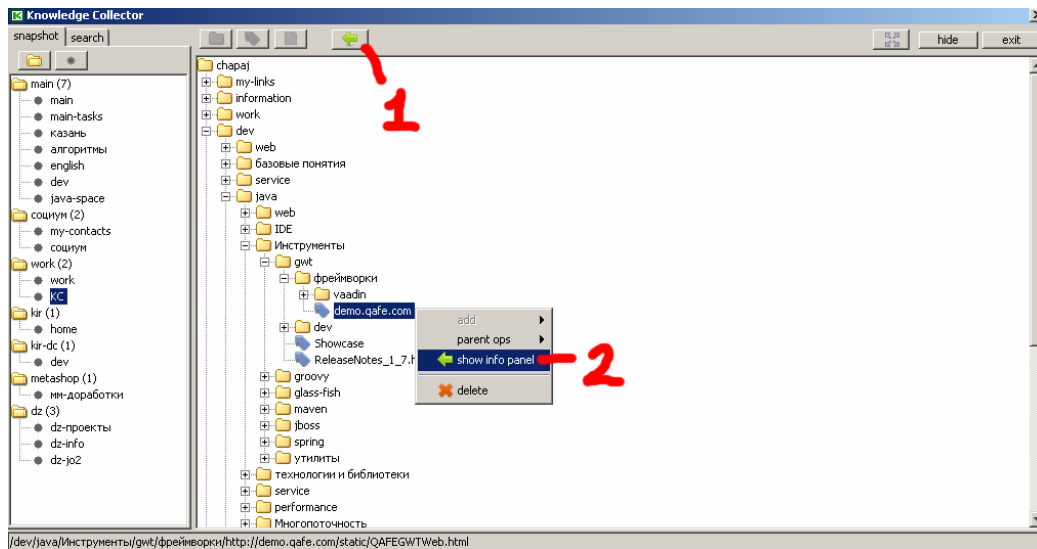


2.2 Deleting a node

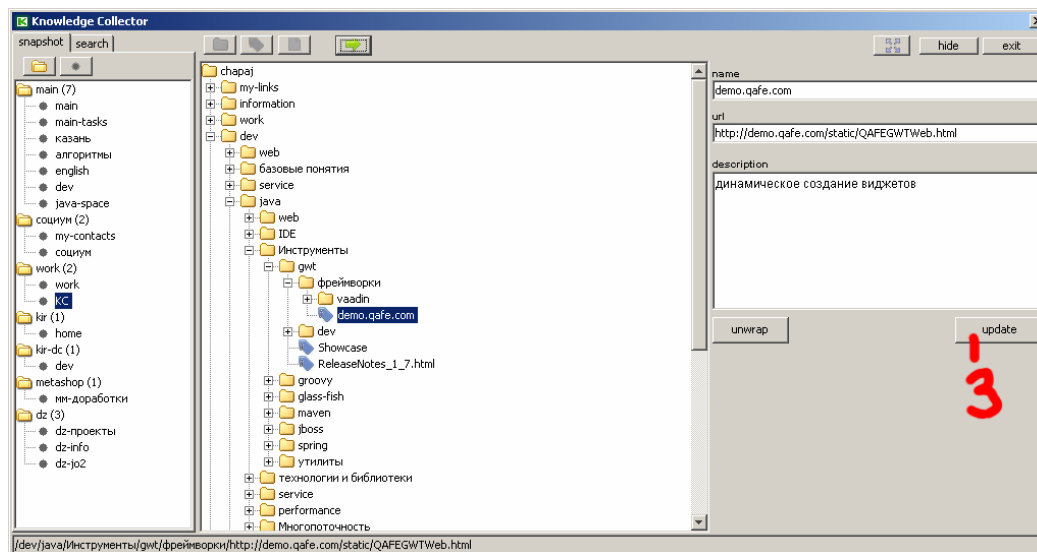
- Select the desired node
- Select the «delete» from the context menu

2.3 A detailed viewing and editing of node

- Select the desired node
- Display detailed information about the node, clicking on the button in the toolbar (1) or in the context menu (2)

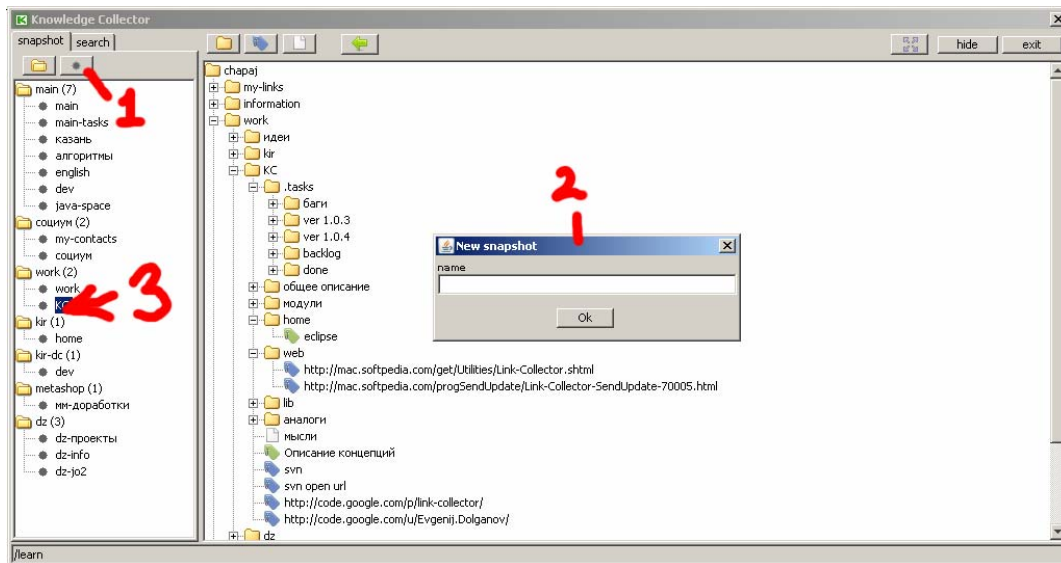


- Edit the detailed information from the node
- To save click on the button «update» (3), or by pressing ctrl + s

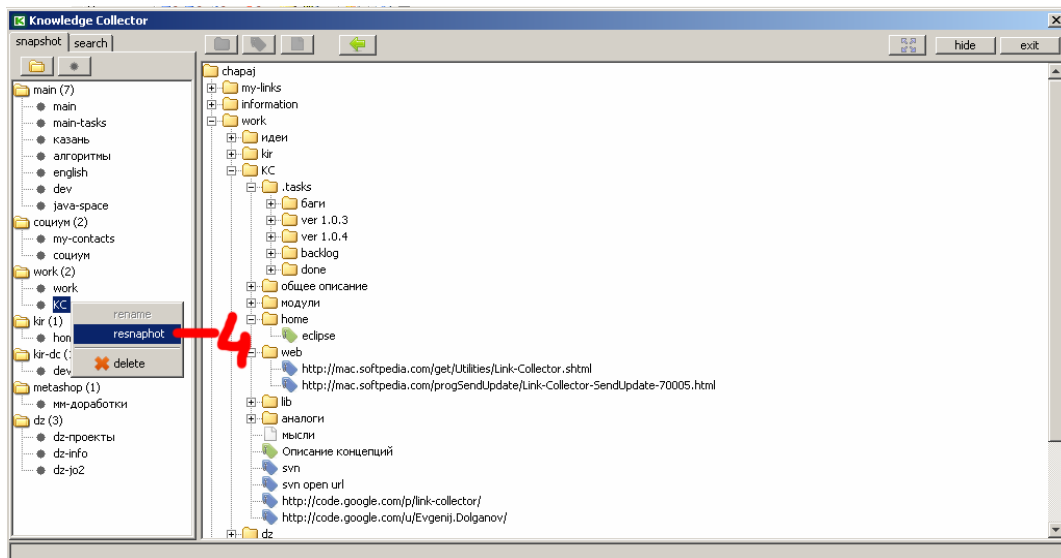


2.4 Save the current state of the tree

- Click on the button in the toolbar (1)
- Enter the name (2)
- Node is created in the list on the left (3)



- To update the node state to select the desired option from the context menu (4)



2.5 Search Nodes

- Select a search bar (1)
- Enter the search bar and press Enter (2)
- Search is carried out on all the properties of node (3)

