

Magic SurFer



ADVANCED

RELEASED February 2012

Developer

Ferdinand V Cenon

www.ferdinandcenon.com

ferdinand.cenon@hitechfusion.com

Copyright and Trademark by

www.ferdinandcenon.com

ferdinand.cenon@hitechfusion.com

READ ME DOCUMENTATION

System Requirements:

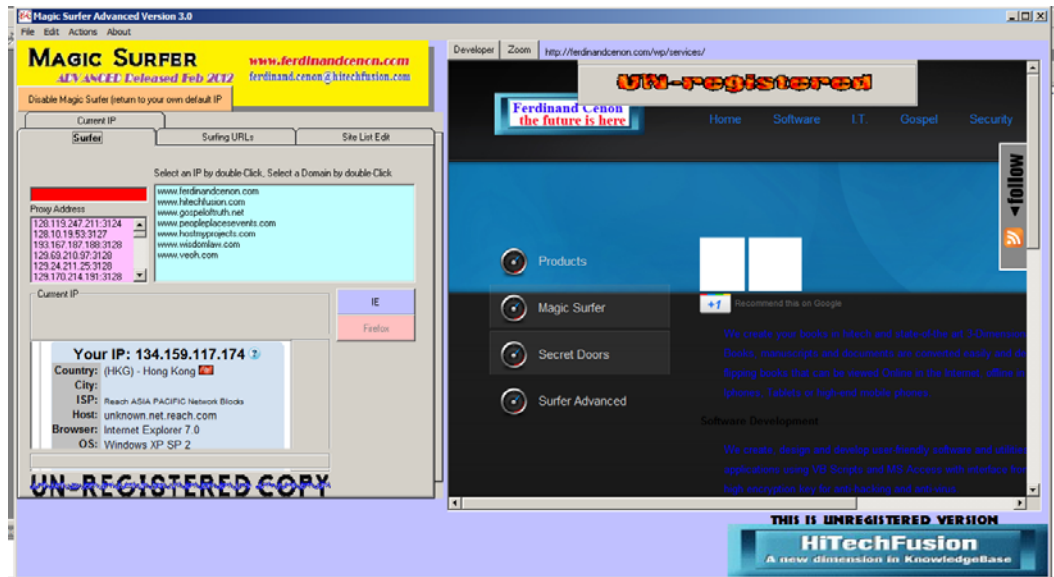
Win XP / Win Vista / Windows 7

Minimum 10MB hard disk space and memory

Internet connection

Downloadable Installer and Update

Main Screen



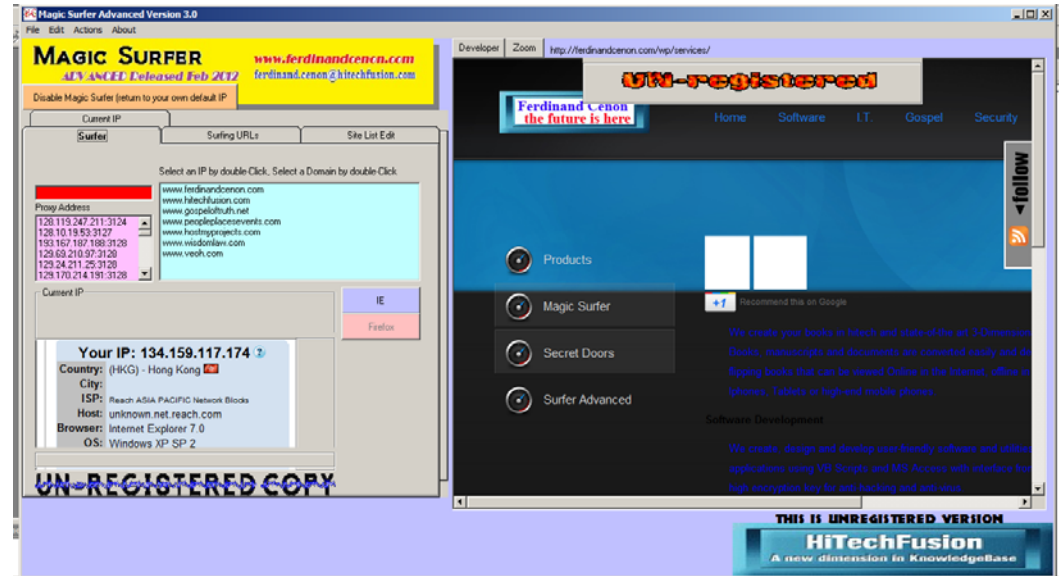
Left Panel:

1. Menu
2. Folder Tab Navigation
 - a. Surfer
 - b. Surfing URLs
 - c. Site List Edit
 - d. Current IP

Right Panel:

1. Internal Browser
2. Developer
3. Zoom

SURFER TAB:



Left Panel:

1. Menu

Found in the upper left corner of the screen

Alternative way to use the FOLDER TAB

2. Folder Tab Navigation

a. Surfer

Shows the List of Proxy Addresses

Shows the List of Websites

Shows Current IP Address

2 Buttons for External Navigation using IE and Firefox

How to use:

Select a Proxy Address and Double Click

Select a website and double click

What happens:

The right panel shows the selected website. You need to be ONLINE to achieve this and the current IP gets displayed in the lower left of the left panel.

b. Surfing URLs

c. Site List Edit

d. Current IP

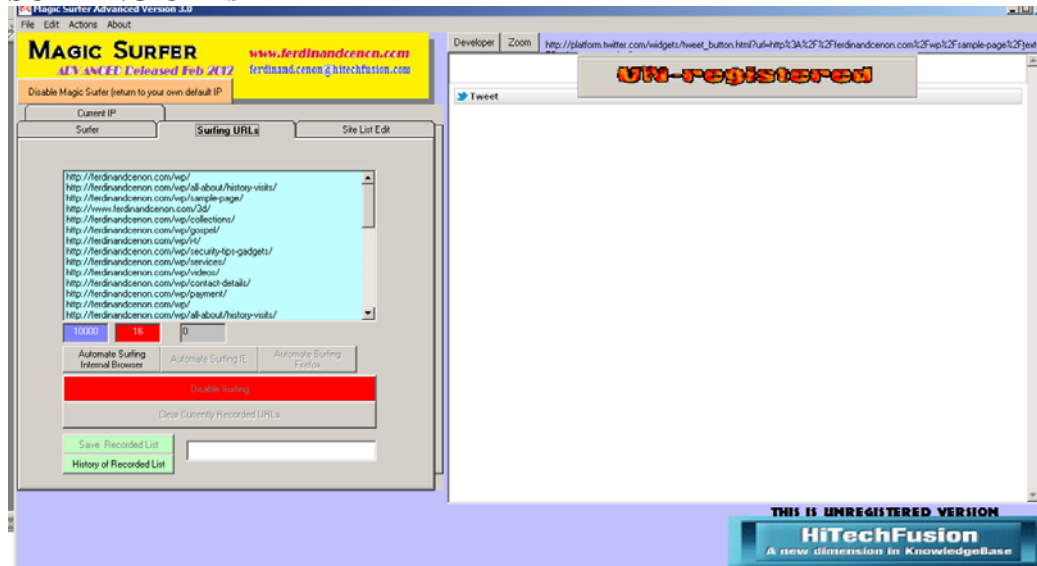
Right Panel:

3. Internal Browser

4. Developer

5. Zoom

SURFING URLS



By default, from SURFER TAB, when you click a website, it uses and shows the page on the right panel. From SURFING URLS, it has 3 ways to browse a website: 1) the Internal Browser that is based on your default browser; 2) Internet Explorer; 3) and Firefox.

Command Buttons:

1. Automate Surfing Internal Browser

Click on the History of Recorded List

Select an item from a default history of recorded list. This list can be modified later.

What happens, after selecting an item, the LISTING gets updated on screen and shows a list of web pages that are contained inside the recorded item.

Once the LIST on top is refreshed with a new list of web pages, you can then click the command AUTOMATE SURFING INTERNAL BROWSER

What happens, the right panel shows the web pages in sequence in defined period of time event.

You can only stop the browsing of web pages by clicking the DISABLING SURFING or closing the system program.

The webpages that you browse uses the proxy or current IP address.

2. Automate Surfing IE

This is similar to the first command button, except it browses all the webpages in sequence using your default **Internet Explorer** browser in multiplied instances. Close each browser windows manually and closing the program stops the browser or click the DISABLING SURFING button.

3. Automate Surfing Firefox

Very similar to the above command button, except it uses your default **FIREFOX** browser.

4. Disabling Surfing

Use this to stop any browser by the Internal Browser, by IE or Firefox without closing the system program.

5. Clear Currently Recorded URLs

What happens when this command button is clicked, it clears all the contents of the LIST of webpages

6. Save Recorded List

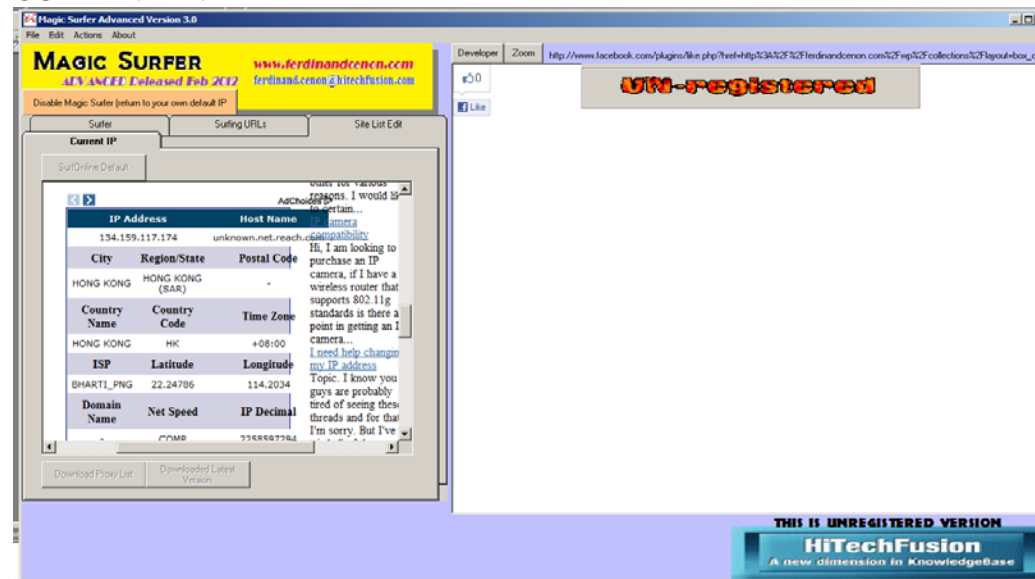
By default, when you run the software, you will either have one or two URLs displayed on the LIST. Select an item URL, right click and it will automatically delete the URL itself. Double click on a URL and it gets displayed in the right panel's Internal Browser.

As you look into your selected webpage, you can go ahead and click LINKS from the Internal Browser. You will notice that each click gets recorded in the LIST. If you are satisfied with the LIST, you can click the button, AUTOMATE SURFING INTERNAL BROWSER or SAVE the List in a file by clicking this button, SAVE RECORDED LIST. You need to input a filename in order for you to do this.

7. History of Recorded List

This button shows the list of item files saved which each contains a list of recorded web pages. If you have saved your list, the name appears in the recorded list.

CURRENT IP:



This CURRENT IP TAB shows current IP address in use. This may vary from the IP address shown in the SURFER TAB, being external.

Command Buttons:

SURF ONLINE DEFAULT

This retrieves a specific webpage from the host of this software. If your website(s) has been subscribed, your default browser is launched and displays all subscribed websites in sequence. It can only be stopped when you close the whole program. An updated version will have an option to stop the browsing automatically.

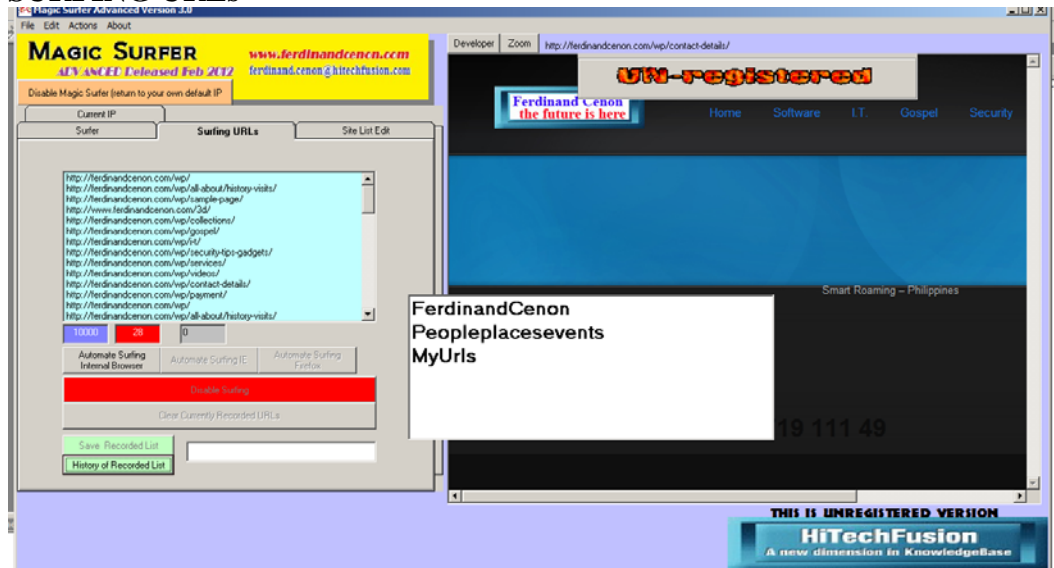
DOWNLOAD PROXY LIST

Download the latest proxy list. Subscribers will have a shared list of proxy addresses. Downloading this can be used to update your list of proxy addresses from the SURFER TAB option.

DOWNLOAD LATEST VERSION

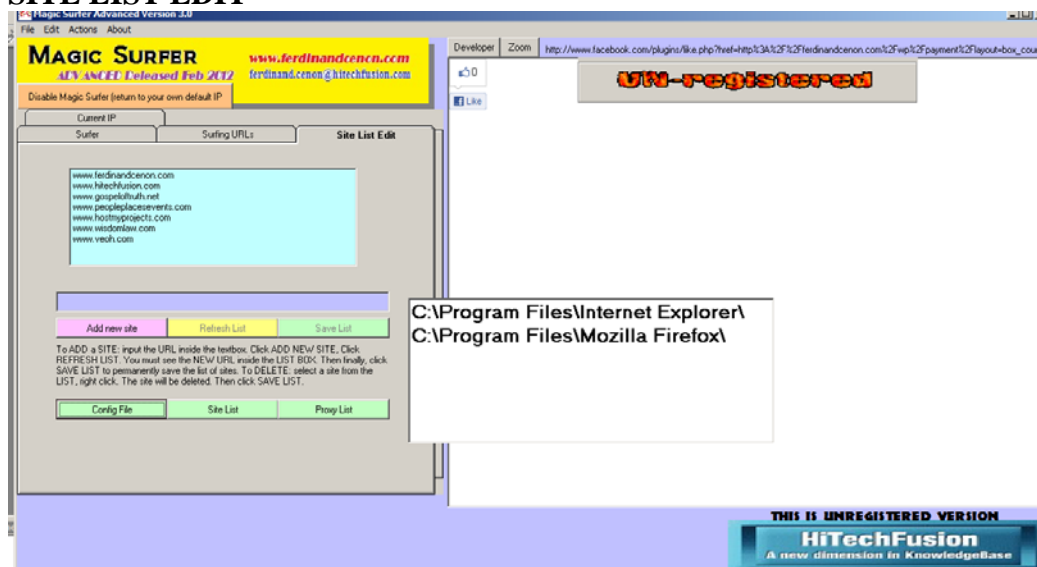
Download the latest version of this software in Shareware. For subscribers and licensed version, an email will be sent to registered address.

SURFING URLs



Clicking the HISTORY OF RECORDED LIST displays a list. Select an item file and double click, your list of webpages become refreshed.

SITE LIST EDIT



Command Buttons:

Add New Site

Input a name of new website or webpage, must begin with **www**.

Refresh List

Refreshes the LIST

Save List

SAVES the newly inputted URL and refreshes the list.

Config File

Shows the default configuration file. The first item is the exact location of your Internet Explorer (IE) and the second item is your file's path location for your FIREFOX (if any).

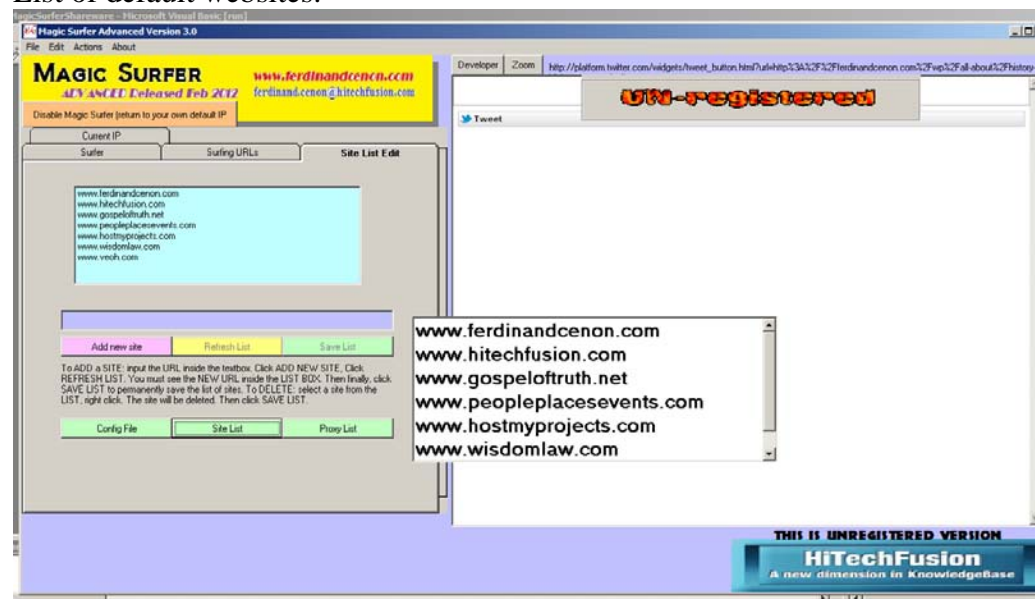
Site List

This shows the list of websites you have by default and shown in the SURFER TAB. This can be modified to contain your own list.

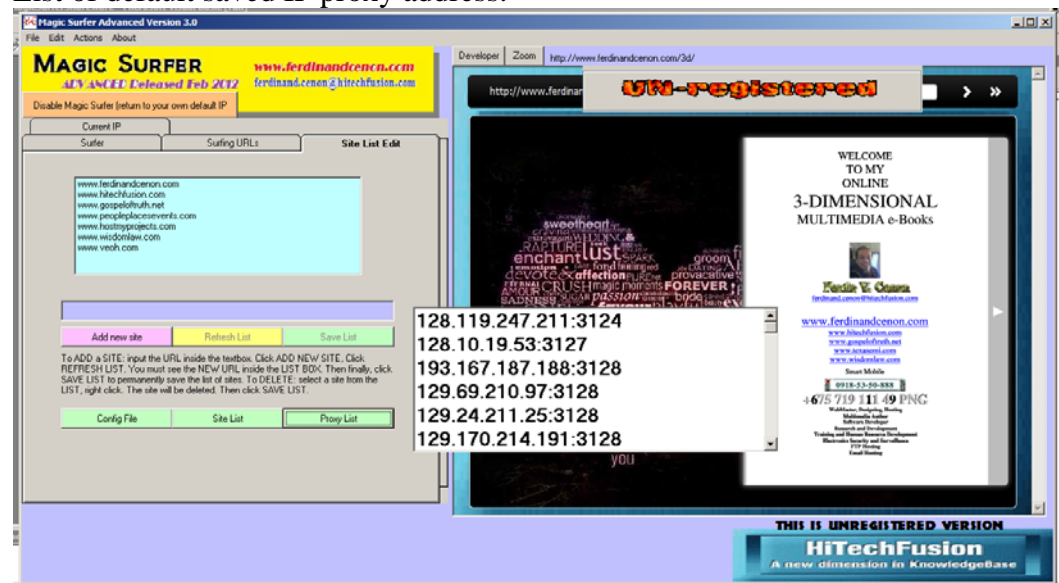
Proxy List

This shows the default or saved proxy addresses used in all your browsing depending upon the selected IP.

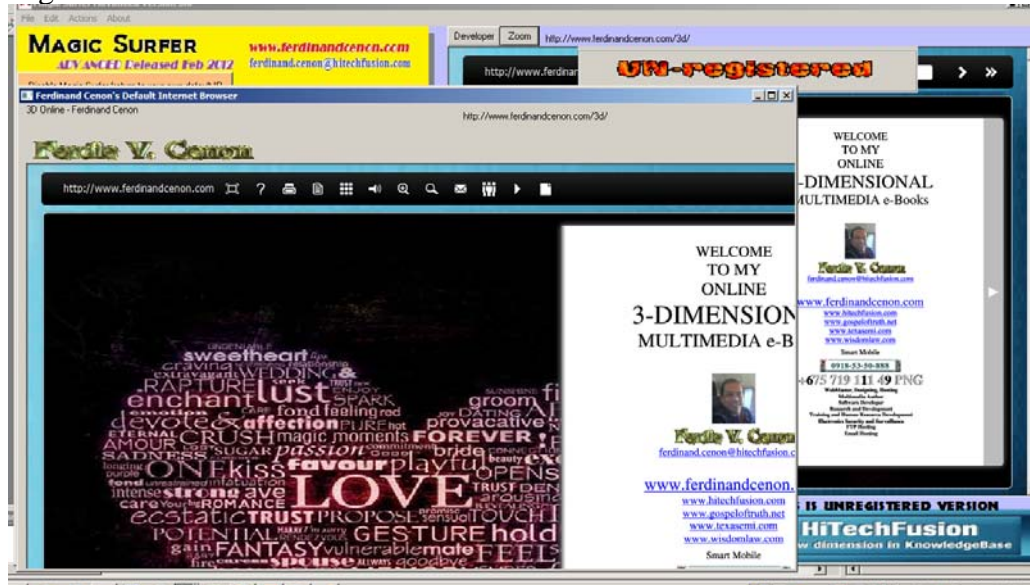
List of default websites:



List of default saved IP proxy address:



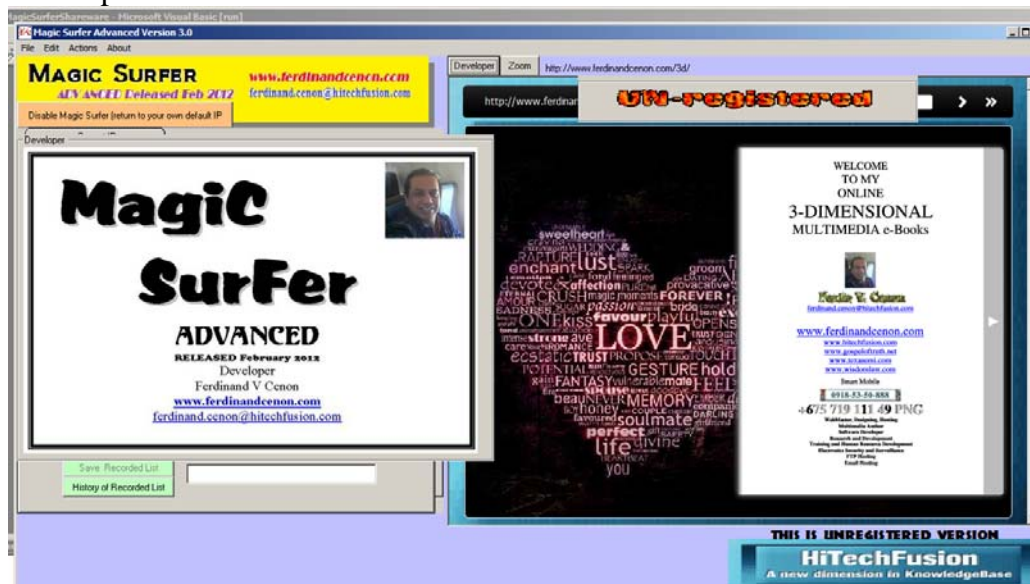
Right Panel: ZOOM



From the right panel:

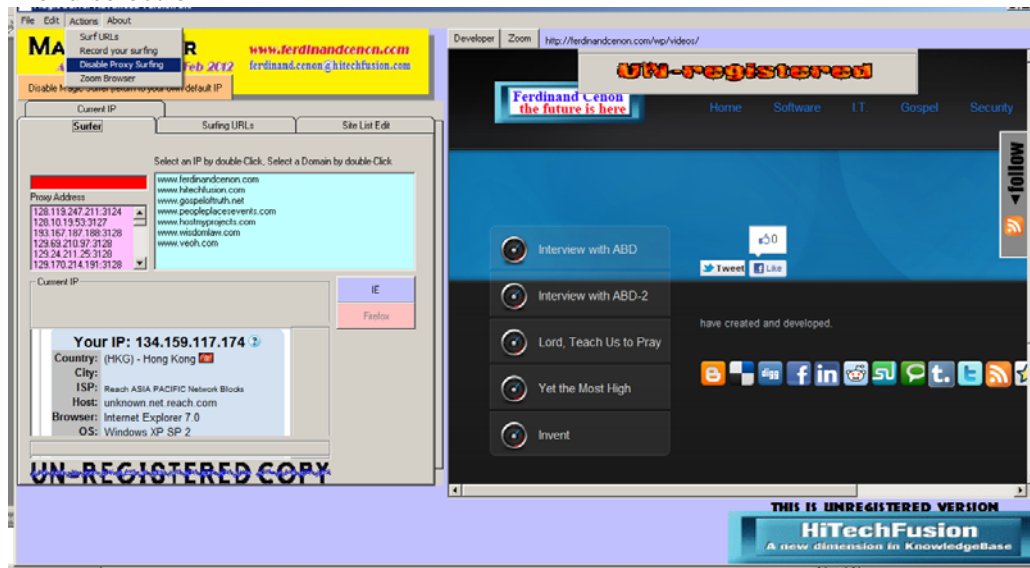
When you click the ZOOM button, it simply maximizes internal browsing for ease of navigation.

Developer



Right panel, DEVELOPER button, shows the contact details of the Developer.

Menu selection



The menu items are found in the upper left corner of the screen.

A REGISTERED and LICENSED version will remove the UN-REGISTERED marks and enables other features.

End of documentation. February 12, 2012