

MassDeployer 3.0 Evaluation Guide

Introduction:

MassDeployer deploys the Admin Commands (Software or Scripts) to the clients in your organization in minutes. MassDeployer uses the existing Active Directory Infrastructure in your network in a best way to provide you the Software/Script deployment feature. Unlike Software Deployment products that only give the software deployment feature, MassDeployer provides both Software and Script Deployment in a cleaner way.

Preparing a Computer for Evaluation:

You need only one computer for the evaluation of MassDeployer (Windows 2000 or Windows XP or Windows Vista or Windows Server 2003 or Windows Server 2008). The computer should be within a Domain and you need to be a Domain Admin. If you are not a Domain Admin you can only see the options in the Admin User Interface, you cannot deploy commands Package.

MassDeployer Components:

MassDeployer consists of two components.

1. MassDeployer Admin – Admin User Interface used to Add, Edit or Remove the commands (Script or Software) for the clients.
2. MassDeployer Client – The client component which executes the commands given by the Admin.

Prerequisites:

1. .Net Framework 2.0 or higher

Installing MassDeployer Admin:

You can install MassDeployer Admin in the Evaluation Computer by following the instructions below,

1. Start the MassDeployer Admin.MSI on the Evaluation Computer and click next.
2. Read the license agreement carefully and then click “I Agree” if you accept all the license terms and conditions.
3. Click Next to Install MassDeployer Admin.
4. Click Finish.

Installing MassDeployer Client:

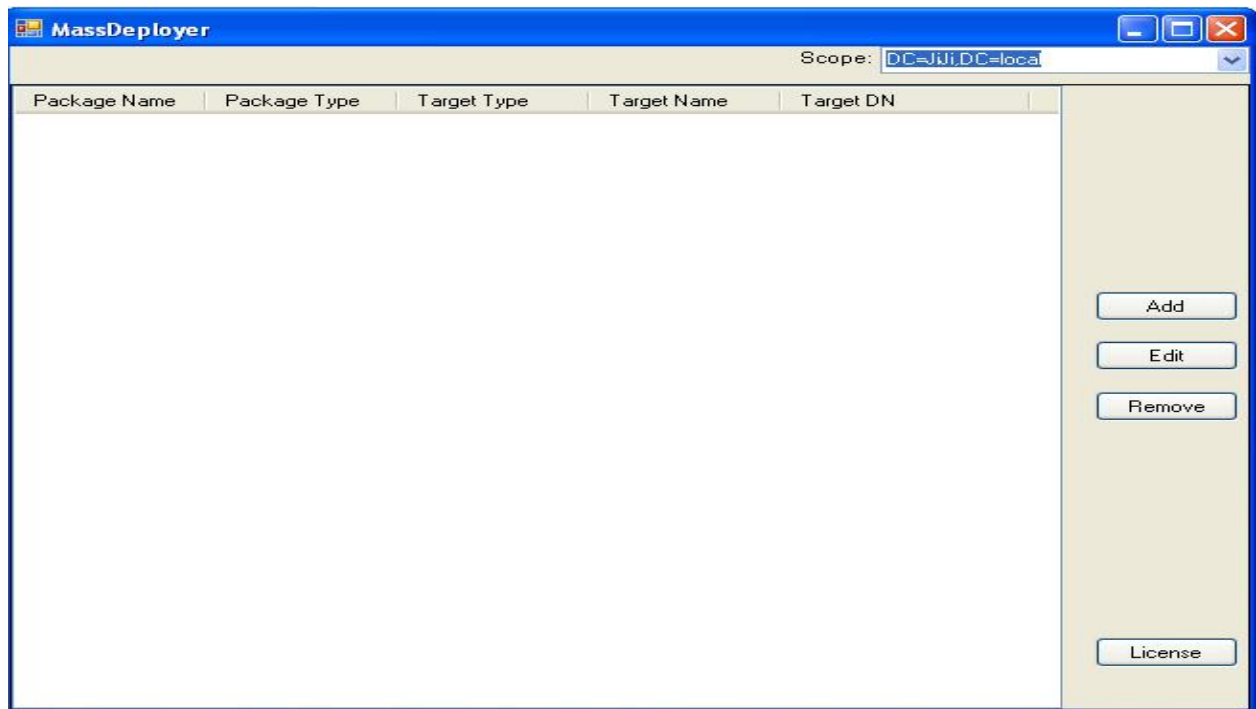
1. Start the MassDeployer Client.MSI on the Evaluation Computer and click next.
2. Read the license agreement carefully and then click “I Agree” if you accept all the license terms and conditions.
3. Click Next to Install MassDeployer Client.

4. Click Finish.

Create a new Package:

Now you are ready to add commands Package for the client. To create a new Package follows the steps.

1. Click Start > All Programs > MassDeployer.



2. Click

Package

Package Name:

Deploy Commands | Cleanup Commands | **Target** | Schedule

Command:

Arguments:

☐ Success Code:

☐ Quit On Failure

☒ Run in Background ☐ Run Interactively

Copy File/Folder

☒ None ☐ Copy File ☐ Copy Folder

From:

To:

Commands

Command	Arguments

3. Give the Package Name and Click Browse button.
4. Select the file which is available in the network share. The file may be an Installer Package (MSI, MSP, EXE or MSU) or a Script File (VBS, BAT, CMD etc).
5. If the selected file needs User Interaction, you have to select the option “Run Interactively”. Otherwise it will get blocked in the background.
6. Select the Target Tab.

Package

Package Name:

Deploy Commands Cleanup Commands **Target** Schedule

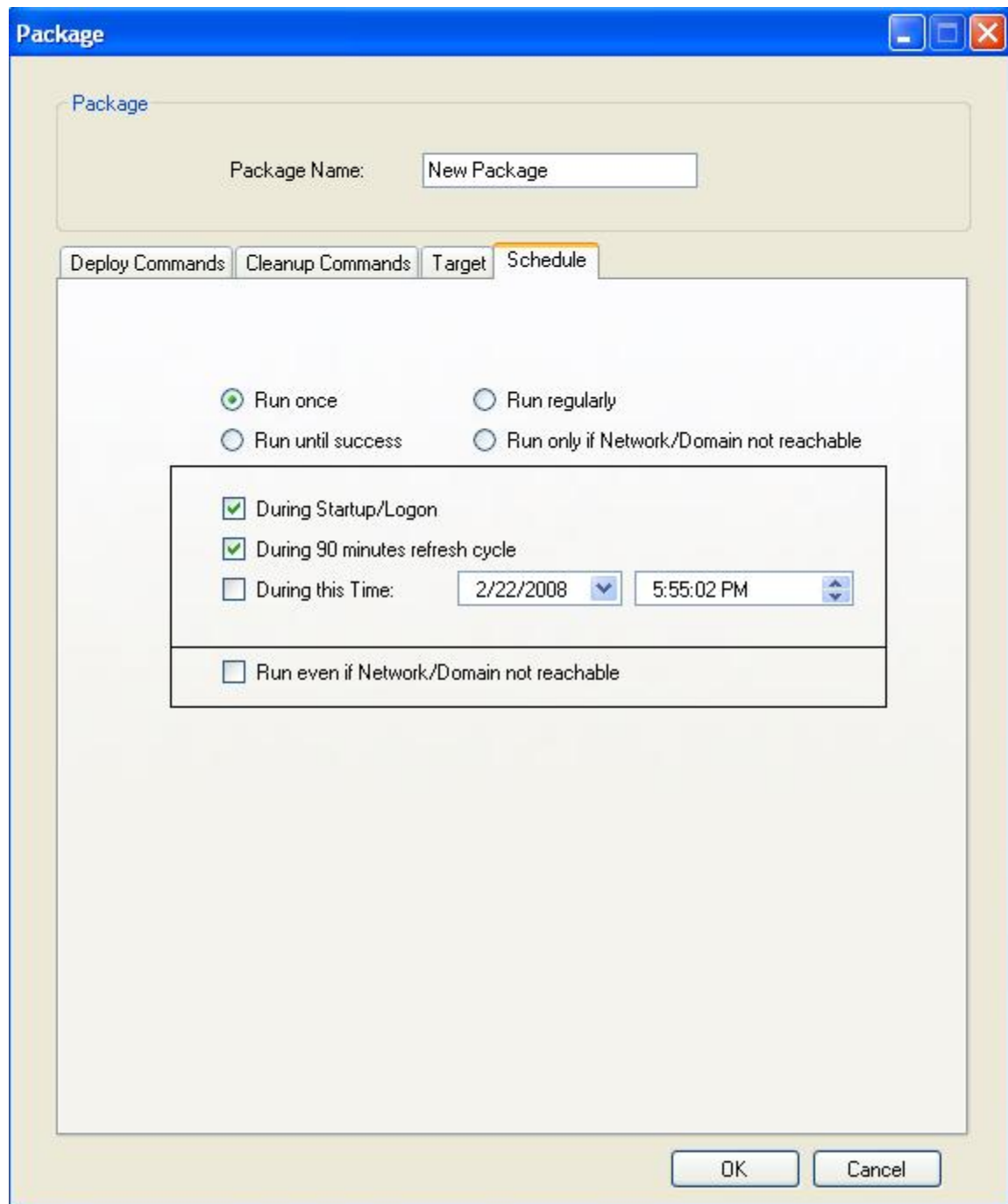
Target Type: ☒ Domain ☐ OU ☐ Group ☐ Computer ☐ User

Target Name:

Package Type: ☒ Computer ☐ User

OK Cancel

7. Select the Computer Target Type and Select your Computer distinguished name.
8. Select the Schedule Tab.



9. Click the option "Run Once" and Select "During Startup/Logon"
10. Click OK.
11. Logoff and Logon your computer. The deployed command will get executed. You can check that in your Event Viewer.

Conclusion:

You have successfully installed, configured and tested MassDeployer. This evaluation guide introduced you to MassDeployer. MassDeployer can do more.