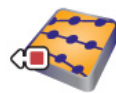


**LizardTech™**



**MG4** *Decode*

**User Manual**

## Copyrights

Copyright © 2009–2010 LizardTech Inc. All rights reserved. Information in this document is subject to change without notice. The software described in this document is furnished under a license agreement or nondisclosure agreement. The software may be used or copied only in accordance with the terms of those agreements. No part of this publication may be reproduced, stored in a retrieval system, or transmitted in any form or any means electronic or mechanical, including photocopying and recording for any purpose other than the purchaser's personal use without the written permission of LizardTech, Inc.

LizardTech acknowledges and thanks the many individuals and organizations whose efforts have made our products possible. A full list of copyright, trademark and credit information is available in the document "Copyrights Trademarks and Credits" installed automatically with your product.

LizardTech  
1008 Western Avenue, Suite 200  
Seattle, Washington, U.S.A. 98104  
206.652.5211  
[www.lizardtech.com](http://www.lizardtech.com)

## Table of Contents

---

<b>Introduction.....</b>	<b>1</b>
<b>System Requirements.....</b>	<b>1</b>
<b>Installing MG4 Decode.....</b>	<b>1</b>
<b>Decoding MG4 Files.....</b>	<b>1</b>
<b>About LizardTech.....</b>	<b>2</b>
<b>Other LizardTech Products.....</b>	<b>2</b>



# Introduction

Thank you for using LizardTech™ software and welcome to the MG4 Decode User Manual. MG4 Decode is an easy-to-use decoding tool for decompressing MrSID-encoded LiDAR files out to LAS or text format.

The purpose of this user manual is to introduce you to MG4 Decode and give you quick information about how to use it. To access this documentation as WebHelp click **Start > LizardTech > MG4 Decode > Help** after you have installed it on your computer.

## System Requirements

The following system is recommended for installing and running MG4 Decode:

- One of the following operating systems:
  - Microsoft Windows XP 32-bit, Service Pack 3
  - Microsoft Windows XP 64-bit, Service Pack 2
  - Microsoft Windows Vista 32-bit, Service Pack 1
  - Microsoft Windows Vista 64-bit, Service Pack 1
  - Microsoft Windows 7
  - Microsoft Windows 7
- Microsoft .NET Framework 3.5, Service Pack 1\*
- 1-GHz processor
- 2 gigabytes (GB) RAM (4 GB recommended)

\*If MG4 Decode is being installed as part of a LiDAR Compressor installation, then .NET Framework is included and you are prompted to install it.

## Installing MG4 Decode

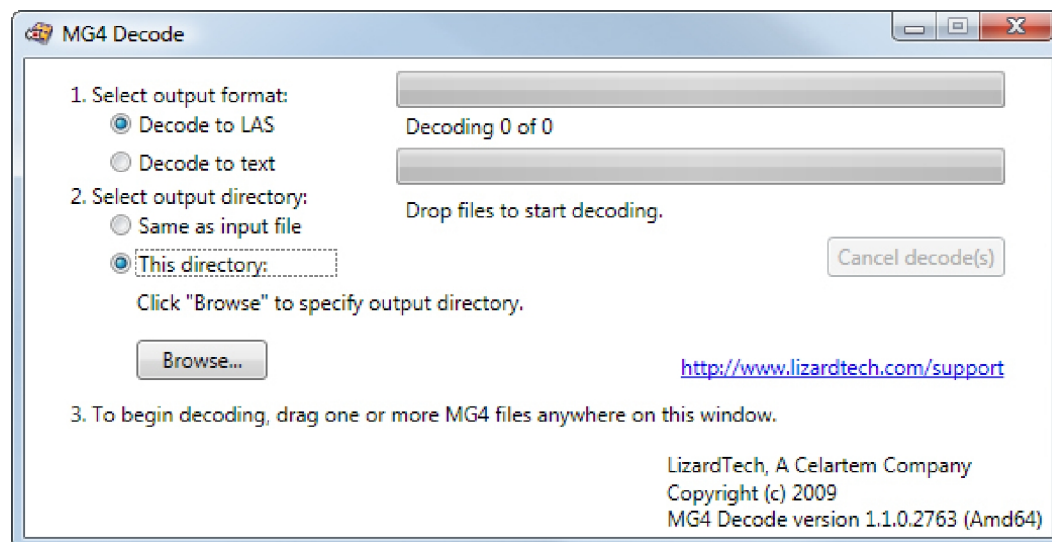
MG4 Decode is available as a free download from the LizardTech website (visit <http://www.lizardtech.com/download/>).

If you have installed LizardTech LiDAR Compressor, then MG4 Decode has automatically been installed on your system as well.

Once installed, MG4 Decode can be accessed from your **Start** menu.

## Decoding MG4 Files

Using MG4 Decode is easy. The user interface looks like this:

**To decode MG4 files:**

1. If you want the output to be in text format instead of LAS format, select the **Decode to text** radio button. If you select this option, MG4 Decode outputs an ASCII file.
2. If you want the output directory to be other than the input directory, select the **This directory** radio button, then click **Browse** and select the desired directory.
3. Drag your MG4 file(s) from your source directory and drop them onto the application. The top progress bar indicates when each file is finished. The lower bar tells which file (by number) of the total number is being decoded.

## About LizardTech

Since 1992, LizardTech has delivered state-of-the-art software products for managing and distributing massive, high-resolution geospatial data such as aerial and satellite imagery and LiDAR data. LizardTech pioneered MrSID<sup>®</sup> (Multiresolution Seamless Image Database) technology, a powerful wavelet-based image encoder, viewer, and file format, and sits on the Technical Committee of the Open Geospatial Consortium (OGC) for the purpose of extending the capabilities of JPEG 2000 to geospatial applications, driving cross-platform interoperability and rapid Internet distribution for geospatial imagery. LizardTech has offices in Seattle, London and Tokyo and is a division of Celartem Technology Inc., (Hercules: 4330). For more information about LizardTech, visit [www.lizardtech.com](http://www.lizardtech.com).

## Other LizardTech Products

Thank you for using LizardTech<sup>™</sup> LiDAR Compressor. We at LizardTech are glad to have you as a customer. While you're "in the shop," explore LizardTech's other products for managing high-quality images and LiDAR data.

## **GeoViewer**

### ***Efficient Viewing and Exporting of MrSID and JPEG 2000 Layers***

GeoViewer is LizardTech's free, standalone application for viewing geospatial imagery, vector overlays and LiDAR data. GeoViewer enables you to combine, view and export visual layers from varied sources, such as local repositories, Express Server catalogs, and WMS and JPIP servers. GeoViewer supports a wide range of input formats and exports to GeoTIFF, PNG and JPEG. It's the most efficient means of viewing MrSID and JPEG 2000 files.

For more information about GeoViewer visit <http://www.lizardtech.com/download/>.

## **ExpressView Browser Plug-in**

### ***Fast Network Viewing of Large Images and Data Sets***

If you like the features in GeoViewer, consider ExpressView Browser Plug-in. ExpressView enables you to view, navigate and print MrSID and JPEG 2000 files in Internet Explorer or Firefox. Like GeoViewer, ExpressView enables you to save a portion of a file in a number of other formats. ExpressView Browser Plug-in is quickly downloaded, easily installed, and free for individual use. It's the most convenient way to view MrSID and JPEG 2000 files over networks!

For more information about ExpressView Browser Plug-in visit <http://www.lizardtech.com/download/>.

## **GeoExpress**

### ***The Industry's Best Image Manipulation and Compression Software***

With powerful tools for reprojecting, color balancing, mosaicking, and more, GeoExpress is the industry's choice for manipulating and compressing geospatial imagery to industry standard formats. You can also configure Express Server and Spatial Express directly from GeoExpress, which makes it the ideal command center for your storage and distribution workflows.

For more information about GeoExpress visit [www.lizardtech.com/solutions/geo/](http://www.lizardtech.com/solutions/geo/).

## **Express Server**

### ***Image Delivery Software for Geospatial Workflows***

LizardTech Express Server is the best solution for distributing imagery in MrSID or JPEG 2000 format. With Express Server, users on any device access imagery faster, even over low-bandwidth connections. Express Server is faster, more stable and easier to use than any other solution for delivering high-resolution raster imagery.

Express Server catalogs and manages the distribution of imagery, enabling you to integrate the world's best raster delivery technology with geospatial data stores anywhere. Express Server streams compressed images for the fastest possible delivery, whether conventionally to broadband devices and desktops or wirelessly to field personnel using low-bandwidth connections.

For more information about Express Server visit [www.lizardtech.com/solutions/exp/](http://www.lizardtech.com/solutions/exp/).

## **Spatial Express**

### ***Database Storage and Retrieval Tools for Massive Geospatial Imagery***

Spatial Express enables you to store, manage, and access massive image datasets efficiently using your Oracle Spatial database. Whether you want to maximize return on your database investment by storing raster image data hundreds of gigabytes in size, or reduce storage space requirements for that imagery by up to 95 percent while retaining image quality, or view the imagery in your geospatial applications, Spatial Express is the key link between your imagery, your database, and your users.

For more information about Spatial Express visit [www.lizardtech.com/solutions/spatial/](http://www.lizardtech.com/solutions/spatial/).