

MOTION
APPS

mMovie v1.7
For the palmOne Treo™ 600

mMovie v1.7

User Manual

Disclaimer

Information in this document is subject to change without notice and does not represent a commitment on the part of MotionApps. The software and the solutions described in this document are furnished under a license agreement. It is against the law to copy or reverse engineer the software or solutions except as specifically allowed in the license agreement. No part of this manual may be reproduced or transmitted in any form or by any means, electronic or mechanical, including photocopying and recording, for any purpose without the written permission of MotionApps.

This software, all manuals as well as all solutions are copyright ©2005 MotionApps. All rights reserved. Printed in the United States of America.

Companies, names, and data used in examples herein are fictitious unless otherwise noted.

MotionApps and mMovie are trademarks of MotionApps.

All other product names are trademarks or registered trademarks of their respective holders, used only to the owner's benefit, without the intent to infringe.

IMPORTANT - Read the full license terms and conditions below before installing. This License provides you with limited rights to use the software, conditioned upon your continued compliance with these terms and conditions. INSTALLATION OF THIS SOFTWARE WILL CONSTITUTE YOUR ACCEPTANCE OF THESE TERMS AND CONDITIONS.

END-USER LICENSE

Under single End-User License, you may use this program only on a single communicator, together with the related computer(s) used by you in conjunction with that communicator.

You may not use the program for any unlawful purpose, including infringement of the copyrights or other proprietary rights of others, or in any illegal manner or for creation or distribution of illegal content. You agree to indemnify MotionApps for any and all claims arising from any violation by you of the terms of this End-User License.

The following warranty and liability disclaimer apply to this product.

THIS PROGRAM IS PROVIDED "AS IS" WITHOUT WARRANTY OF ANY KIND, EITHER EXPRESS OR IMPLIED, INCLUDING BUT NOT LIMITED TO ANY IMPLIED WARRANTY OF MERCHANTABILITY, NON-INFRINGEMENT OR FITNESS FOR A PARTICULAR PURPOSE, ALL OF WHICH MOTIONAPPS SPECIFICALLY DISCLAIMS, TO THE MAXIMUM EXTENT PERMITTED BY LAW. THE ENTIRE RISK AS TO THE RESULTS AND PERFORMANCE OF THE PROGRAM IS ASSUMED BY YOU. SHOULD THE PROGRAM PROVE DEFECTIVE, YOU (AND NOT MOTIONAPPS OR ITS DISTRIBUTORS OR DEALERS) ASSUME THE ENTIRE COST OF ALL NECESSARY SERVICING, REPAIR OR CORRECTION.

NEITHER MOTIONAPPS NOR ANYONE ELSE WHO HAS BEEN INVOLVED IN THE CREATION, PRODUCTION, OR DELIVERY OF THIS PROGRAM SHALL BE LIABLE FOR ANY DIRECT, INDIRECT, CONSEQUENTIAL OR INCIDENTAL DAMAGES, LOST PROFITS, BUSINESS INTERRUPTION OR LOSS OF INFORMATION ARISING OUT OF THE USE, THE RESULTS OF USE, OR INABILITY TO USE SUCH PROGRAM, OR DAMAGE OF LOSS CAUSED BY THE PROGRAM, EVEN IF ADVISED OF THE POSSIBILITY OF SUCH DAMAGES OR CLAIM. SOME STATES DO NOT ALLOW THE EXCLUSION OR LIMITATION OF LIABILITY FOR CONSEQUENTIAL OR INCIDENTAL DAMAGES SO THE ABOVE LIMITATION MAY NOT APPLY TO YOU.

TO THE MAXIMUM EXTENT PERMITTED BY LAW, MOTIONAPPS' ENTIRE LIABILITY AND YOUR EXCLUSIVE REMEDY IN THE EVENT OF A BREACH OF MOTIONAPPS' OBLIGATIONS IS LIMITED TO A REFUND OF ANY LICENSE FEE YOU ACTUALLY PAID TO MOTIONAPPS FOR THIS PROGRAM.

Table of Contents

Table of Contents	3
Introduction.....	4
Welcome.....	4
Palm OS Basics	4
Installation.....	5
The mMovie Package.....	5
Requirements	5
Installing Your Software	5
About the Demo Version	5
Registering.....	5
Using mMovie	6
Overview.....	6
Using mMovie	6
Recording Movie	7
JPEG Export	7
AVI Export	7
mMovie Settings.....	8
Moving File To and From SD Card	8
Frequently Asked Questions.....	9
Revision History	10
mMovie v1.7	10
mMovie v1.6	10
mMovie v1.5	10
mMovie v1.0	10

Introduction

Welcome

mMovie is a video recorder for Treo 600 devices. Some of the most important features of mMovie include:

- Record the video files directly on Treo 600
- Store recordings in the main memory or external SD card
- Play recordings
- Move movie files between main memory and SD card
- Recording duration limited only by available memory or SD card free space
- Intuitive and easy to use UI
- Optimized for Treo 600
- Exporting movie file to JPEG images
- Exporting movie file to AVI format for playback on desktop computer

Thank you for choosing mMovie!

Palm OS Basics

This manual assumes the user has knowledge of fundamental Palm OS concepts. If you are unsure how to run an application or other related concepts, please consult the user's guide that came with your communicator.

Installation

The mMovie Package

The package should contain the following in a zip file:

- mMovie Palm OS “.prc” file
- This Guide in PDF format

Requirements

- A Treo 600 Communicator from PalmOne
- Treo software update version 1.12 or later

Installing Your Software

To install mMovie simply double click the mMovie installation PRC file or use the Palm Desktop Installer tool. The Palm Desktop Installer tool is usually located in `Start/Programs/Palm_Desktop/Install Tool` folder.

If you are unsure how to install an application on your communicator, please consult the manual that came with it.

About the Demo Version

The demo version of mMovie is fully functional during the 5 days trial period. After the trial period expires, mMovie will disable its recording features and remain in that state until you register.

Registering

If you decide to purchase mMovie, you will need to register it to enable all the features of the software after the trial period.

When you purchase the mMovie, the registration code will be sent to you via e-mail. **Please make sure that you have used the correct e-mail address during the purchase process.**

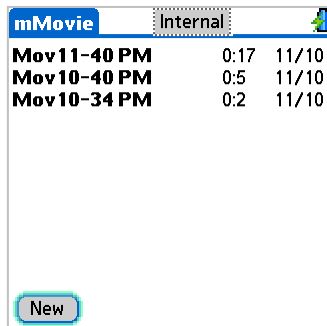
To enter your registration code, run mMovie and tap the mMovie application name (located in the upper left corner of the screen). A popup menu will appear. Choose the “Register” option from the menu and a registration form will appear. Enter your registration code into the appropriate input field and follow the on-screen instructions.

Using mMovie

Overview

With mMovie you can record and play video files on your Treo 600. The recordings are kept in the device memory or on an external SD card.

Using mMovie



The main mMovie screen shows the recordings you have stored on your device. For each recording its name, duration and the date when it was recorded is shown.

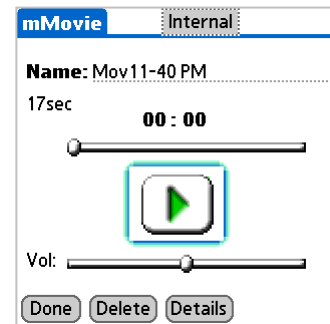
In the top of the main form there is an option trigger for switching between “Internal” and “External” modes. While you are in “Internal” mode, mMovie will show recordings stored in main memory. “External” mode will show the recordings stored on SD card.

When you record the new movie, it will be recorded either in main memory, or on the SD card depending on the status of this option.

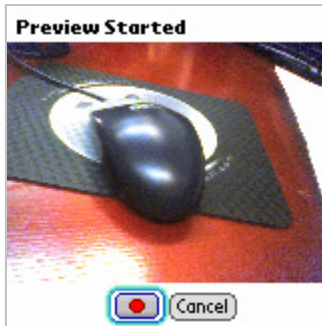
You can tap the recording name, or select it with the 5-way navigation keys to play a video recording. When you select a recording, an edit form will be displayed.

On the edit form you will be able to:

- **Change the recording name.** Enter the new name in the “Name” field and select the “Done” button.
- **Play the recording.** Select the play button in the middle of the screen.
- **Adjust the position in the recording from which you want to begin the playback.** Move the upper slider left or right to select the place inside the recording from which to begin playback.
- **Adjust volume.** Use the lower slider named “Vol” to adjust the playback volume.
- **Change the privacy status of recording.** Select the “Details” button and define if the recording should be marked as private.
- **Permanently remove the recording.** Select the “Delete” button.
- **Exporting movie file to jpeg images.** Select “Export to JPG...” option from menu and export form will show up.
- **Exporting movie file to AVI format.** Select “Export to AVI...” option from menu. The AVI file will be created in the /mMovie folder on your SD card.



Recording Movie



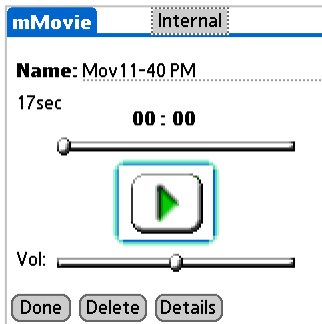
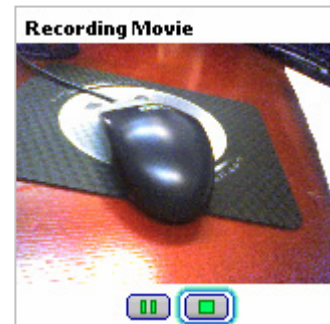
You can record a new movie file by selecting the “New Movie” button on the main mMovie screen.

A recording form will appear. By default, the new recording will be placed in the category currently selected on the main form: if that category is “External” a recording will be saved in the “/mMovie” folder on your SD card. Otherwise, the file will be recorded in the main memory.

Note: Recording directly to SD card may produce a movie of substantially lower quality than recording to main memory.

You can start the recording by selecting the red record button on the bottom of the screen. Also, you can cancel the recording by pressing the “Cancel” button on the bottom of the screen.

You can pause/resume a recording by selecting the “Pause” button, or you can stop recording by selecting the stop button.



When you are done with recording, select the stop button on the bottom of the screen. The edit form will appear allowing you to instantly change some of the recording's properties.

The default name of new recording will be the word “Mov” followed by the time of day when the recording started.

JPEG Export

On the JPEG export form you will see how many frames the movie file contains and also have the option to change the quality of the “jpeg” files in which your movie file will be exported.

When you are satisfied with all settings you just need to press the “Export” button on the bottom of the screen and the movie file will be exported into a series of JPG images.



AVI Export

You can export your movie to AVI format suitable for playback on desktop computers. To do so, select the “Export to AVI...” option from the “Export” menu.

The AVI export form will appear allowing you to initiate the export process.

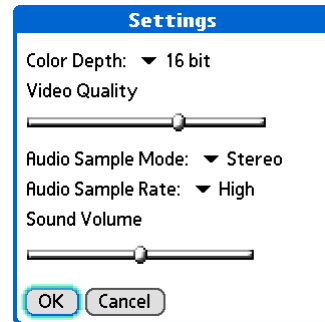


mMovie Settings

From the option menu you can go to the “Settings” screen by selecting the “Settings” option from the main menu.

On the settings screen you have several options for changing recording options:

- You can change the Color depth to another value. The default is 16 bit and you can change it to 8 bit (256 colors) or 2 bit (black and white).
- The “Video Quality” options control how many images will be recorded per second. The higher this value is, the smoother the movie will be, but it will also occupy more memory.
- You can change Audio sample rate which is used for sound recording, as well as sample mode (mono or stereo) and initial sound recording volume.



Moving File To and From SD Card

To move a recording from main memory to SD card, select the recording on the mMovie main screen and change its category to “SD Card”. mMovie will move the file to the “/mMovie” folder on the SD Card.

Similarly, to move a file from SD card to main memory change its category from “SD Card” to some other value and mMovie will move the file to main memory.

Frequently Asked Questions

1. What does mMovie do?

mMovie is a movie recorder and player for Treo 600 devices.

2. What are the mMovie requirements?

mMovie is designed only for Treo 600 devices and cannot be used on any other handhelds. Also, you should install the latest Treo Updater software available from PalmOne as the Treo 600 cannot record movies without this upgrade.

3. Do I have to install Treo Updater?

The Treo Updater is the system software update which you must have installed on your device for mMovie to work properly. Here is what to do to determine if you have to install the Treo Updater:

- Launch the Phone application (press hard key 1 on your Treo)
- Press Menu button
- From the Options menu select Phone Info
- In the Phone Info screen read the numbers after "Software." Look at the number after the "Treo 600-."
- If your software version number is lower than 1.12, you should download and install the Treo Updater.

4. Where can I find the Treo Updater?

The Treo Updater is available from the PalmOne Web site. At the time of publishing this document, the correct URL is:

http://www.palmone.com/us/support/downloads/treo/treo_600_updater.html

5. How can I transfer the recordings to my desktop PC?

To share your movies between your Treo and desktop computer, move the recording to the SD card and, using the SD card reader attached to your PC, copy the files from "/mMovie" folder to a local hard disk.

6. Can I use mMovie without SD card?

Yes, you can. You can save your recordings to main memory.

7. Can mMovie record directly to SD card?

Yes, with mMovie you can record either in main memory or directly on SD card. To record directly on SD card, select the "External" option at the top of main mMovie screen and then select the "New" button. **Note:** On many SD cards, recording directly to the card produces bad recording quality because of low SD card speed.

8. Can I move a recording from main memory to SD card and vice versa?

Yes – just change the category the recording belongs to. All recordings belonging to "SD Card" category will be stored on SD card, while all other recordings will be in main memory.

9. When I record directly to the SD card, the recording is significantly poorer than when recording in main memory. What is the cause of this?

Some SD cards are known to be very slow with read/write operations which cause the video recording directly to such cards to be of a very low quality. Unfortunately, there is nothing much that mMovie can do about it, since it is a hardware limitation of the SD card.

You can, however, record to main memory and then move the recording to SD card (just change its category to "SD Card").

Revision History

mMovie v1.7

- Maintenance release

mMovie v1.6

- Upgraded registration procedure

mMovie v1.5

- Added support for AVI file format
- UI improvements
- JPEG export improvements

mMovie v1.0

- Initial release