

MOTION
APPS

mVoice v4.2
For the palmOne Treo™ 650 and Treo™ 600

mVoice v4.2

User Manual

Disclaimer

Information in this document is subject to change without notice and does not represent a commitment on the part of MotionApps. The software and the solutions described in this document are furnished under a license agreement. It is against the law to copy or reverse engineer the software or solutions except as specifically allowed in the license agreement. No part of this manual may be reproduced or transmitted in any form or by any means, electronic or mechanical, including photocopying and recording, for any purpose without the written permission of MotionApps.

This software, all manuals as well as all solutions are copyright ©2005 MotionApps. All rights reserved. Printed in the United States of America.

Companies, names, and data used in examples herein are fictitious unless otherwise noted.

MotionApps and mVoice are trademarks of MotionApps.

All other product names are trademarks or registered trademarks of their respective holders, used only to the owner's benefit, without the intent to infringe.

IMPORTANT - Read the full license terms and conditions below before installing. This License provides you with limited rights to use the software, conditioned upon your continued compliance with these terms and conditions. INSTALLATION OF THIS SOFTWARE WILL CONSTITUTE YOUR ACCEPTANCE OF THESE TERMS AND CONDITIONS.

END-USER LICENSE

Under single End-User License, you may use this program only on a single communicator, together with the related computer(s) used by you in conjunction with that communicator.

You may not use the program for any unlawful purpose, including infringement of the copyrights or other proprietary rights of others, or in any illegal manner or for creation or distribution of illegal content. You agree to indemnify MotionApps for any and all claims arising from any violation by you of the terms of this End-User License.

The following warranty and liability disclaimer apply to this product.

THIS PROGRAM IS PROVIDED "AS IS" WITHOUT WARRANTY OF ANY KIND, EITHER EXPRESS OR IMPLIED, INCLUDING BUT NOT LIMITED TO ANY IMPLIED WARRANTY OF MERCHANTABILITY, NON-INFRINGEMENT OR FITNESS FOR A PARTICULAR PURPOSE, ALL OF WHICH MOTIONAPPS SPECIFICALLY DISCLAIMS, TO THE MAXIMUM EXTENT PERMITTED BY LAW. THE ENTIRE RISK AS TO THE RESULTS AND PERFORMANCE OF THE PROGRAM IS ASSUMED BY YOU. SHOULD THE PROGRAM PROVE DEFECTIVE, YOU (AND NOT MOTIONAPPS OR ITS DISTRIBUTORS OR DEALERS) ASSUME THE ENTIRE COST OF ALL NECESSARY SERVICING, REPAIR OR CORRECTION.

NEITHER MOTIONAPPS NOR ANYONE ELSE WHO HAS BEEN INVOLVED IN THE CREATION, PRODUCTION, OR DELIVERY OF THIS PROGRAM SHALL BE LIABLE FOR ANY DIRECT, INDIRECT, CONSEQUENTIAL OR INCIDENTAL DAMAGES, LOST PROFITS, BUSINESS INTERRUPTION OR LOSS OF INFORMATION ARISING OUT OF THE USE, THE RESULTS OF USE, OR INABILITY TO USE SUCH PROGRAM, OR DAMAGE OF LOSS CAUSED BY THE PROGRAM, EVEN IF ADVISED OF THE POSSIBILITY OF SUCH DAMAGES OR CLAIM. SOME STATES DO NOT ALLOW THE EXCLUSION OR LIMITATION OF LIABILITY FOR CONSEQUENTIAL OR INCIDENTAL DAMAGES SO THE ABOVE LIMITATION MAY NOT APPLY TO YOU.

TO THE MAXIMUM EXTENT PERMITTED BY LAW, MOTIONAPPS' ENTIRE LIABILITY AND YOUR EXCLUSIVE REMEDY IN THE EVENT OF A BREACH OF MOTIONAPPS' OBLIGATIONS IS LIMITED TO A REFUND OF ANY LICENSE FEE YOU ACTUALLY PAID TO MOTIONAPPS FOR THIS PROGRAM.

Table of Contents

Table of Contents	3
Introduction.....	5
Welcome.....	5
Palm OS Basics	5
Installation.....	6
The mVoice Package.....	6
Requirements	6
Installing Your Software	6
About the Demo Version	6
Registering.....	6
Using mVoice.....	7
Overview.....	7
Using mVoice.....	7
Recording Sound	8
Recording phone calls.....	9
One-Button Recording.....	9
Tips for Recording Phone Calls.....	9
Changing Recording Quality.....	10
Setting Alarms	10
Moving File To and From SD Card	11
Frequently Asked Questions.....	12
Revision History	14
mVoice v4.2.....	14
mVoice v4.0.....	14
mVoice v3.6.....	14
mVoice v3.5.2.....	14
mVoice v3.5.1.....	14
mVoice v3.5.....	14
mVoice v3.0.....	14
mVoice v2.5.....	14
mVoice v2.0.....	14
mVoice v1.6.5.....	14
mVoice v1.6.....	15
mVoice v1.5.....	15
mVoice v1.2.2.....	15

mVoice v1.2.1..... 15
mVoice v1.2..... 15
mVoice v1.0..... 15

Introduction

Welcome

mVoice is a sound recorder for Treo 600 and Treo 650 devices. Some of the most important features of mVoice include:

- Record sound files directly on Treo
- Record phone calls directly on Treo
- Store recordings in the main memory or external SD card
- Organize recordings into categories
- Play recordings
- Select recording quality
- Append existing recordings
- Move sound files between main memory and SD card
- Send recordings by e-mail
- Beam recordings over IR
- Start recording a new file with a single key press
- Recording in background while the screen is turned off
- Sounds are recorded in a highly compressed audio format compatible with most platforms and operating systems
- Recording duration limited only by available memory or SD card free space
- Intuitive and easy to use UI
- Optimized for Treo 600/650

Thank you for choosing mVoice!

Palm OS Basics

This manual assumes the user has knowledge of fundamental Palm OS concepts. If you are unsure how to run an application or other related concepts, please consult the user's guide that came with your communicator.

Installation

The mVoice Package

The package should contain the following in a zip file:

- mVoice Palm OS “.prc” file
- mVoice conduit setup file
- This Guide in PDF format

Requirements

- A Treo 600 or Treo 650 Communicator from PalmOne
- Treo software update version 1.12 or later
- Windows desktop computer with HotSync manager installed (for conduit only)

Installing Your Software

To install mVoice simply double click the mVoice installer PRC file or use the Palm Desktop Installer tool. The Palm Desktop Installer tool is usually located in Start/Programs/Palm_Desktop/Install Tool.

To install mVoice conduit double click the mVoice conduit setup executable file and follow the instructions.

If you are unsure how to install an application on your communicator, please consult the manual that came with it.

About the Demo Version

The demo version of mVoice is fully functional during the 5 day trial period. After the trial period expires, mVoice will disable its recording features and remain in that state until you register.

Registering

If you decide to purchase mVoice, you will need to register it to enable all the features of the software after the trial period.

When you purchase mVoice, the registration code will be sent to you via e-mail. **Please make sure that you have used the correct e-mail address during the purchase process.**

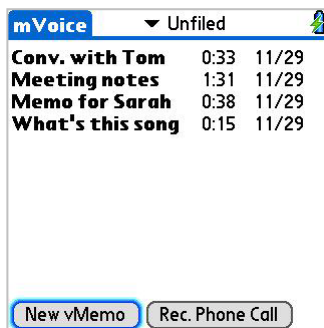
To enter your registration code, run mVoice and tap the mVoice application name (located in the upper left corner of the screen). A popup menu will appear. Choose the “Register” option from the menu and a registration form will appear. Enter your registration code into the appropriate input field and follow the on-screen instructions.

Using mVoice

Overview

With mVoice you can record and play sound files on your Treo. The recordings are organized in categories in the same way your textual memos are organized in the MemoPad or to do items in the To Do application.

Using mVoice

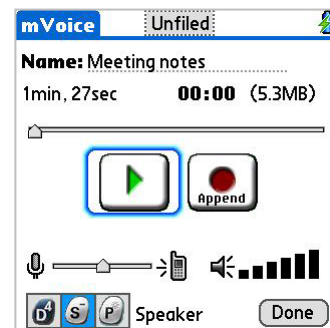


The main mVoice screen shows the recordings you have stored on your device. For each recording its name, duration and the date it was recorded is shown. A small clock icon to the right of the recording date indicates that an alarm is set for that recording. Alarms are described in further detail below.

You can tap the recording name, or select it with the 5-way navigation keys to play or modify its properties. When you select a recording, the edit form will be displayed.

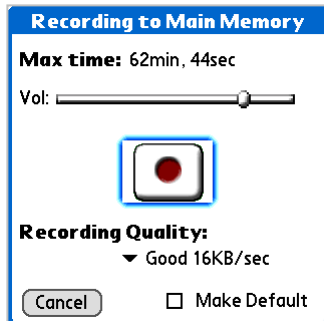
On the edit form you can:

- **Change the recording name.** Enter the new name in the "Name" field and select "Done" button.
- **Play the recording.** Select the play button in the middle of the screen.
- **Append recording.** Select the "Append" button in the middle of the screen to record more data at the end of the current recording.
- **Adjust the position in the recording from which you want to begin the playback.** Move the upper slider left or right to select a place inside the recording from which to begin playback.
- **Adjust volume.** Use the lower slider above the "Done" button to adjust the playback volume. The slider can also be used to change the volume during the playback.
- **Adjust stereo channel.** Use the slider above the "D S P" buttons to adjust the volume for each stereo channel. If a phone call has been recorded this feature allows for the adjustment of the relative volume between the user and the caller at the other end. (Requires that a "phone" quality setting was chosen for the recording.)
- **Change the recording category.** Use the drop down list in the upper right corner to change the category the recording belongs to. You can use the same drop down list to add, edit or delete categories.
- **Change the privacy status of the recording.** Select the "Details" option in the menu and define if the recording should be marked as private.
- **Change the output channel.** The D, S and P buttons stand for Default (sound will go through the speaker, or through headphones if attached), Speaker (sound will go through speaker regardless of headset), and Phone (sound will go through the regular phone speaker as in phone calls).
- **Send the recording as an e-mail attachment.** Select the "Send" option from the menu and select which E-Mail application you want to use in the "Send With" dialog that appears. A new e-mail message will be created and the recording will be attached to it.



- **Beam the recording.** Select the “Beam” option from the menu and the recording will be beamed over IR to the receiving device. **Note:** Receiving device must have mVoice installed to be able to accept the recording.
- **Permanently remove the recording.** Select the “Delete” option from the menu.
- **Setup alarm for recording.** Select the “Alarm” option from the menu and define alarm time for the recording. Alarms are described later.
- **Remove static from recording.** Select the “Remove Static” option from the menu and mVoice will remove static noise from the recording.

Recording Sound

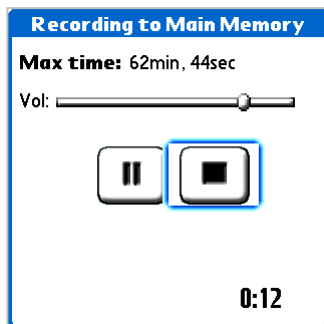


You can record a new sound file by select either the “New vMemo” or the “Rec. Phone call” button on the main mVoice screen, according to the type of recording wanted. You can also use the one-button recording feature described later.

A recording form will appear. The form’s title show if the sound file will be recorded in the main memory or on the SD card. By default, the new recording will be placed in the category currently selected on the main form: if that category is “SD Card” a recording will be saved in the “/mVoice” folder on your SD card. Otherwise, the file will be recorded in the main memory.

The recording form shows the maximum duration of the new recording, which depends on the free space in the main memory or on the SD card. You can change recording quality by selecting one of the predefined qualities from the popup list. If you want to set default quality to selected quality check “Make Default” checkbox. Also, you can change default recording quality by selecting Settings from the application menu.

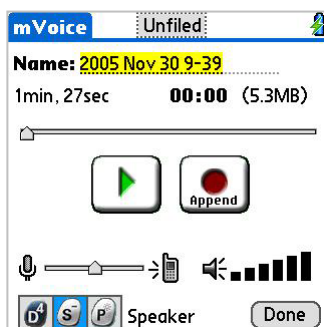
You can start the recording by selecting the large record button in the middle of the screen.



During the recording, mVoice will show a time counter displaying currently recorded sound duration. You can pause/resume the recording by selecting the “Pause” button.

You can adjust the recording volume with the “Vol” slider before, or during the recording.

During the recording process you can safely turn off the device, or allow it to turn off automatically – the recording process will continue in the background. This can significantly save your battery when you are recording large clips. Also you can leave mVoice by pressing the “home” button and launch other applications, mVoice will continue to record in the background until you launch mVoice again and stop the recording. While the recording is in progress, the Treo’s LED will be red indicating that mVoice is recording.



When you are done recording, select the stop button in the middle of the screen. The edit form will appear allowing you to instantly change some of the recording’s properties.

The default name of a new recording will be the date and time of the day when the recording started.

Recording phone calls

mVoice is able to record phone calls directly to your Treo 650. To record phone calls select the "Rec. Phone Call" button on the main mVoice form or use the One-Button activation method described below.

It is possible to record phone calls using a headset, though to be able to listen to the playback through a headset a stereo headset is required.

For Treo 600 direct phone call recording is not available, however phone calls can be recorded having the following in mind:

- If you are using a headset you will be able to record only your voice - sound from the other side of a call cannot reach mVoice since Treo directs it to the ear speaker.
- If you are not using a headset, sound from both participants of the phone call will be recorded, but to make it usable you should turn on the "Speaker Phone" option after answering the call, and increase recording volume in mVoice.

One-Button Recording

One-Button recording is a feature that enables you to instantly start recording a new sound file with a single key press on one of four Treo hard keys, no matter which application is currently active.



To enable One-Button recording, select one of the Treo's hard keys in the Settings form (select the "Settings" item from mVoice main menu). Then exit mVoice and press and hold that button and after approx. one second the recording screen will pop up.

If you check the "Stop recording when released" option on the settings form, mVoice will stop the recording session as soon as you release the button. Otherwise, mVoice will continue to record sound until you press and hold the defined button again.

Note: if you press the hard key in a usual way, i.e. if you press and release it without holding it for one second, mVoice will not start recording and the hard key will perform as usual, i.e. it will launch

the application assigned to it. **There is no need to assign mVoice to a hard key in the Treo's system Preferences application**, but you can do so if you wish.

You can define if the One-Button recordings will be saved in main memory or on SD card in mVoice settings dialog. Select the "Settings" item from mVoice main menu and check the appropriate option to store One-Button recording to SD card. Also you can define when to play beep sound. Select one of the following options from the "Recording beep" drop down list: "On", "Off" or "One button only".

Tips for Recording Phone Calls

The easiest way of recording phone calls with mVoice is to use the one-button recording feature. To achieve this, configure mVoice in following way:

1. Launch mVoice and open the "Settings" dialog.
2. Select a hard key you want to use to activate recording
3. Check "Record on SD card" option to store your recordings on SD card
4. Clear (i.e. un-check) the "Stop recording when released" option.
5. Select one of the two available "Phone" recording qualities in the "Recording Quality" drop down

With this setup in place you can start recording phone calls by pressing and holding the selected hard key for one second. mVoice will start recording. You can go back to Phone application or

use your Treo in usual way during the phone call while the recording session is in place. To stop recording, press and hold selected hard key again.

Changing Recording Quality

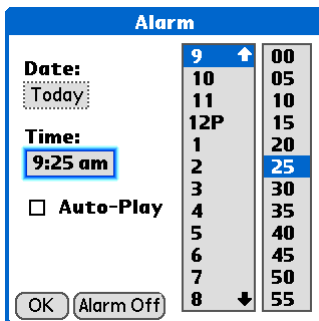
You can change default recording quality by selecting one of the predefined qualities from the popup list on the bottom of the settings screen. Be careful by selecting recording quality, better quality require more memory space on your device or SD card.

Setting Alarms

You can set alarms to automatically play saved recordings.

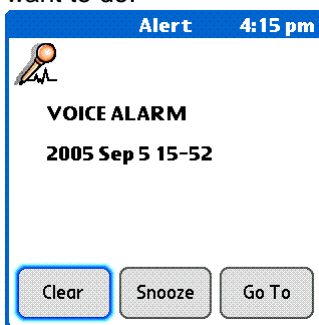


To set an alarm first set up the alarm preferences. You can do that by tapping on the Alarms button on the settings screen. When you finish tap on the “Done” button.



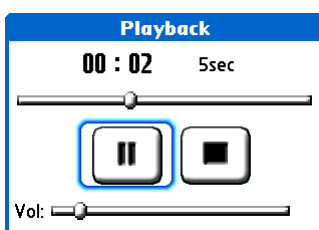
After you have set the alarm preferences select the Alarm option from the menu on the playback screen and set alarm time. Check Auto-Play checkbox if you wish the sound to be automatically played.

When an alarm is triggered and the Auto-play option is not selected you will be asked what you want to do.



Choose “Clear” to dismiss the alarm, “Snooze” to snooze the alarm or “Go To” to play the recording.

If you chose the “Go To” option the alarm playback screen appears.



Moving File To and From SD Card

To move a recording from main memory to SD card, select the recording on the mVoice main screen and change its category to “SD Card”. mVoice will move the file to the “/mVoice” folder on the SD Card.

Similarly, to move a file from SD card to main memory change its category from “SD Card” to some other value and mVoice will move the file to main memory.

Frequently Asked Questions

1. What does mVoice do?

mVoice is a sound recorder and player for Treo 600/650 devices.

2. What are the mVoice requirements?

mVoice is designed only for Treo 600 and Treo 650 devices and cannot be used on any other handhelds. Also, you should install the latest Treo Updater software available from PalmOne because without this upgrade Treo cannot record sound.

3. Do I have to install Treo Updater?

If you have a Treo 650, you don't. If you have a Treo 600 read on.

The Treo Updater is the system software update which you must have installed on your Treo 600 for mVoice to work properly. Here is what to do to determine if you have to install Treo Updater:

- Launch the Phone application (press hard key 1 on your Treo)
- Press Menu button
- From the Options menu select Phone Info
- In the Phone Info screen read the numbers after "Software." Look at the number after the "Treo 600-."
- If your software version number is lower than 1.12, you should download and install the Treo Updater.

4. Where can I find Treo Updater?

The Treo Updater is available from the PalmOne Web site. At the time of publishing this document, the correct URL is:

http://www.palmone.com/us/support/downloads/treo/treo_600_updater.html

5. Which format does mVoice use for storing recordings?

Depending of recording quality mVoice stores your recordings in CCIT μ Law or PCM WAV file format. CCIT μ Law WAV format is a highly compressed audio format compatible with many operating systems and platforms. You can play the sound files recorded with mVoice with Windows Media Player and other popular tools.

6. How can I transfer the recordings to my desktop PC?

There are three ways to achieve this: 1) Use the mVoice Conduit 2) send an e-mail to yourself from mVoice attaching the sound file, or 3) move the recording to SD card and, using the SD card reader attached to your PC, copy the files from the "/mVoice" folder to a local hard disk.

7. What is the size of the recordings?

Depending on recording quality mVoice uses the sampling rate of 8000, 16000 or 22050 bytes per second (mono or stereo). This means that sizes of the recordings can drastically differ. If you use lowest quality (8 KHz mono, μ Law compressed recording) then a recording of 10 seconds will occupy approximately 80KB of memory. On a 64MB SD card you can record more than two hours of sound at this quality.

8. Can I use mVoice without SD card?

Yes, you can. You can save your recordings to main memory.

9. Can mVoice record directly to SD card?

Yes, with mVoice you can record either in main memory or directly on SD card.

10. Can I move a recording from main memory to SD card and vice versa?

Yes – just change the category the recording belongs to. All recordings belonging to the "SD Card" category will be stored on the SD card, while all other recordings will be in main memory.

11. Can I record phone calls with mVoice?

Yes, mVoice is capable of recording phone calls directly on Treo 650. For Treo 600 direct phone call recording is not available, however phone calls can be recorded having the following in mind:

- If you are using a headset you will be able to record only your voice - sound from the other side of a call cannot reach mVoice since Treo directs it to the ear speaker.
- If you are not using a headset, sound from both participants of the phone call will be recorded, but to make it usable you should turn on the "Speaker Phone" option after answering the call, and increase recording volume in mVoice.

12. Can I use a headset with mVoice?

Yes, you can use a headset to record audio and to listen to recorded files, but only on Treo 650 devices. Also, if you are recording using the best quality option (22 KHz, stereo) you will not be able to listen to that recording with a mono headset. To avoid this, either use a stereo headset with Treo 650, or record using some other recording quality. This limitation exists because of Treo 600 and Treo 650 hardware limitations.

13. How can I transfer recordings to the PC using the mVoice conduit

To transfer recordings to the PC you need to install mVoice conduit. Just perform the HotSync process and your recordings will be placed in folder named "mVoice" located in your HotSync user folder.

14. I cannot find any recordings on my computer after the HotSync process.

The recording files will be saved by default in C:\Program Files\palmOne\.....\mVoice (path may differ depending upon how you have setup your computer).

15. When I record directly to SD card, the recording is significantly poorer than when recording in main memory. What is the cause of this?

If you record and then playback directly to/from an external SD card, the performance may be poor. This is because many SD cards are not fast enough to accept the real-time data feed during the recording process. In other words, the SD card is not fast enough to save the required number of sound data in real time. This is a well known problem with SD cards and until SD cards manufacturers increase the speed of their cards, there is no direct solution to this problem.

Since this is the hardware limitation of an SD card, there is not too much that mVoice can do about it, even though an improvement was made with the extra buffer system implemented in mVoice 3.5.

However, there are a few other workarounds for this problem, if you are willing to accept some trade offs:

1. Obtain a faster SD card. There are some SD cards that are fast enough, but it is hard to find them. For example, Panasonic is selling fast SD cards for use in their digital camcorders. If it is possible, you should try the SD card before purchase to see if it fits your needs.
2. Record to the main memory, instead of to SD card. Once you record the sound to main memory, you can move it to SD card to free up the space in main memory. Playback of sounds that were recorded to main memory and afterwards transferred to SD card should be fine unless you have a really slow SD card.

Revision History

mVoice v4.2

- Improved phone call recording feature
- Improved on-button recording feature

mVoice v4.0

- Added true capability of recording phone calls directly
- Added support for multiple choice of output channel (Default, Speaker-only, Phone speaker)
- Added support for volume adjustments relative to channel for stereo recordings
- Included recording quality recommended for use with Dragon Naturally Speaking – speech recognition software

mVoice v3.6

- Maintenance release

mVoice v3.5.2

- Maintenance release

mVoice v3.5.1

- Maintenance release

mVoice v3.5

- Added alarms
- Added support for background playback/recording
- One button recording behavior changed. Now mVoice will record until you release hard key assigned to one button recording key
- Added “Remove Static” option
- Improved sound quality when recording to the SD card
- mVoice Conduit will now transfer recordings from SD card to desktop PC

mVoice v3.0

- Added sound recording API

mVoice v2.5

- Added mVoice conduit
- Minor UI improvements
- Internal improvements

mVoice v2.0

- Added support to change recording quality
- Minor changes to UI
- Internal improvements

mVoice v1.6.5

- Added support for Treo 650 Side Button

- Minor internal updates

mVoice v1.6

- Added possibility to control the beep sound
- Added support for Treo 650

mVoice v1.5

- Improved one-button recording. As of v1.5 there is no need to assign mVoice to a hard key in system Preferences applications. Instead, define which hard key mVoice should use to start recording in mVoice preferences
- Minor improvements

mVoice v1.2.2

- Fixed issue with playback error on some devices (mostly by Verizon Wireless)
- mVoice will now remember the last used volume setting and use it as default

mVoice v1.2.1

- One-button recording will now automatically remove keyguard if it was on at the time when recording starts

mVoice v1.2

- Added possibility to append recordings with new data
- Better support for some e-mail clients
- Added beaming
- UI improvements
- One-button recording feature now automatically starts the recording – there is no need to confirm it
- Minor bug fixes

mVoice v1.0

- Initial release