

Contents

Features:	2
Requirements:	2
Getting Started:	2
Installing:	2
Running as portable application:	2
Starting MyPCInfo:	3
Displaying information:	3
Send and Save information:	4
Export data to xml files (2):	4
Send xml files via mail (3):	5
License and distribution:	5

Features:

- Collects a huge amount of hardware and software information.
- Does not need to be installed, just run the MyPCInfo.exe file.
- Exports information to xml files.
- Send mail containing the xml files.
- Nice and clear user interface.

Requirements:

MyPCInfo can be installed on a pc, or it can be run as a standalone application.

It has been tested on Windows XP, Windows 7, Windows 8, Server 2008 and Server 2012.

The operating system that it runs on needs to have .net framework 2.0 installed (Normally that is already the case).

MyPCInfo has to be able to write to the directory in which its installed or running, and the rights to access WMI data on the local machine.

Getting Started:

Unzip the MyPCInfo.Zip file

In the file you will find

“MyPCInfo.msi”, used to make a complete install on a PC.

“MyPCInfo.exe”, can be run directly without installation, you can execute it from your usb-stick.

“MyPCInfo User Manual.pdf”.

Installing:

You install MyPCInfo by executing MyPCInfo.msi.

The installation is straight forward. Choose which directory you want the file, and if you want the application to be available to everyone.

Running as portable application:

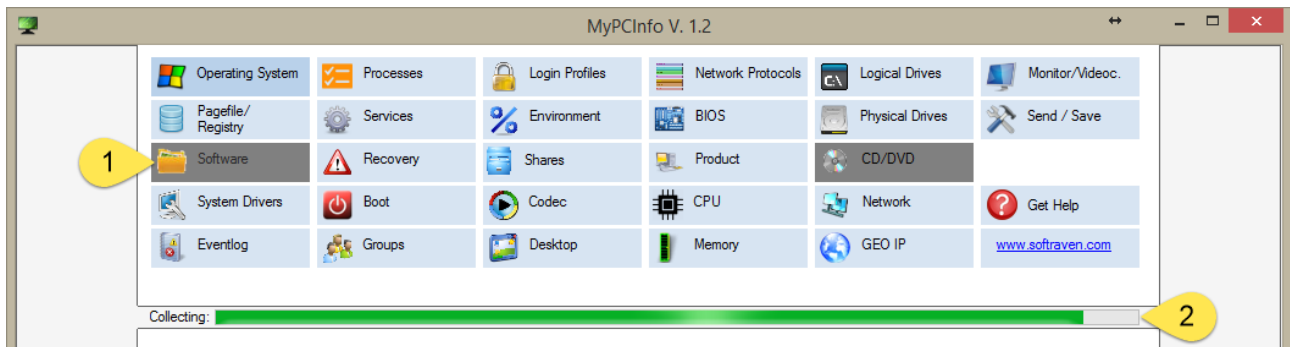
Executing the file MyPCInfo.exe, starts MyPCInfo directly without the need for installation.

If you save path settings and mail settings, beware that the files pathsettings.ini and mailsettings.ini are written to the directory where you placed the executable, MyPCInfo.exe.

The settings will be preserved and loaded at start up, if you keep the files together in one directory.

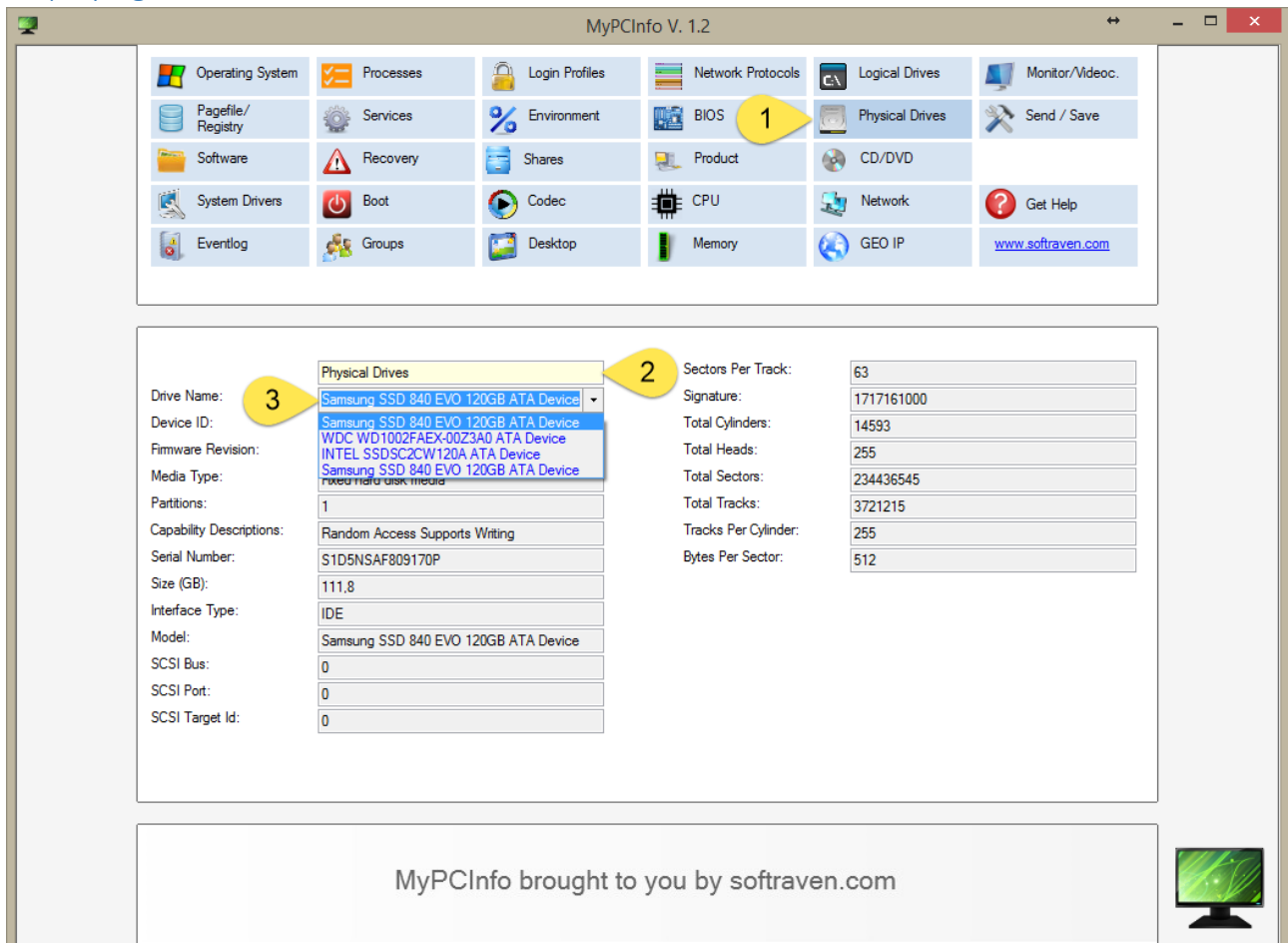
Both .ini files are encrypted, so you will not be able to read the password to your mail account etc.

Starting MyPCInfo:



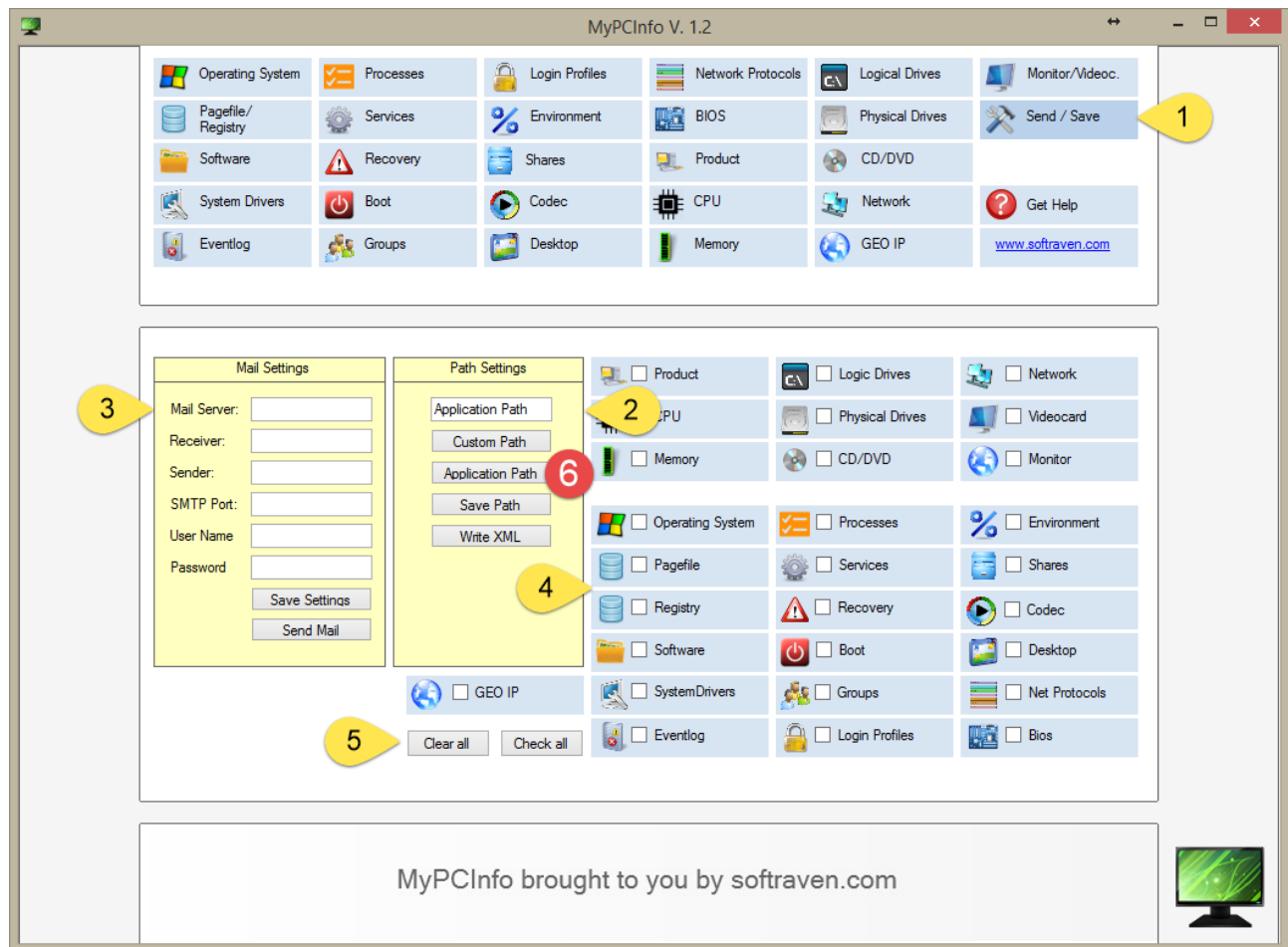
When MyPCInfo is executed it begins collecting data straight away. Some data is very quick to gather, while data like for instance software can take a little while. MyPCInfo buttons that are grey and disabled (1) indicates that this particular data is still collected. The progress can be viewed on the bar beneath the buttons (2).

Displaying information:



Click the button that represents the information you want to see (1). The result displays in the pane below. A yellow textbox indicates what information is shown (2). If there are several elements to show, a dropdown box will appear (3), just below the yellow textbox (2).

Send and Save information:



Export data to xml files (2):

- Textbox that displays path. Default setting is "Application Path" when MyPCInfo is running as a standalone application. Otherwise the path is set to "C:\Softraven".
- "Custom Path" – Point to a path of your own choosing.
- "Application Path" (6) – XML Data is saved in the same spot as MyPCInfo.exe resides.
This button is ONLY available when MyPCInfo is run as a standalone application and not as installed application.
- "Save Path". When running as a standalone application the file Pathsettings.ini are saved in the same directory as MyPCInfo.exe resides.
- "Write XML" – Writes XML files to the disk at your chosen path.
- Click "Check All" (5) to select all checkboxes.
- Click "Clear All" (5) to deselect all checkboxes.

To write xml files:

Choose what information (4) you want to export as xml files, and click "Write XML"

The files are saved in the directory indicated in the path textbox.

Send xml files via mail (3):

MyPCInfo can mail the XML files to you, just key in your mail configuration settings, select the categories you want (4) and click "Send Mail".

You can save the mail configuration to the disk by clicking "Save" (3).

When saving the path data a file named mailsettings.ini is written to the same directory as MyPCInfo.exe.

The information in the file is encrypted, so it is not possible to view confidential data, like the password.

License and distribution:

MyPCInfo is completely free to distribute as you please.

If you make the program available for download I only ask that you include a link to

<http://www.softraven.com>, <http://www.ipfetcher.com>, and credits to "Frank Weier Christiansen".