

Netbook Tracer

System Requirements

Windows based PC/Laptop (Tested on Windows XP/Windows 7)

External or integrated Web Cam (Optional)

Free 'googlemail' email account – <http://mail.google.com>

Netbook Tracer is a program used to try & keep track of any PC/Laptop in the event of it being stolen. The program runs as a Windows service & starts automatically when Windows starts. The program attempts to send information back to a user defined email address every time Windows starts. The information in the email report includes the following:

External IP Address – Used to find out ISP (Internet Service Provider) owner of IP Address e.g. Tiscali/Virgin/BT etc.

Current Culture – e.g. 'English (United Kingdom)'

Time Zone – e.g. 'GMT Standard Time'

Computer Name – Thief may be daft enough to use own name for PC name.

User Name – A list of user accounts (see above).

OS Version – Windows Version

Domain Name – If attached to a Domain (Probably WORKGROUP otherwise).

Whois of IP Address - Used to find out ISP (Internet Service Provider) owner of IP Address e.g. Tiscali/Virgin/BT etc.

Image (If web cam available)

The most important piece of information obtained is the PC's external IP Address. Once detected the program performs a Whois on the address. The Whois is only performed on one of the internet's Whois servers so it is possible no result could be returned. In this case using an internet based Whois such as <http://whois.domaintools.com/> would determine the ISP owner of the IP Address. Typing the IP Address into <http://www.geobytes.com/ipLocator.htm> would also give information on the ISP's server's geographical location. This information could be passed on to the authorities. ISP's know who are using all of their IP Addresses, although they will be reluctant to give out any personal information about a user unless the authorities are involved.

Installation

Netbook Tracer is distributed in a ZIP file containing the following files:

AForge.dll – Required for Web Cam image.

AForge.Video.dll – Required for Web Cam image.

AForge.Controls.dll – Required for Web Cam image.

AForge.Video.DirectShow.dll – Required for Web Cam image.

WCService.exe – Windows Service.

XMLSettingsConfig.exe – Program Configuration.

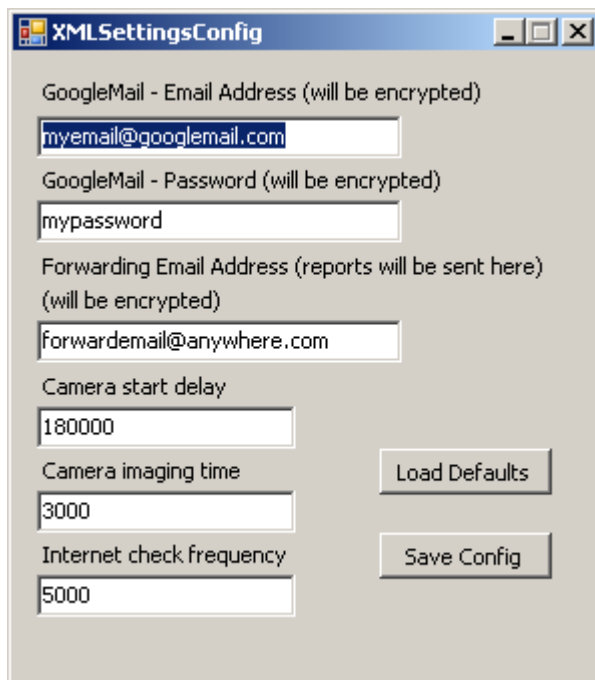
XMLSettingConfig.xml – Stores Program Settings (encrypted).

InstallService.bat – Used to install program.

UninstallService.bat – Used to uninstall program.

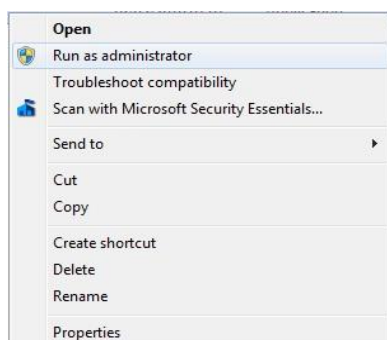
Licence.txt – End user licence agreement.

- 1) To install copy the above files into the 'Windows\system32' folder (administration account will be required to install service).
- 2) Run XMLSettingsConfig.exe (Windows 7 Right hand click exe & choose Run as administrator)



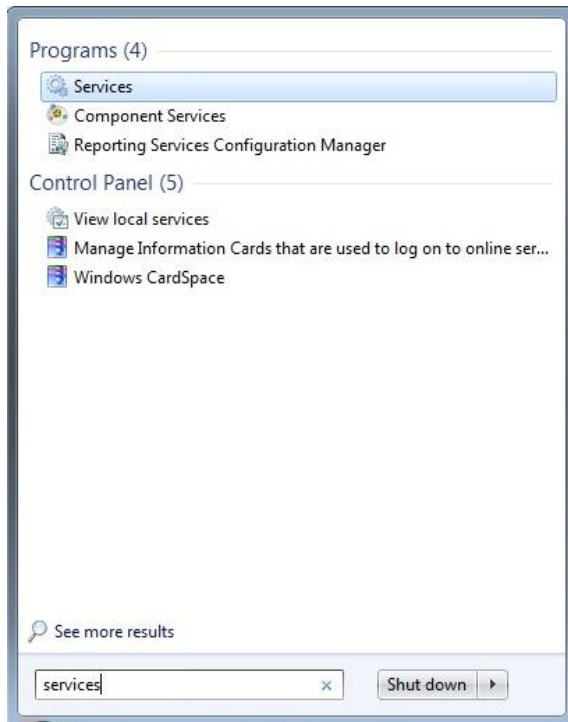
Enter your googlemail details & forwarding email address for the reports. Note: Don't use special characters in your googlemail email address or password (*,%, & etc) only use alpha numeric characters as the email code does not like special characters (for some unknown reason).

- 3) Delete XMLSettingConfig.exe (or store in a safe location on another PC/storage media to safeguard your email address & password details).
- 4) Run 'InstallService.bat' (Windows 7 Right hand click bat file & choose Run as administrator)

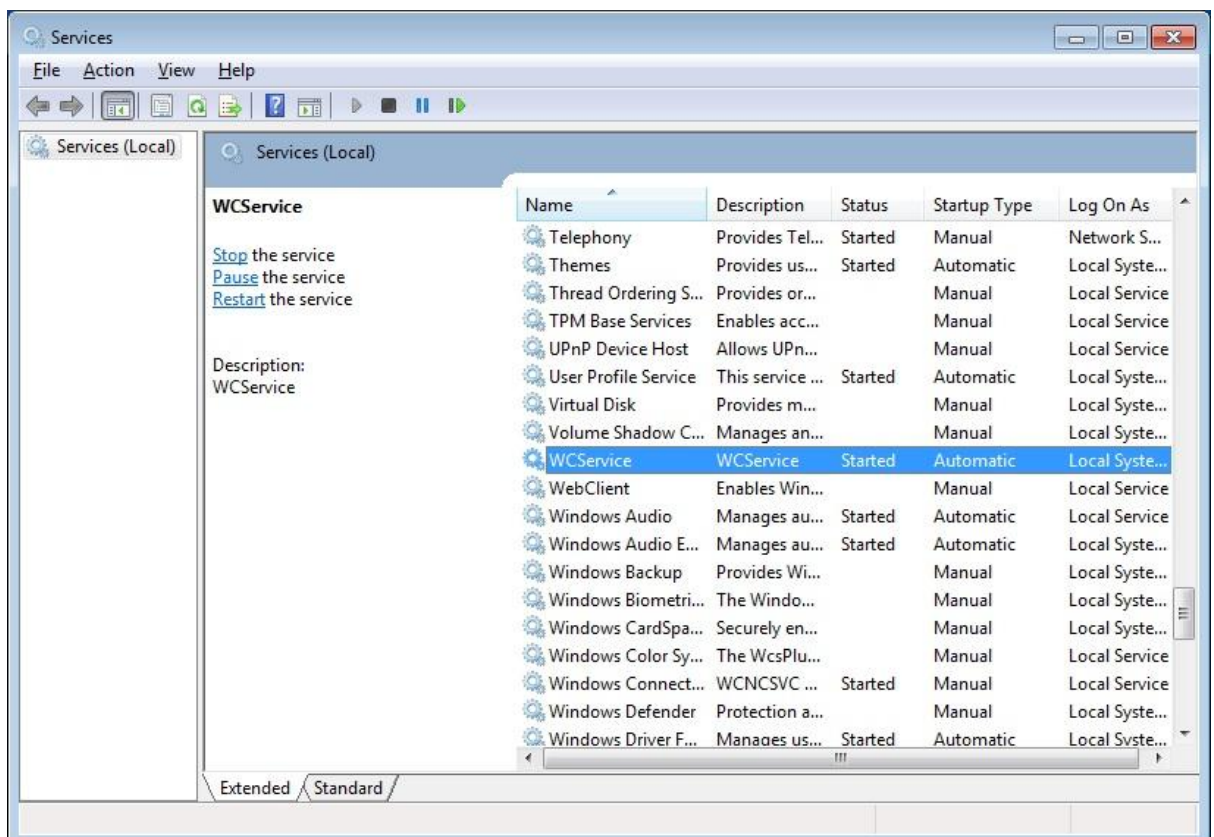


5) Check Service is running.

Windows 7 (Type services into command box then click on 'Services').



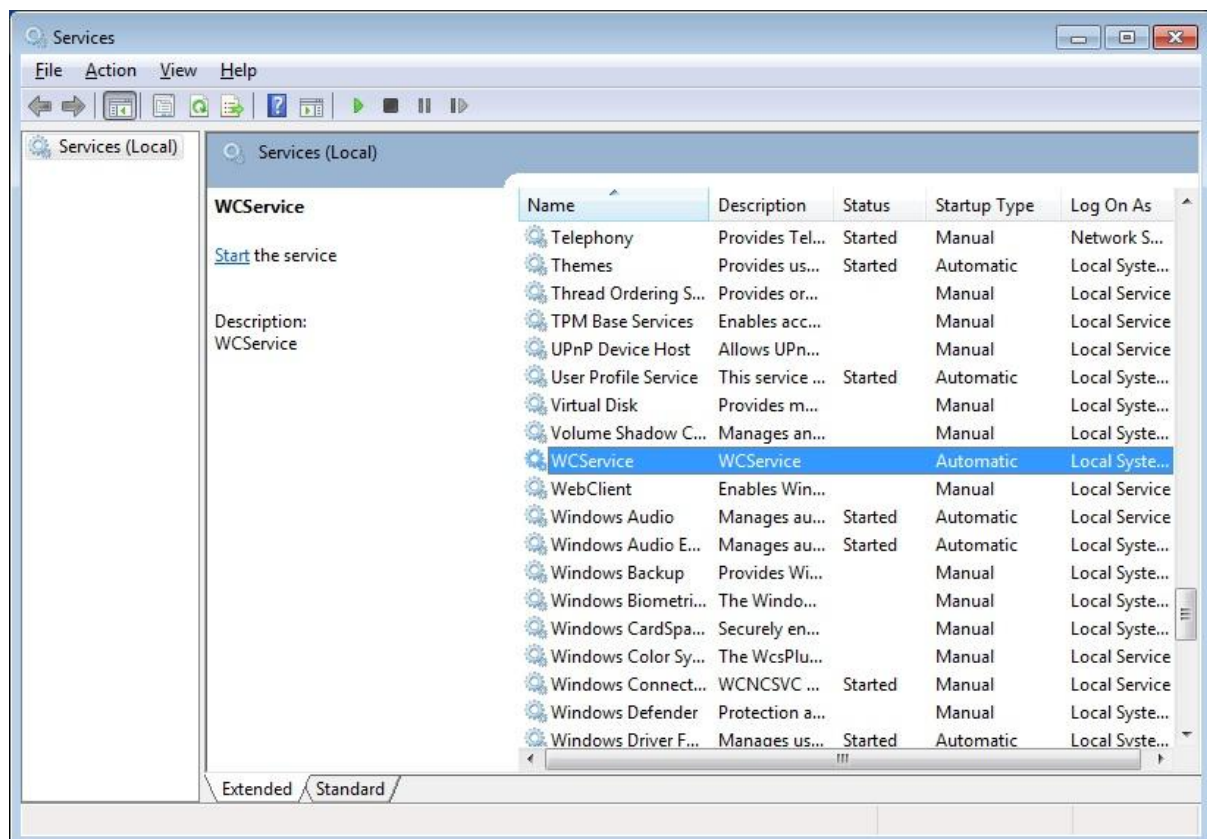
Windows XP (Start | Control Panel | Performance and Maintenance | Administrative Tools | Services).



- 6) Delete 'InstallService.bat' & 'UninstallService.bat' (or store in a safe location on another PC/storage media).

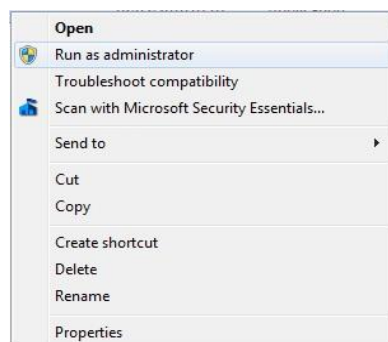
Upgrading

Navigate to 'Services' as above & click on Stop the service. Copy new 'WCService.exe' into 'Windows\System32' folders as previous. Restart the Service by clicking Start the Service.



Uninstallation

Run 'UninstallService.bat' (Windows 7 Right hand click bat file & choose Run as administrator)



Delete all files listed in distribution ZIP file.

Detailed Program Operation

Netbook Tracer is a Windows Service, a Windows Service starts when Windows starts. Logging on is not required for the program to start.

XMLSettingsConfig.exe is used to configure the program with your user preferences. A goooglemail email address is required so that no configuration changes on the stolen PC affects the programs ability to send an email. The goooglemail account is used as the 'From' account to send the email report to any user defined email address.

Camera Start Delay – Delay in milliseconds **before** the camera attempts to take a picture (60000 = 1 minute). A Web Cam needs to be initialized by Windows before it can be used by a program so a delay is required. (180000 is the default so hopefully the thief will be sat facing the web cam after a 3 minute time delay).

Camera Imaging Time – Camera 'on' time.

Internet Check Frequency – How often the program checks for internet connectivity.

When Windows starts Netbook Tracer starts. After the pre-defined camera delay time the program attempts to take a picture (even if no logon has been attempted). The program then checks for internet connectivity at a frequency set by the 'Internet Check Frequency' value. If an internet connection is found & access is granted the email report is sent to the 'Forwarding Email Address' entered into XMLSettingsConfig.exe (Netbook Tracer will check for internet connectivity for 1 hour after logon, if no connectivity is detected the check is cancelled until the next time the PC is booted). On a home network permission to access the internet is usually already setup so the email would probably be sent shortly after the picture has been taken. If the PC/Laptop is stolen it is unlikely internet access would be granted wherever the thief turns on the PC. This leaves a dilemma as we want the thief to be able to access the internet. Personally I have an account on my PC's that doesn't require a password, this may not be the most secure situation but I want the thief to be able to setup internet access & unknowingly send me reports of my PC's whereabouts as often as possible.

Note: All report data & images are stored in the PC's RAM until the report is sent. No data or image is ever written to disk so no trace of the programs activity can easily be monitored. If no internet connectivity is established within 1 hour the data is discarded.

FAQ

Q) Why is the camera start delay time fixed, why not just take a picture when an internet connection is available?

A) Some integrated web cams have an LED that illuminates when a picture is taken. Having a fixed camera start delay time gives the impression that the camera is performing some sort of self check as it happens at the same time on every boot sequence.

Q) Why do I get 'Image Unavailable' on my emailed report?

A) Either a web cam is not installed / compatible or the web cam has not had time to initialize. (Try increasing the camera start delay time).

©2010 Paul Wainwright

Netbook Tracer Support - support@pwsmoney.com