

Using NetBrain Qmap Reader



What can you do with Qmap Reader?

Contents

Section 1: About NetBrain Qmap Reader	3
Section 2: What can you do with NetBrain Qmap Reader.....	4
Activate Map Reader:.....	4
Opening Qmaps	5
Download Learning Maps	5
Viewing Qmaps	6
View and Navigate Qmaps	6
View Multiple Qmaps.....	6
Open Qmaps in Workstation.....	6
Map File Elements.....	7
Map Objects.....	7
Device Configurations within Qmaps.....	8
Map Data folders.....	8
Map Attachments.....	10
Map Notes.....	11
Printing Qmaps	12
To Preview a Qmap	12
To Print a Qmap	12
Update Qmap Reader	13

Section 1: About NetBrain Qmap Reader

NetBrain Qmap Reader is designed to help you make the most of any Qmap. While modifying Qmaps is not possible with the reader, it will allow you to open, view, and print Qmaps as well as view all attached data such as device configuration files, show command results, map attachments and map notes.

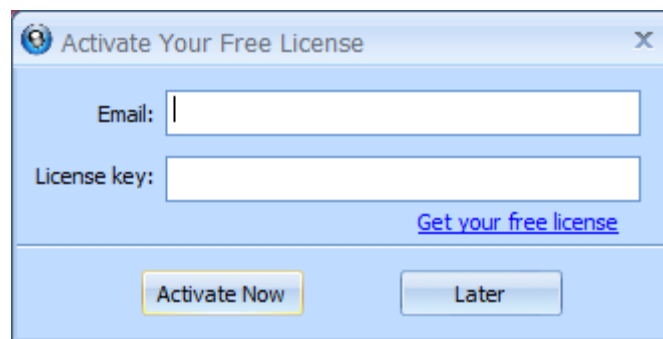
Section 2: What can you do with NetBrain Qmap Reader

Activate Qmap Reader

Qmap Reader can be used and distributed freely. Activation is requested in order to accumulate customer usage statistics for the purpose of improving the product.

The first time you open Qmap Reader, you will find the following pop-up window. You can ignore the window by clicking the Activate Later option. This will not hinder the functionality of the product. There is no expiration date even if you don't activate the license. This window will, however, prompt you to activate the product every time you open the reader.

To activate the software, you can click **Get your free license** to open the website. Fill out the form and use the email address and Activation key that has already been sent to your email address to activate the license.



The image shows a Windows-style dialog box titled "Activate Your Free License" with a close button (X) in the top right corner. The dialog has a light blue background. It contains two text input fields: "Email:" and "License key:". Below the "License key:" field is a blue hyperlink that says "Get your free license". At the bottom of the dialog, there are two buttons: "Activate Now" (highlighted with a yellow border) and "Later".

[Opening Qmaps](#)

Download Learning Maps:

Upon opening the Qmap Reader, there will be a **Download Qmaps from NetBrain Qmap Center** link in the center of the start page. Clicking it will bring you to the Qmap Center, where learning maps can be obtained.

Learning maps are specially designed maps which have been created to illustrate network knowledge points. They are ideal for advancing your network knowledge or preparing for Cisco certification.



Viewing Qmaps

View and Navigate Qmaps:

To enlarge or reduce the map, you can use the zoom in and zoom out, either using the scroll feature of your mouse or the icons in the toolbar at the top of the window.



Alternatively, you can adjust the scrolling rate in the scroll bar.



View Multiple Qmaps:

Multiple Qmaps can be viewed simultaneously, just like viewing multiple tabs in a browser. Tabs can be detached and rearranged to new locations, either in the same or in a separate window

Open and Edit Qmaps in Workstation:

The “Edit with NetBrain” option will allow you to open and edit the current Qmap in the NetBrain Workstation. If the software is not installed, the NetBrain software download page will be opened instead.



What can you do with Qmap Reader?

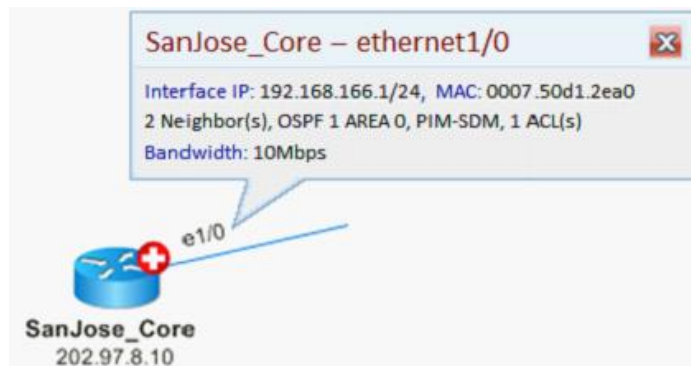
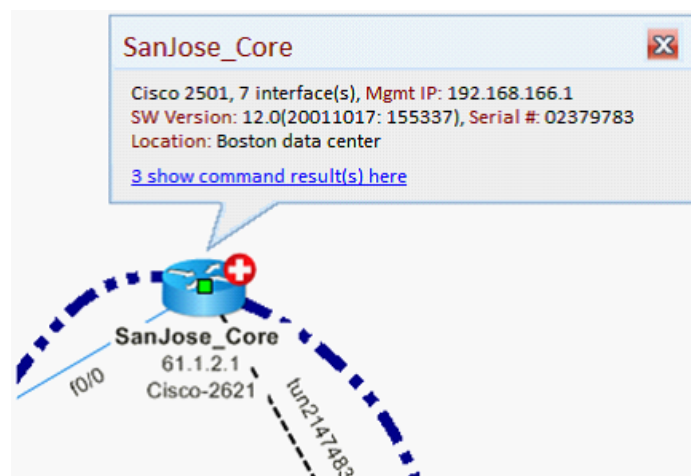
Map File Elements

Map Elements refer to all the data and object inside Qmaps. We will delve into the details on all map elements in the following section. An import note here is that, in the current version, **you cannot make any modifications to the existing Qmaps** with Qmap reader. You can adjust the layout of a Qmap view temporarily. But all the changes will not be saved after you close the Qmap.

Map Objects:

Map objects are fundamental elements that construct Qmaps. These objects can be rearranged temporarily.

Device and Interface Tips: If you have saved device properties and/or interface properties on the Qmap within NetBrain Workstation, you can mouse over that device or interface and the detail info will be shown in a pop-up window. (Shown below)



What can you do with Qmap Reader?

Device Configurations within Qmaps:

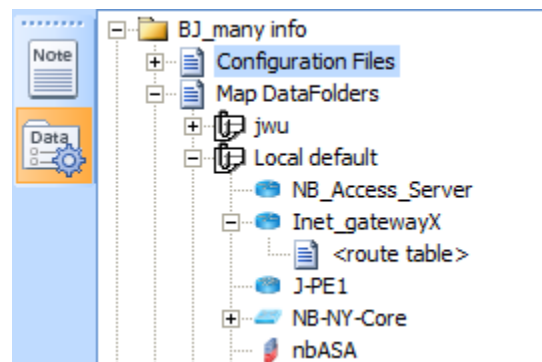
You can double click on a device to open the Device Data Browser. The configuration file for the device will be displayed within this window.

Note for NetBrain Workstation users: Map configuration files for devices are automatically saved when you save Qmaps. The configuration inside in the ::Current Baseline source will be copied to the Qmap file.

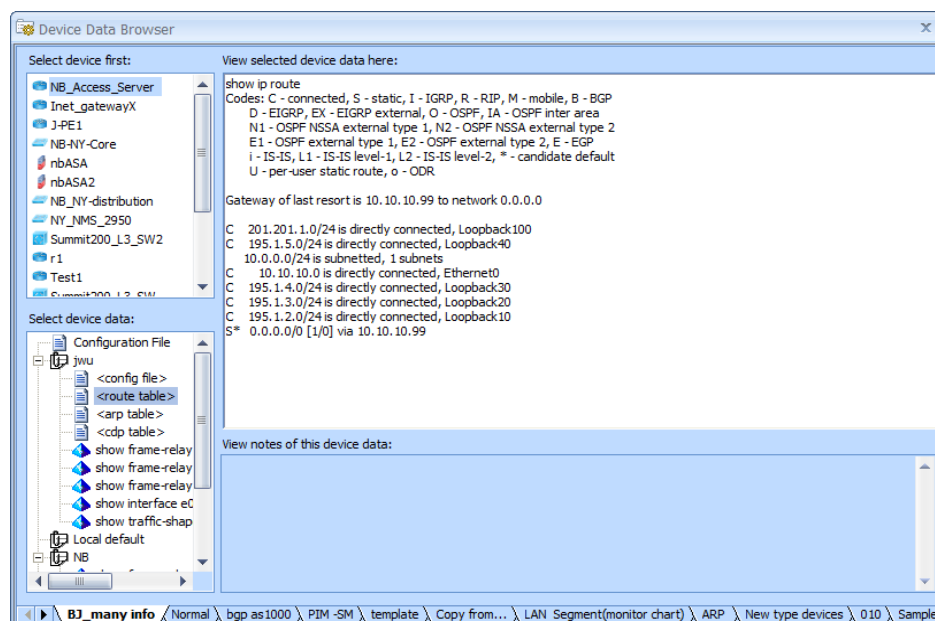
Map Data folders:

You can view the show command results saved in the Map Datafolder.

Click the Map Data icon in the map bar to view all the map data folders attached to the Qmap.




Double click a device to view the show command output.

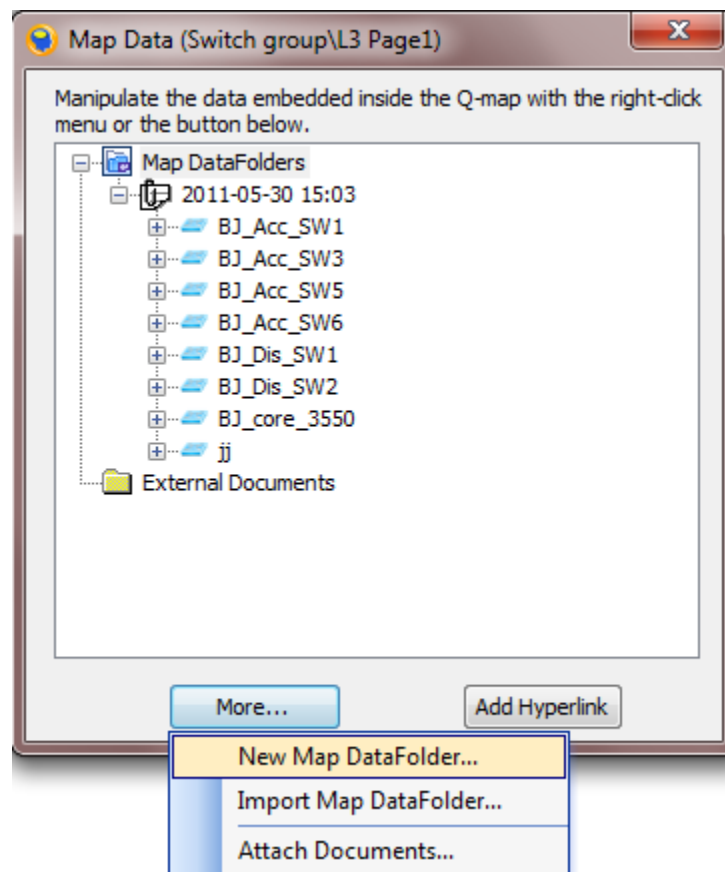


What can you do with Qmap Reader?

Note for NetBrain Workstation users: Map Data Folders are used to store data retrieved from the live network. The Map Data Folder works similarly to a normal Data Folder, but is associated specifically to a Qmap. There can be more than one DataFolder within a Qmap.

How to create New Map Datafolders:

Select a Qmap and click the  (**Map Data**) button in the map floating menu. The **Map Data** window opens. You can click the **More** button and select the **New Map Datafolder** to create new Map Data folders.

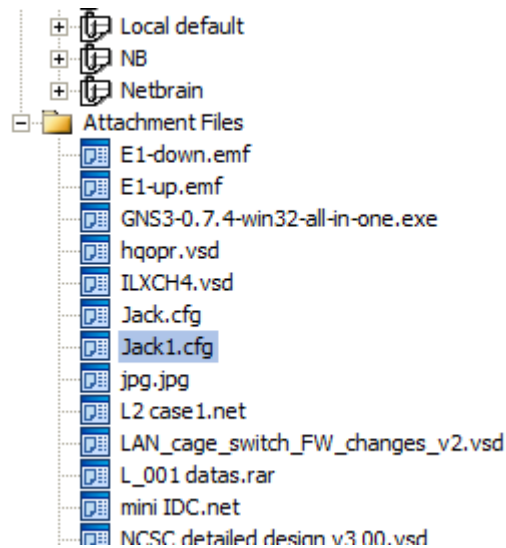



To save the show command data inside the data folder, you can either run retrieve live data, selecting the map data folder, or you can run a show command benchmark. For more details, refer to the NetBrain OE/CE manual.

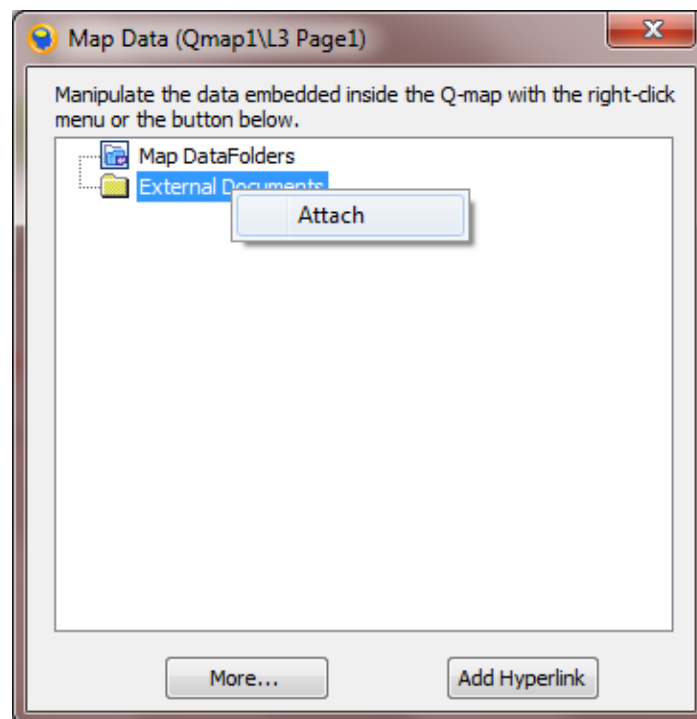
What can you do with Qmap Reader?

Map Attachments:

Map attachments are external files added to Qmaps. You can add various resources into Qmaps, such as documents, zip files, .vsd files even .exe files. These can help you link related resources to Qmaps much easier.



Note for NetBrain Workstation users - How to add attachments: Select a Qmap and click the  (**Map Data**) button in the map floating menu. The **Map Data** window opens. You can right click the External Documents node and select the Attach option to link the external documents to the Qmap.

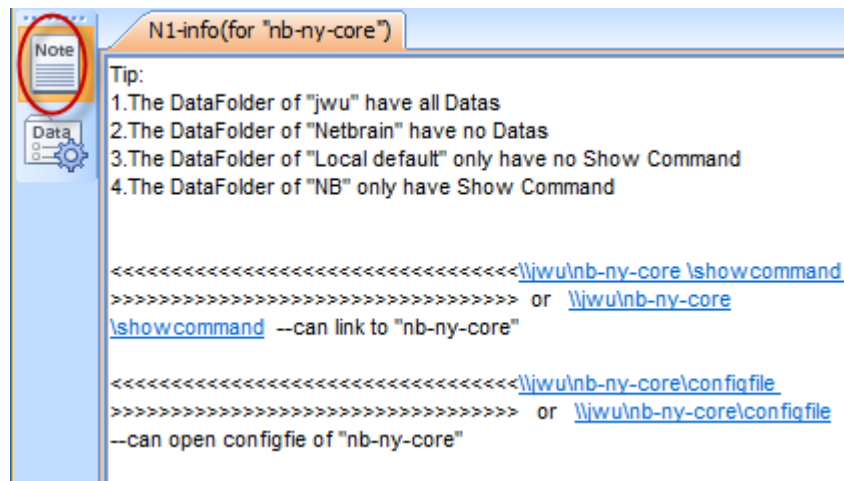



What can you do with Qmap Reader?

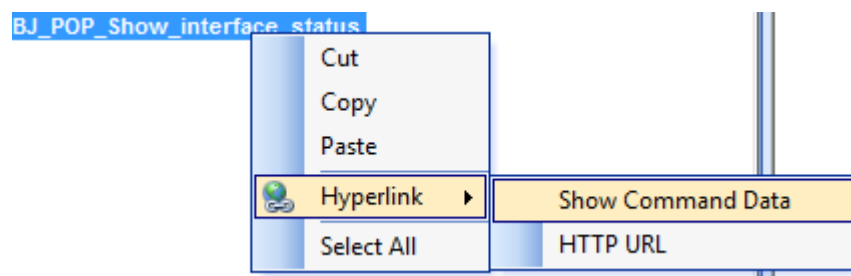
Map Notes:

You can view map notes added to the Qmap.

Click the Map Note icon in the map bar to view all the map data folders attached to the Qmap. Apart from viewing the standard text inside the map note, you can click a hyperlink to open the show command output.



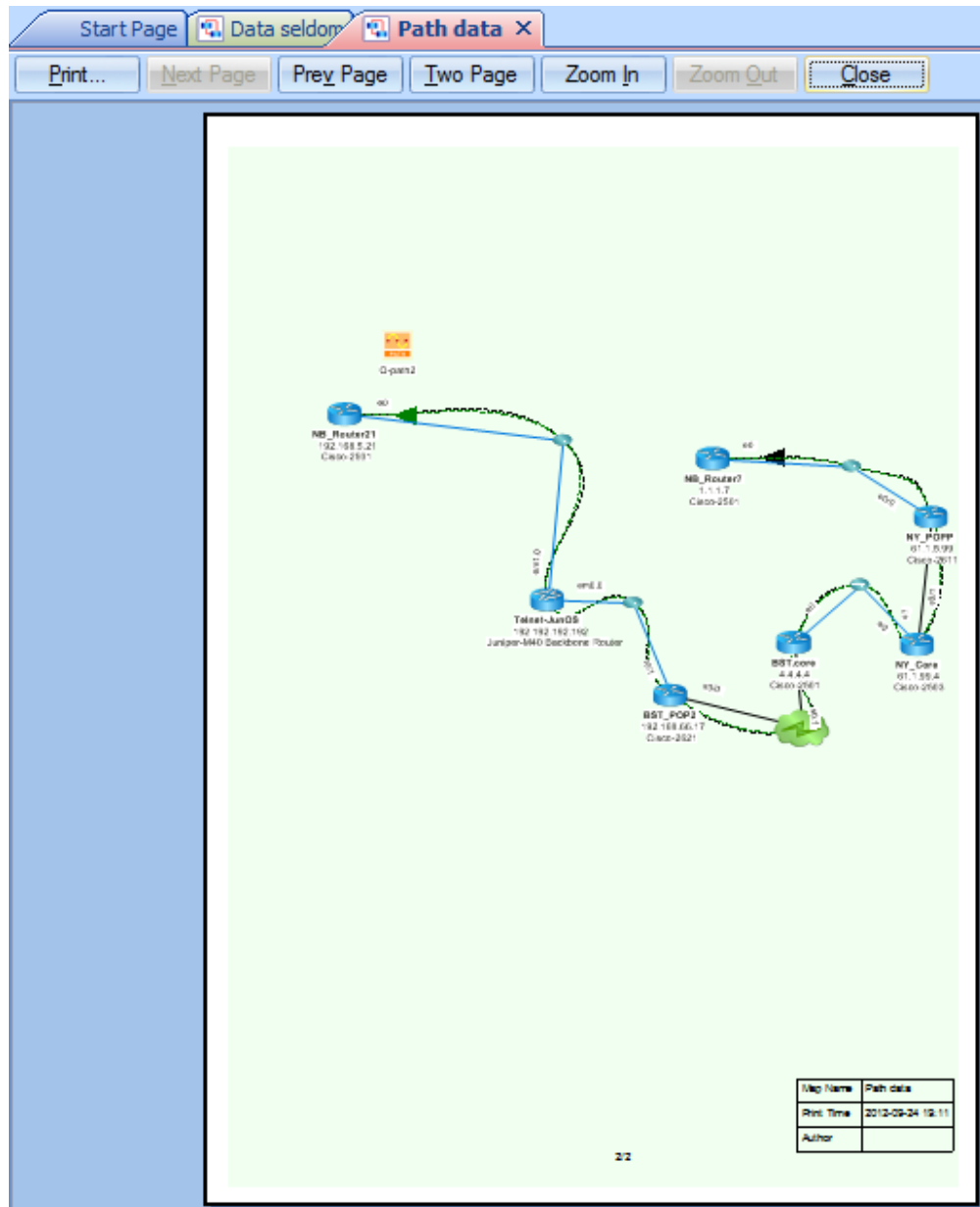
Note for NetBrain Workstation users – How to link show command output: Select a Qmap and click the  (**Map Note**) button in the map floating menu to open the **Map Note** pane. To create a hyperlink for text, right click any selected text and click **Hyperlink > Show Command Data/HTTP URL**.




Printing Qmaps

To Preview a Qmap:

To preview a Qmap, click **File > Print Preview** to open the preview page.

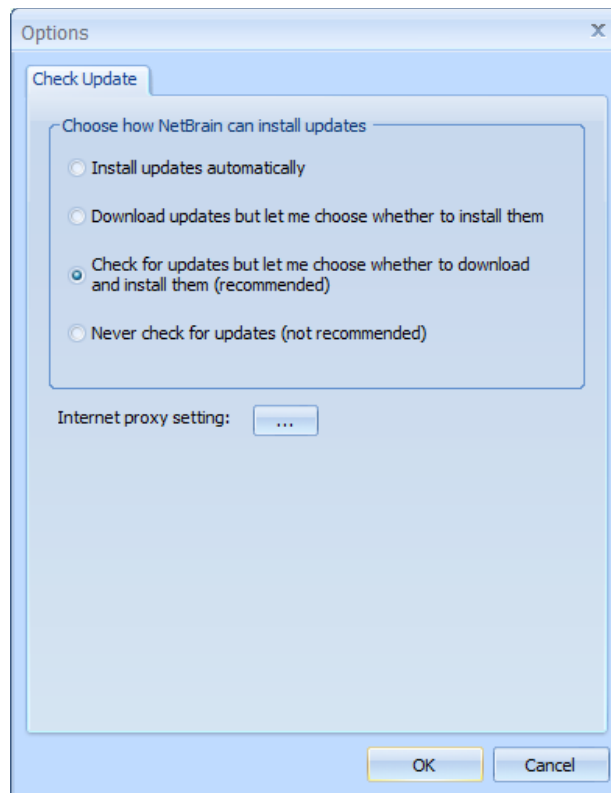


To Print a Qmap:

Click the  print icon in the toolbar to print the Qmap. To print a large map, you can zoom into the map as desired and then print the map.

Update Qmap Reader

To select the method of updating the Qmap reader, navigate to the tool bar and click **File > Option**. This will open the check update window opens.



Install updates automatically: the system downloads and installs the new version automatically without notification.

Download updates but let me choose whether to install them: the system performs download operation automatically. You can decide whether to install the new version.

Check for updates but let me choose whether to download and install them (recommended): the system checks the update and notifies you if a new version is available. You can decide whether to download and install the new version. We recommend you to select this option.

Never check for updates (not recommended): the system will not check the update.

Note: If your computer uses proxy to connect to the Internet, please click on the "Internet Proxy Setting" button to input the proxy info