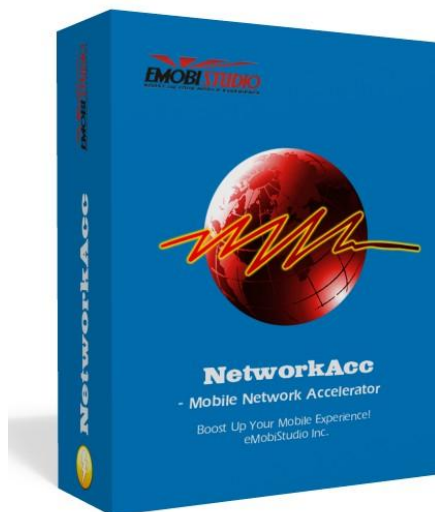


NetworkAcc User Manual

MOBILE NETWORK ACCELERATOR



eMobiStudio Inc
Home: <http://www.emobistudio.com>
Mobile: <http://wap.emobistudio.com>
Email: support@emobistudio.com

Table of Content

Introduction	3
Main Features	3
Getting Started.....	4
Installing NetworkAcc.....	4
With Nokia PC Suite.....	4
Running NetworkAcc.....	5
Main Window.....	5
Select Operating System	6
Select Country & Carrier.....	6
Select Connection Type.....	7
Shift Accelerator Gears.....	8
Start to Accelerate.....	8
Hide & Running NetworkAcc in Background.....	9
Profile Management.....	10
Settings.....	12
Check for new version.....	15

Introduction

NetworkAcc is a powerful mobile network accelerator specially designed for Smartphone and BlackBerries. It accelerates all your mobile network based activities, which include browsing, downloading, uploading, streaming, online gaming, sending and receiving email, etc. Optimization technology is applied to fine-tune several key network parameters to prevent data fragmentation and to improve data throughput. All the above techniques translate into a speedy internet/network connection: faster browsing, faster downloading, faster email, and faster online gaming.

By default, most mobile network connections for mobile system are not configured to transfer data at their maximum or their most efficient speed. Our software will analyze and optimize your mobile browser and network connection for speedy downloads, faster web-content loading, and an overall improvement on web surfing speed.

NetworkAcc allows you to fine-tune your mobile network settings to achieve optimal network performance out of your current hardware. All you need to do is providing some basic information about your network. NetworkAcc will use that information to analyze your mobile system and then adjust your network settings accordingly. NetworkAcc safely modifies your mobile network settings without forcing you to understand a bunch of network jargons.

By using NetworkAcc, to accelerate you mobile phone is one click away!

Main Features

Here are just some of the great features of NetworkAcc:

- **All-powerful network accelerator:** Optimize and speed up your mobile network related activities, including web browsing, downloading, uploading, streaming, online gaming, sending and receiving email, etc.
- **Absolutely hardware free:** 100% software solution, no additional hardware needed!
- **All-in-one solution:** Well tuned up for different types of mobile network (GPRS, EDGE, 3G, HSDPA and WIFI, etc.) and various carriers (AT&T, Alltel, O2, Orange, Sprint, T-Mobile, Telefonica, Verizon, and Vodafone, etc.)
- **Easy as winking:** One click per day to speed up your mobile network performance without forcing you to understand a bunch of network jargon.
- **The ultimate in convenience:** Running in the background, automatically analyze and optimize your mobile network on-the-go.
- **Fully user-driven application:** Multiple accelerator gears (5 gears available) at your choice to accelerate mobile network on demand, advanced 'Settings' support (Request compressed data from server, Authorize NetworkAcc to enable/disable system to update time stamps, Suspend NetworkAcc when no connections are found, etc.) for users to take full control of NetworkAcc's boosting functions.

Getting Started

Installing NetworkAcc

There are 2 easy ways to install NetworkAcc. If you have received the NetworkAcc software package, you can install it with the Nokia PC Suite, which can be downloaded at <http://europe.nokia.com/A4144903>. The instructions regarding the installing procedures can be found in the Nokia PC Suite's User Guide. This will require a PC and an USB data cable (or Bluetooth) between the PC and your Nokia device.

Another alternative is to directly download "NetworkAcc.jar" onto your mobile device and click it to start the installation process.

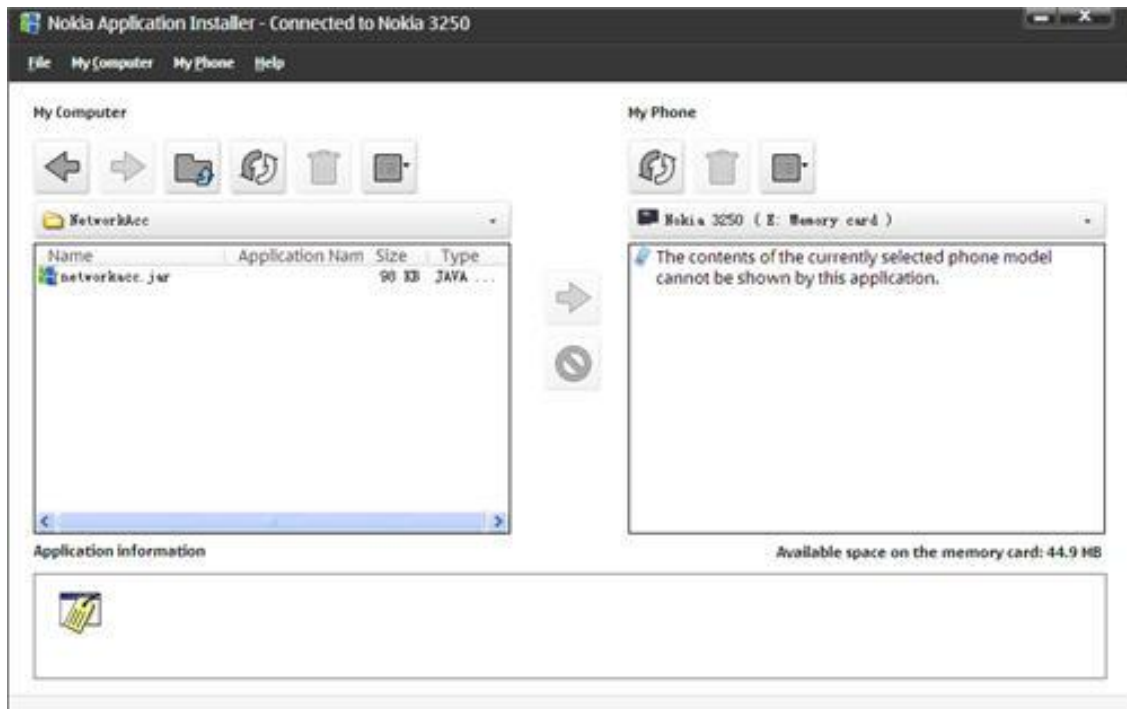
With Nokia PC Suite


The procedures to install NetworkAcc with the Nokia PC Suite are:

- Start the Nokia PC Suite Desktop Manager.
- Connect your Nokia device to your PC or laptop. This is usually done by connecting the USB cable or through Bluetooth (if supported.)
- Run the Nokia PC Suite.



- Select "Install application".



- Select "NetworkAcc.jar" and click "  " to install NetworkAcc.

Running NetworkAcc

Select the NetworkAcc icon in the main menu to start NetworkAcc.

Main Window

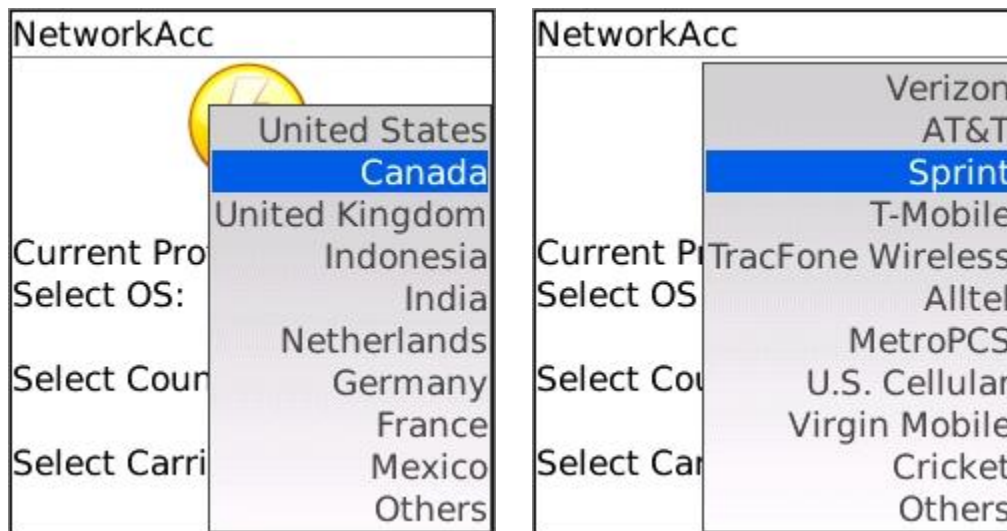


Select Operating System



NetworkAcc supports the following Symbian operating system: Symbian OS v6, Symbian OS v7, Symbian OS v8 (2nd Ed), Symbian OS v9 (3rd Ed), Symbian OS v9 (5th Ed). If your smartphone OS is not among the list, please select "Others..".

Select Country & Carrier



NetworkAcc supports the following mobile network carriers: AT&T, Alltel, O2, Orange, Sprint, T-Mobile, Telefonica, Verizon, and Vodafone. If your mobile network carrier is not among the list, please select "Others".

Country	Supported Carriers
United States	Verizon, AT&T, Sprint, T-Mobile , TracFone Wireless, Alltel, MetroPCS, U.S. Cellular, Virgin Mobile , Cricket
Canada	Rogers, Bell, Telus, Sasktel, MTS, Airtel, Fido, Koodo Mobile , PC Mobile , Virgin Mobile
United Kingdom	O2, Vodafone, Orange, T-Mobile , 3, UK01, Virgin Mobile , Easy Mobile , Tesco Mobile , Blyk
Indonesia	Telkomsel, Indosat, Excelcomindo, Telkom, Bakrie Telecom, 3, Natrindo, Mobile -8, Smart Telecom, Sampoerna Telekom
India	Aircel, Bharti Airtel, Loop Mobile , Vodafone, Idea Cellular, Reliance, Spice Communications, Tata Indicom, BSTN, MTNL
Netherlands	KPN, T-Mobile , Vodafone, LycaMobile , Ortel Mobile , TELE2 Mobiel, Lebara Mobile , Simyo, Debitel, Chippie
Germany	T-Mobil, Vodafone, E-Plus, O2, Ortel Mobile , TELE2 Mobile , Simyo
France	Orange, SFR, Bouygues Telecom, Virgin Mobile , NRJ Mobile , TF1 MOBILE , TELE2 MOBILE , SIMPLICIME, A-MOBILE , VIRGIN MOBILE
Mexico	Telcel, Movistar, Iusacell, NEXTEL, Unefon

Select Connection Type

NetworkAcc

Current Profile: Unsaved

Select OS:

Symbian OS v7

Select Country:

United States

Select Carrier:

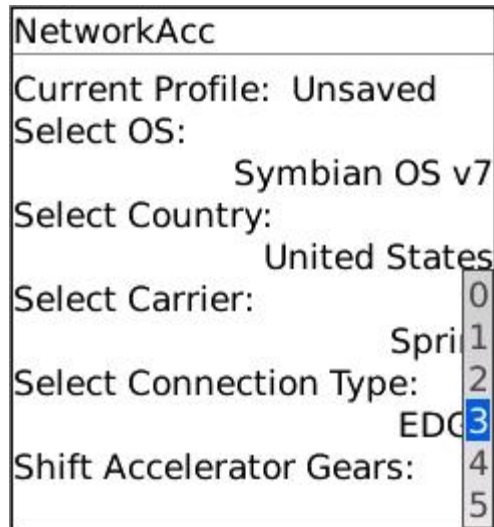
GPRS
EDGE
3G
HSDPA
WIFI
Others

Select Connection Ty

Shift Accelerator Gea

NetworkAcc supports the following types of mobile network: GPRS, EDGE, 3G, HSDPA and WIFI. If your smartphone OS is not among the list, please select "Others..".

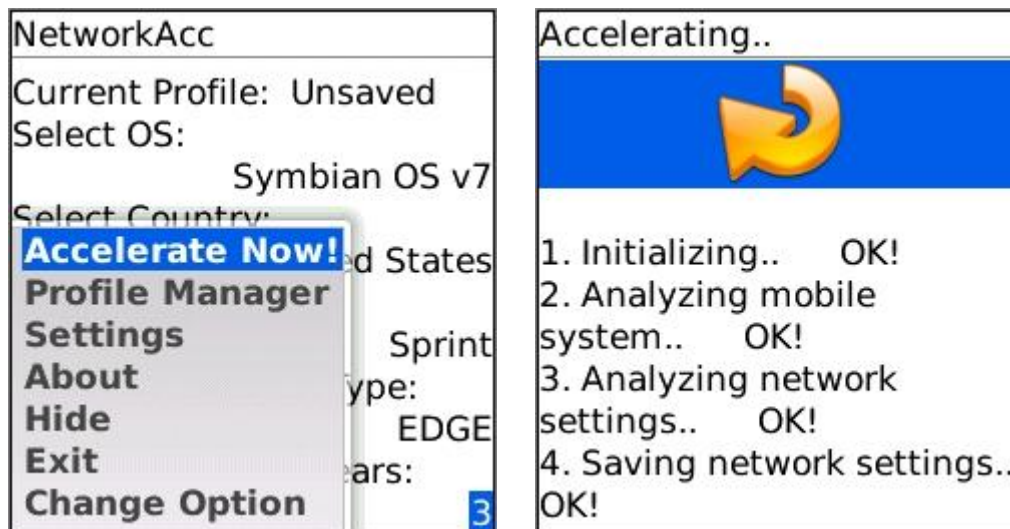
Shift Accelerator Gears

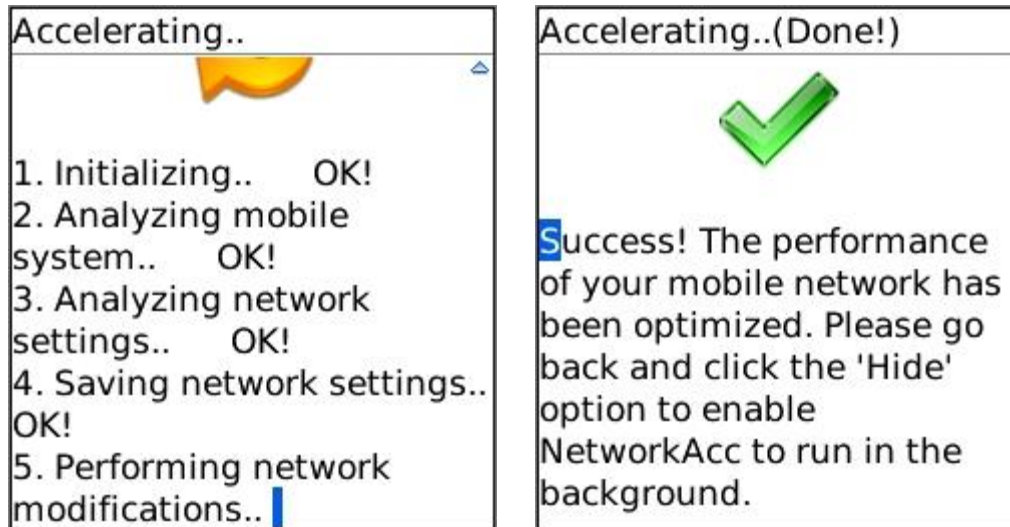


NetworkAcc provides multiple accelerator gears to accelerate your mobile network on demand. Accelerator gears could be shifted from 1 to 5, the higher the gear is, the faster the network speed will be. However, it will take more mobile resources (i.e. system memory and CPU) and cause heavier workload. The default value is 2.

Start to Accelerate

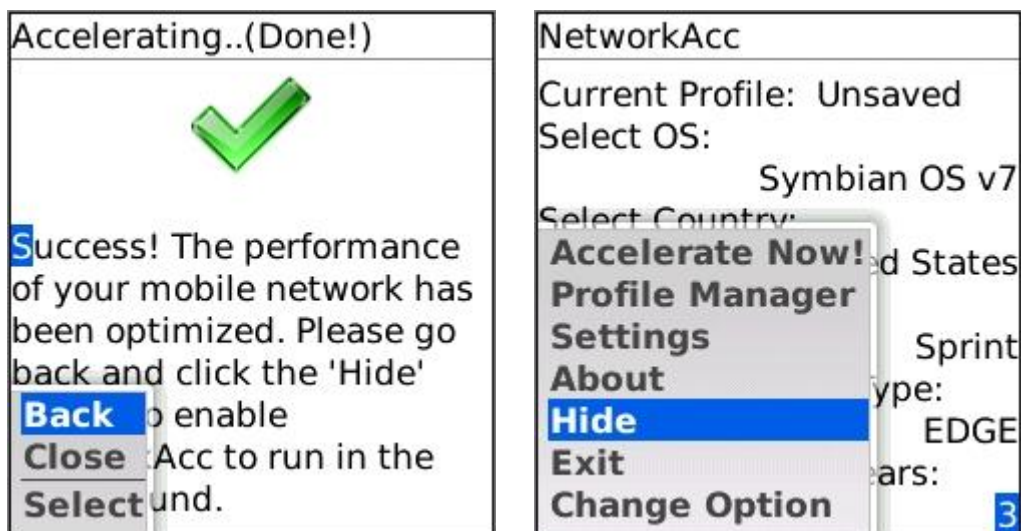
By clicking "Accelerate" option in the main menu, you can launch the accelerating operation right away. NetworkAcc will intelligently analyze your mobile system and network settings, and then perform network modifications to optimize the performance of your mobile network.





Hide & Running NetworkAcc in Background

NetworkAcc can be hidden to run in the background. Go back to the main menu, click "hide" option, NetworkAcc will hide and auto-accelerate and optimize your smartphone in the background.

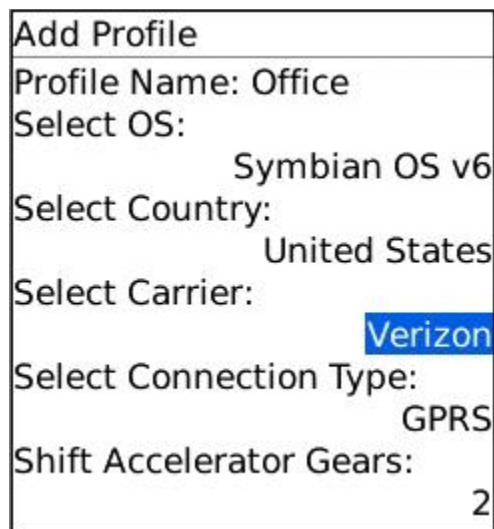


Profile Management

You can save different network profiles in NetworkAcc, i.e. profiles of your office's WiFi network and home's GPRS network. With NetworkAcc's profile manager, you can conveniently switch between different profiles, and NetworkAcc will automatically optimize your mobile phone's network performance based on different network settings in each profile.



By selecting "Add Profile", you will be led to create a new setting profile:



Adjust your profile setting according to your OS, Server Type, Country, Connection Type, Carrier and gear. Then click "Load Profile":



After a successful loading, NetworkAcc will activate the latest profile and start to accelerate. If you need to delete or readjust a profile setting, click "Delete Profile":



Settings

NetworkAcc provides five options for users to adjust & modify NetworkAcc's activities:

1. Times to retry boost

This option is to set the retry times when errors or interruptions occur in NetworkAcc's boost process. The default setting is "5".

Settings	
1. Times to retry boost	3
	5
(Set the retry times when errors/interruptions occur in NetworkAcc's boost process)	10
2. Request compressed data	
	Yes
(Enable/disable NetworkAcc to request compressed data	

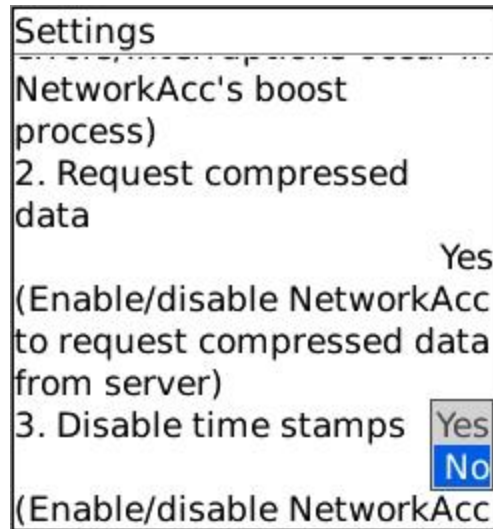
2. Request compressed data

This option is to enable or disable NetworkAcc to request compressed data from server. By enabling this feature, NetworkAcc will request compressed data from server-side and forward it to the phone where the data is decompressed. The default setting is "Yes".

Settings	
1. Times to retry boost	5
(Set the retry times when errors/interruptions occur in NetworkAcc's boost process)	
2. Request compressed data	
	Yes
(Enable/disable NetworkAcc to request compressed data	No

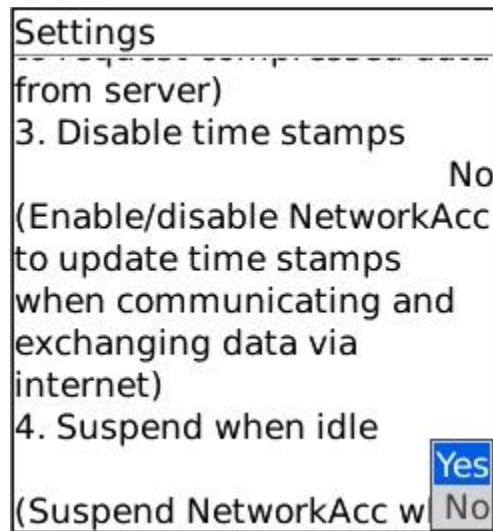
3. Disable time stamps

This option authorizes NetworkAcc to enable/disable system to update time stamps when applications on your smartphone are communicating and exchanging data via internet. If you are using applications which access to internet frequently, you should set this setting to "NO" so as to stabilize your network connection. The default setting is "No".



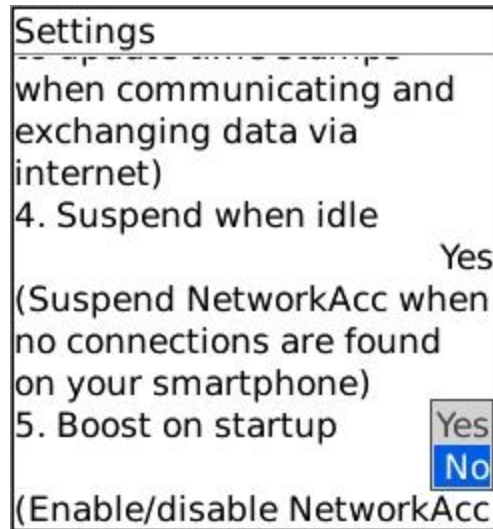
4. Suspend when idle

This option enables or disables NetworkAcc to automatically suspend its boost process when no connections are found on your smartphone. The default setting is "Yes".

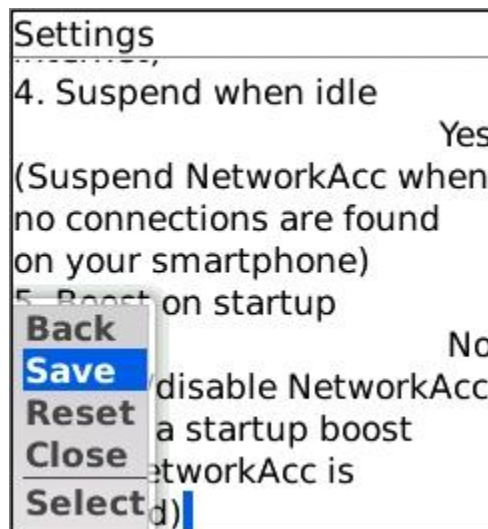


5. Boost on startup

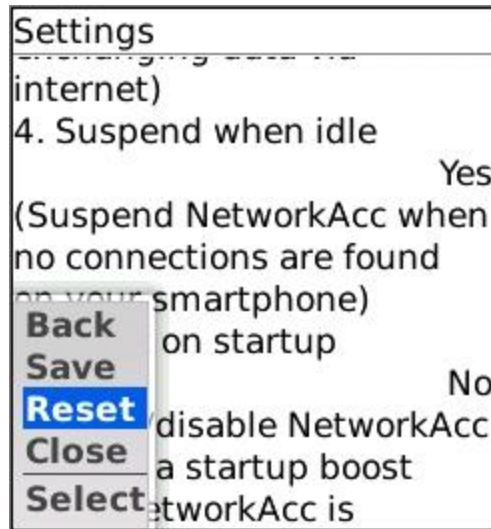
By setting this item, you can choose to enable or disable NetworkAcc to issue a startup boost when you start NetworkAcc on your smartphone. The default setting is "No".



Click "Save" to save all the adjustments made and NetworkAcc will optimize your network based on your settings.



If you want to change to default settings, click "Reset":



Check for Update

To check for new version of NetworkAcc, firstly you should enter into the "About" Page. By clicking the sub-menu, you can see the "Check for Update" option. Just click to select the option, you will be directly led to our website. There you can check up whether your NetworkAcc is up to date. You can also choose to upgrade your NetworkAcc by downloading new NetworkAcc software package to your PC.

