



JpegWatch for Palm version 1.4.5

The Most Featured JPEG Viewer for Palm Devices

Copyright (c) 2001 by HandWatch, Inc.

Manual and Application by Mark Chao-Kuang Yang



[Introduction](#)

[JpegWatch Application](#)

[FileList Panel](#)

[Load Panel](#)

[Image Panel](#)

[Brightness Panel](#)

[QuickKey List](#)

[Sony Hi-Res \(320x320\) Support](#)

[Sony Jog-Dial](#)

[Sony Audio Remote Control \(RMC\)](#)

[Sony CLIE Screen Rotation](#)

[Free Review and Evaluation Copy](#)

[Contact Information](#)

Introduction

Most of the latest Palm devices, such as Palm m500 series, m125, Visor Edge (with Compact Flash Spring Board module) and Sony CLIE, all have memory card capability. One of many convenient features memory cards bring is to store photo images taken by digital cameras. Most digital cameras store photo images in JPEG format.

Viewing JPEG images requires complex mathematical computation and memory. Due to lack of computation power and small memory footprint, Palm users have always been unable to view photo images on their Palm devices quickly and easily.

JpegWatch uses advanced algorithms to speed up JPEG decoding. The Palm's rule of thumb has always been focusing on what is needed. Thus, **JpegWatch** is designed in a way that only visible image pixels are decoded. Doing so enhances the decoding speed greatly.

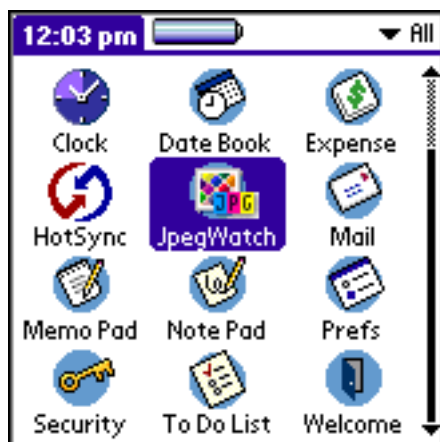
Not only the decoding speed is greatly enhanced, but also the way users can interact with images. Unlike other image viewer software, which limits images to be viewed in certain sizes and locks up the entire Palm device when decoding, **JpegWatch** allows users to interact with the image in the following ways:

Zoom Levels	Change image zoom levels. Even while the image is being displayed.
Image Panning	Move the image around to the part desired. Even while the image is being displayed.
EXIF*	Displaying EXIF information, such as Resolution, Exposure time, etc.
Exif Thumbnail	View thumbnails in EXIF if available, making quick browsing possible.
Annotation	Each image can be annotated. The annotation is directly saved as text (.txt) file.
Brightness Control	Image brightness can be adjusted. Viewing dark photos will not be a problem anymore.
Slide Show	Shows each image in the folder by self-running. Making viewing multiple photos a leisure.
m500/m125 support	JpegWatch uses Error Diffusion to enhance image viewing on black and white Palm devices.
Sony Jog-Dial Support	One hand image browsing using Sony Jog-Dial.
Full Sony Hi-Res (320x320) Support	Support 320x320 screen resolution on Sony CLIE devices.
No UI Blocking	Unlike many other image viewers, JpegWatch follows Palm's principle of programming strictly. User can stop a lengthy operation and jump to other Palm applications, such as HotSync, at any time.

***Exif**: Exchangeable Image File Format. The format is used by most digital cameras.

There are many more exciting features can be found in **JpegWatch** waiting to be explored.

JpegWatch Application

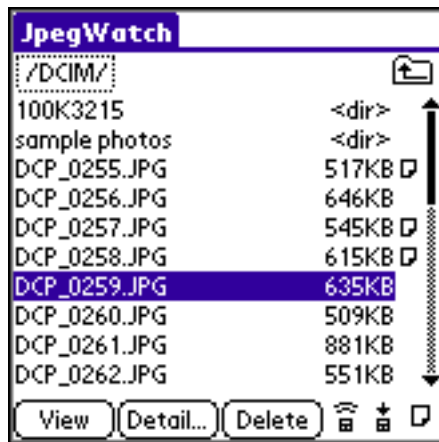


Simply tap on **JpegWatch** icon to use the application. This will bring up the **File List** panel.

File List Panel

File List Panel allows users to manage image files and directories on memory card. There are two types of file items. One is JPEG files (with file extension .jpg or .jpeg) files and the other is directory folders (with <dir> attribute). Tap on the directory file item would change the current folder to that directory. Tap on the

JPEG files would highlight the file and make the file available for operations.



Button Name
View

Functionality

View Image

Detail

Display the Exif information (Exposure Time, Date, etc.)

Delete

Deletes the file.



IR Beam File

User InfraRed to beam the currently selected file.



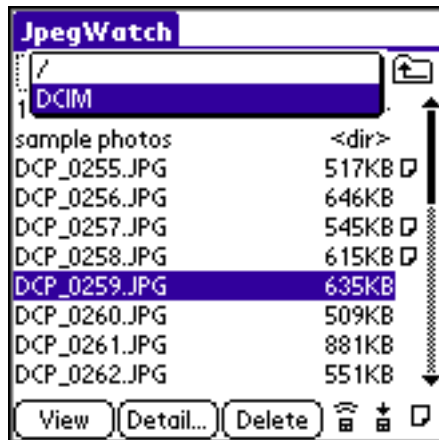
IR Receive File

Use InfraRed to receive incoming file. The file will be stored in the current directory.



Note

Make annotation of the selected image file.



Directory Control

Functionality

If the current directory is not at root directory, tap on it would show up directory menu.

Directory Path Menu



Up Directory Button

If the current directory is not at root directory, tap on it would bring the directory level up by one level.

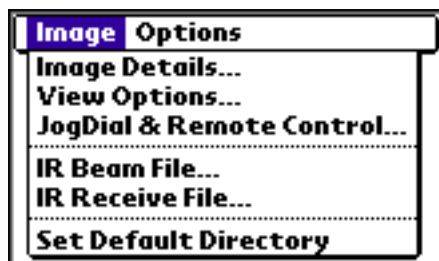


Image Menu Name
Image Details

Functionality

Shows EXIF information, such as Exposure and Date/Time of the image.

View Options

Shows the **View Options Dialog**.

JogDial & Remote Control

Shows options for **Sony Jog-Dial** and **Audio Remote Control**. Only available for Sony CLIE with MP3 audio capability.

IR Beam File

User InfraRed to beam the currently selected file.

IR Receive File

Use InfraRed to receive incoming file. The file will be stored in the current directory.

Set Default Directory

Sets the default directory. **JpegWatch** would try to open the default directory first when the memory card is inserted. If the default directory does not exist, **JpegWatch** would open the root directory.



Options Menu Name
About JpegWatch...

Functionality

Shows **JpegWatch** About Dialog.

Load Panel

Load Panel shows up when an image is being processed, such as right after user selects **View Button** in [File List Panel](#). It shows the name and size of the image file being processed.



Cancel Button: Return to File List Panel
Up/Down Keys: Previous/Next Image.

Image Panel

Image Panel is where all the magics happen. The image is displayed and decoded and the same time. **JpegWatch** uses algorithm that only visible pixels (image dots) are decoded. The result is the fastest decoding speed ever seen on Palm devices. While decoding, the image can be set to the needed zoom level and moved around to the desired area. There is no need to wait for the decoding to completely finish.

Tip: Because only visible pixels are being calculated, decoding is much faster if visible area is smaller. There fore, decoding is faster if the scale is larger (i.e. 1/1 scale is faster than 1/4 scale).



Original image



Move the image



Image being decoded at new position



Finished decoding



1/8 Scale

Image Panel shows the image. The image was processed in the **Load Panel** and then displayed in this panel. There are quite some options for viewing image. The most obvious ones are the buttons on the right-hand side of the panel. Tapping on the buttons would show the corresponding results.

Double-Tapping on the image zooms into the next available scale level. For instance, if the image is currently at 1/8 scale, double-tapping would bring the image into 1/4 scale and centered around the tapping point on the image.



1/4 Scale



1/2 Scale



1/1 Scale



2/1 Scale

Button Icon	Button Name	Functionality
	Scale Buttons:	Scale to corresponding sizes.
	Detail Button:	Shows Exif information.
	Annotation Button:	Annotates the image.
	Return Button:	Return to File List Panel .

Menus:

Image	Options
Brightness...	
Scale 2	✓0
Scale 1	✓1
Scale 1/2	✓2
Scale 1/4	✓4
Scale 1/8	✓8
View Thumbnail	
View Original	
Dither (4-bit)	✓D
No Dither(4-bit)	✓N
IR Beam Image...	✓B

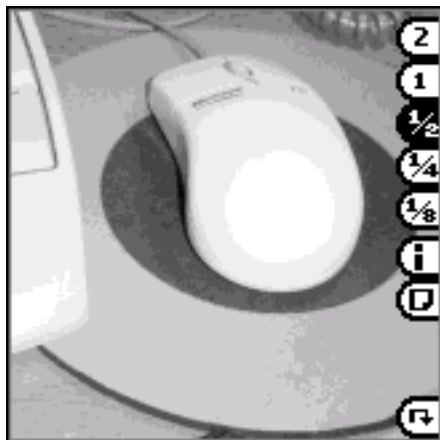
Image Menu	Functionality
Brightness	Shows Brightness Panel .
Scale Menus	Sets the image at corresponding scales
View Thumbnail/Original	Uses Exif Thumbnail if available. If the thumbnail isn't available, the original image is displayed
Dither (4-bit)	Use Error Diffusion to enhance 4-bit (16 level) gray scale images. Only available under 4-bit screen mode.
No Dither (4-bit)	Disable Error Diffusion. Only available under 4-bit screen mode.
IR Beam Image	Use InfraRed to beam the current image.



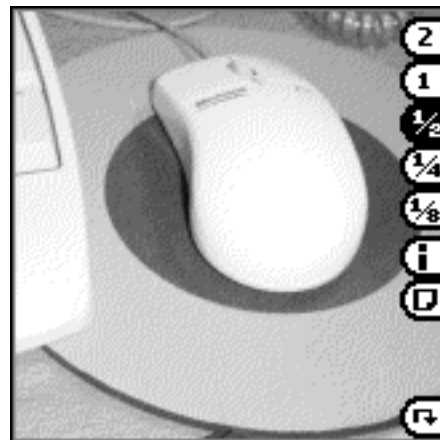
Options Menu
Help Menu
Show/Hide Buttons
Image Detail
View Options
File List

Functionality
Shows help menu with quick-key list.
Shows/Hides buttons.
Shows **Detail Panel** (Exif information).
Shows **View Option Panel**.
Return to **File List Panel**.

Dithering Option is only available in black and white devices such as Palm m500 and m125. Such devices can only display 16 levels of gray scale. When viewing photo images, it is common the "banding" effect would occur. Enabling dithering can remove the banding effect and make the image appears a lot smoother. However, dithering is needed when displaying line art images, such as stock charts.



Without Dithering

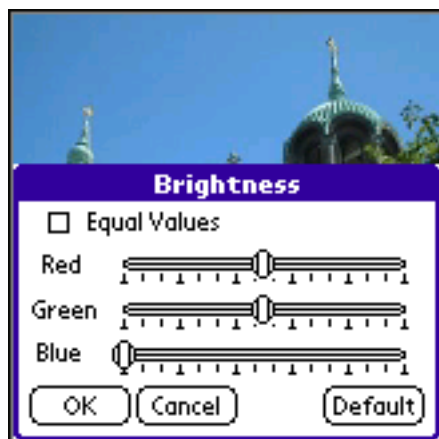


With Dithering

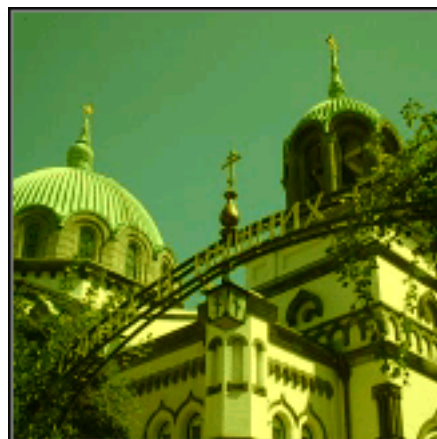
Brightness Panel:

Many digital cameras are specially susceptible to dark environments. If photos are shot under low-light situation, such as indoors, the image would come out much darker. Making images hard to see. **Brightness Panel** allows to adjust the image brightness without modifying the image itself. Making reverting the image brightness possible.

Not only brightness adjustment helps viewing images, but it also helps to view images better. Some LCD screen on particular Palm devices appear to have incorrect color. For example, **Sony CLIE T600** users may find Red color too weak. Just make the red brightness stronger can help improving the image quality.



->



Panels:

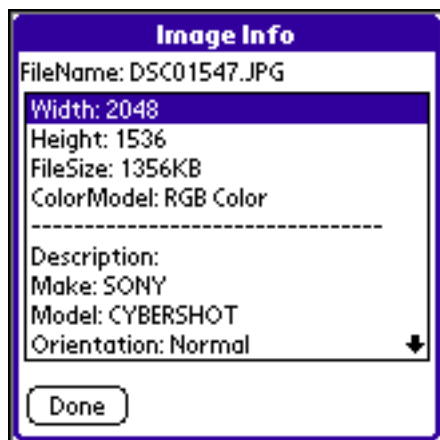
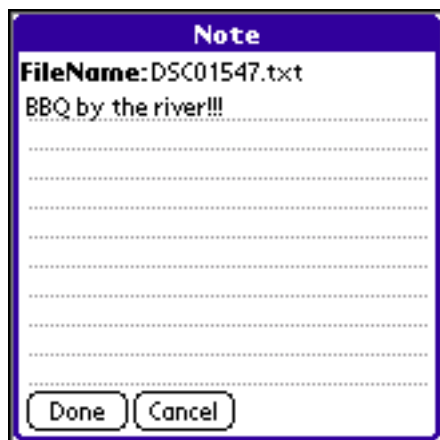


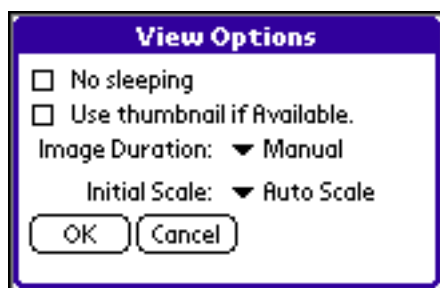
Image Information Panel

Image Information Panel shows the Exif information contained in the image file.



Annotation (Note) Panel

Note Panel allows users to create/edit the note (annotation) text.



View Options Panel

Item Name
No Sleeping
Thumbnail
Image Duration
Initial Scale

Funcationality
Disable Auto Power-off.
Use Exif thumbnail image if available.
Sets the duration time for each image.
Initial scale when displaying image.

QuickKey List

In [Image Panel](#), quick keys are available to perform operations quickly and easily. The same information can be found in Help Menu. The list is provided here for quick reference.

Key	Function
'H'	Help Menu
'0'	Scale 2/1
'1'	Scale 1/1
'2'	Scale 1/2
'4'	Scale 1/4
'8'	Scale 1/8
'A'	Note (Annotation)
'I'	Image Detail (Exif Information) Panel
'B'	Brightness Panel
'V'	View Options Panel
'N'	No Dithering (only in 4-bit screen)
'D'	Dithering (only in 4-bit screen)
'M'	Show/Hide buttons
'T'	Show Thumbnail/Original Image
':'	Return to File List Panel

Sony CLIÉ Hi-Resolution (320x320) Support

Sony CLIÉ Hi-Resolution screen is fully supported. Under PalmOS 3.5 (CLIÉ 700c/710c), the images are shown in 8-bit gray scale (256 gray levels) as PalmOS 3.5 does not support 16-bit color. Please upgrade to PalmOS 4.0 and above to support high color screen mode.





320x320 @ 1/4 Scale

Sony Jog-Dial Support

Sony Jog-Dial is fully supported in **JpegWatch** to allow one-hand image browsing. Each panel has different supports, and is listed as following:

File Panel

- | | |
|-----------------|---|
| Roll CW | Selects previous file item. |
| Roll CCW | Selects next file item. |
| Push | Opens the file item, or opens the directory. |
| Back | Back up one directory. If the current directory is at root, quit the application. |

Load Panel

- | | |
|-----------------|------------------------------|
| Roll CW | Skip to previous image file. |
| Roll CCW | Skip to next image file. |
| Back | Return to File List Panel |

Image Panel

- | | |
|----------------|---|
| Push | Show/Hide buttons |
| Back | Return to File List Panel |
| Roll CW | Zoom-in to next scale level when buttons are visible.
Jump to previous image file when buttons are hiding. |
| Row CCW | Zoom-out to next scale level when buttons are visible.
Jump to next image file when buttons are hiding. |

CW: Clock-wise

CCW:Counter Clock-wise

Sony Audio Remote Control(RMC)

For Sony CLIE 700 series, or any CLIE devices that have MP3 adapter, an Audio Remote Control (RMC) is provided. Users can use RMC to browse images. While Jog-Dial is good for one-hand browsing, RMC is perfect for doing presentation.

File Panel

- | | |
|-------------|---|
| Play | Opens the file item, or opens the directory. |
| Stop | Back up one directory. If the current directory is at root, quit the application. |

Fast Forward	Selects next file item.
Fast Reverse	Skip to previous image file.

Load Panel

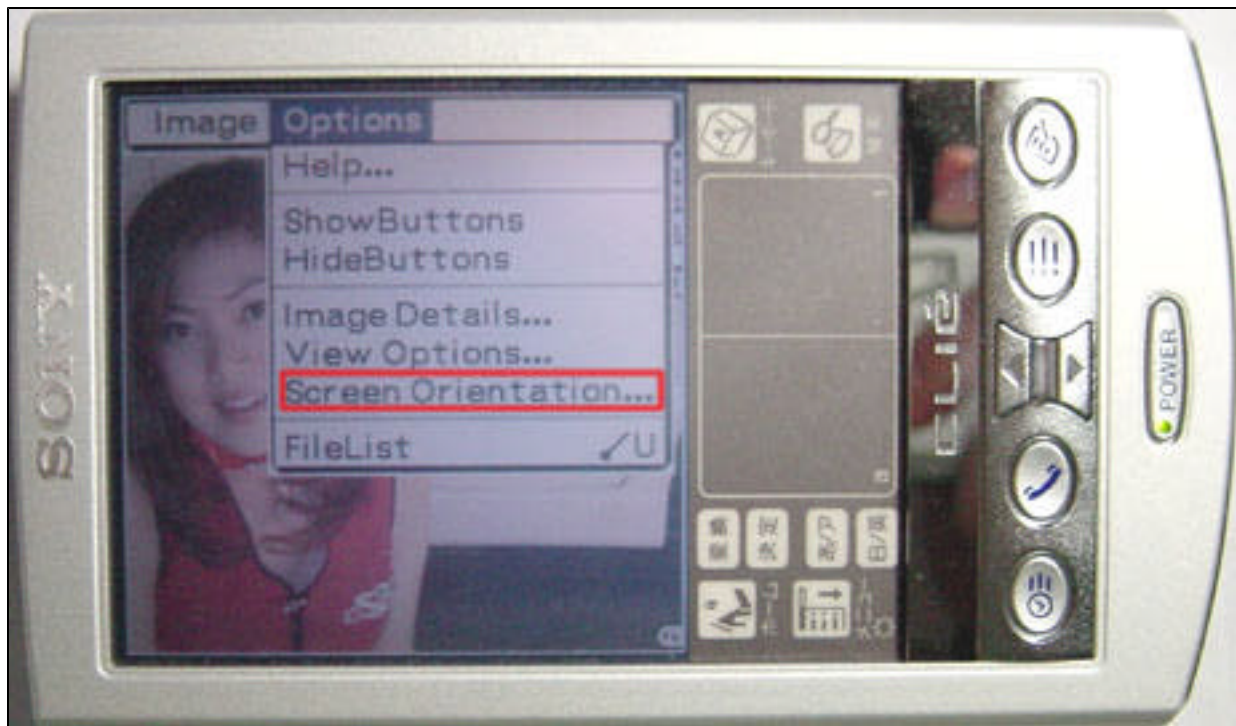
Stop	Return to File List Panel
Fast Forward	Skip to next image file.
Fast Reverse	Selects previous file item.

Image Panel

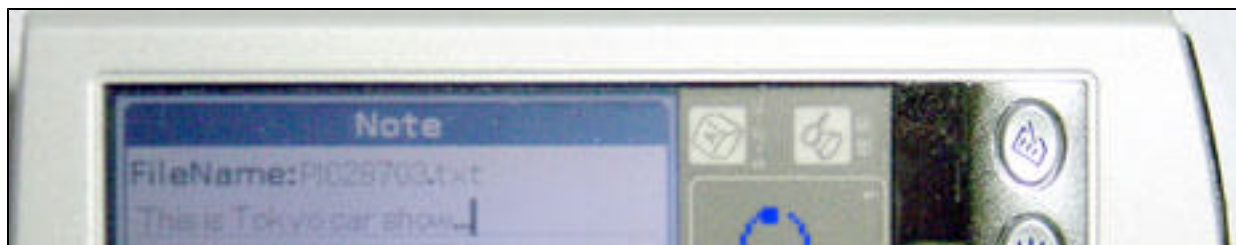
Play	Show/Hide buttons.
Stop	Return to File List Panel
Fast Forward	Selects next file item.
Fast Reverse	Selects previous file item.
Volume Up	Zoom-in to next scale level.
Volume Down	Zoom-out to next scale level.

Sony CLIE Screen Rotation (RMC)

On color Sony CLIE with PalmOS 4.0 and above, JpegWatch supports screen rotation at 0, 90, 180, and 270 degree. When the screen is rotated to different orientation, pen coordinates and Graffiti writing area in Silk Screen are both adjusted. However, the buttons in Silk Screen remains the same.



Button positions at Silk Screen remain the same

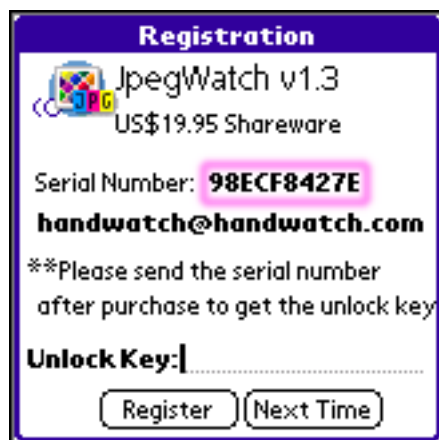




Graffiti writing area at Silk Screen is adjusted

Free Review and Evaluation Copy

If you wish to write a review about **JpegWatch**, or wish to evaluate a copy for quantity purchase, a free review/evaluation copy is provided. Please email **JpegWatch Serial Number** to handwatch@handwatch.com for a free evaluation key. The key will be unlocked application for certain period of time. After the review is published, or the quantity purchase is made, the review author or buyer will be emailed the unlock key to unlock the application permanently.



Contact Information

For any suggestions and bug reports, please send the email to jpegwatch@handwatch.com

For latest version on **JpegWatch**, please visit HandWatch web site at <http://www.handwatch.com>

