



Dental server installation - manual

If you do not need network option, you do not have to read these instructions.

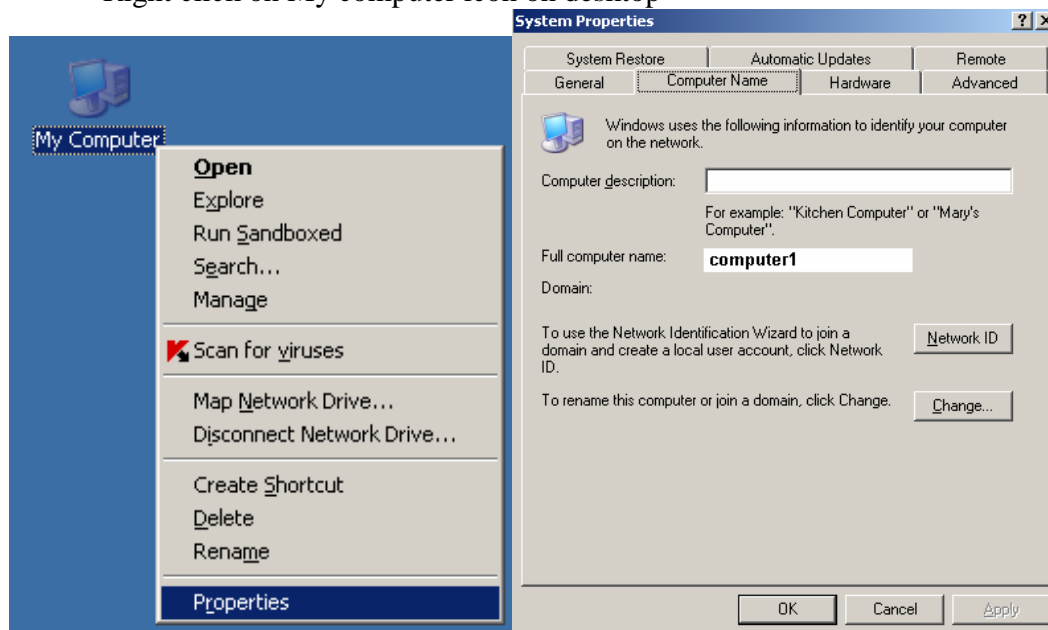
If you need network option follow these steps to install Dental clinic server and client application.

DENTAL SERVER INSTALATION

1. Decide where you want to install server application (e.g. we decided to install on computer1 /Computer 1 is computer name on the network/.

How you can find computer name?

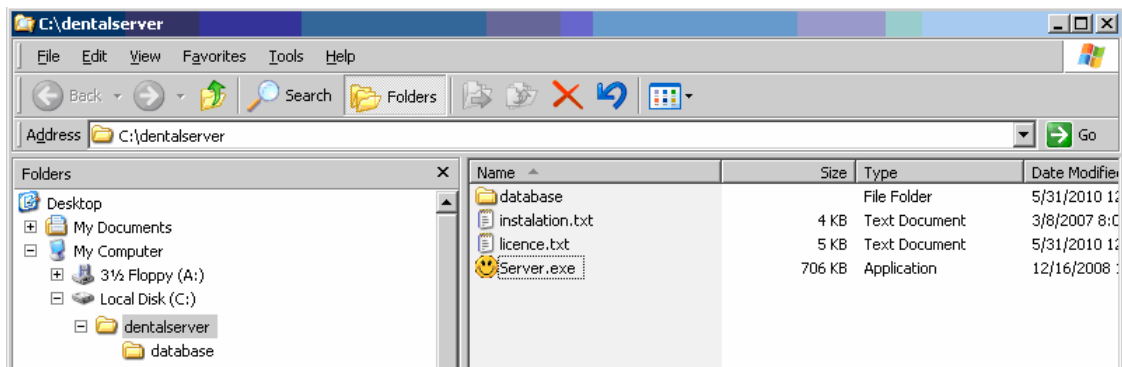
Right click on My computer icon on desktop



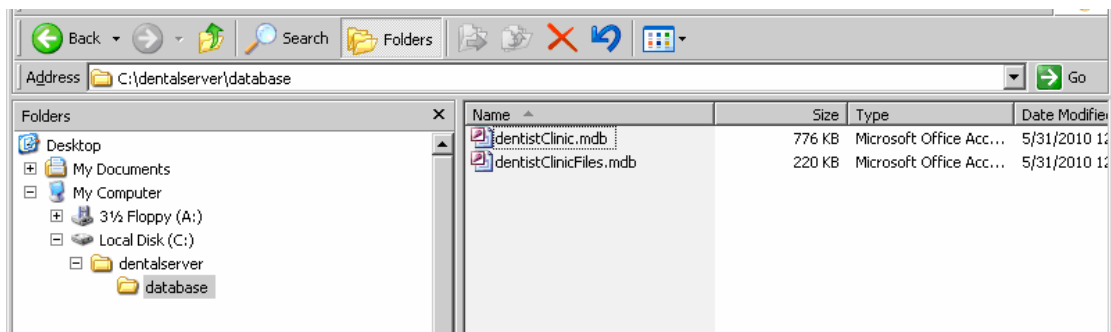


Dental server installation - manual

2. Copy server folder to some new folder on Computer1 e.g. c:\dentalserver\



3. Copy "database" folder to "c:\dentalserver\" folder, so you will have directory structure like on picture bellow.



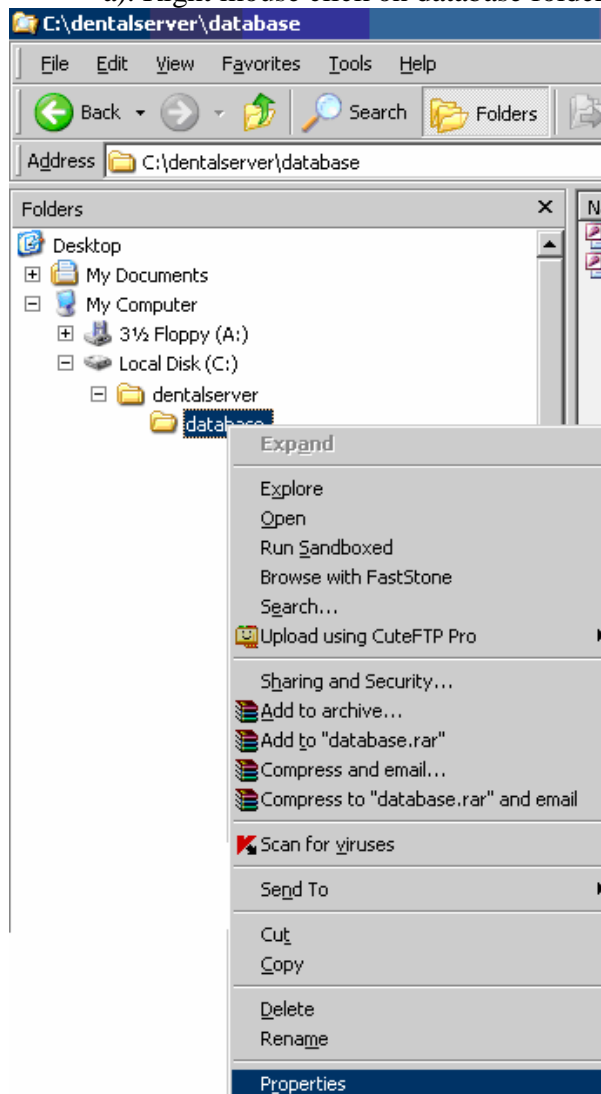


Dental server installation - manual

4. Now you must share folder database (c:\dentalserver\\database) to other computers that will use Dental clinic client software.

Just follow steps displayed on pictures bellow:

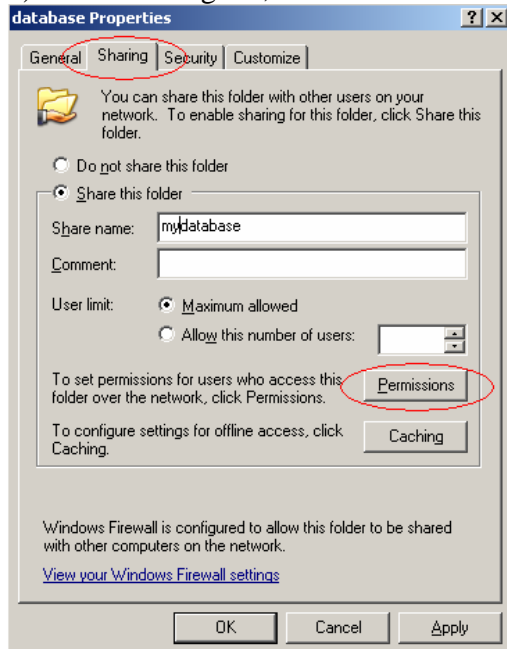
a). Right mouse click on database folder and select properties



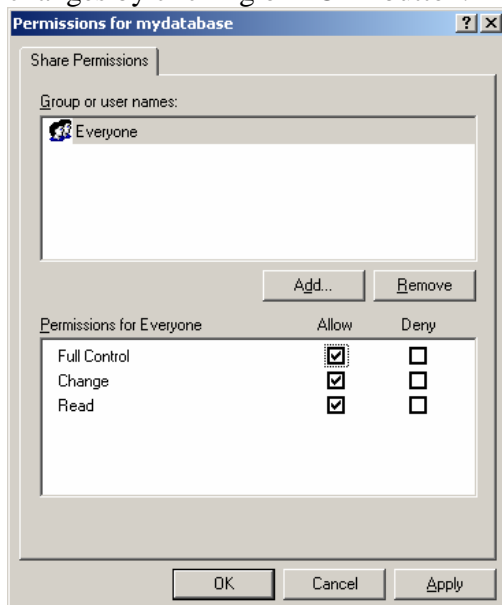


Dental server installation - manual

b).Select sharing tab, than select “Share this folder” enter name “mydatabase”



Thank click on “Permissions” and select “Full control”. Thank Confirm all changes by clicking on “OK” button.



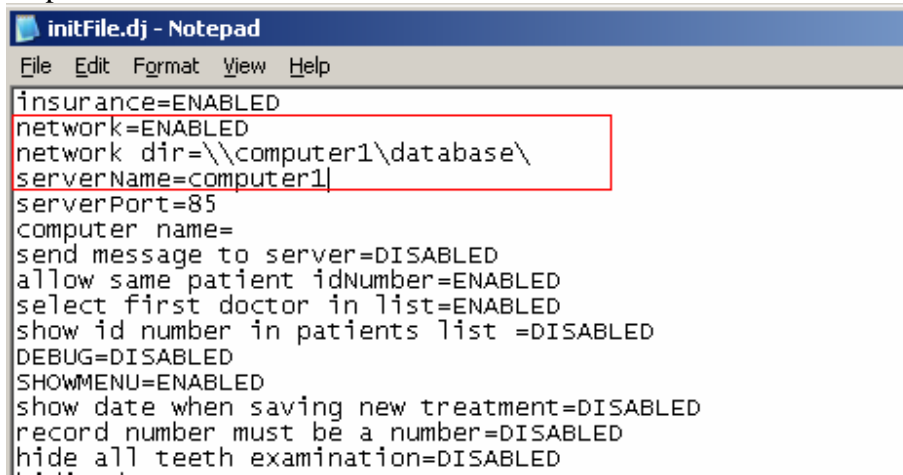
So, now we have shared database folder with “mydatabase” share name.



DENTAL CLIENT – SET UP

Just we need to point client dental software to this shared database.

Now on dental software client, open “initfile.dj” with notepad and change lines as shown on picture bellow:

A screenshot of a Notepad window titled "initFile.dj - Notepad". The window has a menu bar with "File", "Edit", "Format", "View", and "Help". The text content is as follows:

```
insurance=ENABLED
network=ENABLED
network dir=\\computer1\database\
serverName=computer1
serverPort=85
computer name=
send message to server=DISABLED
allow same patient idNumber=ENABLED
select first doctor in list=ENABLED
show id number in patients list =DISABLED
DEBUG=DISABLED
SHOWMENU=ENABLED
show date when saving new treatment=DISABLED
record number must be a number=DISABLED
hide all teeth examination=DISABLED
... ..
```

A red rectangular box highlights the lines: `network dir=\\computer1\database\`, `serverName=computer1`, and `serverPort=85`.

Instead “computer1” you may use computer IP like “192.168.1.1”

For any additiona questions please, feel free to ask.

Email: support@mydentalsoftware.com