



The ultimate email filtering, and spam / phishing tracing and reporting solution.

Copyright © 2010, hendrickson software components
All rights reserved.

Description

- Ⓟ Purify is an email filter.
- Ⓟ Purify can trace and report email abuse (spam).

Features

- P - Filter email using powerful statistical Bayesian type filter.
- P - Filter email by country of origin.
- P - Filter, accept, or ignore email based on user defined phrases.
- P - Accept email from easily imported friends list.
- P - Forward valid email to your iPhone, or other SMTP service.
- P - Filter image spam.
- P - Filter email not addressed to you, or uses incorrect proper name.
- P - Report spammers and phishers to their ISPs with a button click!
- P - Data feed for upcoming hsc product "Compass."
- P - Available for **Windows**, **Macintosh** (Universal Binary), and **Linux**.
- P - Works with virtually every email client (Apple Mail, Outlook, etc.).
- P - Supports POP, POP SSL, IMAP, IMAP SSL.
- P - Use in standalone, or workgroup mode.
- P - Workgroup mode supports combo of Windows, Macintosh, Linux users.
- P - Macintosh version is fully AppleScript-able.

Operation

Purify acts as a “pass through” filter for your email.

What is a “pass through” filter? A filter that “takes a peek” at your email messages as they “pass through” the filter, rates the email based on rules that you’ve define, and appends rating information to the message for you to use with your email clients rules. Here are three examples of rating information.

X-PURIFY-RATING: SPAM

X-PURIFY-REASON: Country fault CN, China

X-PURIFY-RATING: HAM

X-PURIFY-REASON: Jeffrian Filter marked as HAM 0.0183654

X-PURIFY-RATING: IGNORE

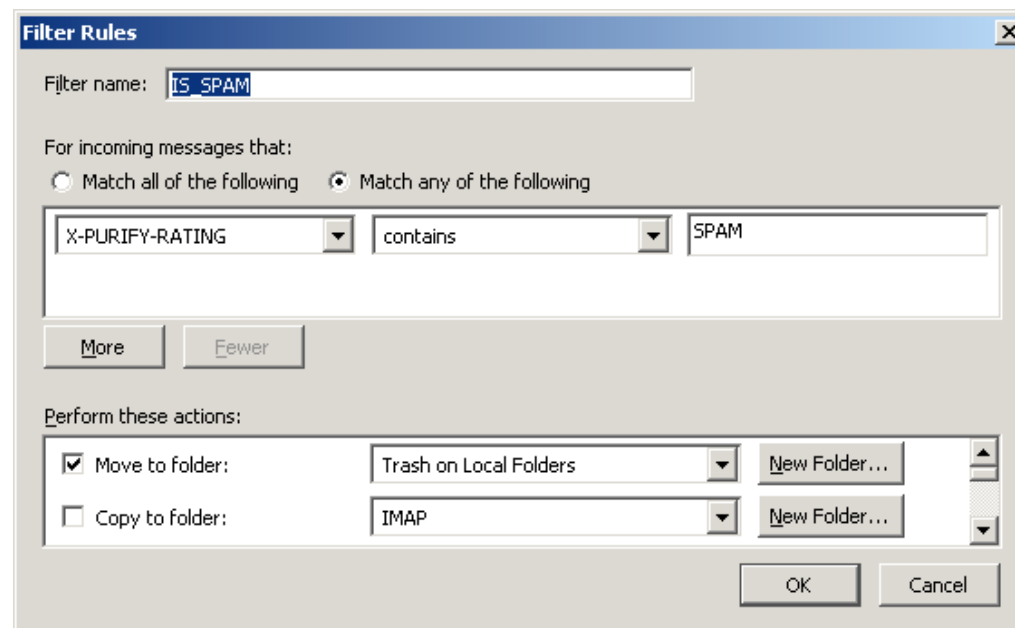
X-PURIFY-REASON: Ignorelisted (PInTxt)-'abuse@'

Operation (Cont'd)

Using the rating information examples from the previous page, you can easily define a rule in your email client software (Thunderbird example shown) that will move messages rated as SPAM to the trash. Simple eh?

X-PURIFY-RATING: SPAM

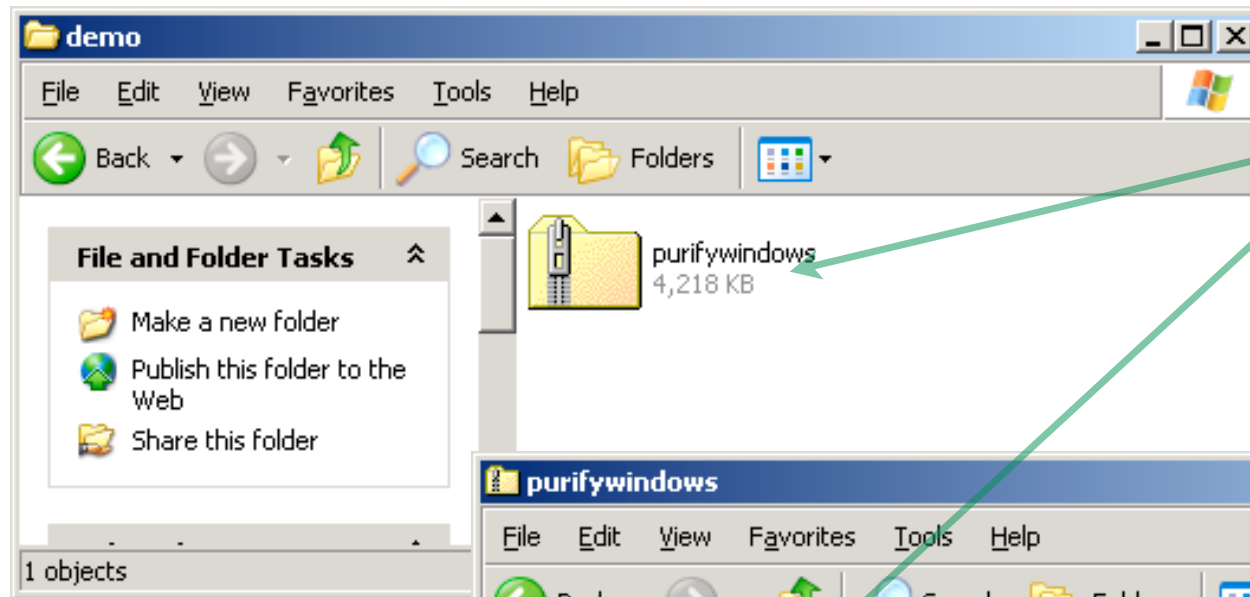
X-PURIFY-REASON: Country fault CN, China



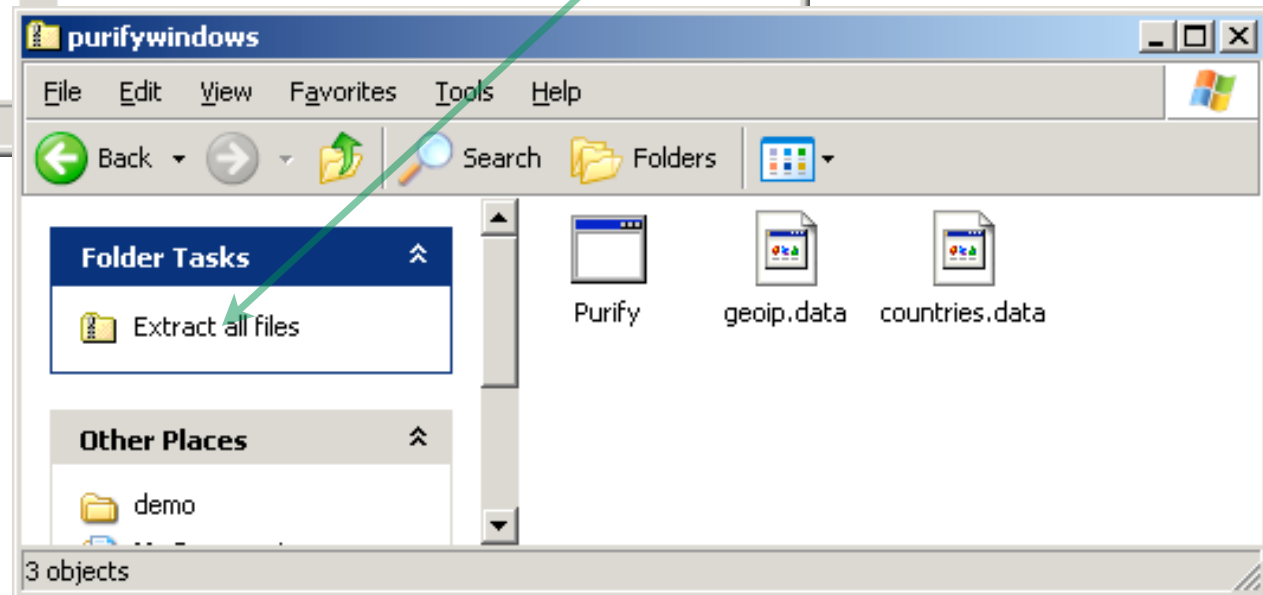
Installation

So, how do we set this thing up?

Installation (Cont'd)



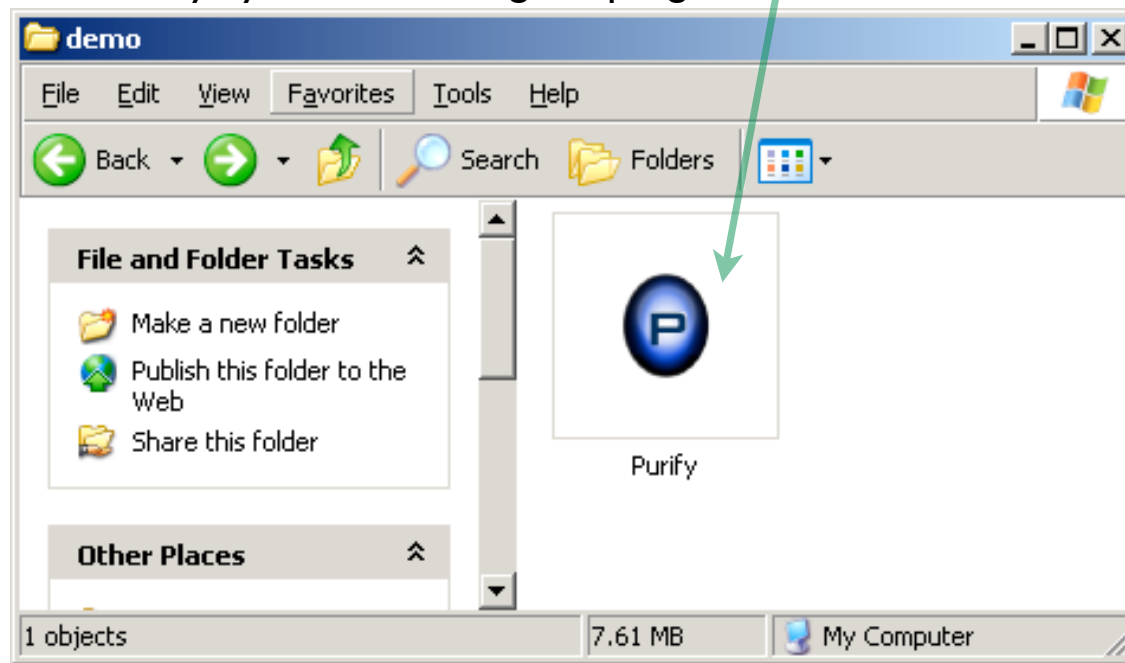
Double-click the downloaded zip file and extract the contents of the Purify download to the folder of your choice



Note! : Windows users copy ALL of the contents of the .zip file to your destination folder!

Installation (Cont'd)

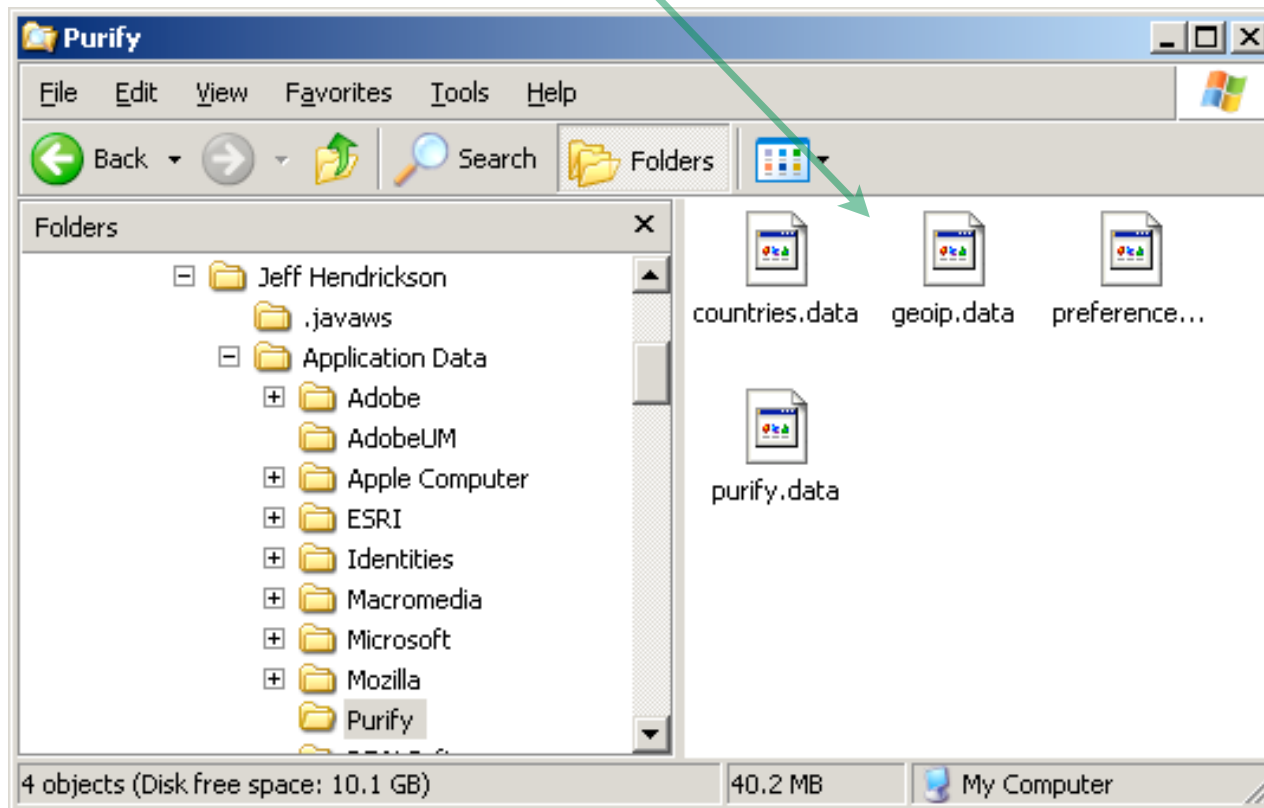
Start Purify by double clicking the program.



Note! : Windows 7 users, run Purify as admin!
Right click, run as admin.

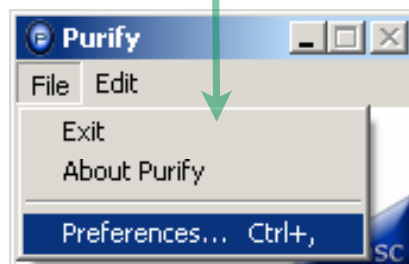
Installation (Cont'd)

The first time that you run Purify, it will copy its geo reference database (geoip), and its country reference database (countries) to your Preferences folder. It will also create your preferences database (preferences), and rating database (purify) in the same folder.



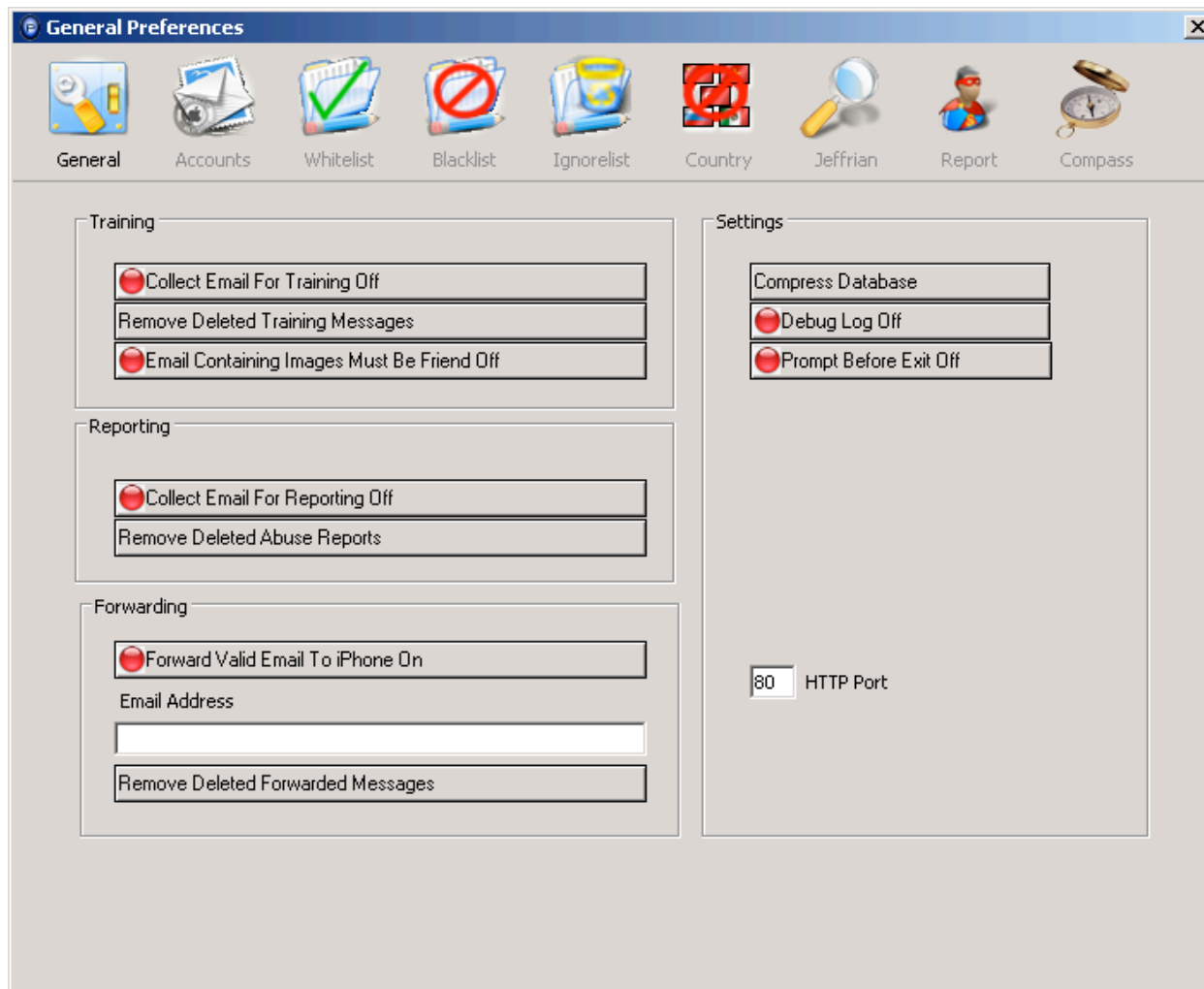
Configuration

From the Purify menu, click Preferences...

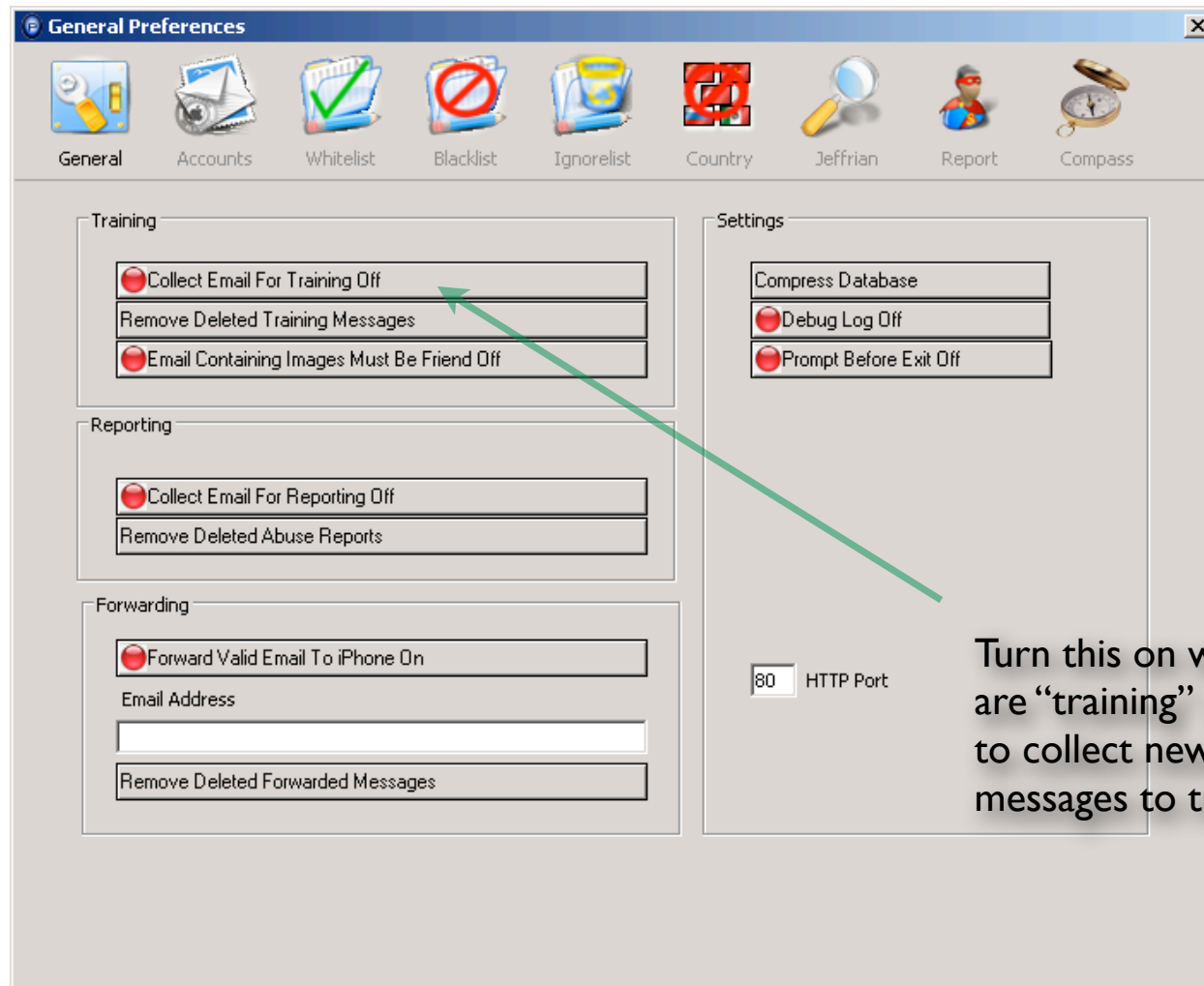


Configuration (Cont'd)

This will bring up the Preferences window.



Configuration (Cont'd)



Turn this on while you are "training" your filter to collect new messages to train.

Configuration (Cont'd)

General Preferences

General Accounts Whitelist Blacklist Ignorelist Country Jeffrian Report Compass

Training

- ☐ Collect Email For Training Off
- ☐ Remove Deleted Training Messages
- ☐ Email Containing Images Must Be Friend Off

Reporting

- ☐ Collect Email For Reporting Off
- ☐ Remove Deleted Abuse Reports

Forwarding

- ☐ Forward Valid Email To iPhone On
- Email Address
-
- ☐ Remove Deleted Forwarded Messages

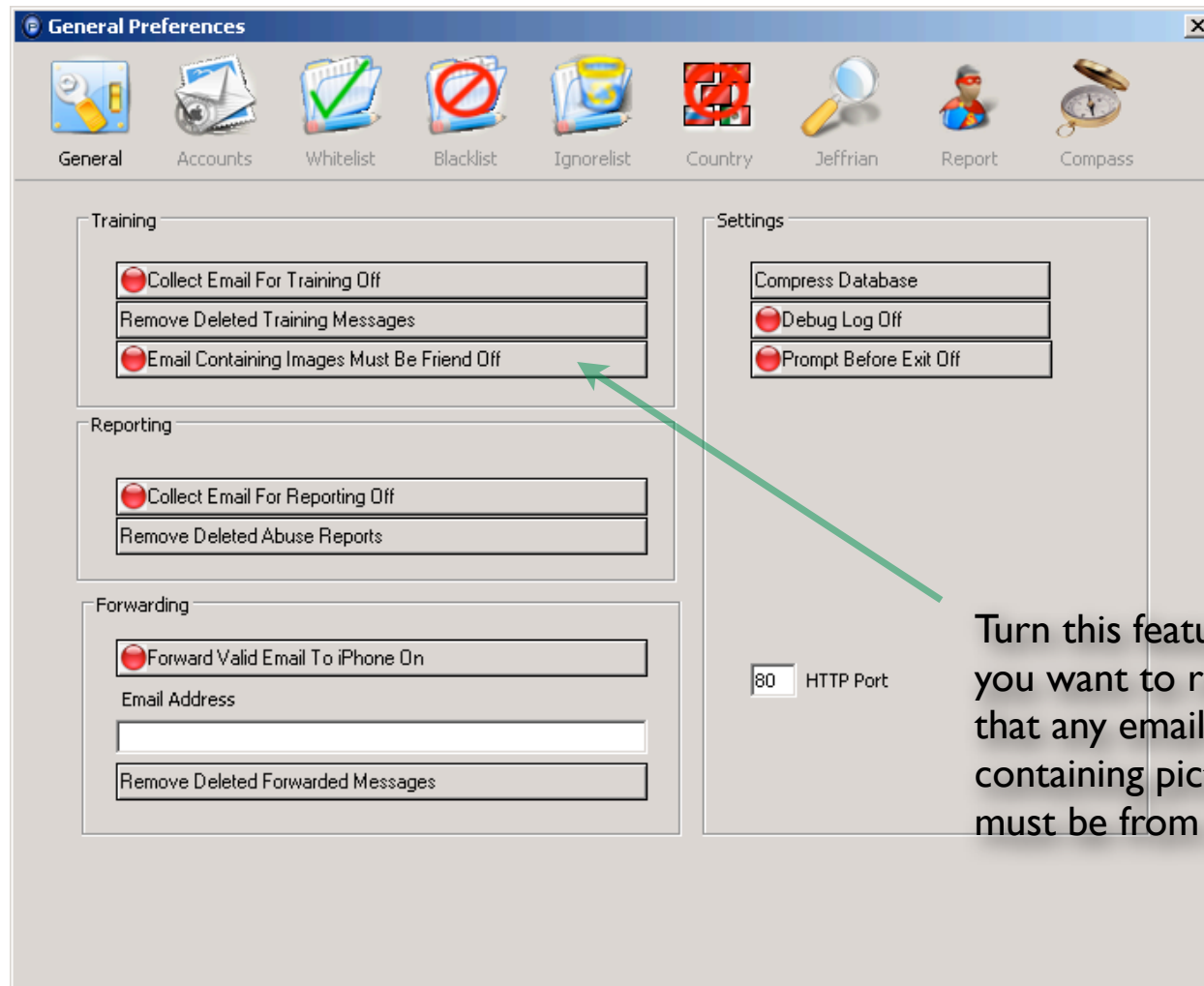
Settings

- ☐ Compress Database
- ☐ Debug Log Off
- ☐ Prompt Before Exit Off

80 HTTP Port

Click this button to remove the messages that you have trained and marked for deleted in the Purify database.

Configuration (Cont'd)



Turn this feature on if you want to require that any email containing pictures must be from a friend.

Configuration (Cont'd)

General Preferences

General Accounts Whitelist Blacklist Ignorelist Country Jeffrian Report Compass

Training

- ☐ Collect Email For Training Off
- Remove Deleted Training Messages
- ☐ Email Containing Images Must Be Friend Off

Reporting

- ☐ Collect Email For Reporting Off
- Remove Deleted Abuse Reports

Forwarding

- ☐ Forward Valid Email To iPhone On
- Email Address
- Remove Deleted Forwarded Messages

Settings

- Compress Database
- ☐ Debug Log Off
- ☐ Prompt Before Exit Off

80 HTTP Port

Turn this on if you want to collect abusive email for spam reporting.

Configuration (Cont'd)

General Preferences

General Accounts Whitelist Blacklist Ignorelist Country Jeffrian Report Compass

Training

- ☐ Collect Email For Training Off
- ☐ Remove Deleted Training Messages
- ☐ Email Containing Images Must Be Friend Off

Reporting

- ☐ Collect Email For Reporting Off
- ☐ Remove Deleted Abuse Reports

Forwarding

- ☐ Forward Valid Email To iPhone On
- Email Address
-
- ☐ Remove Deleted Forwarded Messages

Settings

- ☐ Compress Database
- ☐ Debug Log Off
- ☐ Prompt Before Exit Off

80 HTTP Port

Click this button to remove the spam that you have reviewed and marked for deletion.

Configuration (Cont'd)

General Preferences

General Accounts Whitelist Blacklist Ignorelist Country Jeffrian Report Compass

Training

- ☐ Collect Email For Training Off
- ☐ Remove Deleted Training Messages
- ☐ Email Containing Images Must Be Friend Off

Reporting

- ☐ Collect Email For Reporting Off
- ☐ Remove Deleted Abuse Reports

Forwarding

- ☐ Forward Valid Email To iPhone On
- Email Address:
- ☐ Remove Deleted Forwarded Messages

Settings

- ☐ Compress Database
- ☐ Debug Log Off
- ☐ Prompt Before Exit Off

80 HTTP Port

If you want to forward the email that Purify has rated as HAM, then turn this feature on, and enter the email address to which you would like your email forwarded. Every so often, you'll want to delete the record of your forwarded messages.

Configuration (Cont'd)

General Preferences

General Accounts Whitelist Blacklist Ignorelist Country Jeffrian Report Compass

Training

Reporting

Forwarding

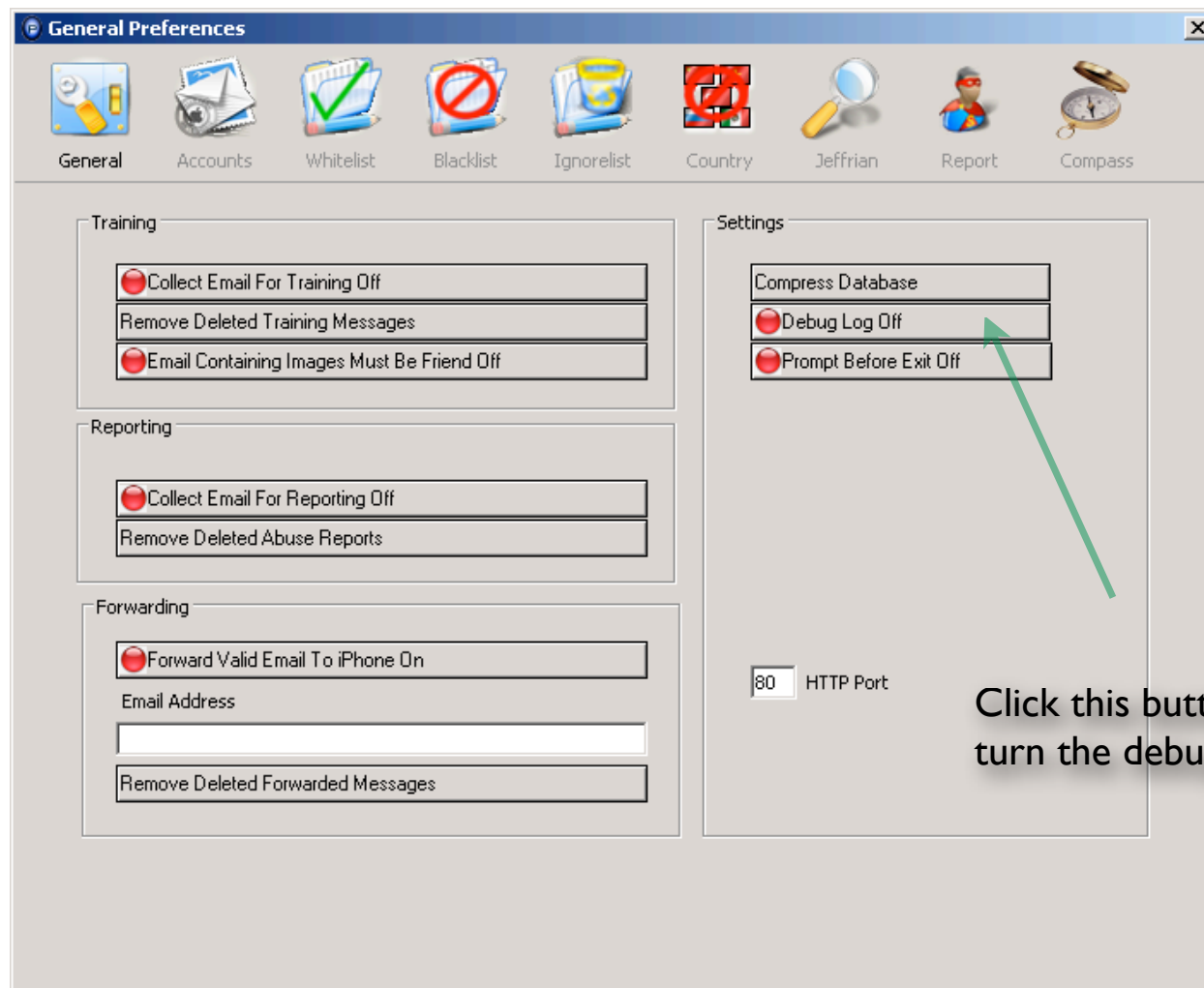
Email Address

Settings

80 HTTP Port

Click this button every so often to recover the unused disk space in your database.

Configuration (Cont'd)



Click this button to turn the debug log on.

Configuration (Cont'd)

General Preferences

General Accounts Whitelist Blacklist Ignorelist Country Jeffrian Report Compass

Training

- ☐ Collect Email For Training Off
- ☐ Remove Deleted Training Messages
- ☐ Email Containing Images Must Be Friend Off

Reporting

- ☐ Collect Email For Reporting Off
- ☐ Remove Deleted Abuse Reports

Forwarding

- ☐ Forward Valid Email To iPhone On
- Email Address
- ☐ Remove Deleted Forwarded Messages

Settings

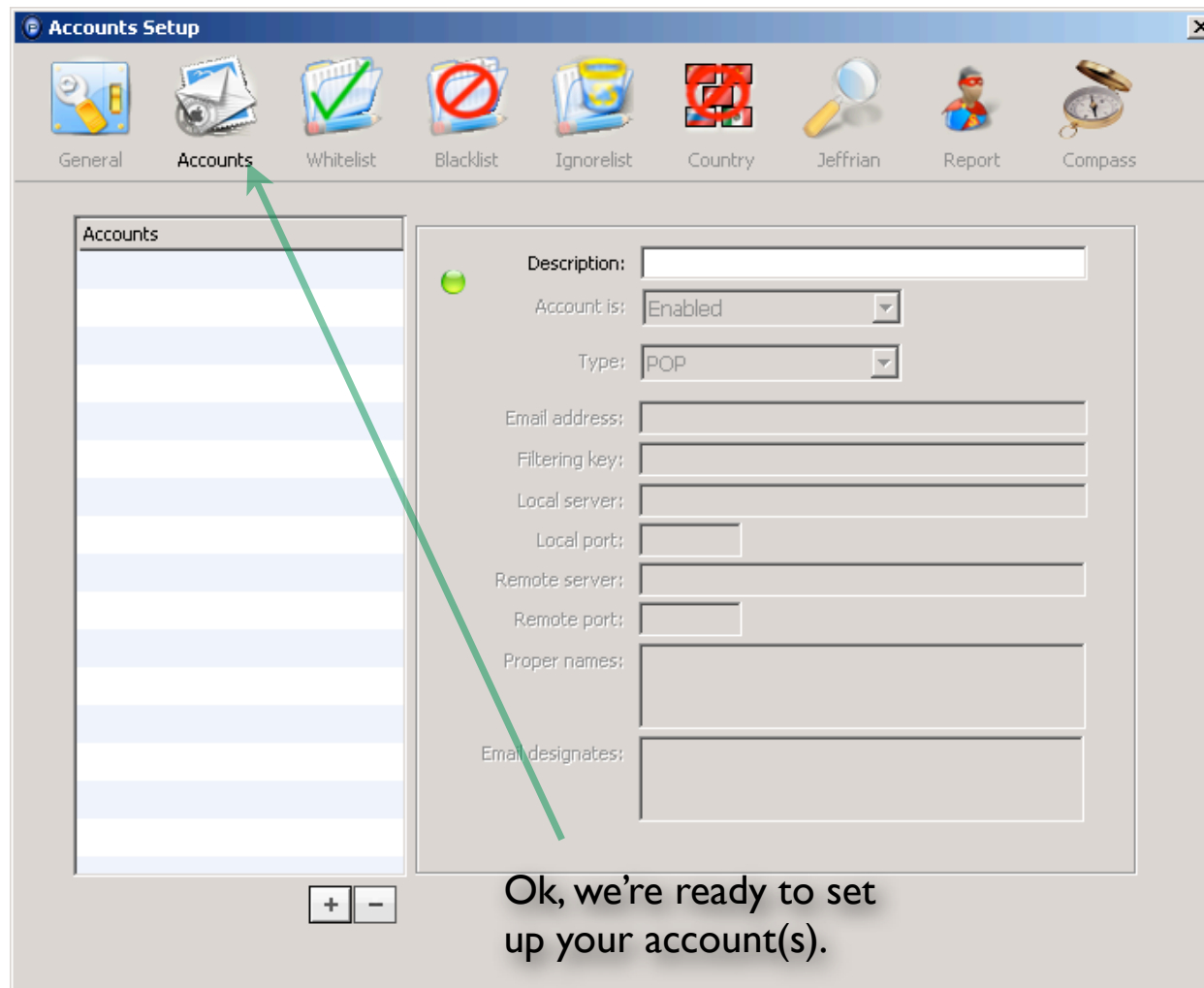
- ☐ Compress Database
- ☐ Debug Log Off
- ☐ Prompt Before Exit Off

80 HTTP Port

Set this item to your preference of being prompted before Purify exits, or not.

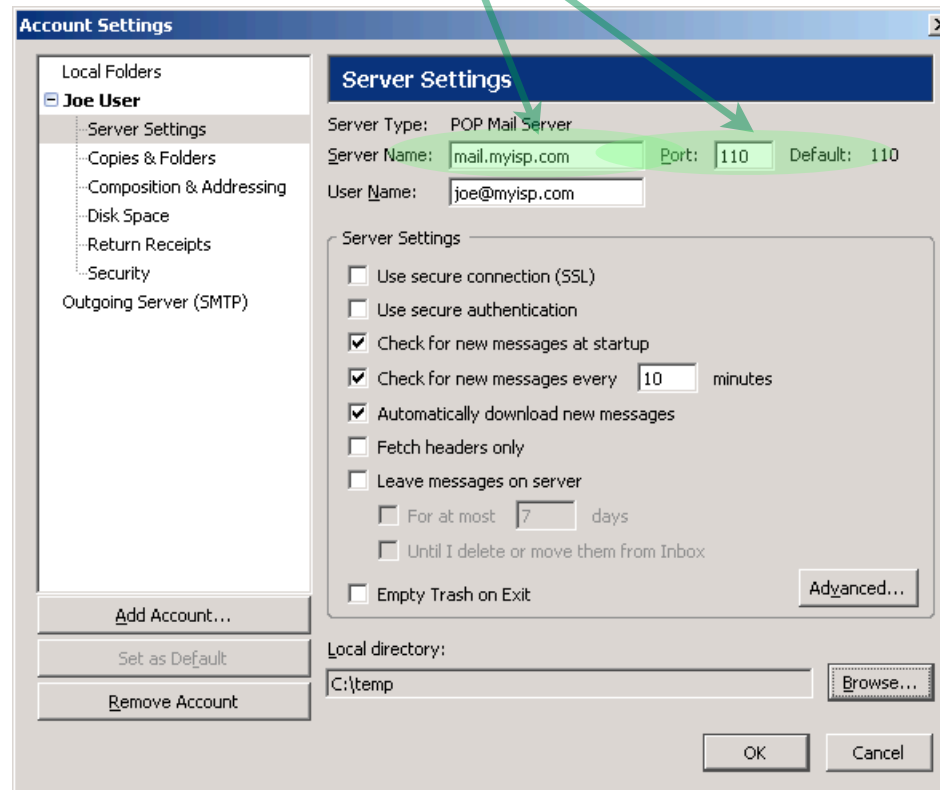
Set your HTTP Port. This should be 80, unless you have been told differently.

Configuration (Cont'd)



Configuration (Cont'd)

A word about this step before we continue. We need to configure Purify, and your email client software to cooperate to deliver spam-free email. Before introducing Purify to your email client, your configuration might look something like this (Thunderbird example shown)... Note the areas highlighted. These are the **ONLY** items that we are going to change to enable Purify (more on this in a moment).



Configuration (Cont'd)

Let's setup a Purify account to support the previous example.

Accounts Setup

General Accounts Whitelist Blacklist Ignorelist Country Jeffrian Report Compass

Accounts

Joe's Email

Description: Joe's Email

Account is: ☒ Enabled

Type: ☒ POP

Email address: joe@myisp.com

Filtering key: 11-22-33-44

Local server: localhost

Local port: 2020

Remote server: mail.myisp.com

Remote port: 110

Proper names: joe, joseph, user

Email designates: chochotrains@lists.yahoo.com

More on these two items in a moment.

Server Type: POP Mail Server

Server Name: mail.myisp.com

Port: 110

Default: 110

Description.

Status.

Type (POP, POP SSL, IMAP, IMAP SSL)

Email address.

Filtering key. You get this from us when you purchase Purify.

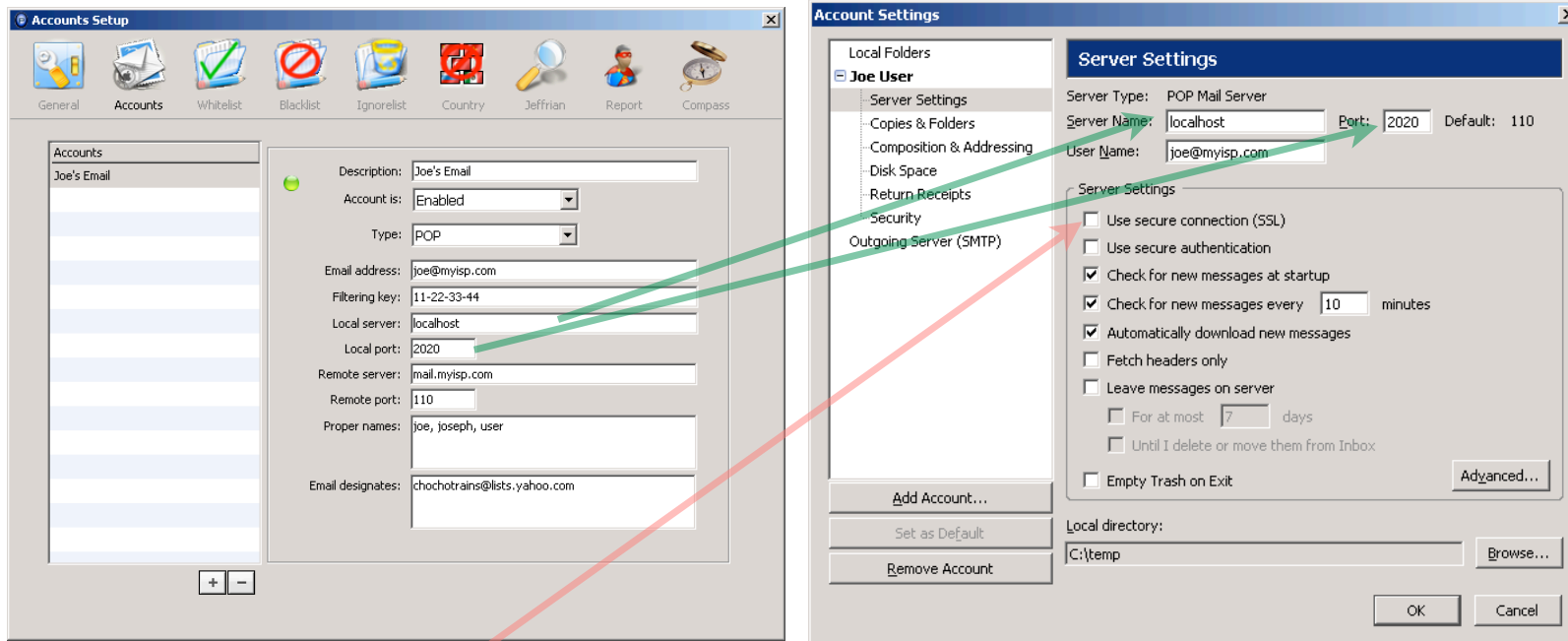
Local server name, this should be localhost unless you know differently.

Local port. Purify will "listen" on this port number for a connection from your email client. Your first account might use 2020, second 2021, etc....

Remote server, port. (Highlighted areas from previous page)

Configuration (Cont'd)

Ok, let's configure our email client to match our Purify settings.



Note: Don't check Use SSL. Purify expects a plain connection between it and your email client. It takes care of the SSL part if/when you use POP SSL, or IMAP SSL in your Purify settings.

Remember "the only two items that will change" in your email client software? Let's change them.

Configuration (Cont'd)

Ok, here are your email client configuration settings before, and after. Note, only two settings have changed in Thunderbird!

Thunderbird before.

Server Type:	POP Mail Server		
Server Name:	<input type="text" value="mail.myisp.com"/>	Port:	<input type="text" value="110"/> Default: 110
User Name:	<input type="text" value="joe@myisp.com"/>		

Thunderbird after.

Server Type:	POP Mail Server		
Server Name:	<input type="text" value="localhost"/>	Port:	<input type="text" value="2020"/> Default: 110
User Name:	<input type="text" value="joe@myisp.com"/>		

This now matches our Purify settings!

Local server:	<input type="text" value="localhost"/>
Local port:	<input type="text" value="2020"/>
Remote server:	<input type="text" value="mail.myisp.com"/>
Remote port:	<input type="text" value="110"/>

And Purify knows how to connect to your email server!

Configuration (Cont'd)

Email designates. This is a very powerful Purify filtering feature. If you provide proper names (e.g. jeff, jeffrey, hendrickson), and email designates (e.g. techsupport@hendricom.com), then Purify will check these proper names, and email designates against your received messages, and verify that the message is for you.

Accounts Setup

General Accounts Whitelist Blacklist Ignorelist Country Jeffrian Report Compass

Accounts

Joe's Email

Description: Joe's Email

Account is: Enabled

Type: POP

Email address: joe@myisp.com

Filtering key: 11-22-33-44

Local server: localhost

Local port: 2020

Remote server: mail.myisp.com

Remote port: 110

Proper names: joe, joseph, user

Email designates: chochotrains@lists.yahoo.com

Proper names. If supplied, Purify will verify that a message to your email address uses these proper names if they are provided in a message. This prevents the spammer trick of "guessing your proper name" when they send spam. A message to "Betty Hudson" <techsupport@hendricom.com> would be filtered using this feature. To disable this feature, leave proper names empty.

Email designates. If supplied, Purify will verify that a message not directly to your primary email address contains at least contains one of these email designate addresses. This is VERY useful to filter spammer shotgun emails, and will filter an email to nonexistent@hendricom.com. You can also use it to verify email lists to which you belong. e.g. chochotrains@lists.yahoo.com. To disable this feature, leave email designates empty.

Configuration (Cont'd)

Whitelist Expressions

General Accounts Whitelist Blacklist Ignorelist Country Jeffrian Report Compass

Friends

fred@myonlyfriend.com
betty@myonlyfriend.com

Whitelist Expressions

cho cho trains
payment received

Import your friends list as a flat ASCII text file. Formatted like:
addy1@dom.com
addy2@other.com

You can also add them one at a time.

Note: The whitelist, blacklist, and ignorelist are all powered by "regular expressions." You can use this feature as plain text as demonstrated above, but you will not be fully utilizing its power. You can find out more about regular expressions by visiting the hsc message board, or googling regular expressions.

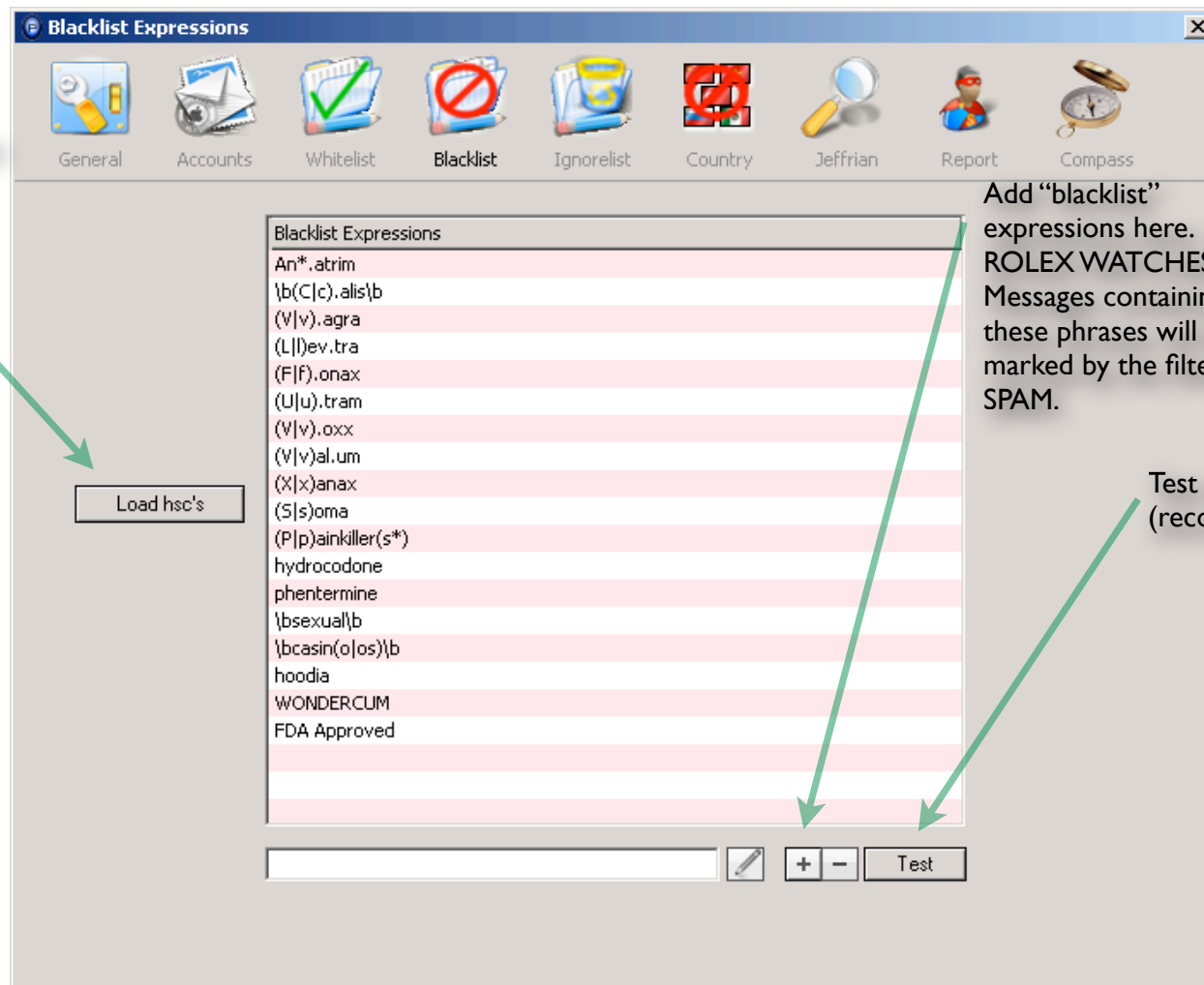
Add "whitelist" expressions here. e.g. BIG PAYMENT
Messages containing these phrases will be marked by the filter as HAM.

Test the expression (recommended).

Note: Whenever you rate an email as "good" using the Jeffrian filter, the email address of that message is automatically entered into your friends list (more on this in a moment).

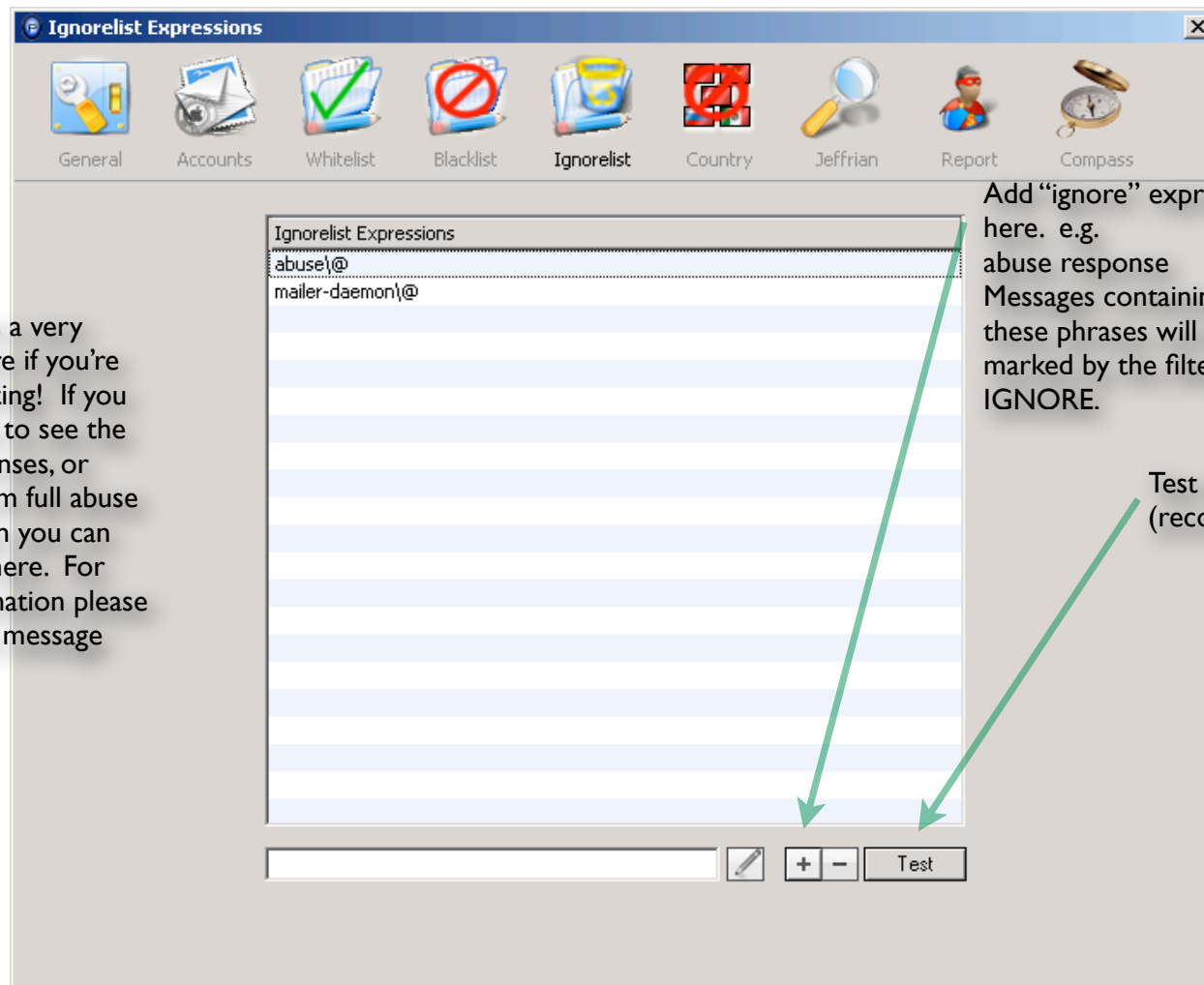
Configuration (Cont'd)

Get a head start by loading the hsc sample blacklist.



Configuration (Cont'd)

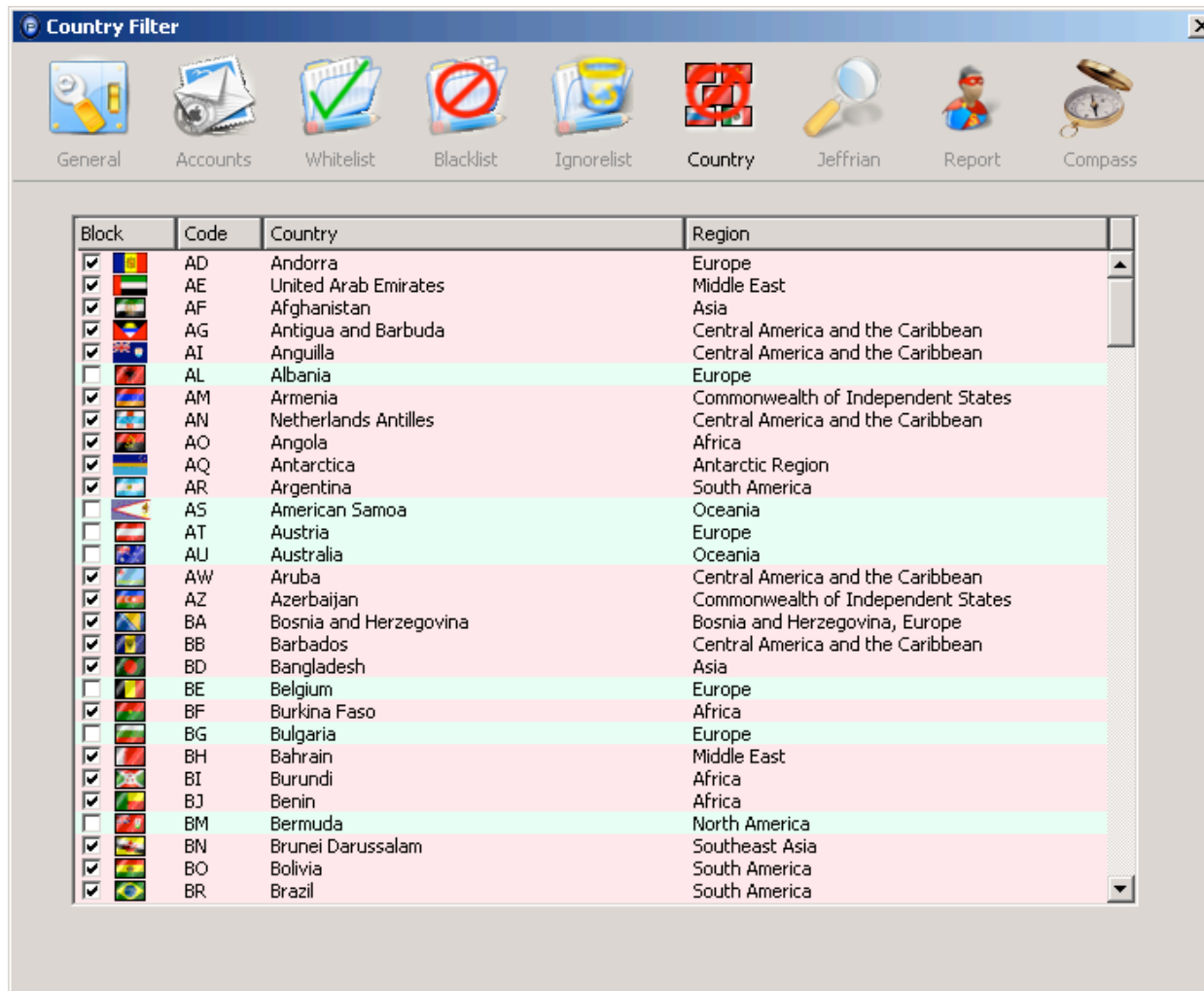
Note: This is a very handy feature if you're spam reporting! If you do not wish to see the abuse responses, or bounces from full abuse inboxes, then you can filter them here. For more information please visit the hsc message board.



Add "ignore" expressions here. e.g. abuse response
Messages containing these phrases will be marked by the filter as IGNORE.

Test the expression (recommended).

Configuration (Cont'd)



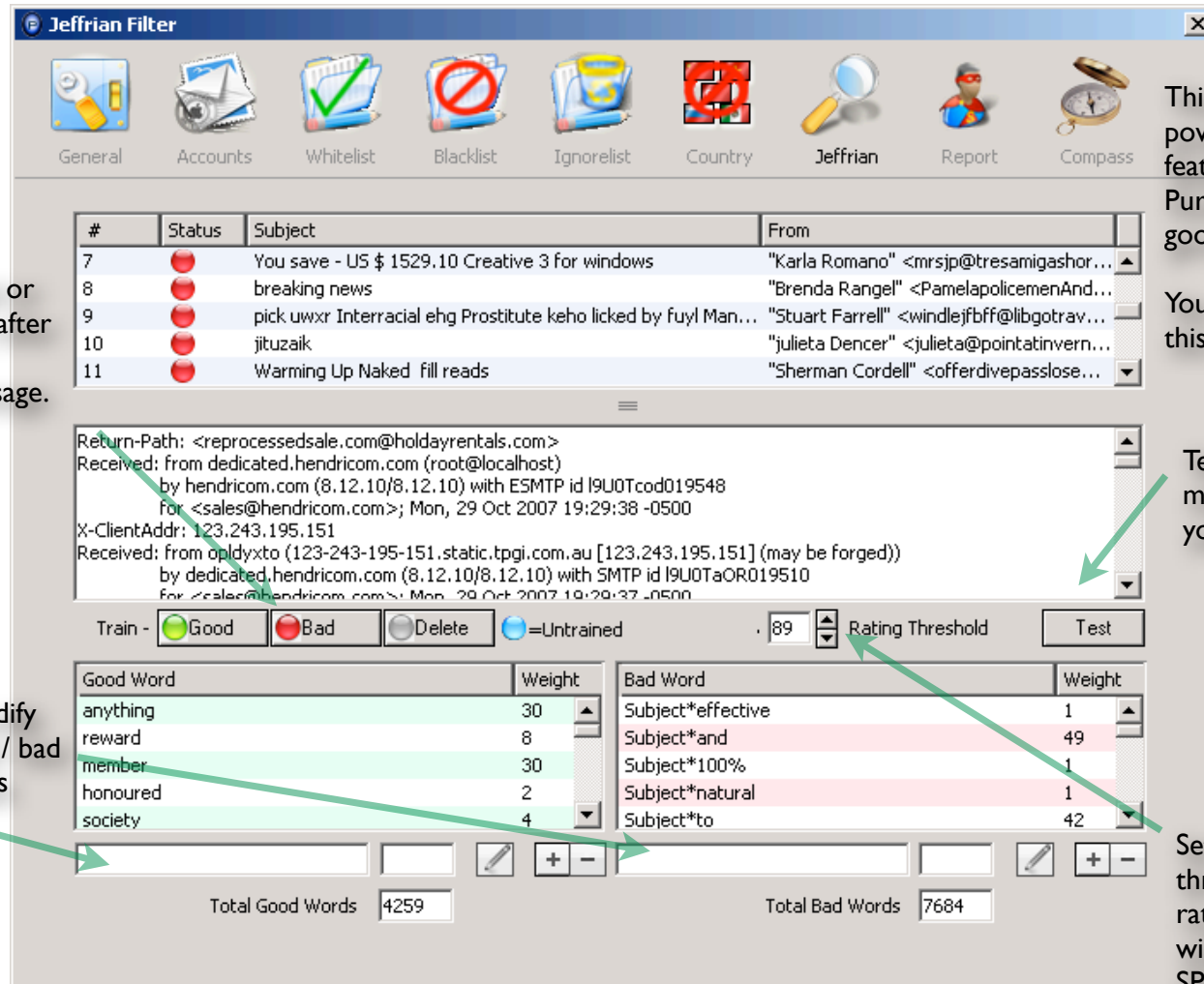
This is a very powerful Purify filtering feature. You can block email by its country of origin!

Imagine the immediate impact on your spam level if you could filter all email originating from Russia, China, Poland, etc...

Configuration (Cont'd)

Train selected message as good or bad, or delete it after you're through training the message.

You can also modify your good word / bad word dictionaries here.



This is another very powerful Purify filtering feature. You can "teach" Purify what you consider good/bad email!

You can train Purify using this user interface.

Test a selected message based on your current settings.

Set your rating threshold. Email rated above this figure will be marked as SPAM.

Configuration (Cont'd)

This is a another very powerful Purify feature. Take revenge on spammers by reporting them to their Internet Service Providers!

Report Email Abuse

General Accounts Whitelist Blacklist Ignorelist Country Jeffrian Report Compass

#	Status	Subject	From
6	●	You save - US \$ 1529.10 Creative 3 for windows	"Karla Romano" <mrsjp@tresamigashor...>
7	●	breaking news	"Brenda Rangel" <PamelapolicemenAnd...>
8	●	pick uwyr Interracial ehg Prostitute keho licked by fuyt Man...	"Stuart Farrell" <windlejfbff@libgotrav...>
9	●	jituzaik	"julieta Dencer" <julieta@pointatinvern...>
10	●	Warming Up Naked fill reads	"Sherman Cordell" <offerdivepasslose...>

Subject: You save - US \$ 1529.10 Creative 3 for windows
 Date: Tue, 30 Oct 2007 09:22:10 +0100
 MIME-Version: 1.0
 Content-Type: text/plain;
 format=flowed;
 charset="Windows-1252";
 reply-type=original
 Content-Transfer-Encoding: 7bit

Delete Report - All Selected

☒ Report Excluded Countries ● =Reported
☒ Report Spamvertized URLs ● =Not Reported

Abuse Reports
 abuse@interbusiness.it
 abuse@telecomitalia.it
 gzy@21cn.com
 nvfvri@126.com

SMTP Server

Server Name mail.myisp.com Port 25 Edit Abuse Message
 Username joe@myisp.com ☒ Use Login
 Password ***** ☐ Use SSL
 Email Address joe@myisp.com Reporting Key 22-33-44-55

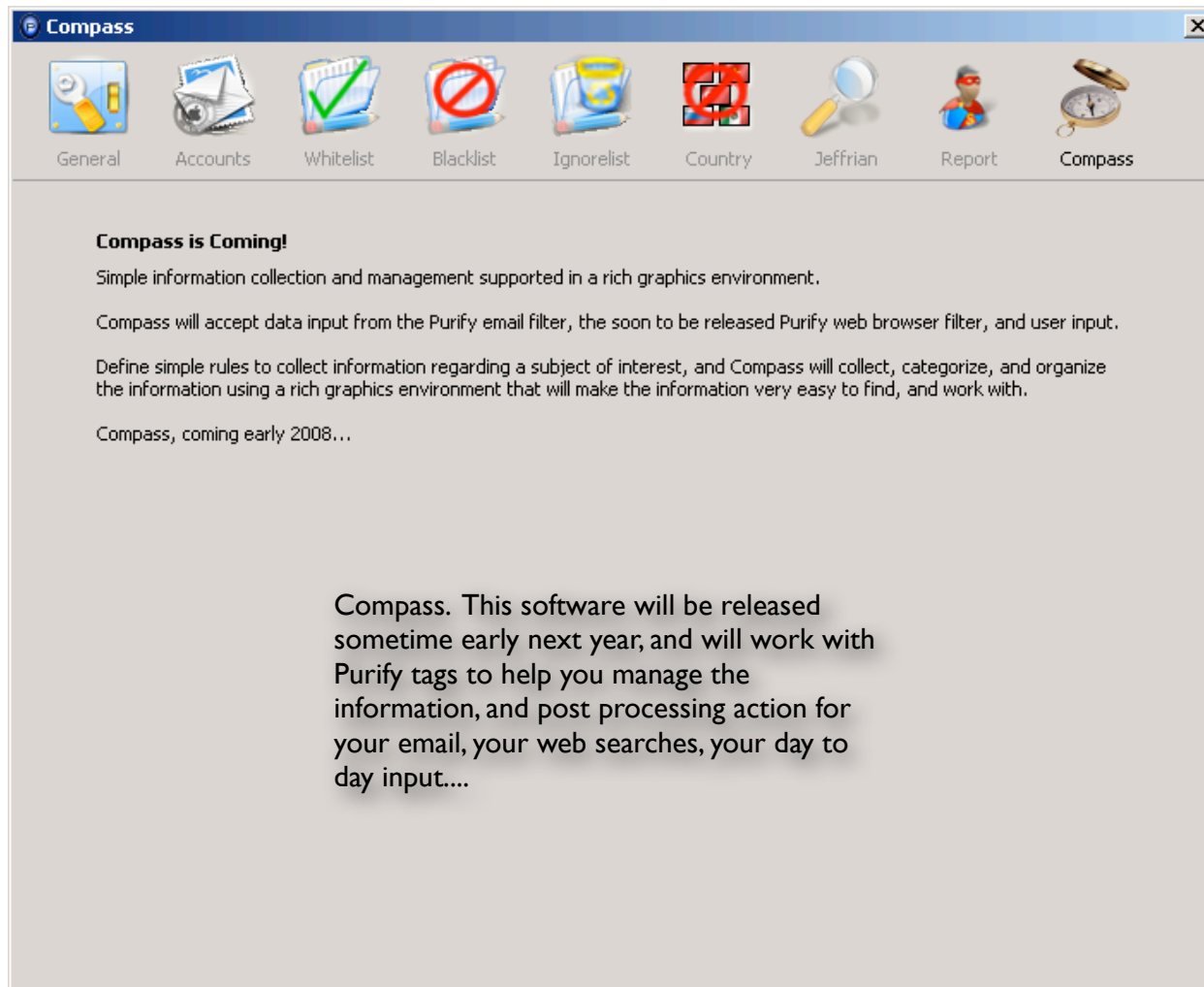
You can do your spam reporting from here.

Most of the items on this page are self explaining.

Configure these settings just as if your were configuring your email client software to send email.

You need a reporting key to use this feature (you need to have purchased reporting with Purify).

Configuration (Cont'd)

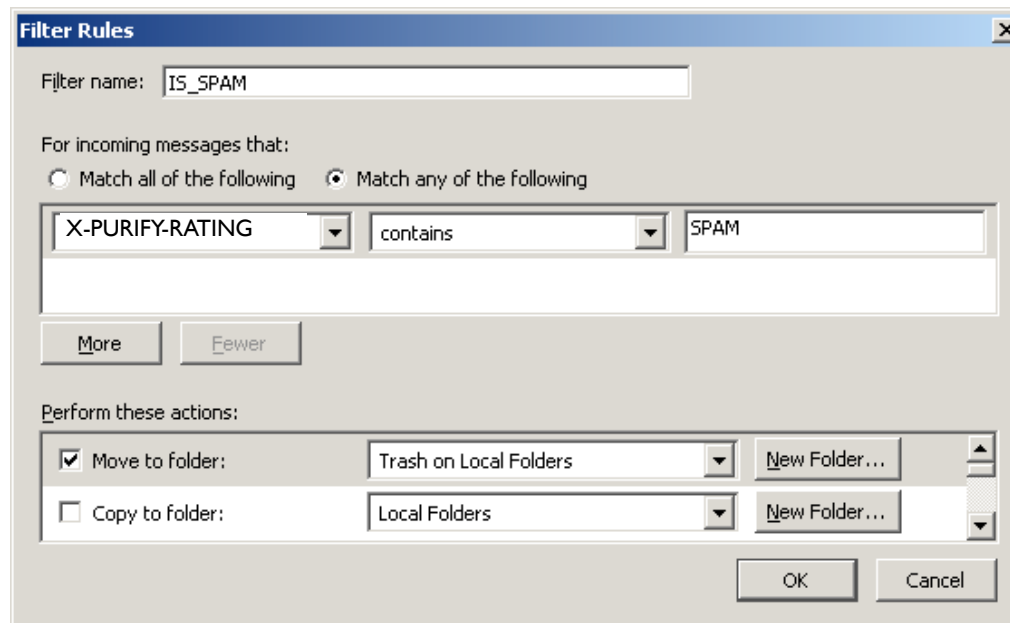


Operation (Cont'd)

Using the rating information examples from the previous page, you can easily define a rule in your email client software (Thunderbird example shown) that will move messages rated as SPAM to the trash. More on next pages...

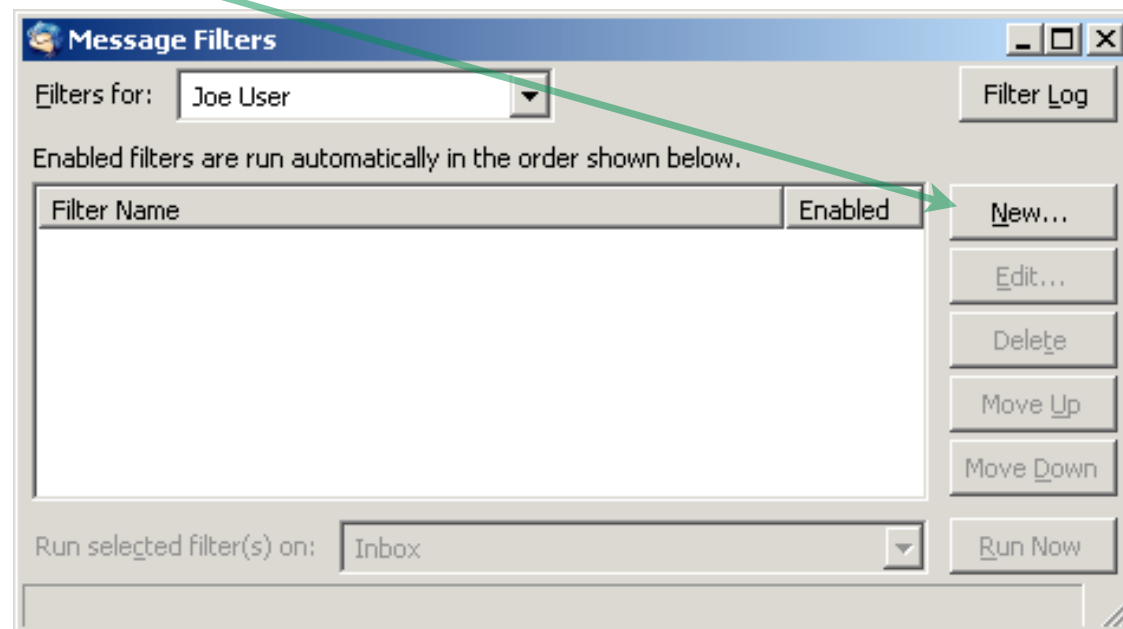
X-PURIFY-RATING: SPAM

X-PURIFY-REASON: Country fault CN, China



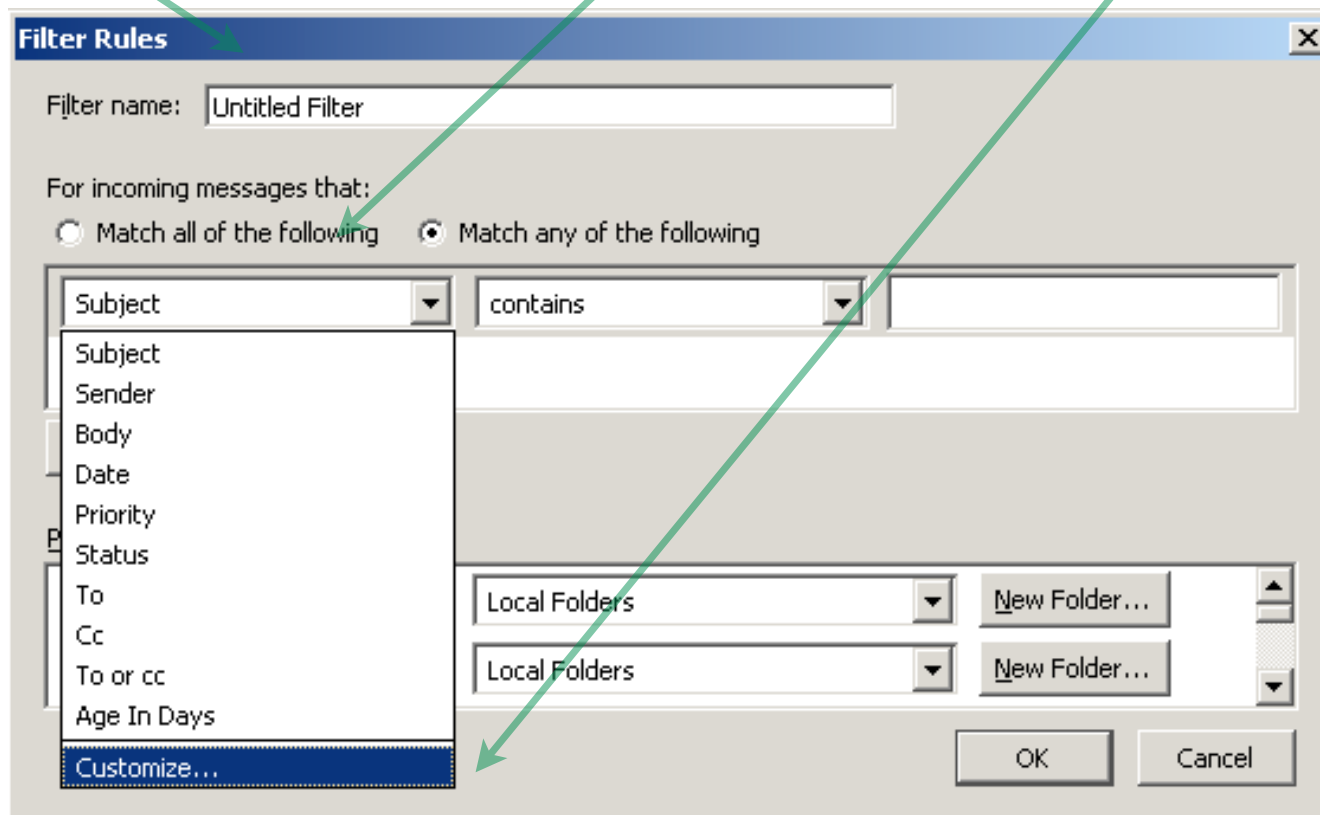
Operation (Cont'd)

Defined rules to manage your email after it has been rated by Purify. First click New.



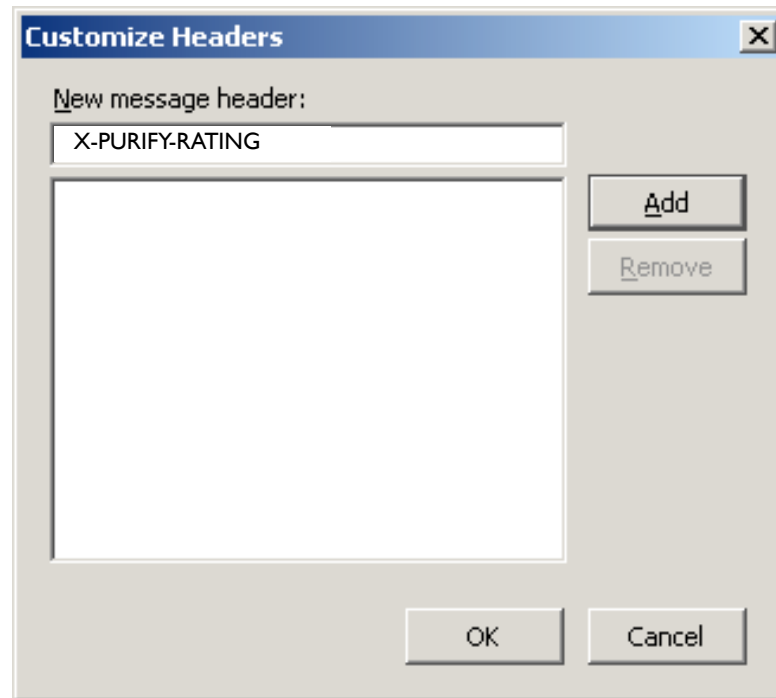
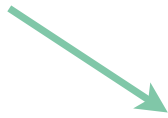
Operation (Cont'd)

Enter IS_SPAM in Filter name, click Subject drop down, and Customize...



Operation (Cont'd)

Type X-PURIFY-RATING here, and click Add, then click Ok.



Operation (Cont'd)

Now select the new header that you just defined, Contains, and type SPAM here.

Filter Rules

Filter name: IS_SPAM

For incoming messages that:

☐ Match all of the following ☒ Match any of the following

X-PURIFY-RATING	contains	SPAM
-----------------	----------	------

More Fewer

Perform these actions:

<input checked="" type="checkbox"/> Move to folder:	Trash on Local Folders	New Folder...
<input type="checkbox"/> Copy to folder:	Local Folders	New Folder...

OK Cancel

Perform the following action, move to Trash, or take any other action that you like.

Operation (Cont'd)

If you are using Purify's spam reporting feature, you can choose to ignore the abuse responses, and occasional bounces by defining your rule like so...

Filter Rules

Filter name:

For incoming messages that:

☐ Match all of the following ☒ Match any of the following

X-PURIFY-RATING	contains	IGNORE
-----------------	----------	--------

Perform these actions:

<input checked="" type="checkbox"/> Move to folder:	Trash on Local Folders	<input type="button" value="New Folder..."/>
<input type="checkbox"/> Copy to folder:	Local Folders	<input type="button" value="New Folder..."/>

Questions?

Email tech support using the contact links on our web site www.hendricom.com.

Visit the hsc message board, users helping users. www.hendricom.com

Call us: 703-499-6004

Please note: calling should be a last resort, after you've read the manual, and tried the message board.

Addendum 2.0 Features

General Preferences

General Accounts Whitelist Blacklist Ignorelist Country Jeffrian Report Compass

Training

- ☐ Collect Email For Training Off
- Remove Deleted Training Messages
- ☐ Email Containing Images Must Be Friend Off
- ☐ Move Messages Trained As Bad To Reporting Off
- ☐ Add Trained As Good To Friends Off

Reporting

- ☐ Collect Email For Reporting Off
- Remove Deleted Abuse Reports

Forwarding

- ☐ Forward Valid Email To iPhone On
- Forward To Email Address SMTP Port 25
- Remove Deleted Forwarded Messages

Settings

- Compress Database
- ☐ Debug Log Off
- ☐ Prompt Before Exit Off
- ☐ Obfuscated Word Is Spam Off
- ☐ Enforce Country Filter For URLs Off

Message Size Threshold: 1000000

HTTP Port: 80

Forward Email That Is To: [Empty Field]

Turn this on to move messages trained as "bad" to reporting.

Turn this on to add messages trained as "good" to friends.

Turn this on to treat obfuscated words like v l a g r @ as spam.

Set this size to allow large messages through without rating.

Turn this on to enforce country filter for embedded URIs.

Addendum 2.0 Features

