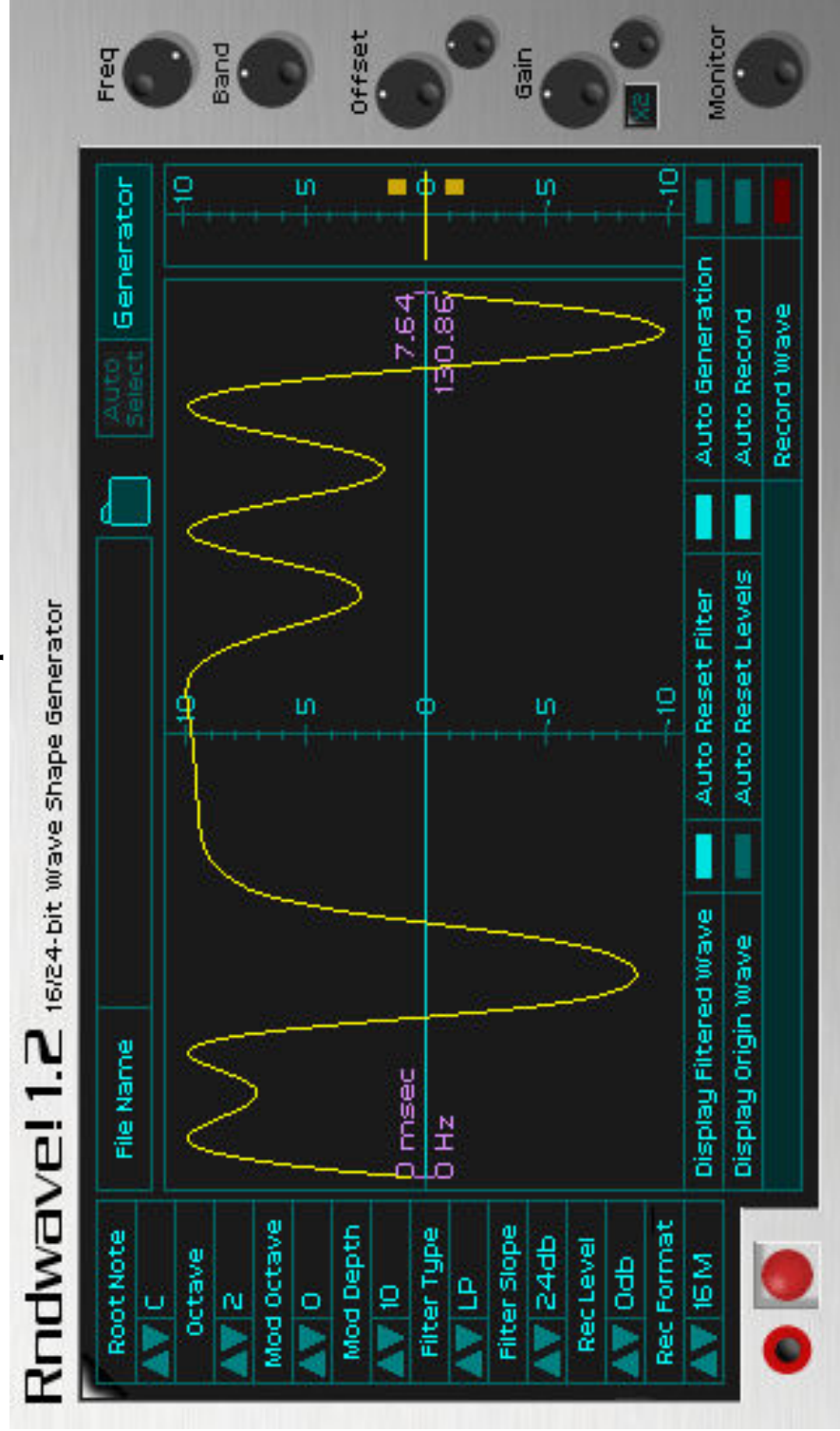
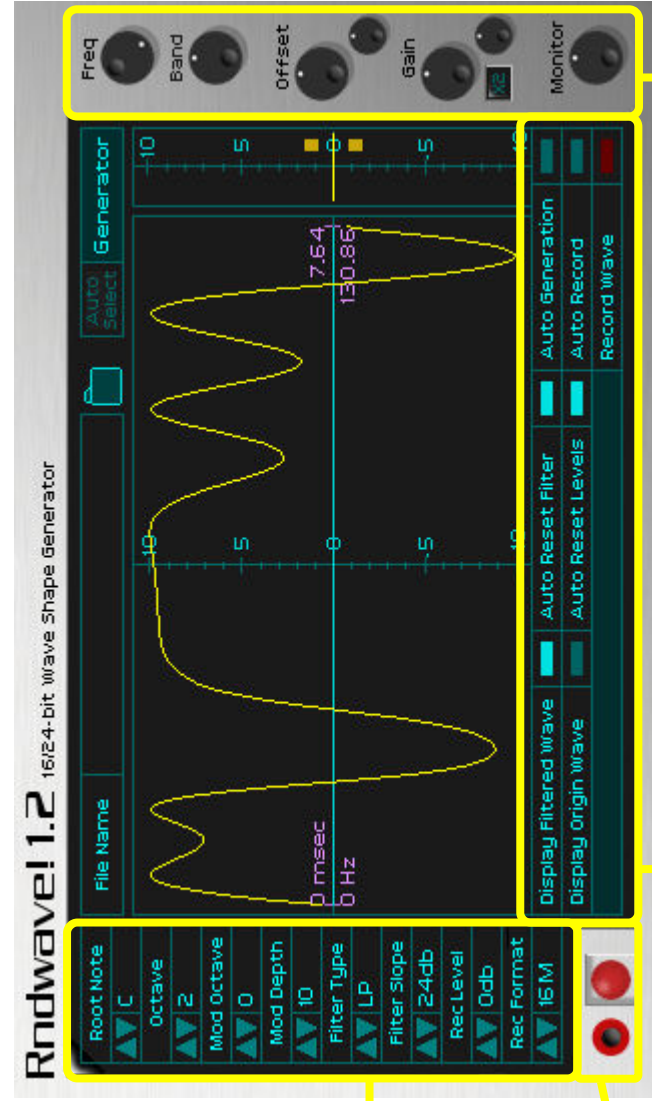


Rndwave! 1.2

16/24-bit Wave Shape Generator



Generator Controls



ROOT NOTE - This sets the fundamental note for the generated wave shape.
OCTAVE - Used to set the Root Notes MIDI octave value (ranges from -1 to 3).
MOD OCTAVE - Used to adjust the modulators octave value. 0=same octave as Root Note.
MOD DEPTH - Controls the maximum possible random modulation depth. 20 levels.
FILTER TYPE - Select from Low Pass and Band Pass.
FILTER SLOPE - Determines the filters cut off slope (12db / 24db / 36db / 48db).
REC LEVEL - Used to adjust the Recording Level (0db / -3db / -6db / -12db / -20db).
REC FORMAT - Select between 16-bit Mono/Stereo and 24-bit Mono/Stereo recording.

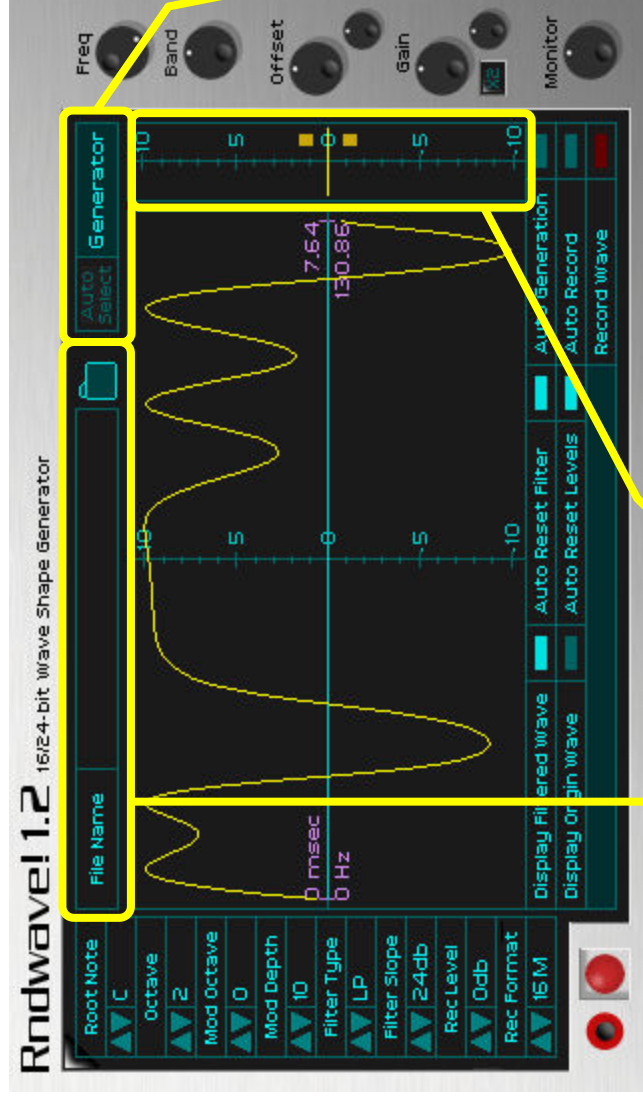
BLACK BUTTON with RED SURROUND - Toggles generator On/Off.
LARGE RED BUTTON - Manual wave generation switch.

All Rotary Controls can be reset to their default positions by clicking on their labels

DISPLAY FILTERED WAVE - Toggles the Filtered wave display On/Off.
DISPLAY ORIGIN WAVE - As above for the Unfiltered Origin wave
AUTO RESET FILTER - Allows the Filter controls to be automatically resets when generating a new wave.
AUTO RESET LEVELS - Automatically resets the Offset and Gain controls.
AUTO GENERATION - Makes Rndwave! generate a new wave shape every few seconds.
AUTO RECORD - When active, selecting 'Auto Generation' will generate and record a new wave shape every few seconds.
RECORD WAVE - Manual Recording switch: Click to start recording, Red LED goes out once recording has finished. Note: Also lights in Auto Generation Record mode.

FREQ - Adjusts the frequency setting of the filter. NOTE: Resetting the filter to its default position in Bandpass mode sets the frequency of the filter to the root notes fundamental frequency. In LP it sets the frequency to its highest frequency (about 14k).
BAND - Adjusts the bandwidth of the filter. When changing between LP and BP reset the bandwidth control to its default position, this ensures the filter is set to its optimum position.
OFFSET - Used to centre the wave. Large rotary knob - Coarse adjustment. Small rotary knob - Fine adjustment
GAIN - Used to set the gain of the wave. The gain controls act in the same way as those for the Offset adjustment.
X2 - Doubles the available adjustment range of the Gain controls.
[For adjustment of the Offset and Gain controls see below]
MONITOR - Generator Monitor volume control.

Generator Controls [cont]

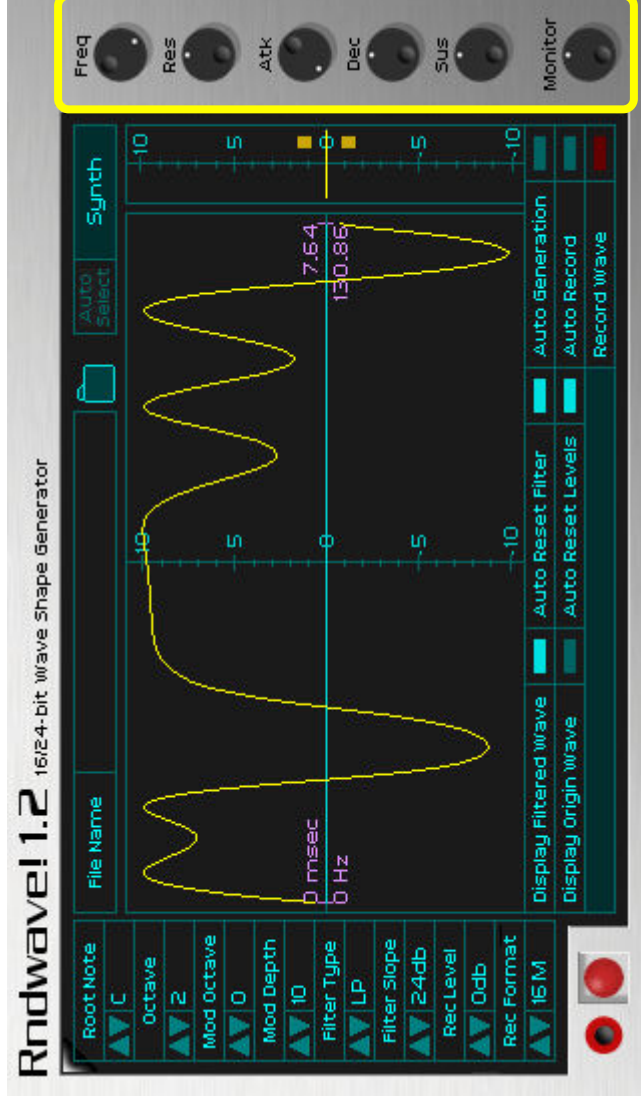


FILE NAME - Standard format file selector and file name / path entry controls. Also used to reload saved .wav files for auditioning using the internal synth.

CALIBRATION DISPLAY - Used as a visual reference when adjusting the offset and gain of a wave shape. See below.

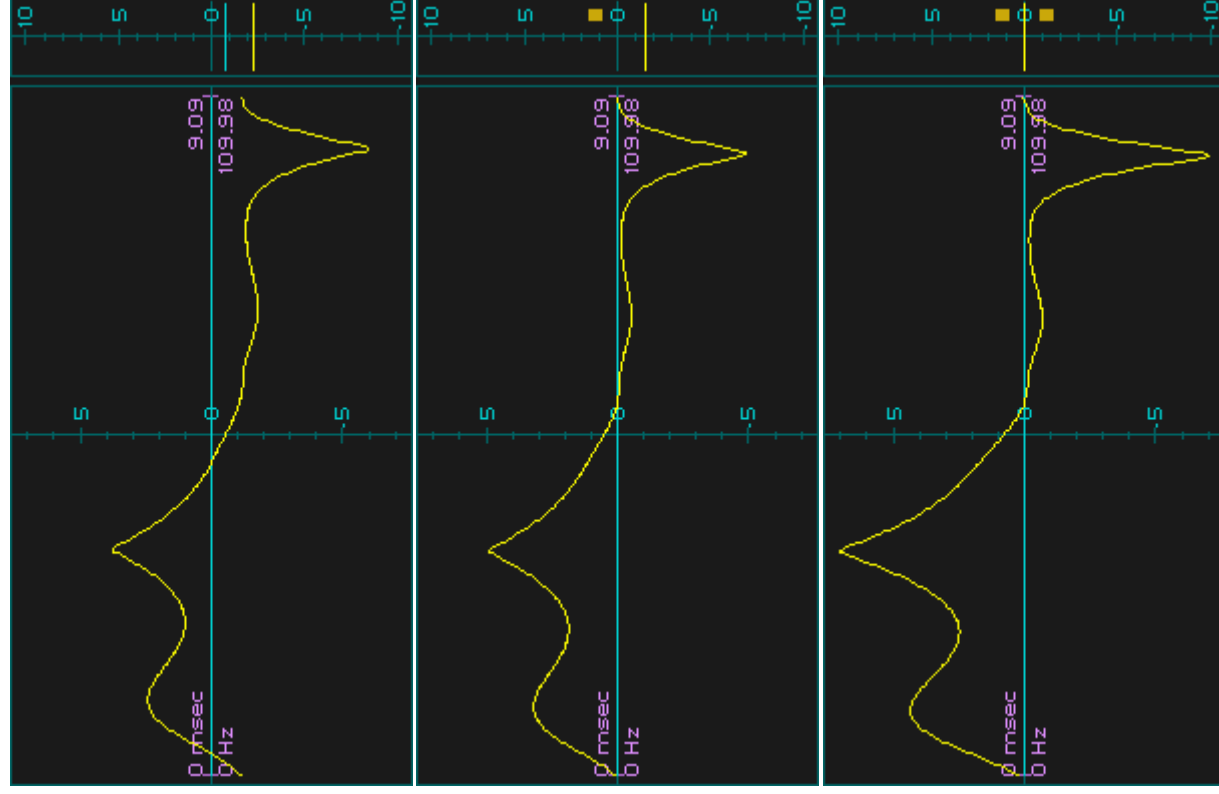
AUTO SELECT - When on, Auto Select will switch to the built in synth on receiving a note-on instruction from a MIDI keyboard, this removes the need to manually switch between the synth and generator to audition a saved wave shape. The synth remains active all the time the module is receiving MIDI note data and returns to the generator if no data is received for a few seconds.
GENERATOR / SYNTH - Manual generator / synth switch.

Synth Controls



FREQ - Adjusts the frequency setting of the filter.
RES - Adjusts the resonance of the filter.
ATTACK - Used to adjust the amplifier envelope attack rate.
DEC - Adjusts the decay/release rate of the envelope.
SUS - Sets the sustain level of the envelope.
MONITOR - Synth Monitor volume control.
NOTE: A wave shape can only be auditioned after it has been recorded.
NOTE2: The synth is tuned to the root note and octave of the generator. In order for the synth to playback at the correct pitch the root note and octave values of the generator must match that of the recorded .wav file

Adjusting Offset and Gain Controls



OFFSET CONTROLS

First adjust the offset. To do this check the calibration display, if the yellow offset indicator line is below the blue indicator (as shown) increase the level of the offset controls. Decrease the level if the blue indicator is below the yellow.

Note: Adjust the offset and gain controls slowly to give the indicators time to settle.

OFFSET CONTROLS cont

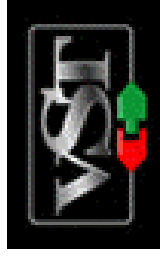
Adjust the coarse/fine offset controls until the yellow and blue indicators align and the orange LED above the '0' point lights up (the yellow indicator line will cover the blue when perfectly aligned).

GAIN CONTROLS

Once the offset alignment is completed, adjust the gain controls to align the yellow indicator with the '0' point line and to light the orange LED below the '0' point. If the range of the controls is insufficient to complete the adjustment, select the 'X2' button.

Note: The yellow indicator must be on or below the '0' point otherwise the recording will be over the selected record level.

Credits



VST Plug-In Technology by
Steinberg.
www.steinberg.net



Created using **SynthEdit** by

Jeff McClintock

jef@synthedit.com

and modules by

David Haupt:

dave@dehaupt.com

Chris Kerry:

www.chriskerry.f9.co.uk

Lance Putnum:

www.uweb.ucsb.edu/%7Eliputnam/synthedit.html

Etric Van Mayer:

www.sinte-virtual.com/evmsynths

Oli Larkin:

www.oli.adbe.org

Rob Herder:

<http://www.rh-modules.nl/>

and Dan Worrall

Quick Update for Previous Users: Apart from a few graphic changes and the internal modifications to the modulation engine, RndWave!1.2 is operationally identical to version 1.1.

Any comments, problems, suggestions, large quantities of unwanted cash or phone numbers of unattached female millionaires to: sonicassault@ntlworld.com

Now the bit to keep the lawyers off me back.

This program is FREE; it cost zilch, nothing, not a penny, a dime, a euro. Therefore, You use it at your own risk. Because if you think your gonna shove your self-serving capitalist laws down my throat if something goes wrong, think again. It ain't gonna happen. A friendly word of advise though, as this plug-in is capable of producing some speaker damaging frequencies and levels, as are a lot of effect and synth plug-ins, keep the volume DOWN whilst experimenting with this, or any other plug-in. Alternatively, use someone else's speakers! (Snigger, Snigger... Only kidding).

Thanks to: Jeff McClintock (Creator of SynthEdit), David Haupt, Chris Kerry, Lance Putnum, Dan Worrell, Etric Van Mayer, Oli Larkin, Rob Herder (For some well useful modules) and all the developers involved in SynthEdit.

Jez