

**Readme for Swift Software's Router Backup**  
**Version 0.9 © 2005**

# **Table of Contents**

## **I. License**

## **II. Overview**

- a. What is Swift Software's Router Backup?
- b. Swift Software, Inc. Company Overview.
- c. Products
- d. Custom Solutions

## **III. Setup**

- a. Opening the program in graphical mode.
- b. Creating a private key.
- c. Saving a configuration.

## **IV. The Graphical Interface**

- a. Adding routers.
- b. Backing up all routers.
- c. Backing up one router.
- d. Deleting routers.
- e. Editing routers.
- f. Removing old router configuration files.

## **V. The Command Line Interface**

- a. Switches
- b. Backing up all routers from the command line.

## **License**

Swift Software's Router Backup License

-----

You are free to use this program for academic, corporate, or personal use.  
This program is provided "as is" with no warranties, expressed or implied.

-----

<http://www.swiftsoftware.com>

Swift Software's Router Backup version 0.9 © 2005

## **Overview**

### **I. What is Swift Software's Router Backup?**

This router backup tool was developed to make backing up Cisco routers easy to do. It's a standalone application that can be configured from a graphical user interface and then run as a scheduled task.

### **II. Swift Software, Inc. Company Overview.**

Swift Software, Inc. was initially developed as a service that Swift Systems, Inc. provided for its customers. Swift Systems, Inc. has been in the Internet Services business since early 1998 and has been growing at an accelerated rate. Swift Systems provides Internet Services, Collocation, Remote Backup, and Network/Systems Design, Review, and Management.

Swift Software, Inc. developed and expanded so quickly it became its own company in January 2004. Swift Software, Inc. produces both in-house branded applications for direct sale and components/tools for other developers to embed and administrators to use.

### **III. Products**

MIDAS COMMERCE, our robust and feature rich in-house built electronic-commerce, catalog, and order management application is in production as a Swift Systems hosted-application and is taking orders for Swift Systems' customers today. Midas is designed for both the Business-to-Business and Retail sales channels. Midas is built in a modular N-Tier fashion on Microsoft Technologies including COM, Visual Basic, C++, SQL Server, and Active Server Pages. With sophisticated product and catalog management features built in, MIDAS Commerce engine provides businesses with a real turn-key solution for taking their business to the Internet.

JobTraQ is our multi-tiered self-service information system for the efficient managing of help desk or service business tickets, work orders, issues, or internal tasks. This easy to use tool helps automate task-tracking for busy organizations and gives their customers or end users access to real-time status and other pertinent information while securing "internal view only" notes, comments, and status points on those same tickets. Intuitive features such as task delegation, email notifications, and reminders make this the choice for service teams of all sizes.

### **IV. Custom Solutions**

Swift Software, Inc. has developed custom applications for our customers that include Purchase Order management and Order Entry for customers, Quality Control Automation, Available to Promise (ATP) calculation, Graphical Purchasing History Analysis, and more.

## Setup

### **I. Opening the program in graphical mode**

There are two ways of opening the program in graphical mode. The first is to just double-click on the application from Windows' Explorer. The other is to execute the program from the command line with the "/gui" switch.

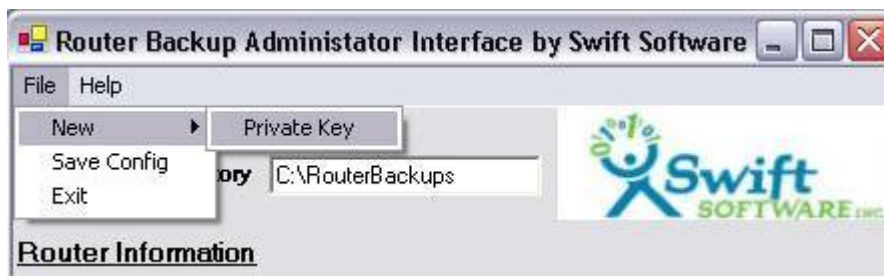
#### **Example:**

RouterBackup.exe /gui

### **II. Creating a private Key**

A private key is used to store your router passwords in an encrypted method. Without a private key you cannot save or backup any routers. To create a private key you need to first open up the application in graphical mode.

Now go to File -> New -> Private Key



Follow the onscreen instructions and a private key will be generated and stored on your computer. This key is VERY important for two reasons.

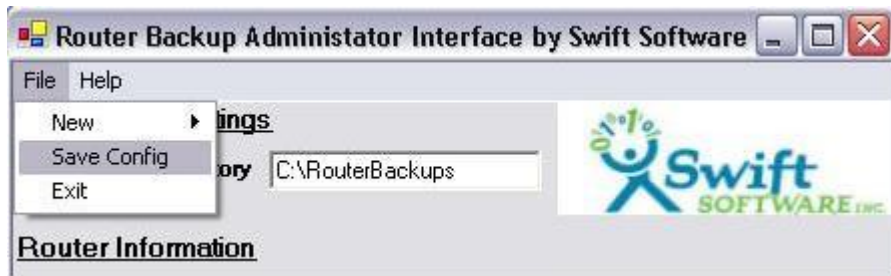
First, if anyone ever gets a hold of this key it would make decrypting your router passwords much easier.

Secondly, if you ever need to transfer your configuration to another machine, your private key MUST go with it, or else the new machine will not know how to read the encrypted passwords of each router.

### **III. Saving a configuration file**

Your configuration file contains information such as where to store the backups of each router and which routers to backup (e.g. their IP addresses and passwords). To save a new configuration file you must first decide where you would like to store your backups. Enter in a directory path into the textbox labeled **Backup Directory**.

Now go to File -> Save Config



You are now ready to start saving information about each router to backup. Please continue on to **The Graphical Interface** in this manual.

Anytime you make changes to the application (e.g. Add a router, delete a router, change the backup location, etc...) you must save the configuration if you want the change to be available when you re-open the application.

# The Graphical Interface

## **I. Adding routers**

To add a router, make sure you have followed the instructions in the “Getting Started” section.

Adding routers is quite easy. There are four fields you must populate.

The fields are:

- Router IP Address (or hostname).
- Router’s login password.
- Router’s enable password.
- The file to save it to.

So a completed entry would look like this. Note that the file name of the router is auto-populated. You should probably leave it set to the default.

Router Backup Administrator Interface by Swift Software

File Help

**Application Settings**

Backup Directory: C:\RouterBackups

**Router Information**

Router Address: 192.168.1.1

Logon Password: [REDACTED]

Enable Password: [REDACTED]

Backup Name: 192-168-1-1.conf

Save Router

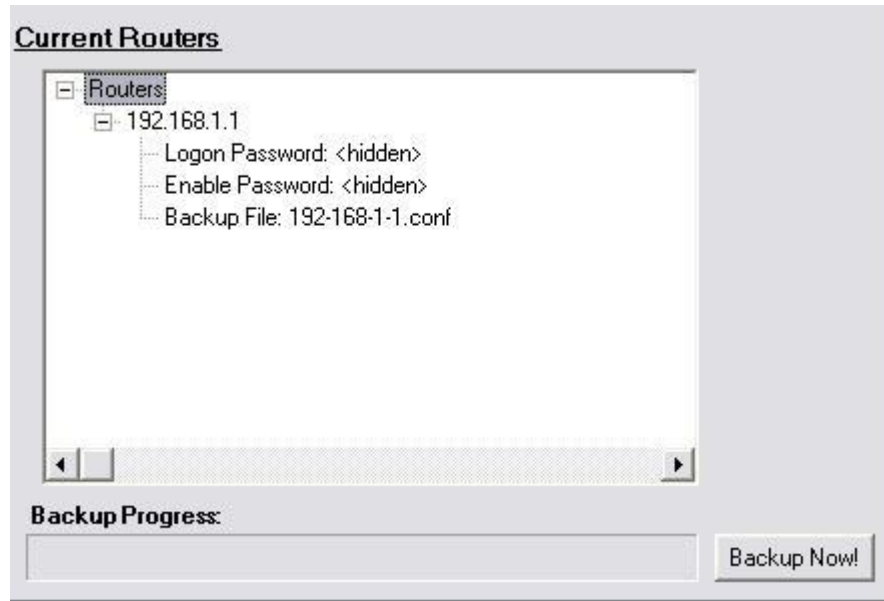
**Current Routers**

Routers

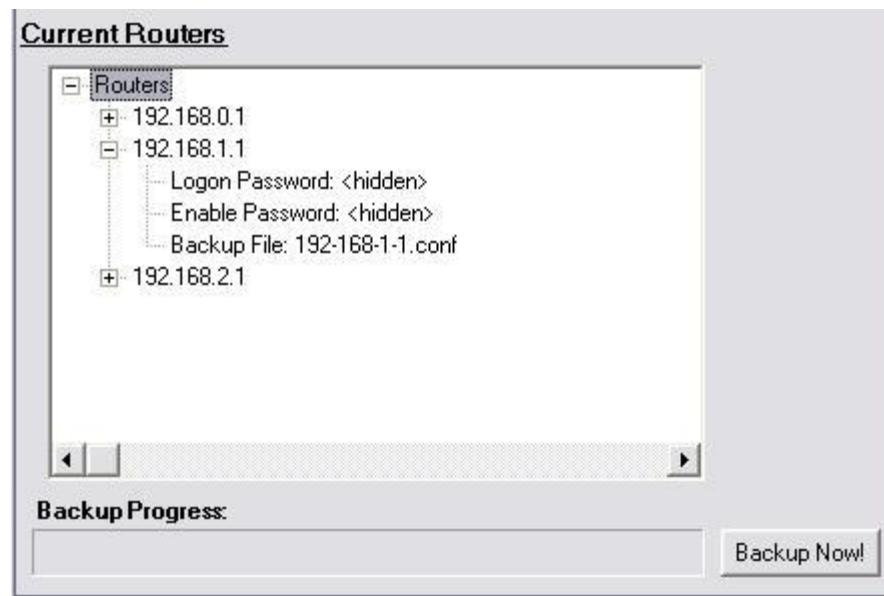
Backup Progress:

Backup Now!

After you are done entering this information, click the **Save Router** button. This will put the router into the **Current Routers** tree.



If you have multiple routers saved, the tree will contain an entry for each router. Clicking on the plus sign by each router will give you detailed information about that router.



**Note well:** Anytime you make changes to the application (e.g. Add a router, delete a router, change the backup location, etc...) you must save the configuration if you want the change to be available when you re-open the application.



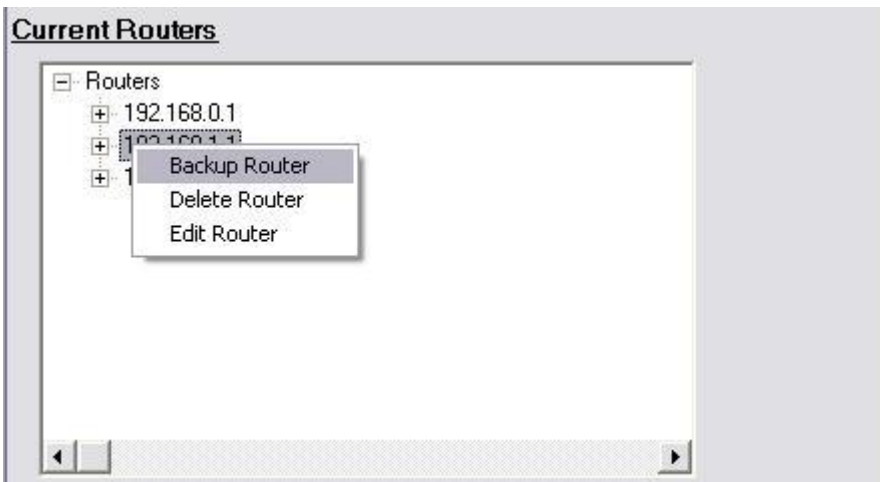
## II. Backing up all routers

To backup all the routers, you must first have at least one router in the **Current Router** tree. Now click the **Backup Now!** button at the bottom left corner. The progress bar will show you the progress of the current router being backed up. Above the progress bar you can see which router is currently being backed up.



## III. Backing up one router

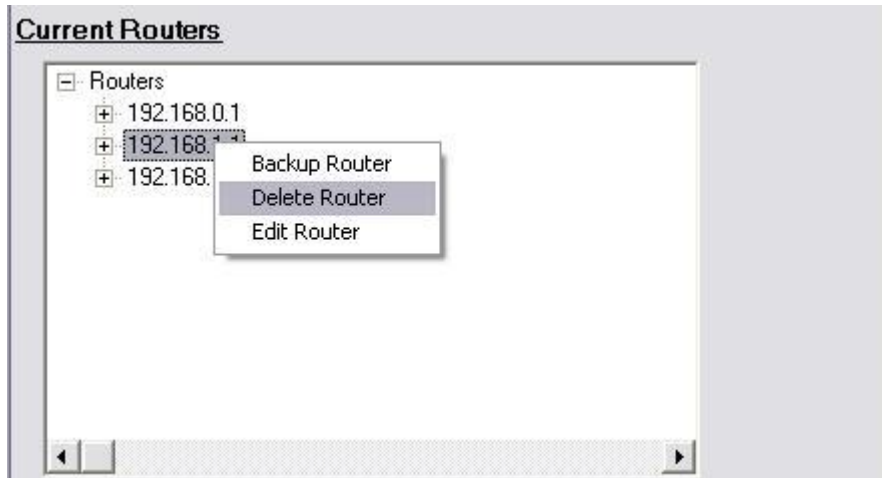
To backup only one router, right click on that router's name in the **Current Routers** tree and select **Backup Router**.



This will only backup that one router, rather than all routers in your list.

## IV. Deleting routers

To delete a router from your list, right click on that router's name in the **Current Routers** tree and select **Delete Router**.

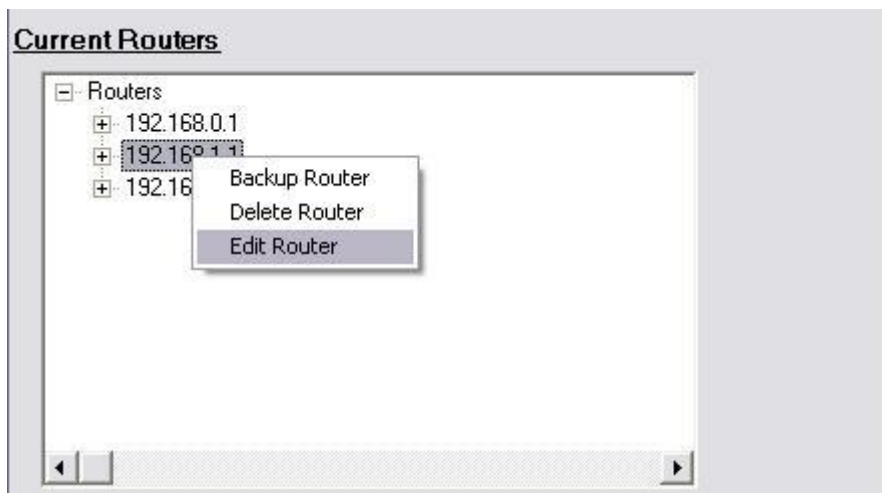


This will delete that router from the list. This change will only be saved if you choose to save your configuration.

**Note well:** Anytime you make changes to the application (e.g. Add a router, delete a router, change the backup location, etc...) you must save the configuration if you want the change to be available when you re-open the application.

## V. Editing routers

To edit a router from your list, right click on that router's name in the **Current Routers** tree and select **Edit Router**.



This will put all of the selected router's information in the text boxes above. You can edit anything about this router other than its hostname. To save the new information, be sure to click the **Save Router** button.

**Note well:** Anytime you make changes to the application (e.g. Add a router, delete a router, change the backup location, etc...) you must save the configuration if you want the change to be available when you re-open the application.

## VI. Removing Old Router Configuration Files

You can configure the program to automatically check for stored backups of your router configuration files and remove them if they are older than X days. To do this click on the “Options” menu and select “Delete Backups older...”



The default option is to never delete a backup. Below that are some commonly used options. If you would let to set a custom timeframe click the “...custom” option. After clicking the custom option, another window will open.



Here you can enter a value and select a time interval on the right. After inputting your desired time interval, click “OK”.

## **VII. The Command Line Interface**

### **I. Switches**

Here is a list of the available command line switches.

/backup Reads the stored configuration and backups all routers.  
/gui Starts the program in the graphics mode.  
/? Prints a help message.

#### **Example:**

RouterBackup.exe /backup

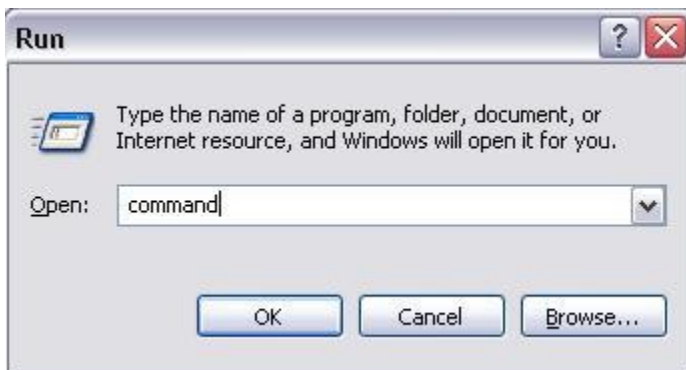
This would read the current configuration file and backup all routers. The backups would be stored in your selected backup directory you configured in the GUI interface.

### **II. Backing up all routers from the command line**


To backup all the routers in your configuration open up a command line by going to:

Start -> Run.

Type “command” and press **OK**.



After that a DOS window will open up. Inside the DOS window type in the full path to the RouterBackup.exe and append a “/backup”. The command should look like this:



```
C:\WINDOWS\system32\command.com

C:\>"D:\SwiftSoftware\SwiftSystems\Router Backup\CommandLine Interface\bin\Debug\RouterBackup.exe" /backup_
```

Hit enter and you should see it listing a progress report of its backup.



```
C:\WINDOWS\system32\command.com

C:\>"D:\SwiftSoftware\SwiftSystems\Router Backup\CommandLine Interface\bin\Debug\RouterBackup.exe" /backup
"Router Backup" version 0.9 is provided "as is",
with no warranties, expressed or implied.
http://www.swiftsoftware.com

Swift Software's "Router Backup" version 0.9 c 2005

Starting Router Backups...
Backing up (1/3)...
```

Once you have the command line working, you can put it into a scheduled task to be executed as often as you need to backup your routers.