

Samsung HSPA Modem Update Guide

V 1.0

April 03, 2009

**Follow the instructions in this guide to update firmware and software
for Samsung HSPA modem**

Update Version

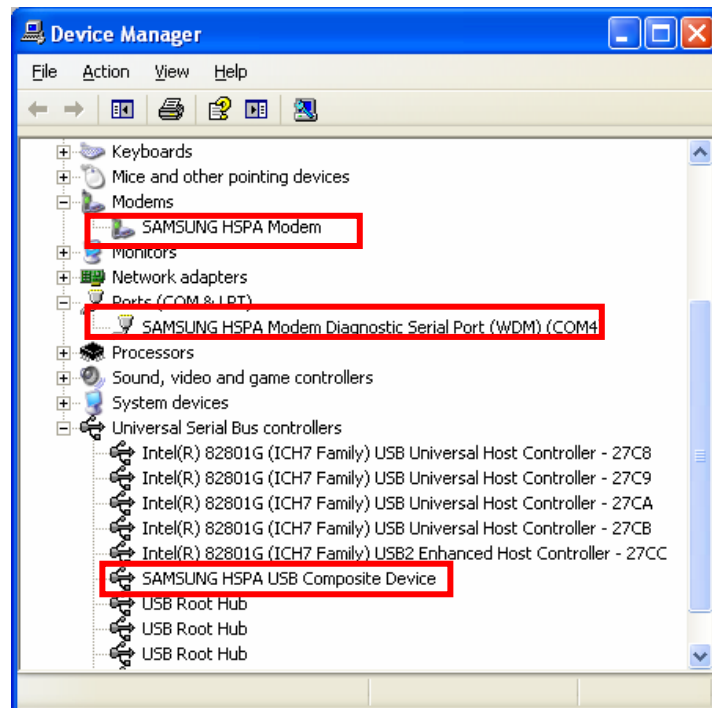
Samsung Connection Manager: 1.6.8.0103

Firmware: Y3100XXIC2

I. Before Starting Update

1. Firmware upgrade will not start if AC adapter is not connected.
2. Please do not power down system during the update because Samsung HSPA modem may be permanently damaged.
3. Samsung HSPA modem driver should be installed prior to updating the firmware.

You can check the driver installation status as shown in Figure-1 by going to device manager.



(Figure-1: Driver installation status)

If the driver is not installed in your system, please refer to page 3 of this manual to install **Samsung Connection Manager**.

II. Remove Old Samsung Connection Manager

1. Go to **Start > Control Panel > Add or Remove Programs**.
2. Select **Connection Manager** and click on **Remove** button.
3. Follow the instructions to remove the software.

III. Install New Samsung Connection Manager

1. Go to **Software** folder located in the downloaded update package and double click on **CMSetup.exe**.
2. Follow the instructions to install new software.

IV. Install New Firmware

1. Go to **Firmware** folder located in the downloaded update package and double click on **FMUpgrade.exe** to run firmware update utility.



(Figure-2: Firmware Upgrade main window, Current Version may differ)

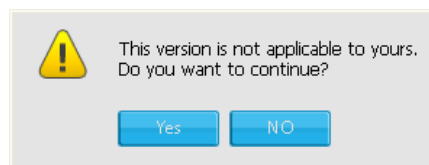
2. New firmware binary file, **Y3100XXIC2.bin** will be selected automatically.

If not, browse and select new binary file, **Y3100 XXIC2.bin**.

3. Select **Upgrade** button.

<Note>

The following warning message appears in case your firmware version does not match with the new one.



(Figure-3: Version check pop-up window)

Please check if you have downloaded proper package and continue with update by selecting **Yes** button. If you select **No**, upgrade will not start.

4. Wait for update to finish. (Update may take up to 2 minutes)

5. Click on “Exit” button to close the utility.



(Figure-4: Update complete window)

V. Verify Update

1. Double click on **Connection Manager** desktop icon to launch **Samsung Connection Manager**.
2. Click on **i** button from the main window.



(Figure-5: Samsung Connection Manager main window)

3. Check if update was done correctly:

S/W Version: **Y3100XXIC2**

CM Version: **v1.6.8.0103**



(Figure-6: About Samsung Connection Manager window)