

SCOM Scheduling Manager (SSM)

Supported SCOM versions: SCOM 2012, SCOM 2012 SP1

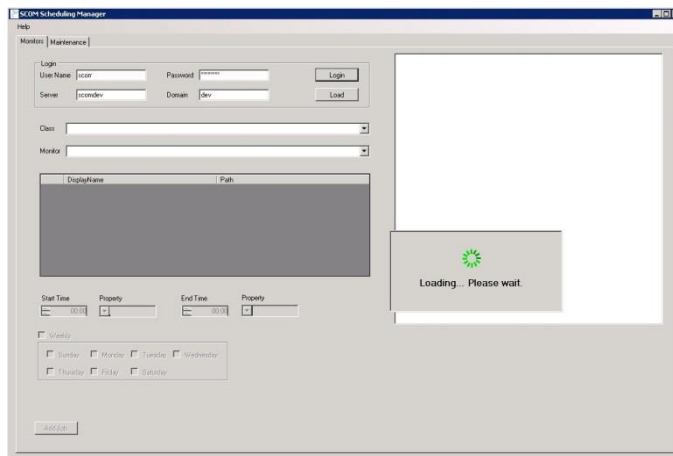
Summary: The SSM gives you the ability to define a future override on the "Enable/Disable" parameter for a monitor, now you can set a "scheduler" for your monitors.

1. Directory Files:

SMM.exe
SMM.exe.config
JobsHandler.exe
JobsHandler.exe.config
log4net.xml
log4net.dll
Microsoft.EnterpriseManagement.Runtime.dll
Microsoft.EnterpriseManagement.Core.dll
Microsoft.EnterpriseManagement.OperationsManager.dll

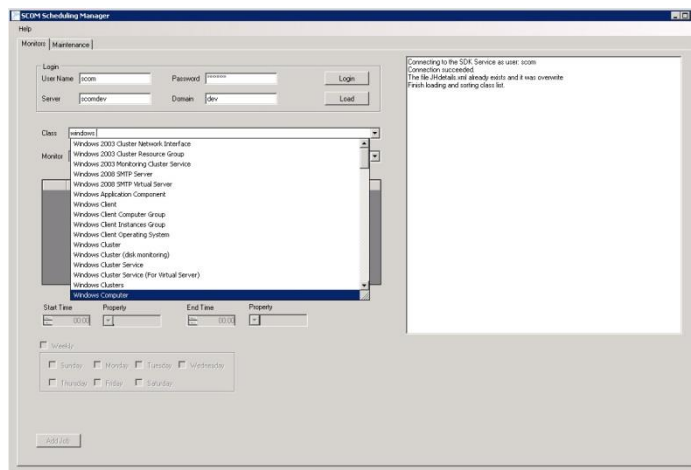
2. Work with SSM

- 2.1. Open SSM tool and enter your user name, password, IP address or server name (of your SCOM server) and the domain.
- 2.2. Press login button.

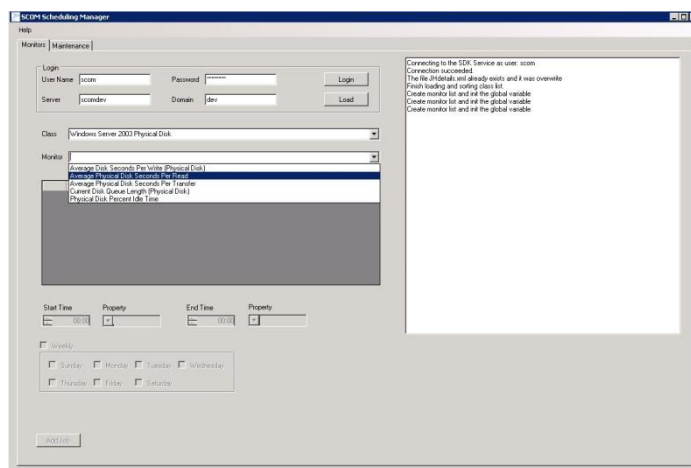


- If the login process was successful the SMM will create automatically a file called "JHdetails.xml" which contains the login details for the service.
- You can also press on the Load button to load the data from the "JHdetails.xml" file.

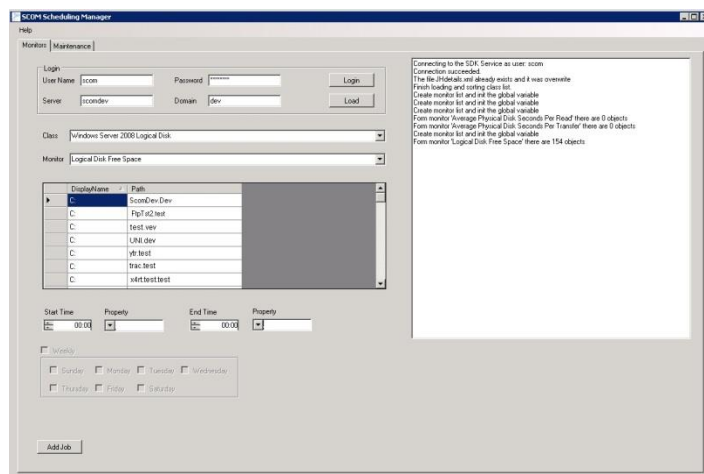
2.3. Select your monitor class.



2.4. Select a monitor (followed by the selected class)



2.5. Select Monitor Object



After you select a monitor object the time area will be enable to edit

2.6. Enter the "Start time", "End time", value between times and the value outside times.

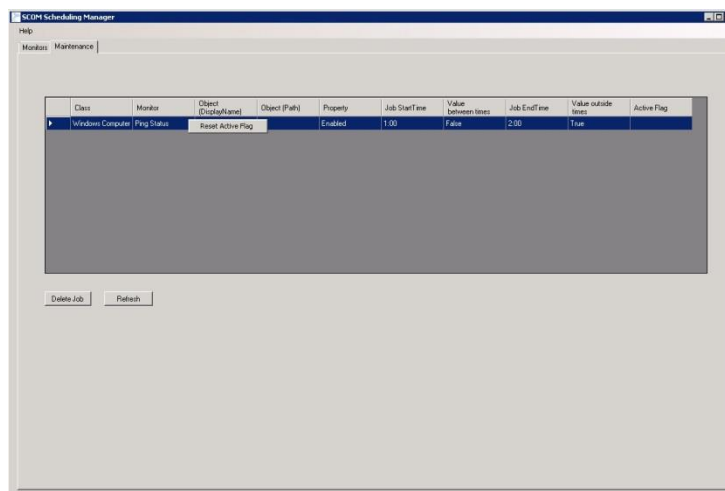
2.7. Press on the button "Add Job".

2.7.1. After adding a job you will automatically redirect to the jobs tab.



In the jobs window you can see and delete all active jobs.

2.8. Reset Active Flag- will execute the job again.



3. Installing Service

The jobs handler is a windows service so there is a need to install it

Go to SSM directory and open it the CMD window.

run the command:

JobsHandler -install

now you should see a new service called "SCOM Scheduling Manager – Jobs Handler".

you can start the service and look at the log in the Log directory "JobsHandler.log" to see if the connection is ok.

IMPORTANT!

The service use the JHDetails.xml file to login so keep in mind you can run the service after you login successfully from the SMM.

4. Features:

- 4.1. Enable or Disable monitors (for class instance) in a future time.
- 4.2. Managing all scheduled jobs.
- 4.3. Active the job manually

5. Future Features:

- 5.1. Weekly jobs
- 5.2. Roles managing
- 5.3. Manage more parameters on the override