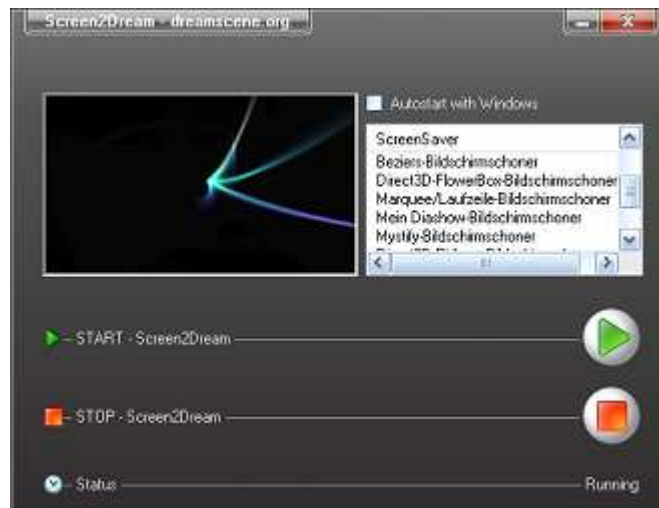


**Screen2Dream © Copyright dreamscene.org - all rights reserved**

### Description:

Use Screen2Dream to run your favourite Screensaver as desktop background on Windows XP and Windows Vista.

Screen2Dream uses the desktop window handle on your PC to run a Screensaver as desktop background. Screensavers directly using the graphics card, therefore the desktop icons are hidden while Screen2Dream is running. You can select your desktop shortcuts over the system tray menu.

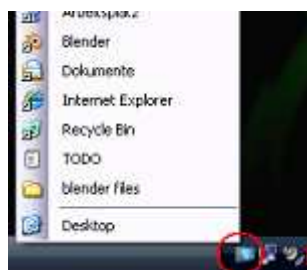


### Usage:

Run Screen2Dream,

1. select your favourite Screensaver in the List Box.
2. click on START to run your selected Screensaver as wallpaper,
3. click STOP to disable Screen2Dream and to return to normal desktop mode.

You can select your desktop shortcuts over the system tray menu while Screen2Dream is running. Double-click on the icon to show main window.



### System Requirements:

The Screen2Dream tool needs the Microsoft .NET 2.0 Framework to run correctly. To run a Screensaver as desktop background, no specific hardware requirements are needed.

### Troubleshooting:

The desktop behaviour can depend on the selected screensaver. If you encounter some problems while using Screen2Dream, try to select a different screensaver.