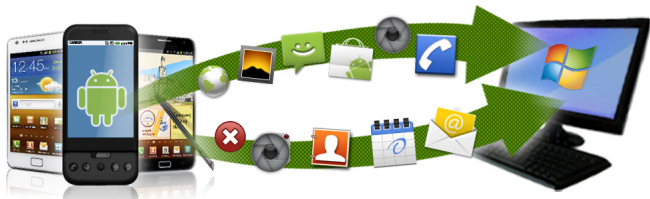


ER-241

SD Card **Recovery Pro**™

SD Card Data Recovery Software for Windows OS

Download Version User Guide



Rev. 1.0

ER-241 SD Card Recovery Pro

SD Card Data Recovery Software for Win OS



<u>Contents</u>	<u>Page</u>
Introduction	1
Features	2
System Requirements	2
Check for Updates	2
Installation and Activation	3
Main Screen	5 -8
Viewing Options	9
Export Options	10-12
USB Debugging	13-14
Help and Support	15-16

Introduction

The SD Card Recovery Pro™ is a Windows based data recovery application for all types of SD Cards, USB Flash drives and USB Hard Drives. The application will recover direct from an SD card that is inserted into an Android based device if USB debugging mode can be enabled.

Please check the user guide of your Android device to see if USB Debugging mode can be switched on, if not you can remove the SD card and connect to the PC via a USB SD Card Reader (supplied with ER-241 physical version).

ER-241 SD Card Recovery Pro

SD Card Data Recovery Software for Win OS



Features

The application allows the user to recover and export the following deleted data types :-

Videos

Photos

Audio

Documents

Archive files

Other

System Requirements

Hardware requirements

- Pentium 233 MHz or higher
- A USB SD card reader (supplied with ER-241 physical version) either internal (built into your PC/Laptop) or external USB SD Card Reader

Software requirements

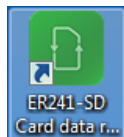
- Supports 32 bit and 64 bit versions of Windows XP, Vista, Windows 7 & 8

Check for Updates

The software may be updated from time to time. It is advisable to check for updates periodically as we will continue to update and enhance the software to ensure it works smoothly. All updates are provided free of charge for minor version changes.

ER-241 SD Card Recovery Pro

SD Card Data Recovery Software for Win OS

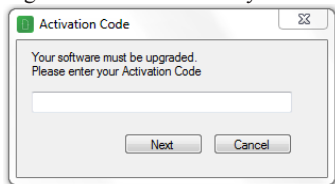


ER-241 SD Card Recovery Pro

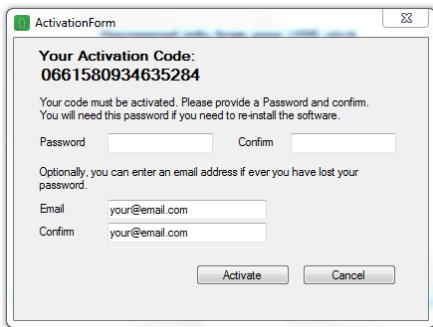
SD Card Data Recovery Software for Win OS



4. Before you can use your software you will need to enter the activation code you have purchased, below is the image of the screen where you enter your code :-



5. Below is the screen where you will enter YOUR password and YOUR email address this is to help you retrieve your code if you need it in the future.



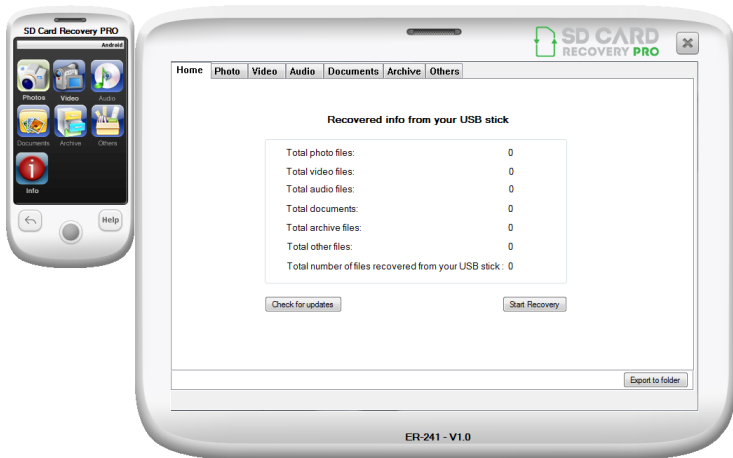
ER-241 SD Card Recovery Pro

SD Card Data Recovery Software for Win OS



MAIN SCREEN

1. Once you have completed the activation process the main screen will appear, it is advisable to click “**Check for Updates**” as there may be upgrades ready to install.



2. To start recovery of your deleted data please click the “**Start Recovery**” button.

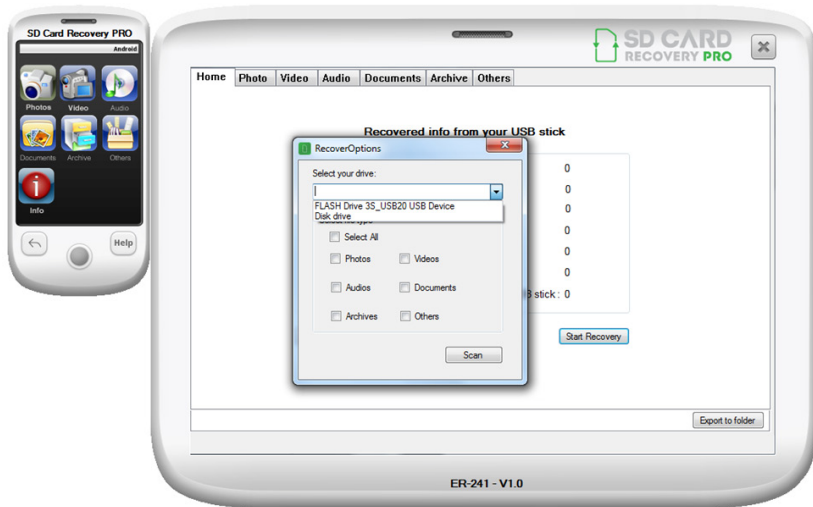
ER-241 SD Card Recovery Pro

SD Card Data Recovery Software for Win OS



3. After clicking “**Start Recovery**” a selection window will appear, in the example below there are two selectable devices, a Samsung Android handset and a USB Flash drive.

You will need to select the device you are wanting to recover from, for more help on Android devices please see the section on “USB Debugging”.



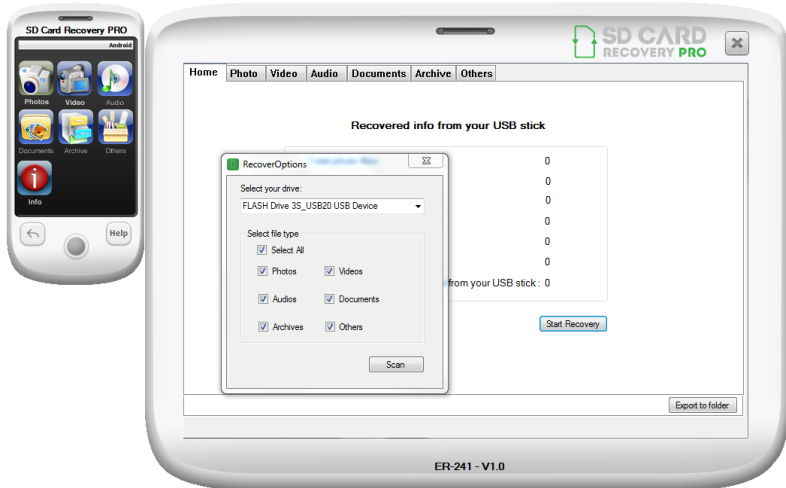
ER-241 SD Card Recovery Pro

SD Card Data Recovery Software for Win OS



4. After you have selected the device you want to recover from you will then need to select the type of files you are looking to recover. You can select all files by clicking “select All” or you can select just the specific file type by individually clicking on either Photos, Videos, Audio, Documents, Archives or Other.

Once you have made your selection please then click “Scan”. Depending upon the amount of deleted data to be recovered this can take up to or over 20 minutes.



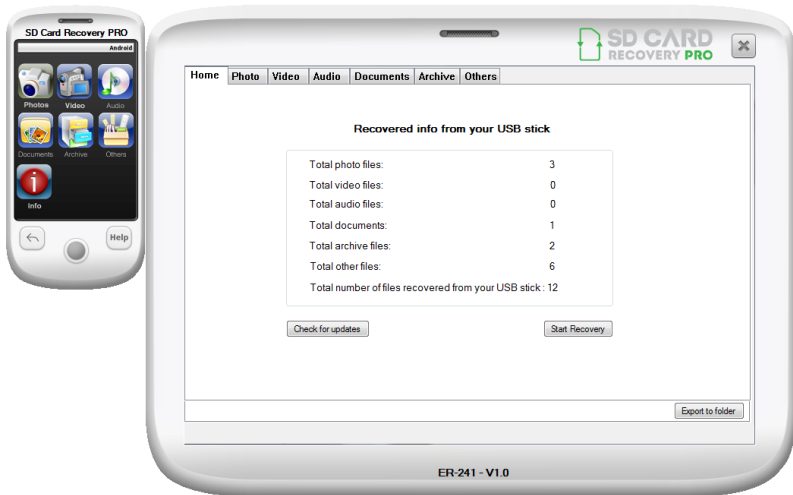
ER-241 SD Card Recovery Pro

SD Card Data Recovery Software for Win OS



5. After the software has finishing scanning for the deleted data it will display how many items it has found. The display will show the individual amounts and the total number of files.

Please remember you have to select ALL if you want to see each individual file types recovered, in the example below Documents and Archives types were not selected.



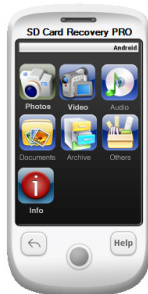
ER-241 SD Card Recovery Pro

SD Card Data Recovery Software for Win OS



VIEWING OPTIONS

1. Once the recovered items are found you can then view them in the software. Photos, Videos and Audio can be displayed or played via the software. The Documents, Archives and Other files can only be exported.



ER-241 SD Card Recovery Pro

SD Card Data Recovery Software for Win OS



EXPORT OPTIONS

1. To export your recovered files please click on “**Export to Folder**” you can then either export all the different file types onto your hard drive or other storage device.

Please be aware of how much data you are about to recover, it is advisable to export in small units by selecting using the “**Current Page Only**” option



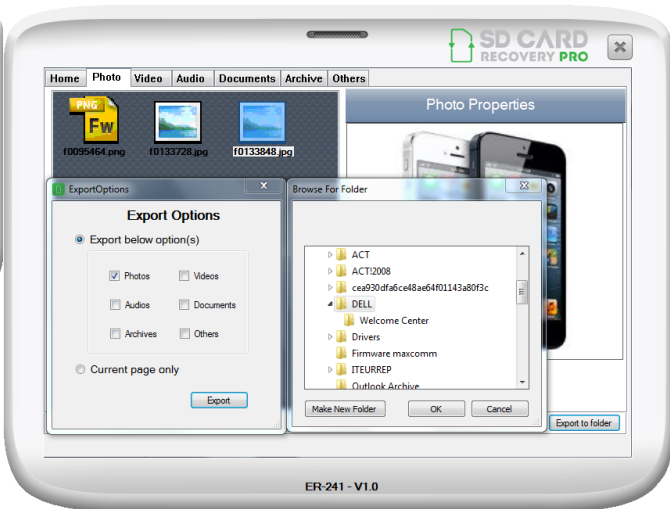
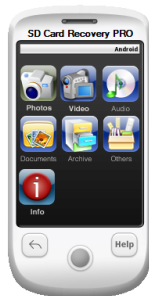
ER-241 SD Card Recovery Pro

SD Card Data Recovery Software for Win OS



2. Once you have decided which recovered files you wish to export please click “Export” and a window will appear for you to choose where to save the recovered files to.

In the example below the standard Pictures folder is being selected, but again makesure you are not exporting 100’s of photos unless you wish to, as it may be time consuming to clean that folder.



ER-241 SD Card Recovery Pro

SD Card Data Recovery Software for Win OS



3. Where there are many files to recover you can break them into small parts by selecting “**Current Page Only**”, as there may be many pages of files.

Make sure the file or files are on the page you wish to save to your PC and then click “**Export**”



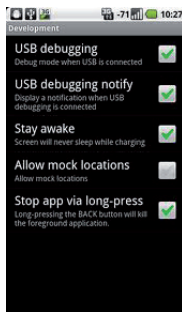
USB DEBUGGING FOR ANDROID

On your Android handset, you need to enable a setting for the connection

1. Go to Settings



2. Go to Applications, Development, check the line saying USB debugging.



3. Connect your phone to the PC using a data cable.

4. Reopen the SD Recovery Pro by double-clicking the SD icon on your desktop.

5. Your Android device must have a “**USB Debugging**” mode or you will have to remove the SD Card and insert into a USB SD Card Reader. Please check in the user guide provided with your Android device.

OTHER DEVICES

The software can also recover from any other storage devices that are connected as a mounted device, i.e. USB flash drive, USB Pen drives, USB Hard Drives, Digital Cameras, Digital Video Camcorders and many other devices.

If the software can see it as a selectable drive in the “Start Recovery” option then it will recover deleted data.

Help and Support

Help is available through the normal help menu within the software. Further information and Frequently Asked Question's (FAQ's) are available from the Enigma Recovery website.

If you have not found a solution by visiting our website, please contact us using one of the following methods:

Email Support:

Enigma Recovery provides technical support via email during the free trial period - please send your query to support@enigma-recovery.com. We will endeavour to reply to your query as quickly as possible (usually within 24 hours of receiving an email).

Online Support:

Use our online chat function available on our website to chat with a member of our technical team. Please note this service is only available between 9am-5pm Monday to Friday (GMT).

Telephone Technical Support

UK Users: 08444 772 988

International Users: +44 (0) 1373 839465

Please note this is an English speaking service only and is available between 9am-5pm Monday to Friday (GMT).

©2013 Enigma Recovery is a registered trademark of Infinity Wireless Ltd in the United Kingdom and / or other countries. Other brand and product names are trademarks or registered trademarks of their respective holders. Information is subject to change without notice. All rights reserved.

Enigma Recovery

Limited Warranty

What does this limited warranty cover?

This limited warranty covers any defects in material or workmanship in the new Enigma Recovery software. Only consumers purchasing this product with a valid activation code may obtain coverage under this limited warranty.

What does this limited warranty not cover?

This limited warranty does not cover any problem that is caused by (a) accident, abuse, neglect, shock, electrostatic discharge, heat or humidity beyond product specification; or (b) any misuse contrary to the instructions in the user manual; or (c) lost passwords; or (d) malfunctions caused by other equipment. This limited warranty does not cover data loss - backup any data to a separate medium where appropriate on a regular basis.

In no event shall Enigma Recovery be liable for any special, indirect or consequential damages or any damages whatsoever resulting from loss of use of or inability to use the software, even if Enigma Recovery has been advised of the possibility of such damages.

Refund Policy

Enigma Recovery's liability will not exceed the purchase price of the software. Due to the nature of the software, we do not offer refunds if after purchasing an activation code, you change your mind or find that the software is not suitable for your needs. It is your responsibility to use the trial period to evaluate and ensure that the software is suitable for your needs.

We may only offer a refund in circumstances where you find fault in the software. If this is the case please email refund@enigma-recovery.com with your request within 30 days of purchasing the software. Each case will be evaluated on an individual basis. We retain the right to withhold a refund at our discretion. If a refund is received, you must uninstall the software from your computer. You may not reinstall the software without purchasing another activation code.

This warranty statement does not affect your statutory rights.