

# ShutDownGUI V1.0

## 1. Introduction

ShutDownGUI is a graphical utility to power off the system when an event occurs. The most common scenario is a long calculation (e.g. a NAMD molecular dynamics) whose end is unknown and you want to shutdown your PC when it's finished.

There are three operating modes:

- **Countdown mode** (default):  
you can specify the wait time (default 60 seconds) and when the countdown arrive to 0, the system is switched off.
- **Timer mode:**  
you can power off the system at specified date and time.
- **Process mode:**  
you can attach ShutDownGUI to one or more processes to wait for their end. When all selected processes are finished, the countdown starts automatically and when it arrives to 0, the system the shutdown is performed.

You can abort the shutdown procedure in any time by clicking *Abort* button or by closing the program window.

## 2. System requirements

To run ShutDownGUI, you need a PC with Windows XP/Vista/7 x86 or x64 operating system.

## 3. Installation

No installation is required.

## 4. Usage

You can configure ShutDownGUI by command line options or by its graphic interface.

### 4.1 Configuring by command line

You can use some command line options to set and customize ShutDownGUI:

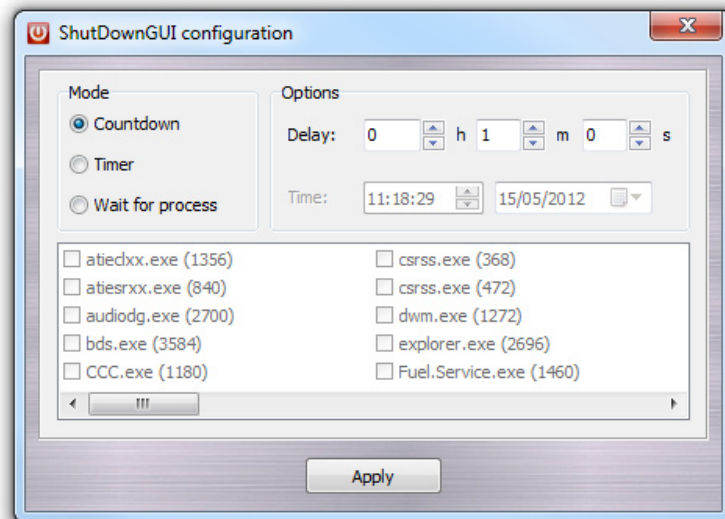
Option	Argument	Description
/BUTTON	Text	Text of abort button.
/CONFIG	-	Show the configuration dialog window.
/DATE	d/m/yyyy	Shutdown date for timer mode. This option can be used with /TIME.
/DELAY	h:m:s	Delay before the shutdown for countdown mode.
/DELAYS	sec	Same of above, but the delay is in seconds.
/HELP	-	Show the command line options.
/H		
/?		

Option	Argument	Description
/LABEL	Text	Shutdown message.
/PID	Number	ID of the process to wait. You can specify more than one ID.
/TIME	h:m:s	Shutdown time for timer mode. This option can be used with /DATE.
/TITLE	Text	Window title.

\*All options are case-insensitive.

## 4.2 Configuring by graphic interface

To show the configuration window, you must use /CONFIG option to run ShutDownGUI.



In this self-explaining dialog, you can set the operating mode (Mode box), delay, date, time and process IDs as explained above.

## 5. History

1.0

- First public release.

## 6. Copyright and disclaimers

All trademarks and software directly or indirectly referred in this document, are copyrighted from legal owners. ShutDownGUI is a freeware program and can be spread through Internet, BBS, CD-ROM and other electronic formats. The Author of this program accepts no responsibility for hardware/software damages resulting from the use of this package. No warranty is made about the software or its performance. Use and copying of this software and the preparation of derivative works based on this software are permitted, so long as the following conditions are met:

- The copyright notice and this entire notice are included intact and prominently carried on all copies and supporting documentation.
- No fees or compensation are charged for use, copies, or access to this software. You may charge a nominal distribution fee for the physical act of transferring a copy, but you may not charge for the program itself.
- Any work distributed or published that in whole or in part contains or is a derivative of this software or any part thereof is subject to the terms of this agreement. The aggregation of another unrelated program with this software or its derivative on a volume of storage or distribution medium does not bring the other program under the scope of these terms.

## **ShutDownGUI**

is a software developed in 2012  
by Alessandro Pedretti  
All rights reserved.

Alessandro Pedretti  
Dipartimento di Scienze Farmaceutiche "Pietro Pratesi"  
Università degli Studi di Milano  
Via Mangiagalli, 25  
I-20133 Milano - Italy  
Tel. +39 02 503 19332  
Fax. +39 02 503 19359  
E-Mail: [info@vegazz.net](mailto:info@vegazz.net)  
WWW: <http://www.vegazz.net>