

Smart-[X](#) Software Solutions

Duplicate SID Monitor

User guide

content table

WELCOME	3
FEATURES AND CAPABILITIES	4
REQUIREMENTS	6
INSTALLATION AND LICENSING	7
EVALUATION VERSION LIMITATION	7
INSTALLATION	8
LICENSING	11
HOW TO USE DSM	12
TOOL BAR	12
SCAN RESULTS	14
CONFIGURATION	15
SETTING SERVICE CONFIGURATION	16
Service status	18
UNINSTALL SERVICE	18
MANAGE DUPLICATE IDS	20
ENABLING IDS CHANGE	22
MORE FUNCTIONS	23
REMARKS	25



Welcome

Welcome to Smart-X.

Thank you for choosing Duplicate SIDs Monitor (DSM), one of many tools developed by the Smart-X team of experts designed to optimize your work, and help you manage your system efficiently, effortlessly and productively.

This chapter describes DSM features and capabilities, and lists additional helpful tools in the same field that can optimize your work environment.

For more tools, visit our website at www.smart-x.com.

This Chapter Contains:

- Features and Capabilities.

Features and Capabilities

Here are a number of benefits DSM has to offer:

- Instantly get a real view of duplicate Machine SIDs and WSUS IDs on your network.
- Easily generate and distribute new Machine SIDs and new WSUS IDs to remote computers with a single click.
- Easily repair problems caused by years of incorrect deployment procedures.
- Tighten security and fix one of the most common security threats in enterprise networks.

Working with DSM

This chapter contains specific instructions for working with DSM.

This Chapter Contains:

I: Requirements.

II: Installation and Licensing.

III: How to use DSM.

Requirements

- SQL 2005 Express / Standard / Enterprise edition
 - SQL authentication.
- Frame Work: Microsoft Dot Net Framework 2.0 sp1 and above.
- Administrative account:
 - Administrative privileges on all target workstations.
 - 'Logon as a service' privilege. ([Click here to see how](#))
- Domain workstations:
 - Ping reply.
 - Remote WMI.

Installation and Licensing

Evaluation version limitation

The product you have downloaded to your PC is an evaluation version. The **DSM** evaluation version has limited functionality (as detailed in the EULA).

The table below presents the comparison between the evaluation version and the full version.

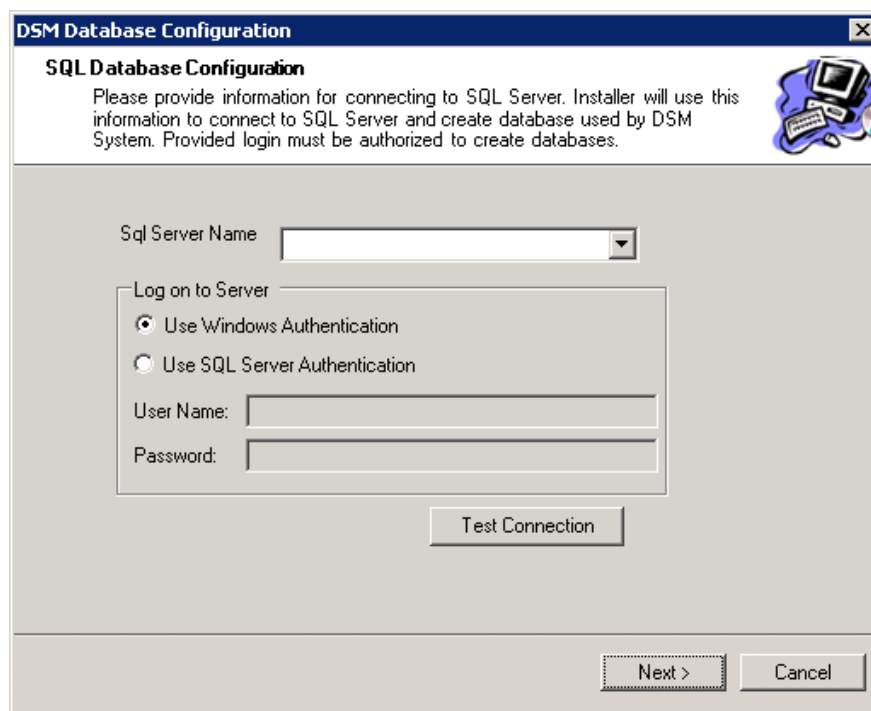
Function	Full version	Evaluation version
Duplicate IDs display	Displays all duplicate IDs found on the network.	Displays 20 duplicate IDs and notes the number duplicated
Change IDs	Enables changing of duplicated IDs remotely	Does not enable change of duplicated IDs

Installation

It is recommended to install the program on the System administrator's station.

To install DSM from a downloaded file:

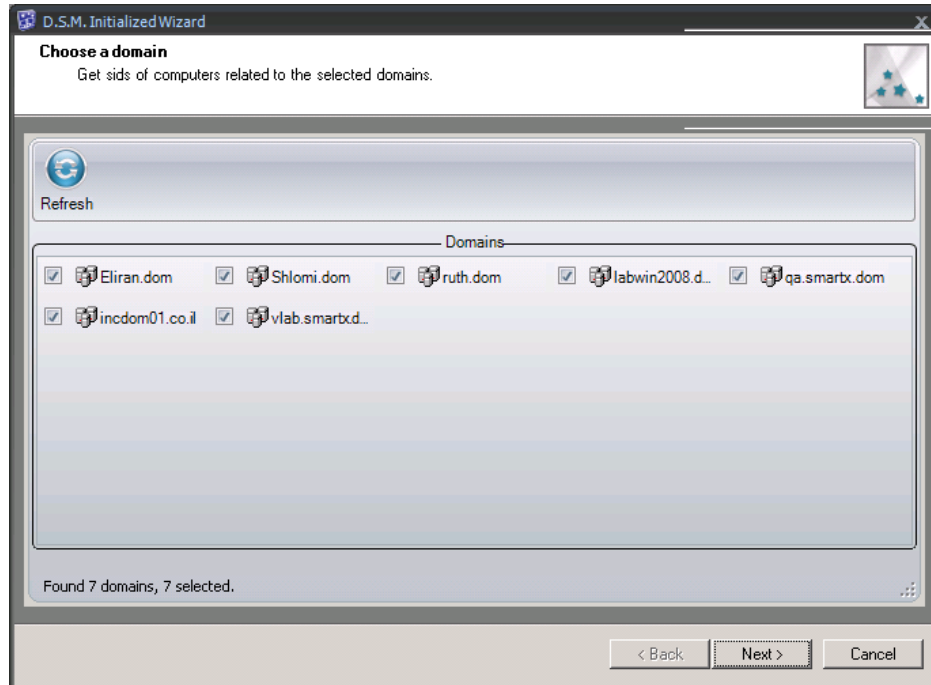
1. Double click the DSMsetup.msi file.
2. Read the program license conditions carefully.
3. Choose the directory where you wish to install DSM.
4. Follow the instructions by the Setup program displayed on the screen.
5. When you reach 'SQL Database Configuration' window:



- Choose SQL server or type the servers name in the 'Sql server Name' field.
- Define how to log on to the server.
If you choose the 'Use SQL Server Authentication' the specified user must have Sys admin wrights on the server.

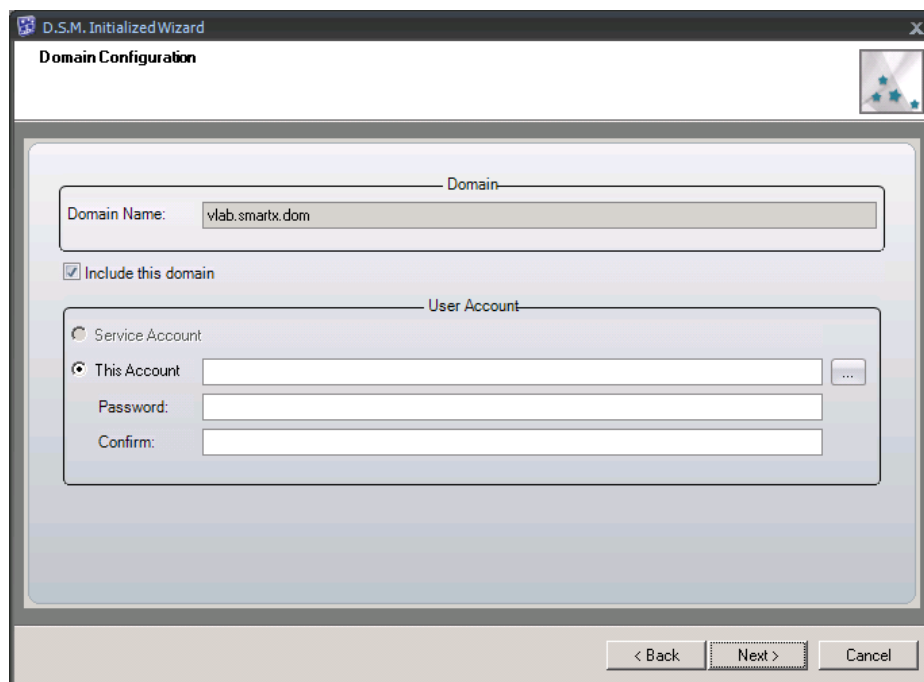
- Click on 'Test Connection' if you want to verify connection to the server.

6. When you reach 'Choose a domain' window:



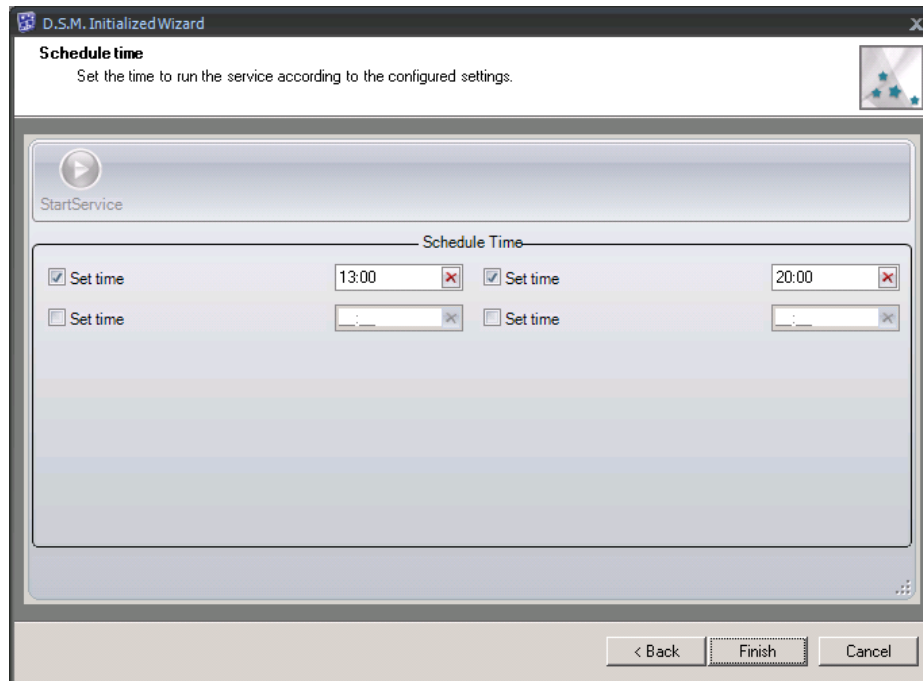
- Choose the domains that the program will scan to find Duplicate SIDs or WSUS.

7. In the 'Domain Configuration' window:



- Specify a user that DSM will use to scan the selected domain.
- Repeat this stage for every domain you have selected in the previous stage.

8. In the 'Schedule time' window



- Define schedule for DSM to scan the domains and click on 'Finish'.

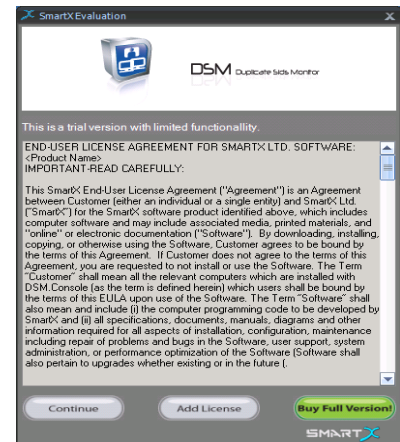
9. Click on 'Close' to complete the installation.

Licensing

DSM is licensed per workstation.

When you double click on the application, you will see a license window from which you can either open the program or add the license file.

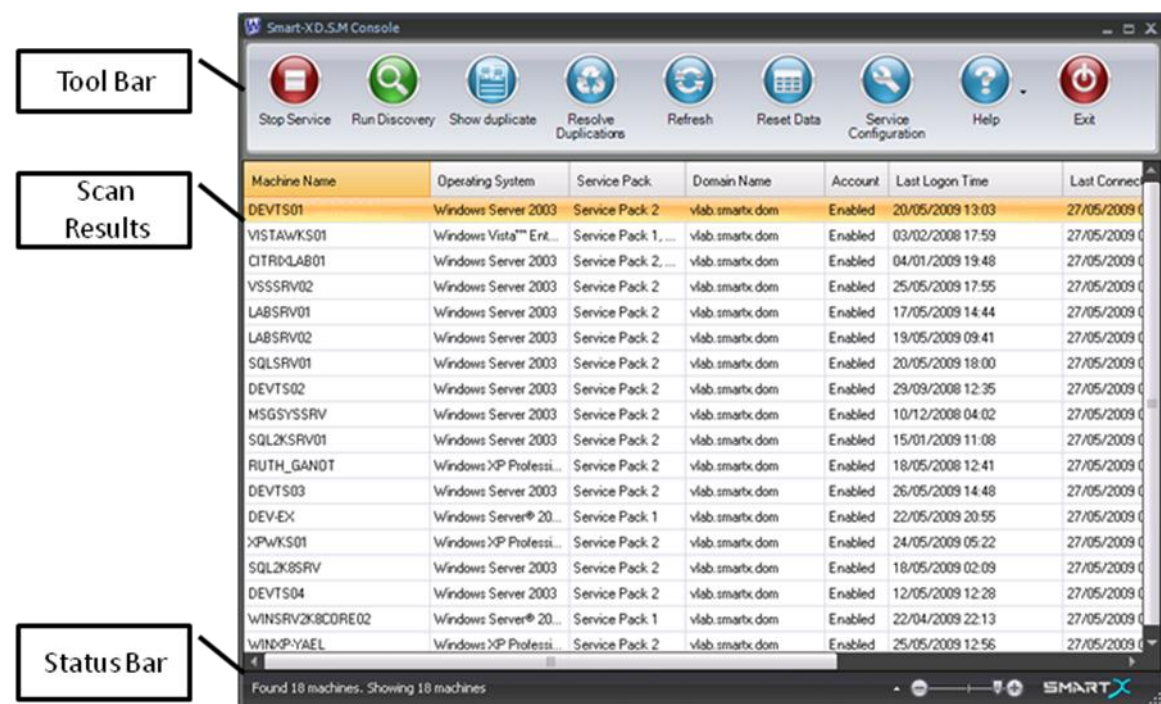
- If you choose the '**Add license file**' option, browse to choose the license file, and complete the process.
- Pressing on '**Continue**' will run the application.
- Pressing on '**Buy Full Version**' will open the Product page at the Smart-x website.



How to use DSM









To use DSM follow these steps:

- Configure the parameters for DSM service to run.
- Scan the machines to identify duplicate IDs.
- Change duplicates.




Tool Bar

Icon	Name	Function
	Stop Service	Stops running the existing service.
	Start Service	Starts scanning according to the schedule.
	Run Discovery	Run scan now

	Service Configuration	Changes service configuration
	Show Duplicates	Displays computers with duplicate SIDs
	Show All	Displays all network computers
	Reset Data	Erases all computer lists from DB (keeps configuration values)
	Refresh	Refreshes connection to DB in order to find duplicate SIDs
	Resolve duplications	Changes duplicate SIDs
	Help	Opens help options: 'About' and 'Legal information'
	Exit	Closes the application

Scan results

- Click on  to display machines with duplicate IDs.

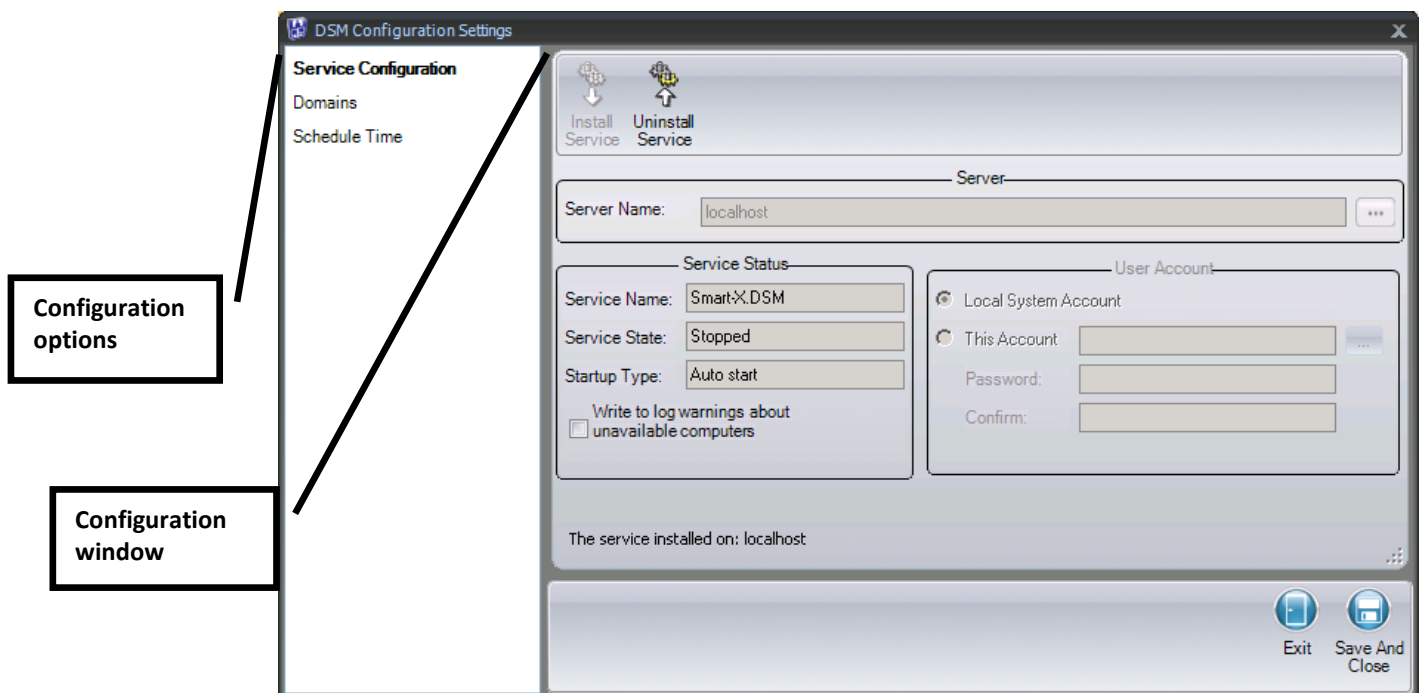
- Click on  display all machines.

Heading	Explanation	Remarks
Machine Name	Displays the name of the scanned machine.	
Operating System	Displays the operating system on the machine.	
Service Pack	Displays the service pack installed on the machine.	
Domain Name	Displays the name of the domain the machine belongs to.	
Account	Displays the account status of the machine in AD.	Options: Enabled / Disabled
Last Logon Time	Displays the last time a user logged on to the machine.	
Last Connection Attempt	Displays the last time DSM tried to scan the machine.	
Status	Displays various notifications regarding the DSM activity.	

Configuration


In order for DSM to Scan the machines, identify duplicates and change them you first need to set the parameters for a service that will run according to the schedule you have defined upon installation.

1. Click on  'Service Configuration'.

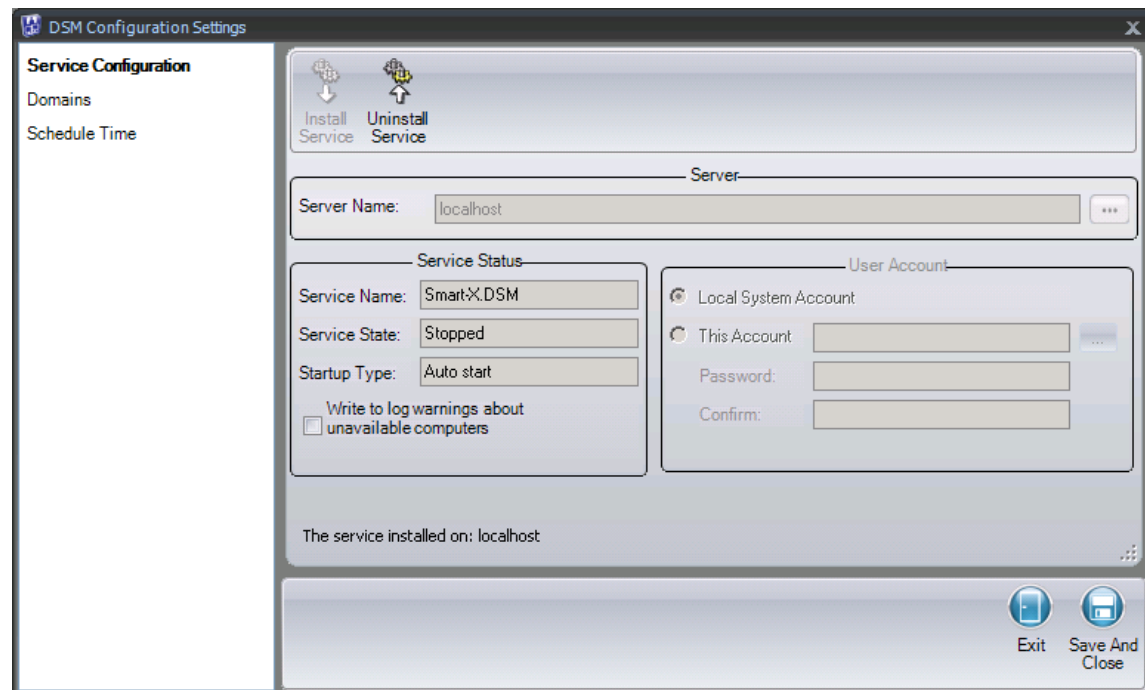



2. Click on the category you would like to configure in the 'Configuration Options' and define the settings (service configuration will be detailed in the next chapter).

3. When finished, click on  'Save and Close'.

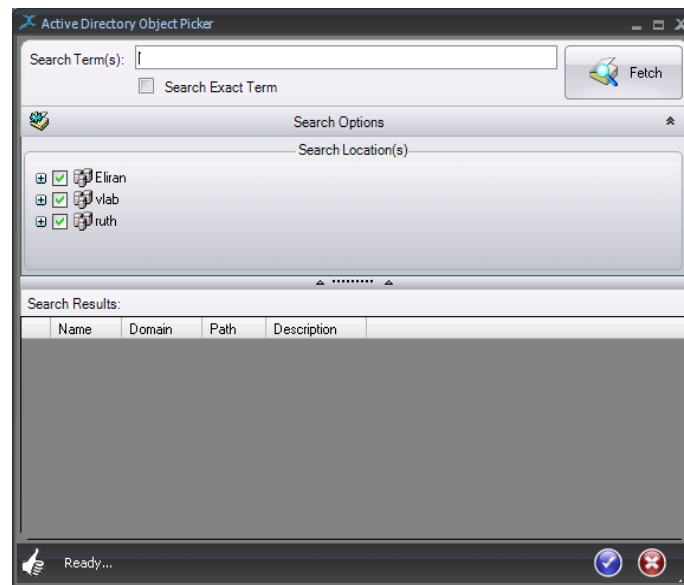
(to exit without saving, click on  'Exit')

Setting Service Configuration

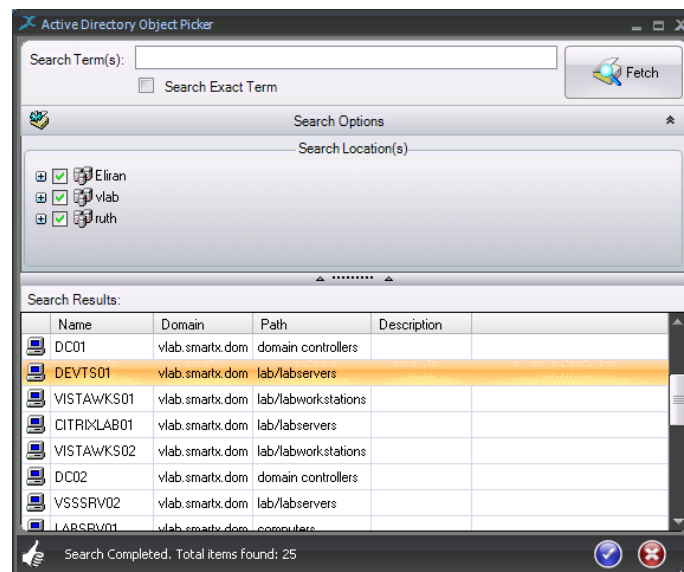


1. Click on 'Service Configuration' in the 'Configuration options'.
2. Choose the server on which you wish the service to run:
 - Click on the browse button .
 - Type the server name on the object picker window and click on 'Fetch'. (you may also click on Fetch without typing a specific

Server name to view an available list of servers)



- Click on the server and then on .

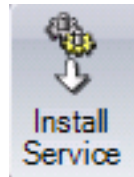


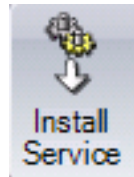
3. On the 'User account' section:

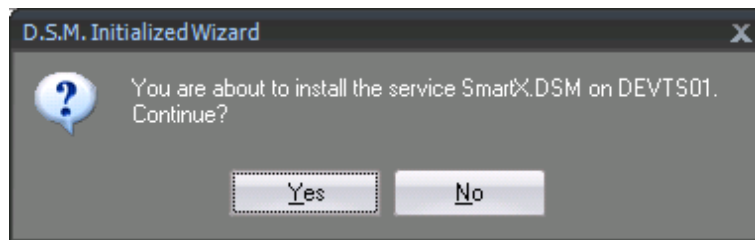
- Choose 'local system account' to use the local logged on user to run the service.

ATTENTION: Choosing to run the service as 'Local System' will require you to configure an account for each configured domain.

- Choose 'This account' to browse and add the specific authorized user name and password to run the service on all the domains.

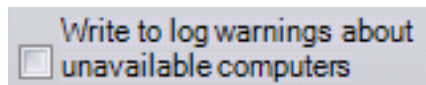


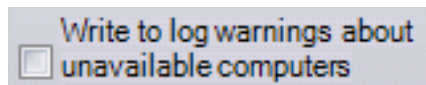
4. Click on  to install the service with the parameters you defined.
5. Click on 'Yes' in the message box.



Service status

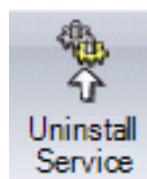
Displays the service parameters as presented in the windows' service window.

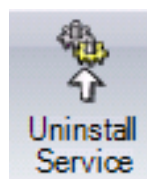


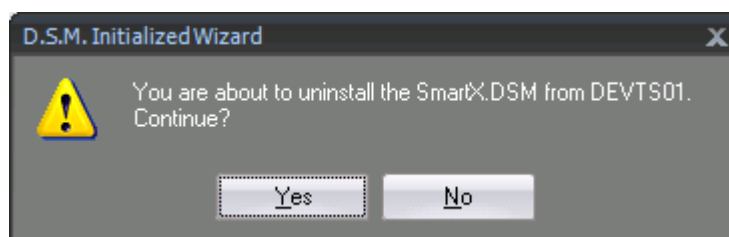
Clicking on  will add a warning message to the application event log for each unavailable computer.

Uninstall service

This function may serve you when you need to run the service on another server or in any situation where new service is required.

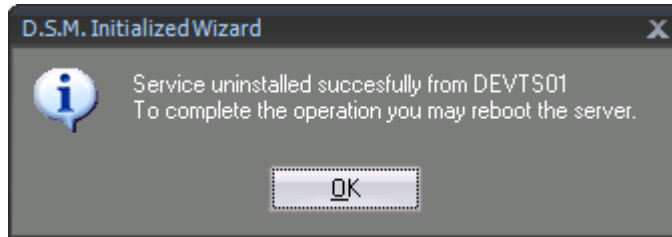


1. Click on .
2. Click on 'Yes' in the message box.




3. Click on 'OK' in the message box.

Attention: to complete the operation you may need to reboot the server.

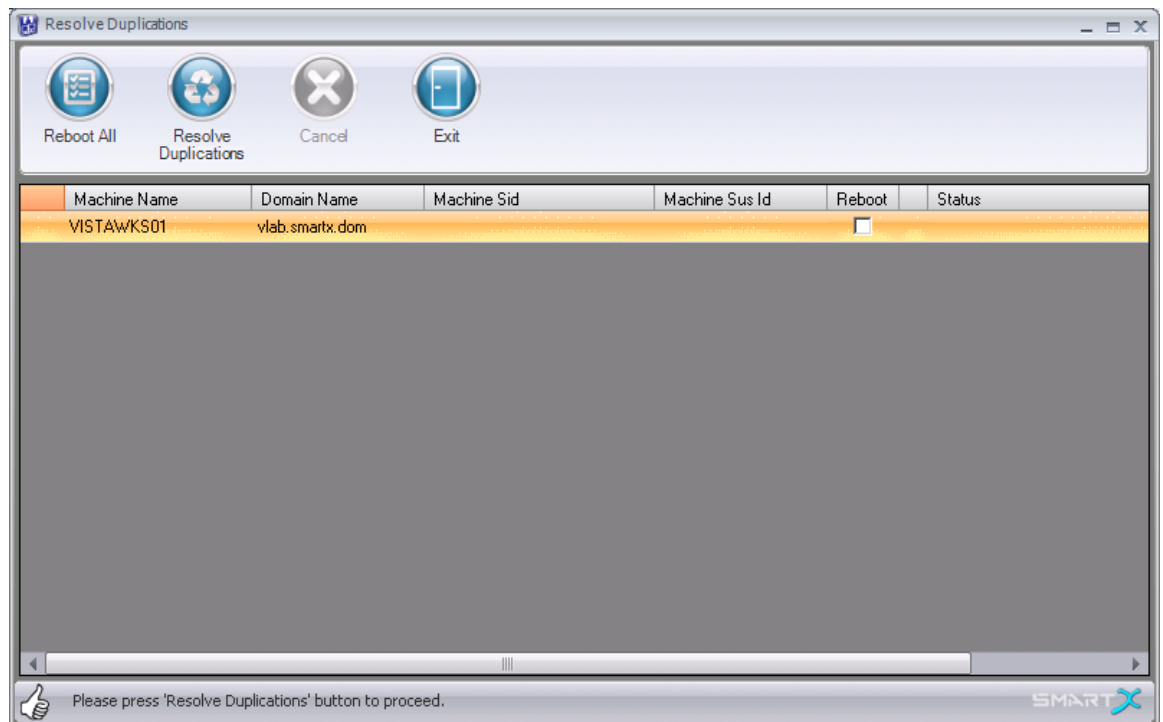






4. Install the new service.

Manage duplicate IDs


1. Click on 'Show Duplicate'  to display the duplicate IDs.
2. Mark the computer/s who's ID you wish to change and click on

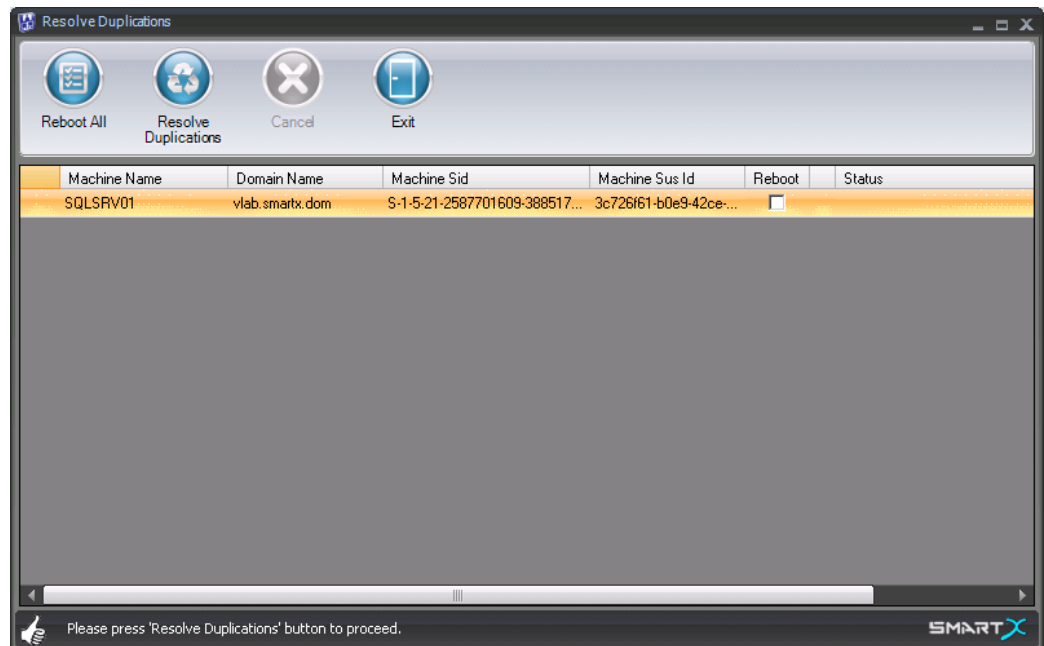
'Resolve duplications'  .



Icon	Name	Function
	Reboot all/ Clear Reboot	Reboot / Do not reboot selected machines after ID changes operation
	Resolve duplications	Changes IDs for selected machines
	Cancel	Cancels ID change operation. (Only for machines who's IDs were yet to be changed)
	Exit	Close the Change ID window.

- Check the left checkbox in order to choose a machine that requires ID change (This will automatically check the Reboot box).
- If you do not want to reboot uncheck the Reboot Checkbox.

- Click on 'Resolve duplications'  .



See that a ✓ sign was added and the 'Status' column displays the message "Duplication resolved successfully".

Enabling IDs change

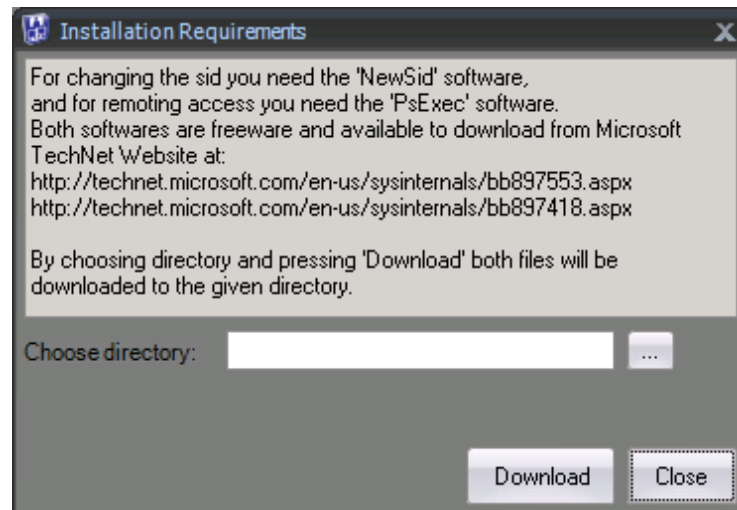
To enable IDs changing you need to have two Microsoft freewares:

- SIDChange.exe – For enabling the SID change function.
- PSEXEC.exe – For enabling SIDs change from a remote computer.

If you do not have the two freeware tools, the following window will appear



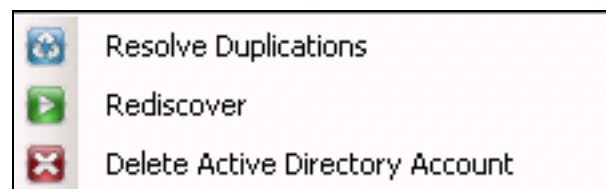
when you click on in the DSM main window:



1. Browse to choose a directory to save the downloaded files.
2. Click on 'Download' to automatically download the files.
3. The 'New SID' window will open and you may continue with the ID change process as detailed in the 'Manage duplicate IDs' chapter.

More functions

Select a machine or a range of machines from the scan result and press on the right mouse button to open the context menu:



- Resolve Duplications – Allows 'resolve duplications' function on the selected machines.
- Rediscover – Scans for duplicates for the selected machines.

- Delete Active Directory Account – Deletes the actual Active Directory account of the selected machines.

Remarks

In some cases, the user you chose to run the service will fail to log on because it lacks the 'Log On As Service' security right on the target server. In such cases, it is recommended to run 'services.msc' on the target server and manually configure the service log_on parameters.