

SPIEFolder

For Windows SharePoint Services 2.0/3.0 and
SharePoint Portal Server 2003/Microsoft Office
SharePoint Server 2007

Release: 1.0

Keith Richie

krichtie@krichtie.com

<http://blog.krichtie.com>

Contents

Introduction	3
Disclaimer.....	3
Background	4
Package contents	5
Included Source Code	5
Software Development Kit Resources	6
Service Pack Resources	6
Operations	7
Syntax.....	7
importing.....	8
exporting	11
Known Issues.....	12
Change History	13

Introduction

Allows you to either Import a file system folder (And all files and subfolders) into a SharePoint Document Library, and also export a SharePoint Document Library to the file system for WSS 2.0/SPS2003 or WSS 3.0/MOSS 2007. This tool completely replicates the a document libraries folder hierarchy to the file system when exporting, and replicates the folder hierarchy from the file system to the document library when importing.

Disclaimer

The source code examples provided in this package are delivered “AS-IS”.

The sample code described herein is provided on an “as is” basis, without warranty of any kind, to the fullest extent permitted by law. Author does not warrant or guarantee the individual success developers may have in implementing the sample code on their development platforms or in using their own server configurations.

Author does not warrant, guarantee or make any representations regarding the use, results of use, accuracy, timeliness or completeness of any data or information relating to the sample code. Author disclaims all warranties, express or implied, and in particular, disclaims all warranties of merchantability, fitness for a particular purpose, and warranties related to the code, or any service or software related thereto.

Author shall not be liable for any direct, indirect or consequential damages or costs of any type arising out of any action taken by you or others related to the sample code.

The example companies, organizations, products, domain names, e-mail addresses, logos, people, places, and events depicted herein are fictitious. No association with any real company, organization, product, domain name, email address, logo, person, places, or events is intended or should be inferred.

Background

I had a SPExportWebFiles tool in the old Utility Suite that did the exporting, and an Import feature in SPSiteBuilder. I've been waiting to find the time or opportunity to provide both a sample/tool that provided both import and export. Just thought I would share in case anyone else needs a quick and dirty way to perform this.

Package contents

This package contains the following files

SPIEFolder.doc	A Word 2003 version of this document
SPIEFolder.pdf	An Adobe Acrobat Portable Document File version of this document
V2\SPIEFolder.exe	A compiled version of the tool using the source code provided for WSS2.0/SPS2003
V3\SPIEFolder.exe	A compiled version of the tool using the source code provided for WSS3.0/MOSS2007
Program.cs	The tools main program code for reference purposes, or custom tailoring to your needs.
AssemblyInfo.cs	The tools assembly meta data code
BuildWSSV2.cmd	A windows script file to build the tool for WSS2.0/SPS2003
BuildWSSV3.cmd	A windows script file to build the tool for WSS3.0/MOSS2007

Included Source Code

The source and included binary build of the tool is provided as is.

This tool can also be used as a reference to understanding the SharePoint Object Model in greater detail. Feel free to tailor it to suit the needs of your environment.

SPIEFolder is written in C#, thus if you wish to rebuild the tools you will need to use the C# Compiler. This compiler is installed on Windows 2003, and can be found in
<%WINDIR%>\Microsoft.NET\Framework

Within this folder you will find one or more subdirectories containing the various releases of the .NET Framework..

In my example, the 1.1 version of the .NET framework is located on my machine in the following directory:

```
%WINDIR%\WINDOWS\Microsoft.NET\Framework\v1.1.4322
```

The included BuildWSSv2.CMD/BuildWSSv3.CMD scripts can be used to compile SPIEFolder.exe from the contained source code and providing the proper references to the Windows SharePoint Services assemblies on the server it is being built on. An extensive description of how the C# compiler; the .NET Framework; the Windows SharePoint Services assemblies; and my code is utilized is beyond the purpose of this documentation and is only referenced here for example purposes.

Software Development Kit Resources

This sample code does not use any unsupported or undocumented SharePoint API calls, and all code should be 100% supported.

For more information on using the Windows SharePoint Services SDK please visit the following sites:

Windows SharePoint Services 2.0 SDK

<http://msdn2.microsoft.com/en-us/library/ms954094.aspx>

Windows SharePoint Services 3.0 SDK

<http://msdn2.microsoft.com/en-us/library/aa902527.aspx>

For more information on using the .NET Framework SDK please visit the Microsoft .NET Framework Developer Center:

<http://www.msdn.microsoft.com/netframework/>

Service Pack Resources

It is also recommended that your server is patched with the latest SharePoint Products and Technologies Services Packs. Not all features are guaranteed to work without being at the most recent service pack.

For Windows SharePoint Services 2.0 visit:

<http://www.microsoft.com/windowsserver2003/technologies/sharepoint/default.mspx>

And follow the instructions for downloading the latest Service Pack for Windows SharePoint Services.

For SharePoint Portal Server 2003 visit:

<http://www.microsoft.com/office/sharepoint/prodinfo/default.mspx>

And follow the instructions for downloading the latest Service Pack for SharePoint Portal Server 2003 Service.

There are no WSS 3.0/MOSS 2007 service packs as of this writing (03/03/2007)

Operations

Use the following section of this document for operational syntax

Syntax

SYNTAX: SPIEFolder.exe <WebURL> <ListName> <Directory> [<import|export>]

where:

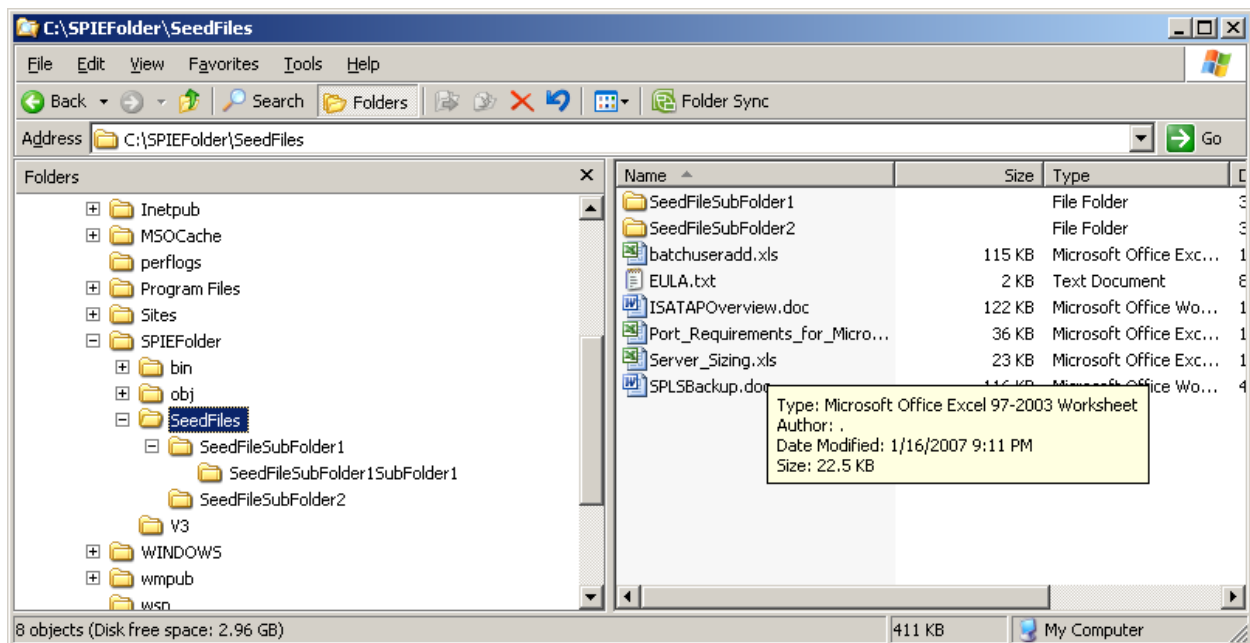
<WebURL>	The Web URL where the list exists
<ListName>	Name of the list (Document Library)
<Directory>	File System directory
[<import export>]	Import or export (defaults to export)

importing

To import a file system folder into a SharePoint Document library and retain the folder hierarchy, simply list the sites URL, List Name, and File System path to read content from.

Consider the following.

A folder exists on the file system with a series of nested folders as shown in this screen shot:



The full file list is as follows:

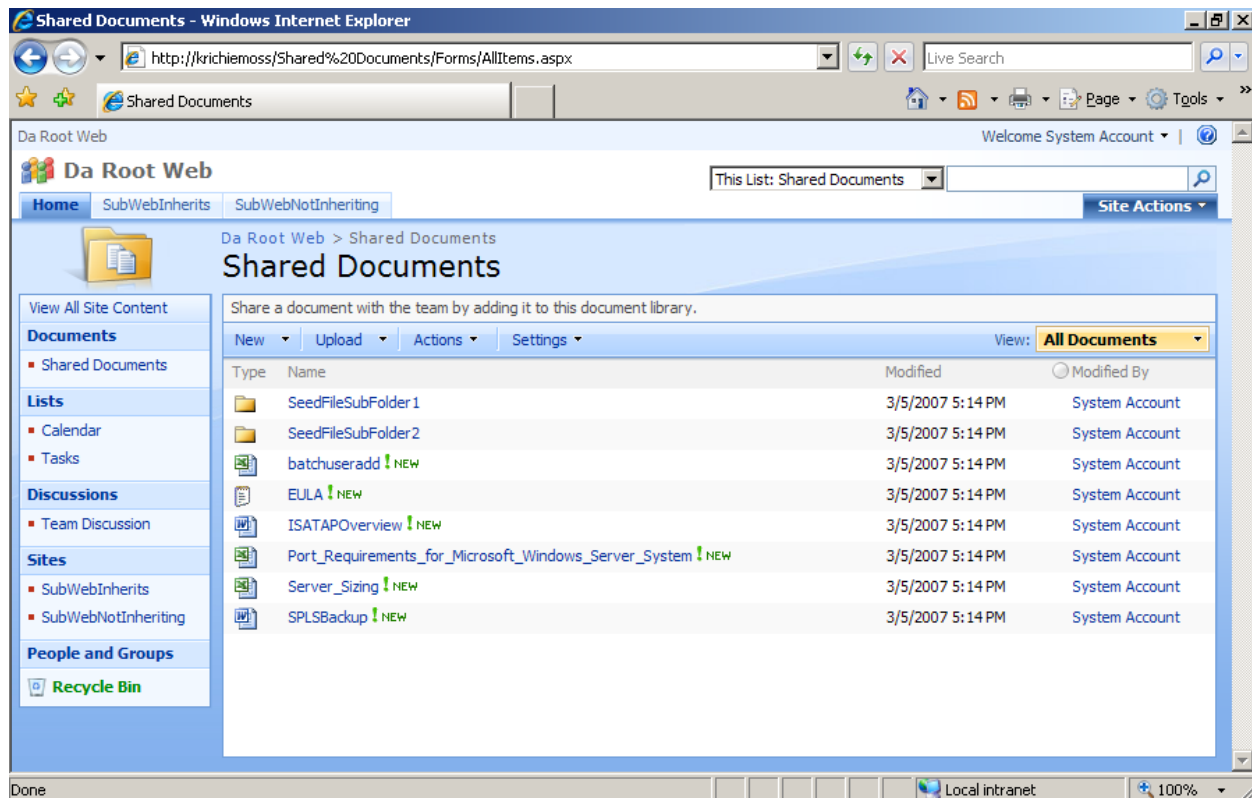
```
c:\SPIEFolder\SeedFiles\batchuseradd.xls
c:\SPIEFolder\SeedFiles\EULA.txt
c:\SPIEFolder\SeedFiles\ISATAPOverview.doc
c:\SPIEFolder\SeedFiles\Port_Requirements_for_Microsoft_Windows_Server_System.xls
c:\SPIEFolder\SeedFiles\SeedFileSubFolder1
c:\SPIEFolder\SeedFiles\SeedFileSubFolder2
c:\SPIEFolder\SeedFiles\Server_Sizing.xls
c:\SPIEFolder\SeedFiles\SPLSBackup.doc
c:\SPIEFolder\SeedFiles\SeedFileSubFolder1\DaSubFolder1EULA.txt
c:\SPIEFolder\SeedFiles\SeedFileSubFolder1\SeedFileSubFolder1SubFolder1
c:\SPIEFolder\SeedFiles\SeedFileSubFolder1\SeedFileSubFolder1SubFolder1\DaSubFolder1SubFolder1EULA.txt
c:\SPIEFolder\SeedFiles\SeedFileSubFolder2\DaSubFolder2EULA.txt
```


The folder can be imported into a Document Library using the following syntax (Note the **"import"** argument:

Example usage:

```
spiefolder http://krichiemoss "Shared Documents" c:\spiefolder\SeedFiles  
import
```

The end result is that the file system folder and complete contents and folder hierarchy is created in the document library on SharePoint



Root of the Shared Documents Document Library (**Note:** This screen shot is for WSS 3.0, for WSS 2.0/SPS 2003 use the V2 build)

Shared Documents - Windows Internet Explorer

http://krichiemoss/Shared%20Documents/Forms/AllItems.aspx?RootFolder=%2fShared%20Docum

Live Search

Shared Documents

Welcome System Account

Da Root Web

Home SubWebInherits SubWebNotInheriting Site Actions

Da Root Web > Shared Documents > SeedFileSubFolder1

Shared Documents

Share a document with the team by adding it to this document library.

New Upload Actions Settings View: All Documents

Type	Name	Modified	Modified By
Folder	SeedFileSubFolder1SubFolder1	3/5/2007 5:14 PM	System Account
Document	DaSubFolder1EULA NEW	3/5/2007 5:14 PM	System Account

Done Local intranet 100%

SeedFileSubFolder1 of the Shared Documents Document Library

exporting

To export a SharePoint Document Library to the file system, and replicate it's folder hierarchy and contents, simply list the sites URL, List Name to read contents from, and File System path to export to. (It is not necessary to supply the optional "export" keyword as it is the default operation.

Example usage:

```
spiefolder http://krichiemoss "Shared Documents" c:\spiefolder\SeedFiles
```

This will export the contents of "Shared Documents" to the file system into the folder specified via c:\spiefolder\ and replicate the document libraries folder hierarchy.

Known Issues

None at this time

Change History

03-03-2007: Initial release made.