



TonerCutter

User's Guide

TCB Technologies Corporation

About Toner Cutter

Thank you for using the Toner Cutter.

By using Toner Cutter, you can keep Ink/Toner cartridges longer and save money. Toner Cutter saves Ink/Toner with patent technology (patent pending) optimized by Ink/Toner. Toner Cutter saves Ink/Toner of 75% at the maximum by an original and about the same quality by high-grade saving technology. Toner Cutter is work in a background after installed, the special operation is unnecessary when printing the documents. In addition, Toner Cutter is available with most printers regardless of local and a network printer because Toner Cutter does not depend on printer driver and connection environment.

For more information: <http://www.tcbtech.co.jp/tonercutter/>

Trademarks

Windows is a registered trademark of Microsoft Corporation. All other company, product and brand names are trademarks of their respective owners.

Copyright © 2009 TCB Technologies Corporation. All Rights Reserved.
Copyright © 2007-2009 Activewave Interact, Inc. All Rights Reserved.

Index

Index.....	2
System Requirements.....	3
Functionality.....	4
Installing Toner Cutter	6
1. Install.....	6
2. Uninstall.....	10
How to use Toner Cutter	11
1. Running the Program.....	11
2. Exiting.....	12
3. Enabling/Disabling.....	12
4. Registration	13
5. Operating the program.....	14
6. Setting Color Watermark	19
7. Preferences.....	22
8. Print Test Page	24
Sales and Support	26
Sales Inquires	26
Support Inquires.....	26

System Requirements

System Requirements

Operating Systems: Windows 2000/XP/Vista/7 (32bit and 64bit)

RAM: 256 MB minimum (Windows 2000/XP)

512 MB minimum (Windows Vista/7)

Disk Space: Minimum of 8 MB for installation

Note:

1. There is the case that Ink/Toner saving and a Watermarks cannot print on a document printed depending on a printer by the layout function of the printer definitely.
2. Toner Cutter has not been designed to use on PDF generators (Virtual Printer driver.) to apply Ink/Toner savings. Since, this products has designed to apply on actual print outs. However, some PDF generators or virtual printer driver kicks Toner Cutter. To avoid applying Ink/Toner saving settings, we recommend add excluded printer list in 'Exclude printers'.
3. The recorded in print logs will be outputted for target documents to print. If you set copies from printer properties, it won't count on the Print log.
4. In case you have received unexpected result from the actual print outs by using Windows bundled drivers, please use recent Printer drivers which has provided by Printer vendors.
5. In case you have received unexpected result from the actual print outs by Postscripts driver, please try to use most recent version of the driver. If you still having a problem with using the driver, please try to use another printer languages, such as PCL.
6. With the higher saving rates for Ink/Toner settings, expected values could not be provided with monochrome options for photos and graphics. It may also have difficulty print out gray colors and lines.

Functionality

- **Saves Ink and Toner**

Toner Cutter can reduce your Ink/Toner usage by up to 75% and works on both Inkjet and Laser printers. Our optimizing algorithm technologies have made possible to control Ink/Toner savings with very close quality of the original documents.

- **Supports native 64 bit**

Toner Cutter supports environment of 64 bits with a native function. You can use Toner Cutter without the operating system affecting 32/64 bit.

- **Makes true printing quality**

With our non-conventional technologies, it makes possible to deliver very close quality of actual print outs without having dead pixels.

- **Color Watermark Function**

You can add watermarks only for printing documents. You can customize font styles, sizes, colors and orientations with original phrases, such as "Confidential", "Saving 25% of Ink/Toner for our planet" or something you want to show as watermark.

- **High-speed processing**

By our independent printer driver technologies, printing times won't be impacted by our product. It won't take you stay longer to wait in front of your printer than before.

- **No special settings required to apply Ink/Toner savings to each software applications.**

Toner Cutter resides in the system tray and does its work in the background. It won't require setup each application individually to use Toner Cutter. Also, you can change your preferences by clicking Toner Cutter icon on your task tray anytime you want.

- **Manages settings by profiles**

You can save up to 100 unique Ink/Toner saving settings as 'Profiles'. These can be conveniently switched by right clicking the system tray icon. For example, names "Internal use" or "External use" then you can select the profile anytime you want by one operation.

- **Printer independent**

Toner Cutter can be used with any printer, as well as printers shared over any Local Area Network (LAN). Since Toner Cutter is printer driver and/or networks independent.

- **Logs printing activities**

The Printing Logs stores printing information such as the saving ratio used, the number of sheets printed, the date and time of each print, the name of the file printed and the name of the printer you printed with. You can save the Printing Log or export it as a comma separated file (CSV), so that you can visualize the saving efficiency or reduction rate easily.

- **Manages software applications**

The Application Filter allows you to set the applications for which you always want to print using Toner Cutter's Ink/Toner saving and the applications for which you never want to print using Toner Cutter's Ink/Toner saving. Recommends added your photo managing tools to your exclusions, since you may want to see your photo on your photo papers with brilliant colors and qualities.

- **Manages printer exclusions.**

Toner Cutter can filter specific printers which you don't want applying to the applications. For example, some Postscript printer won't work as mentioned as below. After add the printer to the filter list, you can avoid to see annoying quality print outs.

- **Import/Export Settings**

By saving settings for Saving ratio, target printers, Watermark, and such, you can import or export the setting to share with another computers.

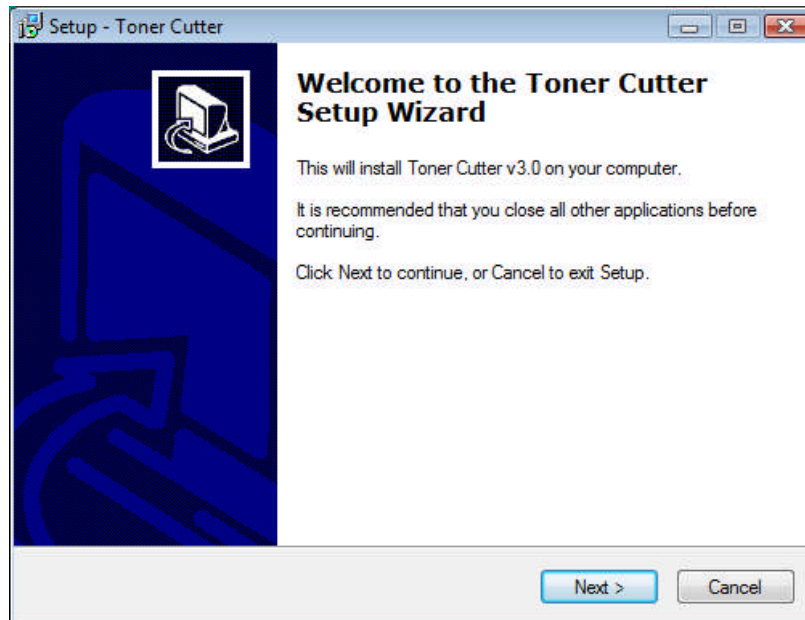
- **Print Test Page**

You can print a test page to check if your printer is printing graphics and text correctly with Toner Cutter. We recommend you to find best result with Toner Cutter before you use on your daily work.

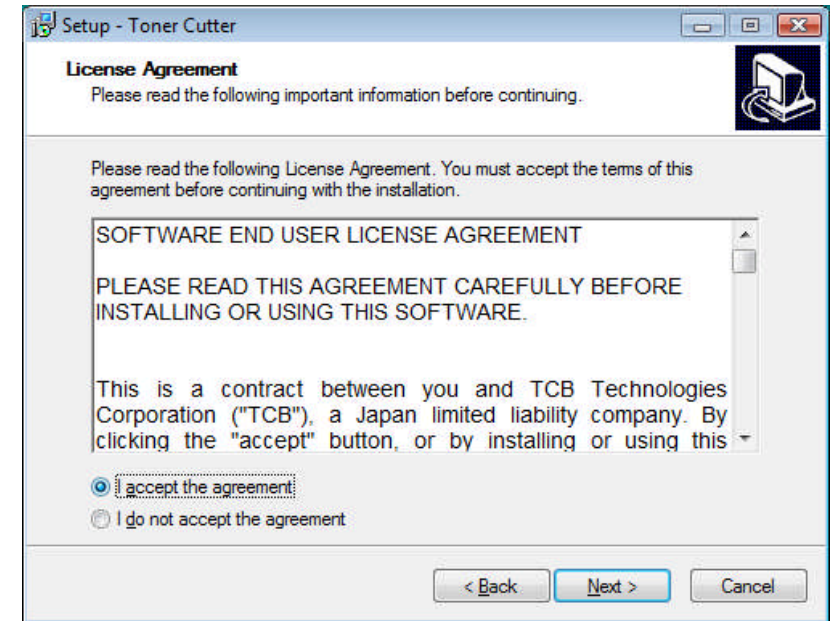
Installing Toner Cutter

1. Install

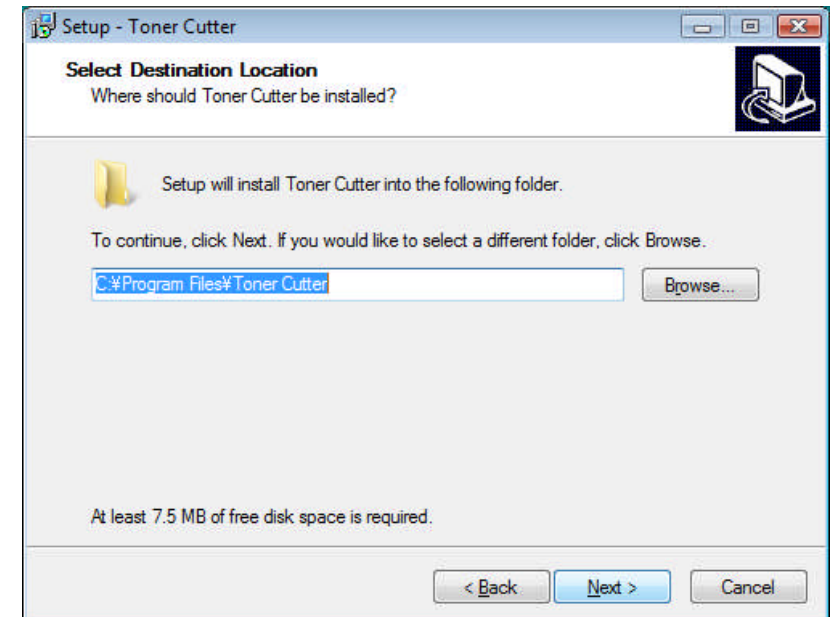
1. Double-click on the installation file 'TonerCutterEng.exe' to start the installation.
2. When this dialog box appears, click 'Next' to continue.



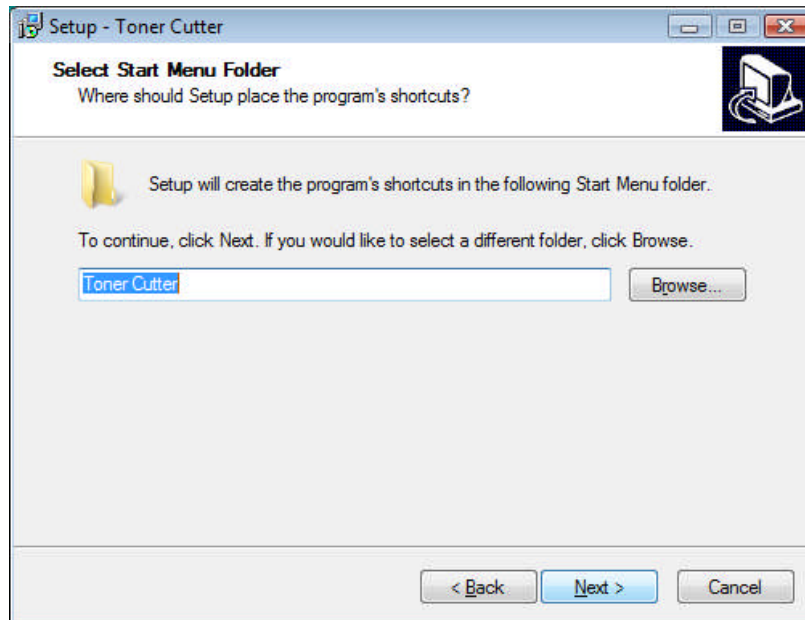
3. The License Agreement contains important information about your rights and your responsibilities involving the use of this software. You must read and accept the agreement before click 'Next'.



4. Please choose a folder to install Toner Cutter. Usually this program is installed in a folder in Program Files. If you want to change this, please enter the path or click the Browse and choose a folder. Click 'Next' when you are satisfied with the directory path.

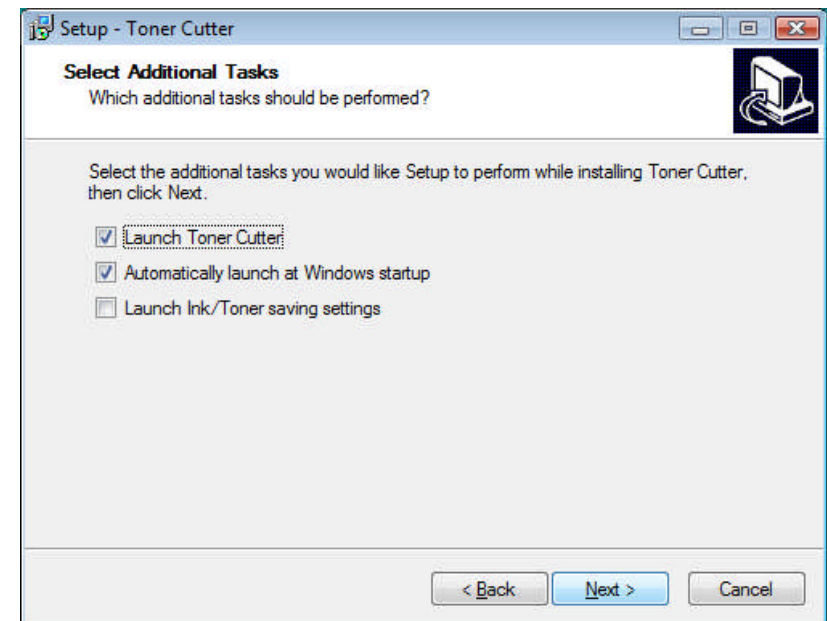


5. Please select a Start Menu Folder to create Toner Cutter shortcuts. Usually this program is created in a folder in Toner Cutter. If you want to change this, please enter the folder name. Click 'Next' when you are satisfied with the folder name.

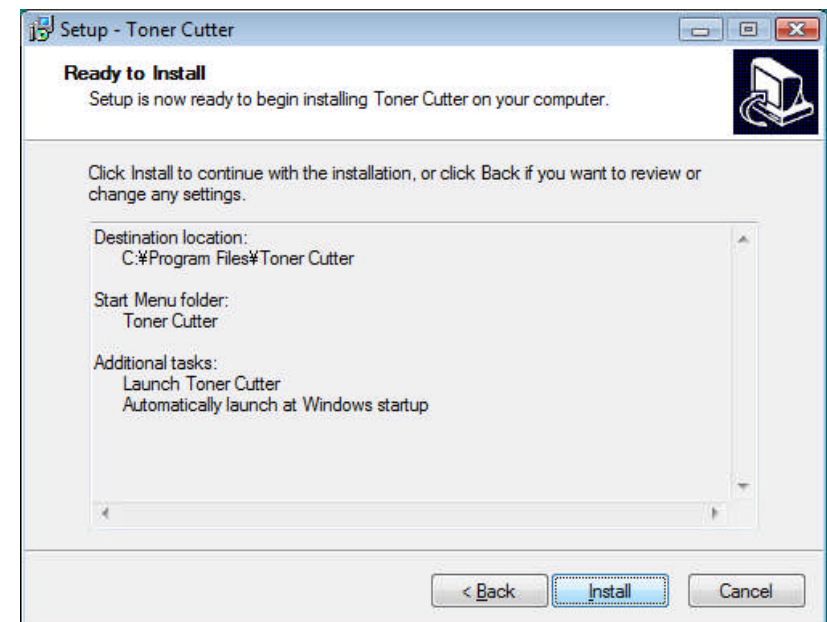


6. Choose whether or not to run optional certain tasks or settings after the installation. If you chose the 'Automatically launch at Windows Startup' option, Toner Cutter is launching the automatically at Windows log-on.

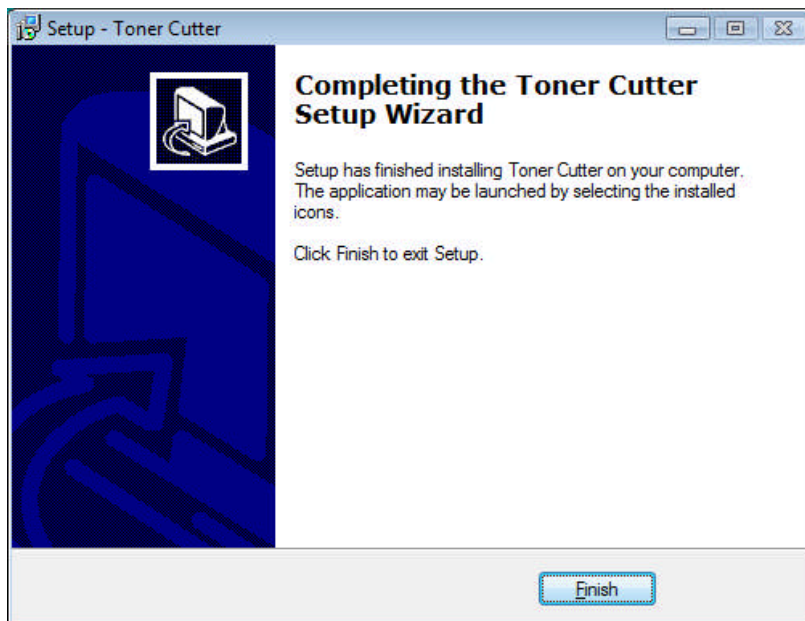
Note: 'Automatically launch at Windows startup' option is applied to only the user who carried out Toner Cutter installation. When you use a user account different at the time of installation, a change is necessary with options of preferences screen.



7. This is the final review screen of the installation settings. Click 'Install' to begin installing Toner Cutter.

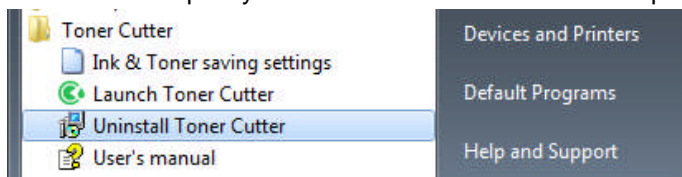


8. When Setup has finished installing the program, all that is left is to click the 'Finish' button and start using Toner Cutter.

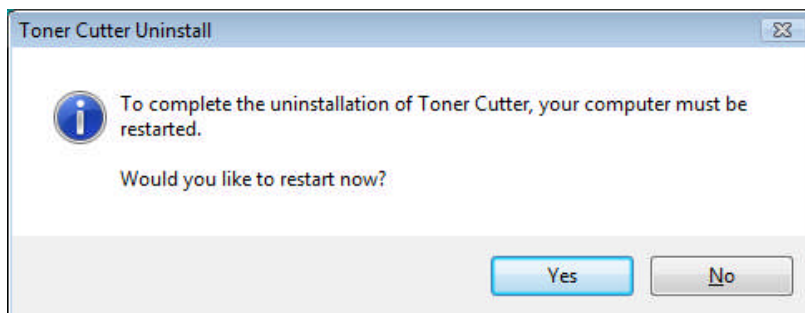


2. Uninstall

1. Select 'Start' -> 'All Programs' -> 'Toner Cutter' -> 'Uninstall Toner Cutter'. Click 'Yes' to completely remove Toner Cutter and all of its components.



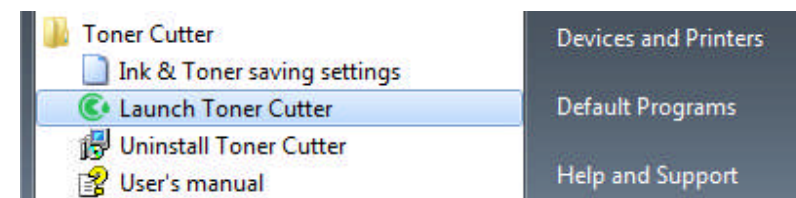
2. You must restart your computer to complete the uninstallation. Click 'Yes' to restart now.




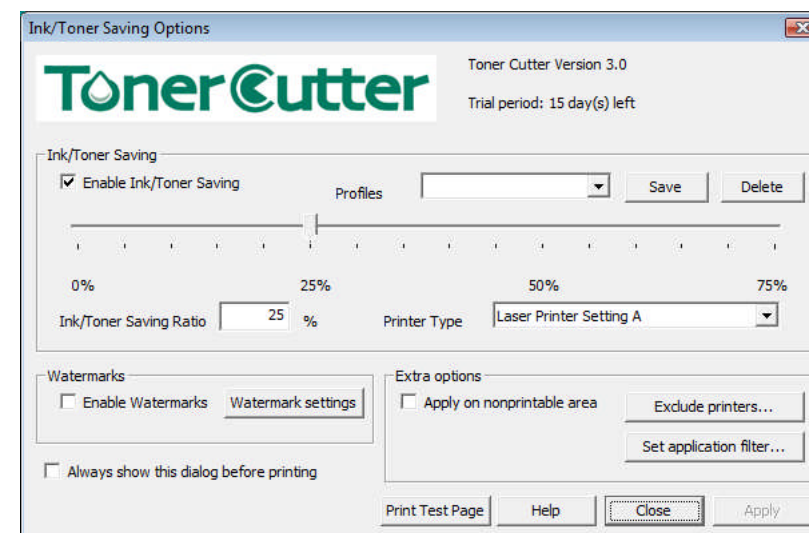
How to use Toner Cutter

1. Running the Program

If the installation was followed correctly, Toner Cutter should have its own folder in the Start Menu. Toner Cutter starts in a background when you click 'Launch Toner Cutter' in the Start Menu.

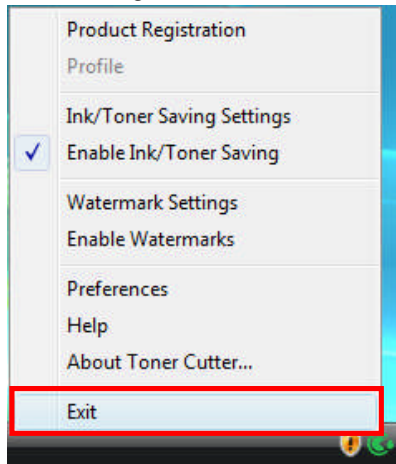


When the program is running, there should be a green icon in the system tray . Double-clicking on the icon brings up the main settings of the program:



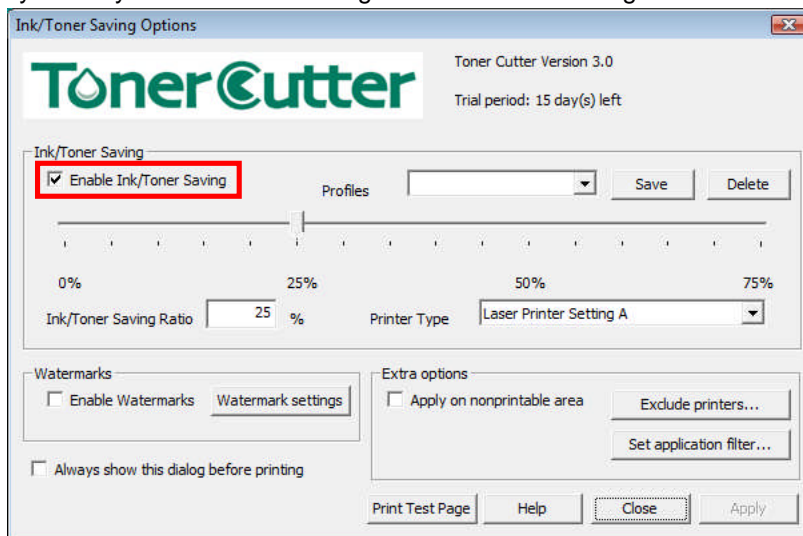
2. Exiting

You can exit Toner Cutter at any time by right-clicking the system tray icon and selecting 'Exit' at the bottom of the menu.




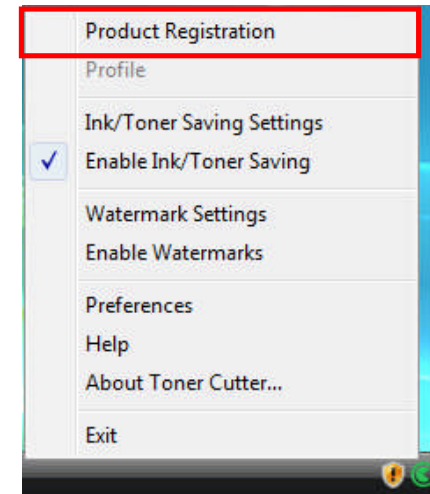
3. Enabling/Disabling

If you don't want to quit the program entirely, it is also possible to quickly enable and disable the Ink/Toner saving settings by right-clicking on the system tray menu and then clicking 'Enable Ink/Toner Saving' in the menu.



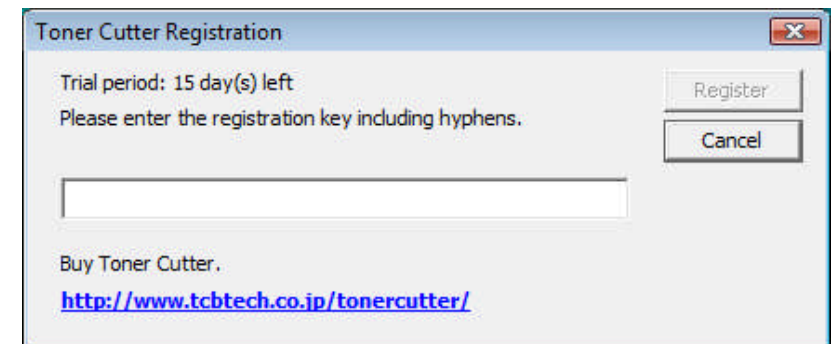
4. Registration

1. To register your copy of Toner Cutter, right-click on the system tray icon  and choose the menu item at the top, 'Product Registration'.

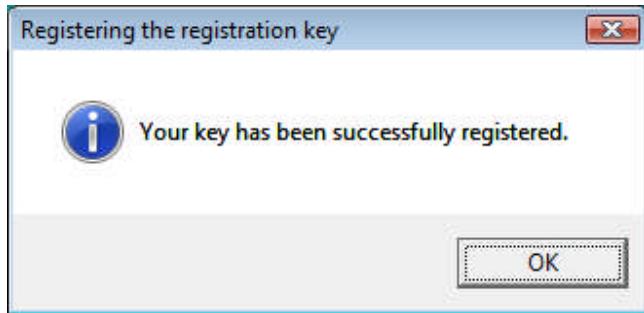


2. Upon clicking the menu item, the following screen is displayed. Enter the registration key into the text box and click 'Register'.

NOTE: If the registration key you enter is not valid, the register button is not enabled.



3. Upon successful registration, the following screen is displayed. The software acknowledges your registration key and you can continue to use Toner Cutter indefinitely.



5. Operating the program

The Ink/Toner Saving Options window allows you to control the primary Toner Cutter functions.

Note:

PDF Virtual Print Support:

Toner Cutter is designed to disable the Ink/Toner saving function when working with major PDF virtual printers. Since a PDF virtual printer actually generates PDF files instead of produces real paper printouts, there is no need to reduce the color or quality of the output. In other words, there is no need to 'save Ink/Toner'

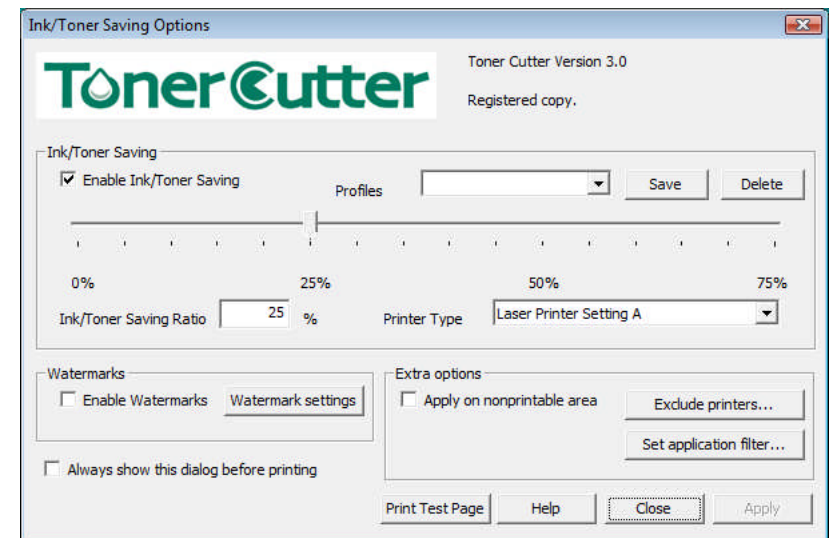
However, there are a few PDF virtual printers that Toner Cutter cannot recognize at this time. As a result, the generated PDF files may have reduced color or quality. If this happens, you can simply add the exclude printer in Exclude printer list before you print in order to prevent color and quality reduction.

Watermark Support for Single-Page Printing:

Watermarks may not appear when printing a single page using the multi-page printing function of some printers. We recommend that you test whether the Watermark appears correctly when using the multi-page print function with your printer.

1. Check 'Enable Ink/Toner Saving' to begin using Ink/Toner saving when printing, and then choose the Ink/Toner saving ratio in one of two ways:

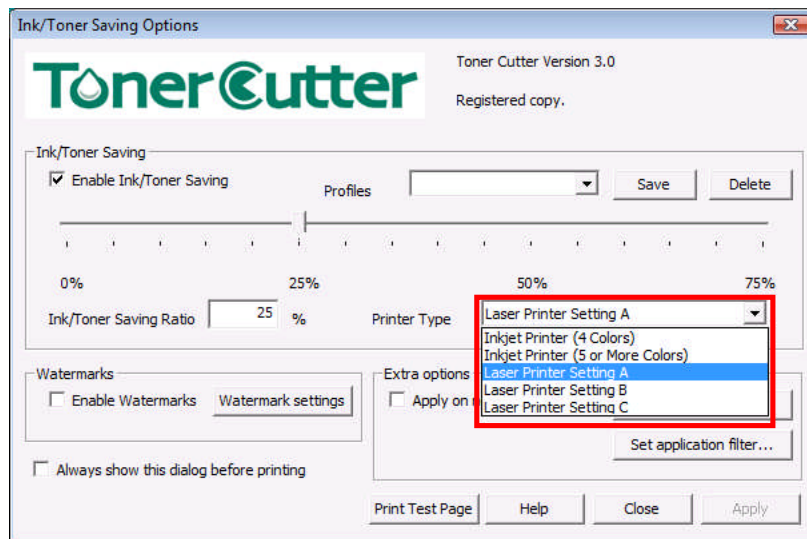
- A) By using the slider bar to select saving of between 0% and 75% of normal Ink/Toner usage.
- B) By directly typing a percentage between 0 and 75 to specify how much of the normal Ink/Toner usage to save.



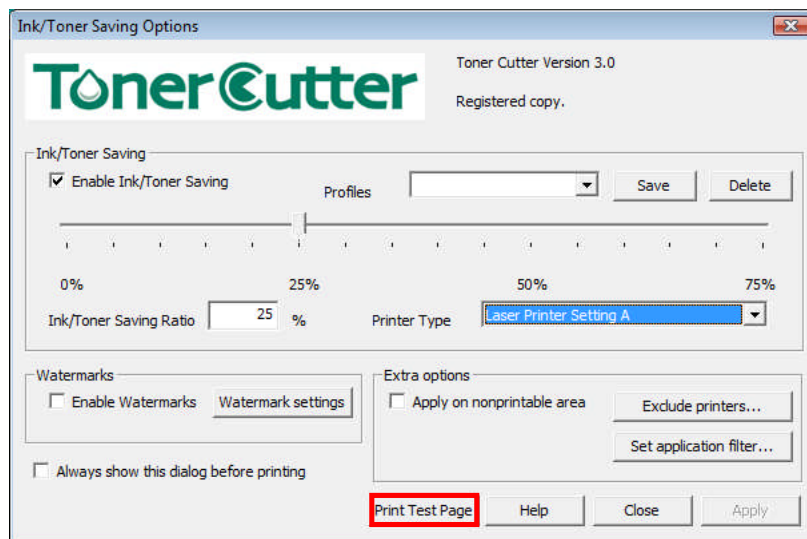
2. You must also choose the 'Printer Type' by selecting from the drop-down menu.

Note:

Laser Printer Setting A and B and C for laser printers are three standard resolution settings that comply with most laser printers. If you find that documents printed with the default quality setting (Laser Printer Setting A) are not of the highest quality, we recommend that you print a test page with Laser Printer Setting A and B and C to compare which resolution setting works best with your laser printer. There may or may not be any noticeable difference between the two options as resolutions differ from one laser printer to another.



3. To see a test page with the current print settings, click on 'Print Test Page'.

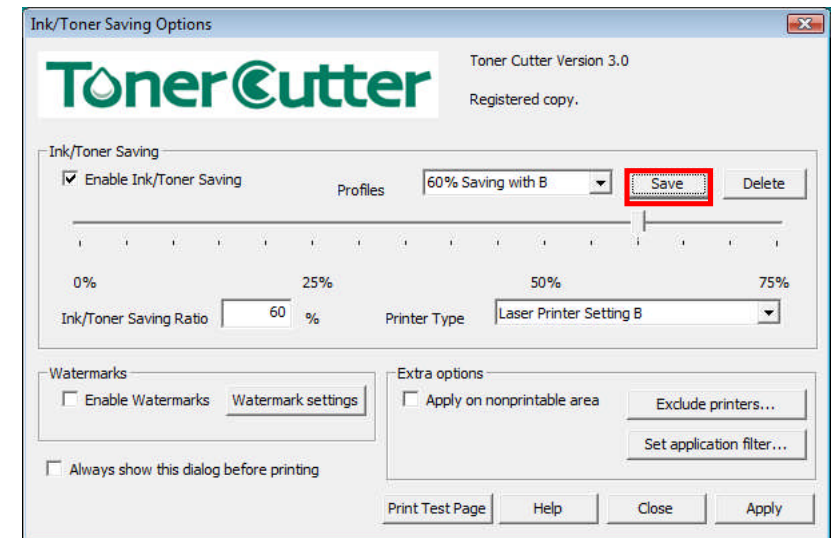


4. When 'Always show this dialog before printing' is checked in the system icon tray, the Ink/Toner Saving Options window always appears to allow you to confirm the Ink/Toner saving ratio and/or more settings prior to printing.

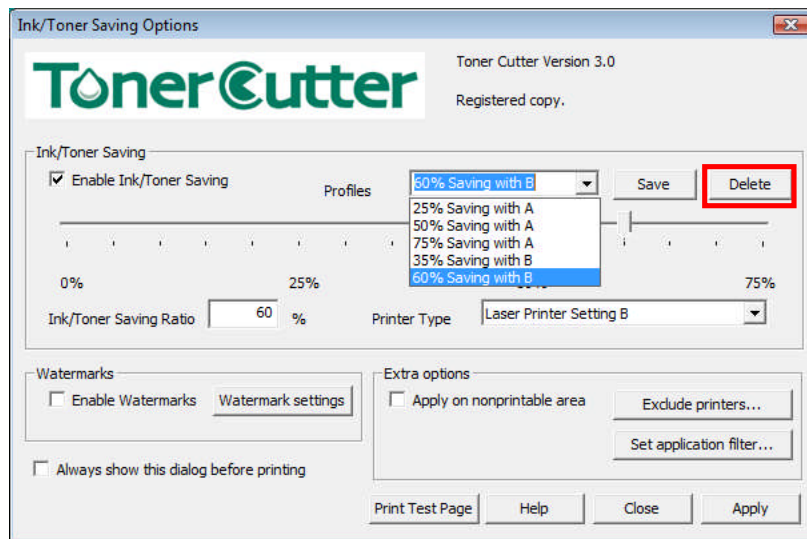
☒ Always show this dialog before printing

Saving Profiles


1. Toner Cutter allows you to save up to 100 preset profiles from the Ink/Toner Saving Options window. After setting the Ink/Toner Saving Ratio and Printer Type, type in a name for the profile then click 'Save'. By saving profiles, you will be able to quickly change to and from saved saving ratios.

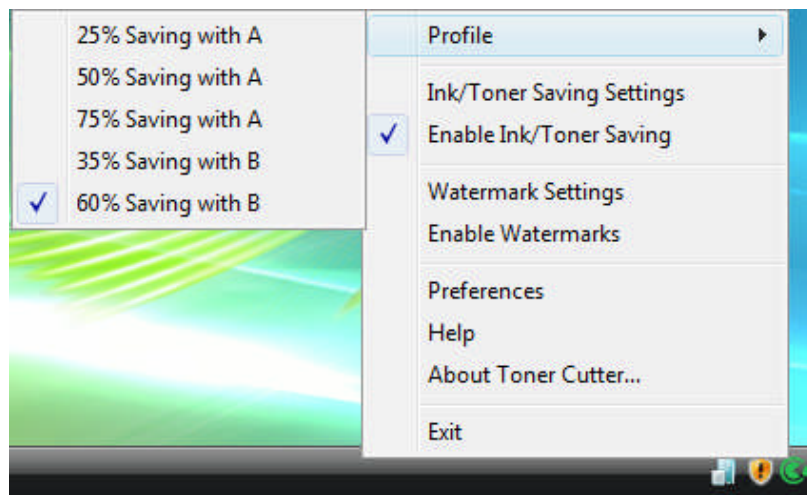


2. To select saved Ink/Toner Saving Ratio profiles, select the one you want from the drop-down menu. To edit a saved profile, first select the profile, then change the Ink/Toner Saving Ratio and/or the Printer Type, and then click 'Save' without altering the Profile name. You can also delete a previously saved Profile at anytime by first selecting it, and then clicking 'Delete'.




3. To save additional Profiles without affecting previously saved Profiles, each Profile name must be unique.

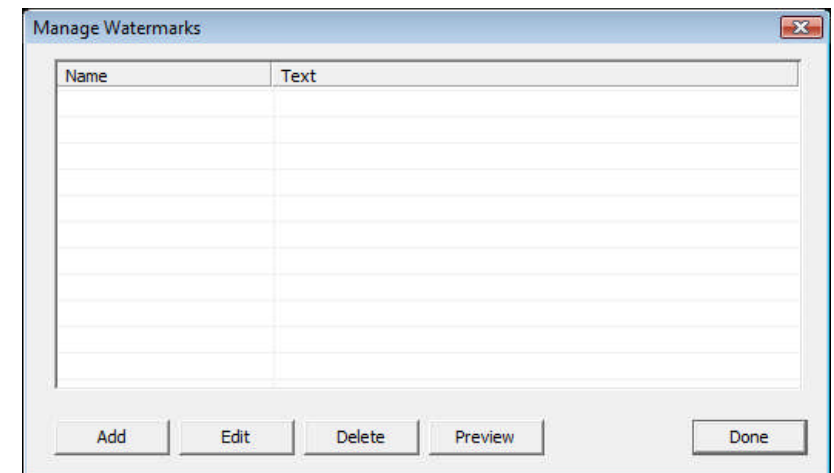
4. For added convenience, Profiles can be directly accessed from your desktop by right-clicking the system tray icon. 



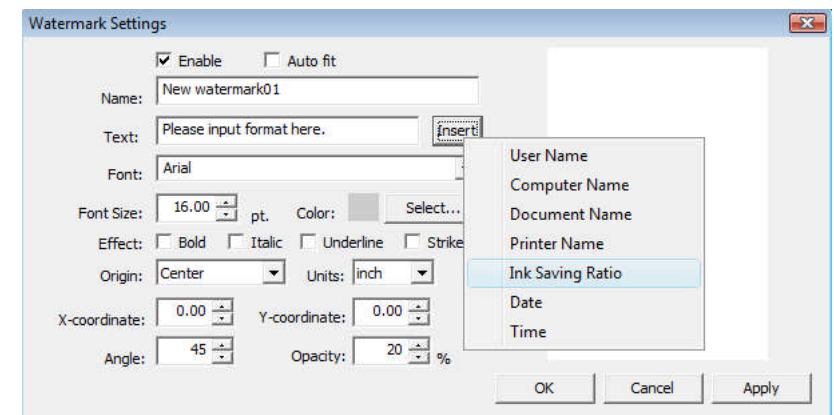
6. Setting Color Watermark

- The Ink/Toner Saving setting does not apply to watermarks. Instead, adjust the Ink/Toner usage of a watermark by adjusting the opacity. The opacity is set to 20% by default.

1. To create a custom watermark, right-click the Toner Cutter tray icon  then select 'Watermark Settings' to display the Manage Watermarks window.

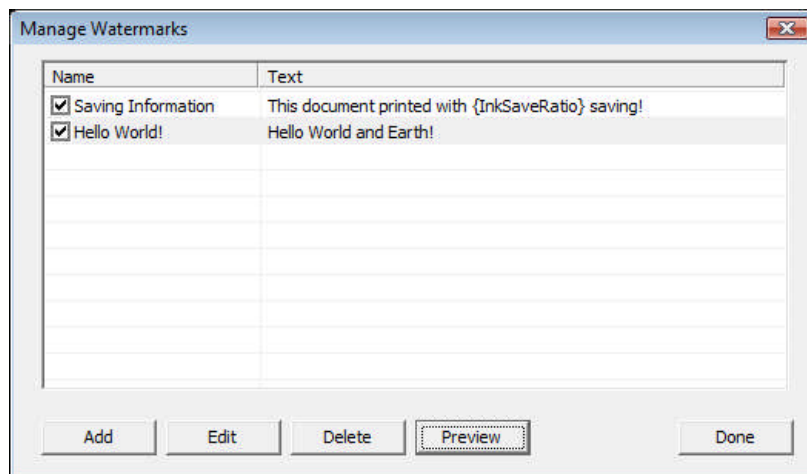


2. Next, click 'Add' to display the Watermark Settings window.

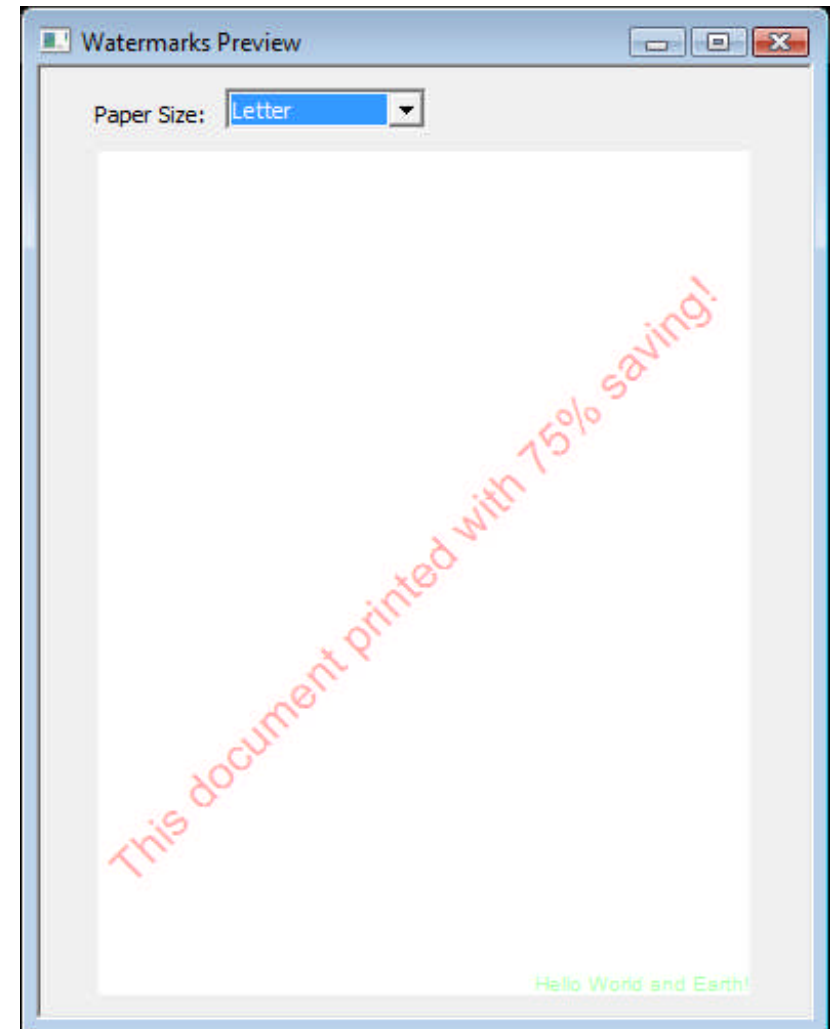


- Enter the name you want to save your watermark in “Name:”
- In “Text:” type in the word or phrase you want to print as the watermark. You may also choose to insert the ‘User name’, ‘Computer name’, ‘Document name’, ‘Printer name’, ‘Ink saving Ratio’, ‘Date’ and ‘Time’ by clicking on ‘Insert’ and choosing the option.
- Next, select the ‘Font:’ and ‘Font Size:’ of the text, and the orientation and opacity of the watermark.
- To specify the orientation of the watermark, select where you would like the first letter to begin by specifying the (x, y) coordinates and then specifying the angle. For example, if you set the x-coordinate to 0.00, the y-coordinate to 0.00, and the angle to 45°, the watermark will read from left to right, sloping upwards towards the top right corner.
- If you check ‘Auto fit’, your watermark will automatically fit across the page.
- Click ‘Apply’ to save your custom watermark, then click ‘OK’.

3. The Watermarks Settings window is now updated with your newly added watermark. To use a watermark, check the box next to the watermark you want to use, then click ‘OK’.



4. From the Watermarks Setting window, you can add another watermark by clicking ‘Add’, or edit the currently selected watermark by clicking ‘Edit’. You can also preview a document with the added watermark by clicking on ‘Preview’, which also allows you to select the paper size to view.



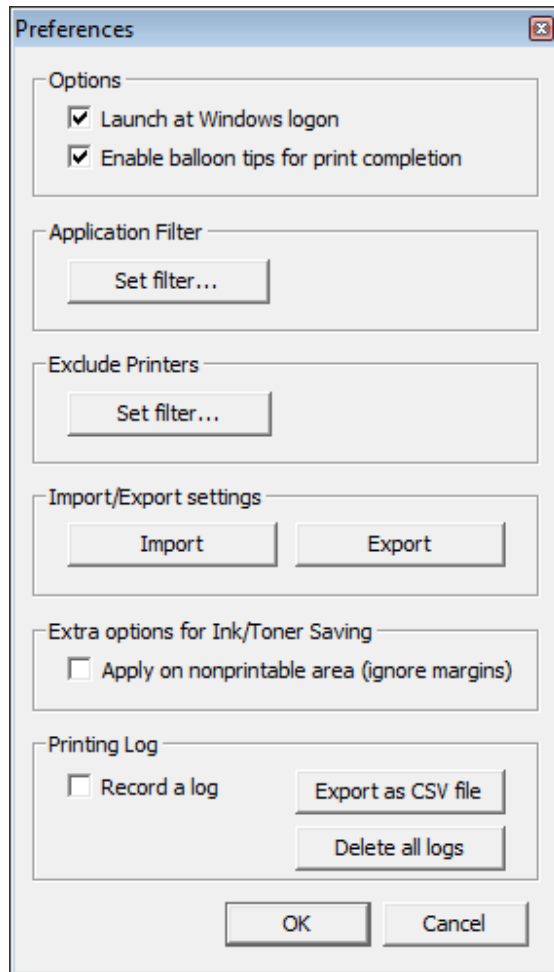
5. To exit the preview, click on the ‘X’ at the top right corner of the window.

7. Preferences

The "Preferences" dialog allows you change the Application Filter, Import/Export settings, Printing Log settings, Enable/Disable balloon tips, etc.

1. To open the Preferences dialog box, right-click the Toner Cutter tray icon

[] and select "Preferences".



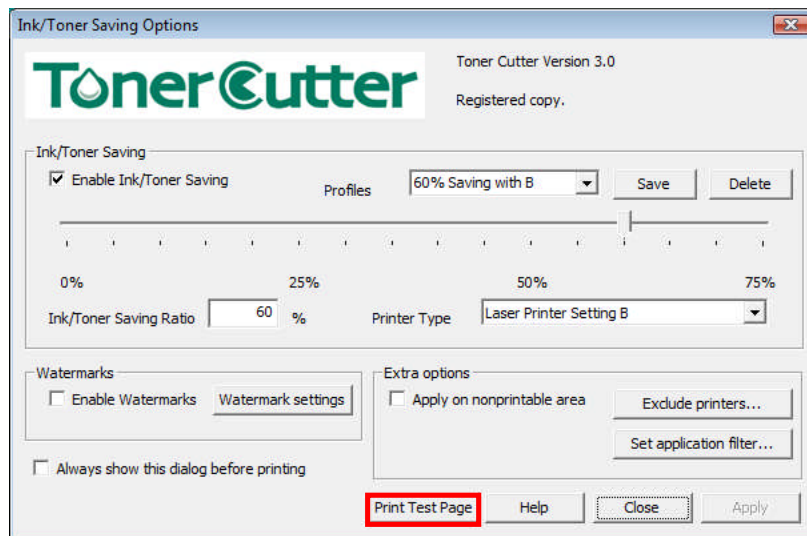
2. The Preferences settings allow you to customize the following options:

Options	'Launch at Windows logon' – enabling this option allows Toner Cutter to automatically start when Windows starts up. Enabling this option is recommended.
	'Enable balloon tips for print completion' – by enabling this option, the status window will pop up each time a print job is sent. This option can be disabled at any time without affecting printing.
Application Filter	You can customize this filter to set the applications that will always or never print using Toner Cutter. To customize, click on 'Set filter...' to open the Application Filter dialog. Click 'Add' to select an application to add to the filter. The maximum number of applications that can be filtered is 50.
Exclude Printers	You can customize this filter to set the exclude printers that will never print using Toner Cutter. To customize, click on 'Set filter...' to open the Exclude Printers dialog. Click 'Add' to select a printer to exclude the saving.
Import/Export settings	'Import' - allows you to import a settings file to either restore previous settings or to import the settings from
	'Export' - allows you to save your current print settings to export to another computer or to keep as backup.
Extra options for Ink/Toner Saving	Expands the print object area up to the maximum size. NOTE: This is necessary for specific applications. (e.g. Internet Explorer...)
Printing Log	You can save a printing log that contains information about each print job or you can export the printing log in a comma-separated file (CSV). To export as CSV, click 'Export as CSV file', enter the name you wish to save the file as then click 'Save'. You can also delete all printing logs by clicking on 'Delete all logs'. We strongly recommend that you export the log before deleting it. NOTE: The 'Pages' column in the printing log shows the number of pages in the original document that was printed and does not record the total number of pages printed when printing with the number of copies > 1.

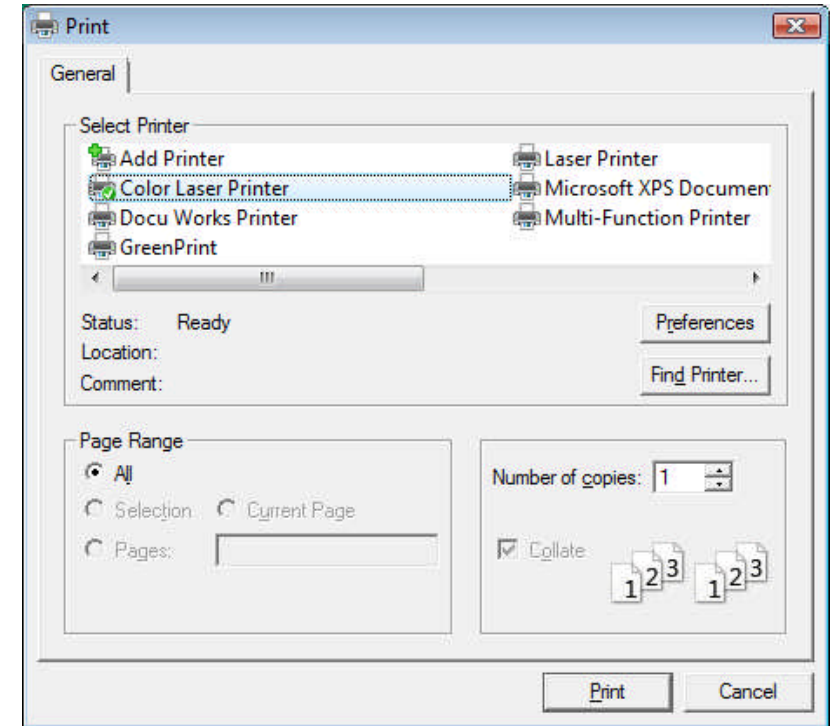
8. Print Test Page

The Print Test Page function can be used to check if your printer is printing graphics and text correctly as well as comparing Ink/Toner saving ratios to attain the best quality and Ink/Toner saving ratio. You can also print test pages using different settings of the watermark feature, such as opacity, size and location, in order to attain the desired result.

1. To Print a Test Page, open the 'Ink/Toner Saving Options' window either by clicking on 'Start' -> 'All Programs' -> 'Toner Cutter' -> 'Ink & Toner saving settings' OR by right-clicking on the Toner Cutter icon in the system tray and selecting 'Ink/Toner Saving Settings'.



2. Click 'Print Test Page' to open the following 'Print' window. Select the printer and the number of copies to print, then click 'Print'. If you are printing with a laser printer and have not discovered which resolution option works best for your printer, print two test pages, one using Setting A and the other using Setting B and Setting C to compare which option yields the best print.



Sales and Support

Sales Inquires

Please contact to Toner Cutter sales partners.

or

TCB Technologies Corp.

2-6-17 Dougenzaka, Shibuya-ku, Tokyo, 150-0043, Japan

URL: <http://www.tcbtech.co.jp/tonercutter/>

E-Mail: tcsales@it-eco.co.jp

Support Inquires

For support, please contact to Toner Cutter sales partners which you bought Toner Cutter product(s).

To ensure a speedy reply from Toner Cutter sales partners or us, be sure to include the following information in your email:

1. Registration key
2. Your contact information (Company, Your name, E-mail address and etc.)
3. Information about your computer (Hardware, Operating System, Memory, Printer model, Network environment, Local or network printer and etc.)
4. Toner Cutter product Version number
5. If possible, a screenshot of the error message you received is particularly helpful.
6. What you were doing when the error occurred.
7. The results of the Print Test, if you were able to print. (To print a test page, click on 'Print Test Page' from 'Ink/Toner Saving Options' window.)
8. Problem Descriptions / Requests