

LunaWorX.net

TopWinPrio manual

Speed up your games

Marcus Marcelo Medina
2010-01-28

contents	
TopWinPrio Background history	3
Manual	4
How it works	4
Requirements	4
Compatibility	4
Legal stuff	4
Installation	5
Using TopWinPrio	6
Main window	6
Boost settings	6
Application settings	7
Disclaimer.....	8
LunaWorX.net	8

TopWinPrio Background history

Some months ago I was looking for something to make my gaming go smoother. Since I've had my laptop for almost two years, the games are already getting too heavy for my poor machine.

I remembered that when I played games in Windows 95 there was an application that raised the priority for the active program, so I started looking for a program like that.

I did find [Iolo Gamebooster](#) that helped a bit (I still use it – great app!), but in my stubbornness I wanted that special function. With time I found a trialware program that did exactly that but it was expensive. Since I am studying software development at the moment, I decided to do the program myself.

As it turned out it was really simple and totally not worth \$20 for a simple application like that. So I decided to put my solution available for free.

I named it TopWinPrio (*Top Window Priority*).

Manual

Now we're going to look through the functions in TopWinPrio.

How it works

TopWinPrio checks your windows once a second (that can be changed).

The active window will receive a higher priority than normal. When you shift to another window, the previous window will return back to its default priority and the new active window will now get higher priority.

Those settings can be adjusted from in the [settings tab](#).

TopWinPrio will not boost itself; instead it will place itself in a lower priority class. It will also avoid boosting Windows Explorer since it's not needed to boost. If you really want to boost explorer.exe you can choose to do it in the [settings tab](#).

When you run TopWinPrio it will only be able to change the priority of the applications you have started normally. It will not boost applications run with administrator rights.

To do so you will have to run TopWinPrio with administrator rights.

Requirements

TopWinPrio is written in C# using the .net 3.5 framework. If you do not have the framework installed, it will be downloaded and installed during the installation process.

The installation uses the Windows Installer 3.1 engine. That will also be downloaded and installed if you don't have it already.

Compatibility

TopWinPrio was created in Windows7 environment, it will surely work on Windows Vista, but I am not sure it works on Windows XP. I have big doubts that it will ever work on Windows 2000, 95 or older systems. Sorry!

Legal stuff

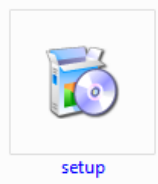
This program is free to download and use. I keep the source code though, just for the fun of it.

You do not have permission to spread this application in software collection bundles, like CDs or other media.

You do not have permission to upload this software to another site and spread it, without my written consent.

For more information, contact me at marcus@lunaworx.net

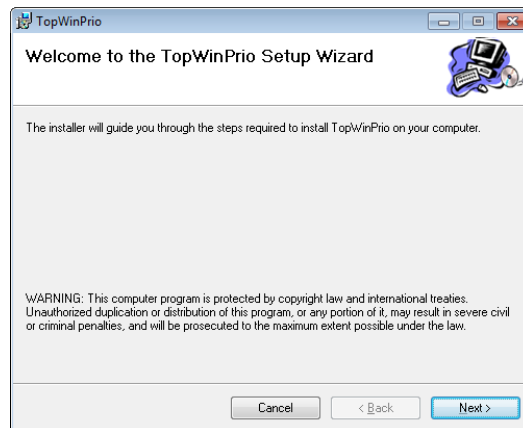
Installation



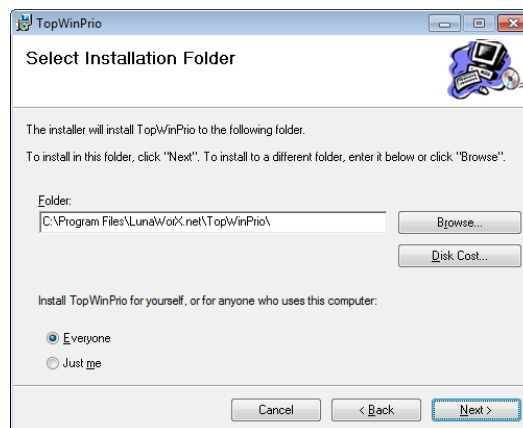
After you downloaded the application, unzip it to a folder and double-click the Setup file.

This will start the installation. Windows will ask for administrative permission before it starts installing.

If you have a previous version of TopWinPrio installed, it will be removed.



Click “Next” to proceed with the installation.



Now the installation program wants somewhere to install the application. Normally it would be the correct path displayed by the installation program, but feel free to change it if you need to.

On this window you can also choose if you want to install the application just for you, or for all users of the computer.

Pressing “next” again will confirm your choices, and pressing “next” again will start installing.

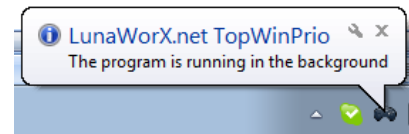
Now Windows will ask you for administrative permission again, and once you press “OK” it will install TopWinPrio for you.

When done, there should be an icon on your desktop. It should look like a gamepad 🎮; you will find this icon on the start menu as well under **Programs\LunaWorX.net\TopWinPrio**.

Using TopWinPrio

When you start TopWinPrio it will hide automatically and show you a message to let you know it is active.

Click on the gamepad icon to open the main window.



Main window

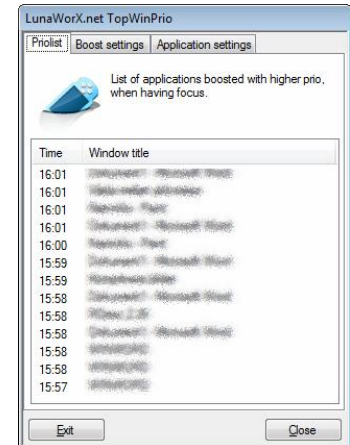
In the main window you can see a list of the latest program that has been boosted in priority.

The list is in a reverse chronological order, which means that the latest program boosted is first on the list.

On the first column you can see the time when the application was boosted, and on the second column you see the window title of the application.

The “Close” button will hide the window, yet keep it active.

The “Exit” button will end the program.



Boost settings

This tab is not really needed; you can use TopWinPrio as it is by default and have lots of fun with it, without ever having to change anything. Still, if you want to tweak, this is the place to be.

“Boost explorer” – this option lets you choose if explorer should be boosted like all the other programs.

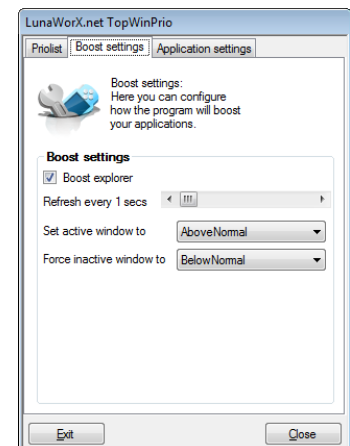
Refresh – this option lets you choose how often TopWinPrio should check for the active application. If you are planning on using the same program for a long while, it could be a good idea to use a higher value, so TopWinPrio won’t check so often.

Set the active window to:

- Above normal – this setting will give your application a higher priority than other applications, but still lower than the drivers. Your graphics and network drivers will still work without noticing the higher priority of your application. This setting is recommended specially if you are planning on playing online games.
- High – If you are playing offline and want to maximize the experience, feel free to try this one.
- Realtime – do not use it. It won’t damage your computer but it will slow down graphics and networking. Not good for gaming, maybe good for compressing and file-moving.

Force inactive window to:

- Default – set the inactive window back to its default priority
- Normal – set the inactive window to Normal priority, even if it had another priority before.



- Below normal - set the inactive window to below normal priority, even if it had another priority before.
- Idle – set the inactive window to idle, that sounds risky somehow... not recommended!

Application settings

On this tab you can change how TopWinPrio will behave.

Start with Windows – lets you choose if you want the program to auto start or not.

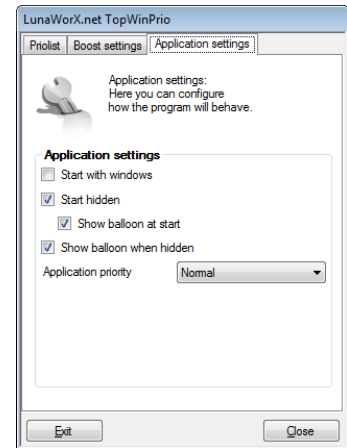
Start hidden – this option is for having TopWinPrio hidden right from the start.

Show Balloon at start – this option lets you choose if you want TopWinPrio to let you know that it is active.

Show balloon when hidden – this option lets you choose if you want a balloon every time you hide the main window.

Application priority

- Normal – lets TopWinPrio run in normal priority
- Below normal – lets TopWinPrio run in a lower priority



Disclaimer

This software is given for free to all who wants to use it. If the software affects your gaming in a negative way, please uninstall the application. Since TopWinPrio is free, I take no responsibility for any problem or damage that may occur in a computer when use this program.

If you can't accept this, don't install the application.

LunaWorX.net

[LunaWorX.net](https://lunaworx.net) is my own playground. On this site I publish all the stuff I find fun enough to publish.

Feel free to visit my webpage and download my free apps.